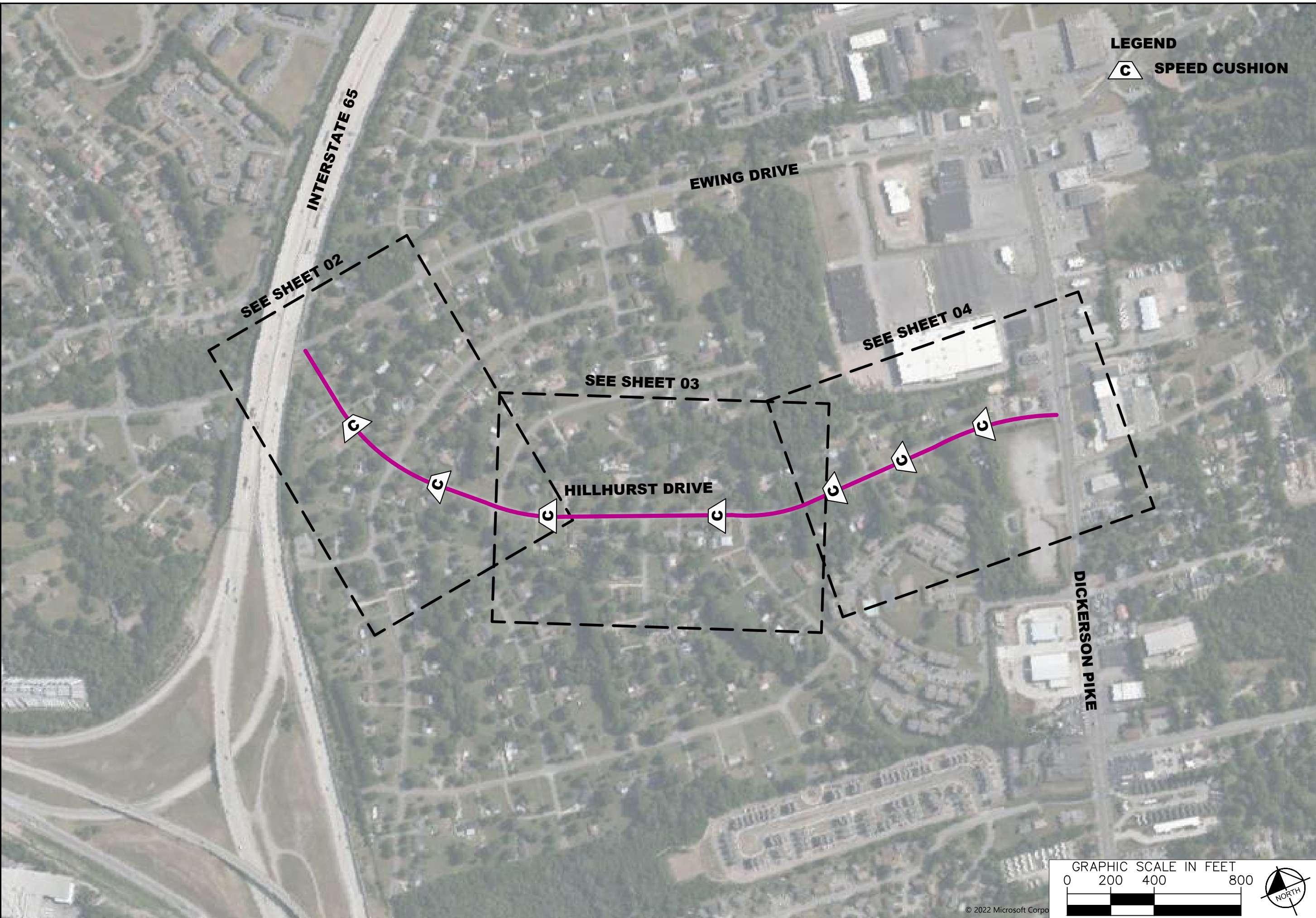


This document, together with the concepts and designs presented herein, is intended only for the specific purpose and client for which it was prepared. Release of and improper reliance on the document without written authorization and adaptation by Kimley-Horn and Associates, Inc. shall be without liability to Kimley-Horn and Associates, Inc.



**LEGEND**  
**C** SPEED CUSHION



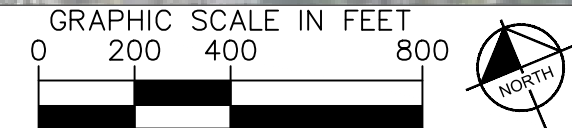
**HILLHURST  
TRAFFIC CALMING  
NASHVILLE, TN**

**DRAFT  
PRELIMINARY  
PLANS  
FOR REVIEW ONLY**

NO.	REVISIONS	DATE	BY
1			
2			
3			
4			
5			
6			
7			
8			
9			
10			

DESIGNED BY: RBW  
 DRAWN BY: DEF  
 CHECKED BY: NDOT  
 DATE: 8/24/2022  
 KIMLEY-HORN PROJECT NO. 11890005

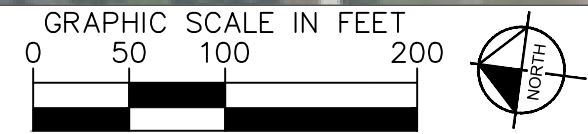
CONCEPT PLAN  
 SHEET NUMBER  
**01**





NO.	DATE	BY
1		
2		
3		
4		
5		
6		
7		
8		
9		
10		

DESIGNED BY:	RBW
DRAWN BY:	DEF
CHECKED BY:	NDOT
DATE:	8/24/2022
KIMLEY-HORN PROJECT NO. 11890005	



This document, together with the concepts and designs presented herein, is intended only for the specific purpose and client for which it was prepared. Reuse of and improper reliance on the document without written authorization and adaptation by Kimley-Horn and Associates, Inc. shall be without liability to Kimley-Horn and Associates, Inc.



**STANWYCK DRIVE**

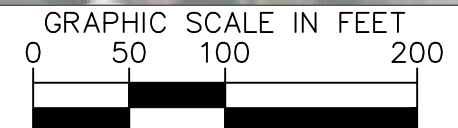
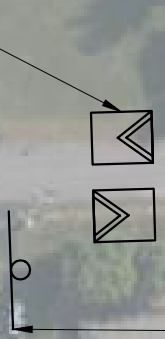
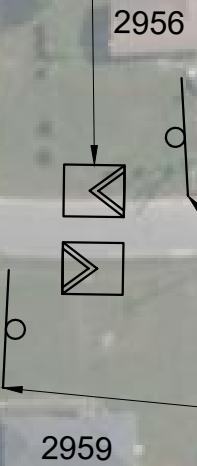
SPEED CUSHION CONFIGURATION A  
60' EAST OF DRIVEWAY AT  
2959 HILLHURST DRIVE

SPEED CUSHION CONFIGURATION A  
40' WEST OF DRIVEWAY AT  
2935 HILLHURST DRIVE

**HILLHURST DRIVE**

**RICH ACRES DRIVE**

**SUNSET DRIVE**



**HILLHURST  
TRAFFIC CALMING  
NASHVILLE, TN**

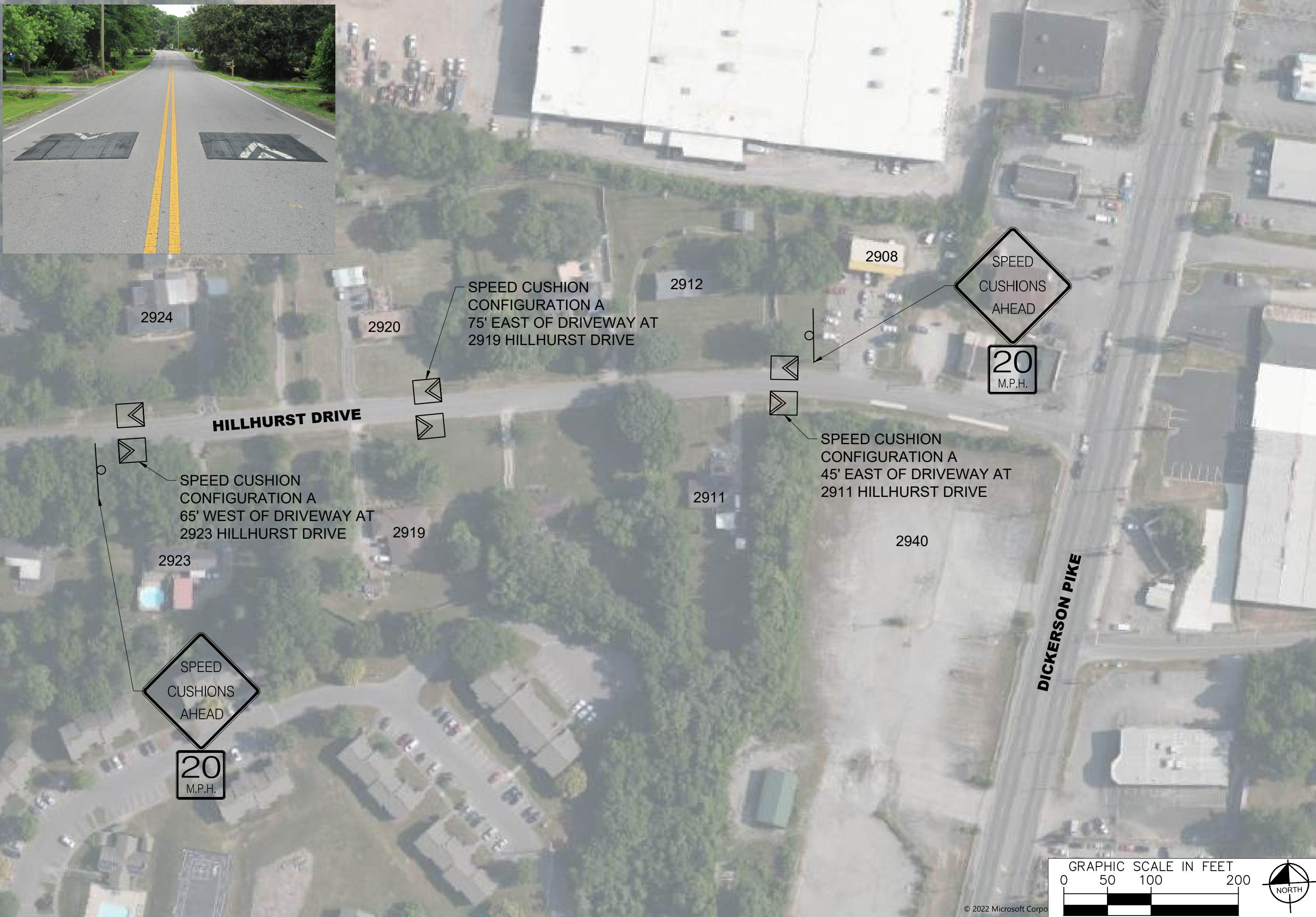
**DRAFT  
PRELIMINARY  
PLANS  
FOR REVIEW ONLY**

NO.	DATE	BY
1		
2		
3		
4		
5		
6		
7		
8		
9		
10		

DESIGNED BY:	RBW
DRAWN BY:	DEF
CHECKED BY:	NDOT
DATE:	8/24/2022
KIMLEY-HORN PROJECT NO. 11890005	

CONCEPT PLAN  
SHEET NUMBER  
**03**

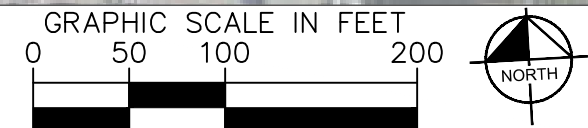
This document, together with the concepts and designs presented herein, is intended only for the specific purpose and client for which it was prepared. Release of and improper reliance on this document without written authorization and adaptation by Kimley-Horn and Associates, Inc. shall be without liability to Kimley-Horn and Associates, Inc.



NO.	DATE	BY
1		
2		
3		
4		
5		
6		
7		
8		
9		
10		

DESIGNED BY:	RBW
DRAWN BY:	DEF
CHECKED BY:	NDOT
DATE:	8/24/2022
KIMLEY-HORN PROJECT NO. 11890005	

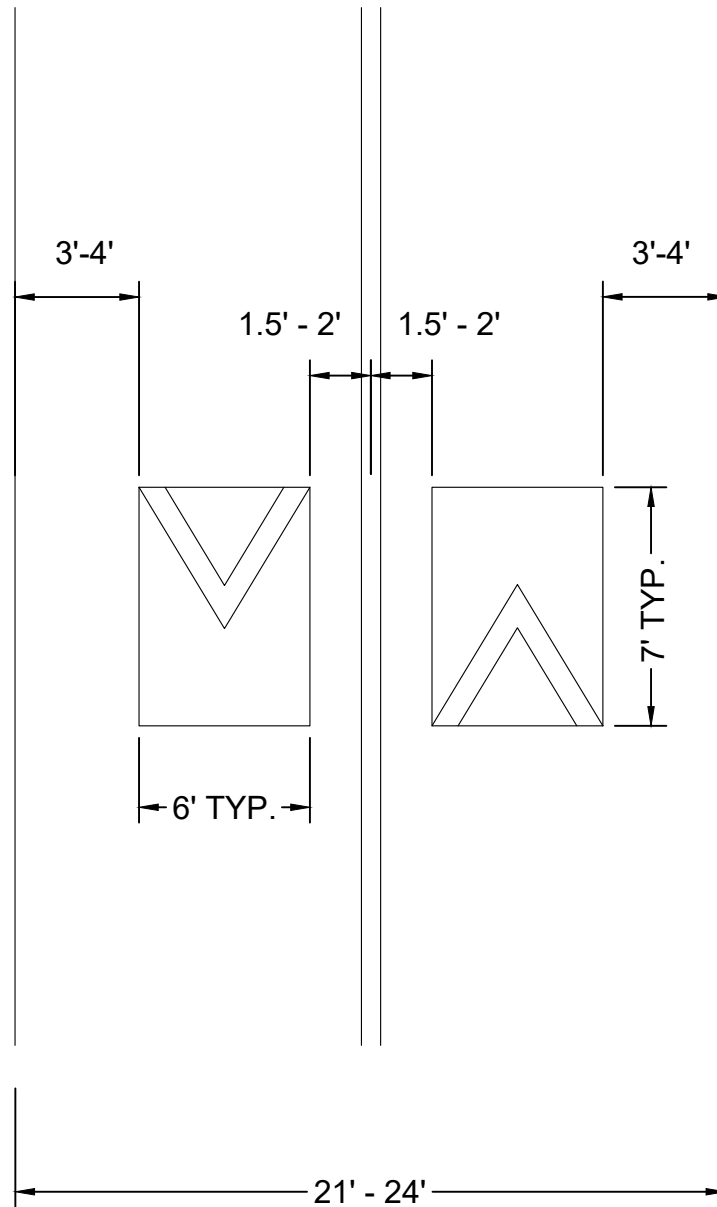
CONCEPT PLAN
SHEET NUMBER
<b>04</b>



This document, together with the concepts and designs presented herein, is intended only for the specific purpose and client for which it was prepared. Release of and improper reliance on the document without written authorization and adaptation by Kimley-Horn and Associates, Inc. shall be without liability to Kimley-Horn and Associates, Inc.

This document, together with the concepts and designs presented herein, is intended only for the specific purpose and client for which it was prepared. Reuse of and improper reliance on the documents without written authorization and adaptation by Kimley-Horn and Associates, Inc. shall be without liability to Kimley-Horn and Associates, Inc.

### SPEED CUSHION CONFIGURATION A



HILLHURST  
TRAFFIC CALMING  
NASHVILLE, TN

**DRAFT  
PRELIMINARY  
PLANS**  
FOR REVIEW ONLY

REVISIONS	DATE	BY

No.	1	2	3	4	5	6	7	8	9	10
DESIGNED BY:	RBW									DEF
CHECKED BY:	NDOT									
DATE:	8/24/2022									
KIMLEY-HORN PROJECT NO. 11890005										

CONCEPT PLAN

SHEET NUMBER  
**05**