

TABLE OF CONTENTS

SHEETS 1-5	OVERVIEW MAPS
SHEETS 6-7	SPEED CUSHIONS FOR BARRYWOOD DRIVE
SHEETS 8-10	SPEED CUSHIONS FOR DARLINGTON DRIVE
SHEETS 11-12	SPEED CUSHION DETAILS
SHEETS 13-18	RADAR FEEDBACK SIGNS FOR BLACKMAN ROAD
SHEETS 19-23	RADAR FEEDBACK SIGNS FOR HOGAN ROAD
SHEETS 24-28	RADAR FEEDBACK SIGNS FOR TROUSDALE DRIVE

LEGEND

- R** RADAR SPEED FEEDBACK SIGN
- C** SPEED CUSHION



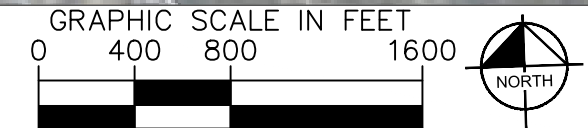
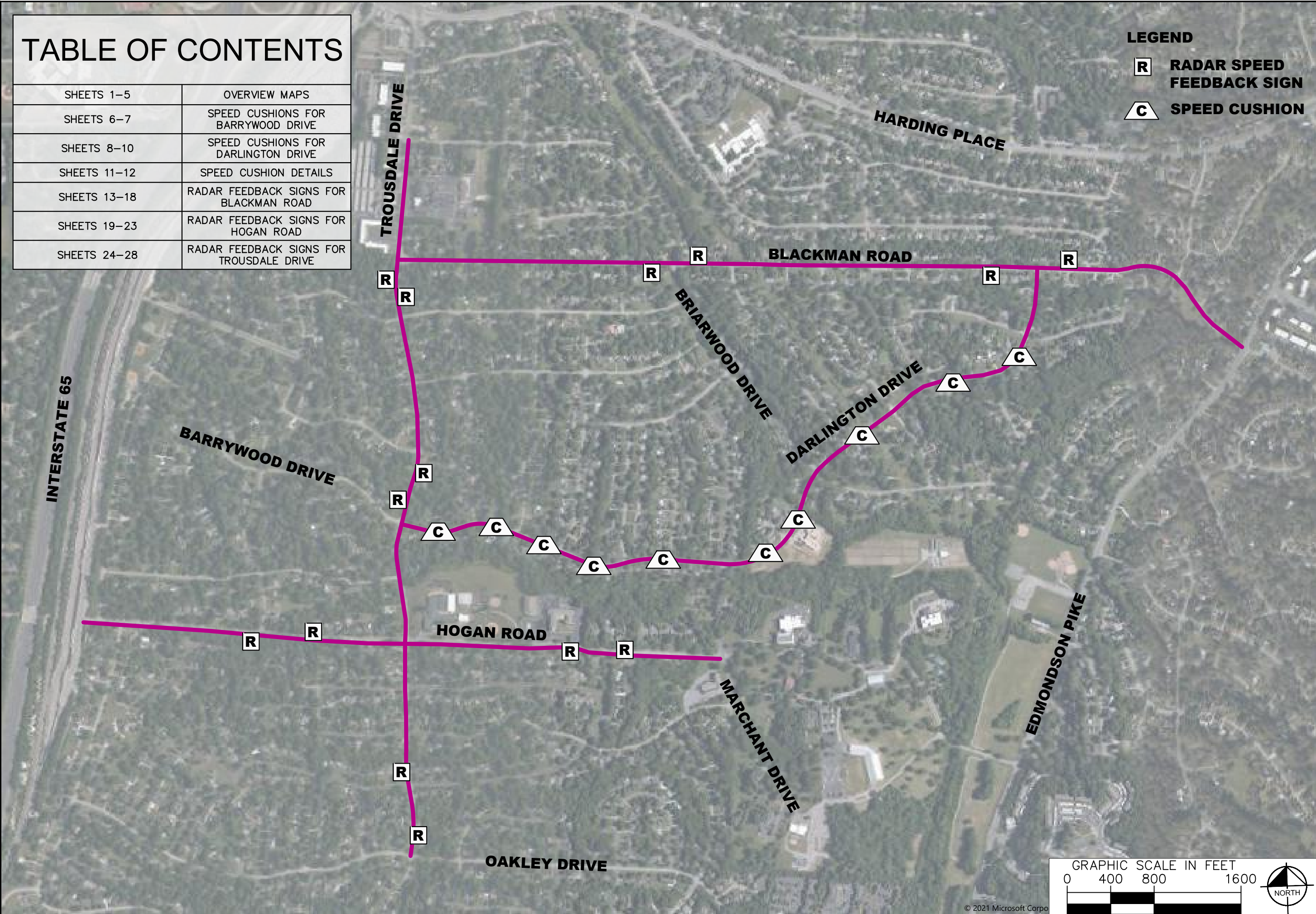
NORTH CRIEVE HALL
TRAFFIC CALMING
NASHVILLE, TN

DRAFT
PRELIMINARY
PLANS
FOR REVIEW ONLY

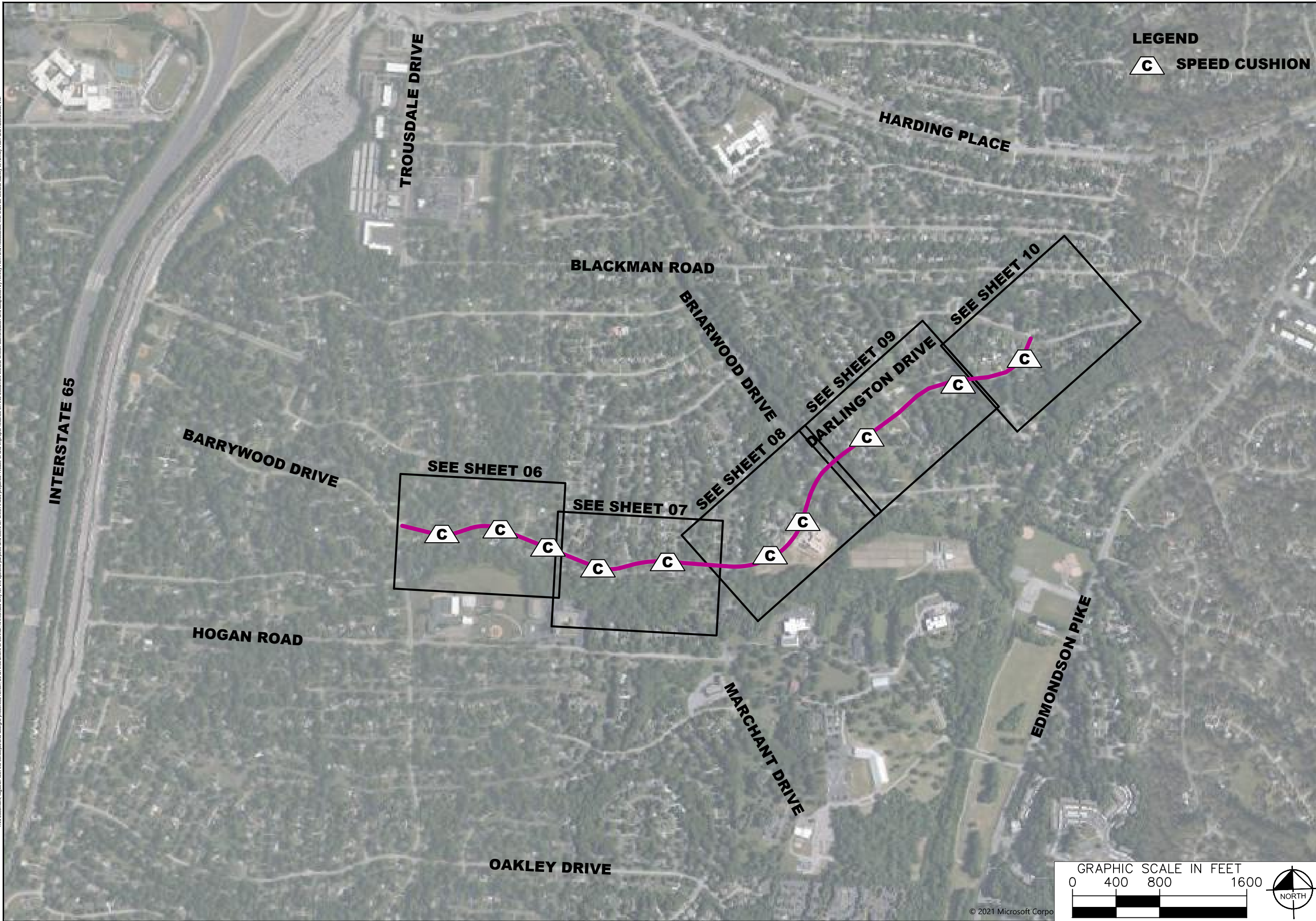
NO.	DATE	BY	REVISIONS
1			
2			
3			
4			
5			
6			
7			
8			
9			
10			

DESIGNED BY: RBW
DRAWN BY: EJW
CHECKED BY: NDOT
DATE: 9/24/2022
KIMLEY-HORN PROJECT NO. 11890005
CONCEPT PLAN
SHEET NUMBER
01

This document, together with the concepts and designs presented herein, is intended only for the specific purpose and client for which it was prepared. Release of and improper reliance on this document without written authorization and adaptation by Kimley-Horn and Associates, Inc. shall be without liability to Kimley-Horn and Associates, Inc.



This document, together with the concepts and designs presented herein, is intended only for the specific purpose and client for which it was prepared. Reuse of and improper reliance on the documents without written authorization and adaptation by Kimley-Horn and Associates, Inc. shall be without liability to Kimley-Horn and Associates, Inc.



LEGEND
C SPEED CUSHION

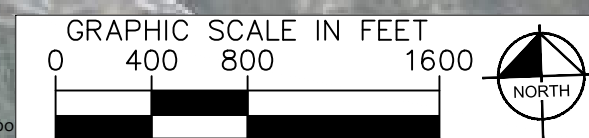


NORTH CRIEVE HALL
TRAFFIC CALMING
NASHVILLE, TN

**DRAFT
PRELIMINARY
PLANS**
FOR REVIEW ONLY

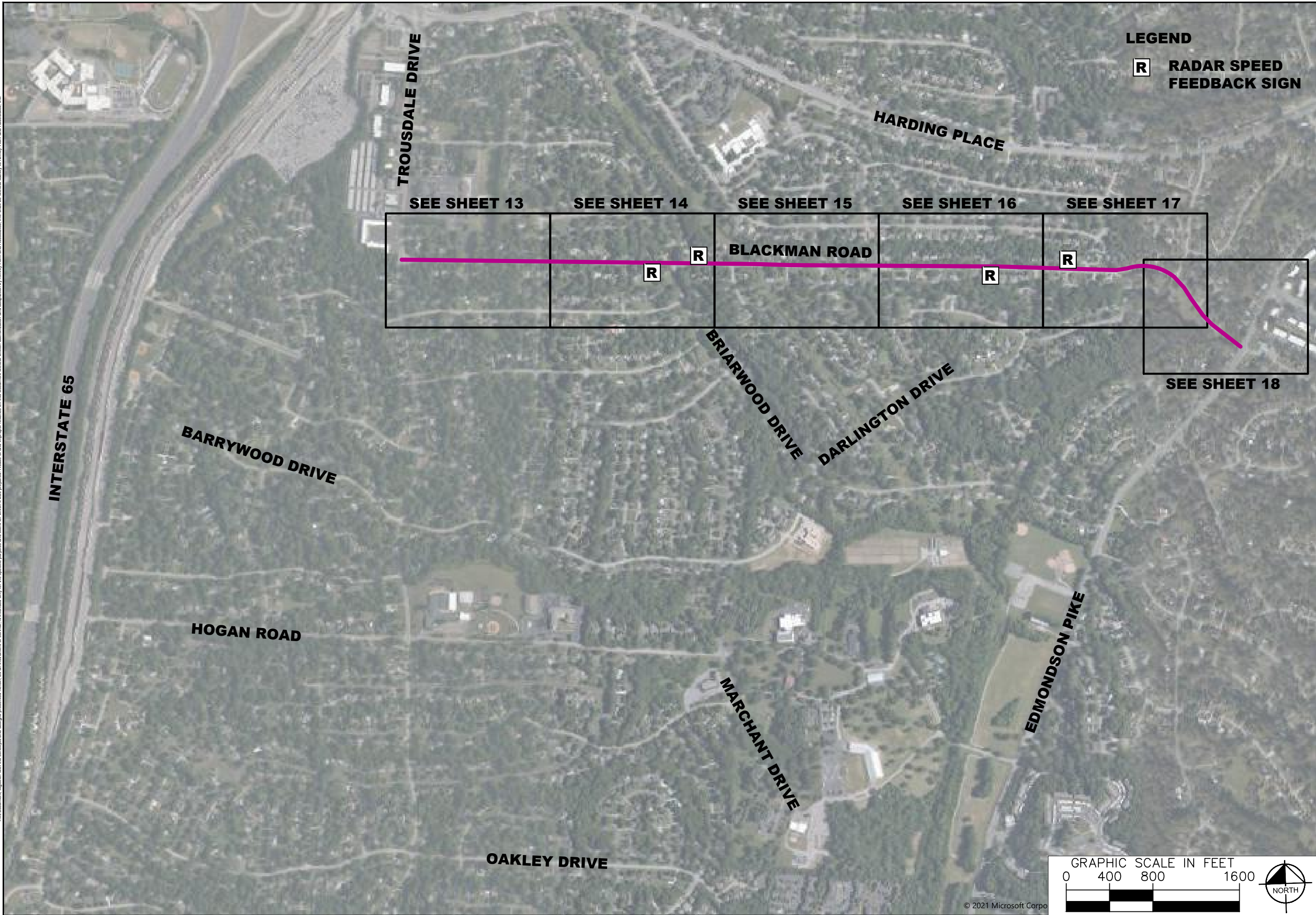
NO.	REVISIONS	DATE	BY
1			
2			
3			
4			
5			
6			
7			
8			
9			
10			

DESIGNED BY: _____ RBW
DRAWN BY: _____ EJV
CHECKED BY: _____ NDOT
DATE: 9/24/2022
KIMLEY-HORN PROJECT NO. 11890005



© 2021 Microsoft Corp

This document, together with the concepts and designs presented herein, is intended only for the specific purpose and client for which it was prepared. Release of and improper reliance on this document without written authorization and adaptation by Kimley-Horn and Associates, Inc. shall be without liability to Kimley-Horn and Associates, Inc.



LEGEND
R RADAR SPEED FEEDBACK SIGN

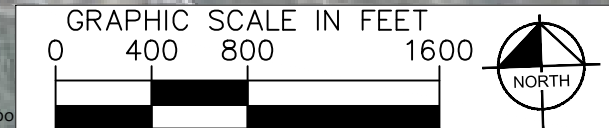


**NORTH CRIEVE HALL
TRAFFIC CALMING**
NASHVILLE, TN

**DRAFT
PRELIMINARY
PLANS**
FOR REVIEW ONLY

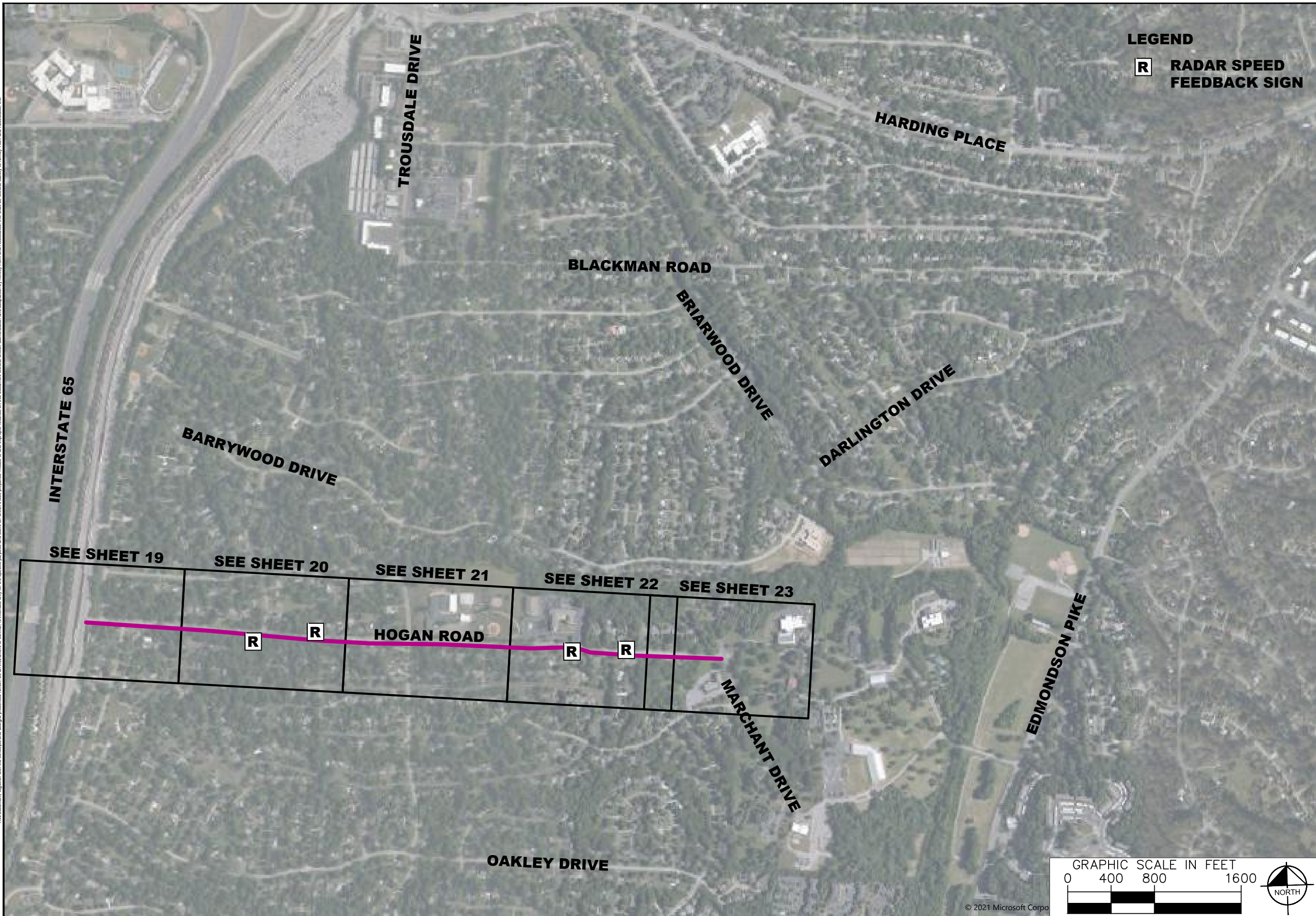
NO.	REVISIONS	DATE	BY
1			
2			
3			
4			
5			
6			
7			
8			
9			
10			

DESIGNED BY: _____ RBW
DRAWN BY: _____ EJW
CHECKED BY: _____ NDOT
DATE: 9/24/2022
KIMLEY-HORN PROJECT NO. 11890005



CONCEPT PLAN
SHEET NUMBER
03

This document, together with the concepts and designs presented herein, is intended only for the specific purpose and client for which it was prepared. Release of and improper reliance on this document without written authorization and adaptation by Kimley-Horn and Associates, Inc. shall be without liability to Kimley-Horn and Associates, Inc.



LEGEND
R RADAR SPEED
FEEDBACK SIGN



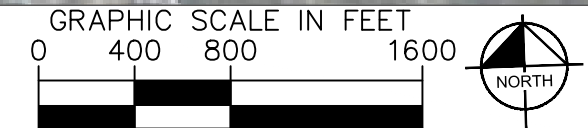
**NORTH CRIEVE HALL
TRAFFIC CALMING
NASHVILLE, TN**

**DRAFT
PRELIMINARY
PLANS
FOR REVIEW ONLY**

NO.	DATE	BY	REVISIONS
1			
2			
3			
4			
5			
6			
7			
8			
9			
10			

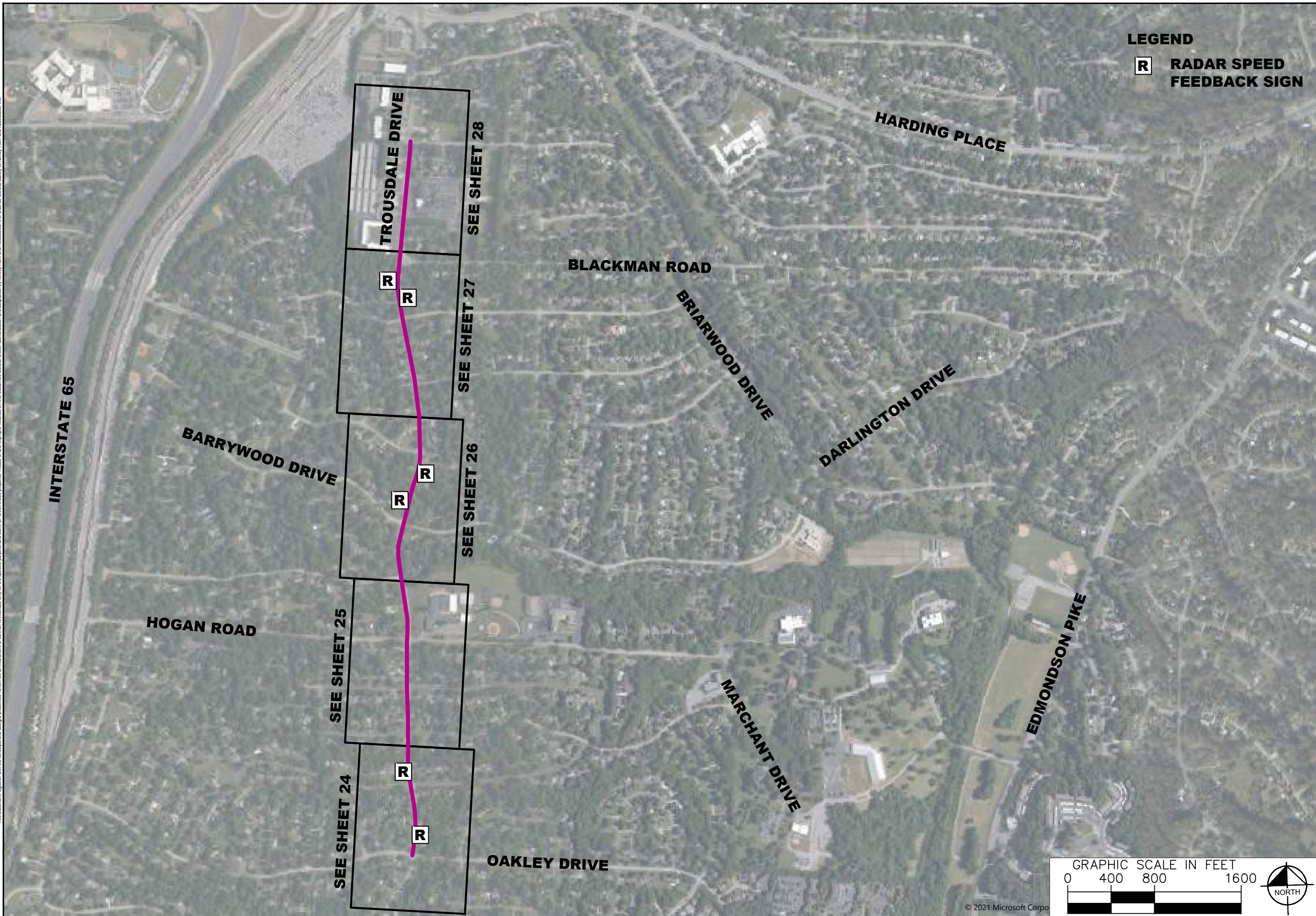
DESIGNED BY:	RBW
DRAWN BY:	EJW
CHECKED BY:	NDOT
DATE:	9/24/2022
KIMLEY-HORN PROJECT NO.:	11890005

CONCEPT PLAN
SHEET NUMBER
04



© 2021 Microsoft Corpo

This document, together with the concepts and designs presented herein, is intended only for the specific purpose and client for which it was prepared. Release of and improper reliance on this document without written authorization and adaptation by Kimley-Horn and Associates, Inc. shall be without liability to Kimley-Horn and Associates, Inc.



LEGEND
R RADAR SPEED
FEEDBACK SIGN

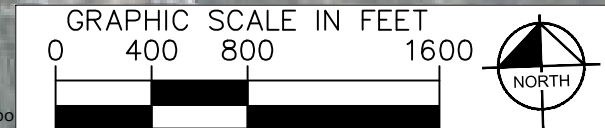


**NORTH CRIEVE HALL
TRAFFIC CALMING
NASHVILLE, TN**

**DRAFT
PRELIMINARY
PLANS
FOR REVIEW ONLY**

NO.	REVISIONS	DATE	BY
1			
2			
3			
4			
5			
6			
7			
8			
9			
10			

DESIGNED BY: RBW
 DRAWN BY: EJW
 CHECKED BY: NDOT
 DATE: 9/24/2022
 KIMLEY-HORN PROJECT NO. 11890005



CONCEPT PLAN
 SHEET NUMBER
05

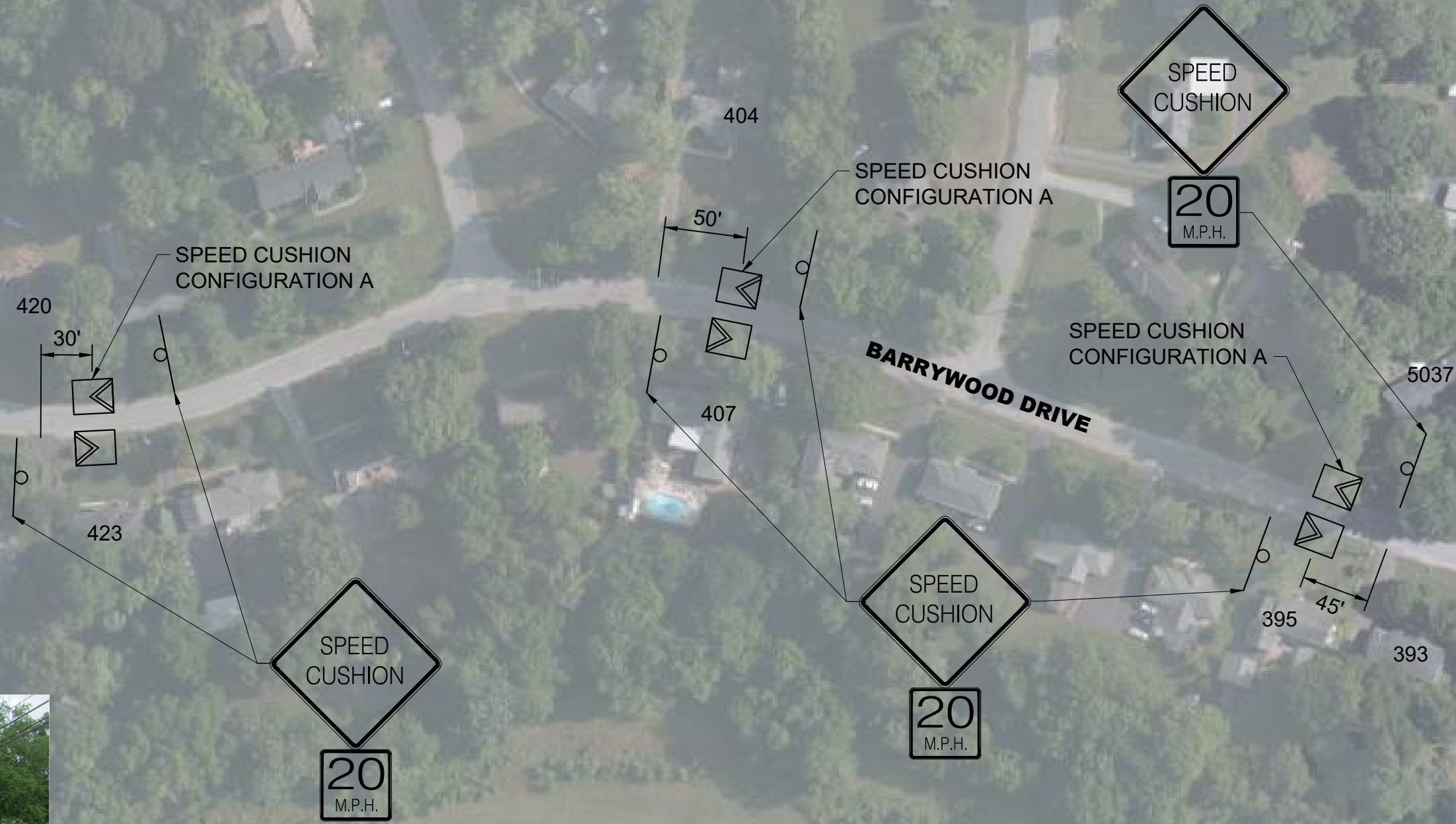
This document, together with the concepts and designs presented herein, is intended only for the specific purpose and client for which it was prepared. Reuse of and improper reliance on this document without written authorization and adaptation by Kimley-Horn and Associates, Inc. shall be without liability to Kimley-Horn and Associates, Inc.

TROUSDALE DRIVE

ARROWWOOD DRIVE

TIMBERHILL DRIVE

BARRYWOOD DRIVE

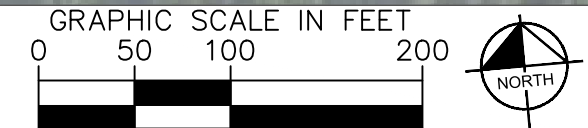


NORTH CRIEVE HALL
TRAFFIC CALMING
NASHVILLE, TN

DRAFT
PRELIMINARY
PLANS
FOR REVIEW ONLY

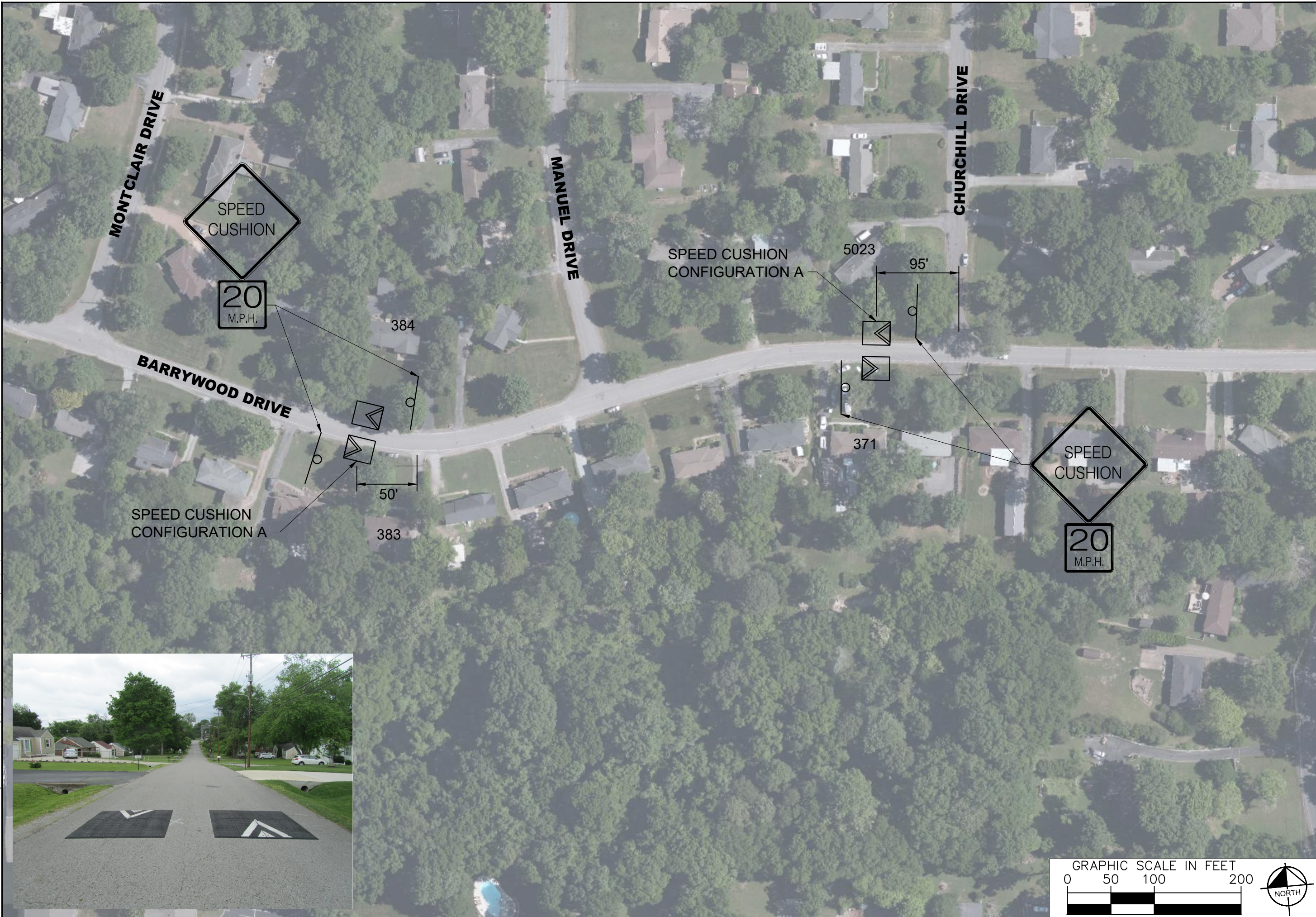
NO.	DATE	BY	REVISIONS
1			
2			
3			
4			
5			
6			
7			
8			
9			
10			

DESIGNED BY: RBW
DRAWN BY: EJW
CHECKED BY: NDOT
DATE: 9/24/2022
KIMLEY-HORN PROJECT NO. 118900005



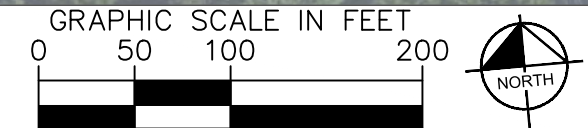
© 2022 Microsoft Corpo

This document, together with the concepts and designs presented herein, is intended only for the specific purpose and client for which it was prepared. Release of and improper reliance on this document without written authorization and adaptation by Kimley-Horn and Associates, Inc. shall be without liability to Kimley-Horn and Associates, Inc.

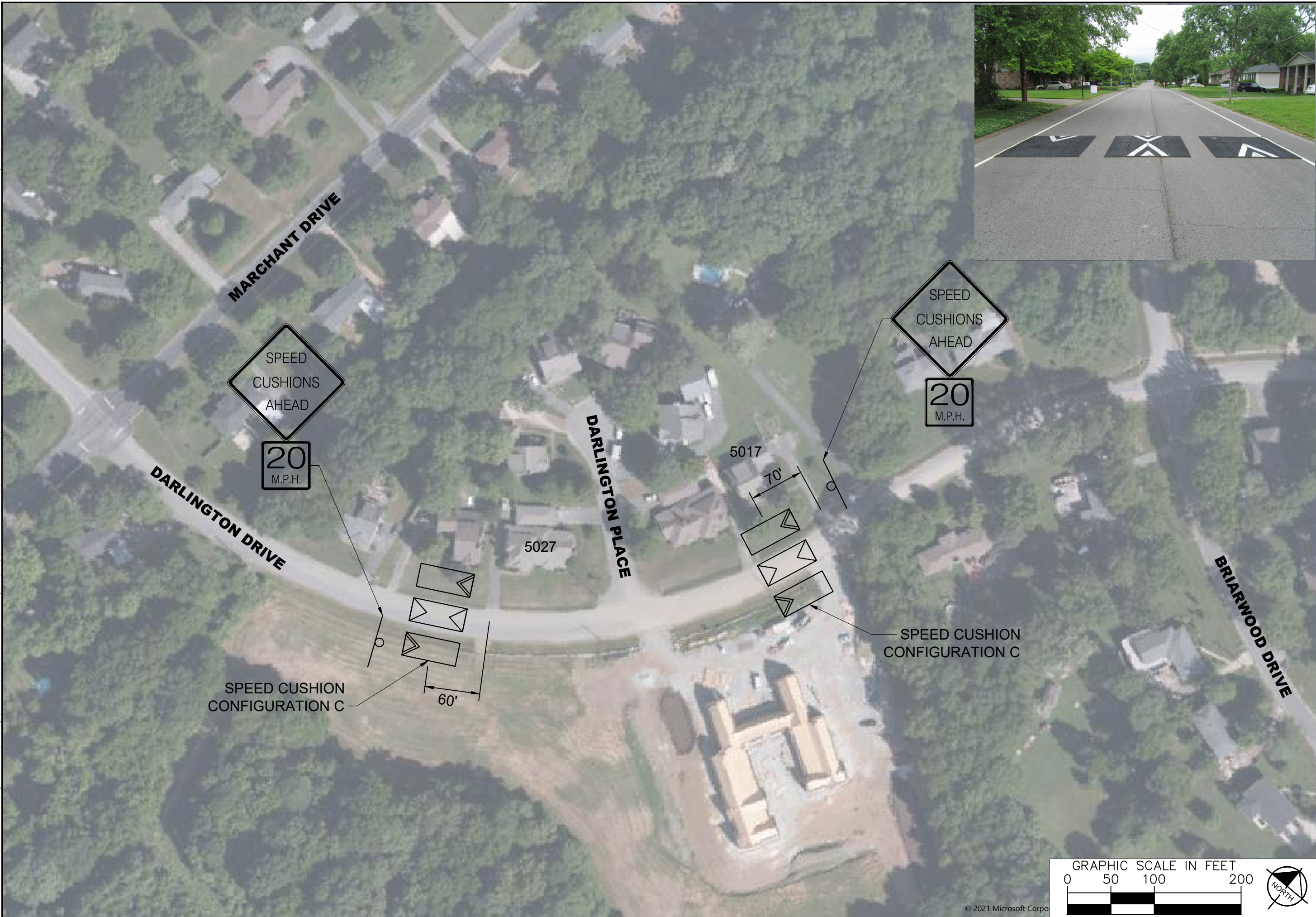


NO.	REVISIONS	DATE	BY
1			
2			
3			
4			
5			
6			
7			
8			
9			
10			

DESIGNED BY:	RBW
DRAWN BY:	EJW
CHECKED BY:	NDOT
DATE:	9/24/2022
KIMLEY-HORN PROJECT NO. 118900005	



This document, together with the concepts and designs presented herein, is intended only for the specific purpose and client for which it was prepared. Release of and improper reliance on the documents without written authorization and adaptation by Kimley-Horn and Associates, Inc. shall be without liability to Kimley-Horn and Associates, Inc.



NO.	REVISIONS	DATE	BY	RBW
1				
2				
3				
4				
5				
6				
7				
8				
9				
10				

DESIGNED BY: _____ RBW
 DRAWN BY: _____ EJV
 CHECKED BY: _____ NDOT
 DATE: 9/24/2022
 KIMLEY-HORN PROJECT NO. 118900005

This document, together with the concepts and designs presented herein, is intended only for the specific purpose and client for which it was prepared. Release of and improper reliance on this document without written authorization and adaptation by Kimley-Horn and Associates, Inc. shall be without liability to Kimley-Horn and Associates, Inc.



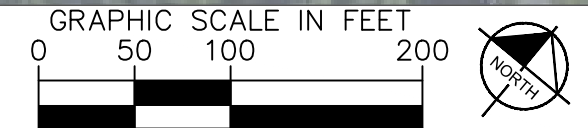
NORTH CRIEVE HALL
TRAFFIC CALMING
NASHVILLE, TN

DRAFT
PRELIMINARY
PLANS
FOR REVIEW ONLY

NO.	REVISIONS	DATE	BY	RBW
1				
2				
3				
4				
5				
6				
7				
8				
9				
10				

DESIGNED BY: RBW
DRAWN BY: EJW
CHECKED BY: NDOT
DATE: 9/24/2022
KIMLEY-HORN PROJECT NO. 118900005

CONCEPT PLAN
SHEET NUMBER
09



© 2022 Microsoft Corpo

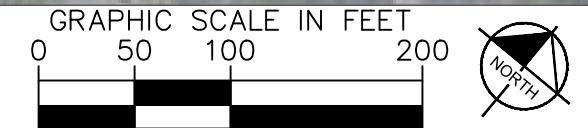
This document, together with the concepts and designs presented herein, is intended only for the specific purpose and client for which it was prepared. Reuse of and improper reliance on the documents without written authorization and adaptation by Kimley-Horn and Associates, Inc. shall be without liability to Kimley-Horn and Associates, Inc.



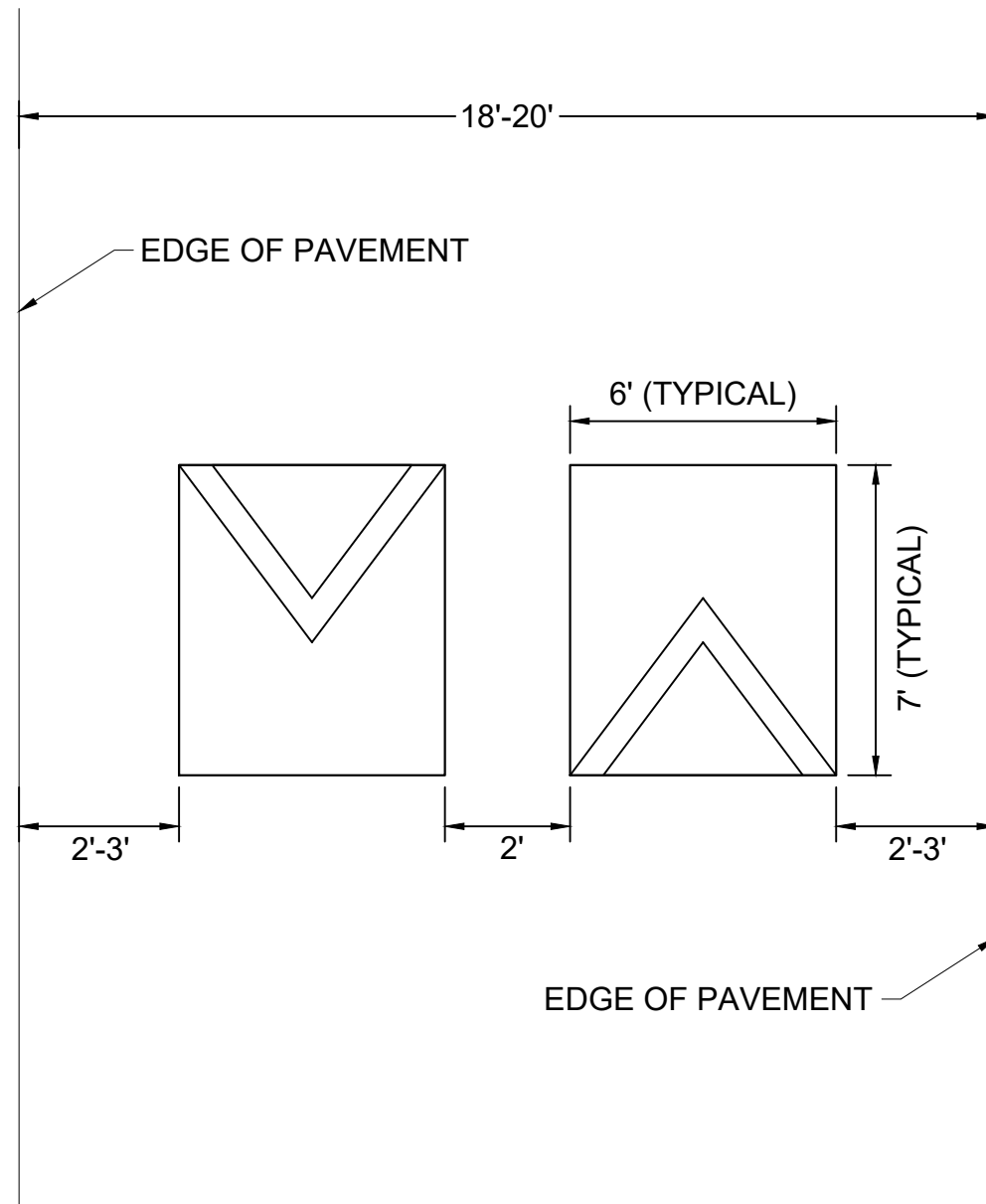
NO.	REVISIONS	DATE	BY	RBW
1				
2				
3				
4				
5				
6				
7				
8				
9				
10				

DESIGNED BY: EJV
 DRAWN BY: EJV
 CHECKED BY: NDOT
 DATE: 9/24/2022
 KIMLEY-HORN PROJECT NO. 118900005

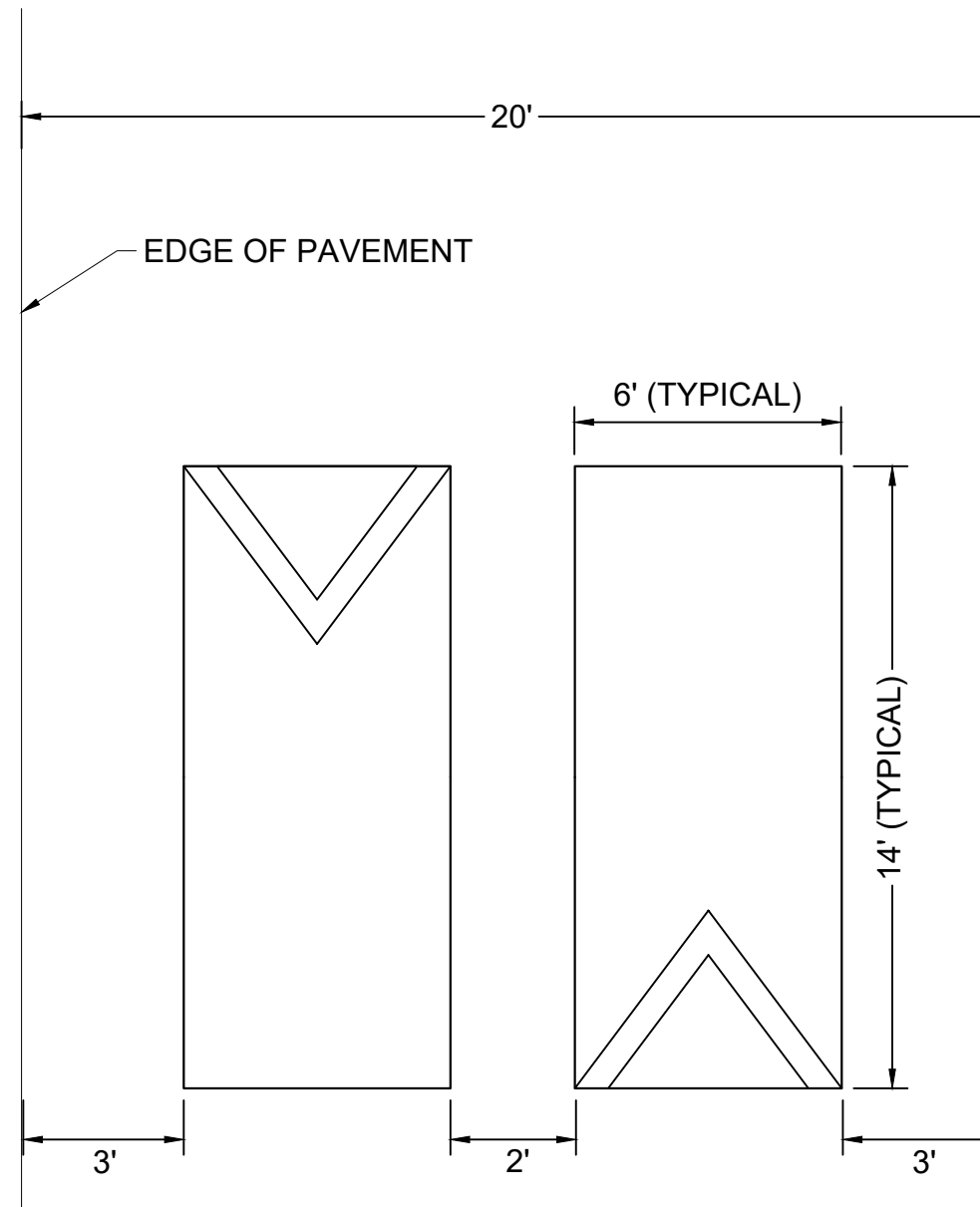
CONCEPT PLAN
 SHEET NUMBER
10



CONFIGURATION A



CONFIGURATION B



NO.	REVISIONS	DATE	BY
1			
2			
3			
4			
5			
6			
7			
8			
9			
10			

DESIGNED BY: RBW
 DRAWN BY: EJW
 CHECKED BY: NDOT
 DATE: 9/24/2022
 KIMLEY-HORN PROJECT NO. 118900005

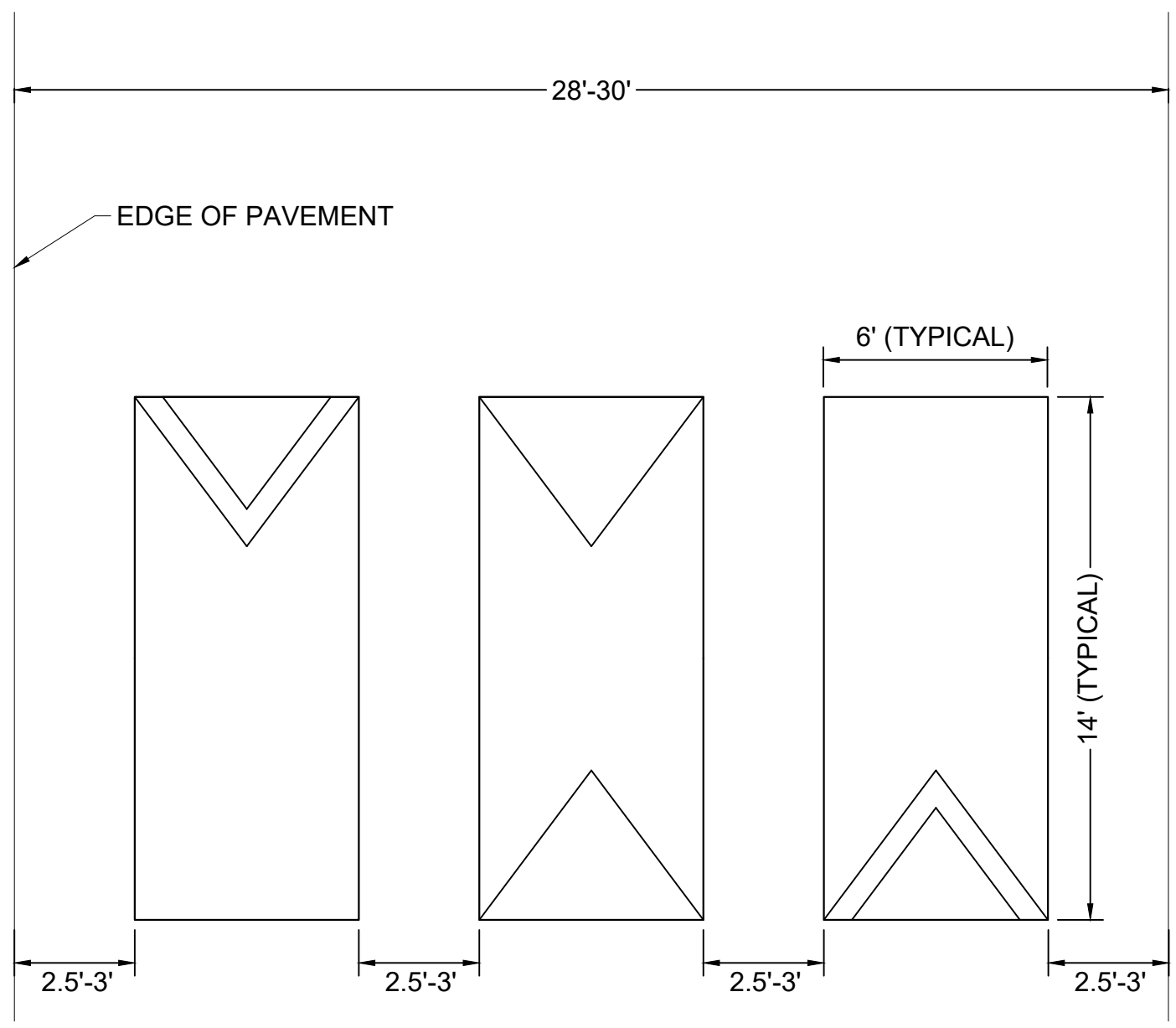
CONCEPT PLAN

SHEET NUMBER
11

This document, together with the concepts and designs presented herein, is intended only for the specific purpose and client for which it was prepared. Release of and improper reliance on the documents without written authorization and adaptation by Kimley-Horn and Associates, Inc. shall be without liability to Kimley-Horn and Associates, Inc.

This document, together with the concepts and designs presented herein, is intended only for the specific purpose and client for which it was prepared. Release of and improper reliance on the documents without written authorization and adaptation by Kimley-Horn and Associates, Inc. shall be without liability to Kimley-Horn and Associates, Inc.

CONFIGURATION C



NORTH CRIEVE HALL
TRAFFIC CALMING
NASHVILLE, TN

**DRAFT
PRELIMINARY
PLANS**
FOR REVIEW ONLY

NO.	REVISIONS	DATE	BY
1			
2			
3			
4			
5			
6			
7			
8			
9			
10			

DESIGNED BY: RBW
 DRAWN BY: EJW
 CHECKED BY: NDOT
 DATE: 9/24/2022
 KIMLEY-HORN PROJECT NO. 118900005

CONCEPT PLAN

SHEET NUMBER
12

This document, together with the concepts and designs presented herein, is intended only for the specific purpose and client for which it was prepared. Reuse of and improper reliance on the document without written authorization and adaptation by Kimley-Horn and Associates, Inc. shall be without liability to Kimley-Horn and Associates, Inc.

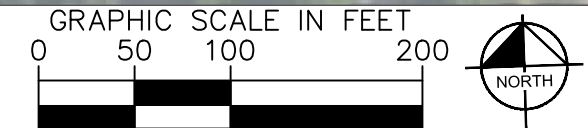


**NORTH CRIEVE HALL
TRAFFIC CALMING
NASHVILLE, TN**

**DRAFT
PRELIMINARY
PLANS
FOR REVIEW ONLY**

NO.	REVISIONS	DATE	BY
1			
2			
3			
4			
5			
6			
7			
8			
9			
10			

DESIGNED BY: _____ RBW
 DRAWN BY: _____ EJV
 CHECKED BY: _____ NDOT
 DATE: 9/24/2022
 KIMLEY-HORN PROJECT NO. 118900005



© 2021 Microsoft Corpo

This document, together with the concepts and designs presented herein, is intended only for the specific purpose and client for which it was prepared. Release of and improper reliance on this document without written authorization and adaptation by Kimley-Horn and Associates, Inc. shall be without liability to Kimley-Horn and Associates, Inc.



NDOT

**NORTH CRIEVE HALL
TRAFFIC CALMING
NASHVILLE, TN**

**DRAFT
PRELIMINARY
PLANS
FOR REVIEW ONLY**

NO.	REVISIONS	DATE	BY
1			
2			
3			
4			
5			
6			
7			
8			
9			
10			

DESIGNED BY: EJW
 DRAWN BY: NDOT
 CHECKED BY: NDOT
 DATE: 9/24/2022
 KIMLEY-HORN PROJECT NO. 11890005

CONCEPT PLAN
SHEET NUMBER
14

This document, together with the concepts and designs presented herein, is intended only for the specific purpose and client for which it was prepared. Reuse of and improper reliance on this document without written authorization and adaptation by Kimley-Horn and Associates, Inc. shall be without liability to Kimley-Horn and Associates, Inc.



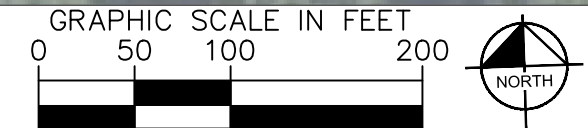
**NORTH CRIEVE HALL
TRAFFIC CALMING
NASHVILLE, TN**

**DRAFT
PRELIMINARY
PLANS
FOR REVIEW ONLY**

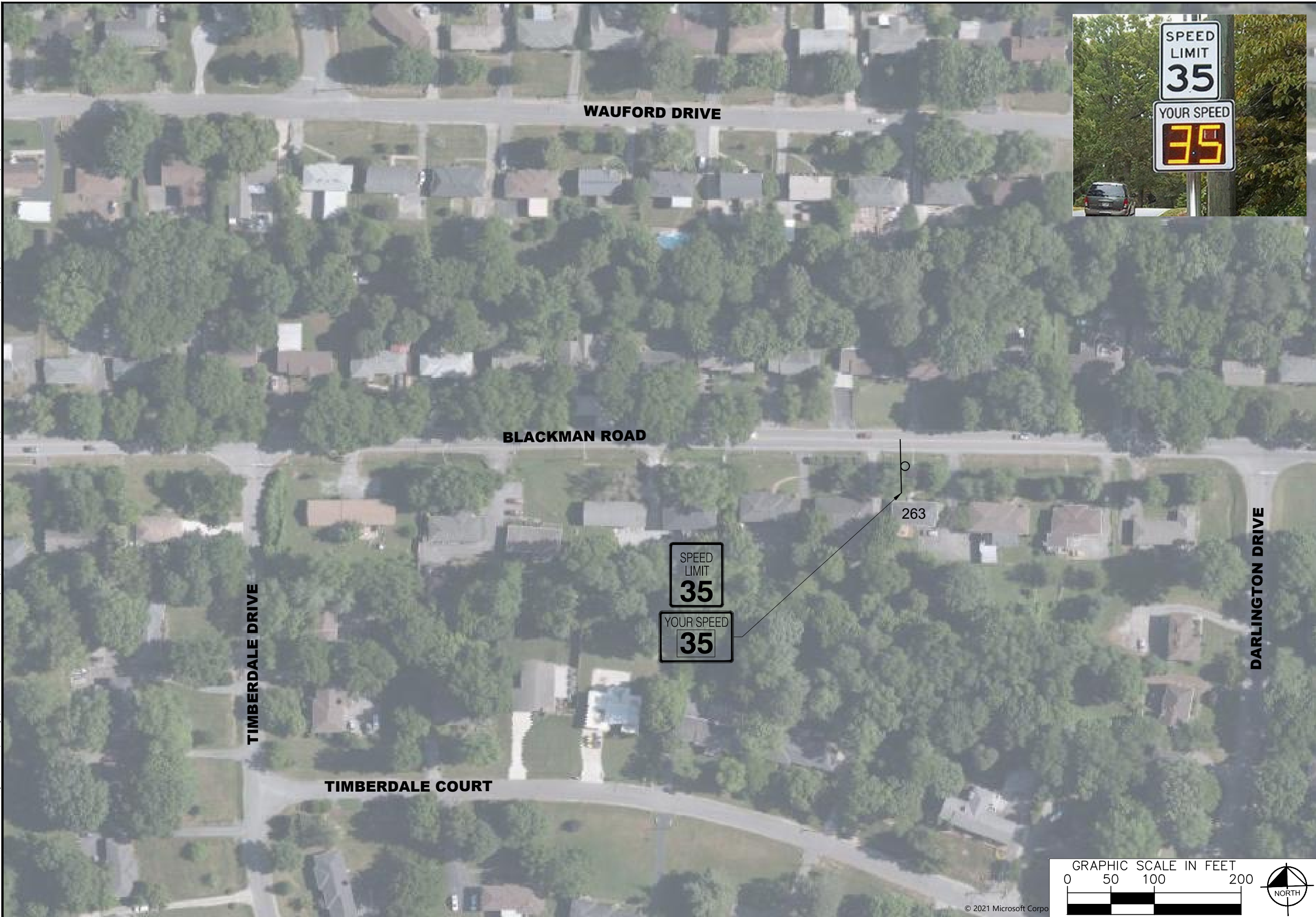
NO.	REVISIONS	DATE	BY
1			
2			
3			
4			
5			
6			
7			
8			
9			
10			

DESIGNED BY: EJW
 DRAWN BY: EJW
 CHECKED BY: NDOT
 DATE: 9/24/2022
 KIMLEY-HORN PROJECT NO. 118900005

CONCEPT PLAN
 SHEET NUMBER
15



This document, together with the concepts and designs presented herein, is intended only for the specific purpose and client for which it was prepared. Release of and improper reliance on the document without written authorization and adaptation by Kimley-Horn and Associates, Inc. shall be without liability to Kimley-Horn and Associates, Inc.



NDOT

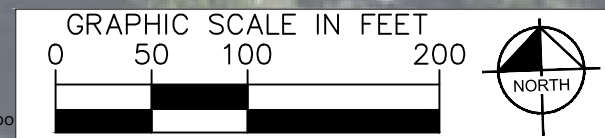
**NORTH CRIEVE HALL
TRAFFIC CALMING
NASHVILLE, TN**

**DRAFT
PRELIMINARY
PLANS
FOR REVIEW ONLY**

NO.	REVISIONS	DATE	BY	RBW
1				
2				
3				
4				
5				
6				
7				
8				
9				
10				

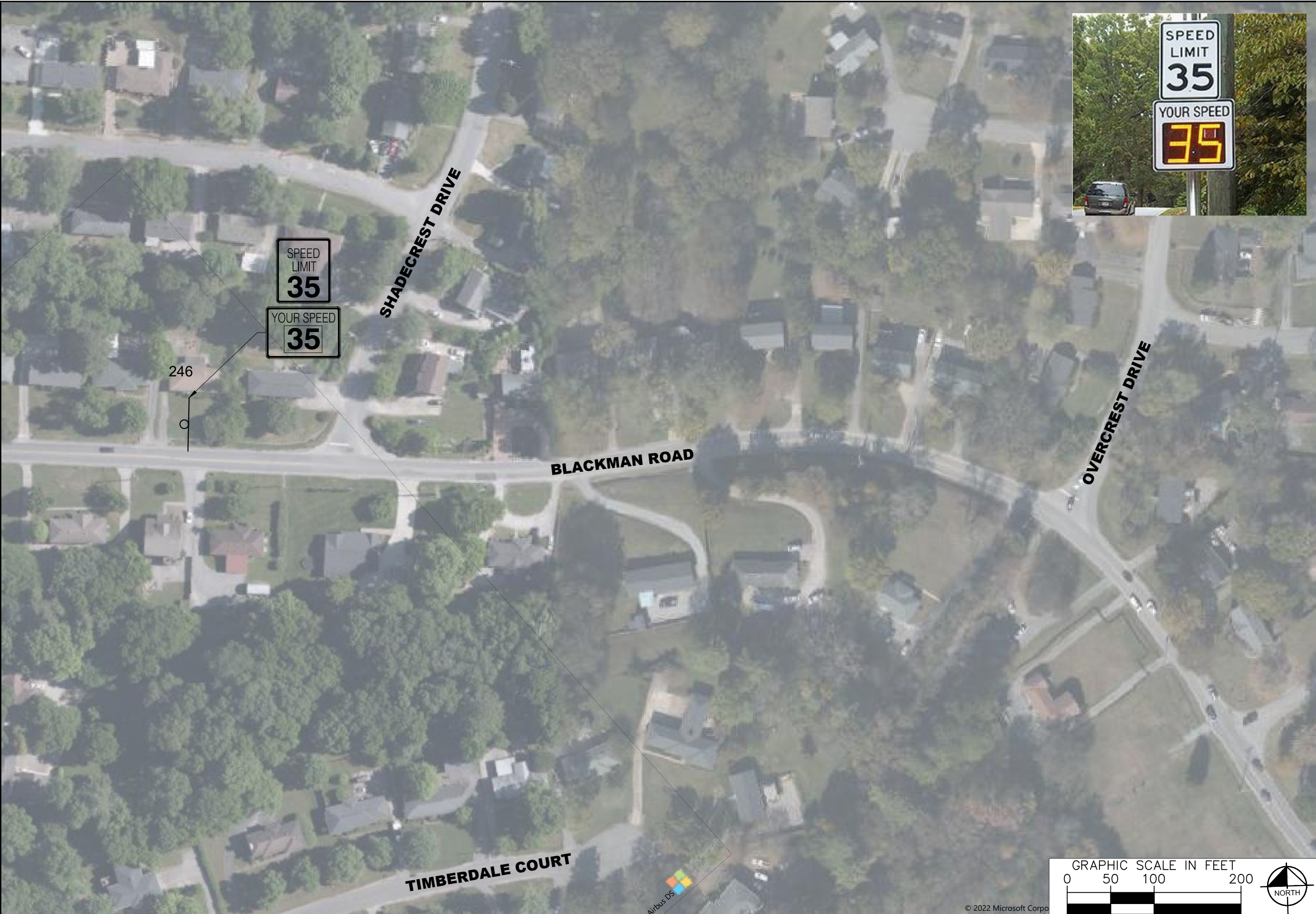
DESIGNED BY: _____ RBW
 DRAWN BY: _____ EJJW
 CHECKED BY: _____ NDOT
 DATE: 9/24/2022
 KIMLEY-HORN PROJECT NO. 118900005

CONCEPT PLAN
SHEET NUMBER
16



© 2021 Microsoft Corpo

This document, together with the concepts and designs presented herein, is intended only for the specific purpose and client for which it was prepared. Release of and improper reliance on the documents without written authorization and adaptation by KIMLEY-HORN and Associates, Inc. shall be without liability to KIMLEY-HORN and Associates, Inc.



**NORTH CRIEVE HALL
TRAFFIC CALMING
NASHVILLE, TN**

**DRAFT
PRELIMINARY
PLANS
FOR REVIEW ONLY**

NO.	REVISIONS	DATE	BY
1			
2			
3			
4			
5			
6			
7			
8			
9			
10			

DESIGNED BY: EJW
 DRAWN BY: NDOT
 CHECKED BY: NDOT
 DATE: 9/24/2022
 KIMLEY-HORN PROJECT NO. 11890005

CONCEPT PLAN
 SHEET NUMBER
17

OVERCREST DRIVE

BLACKMAN COURT

BLACKMAN ROAD

**NO TRAFFIC
CALMING MEASURES
IN THIS AREA**

EDMONDSON PIKE

WHISPERING HILLS DRIVE

NDOT

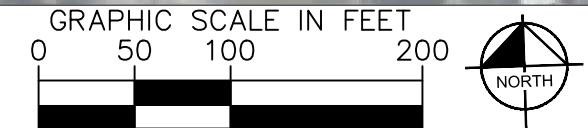
**NORTH CRIEVE HALL
TRAFFIC CALMING
NASHVILLE, TN**

**DRAFT
PRELIMINARY
PLANS
FOR REVIEW ONLY**

NO.	REVISIONS	DATE	BY
1			
2			
3			
4			
5			
6			
7			
8			
9			
10			

DESIGNED BY: EJW
 DRAWN BY: NDOT
 CHECKED BY: NDOT
 DATE: 9/24/2022
 KIMLEY-HORN PROJECT NO. 11890005

CONCEPT PLAN
 SHEET NUMBER
18



This document, together with the concepts and designs presented herein, is intended only for the specific purpose and client for which it was prepared. Release of and improper reliance on this document without written authorization and adaptation by Kimley-Horn and Associates, Inc. shall be without liability to Kimley-Horn and Associates, Inc.

This document, together with the concepts and designs presented herein, is intended only for the specific purpose and client for which it was prepared. Reuse of and improper reliance on this document without written authorization and adaptation by Kimley-Horn and Associates, Inc. shall be without liability to Kimley-Horn and Associates, Inc.



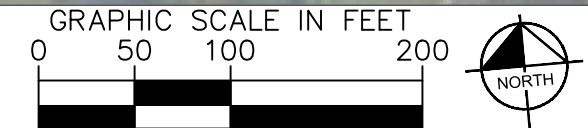
**NORTH CRIEVE HALL
TRAFFIC CALMING**
NASHVILLE, TN

**DRAFT
PRELIMINARY
PLANS**
FOR REVIEW ONLY

NO.	REVISIONS	DATE	BY
1			
2			
3			
4			
5			
6			
7			
8			
9			
10			

DESIGNED BY: EJW
 CHECKED BY: NDOT
 DATE: 9/24/2022
 KIMLEY-HORN PROJECT NO. 118900005

CONCEPT PLAN
 SHEET NUMBER
19



This document, together with the concepts and designs presented herein, is intended only for the specific purpose and client for which it was prepared. Release of and improper reliance on this document without written authorization and adaptation by Kimley-Horn and Associates, Inc. shall be without liability to Kimley-Horn and Associates, Inc.



NDOT

**NORTH CRIEVE HALL
TRAFFIC CALMING
NASHVILLE, TN**

**DRAFT
PRELIMINARY
PLANS
FOR REVIEW ONLY**

NO.	REVISIONS	DATE	BY
1			
2			
3			
4			
5			
6			
7			
8			
9			
10			

DESIGNED BY: _____
 DRAWN BY: E.J.W.
 CHECKED BY: NDOT
 DATE: 9/24/2022
 KIMLEY-HORN PROJECT NO. 11890005

CONCEPT PLAN
SHEET NUMBER
20

This document, together with the concepts and designs presented herein, is intended only for the specific purpose and client for which it was prepared. Release of and improper reliance on this document without written authorization and adaptation by Kimley-Horn and Associates, Inc. shall be without liability to Kimley-Horn and Associates, Inc.



NDOT

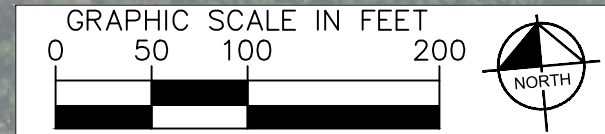
NORTH CRIEVE HALL TRAFFIC CALMING NASHVILLE, TN

**DRAFT
PRELIMINARY
PLANS**
FOR REVIEW ONLY

NO.	REVISIONS	DATE	BY
1			
2			
3			
4			
5			
6			
7			
8			
9			
10			

DESIGNED BY:	EJW
DRAWN BY:	EJW
CHECKED BY:	NDOT
DATE:	9/24/2022
KIMLEY-HORN PROJECT NO. 11890005	

CONCEPT PLAN
SHEET NUMBER
21



This document, together with the concepts and designs presented herein, is intended only for the specific purpose and client for which it was prepared. Release of and improper reliance on the documents without written authorization and adaptation by Kimley-Horn and Associates, Inc. shall be without liability to Kimley-Horn and Associates, Inc.



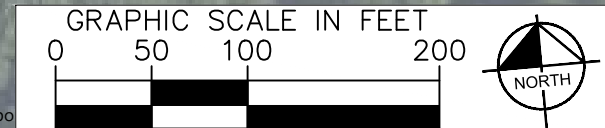
NDOT

**NORTH CRIEVE HALL
TRAFFIC CALMING
NASHVILLE, TN**

**DRAFT
PRELIMINARY
PLANS
FOR REVIEW ONLY**

NO.	REVISIONS	DATE	BY
1			
2			
3			
4			
5			
6			
7			
8			
9			
10			

DESIGNED BY: _____ RBW
 DRAWN BY: _____ EJW
 CHECKED BY: _____ NDOT
 DATE: 9/24/2022
 KIMLEY-HORN PROJECT NO. 11890005



CONCEPT PLAN
 SHEET NUMBER
22

This document, together with the concepts and designs presented herein, is intended only for the specific purpose and client for which it was prepared. Reuse of and improper reliance on this document without written authorization and adaptation by Kimley-Horn and Associates, Inc. shall be without liability to Kimley-Horn and Associates, Inc.



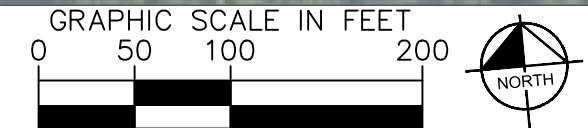
**NORTH CRIEVE HALL
TRAFFIC CALMING
NASHVILLE, TN**

**DRAFT
PRELIMINARY
PLANS
FOR REVIEW ONLY**

NO.	REVISIONS	DATE	BY
1			
2			
3			
4			
5			
6			
7			
8			
9			
10			

DESIGNED BY: EJW
 DRAWN BY: EJW
 CHECKED BY: NDOT
 DATE: 9/24/2022
 KIMLEY-HORN PROJECT NO. 11890005

CONCEPT PLAN
 SHEET NUMBER
23



This document, together with the concepts and designs presented herein, is intended only for the specific purpose and client for which it was prepared. Reuse of and improper reliance on the document without written authorization and adaptation by Kimley-Horn and Associates, Inc. shall be without liability to Kimley-Horn and Associates, Inc.



NDOT

**NORTH CRIEVE HALL
TRAFFIC CALMING
NASHVILLE, TN**

**DRAFT
PRELIMINARY
PLANS
FOR REVIEW ONLY**

NO.	REVISIONS	DATE	BY	RBW
1				
2				
3				
4				
5				
6				
7				
8				
9				
10				

DESIGNED BY: EJV
 DRAWN BY: EJV
 CHECKED BY: NDOT
 DATE: 9/24/2022
 KIMLEY-HORN PROJECT NO. 11890005

CONCEPT PLAN
 SHEET NUMBER
24

This document, together with the concepts and designs presented herein, is intended only for the specific purpose and client for which it was prepared. Reuse of and improper reliance on this document without written authorization and adaptation by Kimley-Horn and Associates, Inc. shall be without liability to Kimley-Horn and Associates, Inc.



LANDON DRIVE

BRNTLAWN DRIVE

TROUSDALE DRIVE

HOGAN ROAD

CRIEVE ROAD

NO TRAFFIC CALMING MEASURES IN THIS AREA

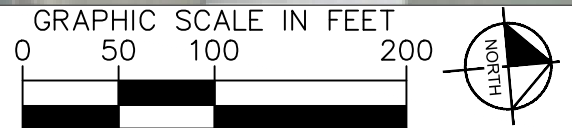
NDOT

**NORTH CRIEVE HALL
TRAFFIC CALMING
NASHVILLE, TN**

**DRAFT
PRELIMINARY
PLANS
FOR REVIEW ONLY**

NO.	REVISIONS	DATE	BY
1			
2			
3			
4			
5			
6			
7			
8			
9			
10			

DESIGNED BY: EJW
 DRAWN BY: NDOT
 CHECKED BY: NDOT
 DATE: 9/24/2022
 KIMLEY-HORN PROJECT NO. 11890005



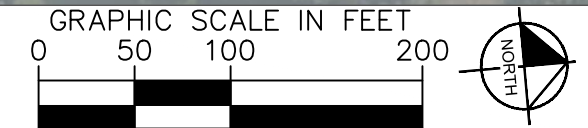
CONCEPT PLAN
 SHEET NUMBER
25

This document, together with the concepts and designs presented herein, is intended only for the specific purpose and client for which it was prepared. Reuse of and improper reliance on this document without written authorization and adaptation by Kimley-Horn and Associates, Inc. shall be without liability to Kimley-Horn and Associates, Inc.



NO.	REVISIONS	DATE	BY	REV
1				
2				
3				
4				
5				
6				
7				
8				
9				
10				

DESIGNED BY: EJW
 CHECKED BY: NDOT
 DATE: 9/24/2022
 KIMLEY-HORN PROJECT NO. 11890005

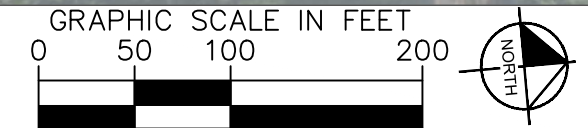


This document, together with the concepts and designs presented herein, is intended only for the specific purpose and client for which it was prepared. Release of and improper reliance on this document without written authorization and adaptation by Kimley-Horn and Associates, Inc. shall be without liability to Kimley-Horn and Associates, Inc.



NO.	REVISIONS	DATE	BY	RBW
1				
2				
3				
4				
5				
6				
7				
8				
9				
10				

DESIGNED BY: EJW
 DRAWN BY: NDOT
 CHECKED BY: NDOT
 DATE: 9/24/2022
 KIMLEY-HORN PROJECT NO. 11890005



This document, together with the concepts and designs presented herein, is intended only for the specific purpose and client for which it was prepared. Release of and improper reliance on this document without written authorization and adaptation by Kimley-Horn and Associates, Inc. shall be without liability to Kimley-Horn and Associates, Inc.



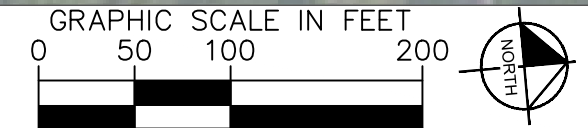
NDOT

**NORTH CRIEVE HALL
TRAFFIC CALMING
NASHVILLE, TN**

**DRAFT
PRELIMINARY
PLANS
FOR REVIEW ONLY**

NO.	REVISIONS	DATE	BY
1			
2			
3			
4			
5			
6			
7			
8			
9			
10			

DESIGNED BY: EJW
 DRAWN BY: NDOT
 CHECKED BY: NDOT
 DATE: 9/24/2022
 KIMLEY-HORN PROJECT NO. 11890005



© 2021 Microsoft Corpo