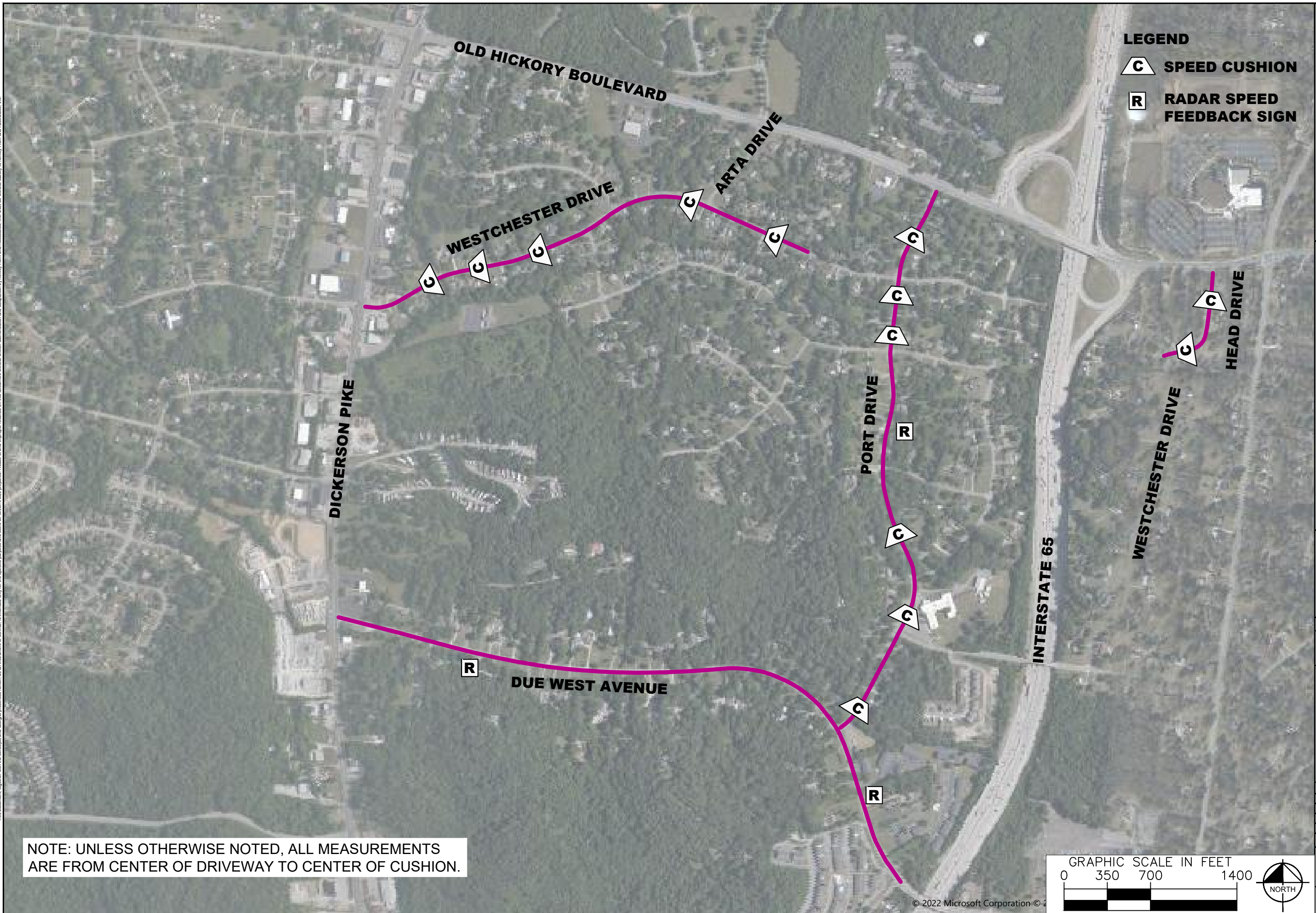


This document, together with the concepts and designs presented herein, is intended only for the specific purpose and client for which it was prepared. Release of and improper reliance on this document without written authorization and adaptation by Kimley-Horn and Associates, Inc. shall be without liability to Kimley-Horn and Associates, Inc.



NOTE: UNLESS OTHERWISE NOTED, ALL MEASUREMENTS ARE FROM CENTER OF DRIVEWAY TO CENTER OF CUSHION.

**LEGEND**  
**C** SPEED CUSHION  
**R** RADAR SPEED FEEDBACK SIGN



KEMPER HEIGHTS  
TRAFFIC CALMING  
NASHVILLE, TN

DRAFT  
PRELIMINARY  
PLANS  
FOR REVIEW ONLY

NO.	REVISIONS	DATE	BY
1			
2			
3			
4			
5			
6			
7			
8			
9			
10			

DESIGNED BY: ALP  
DRAWN BY: LBR  
CHECKED BY: NDOT  
DATE: 7/30/2022  
KIMLEY-HORN PROJECT NO. 11890005

CONCEPT PLAN  
SHEET NUMBER  
**01**

This document, together with the concepts and designs presented herein, is intended only for the specific purpose and client for which it was prepared. Release of and improper reliance on this document without written authorization and adaptation by Kimley-Horn and Associates, Inc. shall be without liability to Kimley-Horn and Associates, Inc.



**LEGEND**  
**R** RADAR SPEED FEEDBACK SIGN

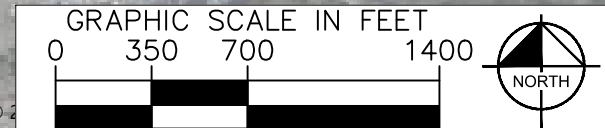


**KEMPER HEIGHTS  
TRAFFIC CALMING  
NASHVILLE, TN**

**DRAFT  
PRELIMINARY  
PLANS  
FOR REVIEW ONLY**

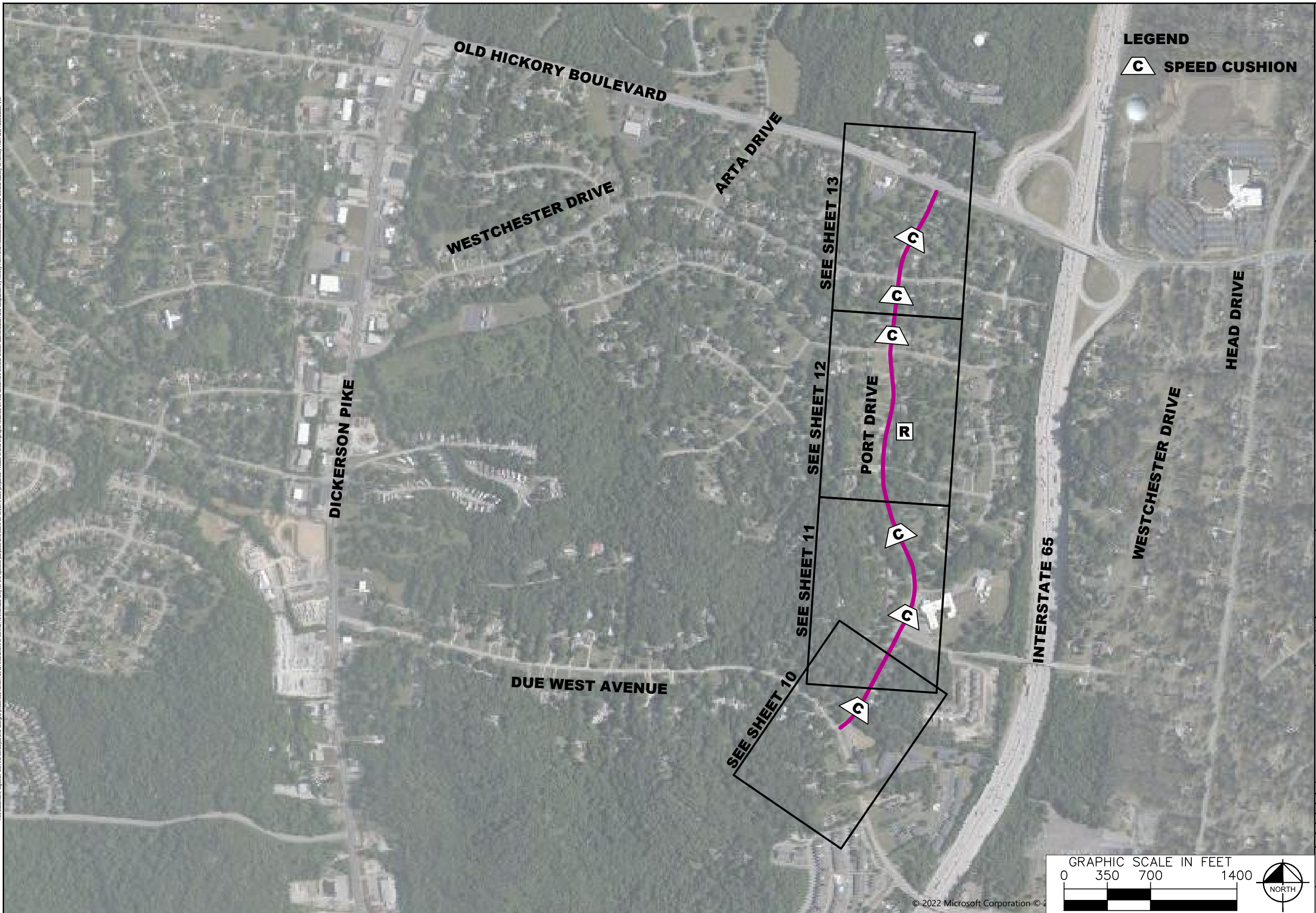
NO.	REVISIONS	DATE	BY
1			
2			
3			
4			
5			
6			
7			
8			
9			
10			


DESIGNED BY: ALP  
DRAWN BY: LBR  
CHECKED BY: NDOT  
DATE: 7/30/2022  
KIMLEY-HORN PROJECT NO. 11890005



CONCEPT PLAN  
SHEET NUMBER  
**02**

This document, together with the concepts and designs presented herein, is intended only for the specific purpose and client for which it was prepared. Release of and improper reliance on this document without written authorization and adaptation by Kimley-Horn and Associates, Inc. shall be without liability to Kimley-Horn and Associates, Inc.



**LEGEND**  
 **SPEED CUSHION**

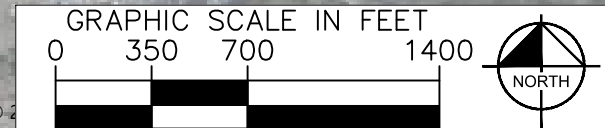


**KEMPER HEIGHTS  
 TRAFFIC CALMING  
 NASHVILLE, TN**

**DRAFT  
 PRELIMINARY  
 PLANS  
 FOR REVIEW ONLY**

NO.	REVISIONS	DATE	BY
1			
2			
3			
4			
5			
6			
7			
8			
9			
10			

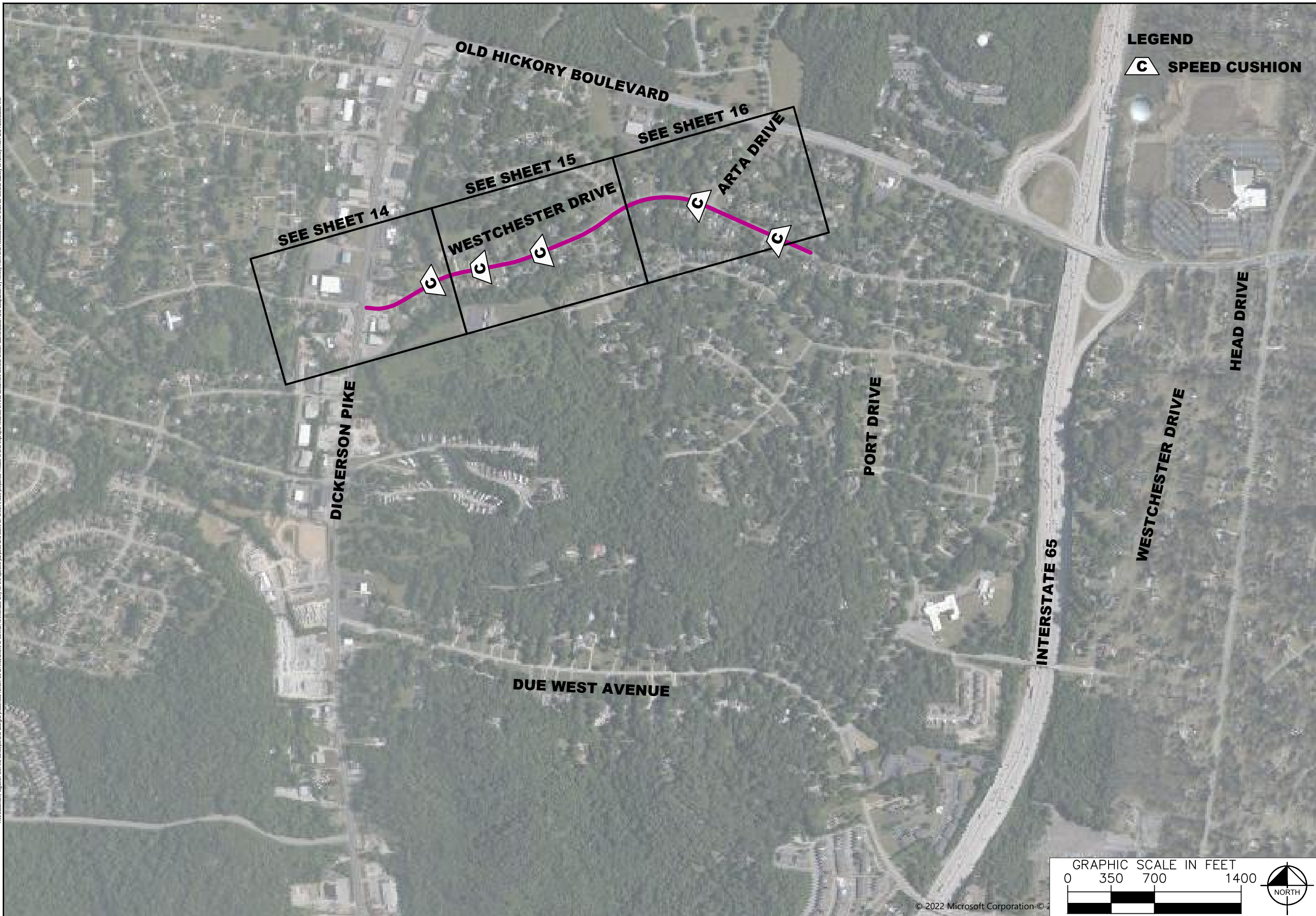
DESIGNED BY: ALP  
 DRAWN BY: LBR  
 CHECKED BY: NDOT  
 DATE: 7/30/2022  
 KIMLEY-HORN PROJECT NO. 11890005




© 2022 Microsoft Corporation

CONCEPT PLAN  
 SHEET NUMBER  
**03**

This document, together with the concepts and designs presented herein, is intended only for the specific purpose and client for which it was prepared. Release of and improper reliance on this document without written authorization and adaptation by Kimley-Horn and Associates, Inc. shall be without liability to Kimley-Horn and Associates, Inc.



**LEGEND**  
 **SPEED CUSHION**



**KEMPER HEIGHTS  
 TRAFFIC CALMING  
 NASHVILLE, TN**

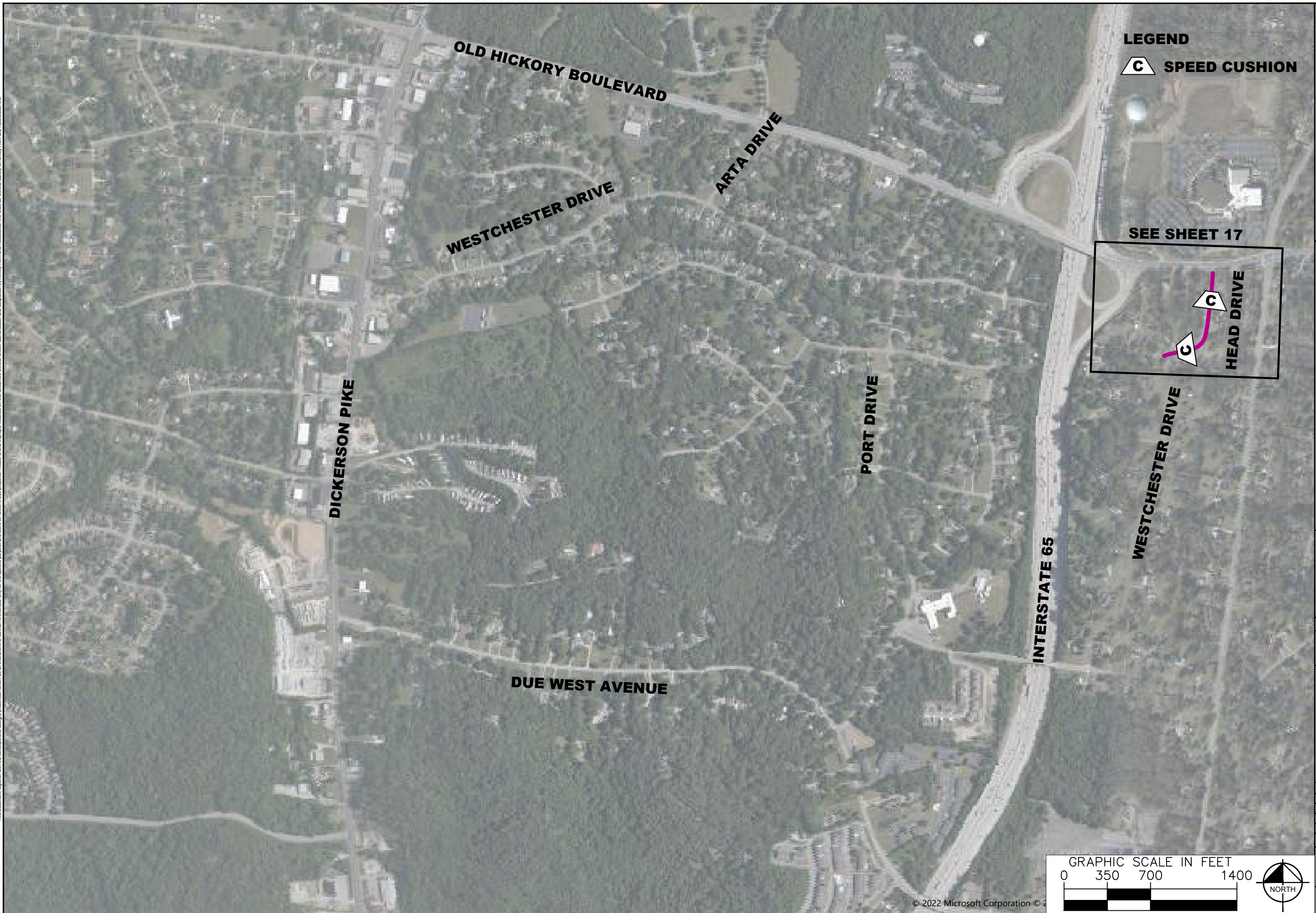
**DRAFT  
 PRELIMINARY  
 PLANS  
 FOR REVIEW ONLY**


NO.	REVISIONS	DATE	BY
1			
2			
3			
4			
5			
6			
7			
8			
9			
10			

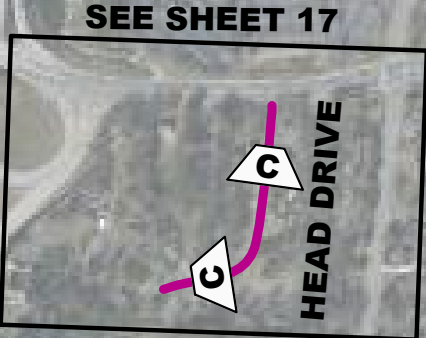
DESIGNED BY: ALP  
 DRAWN BY: LBK  
 CHECKED BY: NDQT  
 DATE: 7/30/2022  
 KIMLEY-HORN PROJECT NO. 11890005

CONCEPT PLAN  
 SHEET NUMBER  
**04**

This document, together with the concepts and designs presented herein, is intended only for the specific purpose and client for which it was prepared. Release of and improper reliance on this document without written authorization and adaptation by Kimley-Horn and Associates, Inc. shall be without liability to Kimley-Horn and Associates, Inc.



**LEGEND**  
 **SPEED CUSHION**



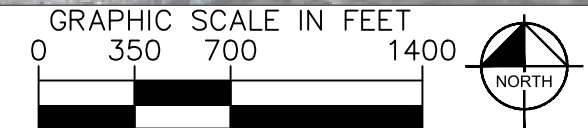
**KEMPER HEIGHTS  
TRAFFIC CALMING**  
NASHVILLE, TN

**DRAFT  
PRELIMINARY  
PLANS**  
FOR REVIEW ONLY

REVISIONS		DATE	BY

DESIGNED BY:	ALP
DRAWN BY:	LBK
CHECKED BY:	NDQT
DATE:	7/30/2022
KIMLEY-HORN PROJECT NO. 11890005	



© 2022 Microsoft Corporation

CONCEPT PLAN  
SHEET NUMBER  
**05**

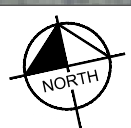
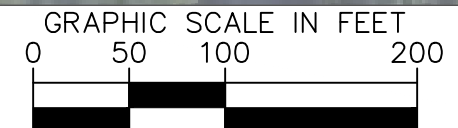


NO.	REVISIONS	DATE	BY
1			
2			
3			
4			
5			
6			
7			
8			
9			
10			

DESIGNED BY: ALP  
 DRAWN BY: LBK  
 CHECKED BY: NDOT  
 DATE: 7/30/2022  
 KIMLEY-HORN PROJECT NO. 11890005



RADAR FEEDBACK SIGN  
 33' EAST OF DRIVEWAY AT  
 1036 DUE WEST AVENUE



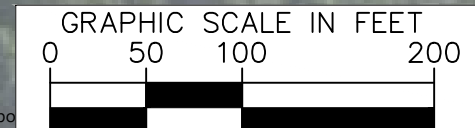
This document, together with the concepts and designs presented herein, is intended only for the specific purpose and client for which it was prepared. Reuse of and improper reliance on the document without written authorization and adaptation by Kimley-Horn and Associates, Inc. shall be without liability to Kimley-Horn and Associates, Inc.

This document, together with the concepts and designs presented herein, is intended only for the specific purpose and client for which it was prepared. Release of and improper reliance on this document without written authorization and adaptation by Kimley-Horn and Associates, Inc. shall be without liability to Kimley-Horn and Associates, Inc.



**NO TRAFFIC CALMING  
MEASURES PROPOSED  
IN THIS AREA**

**DUE WEST AVENUE**



**KEMPER HEIGHTS  
TRAFFIC CALMING  
NASHVILLE, TN**

**DRAFT  
PRELIMINARY  
PLANS  
FOR REVIEW ONLY**

NO.	REVISIONS	DATE	BY
1			
2			
3			
4			
5			
6			
7			
8			
9			
10			

DESIGNED BY: ALP  
DRAWN BY: LBK  
CHECKED BY: NDOT  
DATE: 7/30/2022  
KIMLEY-HORN PROJECT NO. 11890005

CONCEPT PLAN  
SHEET NUMBER  
**07**

This document, together with the concepts and designs presented herein, is intended only for the specific purpose and client for which it was prepared. Release of and improper reliance on the document without written authorization and adaptation by Kimley-Horn and Associates, Inc. shall be without liability to Kimley-Horn and Associates, Inc.



KEMPER HEIGHTS  
TRAFFIC CALMING  
NASHVILLE, TN

**DRAFT  
PRELIMINARY  
PLANS**  
FOR REVIEW ONLY

NO.	REVISIONS	DATE	BY
1			
2			
3			
4			
5			
6			
7			
8			
9			
10			

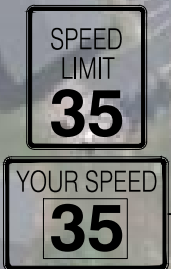
DESIGNED BY: ALP  
DRAWN BY: LBK  
CHECKED BY: NDOT  
DATE: 7/30/2022  
KIMLEY-HORN PROJECT NO. 11890005

GRAPHIC SCALE IN FEET  
0 50 100 200

© 2022 Microsoft Corp

CONCEPT PLAN  
SHEET NUMBER  
**08**





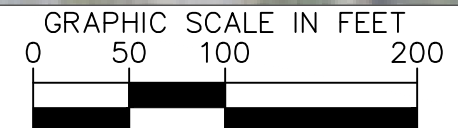
RADAR FEEDBACK SIGN  
64' NORTH OF DRIVEWAY  
AT 724 DUE WEST AVENUE

**DUE WEST AVENUE**

**OLD DUE WEST AVENUE**

714

721



**NDOT**

**KEMPER HEIGHTS  
TRAFFIC CALMING  
NASHVILLE, TN**

**DRAFT  
PRELIMINARY  
PLANS  
FOR REVIEW ONLY**

NO.	DATE	BY
1		
2		
3		
4		
5		
6		
7		
8		
9		
10		

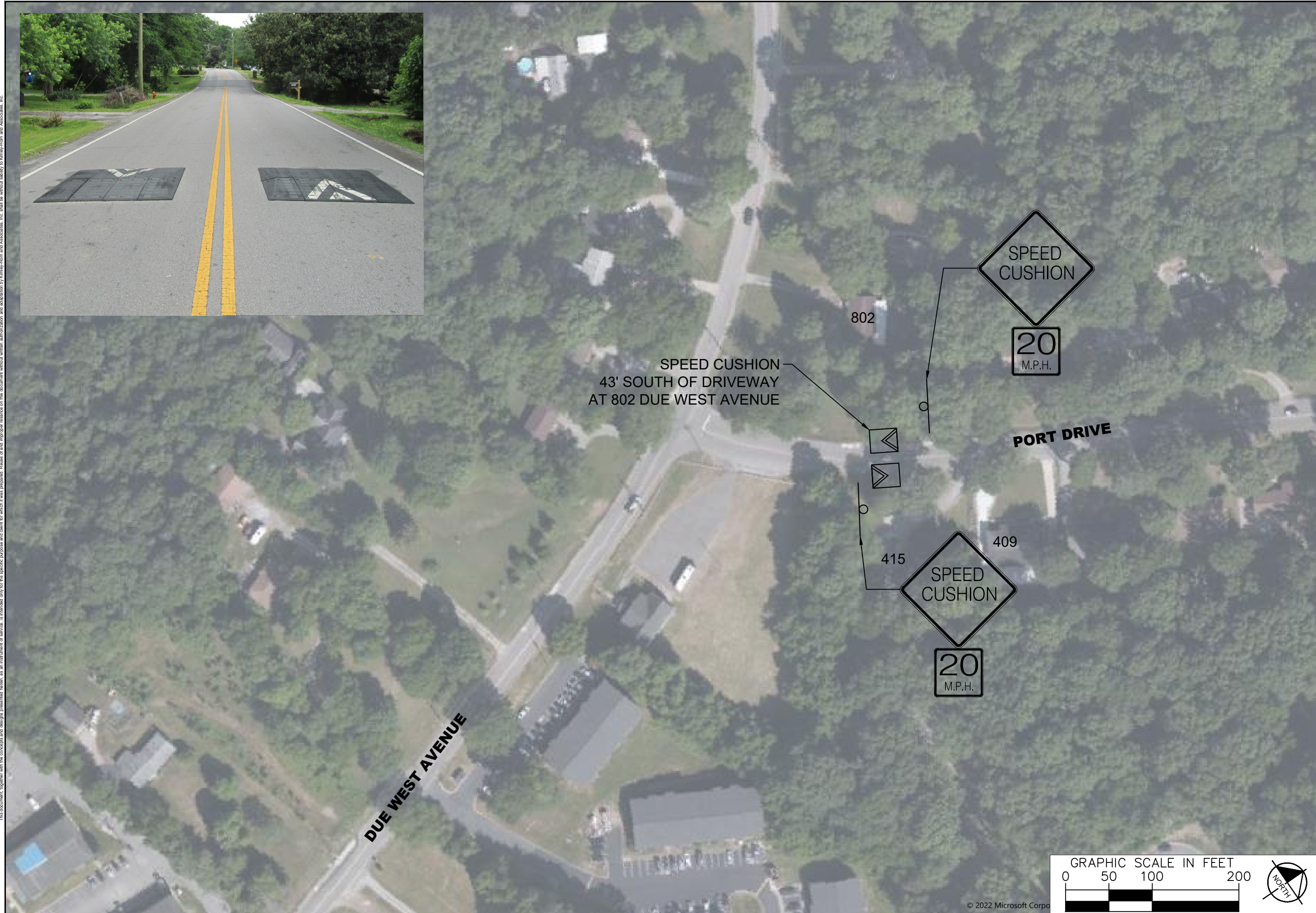
DESIGNED BY: ALP  
DRAWN BY: LBR  
CHECKED BY: NDDJ  
DATE: 7/30/2022  
KIMLEY-HORN PROJECT NO. 11890005

CONCEPT PLAN  
SHEET NUMBER  
**09**

This document, together with the concepts and designs presented herein, is intended only for the specific purpose and client for which it was prepared. Release of and improper reliance on the documents without written authorization and adaptation by Kimley-Horn and Associates, Inc. shall be without liability to Kimley-Horn and Associates, Inc.

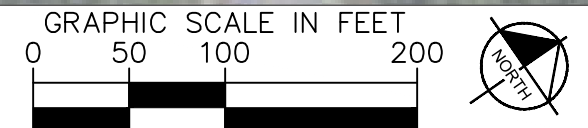


This document, together with the concepts and designs presented herein, is intended only for the specific purpose and client for which it was prepared. Reuse of and improper reliance on the document without written authorization and adaptation by Kimley-Horn and Associates, Inc. shall be without liability to Kimley-Horn and Associates, Inc.



NO.	REVISIONS	DATE	BY
1			
2			
3			
4			
5			
6			
7			
8			
9			
10			

DESIGNED BY: ALP  
 DRAWN BY: LBR  
 CHECKED BY: NDQT  
 DATE: 7/30/2022  
 KIMLEY-HORN PROJECT NO. 11890005



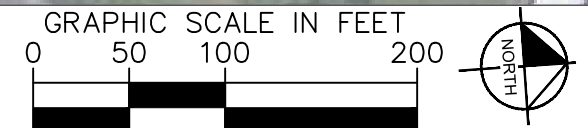


This document, together with the concepts and designs presented herein, is intended only for the specific purpose and client for which it was prepared. Release of and improper reliance on the document without written authorization and adaptation by Kimley-Horn and Associates, Inc. shall be without liability to Kimley-Horn and Associates, Inc.



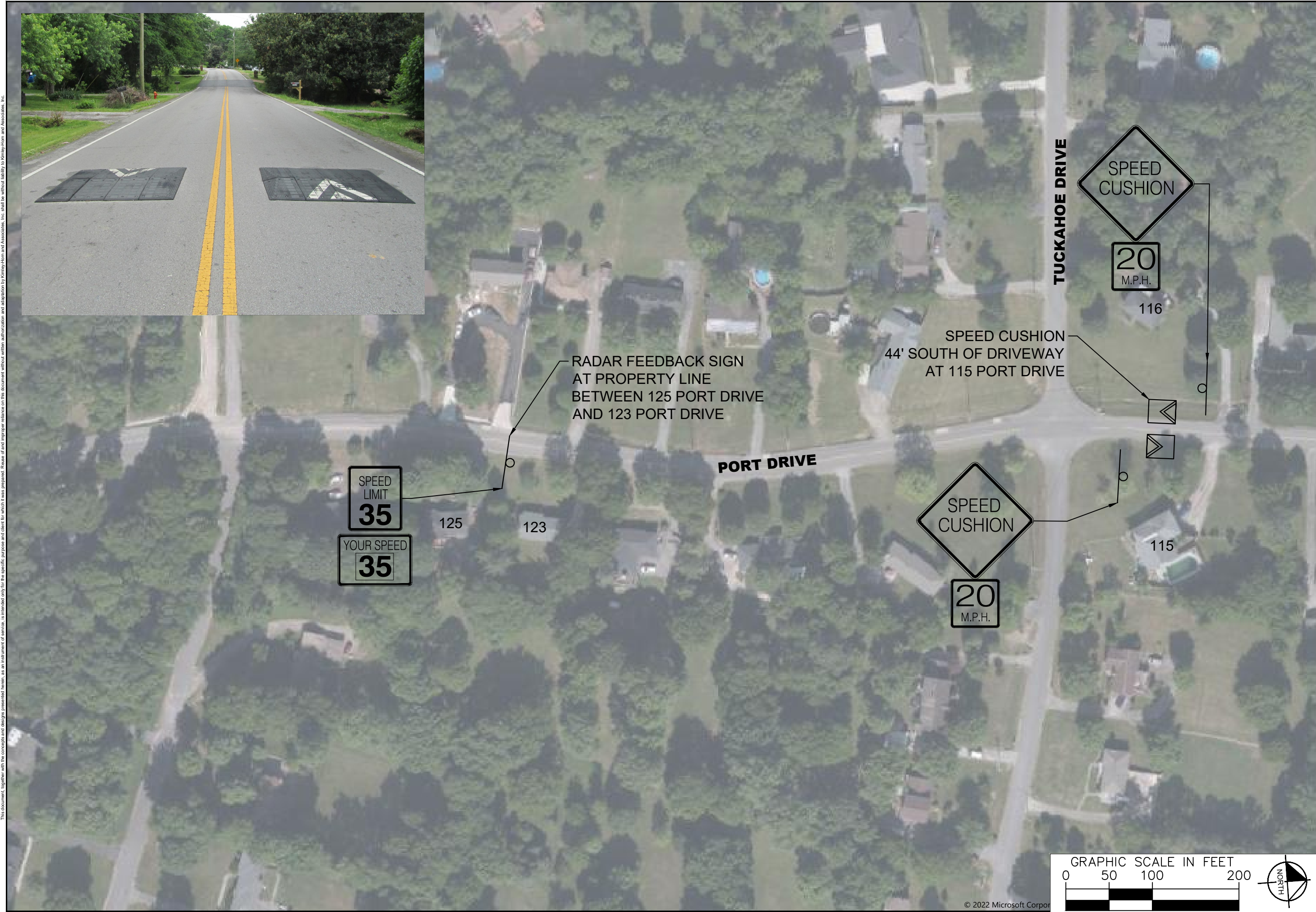
NO.	DATE	BY
1		
2		
3		
4		
5		
6		
7		
8		
9		
10		

DESIGNED BY:	ALP
DRAWN BY:	LBK
CHECKED BY:	NDQT
DATE:	7/30/2022
KIMLEY-HORN PROJECT NO. 11890005	





This document, together with the concepts and designs presented herein, is intended only for the specific purpose and client for which it was prepared. Release of and improper reliance on the document without written authorization and adaptation by Kimley-Horn and Associates, Inc. shall be without liability to Kimley-Horn and Associates, Inc.



SPEED LIMIT  
**35**  
YOUR SPEED  
**35**

SPEED CUSHION  
**20**  
M.P.H.

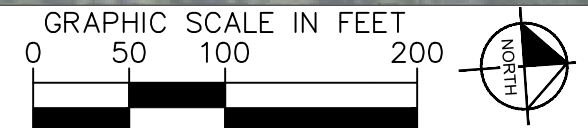
SPEED CUSHION  
**20**  
M.P.H.

RADAR FEEDBACK SIGN  
AT PROPERTY LINE  
BETWEEN 125 PORT DRIVE  
AND 123 PORT DRIVE

SPEED CUSHION  
44' SOUTH OF DRIVEWAY  
AT 115 PORT DRIVE

TUCKAHOE DRIVE

PORT DRIVE



NO.	REVISIONS	DATE	BY
1			
2			
3			
4			
5			
6			
7			
8			
9			
10			

DESIGNED BY: ALP  
DRAWN BY: LBR  
CHECKED BY: NDOT  
DATE: 7/30/2022  
KIMLEY-HORN PROJECT NO. 11890005



701 SPEED CUSHION  
30' SOUTH OF POLE #06605004 IN  
YARD AT 701 WESTCHESTER DRIVE

**PORT DRIVE**



106

SPEED CUSHION  
48' NORTH OF DRIVEWAY  
AT 106 PORT DRIVE



20  
M.P.H.

107

105

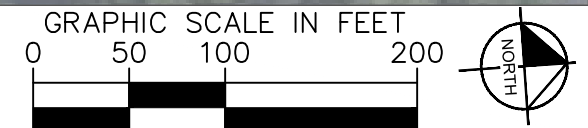
**W OLD HICKORY BOULEVARD**

611



20  
M.P.H.

**WESTCHESTER DRIVE**



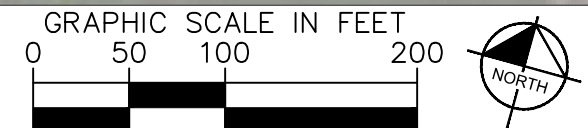
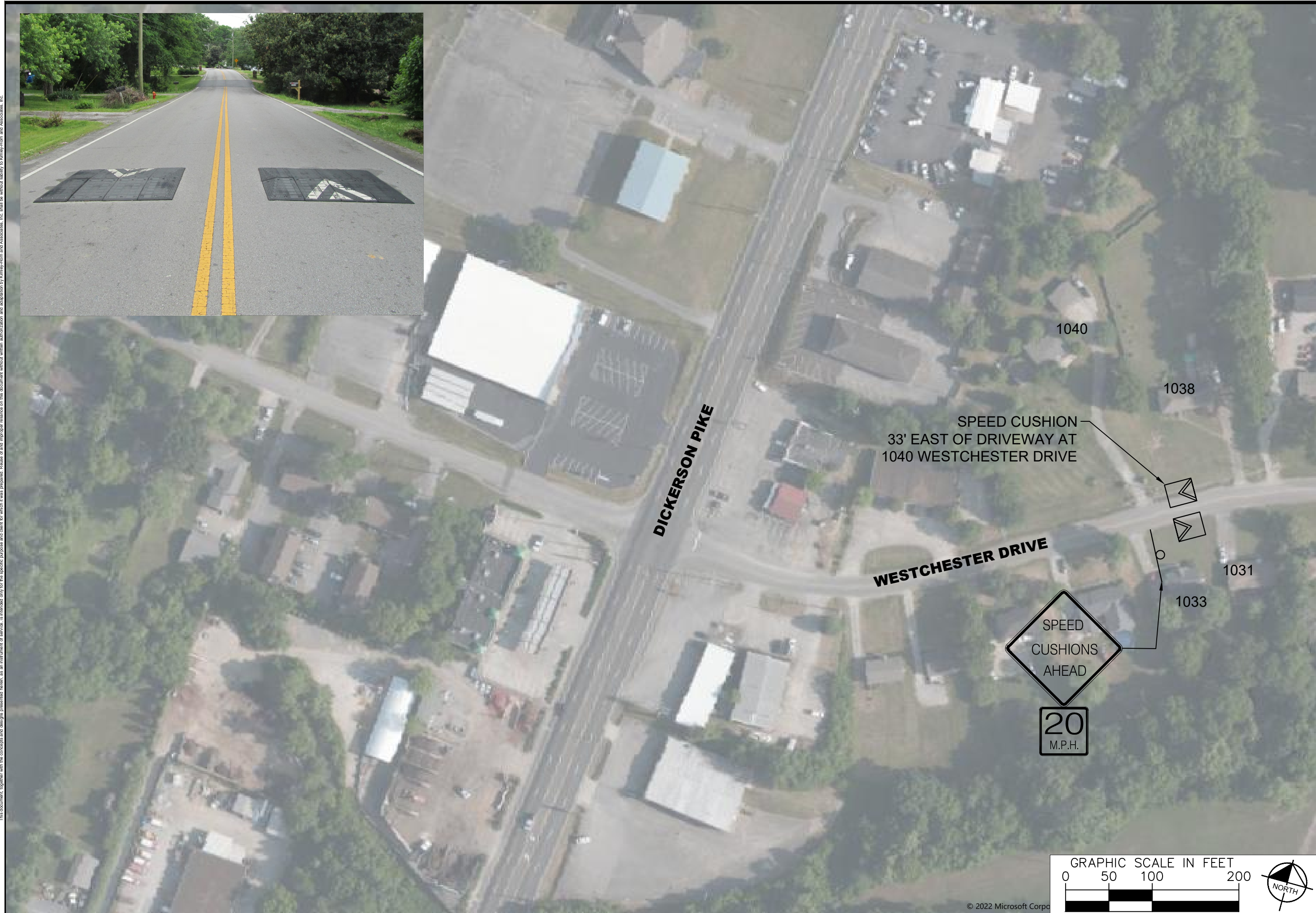
NO.	DATE	BY	REVISIONS
1			
2			
3			
4			
5			
6			
7			
8			
9			
10			

DESIGNED BY: ALP  
DRAWN BY: LBR  
CHECKED BY: NDOT  
DATE: 7/30/2022  
KIMLEY-HORN PROJECT NO. 11890005

This document, together with the concepts and designs presented herein, is intended only for the specific purpose and client for which it was prepared. Release of and improper reliance on this document without written authorization and adaptation by Kimley-Horn and Associates, Inc. shall be without liability to Kimley-Horn and Associates, Inc.



This document, together with the concepts and designs presented herein, is intended only for the specific purpose and client for which it was prepared. Release of and improper reliance on the document without written authorization and adaptation by Kimley-Horn and Associates, Inc. shall be without liability to Kimley-Horn and Associates, Inc.



NO.	DATE	BY
1		
2		
3		
4		
5		
6		
7		
8		
9		
10		



SPEED CUSHION  
30' EAST OF  
DRIVEWAY AT 1023  
WESTCHESTER  
DRIVE



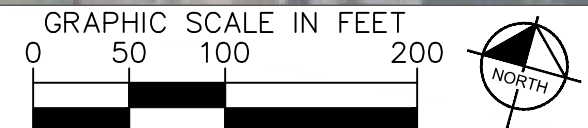
SPEED CUSHION  
32' EAST OF DRIVEWAY AT  
1009 WESTCHESTER DRIVE



**WESTCHESTER DRIVE**

**KEMPER DRIVE S**

**KEMPER DRIVE N**

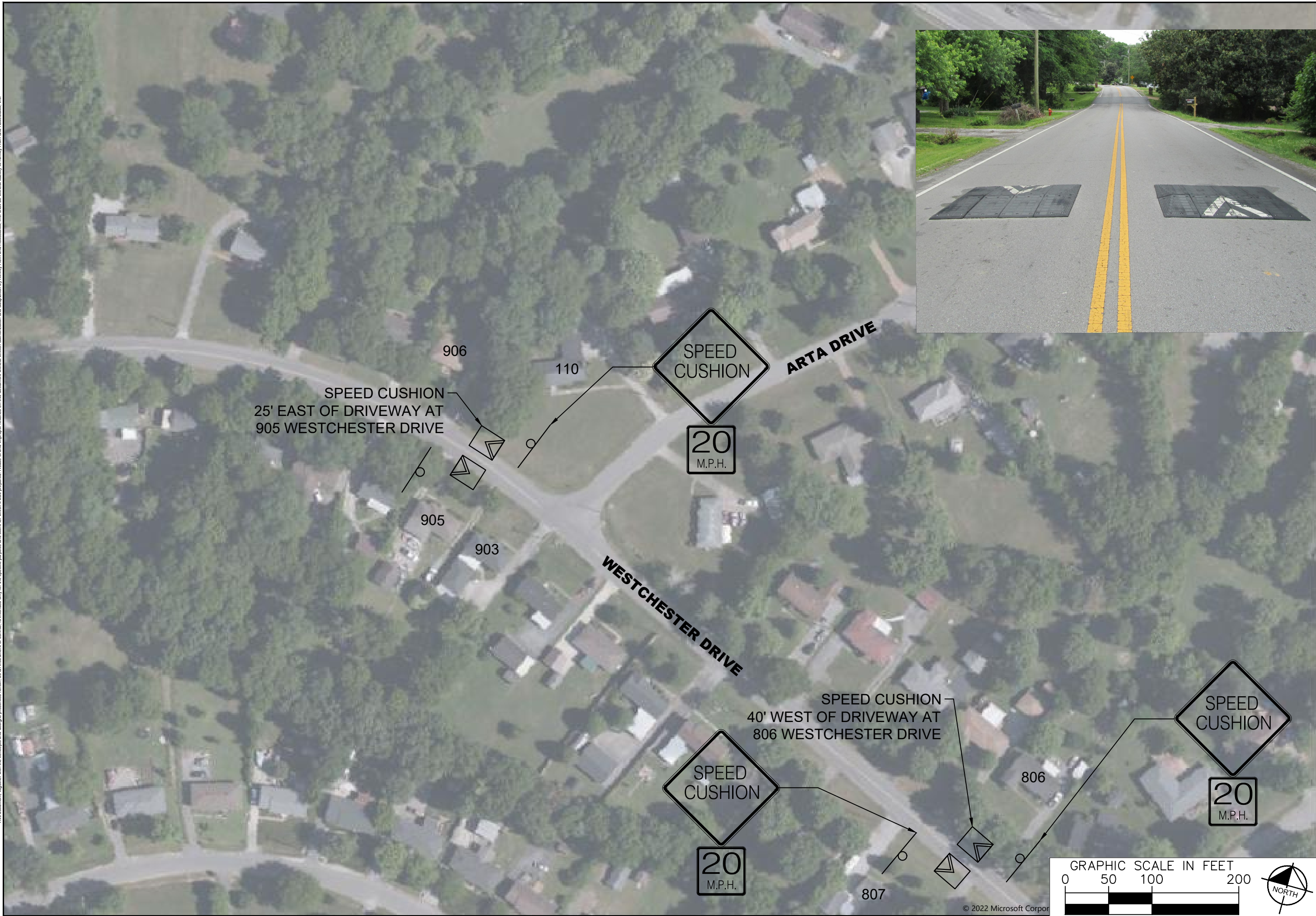


NO.	REVISIONS	DATE	BY
1			
2			
3			
4			
5			
6			
7			
8			
9			
10			

DESIGNED BY: ALP  
 DRAWN BY: LBR  
 CHECKED BY: NDOJ  
 DATE: 7/30/2022  
 KIMLEY-HORN PROJECT NO. 11890005

This document, together with the concepts and designs presented herein, is intended only for the specific purpose and client for which it was prepared. Reuse of and improper reliance on the document without written authorization and adaptation by Kimley-Horn and Associates, Inc. shall be without liability to Kimley-Horn and Associates, Inc.

This document, together with the concepts and designs presented herein, is intended only for the specific purpose and client for which it was prepared. Release of and improper reliance on the document without written authorization and adaptation by KIMLEY-HORN and Associates, Inc. shall be without liability to KIMLEY-HORN and Associates, Inc.



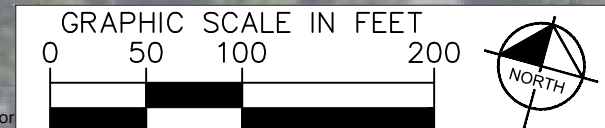
KEMPER HEIGHTS  
TRAFFIC CALMING  
NASHVILLE, TN

DRAFT  
PRELIMINARY  
PLANS  
FOR REVIEW ONLY

NO.	DATE	BY	REVISIONS
1			
2			
3			
4			
5			
6			
7			
8			
9			
10			

DESIGNED BY: ALP  
 DRAWN BY: LBK  
 CHECKED BY: NDOT  
 DATE: 7/30/2022  
 KIMLEY-HORN PROJECT NO. 11890005

CONCEPT PLAN  
 SHEET NUMBER  
**16**



© 2022 Microsoft Corpor





This document, together with the concepts and designs presented herein, is intended only for the specific purpose and client for which it was prepared. Reuse of and improper reliance on the document without written authorization and adaptation by Kimley-Horn and Associates, Inc. shall be without liability to Kimley-Horn and Associates, Inc.



**KEMPER HEIGHTS  
TRAFFIC CALMING  
NASHVILLE, TN**

**DRAFT  
PRELIMINARY  
PLANS  
FOR REVIEW ONLY**

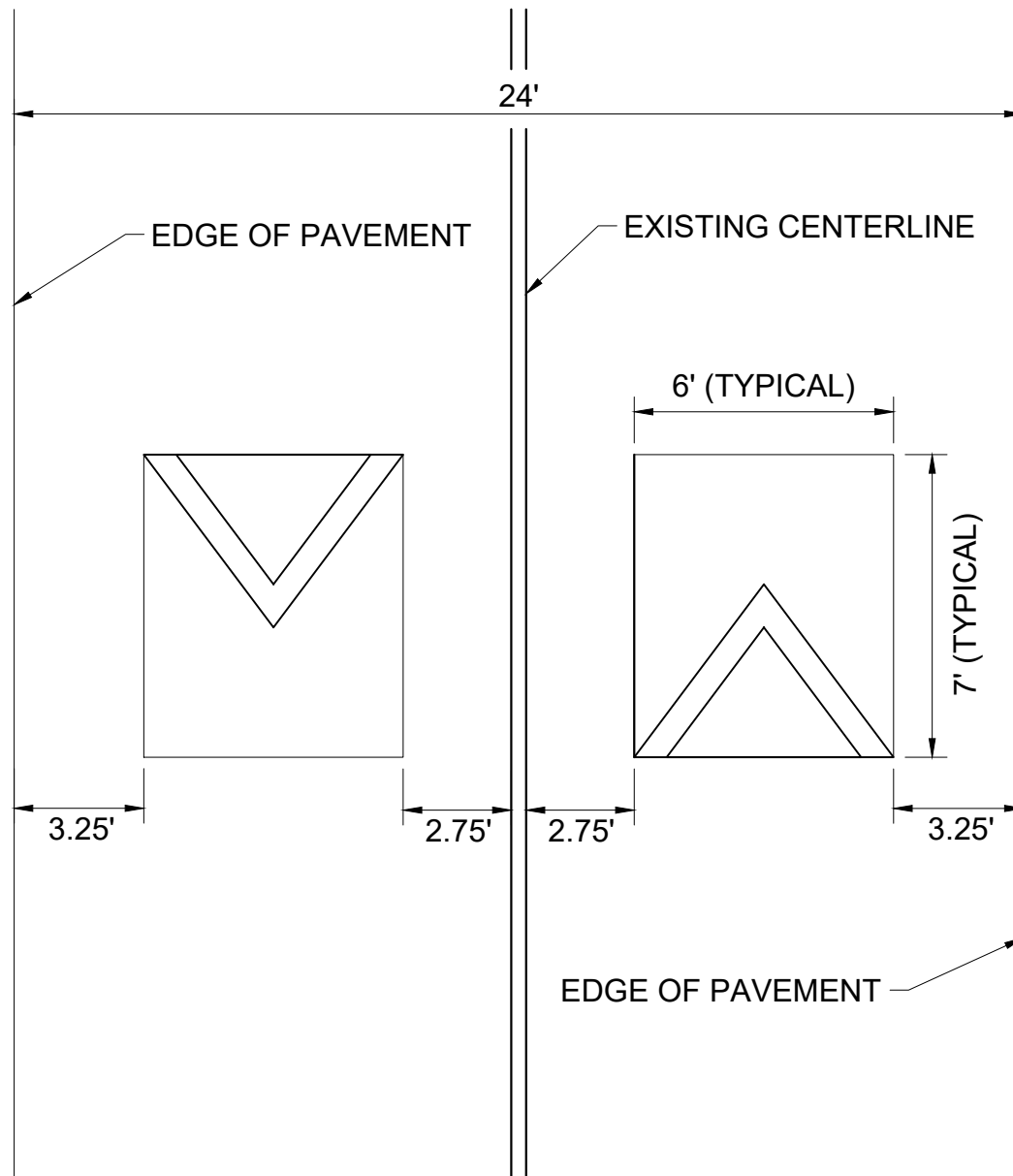
NO.	DATE	BY	REVISIONS
1			
2			
3			
4			
5			
6			
7			
8			
9			
10			

DESIGNED BY: ALP  
 DRAWN BY: LBR  
 CHECKED BY: NDQT  
 DATE: 7/30/2022  
 KIMLEY-HORN PROJECT NO. 11890005

CONCEPT PLAN  
 SHEET NUMBER  
**17**

This document, together with the concepts and designs presented herein, is intended only for the specific purpose and client for which it was prepared. Release of and improper reliance on the documents without written authorization and adaptation by Kimley-Horn and Associates, Inc. shall be without liability to Kimley-Horn and Associates, Inc.

### SPEED CUSHION CONFIGURATION



**KEMPER HEIGHTS  
TRAFFIC CALMING**  
NASHVILLE, TN

**DRAFT  
PRELIMINARY  
PLANS**  
FOR REVIEW ONLY

NO.	REVISIONS	DATE	BY
1			
2			
3			
4			
5			
6			
7			
8			
9			
10			

DESIGNED BY: ALP  
 DRAWN BY: LRB  
 CHECKED BY: NDQT  
 DATE: 7/30/2022  
 KIMLEY-HORN PROJECT NO. 118900005

DETAIL

SHEET NUMBER  
**18**