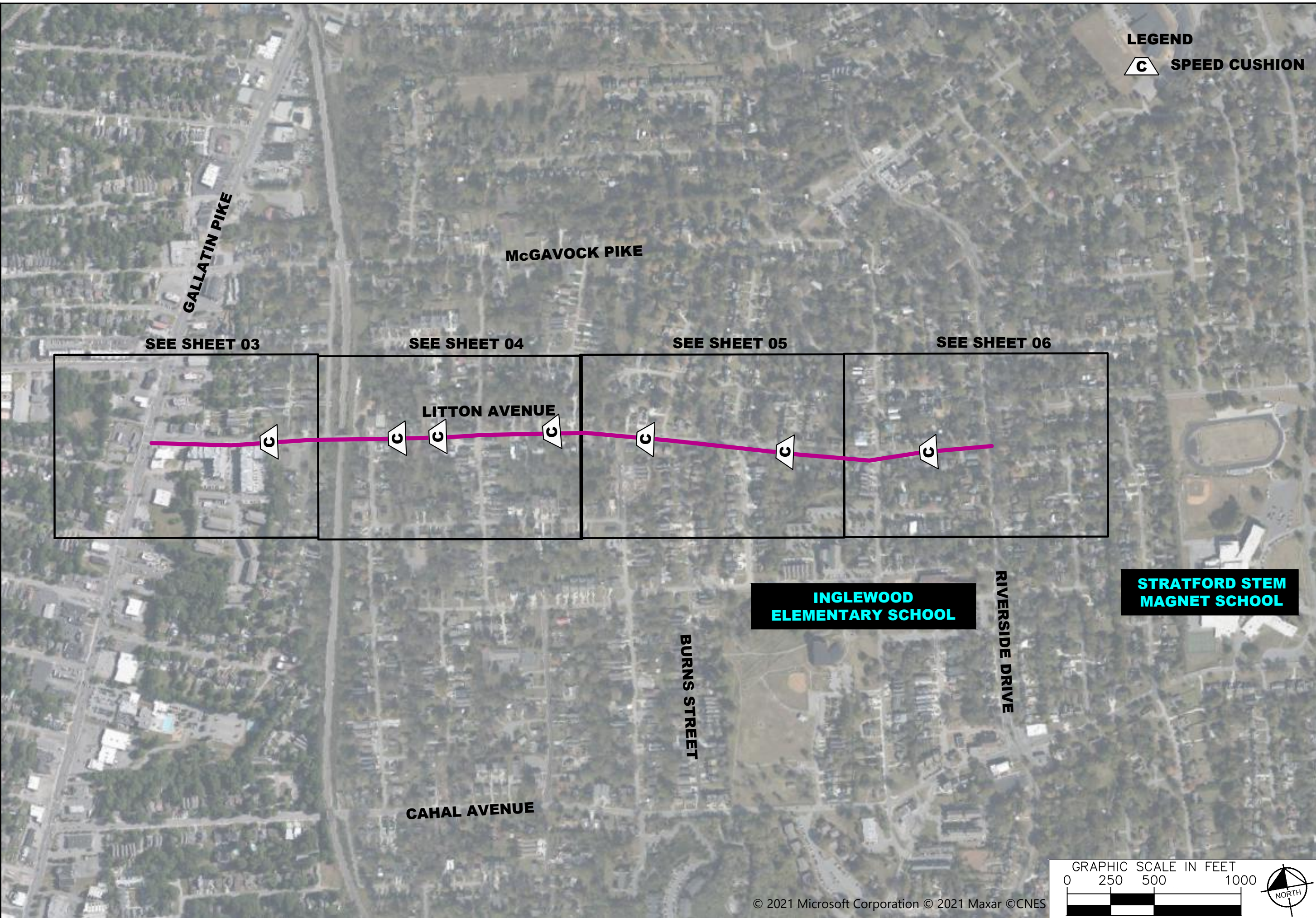


This document, together with the concepts and designs presented herein, is intended only for the specific purpose and client for which it was prepared. Reuse of and improper reliance on this document without written authorization and adaptation by Kimley-Horn and Associates, Inc. shall be without liability to Kimley-Horn and Associates, Inc.



LEGEND
C SPEED CUSHION



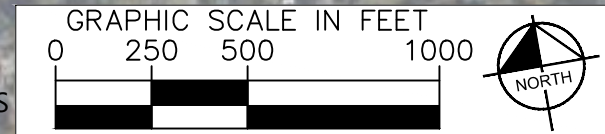
LITTON / BURNS
TRAFFIC CALMING
NASHVILLE, TN

DRAFT
PRELIMINARY
PLANS
FOR REVIEW ONLY

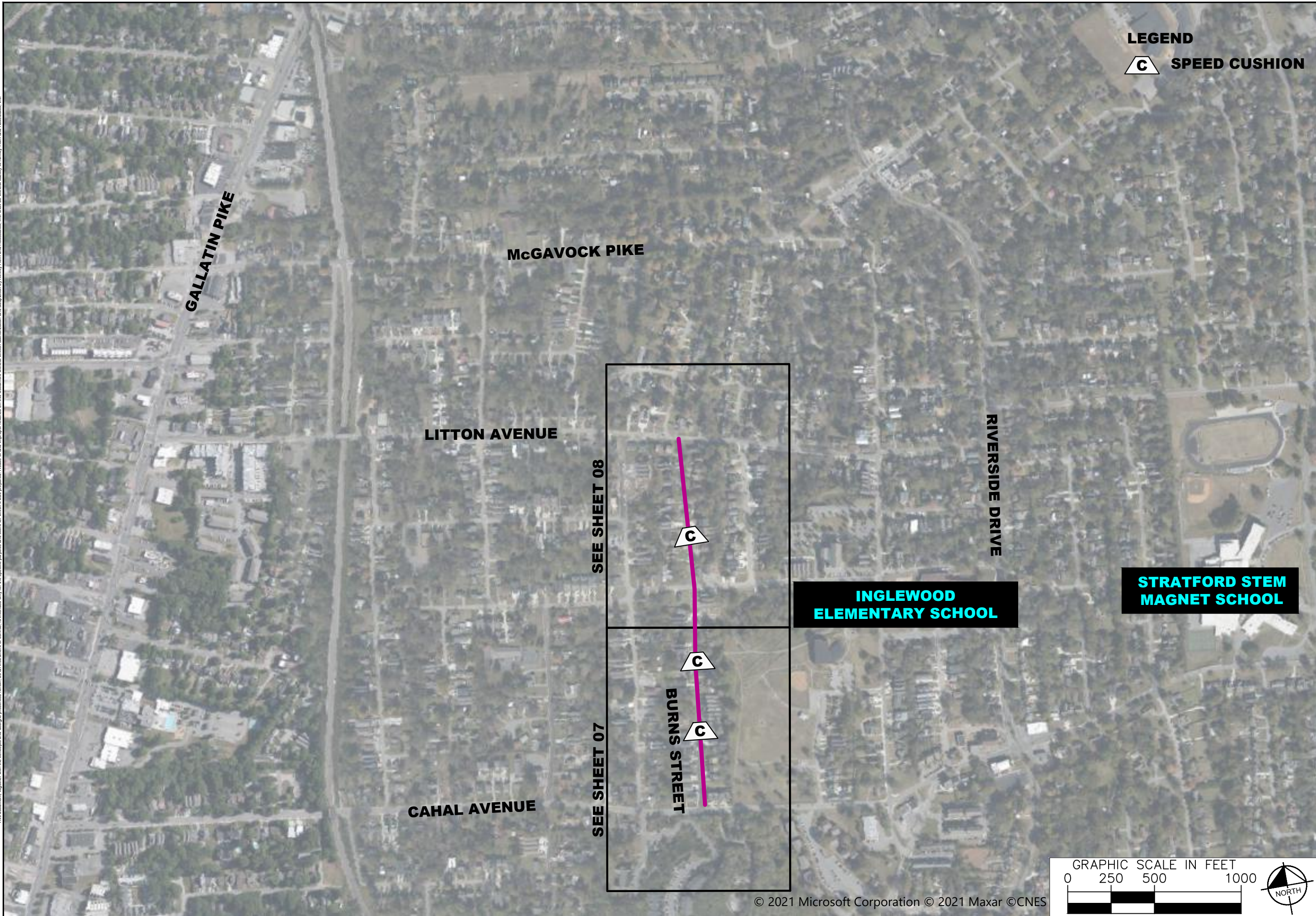
NO.	REVISIONS	DATE	BY
1			
2			
3			
4			
5			
6			
7			
8			
9			
10			

DESIGNED BY: ALB
 DRAWN BY: EJW
 CHECKED BY: NDOT
 DATE: 9/27/2022
 KIMLEY-HORN PROJECT NO. 118000005

CONCEPT PLAN
 SHEET NUMBER
01



This document, together with the concepts and designs presented herein, is intended only for the specific purpose and client for which it was prepared. Release of and improper reliance on this document without written authorization and adaptation by Kimley-Horn and Associates, Inc. shall be without liability to Kimley-Horn and Associates, Inc.



LEGEND
C SPEED CUSHION



LITTON / BURNS
TRAFFIC CALMING
NASHVILLE, TN

DRAFT
PRELIMINARY
PLANS
FOR REVIEW ONLY

NO.	REVISIONS	DATE	BY
1			
2			
3			
4			
5			
6			
7			
8			
9			
10			

DESIGNED BY: ALB
 DRAWN BY: EJW
 CHECKED BY: NDOT
 DATE: 9/27/2022
 KIMLEY-HORN PROJECT NO. 118000005

CONCEPT PLAN
 SHEET NUMBER
02

This document, together with the concepts and designs presented herein, is intended only for the specific purpose and client for which it was prepared. Reuse of and improper reliance on the document without written authorization and adaptation by Kimley-Horn and Associates, Inc. shall be without liability to Kimley-Horn and Associates, Inc.

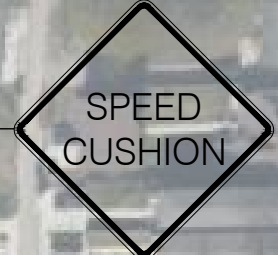


GALLATIN PIKE

DAVIS STREET

LITTON AVENUE

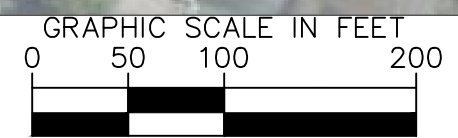
BRONTE AVENUE



SPEED CUSHION CONFIGURATION A
23' EAST OF DRIVEWAY AT
1206 LITTON AVENUE

1128

1206



NDOT

LITTON / BURNS
TRAFFIC CALMING
NASHVILLE, TN

DRAFT
PRELIMINARY
PLANS
FOR REVIEW ONLY

NO.	REVISIONS	DATE	BY
1			
2			
3			
4			
5			
6			
7			
8			
9			
10			

DESIGNED BY: ALB
 DRAWN BY: EJW
 CHECKED BY: NDOT
 DATE: 9/27/2022
 KIMLEY-HORN PROJECT NO. 11800005

CONCEPT PLAN

SHEET NUMBER
03

This document, together with the concepts and designs presented herein, is intended only for the specific purpose and client for which it was prepared. Release of and improper reliance on the documents without written authorization and adaptation by Kimley-Horn and Associates, Inc. shall be without liability to Kimley-Horn and Associates, Inc.



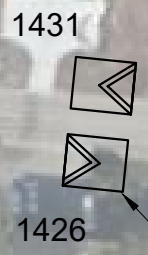
NO.	DATE	BY	REVISIONS
1			
2			
3			
4			
5			
6			
7			
8			
9			
10			

DESIGNED BY: ALB
DRAWN BY: EJW
CHECKED BY: NDOT
DATE: 9/27/2022
KIMLEY-HORN PROJECT NO. 11800005

CONCEPT PLAN

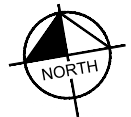
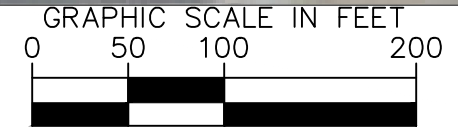
SHEET NUMBER
04

This document, together with the concepts and designs presented herein, is intended only for the specific purpose and client for which it was prepared. Release of and improper reliance on this document without written authorization and adaptation by Kimley-Horn and Associates, Inc. shall be without liability to Kimley-Horn and Associates, Inc.



SPEED CUSHION CONFIGURATION B
31' EAST OF DRIVEWAY AT
1426 LITTON AVENUE

SPEED CUSHION
CONFIGURATION B
EVEN WITH POLE #07751192
IN YARD AT 2901 LITTON AVENUE



LITTON / BURNS
TRAFFIC CALMING
NASHVILLE, TN

DRAFT
PRELIMINARY
PLANS
FOR REVIEW ONLY

NO.	DATE	BY
1		
2		
3		
4		
5		
6		
7		
8		
9		
10		

DESIGNED BY:	ALB
DRAWN BY:	EJW
CHECKED BY:	NDOT
DATE:	9/27/2022
KIMLEY-HORN PROJECT NO. 11800005	

CONCEPT PLAN
SHEET NUMBER
05

This document, together with the concepts and designs presented herein, is intended only for the specific purpose and client for which it was prepared. Release of and improper reliance on this document without written authorization and adaptation by Kimley-Horn and Associates, Inc. shall be without liability to Kimley-Horn and Associates, Inc.



NDOT

LITTON / BURNS
TRAFFIC CALMING
NASHVILLE, TN

DRAFT
PRELIMINARY
PLANS
FOR REVIEW ONLY

NO.	REVISIONS	DATE	BY
1			
2			
3			
4			
5			
6			
7			
8			
9			
10			

DESIGNED BY: ALB
DRAWN BY: EJW
CHECKED BY: NDOT
DATE: 9/27/2022
KIMLEY-HORN PROJECT NO. 11800005

CONCEPT PLAN
SHEET NUMBER
06

This document, together with the concepts and designs presented herein, is intended only for the specific purpose and client for which it was prepared. Release of and improper reliance on the documents without written authorization and adaptation by Kimley-Horn and Associates, Inc. shall be without liability to Kimley-Horn and Associates, Inc.

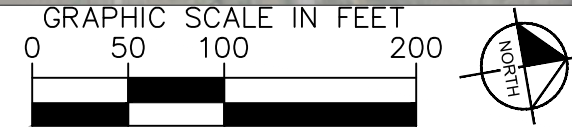


LITTON / BURNS
TRAFFIC CALMING
NASHVILLE, TN

DRAFT
PRELIMINARY
PLANS
FOR REVIEW ONLY

NO.	DATE	BY
1		
2		
3		
4		
5		
6		
7		
8		
9		
10		

DESIGNED BY:	ALB
DRAWN BY:	EJW
CHECKED BY:	NDOT
DATE:	9/27/2022
KIMLEY-HORN PROJECT NO. 11800005	
CONCEPT PLAN	
SHEET NUMBER	
07	



This document, together with the concepts and designs presented herein, is intended only for the specific purpose and client for which it was prepared. Release of and improper reliance on this document without written authorization and adaptation by Kimley-Horn and Associates, Inc. shall be without liability to Kimley-Horn and Associates, Inc.



NO.	DATE	BY
1		
2		
3		
4		
5		
6		
7		
8		
9		
10		

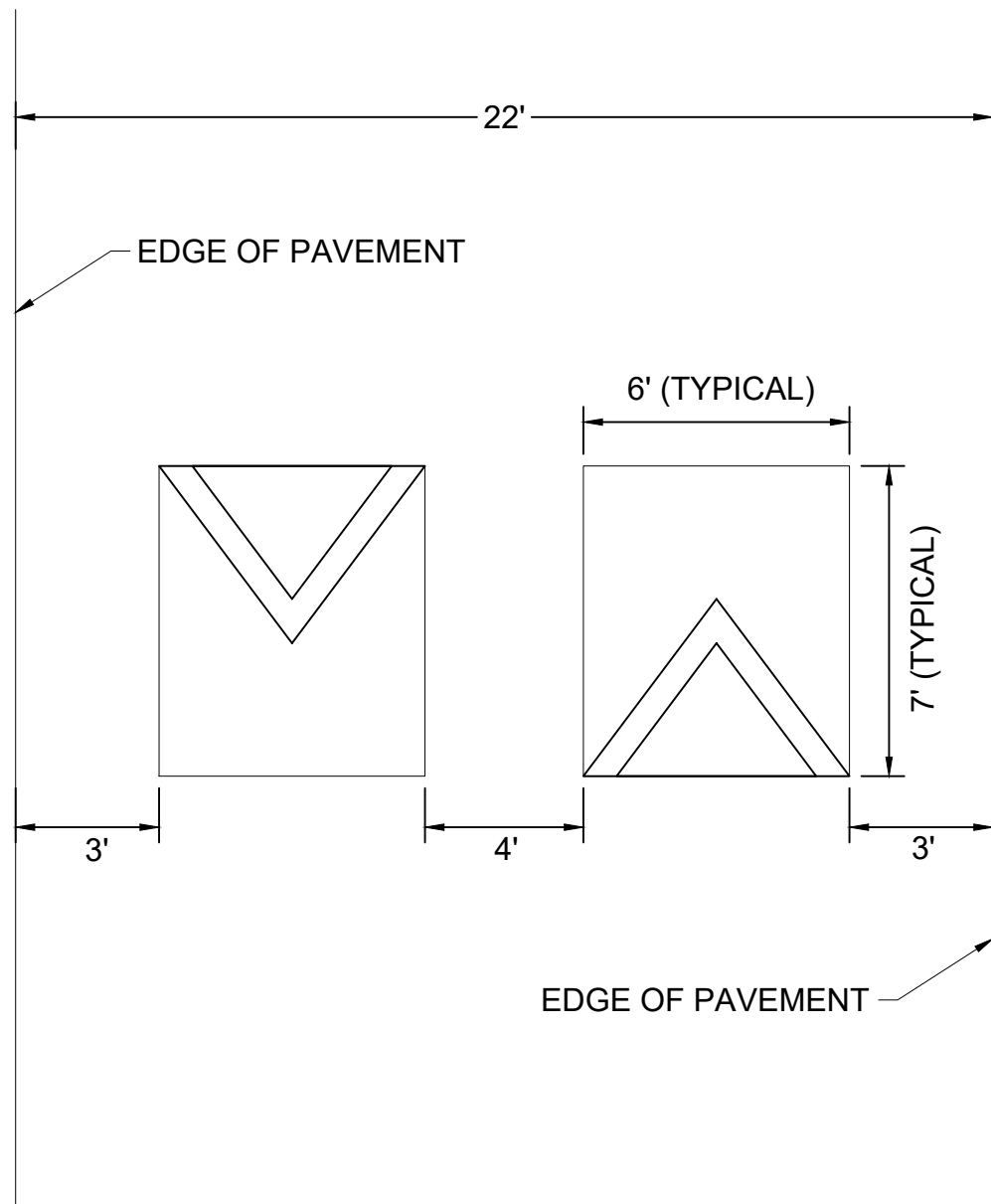
REVISIONS

DESIGNED BY:	ALP
DRAWN BY:	EJW
CHECKED BY:	NDOT
DATE:	9/27/2022
KIMLEY-HORN PROJECT NO. 11800005	

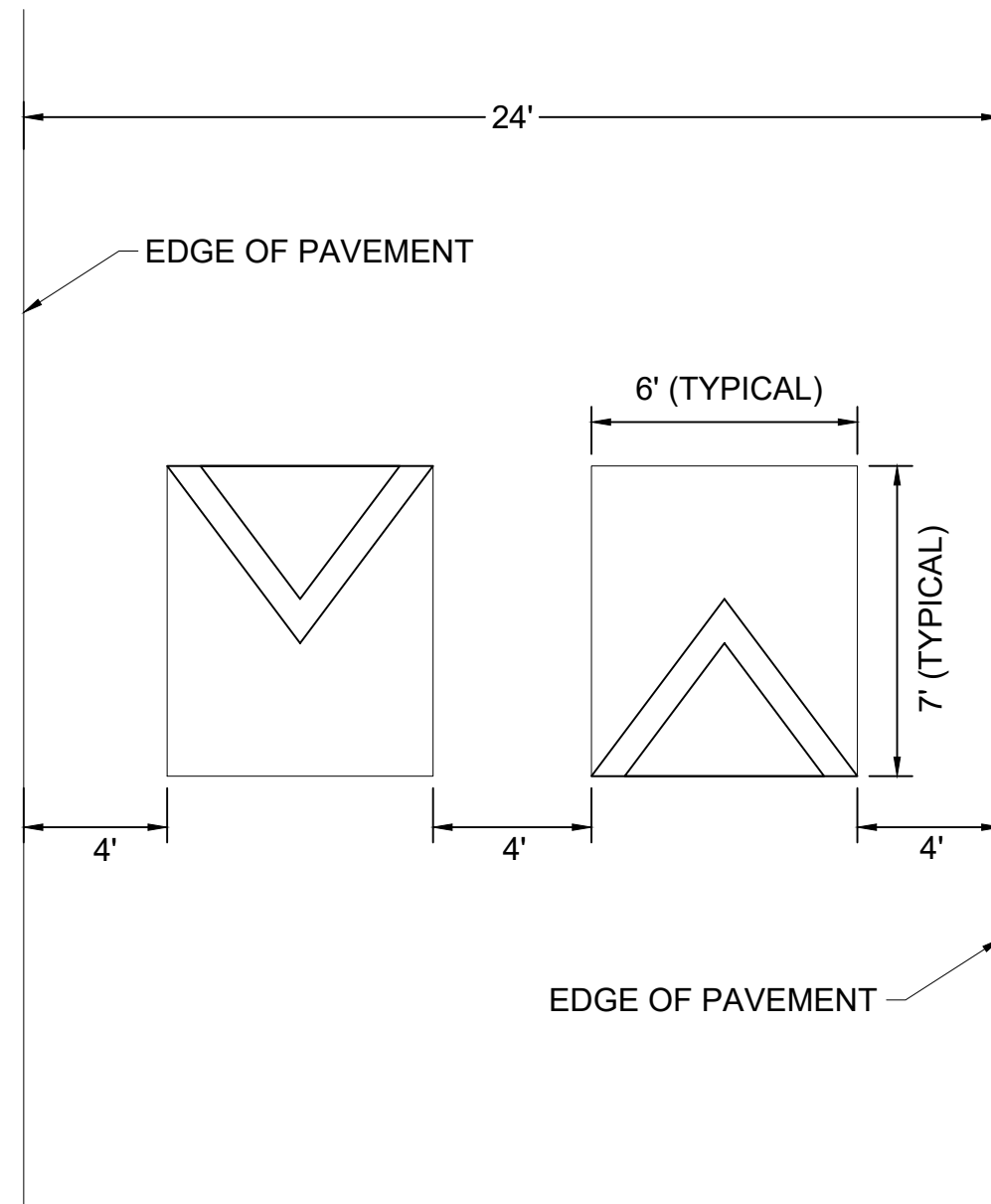


This document, together with the concepts and designs presented herein, is intended only for the specific purpose and client for which it was prepared. Reuse of and improper reliance on the documents without written authorization and adaptation by Kimley-Horn and Associates, Inc. shall be without liability to Kimley-Horn and Associates, Inc.

SPEED CUSHION CONFIGURATION A



SPEED CUSHION CONFIGURATION B



LITTON / BURNS
TRAFFIC CALMING
NASHVILLE, TN

DRAFT
PRELIMINARY
PLANS
FOR REVIEW ONLY

NO.	REVISIONS	DATE	BY
1			
2			
3			
4			
5			
6			
7			
8			
9			
10			

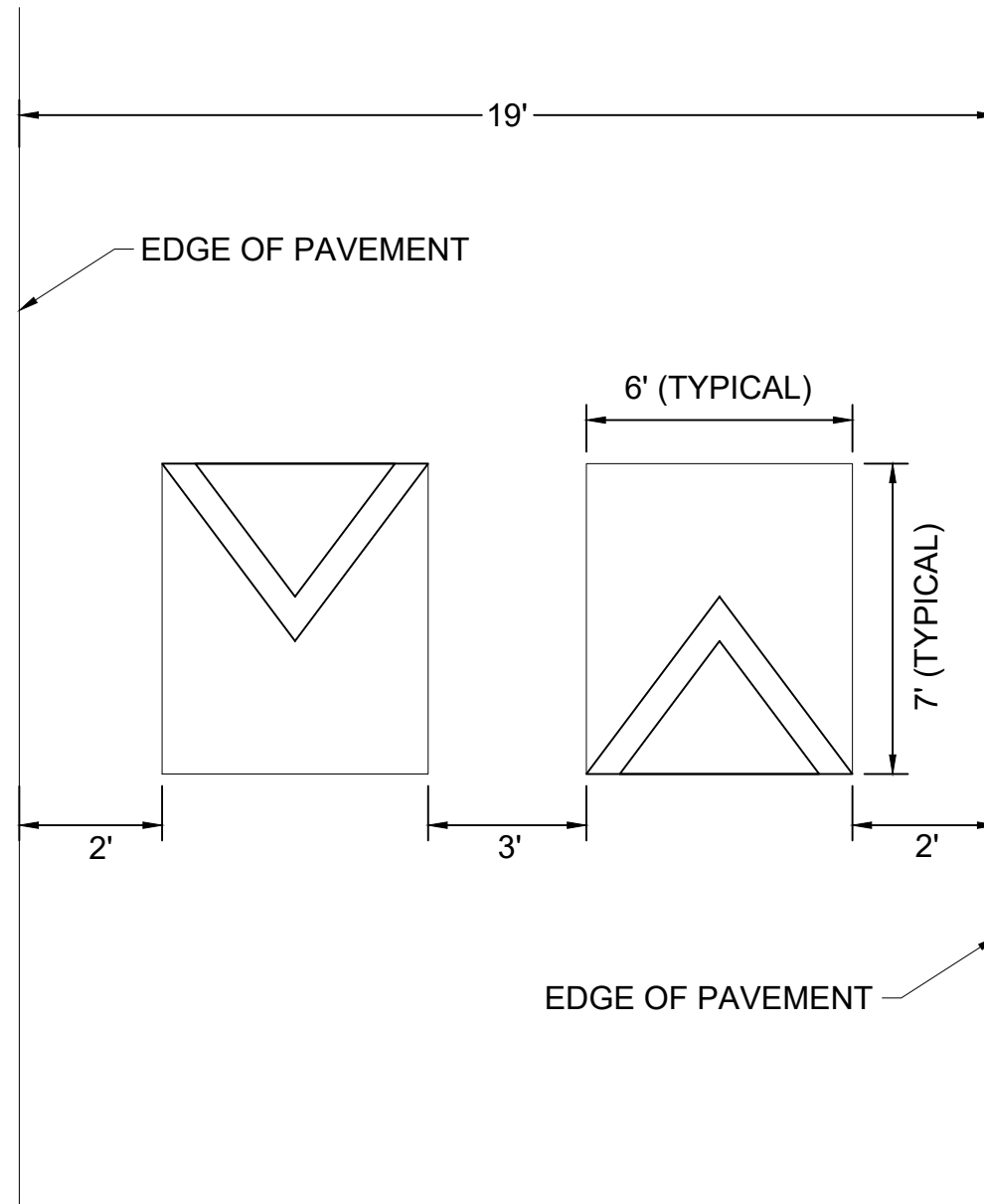
DESIGNED BY: ALB
DRAWN BY: EJW
CHECKED BY: NDOT
DATE: 9/27/2022
KIMLEY-HORN PROJECT NO. 118000005

DETAIL

SHEET NUMBER
09

This document, together with the concepts and designs presented herein, is intended only for the specific purpose and client for which it was prepared. Release of and improper reliance on the documents without written authorization and adaptation by Kimley-Horn and Associates, Inc. shall be without liability to Kimley-Horn and Associates, Inc.

SPEED CUSHION CONFIGURATION C



LITTON / BURNS
TRAFFIC CALMING
NASHVILLE, TN

**DRAFT
PRELIMINARY
PLANS**
FOR REVIEW ONLY

NO.	REVISIONS	DATE	BY
1			
2			
3			
4			
5			
6			
7			
8			
9			
10			

DESIGNED BY: ALB
 DRAWN BY: EJW
 CHECKED BY: NDOT
 DATE: 9/27/2022
 KIMLEY-HORN PROJECT NO. 118000005

DETAIL

SHEET NUMBER
10