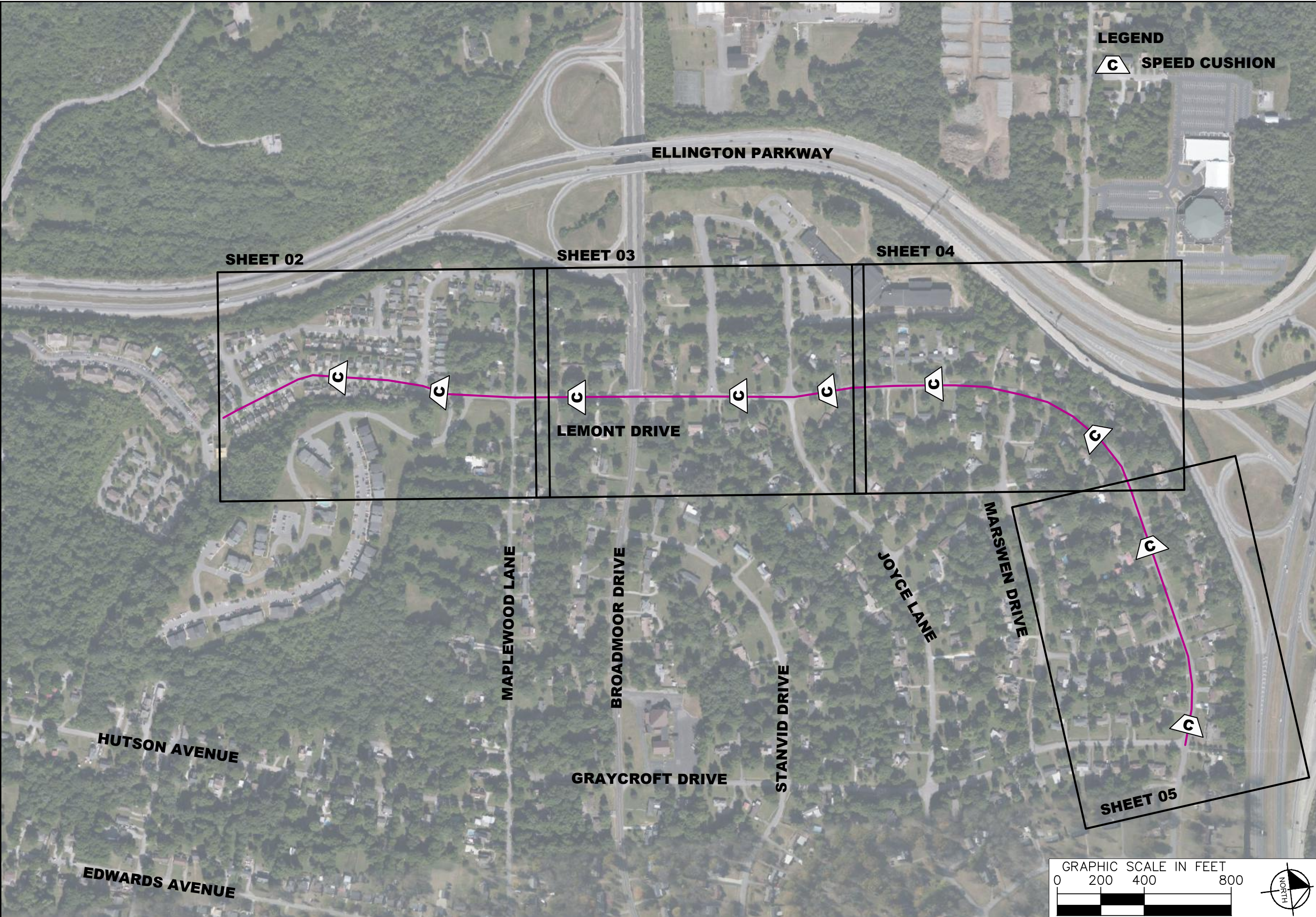


This document, together with the concepts and designs presented herein, is intended only for the specific purpose and client for which it was prepared. Reuse of and improper reliance on this document without written authorization and adaptation by Kimley-Horn and Associates, Inc. shall be without liability to Kimley-Horn and Associates, Inc.



**LEGEND**

**C** SPEED CUSHION



**LEMONT DRIVE  
TRAFFIC CALMING**  
NASHVILLE, TN

**DRAFT  
PRELIMINARY  
PLANS**  
FOR REVIEW ONLY

| NO. | REVISIONS | DATE | BY |
|-----|-----------|------|----|
| 1   |           |      |    |
| 2   |           |      |    |
| 3   |           |      |    |
| 4   |           |      |    |
| 5   |           |      |    |
| 6   |           |      |    |
| 7   |           |      |    |
| 8   |           |      |    |
| 9   |           |      |    |
| 10  |           |      |    |

|                                   |            |
|-----------------------------------|------------|
| DESIGNED BY:                      | ALB        |
| DRAWN BY:                         | DEF        |
| CHECKED BY:                       | NDOT       |
| DATE:                             | 09/27/2022 |
| KIMLEY-HORN PROJECT NO. 118800030 |            |

|              |
|--------------|
| KEY          |
| SHEET NUMBER |
| <b>01</b>    |

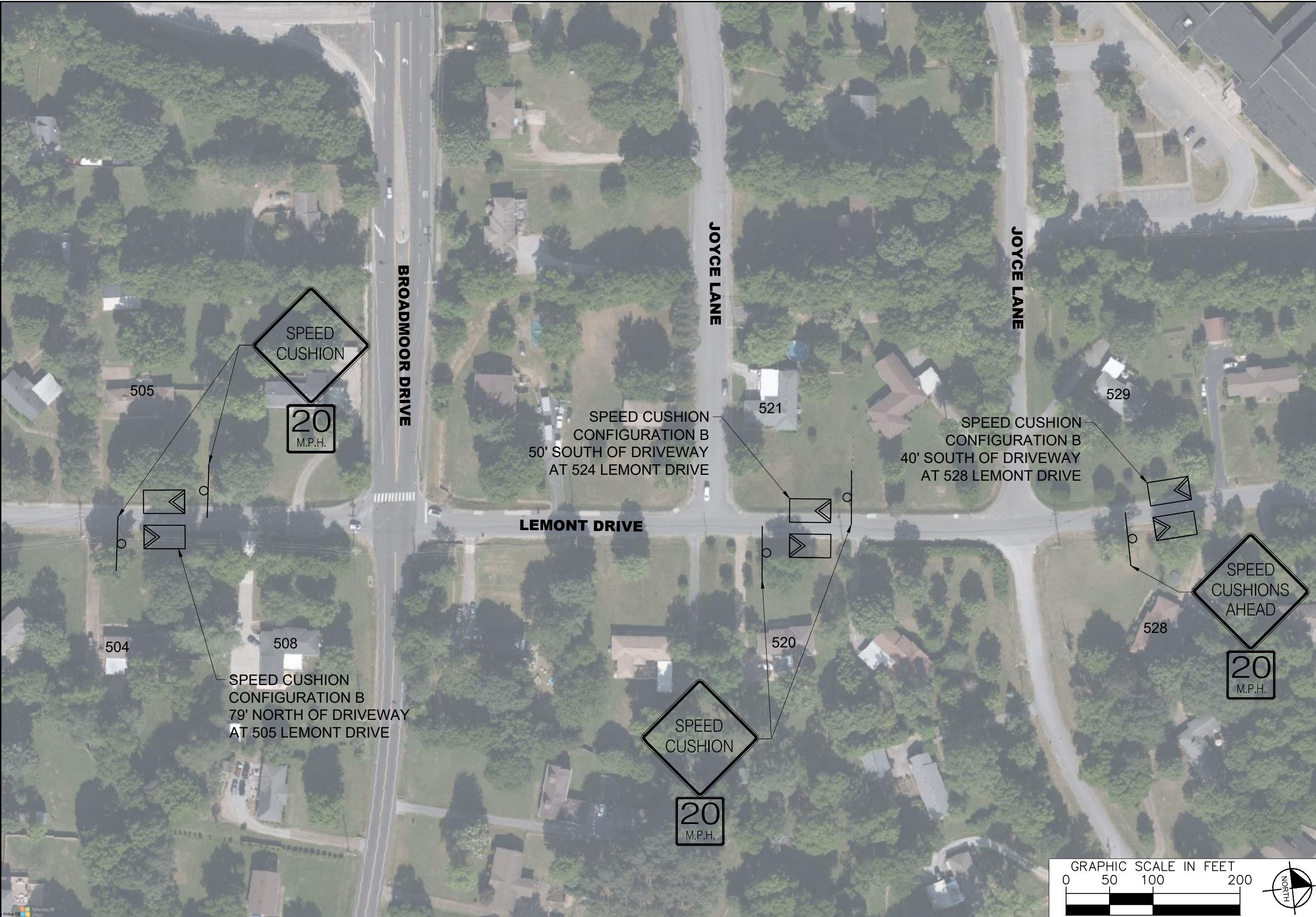
This document, together with the concepts and designs presented herein, is intended only for the specific purpose and client for which it was prepared. Reuse of and improper reliance on this document without written authorization and adaptation by Kimley-Horn and Associates, Inc. shall be without liability to Kimley-Horn and Associates, Inc.



| NO. | DATE | BY |
|-----|------|----|
| 1   |      |    |
| 2   |      |    |
| 3   |      |    |
| 4   |      |    |
| 5   |      |    |
| 6   |      |    |
| 7   |      |    |
| 8   |      |    |
| 9   |      |    |
| 10  |      |    |

|                                   |            |
|-----------------------------------|------------|
| DESIGNED BY:                      | ALB        |
| DRAWN BY:                         | DEF        |
| CHECKED BY:                       | NDOT       |
| DATE:                             | 09/27/2022 |
| KIMLEY-HORN PROJECT NO. 118800030 |            |

This document, together with the concepts and designs presented herein, is intended only for the specific purpose and client for which it was prepared. Reuse of and improper reliance on this document without written authorization and adaptation by Kimley-Horn and Associates, Inc. shall be without liability to Kimley-Horn and Associates, Inc.



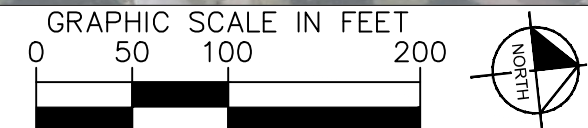
**LEMONT DRIVE  
TRAFFIC CALMING**  
NASHVILLE, TN

**DRAFT  
PRELIMINARY  
PLANS**  
FOR REVIEW ONLY

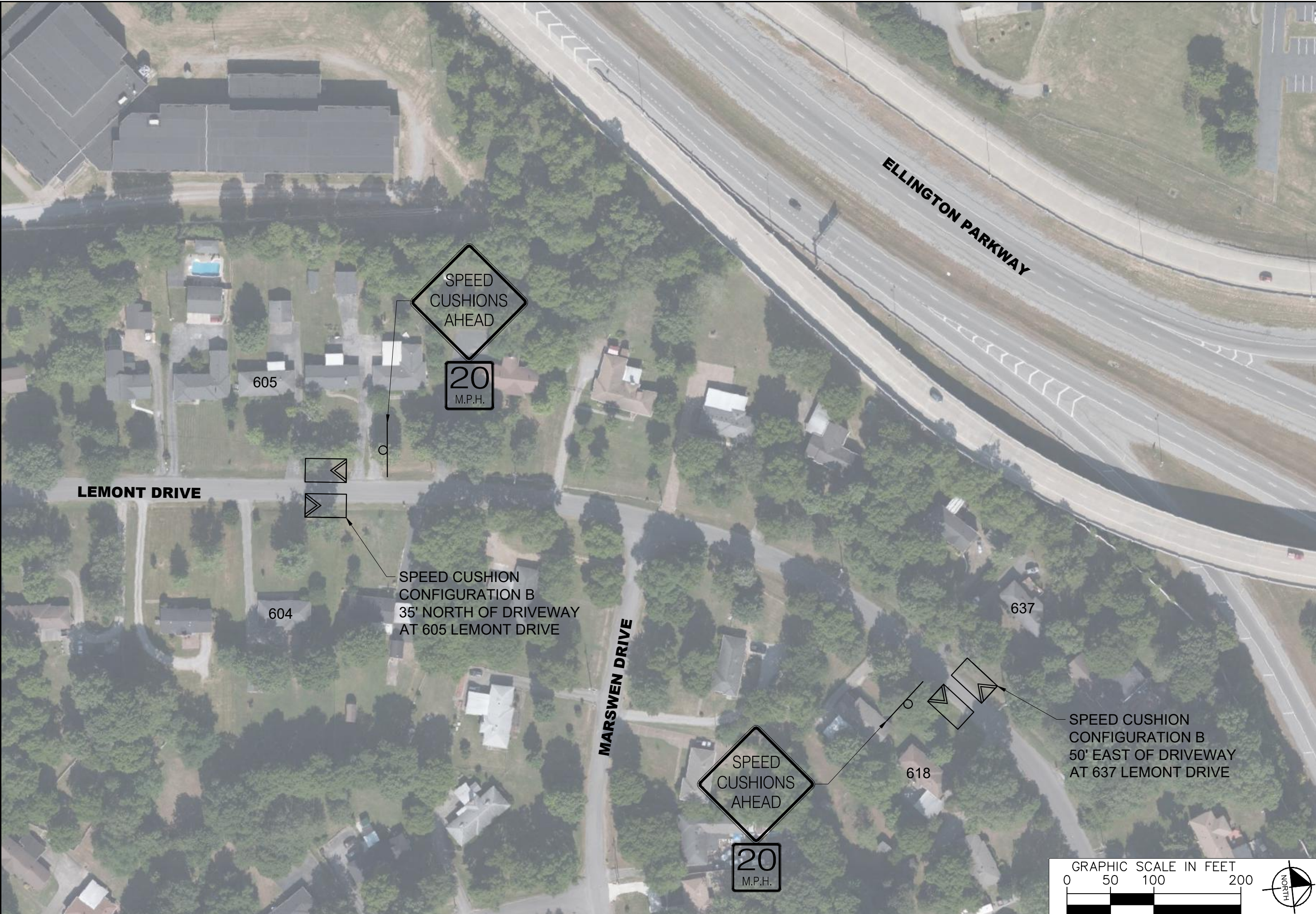
| NO. | REVISIONS | DATE | BY |
|-----|-----------|------|----|
| 1   |           |      |    |
| 2   |           |      |    |
| 3   |           |      |    |
| 4   |           |      |    |
| 5   |           |      |    |
| 6   |           |      |    |
| 7   |           |      |    |
| 8   |           |      |    |
| 9   |           |      |    |
| 10  |           |      |    |

DESIGNED BY: ALB  
 DRAWN BY: DEF  
 CHECKED BY: NDOT  
 DATE: 09/27/2022  
 KIMLEY-HORN PROJECT NO. 118800030

CONCEPT PLAN  
 SHEET NUMBER  
**03**

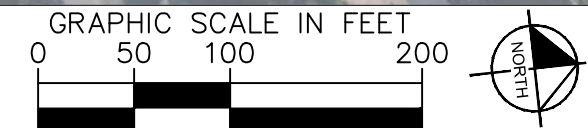


This document, together with the concepts and designs presented herein, is intended only for the specific purpose and client for which it was prepared. Reuse of and improper reliance on this document without written authorization and adaptation by Kimley-Horn and Associates, Inc. shall be without liability to Kimley-Horn and Associates, Inc.



| NO. | DATE | BY | REVISIONS |
|-----|------|----|-----------|
| 1   |      |    |           |
| 2   |      |    |           |
| 3   |      |    |           |
| 4   |      |    |           |
| 5   |      |    |           |
| 6   |      |    |           |
| 7   |      |    |           |
| 8   |      |    |           |
| 9   |      |    |           |
| 10  |      |    |           |

DESIGNED BY: ALB  
DRAWN BY: DEF  
CHECKED BY: NDOT  
DATE: 09/27/2022  
KIMLEY-HORN PROJECT NO. 118800030



This document, together with the concepts and designs presented herein, is intended only for the specific purpose and client for which it was prepared. Reuse of and improper reliance on this document without written authorization and adaptation by Kimley-Horn and Associates, Inc. shall be without liability to Kimley-Horn and Associates, Inc.

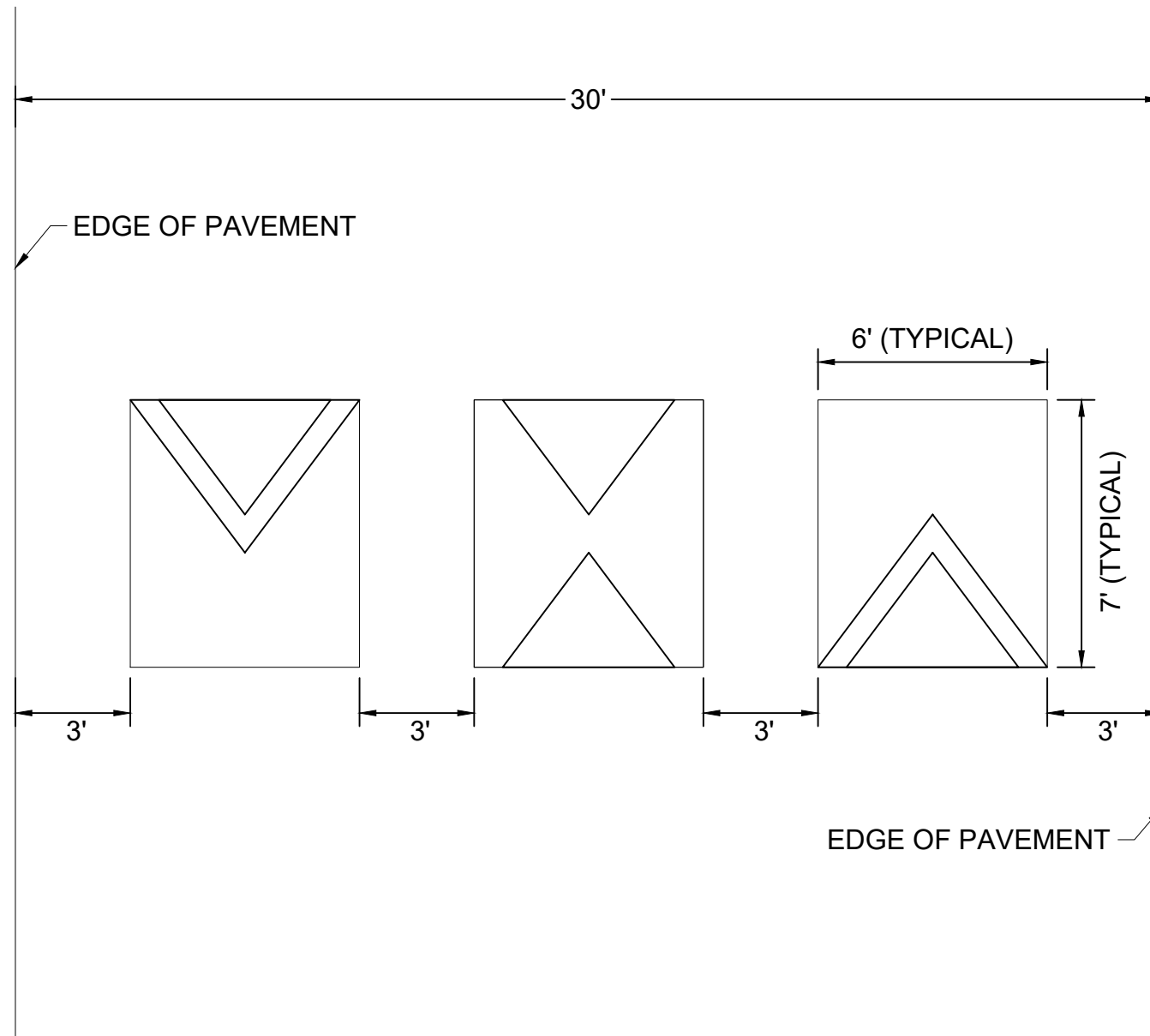


| NO. | REVISIONS | DATE | BY |
|-----|-----------|------|----|
| 1   |           |      |    |
| 2   |           |      |    |
| 3   |           |      |    |
| 4   |           |      |    |
| 5   |           |      |    |
| 6   |           |      |    |
| 7   |           |      |    |
| 8   |           |      |    |
| 9   |           |      |    |
| 10  |           |      |    |

DESIGNED BY: ALB  
 DRAWN BY: DEF  
 CHECKED BY: NDOT  
 DATE: 09/27/2022  
 KIMLEY-HORN PROJECT NO. 118800030

This document, together with the concepts and designs presented herein, as an instrument of service, is intended only for the specific purpose and client for which it was prepared. Reuse of and improper reliance on this document without written authorization and adaptation by Kimley-Horn and Associates, Inc. shall be without liability to Kimley-Horn and Associates, Inc.

### SPEED CUSHION CONFIGURATION A



**LEMONT DRIVE  
TRAFFIC CALMING**  
NASHVILLE, TN

**DRAFT  
PRELIMINARY  
PLANS**  
FOR REVIEW ONLY

| NO. | REVISIONS | DATE | BY |
|-----|-----------|------|----|
| 1   |           |      |    |
| 2   |           |      |    |
| 3   |           |      |    |
| 4   |           |      |    |
| 5   |           |      |    |
| 6   |           |      |    |
| 7   |           |      |    |
| 8   |           |      |    |
| 9   |           |      |    |
| 10  |           |      |    |

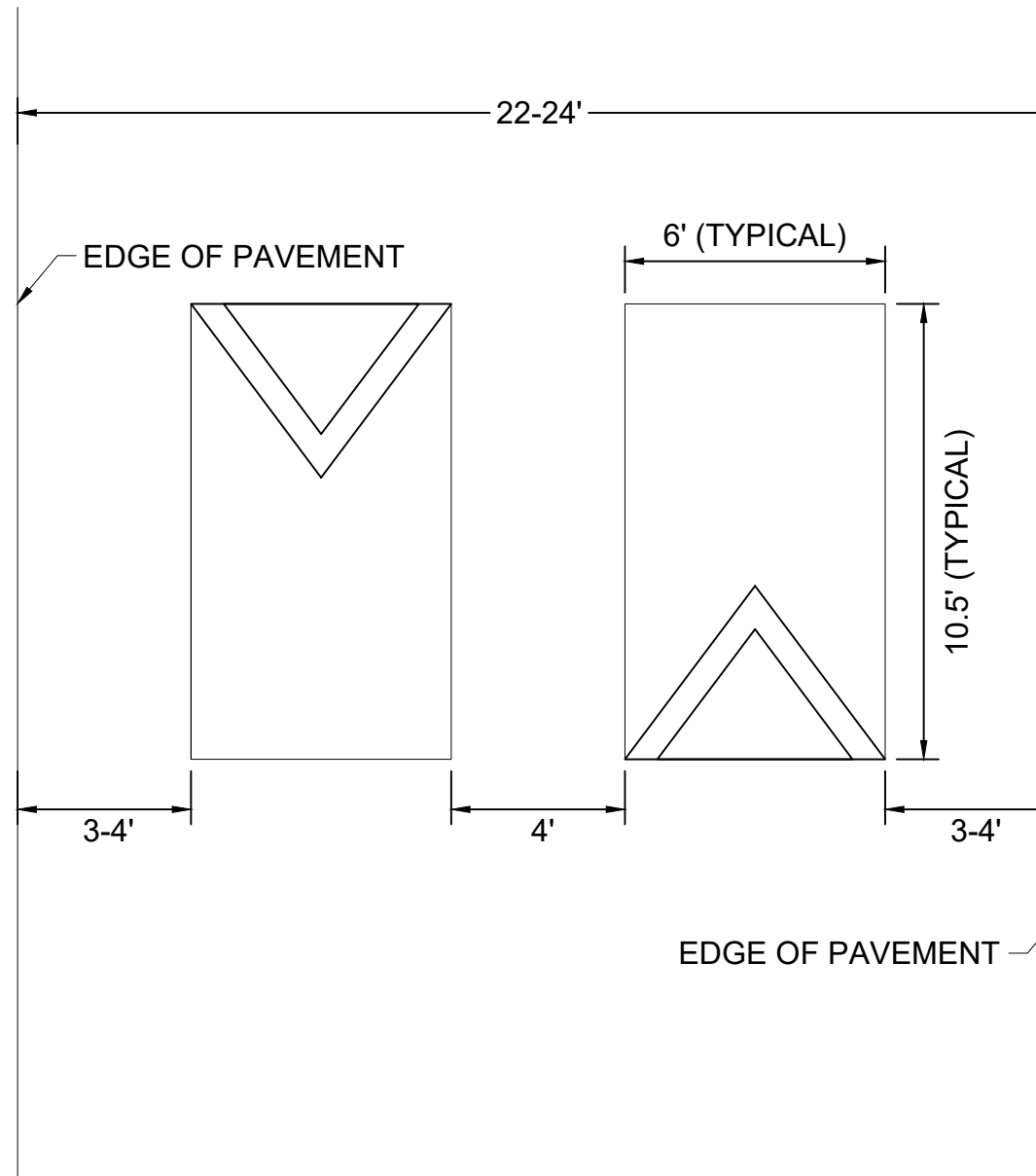
DESIGNED BY: ALB  
 DRAWN BY: DEF  
 CHECKED BY: NDOT  
 DATE: 09/27/2022  
 KIMLEY-HORN PROJECT NO. 118800030

DETAIL

SHEET NUMBER  
**06**

This document, together with the concepts and designs presented herein, is intended only for the specific purpose and client for which it was prepared. Reuse of and improper reliance on this document without written authorization and adaptation by Kimley-Horn and Associates, Inc. shall be without liability to Kimley-Horn and Associates, Inc.

### SPEED CUSHION CONFIGURATION B



**LEMONT DRIVE  
TRAFFIC CALMING**  
NASHVILLE, TN

**DRAFT  
PRELIMINARY  
PLANS**  
FOR REVIEW ONLY

| NO. | REVISIONS | DATE | BY |
|-----|-----------|------|----|
| 1   |           |      |    |
| 2   |           |      |    |
| 3   |           |      |    |
| 4   |           |      |    |
| 5   |           |      |    |
| 6   |           |      |    |
| 7   |           |      |    |
| 8   |           |      |    |
| 9   |           |      |    |
| 10  |           |      |    |

DESIGNED BY: ALB  
 DRAWN BY: DEF  
 CHECKED BY: NDOT  
 DATE: 09/27/2022  
 KIMLEY-HORN PROJECT NO. 118800030

DETAIL

SHEET NUMBER  
**07**