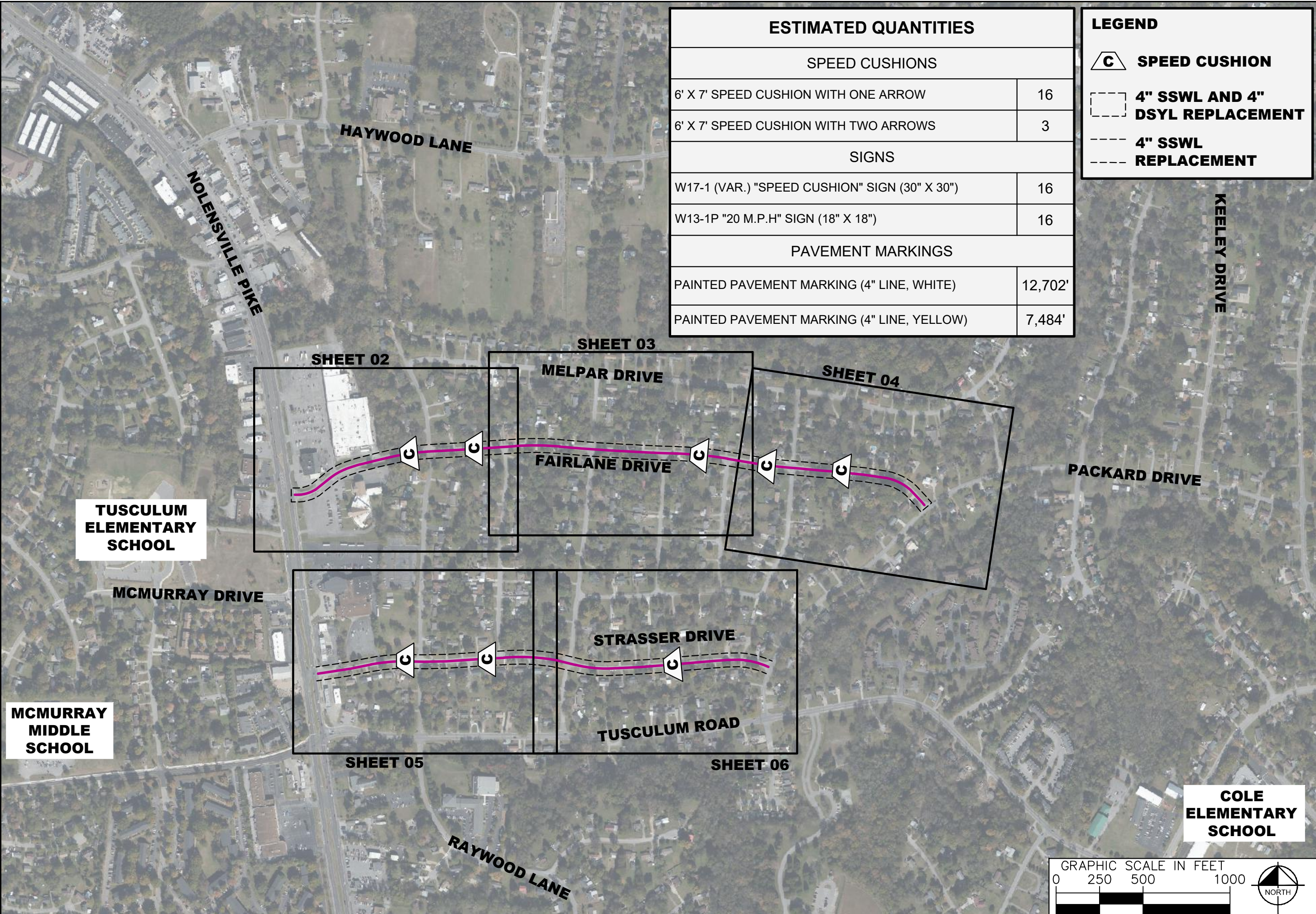


This document, together with the concepts and designs presented herein, is intended only for the specific purpose and client for which it was prepared. Reuse of and improper reliance on this document without written authorization and adaptation by Kimley-Horn and Associates, Inc. shall be without liability to Kimley-Horn and Associates, Inc.



ESTIMATED QUANTITIES	
SPEED CUSHIONS	
6' X 7' SPEED CUSHION WITH ONE ARROW	16
6' X 7' SPEED CUSHION WITH TWO ARROWS	3
SIGNS	
W17-1 (VAR.) "SPEED CUSHION" SIGN (30" X 30")	16
W13-1P "20 M.P.H" SIGN (18" X 18")	16
PAVEMENT MARKINGS	
PAINTED PAVEMENT MARKING (4" LINE, WHITE)	12,702'
PAINTED PAVEMENT MARKING (4" LINE, YELLOW)	7,484'

LEGEND	
	<b>SPEED CUSHION</b>
	<b>4" SSWL AND 4" DSYL REPLACEMENT</b>
	<b>4" SSWL REPLACEMENT</b>

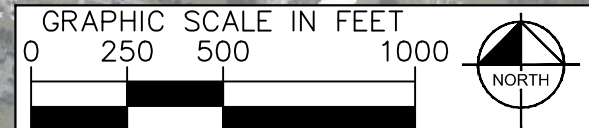


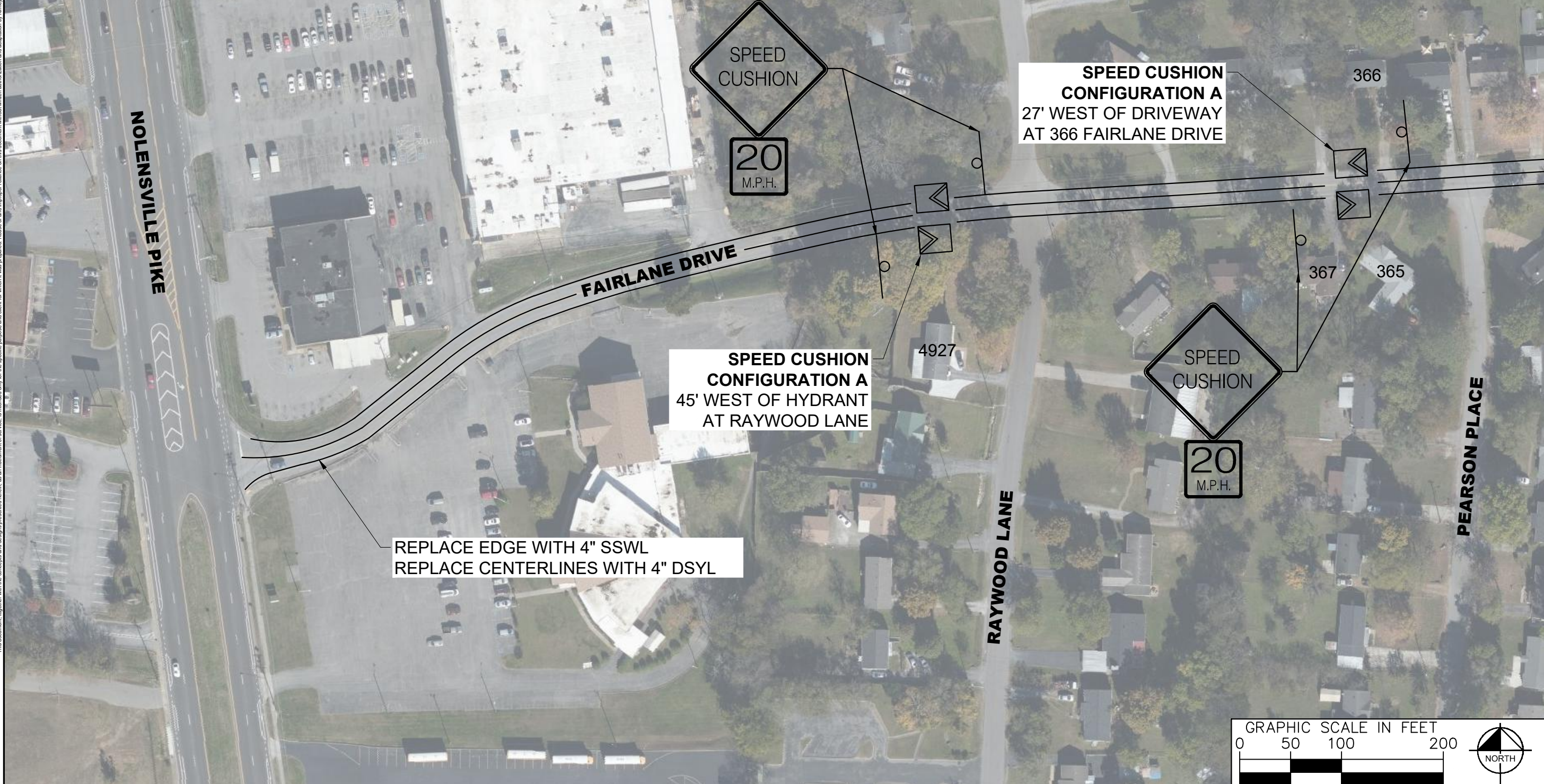
**FAIRLANE PARK TRAFFIC CALMING**  
 NASHVILLE, TN



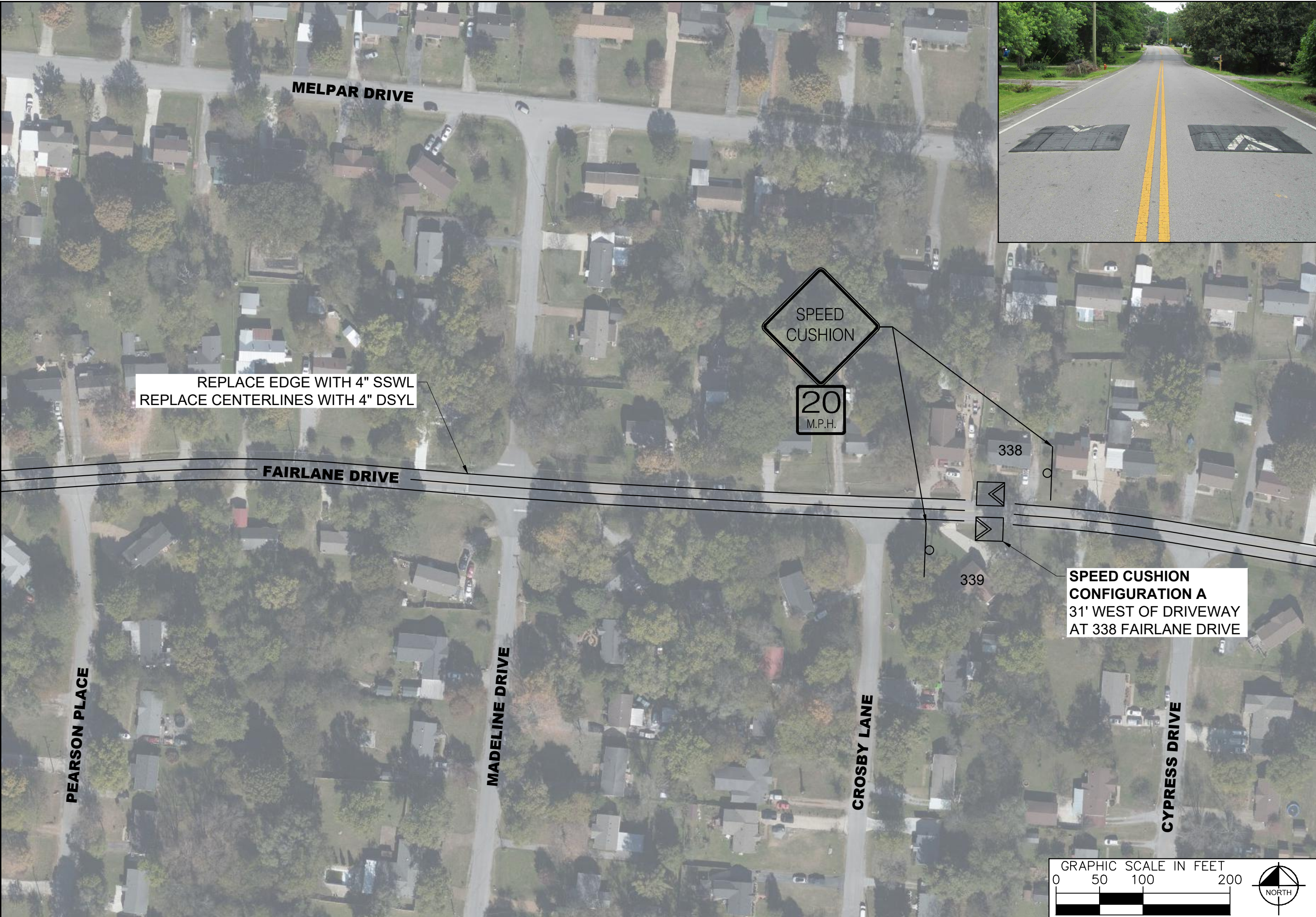
DESIGNED BY:	ALB
DRAWN BY:	AIM
CHECKED BY:	NDOT
DATE:	11/14/2022
KIMLEY-HORN PROJECT NO.:	118800030

KEY
SHEET NUMBER
<b>01</b>





This document, together with the concepts and designs presented herein, is intended only for the specific purpose and client for which it was prepared. Reuse of and improper reliance on this document without written authorization and adaptation by Kimley-Horn and Associates, Inc. shall be without liability to Kimley-Horn and Associates, Inc.



**NDOT**

**FAIRLANE PARK TRAFFIC CALMING**  
NASHVILLE, TN

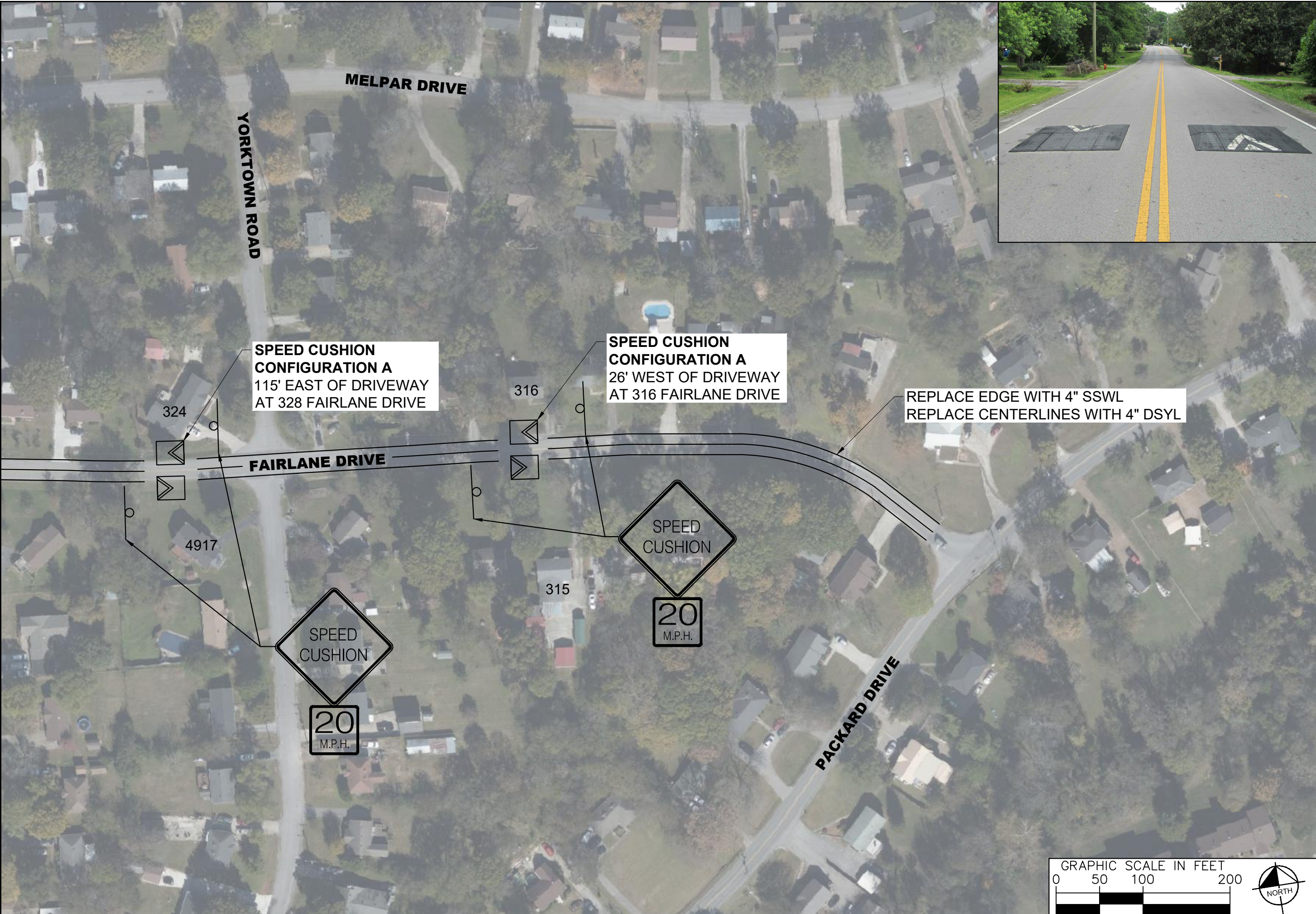


DESIGNED BY:	ALB
DRAWN BY:	AIM
CHECKED BY:	NDOT
DATE:	11/14/2022
KIMLEY-HORN PROJECT NO.:	118800030

CONCEPT PLAN

SHEET NUMBER  
**03**

This document, together with the concepts and designs presented herein, is intended only for the specific purpose and client for which it was prepared. Reuse and improper reliance on this document without written authorization and adaptation by Kimley-Horn and Associates, Inc. shall be without liability to Kimley-Horn and Associates, Inc.



**NDOT**

**FAIRLANE PARK TRAFFIC CALMING**  
NASHVILLE, TN

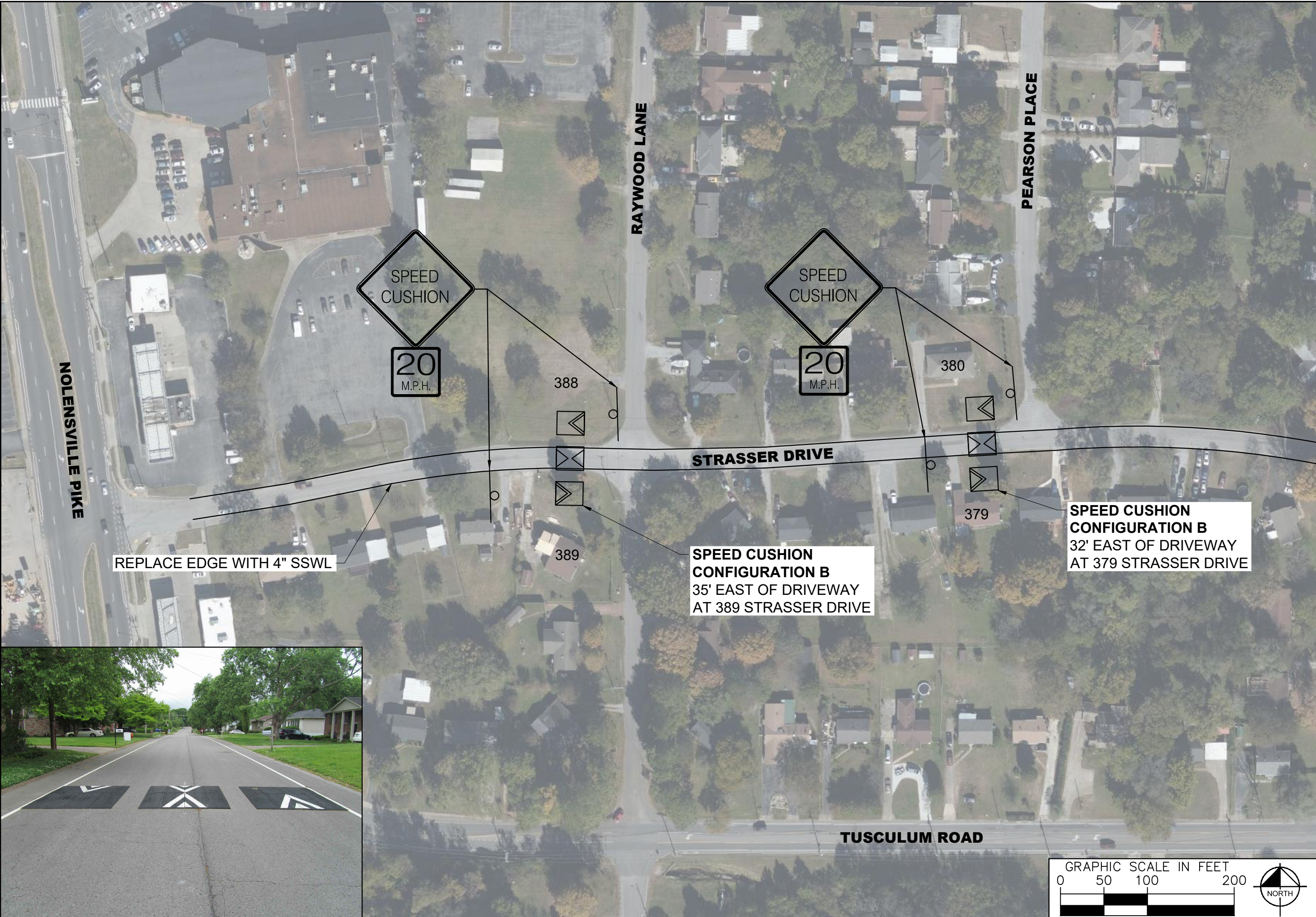


DESIGNED BY: ALB  
DRAWN BY: AIM  
CHECKED BY: NDOT  
DATE: 11/14/2022  
KIMLEY-HORN PROJECT NO. 11880030

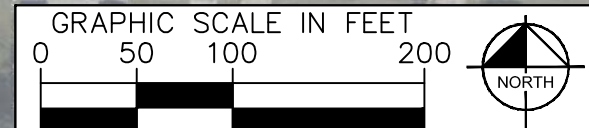
CONCEPT PLAN  
SHEET NUMBER  
**04**



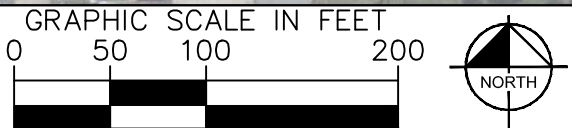
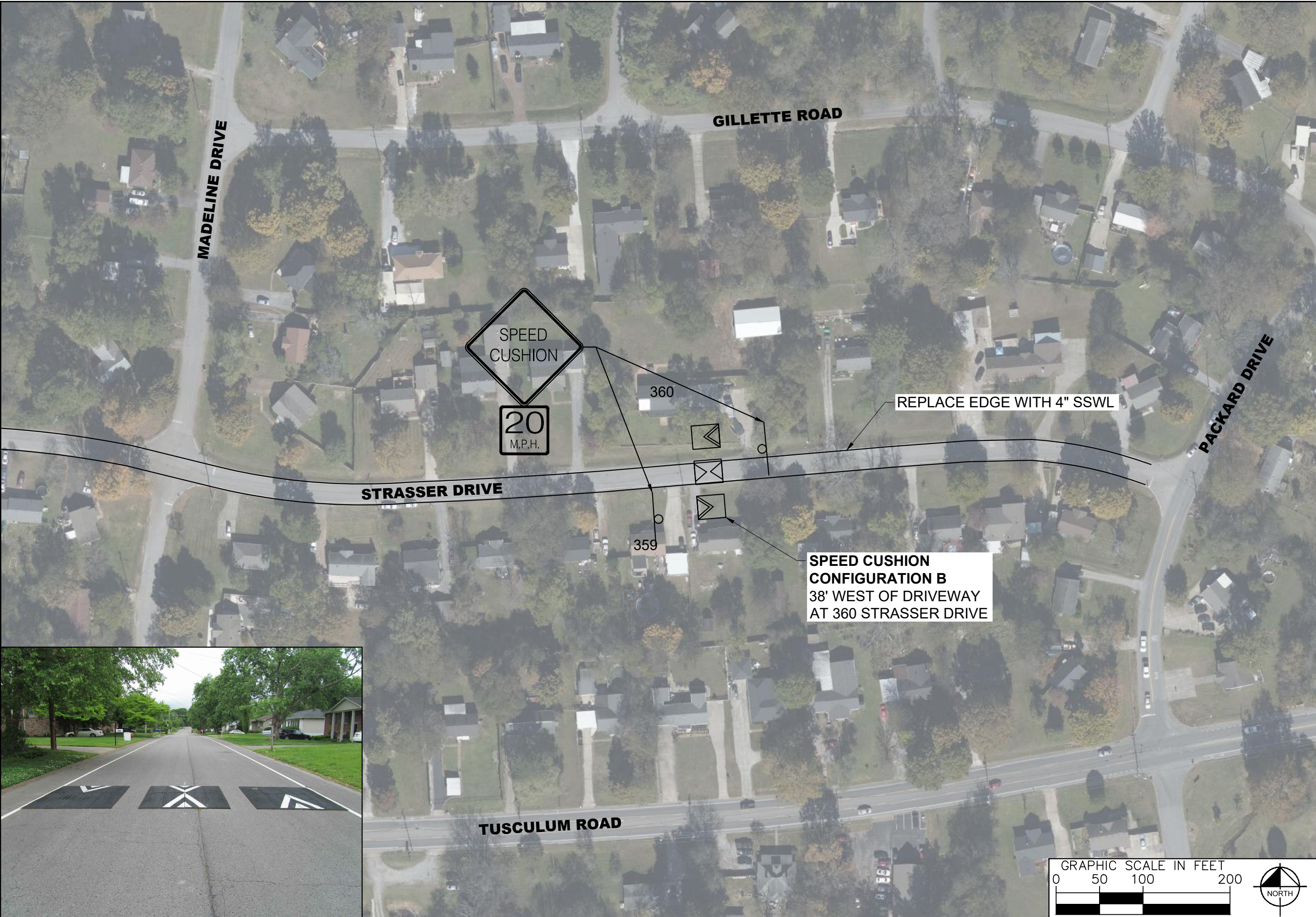
This document, together with the concepts and designs presented herein, is intended only for the specific purpose and client for which it was prepared. Reuse of and improper reliance on this document without written authorization and adaptation by Kimley-Horn and Associates, Inc. shall be without liability to Kimley-Horn and Associates, Inc.



DESIGNED BY:	ALB
DRAWN BY:	AIM
CHECKED BY:	NDOT
DATE:	11/14/2022
KIMLEY-HORN PROJECT NO. 118800030	

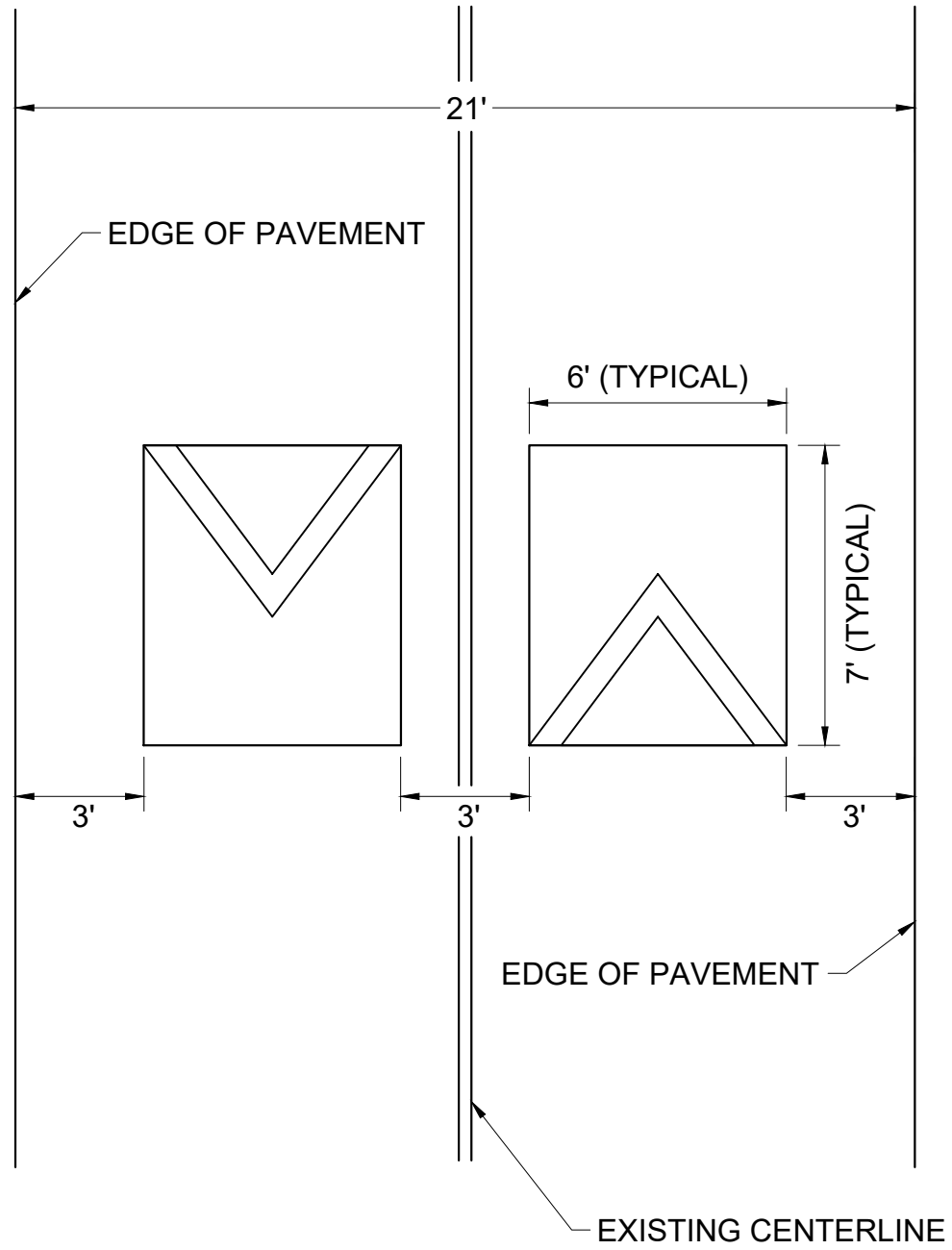


This document, together with the concepts and designs presented herein, is intended only for the specific purpose and client for which it was prepared. Reuse of this document without written authorization and adaptation by Kimley-Horn and Associates, Inc. shall be without liability to Kimley-Horn and Associates, Inc.



This document, together with the concepts and designs presented herein, as an instrument of service, is intended only for the specific purpose and client for which it was prepared. Reuse of and improper reliance on this document without written authorization and adaptation by Kimley-Horn and Associates, Inc. shall be without liability to Kimley-Horn and Associates, Inc.

### SPEED CUSHION CONFIGURATION A



### SPEED CUSHION CONFIGURATION B

