

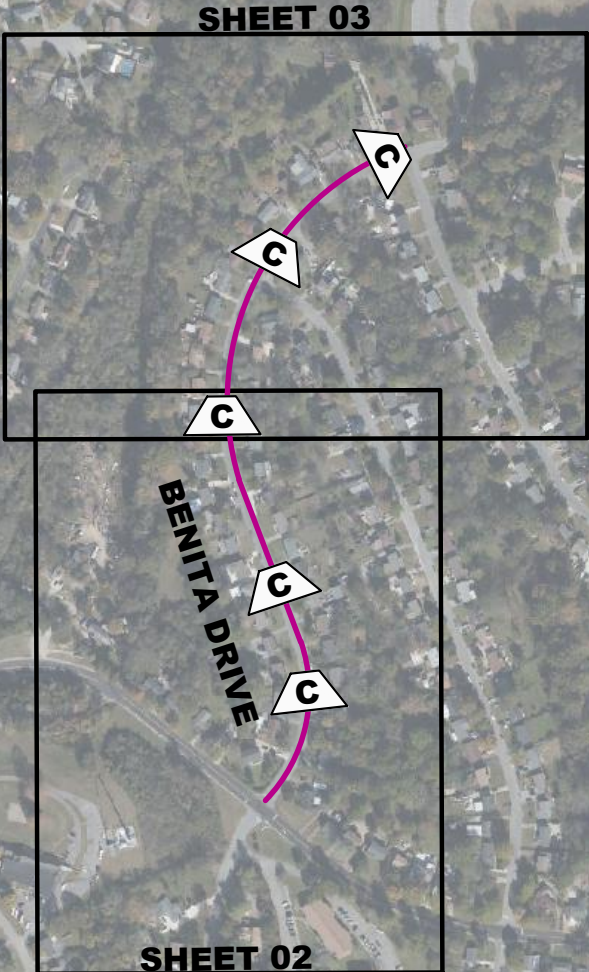
This document, together with the concepts and designs presented herein, is intended only for the specific purpose and client for which it was prepared. Reuse of and improper reliance on this document without written authorization and adaptation by Kimley-Horn and Associates, Inc. shall be without liability to Kimley-Horn and Associates, Inc.

**LEGEND**



**SPEED CUSHION**

ESTIMATED QUANTITIES	
SPEED CUSHIONS	
6' X 7' SPEED CUSHION WITH ONE ARROW	10
6' X 7' SPEED CUSHION WITH TWO ARROWS	5
SIGNS	
W17-1 (VAR.) "SPEED CUSHIONS AHEAD" SIGN (30" X 30")	4
W13-1P "20 M.P.H" SIGN (18" X 18")	4



**SHEET 03**

**SHEET 02**

**JONQUIL DRIVE**

**BENITA DRIVE**

**DONNA KAY DRIVE**

**EKHART DRIVE**

**SCOTWOOD DRIVE**

**REISCHA DRIVE**

**INTERSTATE 24**

**PARAGON MILLS  
ELEMENTARY  
SCHOOL**


**PARAGON MILLS ROAD**

**EISENHOWER DRIVE**

**HARDING PLACE**

GRAPHIC SCALE IN FEET

0 250 500 1000



**NORTH**



**PARAGON MILLS  
TRAFFIC CALMING**  
NASHVILLE, TN

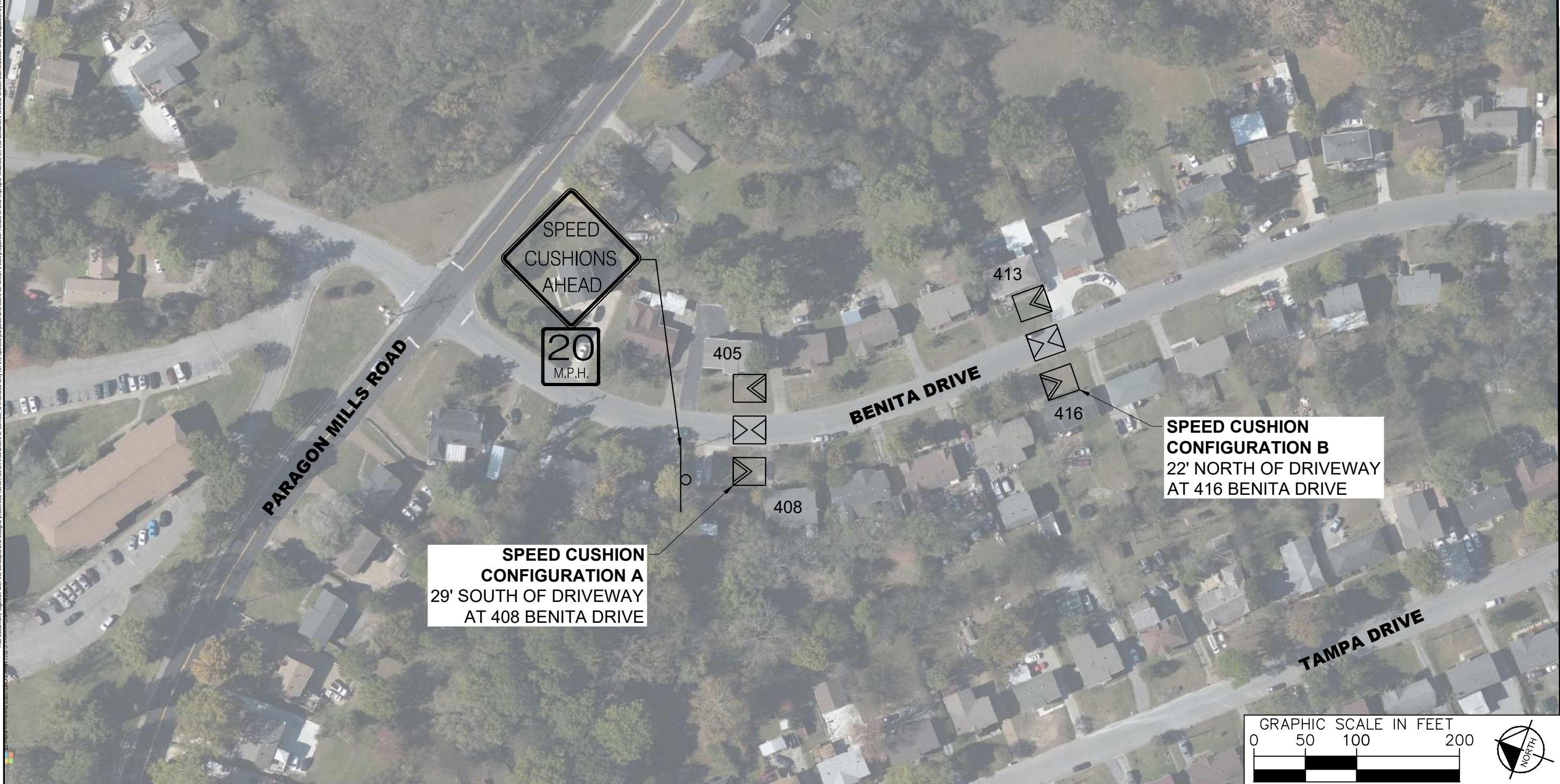


DESIGNED BY:	JH
DRAWN BY:	EMT
CHECKED BY:	NDOT
DATE:	11/8/2022
KIMLEY-HORN PROJECT NO.:	118900030

BENITA DRIVE  
KEY

SHEET NUMBER  
**01**





SPEED  
CUSHIONS  
AHEAD

20  
M.P.H.

PARAGON MILLS ROAD

BENITA DRIVE

TAMPA DRIVE

**SPEED CUSHION  
CONFIGURATION A**  
29' SOUTH OF DRIVEWAY  
AT 408 BENITA DRIVE

**SPEED CUSHION  
CONFIGURATION B**  
22' NORTH OF DRIVEWAY  
AT 416 BENITA DRIVE

405

408

413

416

GRAPHIC SCALE IN FEET  
0 50 100 200



**NDOT**

PARAGON MILLS  
TRAFFIC CALMING  
NASHVILLE, TN

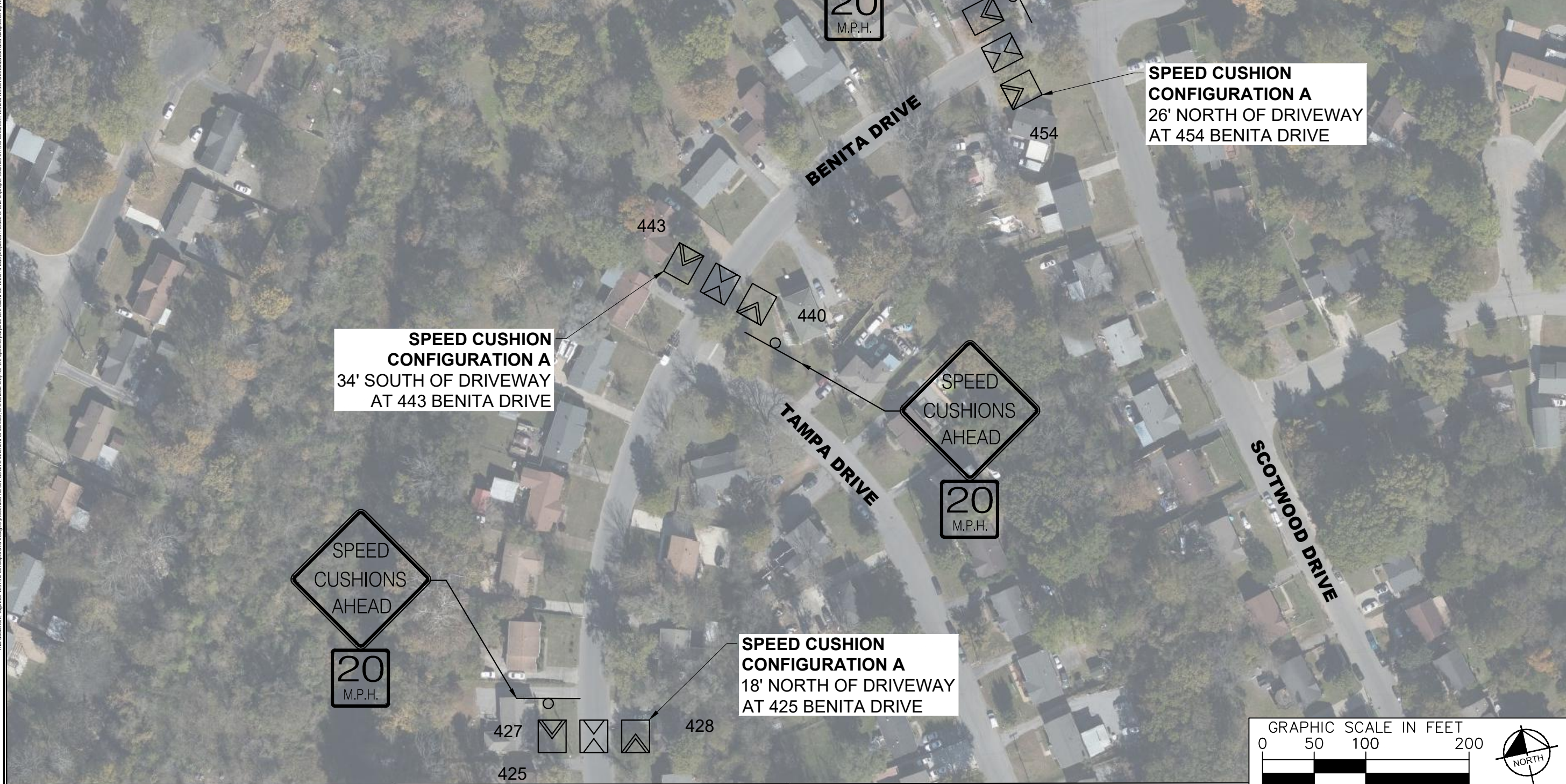


DESIGNED BY: JH  
DRAWN BY: EMT  
CHECKED BY: NDOT  
DATE: 11/8/2022  
KIMLEY-HORN PROJECT NO. 118800030

BENITA DRIVE  
CONCEPT

SHEET NUMBER  
**02**

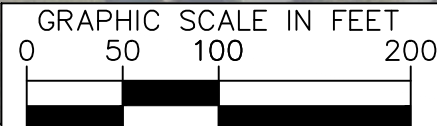




**SPEED CUSHION CONFIGURATION A**  
34' SOUTH OF DRIVEWAY  
AT 443 BENITA DRIVE

**SPEED CUSHION CONFIGURATION A**  
26' NORTH OF DRIVEWAY  
AT 454 BENITA DRIVE

**SPEED CUSHION CONFIGURATION A**  
18' NORTH OF DRIVEWAY  
AT 425 BENITA DRIVE

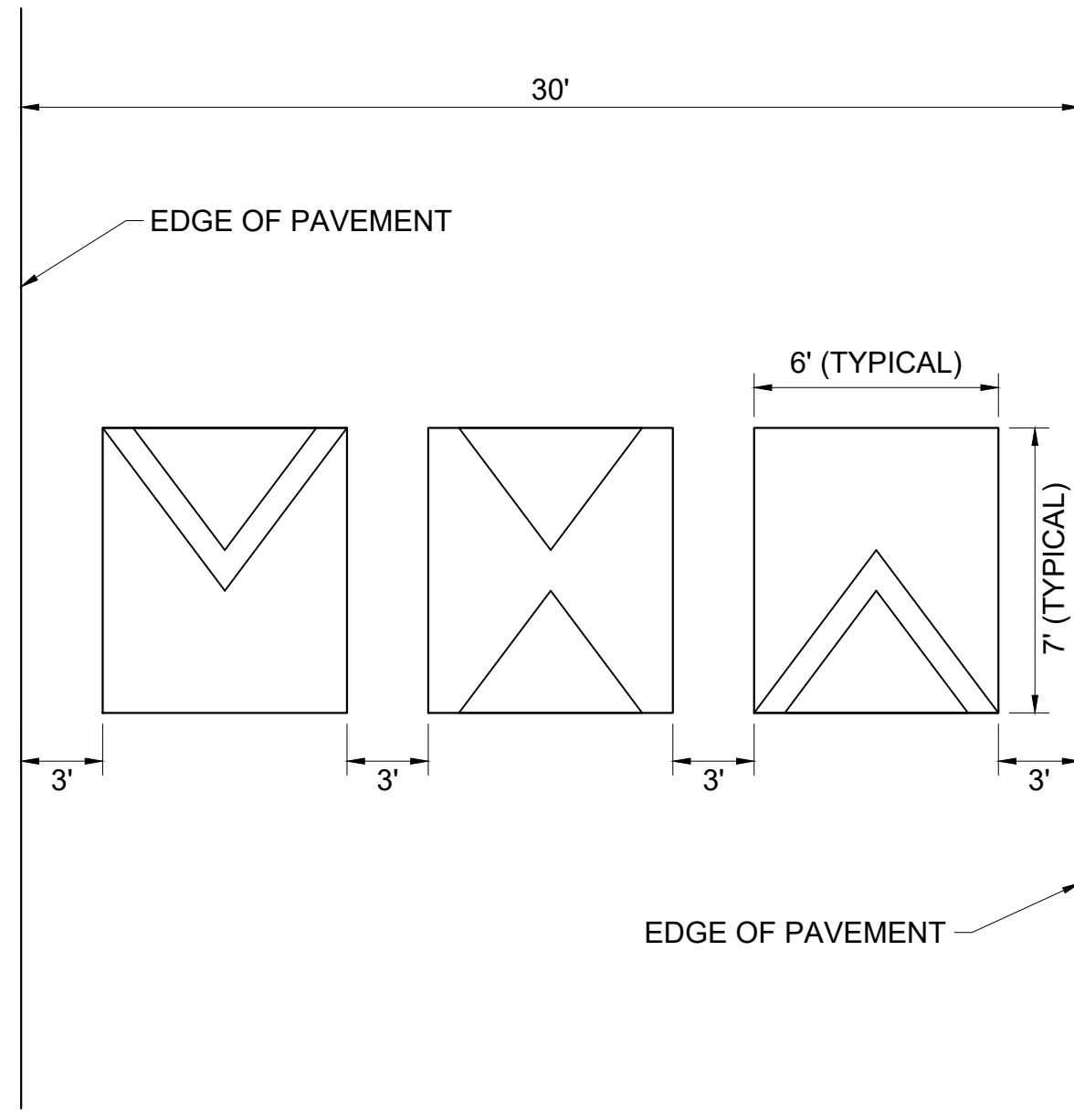


DESIGNED BY:	JH
DRAWN BY:	EMT
CHECKED BY:	NDOT
DATE:	11/8/2022
KIMLEY-HORN PROJECT NO.:	118800030

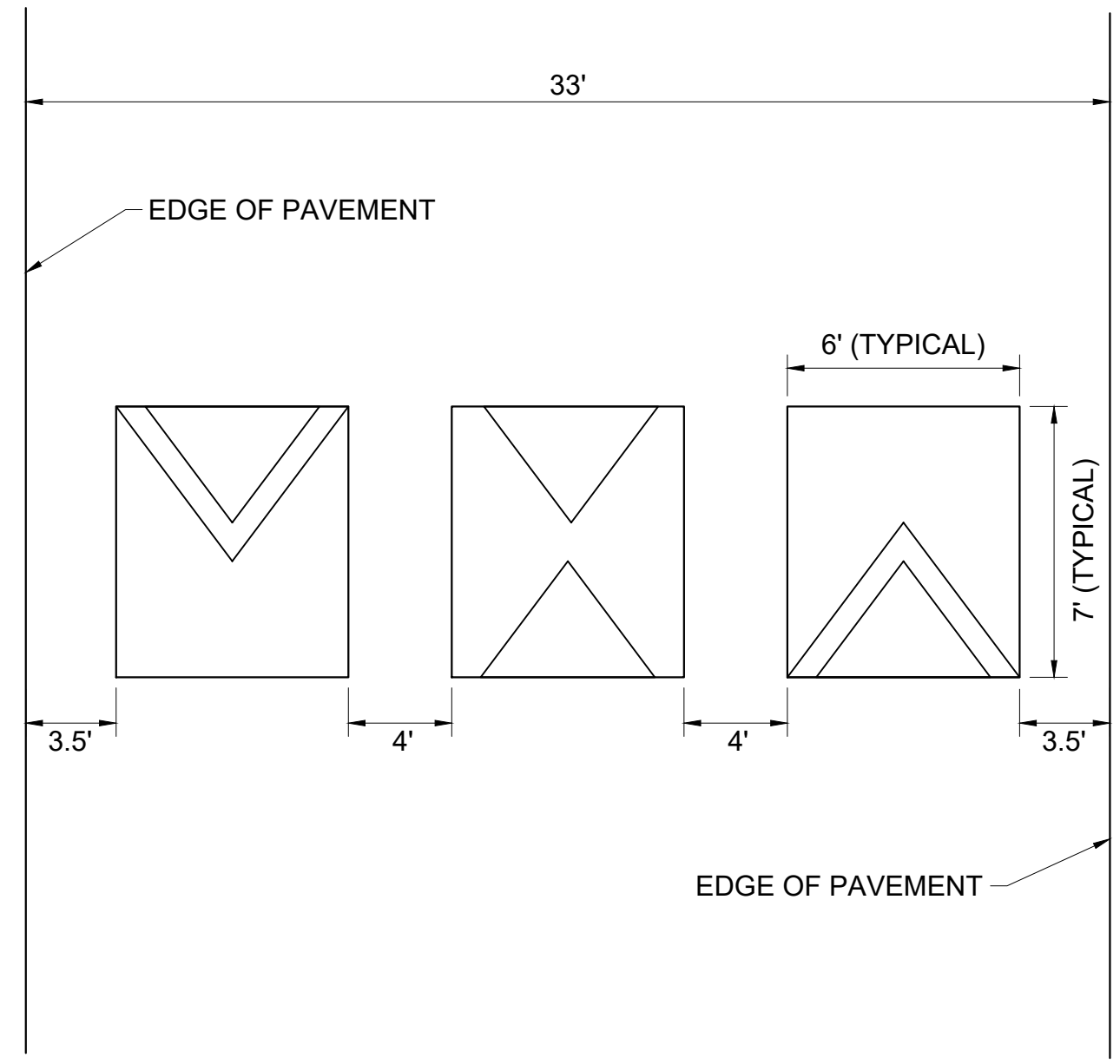


This document, together with the concepts and designs presented herein, as an instrument of service, is intended only for the specific purpose and client for which it was prepared. Reuse of and improper reliance on this document without written authorization and adaptation by Kimley-Horn and Associates, Inc. shall be without liability to Kimley-Horn and Associates, Inc.

### SPEED CUSHION CONFIGURATION A



### SPEED CUSHION CONFIGURATION B



PARAGON MILLS  
TRAFFIC CALMING  
NASHVILLE, TN



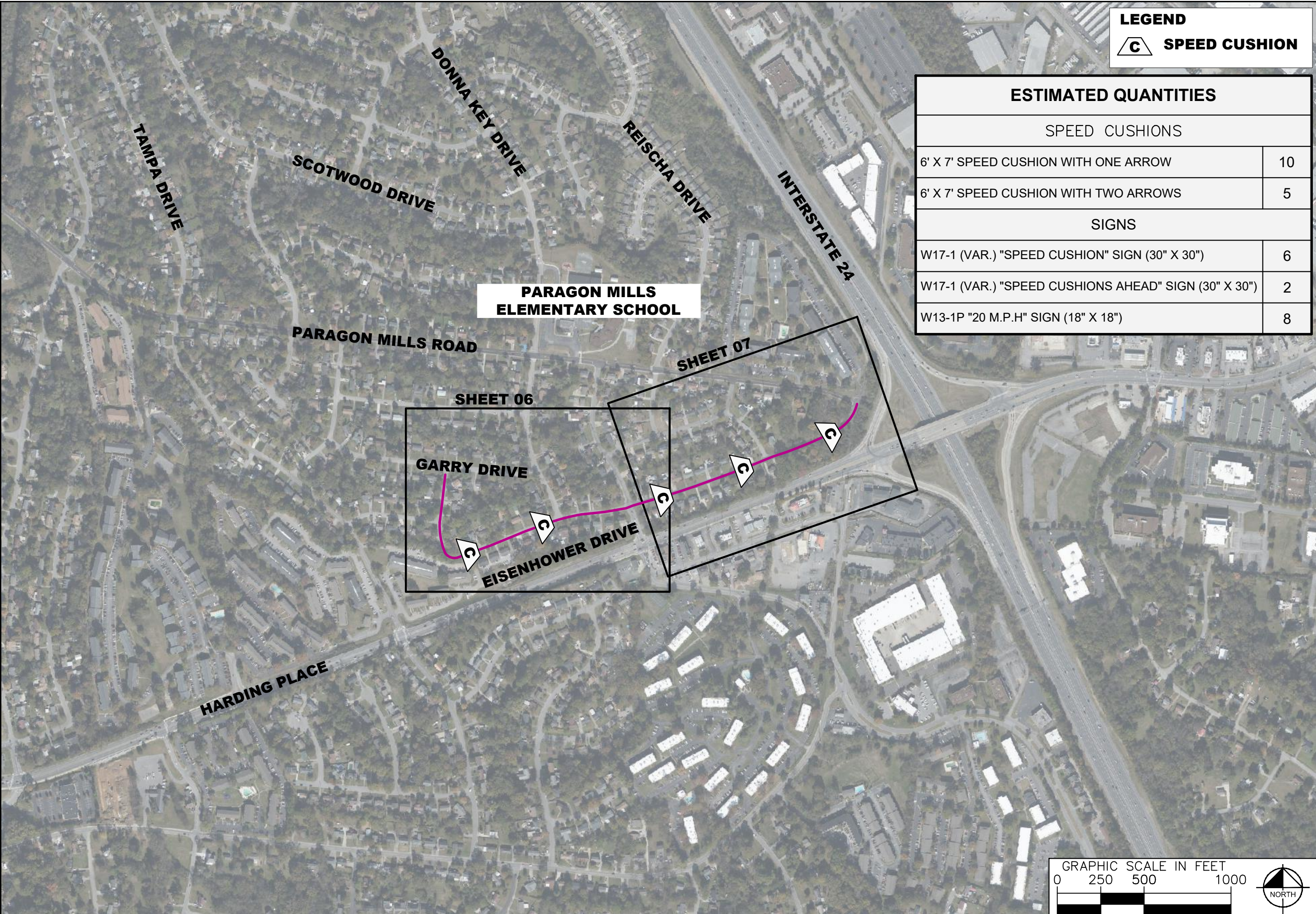
DESIGNED BY:	JH
DRAWN BY:	EMT
CHECKED BY:	NDOT
DATE:	11/8/2022
KIMLEY-HORN PROJECT NO.:	118800030

BENITA DRIVE  
DETAIL

SHEET NUMBER  
**04**



This document, together with the concepts and designs presented herein, is intended only for the specific purpose and client for which it was prepared. Reuse of and improper reliance on this document without written authorization and adaptation by Kimley-Horn and Associates, Inc. shall be without liability to Kimley-Horn and Associates, Inc.



**LEGEND**

 **SPEED CUSHION**

ESTIMATED QUANTITIES	
SPEED CUSHIONS	
6' X 7' SPEED CUSHION WITH ONE ARROW	10
6' X 7' SPEED CUSHION WITH TWO ARROWS	5
SIGNS	
W17-1 (VAR.) "SPEED CUSHION" SIGN (30" X 30")	6
W17-1 (VAR.) "SPEED CUSHIONS AHEAD" SIGN (30" X 30")	2
W13-1P "20 M.P.H" SIGN (18" X 18")	8



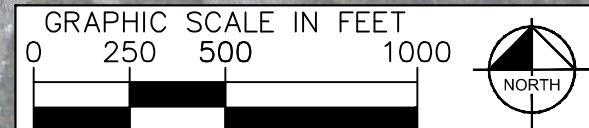
**PARAGON MILLS**  
**TRAFFIC CALMING**  
 NASHVILLE, TN



DESIGNED BY:	JH
DRAWN BY:	EMT
CHECKED BY:	NDOT
DATE:	11/8/2022
KIMLEY-HORN PROJECT NO.:	118900030

EISENHOWER DRIVE KEY

SHEET NUMBER  
**05**





This document, together with the concepts and designs presented herein, is intended only for the specific purpose and client for which it was prepared. Reuse or improper reliance on this document without written authorization and adaptation by Kimley-Horn and Associates, Inc. shall be without liability to Kimley-Horn and Associates, Inc.



PARAGON MILLS  
TRAFFIC CALMING  
NASHVILLE, TN

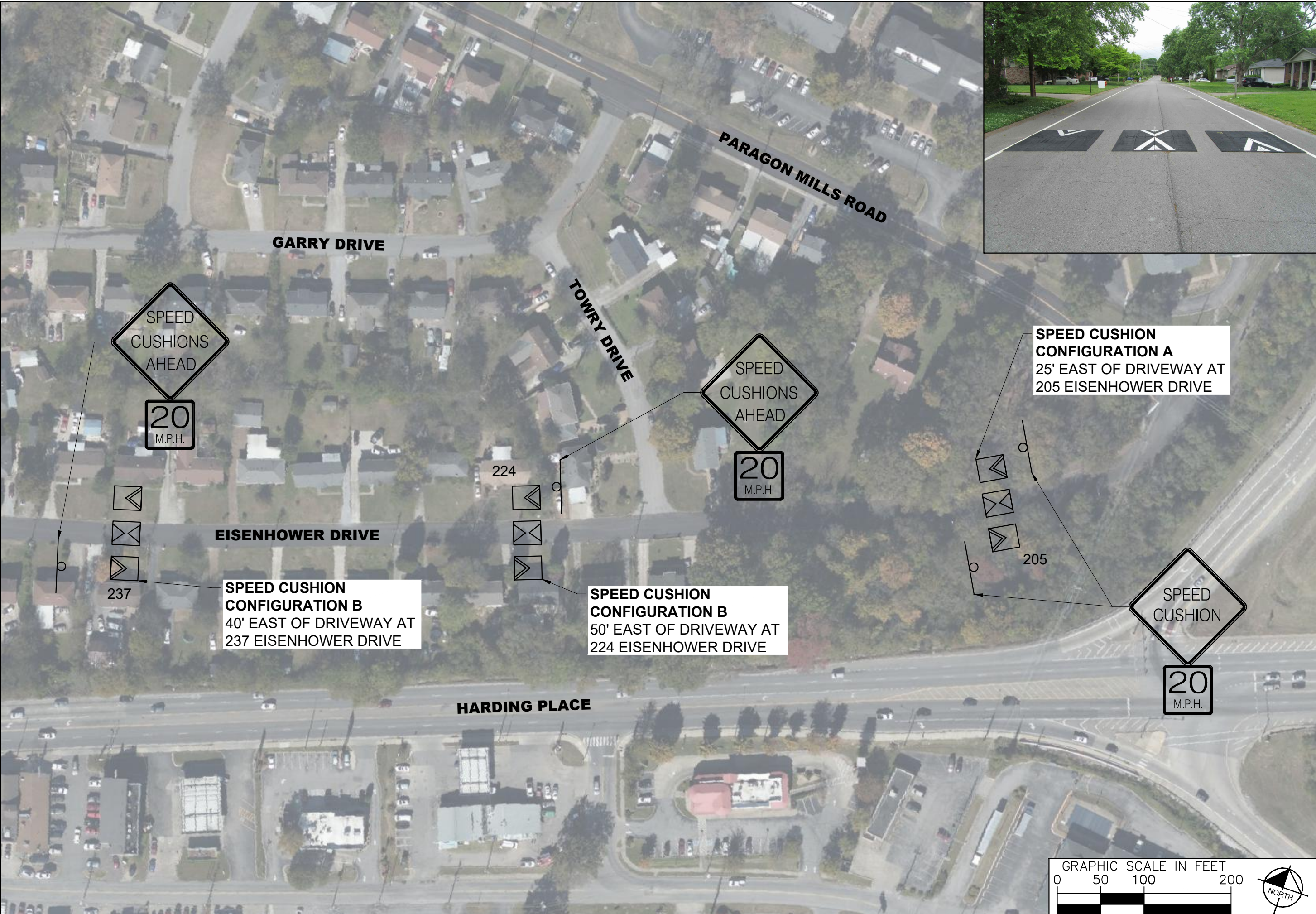


DESIGNED BY:	JH
DRAWN BY:	EMT
CHECKED BY:	NDOT
DATE:	11/8/2022
KIMLEY-HORN PROJECT NO.:	118900030

EISENHOWER DRIVE CONCEPT  
SHEET NUMBER  
**06**



This document, together with the concepts and designs presented herein, is intended only for the specific purpose and client for which it was prepared. Reuse of and improper reliance on this document without written authorization and adaptation by KIMLEY-HORN and Associates, Inc. shall be without liability to KIMLEY-HORN and Associates, Inc.

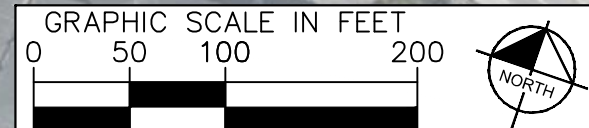


PARAGON MILLS  
TRAFFIC CALMING  
NASHVILLE, TN



DESIGNED BY:	JH
DRAWN BY:	EMT
CHECKED BY:	NDOT
DATE:	11/8/2022
KIMLEY-HORN PROJECT NO.:	11890030

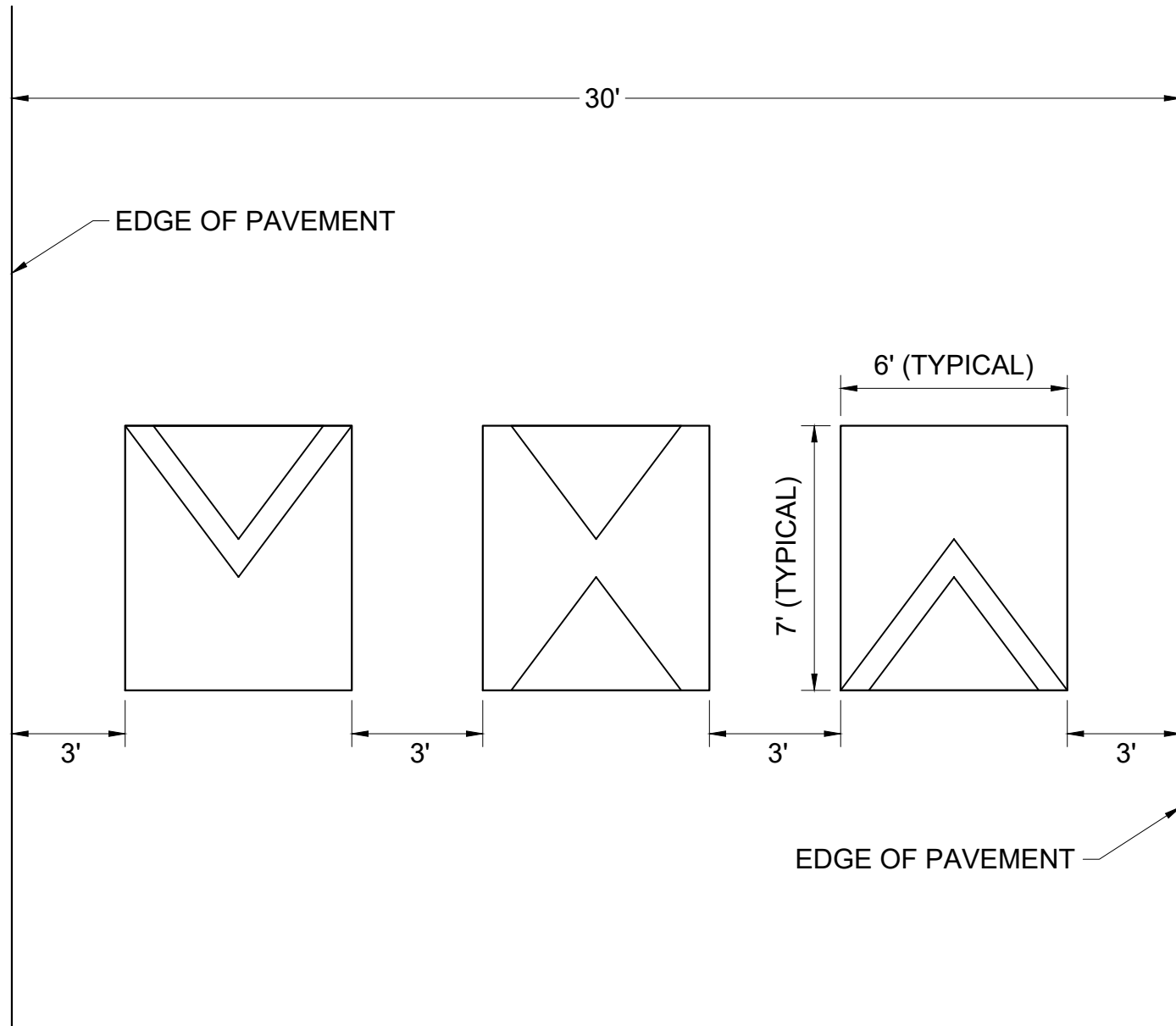
EISENHOWER  
DRIVE  
CONCEPT  
SHEET NUMBER  
**07**



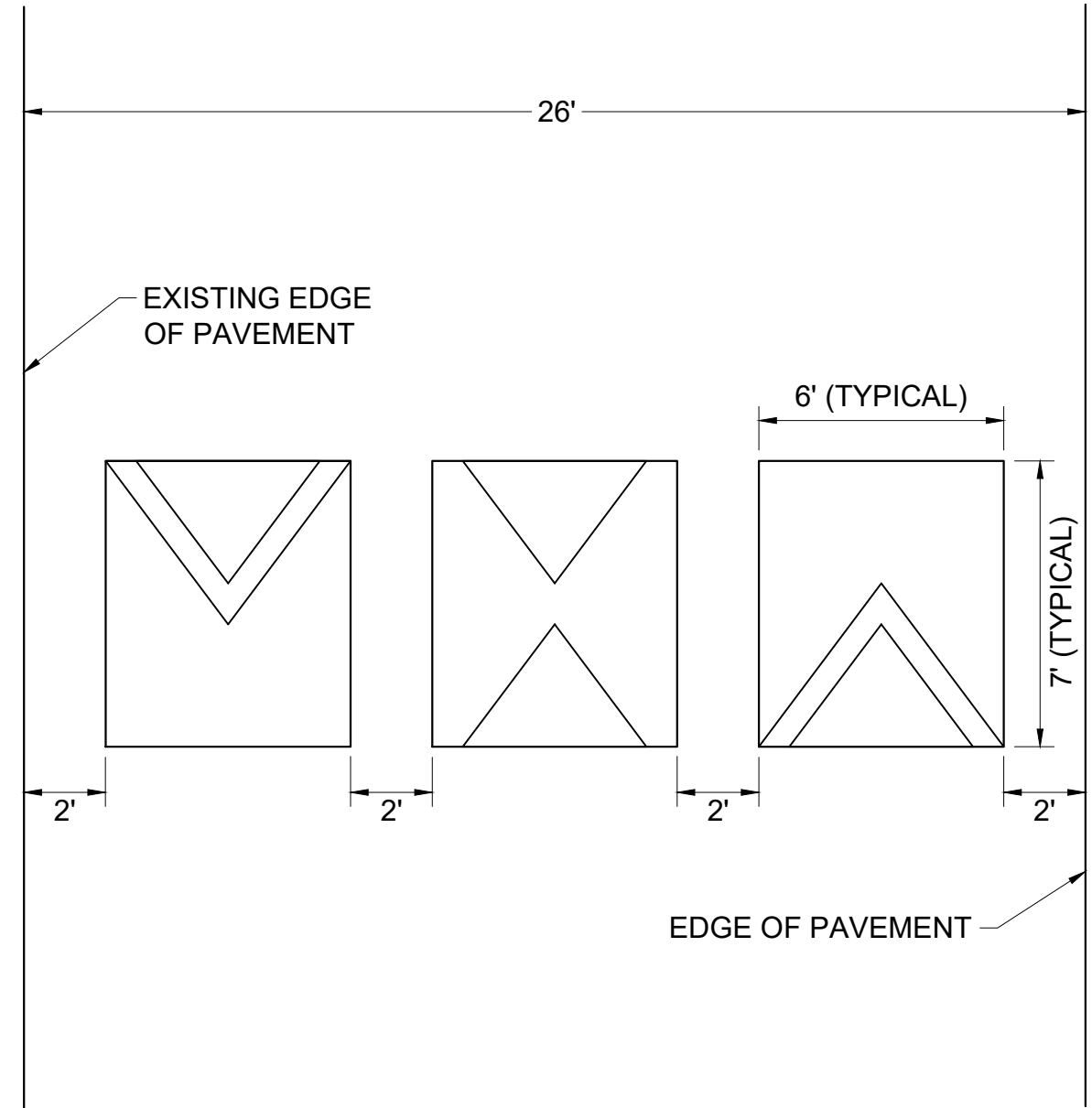


This document, together with the concepts and designs presented herein, is intended only for the specific purpose and client for which it was prepared. Reuse of and improper reliance on this document without written authorization and adaptation by Kimley-Horn and Associates, Inc. shall be without liability to Kimley-Horn and Associates, Inc.

### SPEED CUSHION CONFIGURATION A



### SPEED CUSHION CONFIGURATION B



PARAGON MILLS  
TRAFFIC CALMING  
NASHVILLE, TN



DESIGNED BY:	JH
DRAWN BY:	EMT
CHECKED BY:	NDOT
DATE:	11/8/2022
KIMLEY-HORN PROJECT NO.:	118800030

EISENHOWER  
DRIVE DETAIL

SHEET NUMBER  
**08**



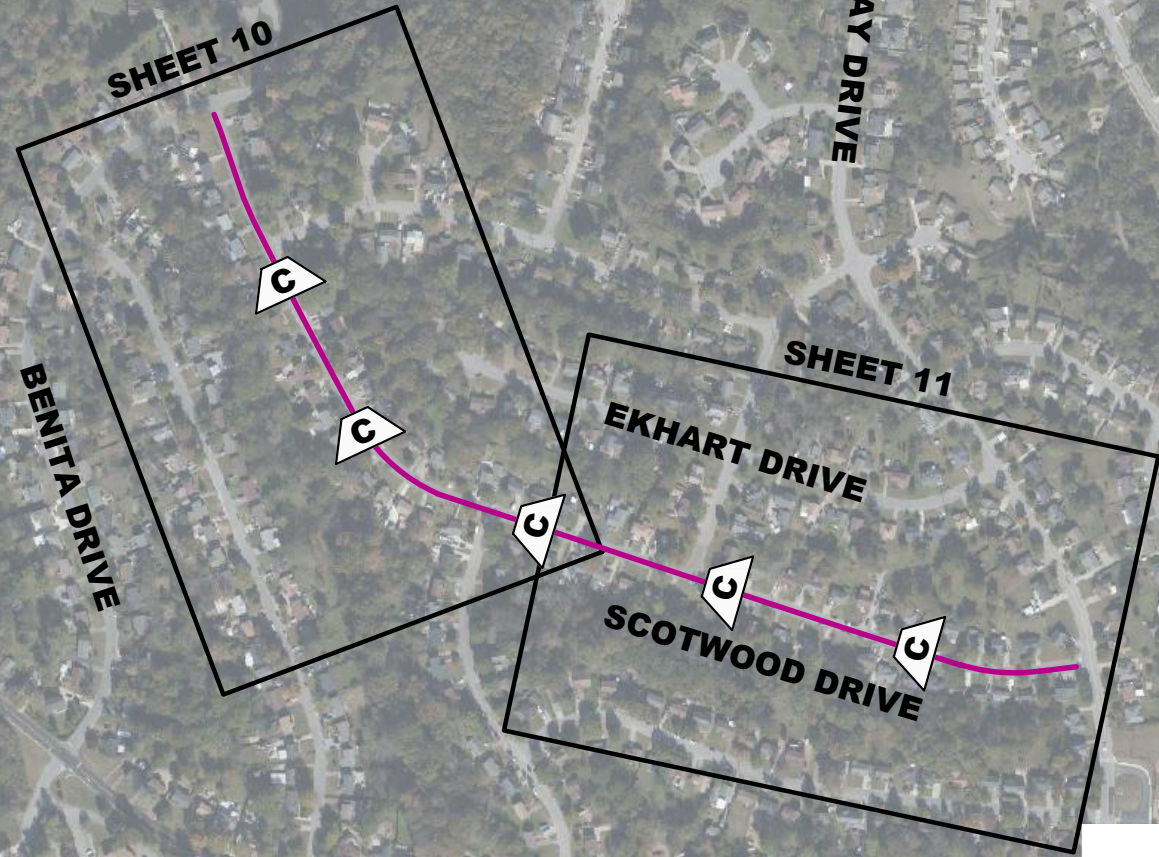
This document, together with the concepts and designs presented herein, is intended only for the specific purpose and client for which it was prepared. Reuse of and improper reliance on this document without written authorization and adaptation by Kimley-Horn and Associates, Inc. shall be without liability to Kimley-Horn and Associates, Inc.

**LEGEND**



**SPEED CUSHION**

ESTIMATED QUANTITIES	
SPEED CUSHIONS	
6' X 7' SPEED CUSHION WITH ONE ARROW	10
6' X 7' SPEED CUSHION WITH TWO ARROWS	5
SIGNS	
W17-1 (VAR.) "SPEED CUSHION" SIGN (30" X 30")	2
W17-1 (VAR.) "SPEED CUSHIONS AHEAD" SIGN (30" X 30")	4
W13-1P "20 M.P.H" SIGN (18" X 18")	6



PARAGON MILLS  
TRAFFIC CALMING  
NASHVILLE, TN



DESIGNED BY:	JH
DRAWN BY:	EMT
CHECKED BY:	NDOT
DATE:	11/8/2022
KIMLEY-HORN PROJECT NO.:	118800030

SCOTWOOD  
DRIVE KEY  
SHEET NUMBER  
**09**

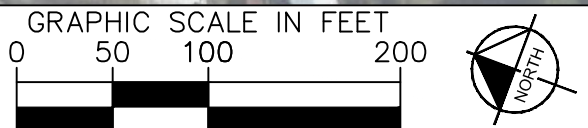
GRAPHIC SCALE IN FEET





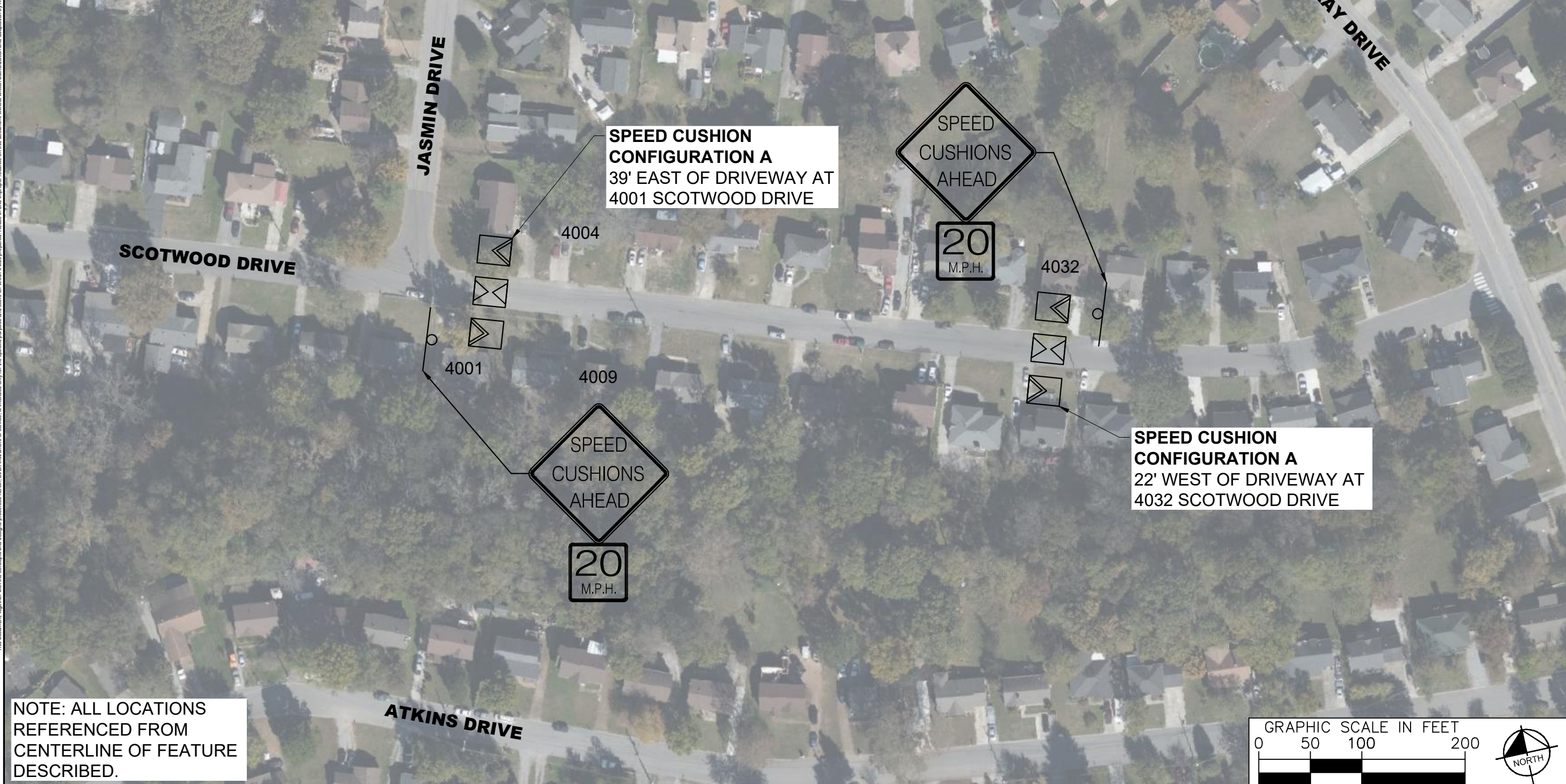



**NOTE: ALL LOCATIONS REFERENCED FROM CENTERLINE OF FEATURE DESCRIBED.**

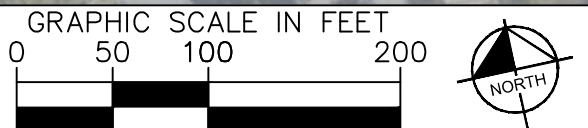


DESIGNED BY:	JH
DRAWN BY:	EMT
CHECKED BY:	NDOT
DATE:	11/8/2022
KIMLEY-HORN PROJECT NO.:	118900030
SCOTWOOD DRIVE CONCEPT	
SHEET NUMBER	<b>10</b>





**NOTE: ALL LOCATIONS REFERENCED FROM CENTERLINE OF FEATURE DESCRIBED.**

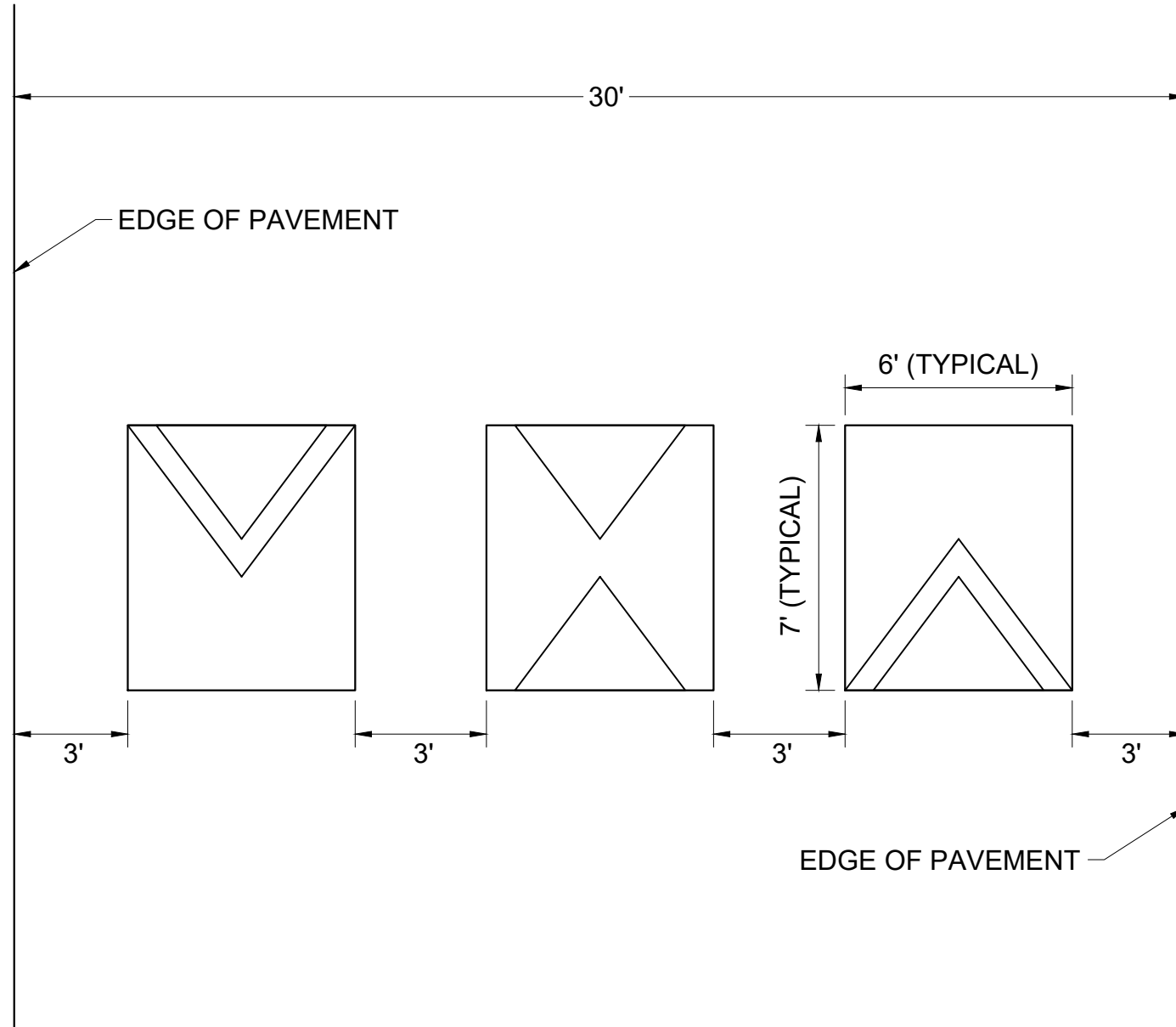


DESIGNED BY:	JH
DRAWN BY:	EMT
CHECKED BY:	NDOT
DATE:	11/8/2022
KIMLEY-HORN PROJECT NO.:	118900030
SCOTWOOD DRIVE CONCEPT	
SHEET NUMBER	<b>11</b>



This document, together with the concepts and designs presented herein, as an instrument of service, is intended only for the specific purpose and client for which it was prepared. Reuse of and improper reliance on this document without written authorization and adaptation by Kimley-Horn and Associates, Inc. shall be without liability to Kimley-Horn and Associates, Inc.

### SPEED CUSHION CONFIGURATION A



PARAGON MILLS  
TRAFFIC CALMING  
NASHVILLE, TN



DESIGNED BY:	JH
DRAWN BY:	EMT
CHECKED BY:	NDOT
DATE:	11/8/2022
KIMLEY-HORN PROJECT NO.	118800030

SCOTWOOD  
DRIVE DETAIL

SHEET NUMBER  
**12**