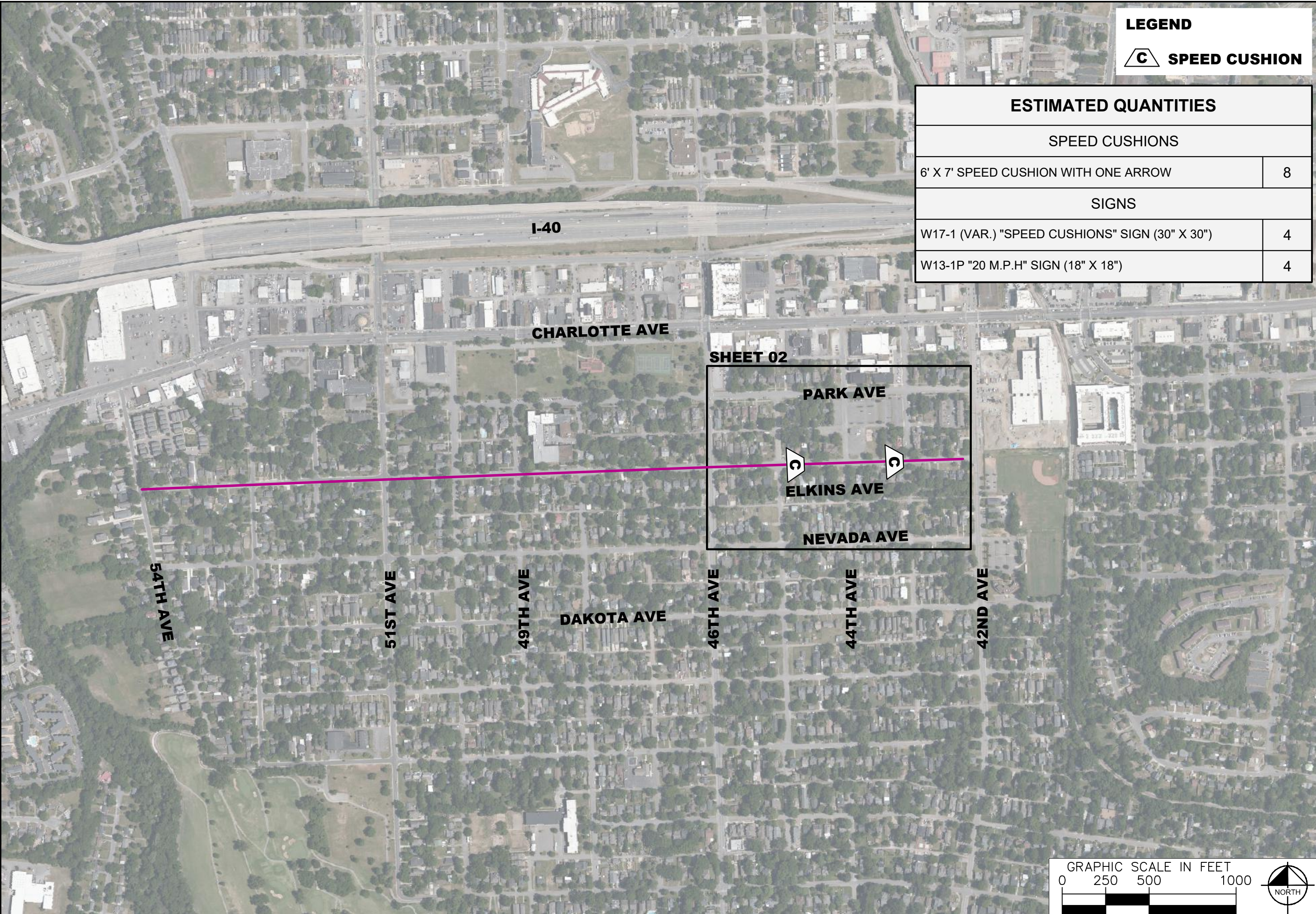



This document, together with the concepts and designs presented herein, is intended only for the specific purpose and client for which it was prepared. Reuse of and improper reliance on this document without written authorization and adaptation by Kimley-Horn and Associates, Inc. shall be without liability to Kimley-Horn and Associates, Inc.



**LEGEND**

 **SPEED CUSHION**

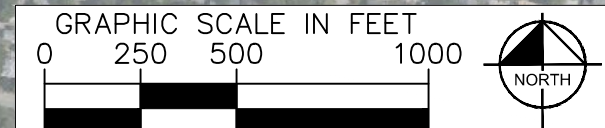
ESTIMATED QUANTITIES	
SPEED CUSHIONS	
6' X 7' SPEED CUSHION WITH ONE ARROW	8
SIGNS	
W17-1 (VAR.) "SPEED CUSHIONS" SIGN (30" X 30")	4
W13-1P "20 M.P.H" SIGN (18" X 18")	4



ELKINS AVENUE  
TRAFFIC CALMING  
NASHVILLE, TN



DESIGNED BY:	JH
DRAWN BY:	EMT
CHECKED BY:	NDOT
DATE:	1/10/2023
KIMLEY-HORN PROJECT NO.	118800030



KEY
SHEET NUMBER
<b>01</b>

This document, together with the concepts and designs presented herein, is intended only for the specific purpose and client for which it was prepared. Reuse or improper reliance on this document without written authorization and adaptation by Kimley-Horn and Associates, Inc. shall be without liability to Kimley-Horn and Associates, Inc.



DESIGNED BY:	JH
DRAWN BY:	EMT
CHECKED BY:	NDOT
DATE:	1/10/2023
KIMLEY-HORN PROJECT NO.:	118800030

This document, together with the concepts and designs presented herein, as an instrument of service, is intended only for the specific purpose and client for which it was prepared. Reuse of and improper reliance on this document without written authorization and adaptation by Kimley-Horn and Associates, Inc. shall be without liability to Kimley-Horn and Associates, Inc.

### CONFIGURATION A

