




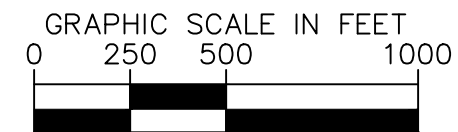
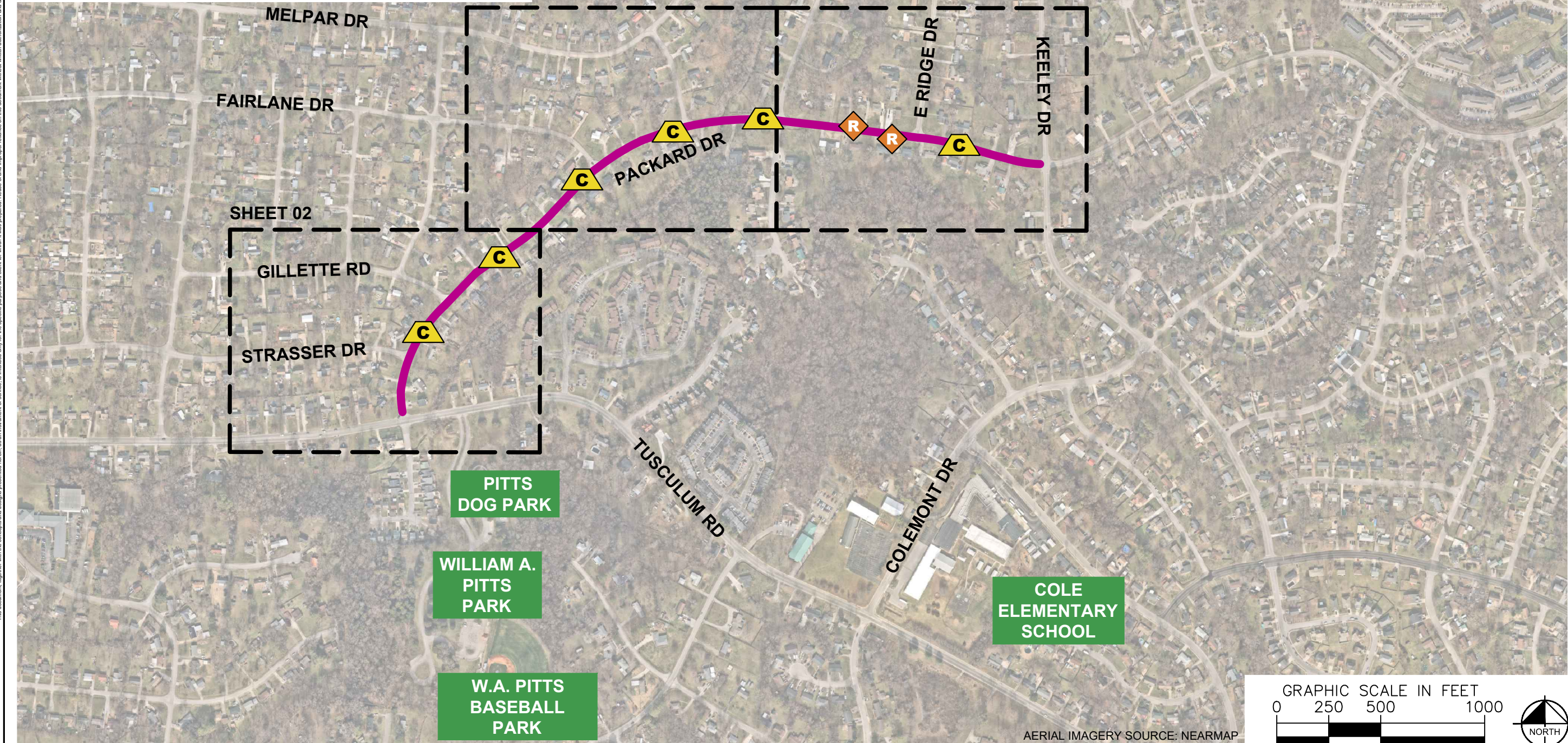
ESTIMATED QUANTITIES

SPEED CUSHIONS	
6' X 14' SPEED CUSHION WITH ONE ARROW	12
SIGNING	
W17-1 (VAR.) "SPEED CUSHION" SIGN (30" X 30")	8
W17-1 (VAR.) "SPEED CUSHIONS" SIGN (30" X 30")	2
W13-1P "20 M.P.H" SIGN (18" X 18")	10
RADAR FEEDBACK SIGN	2

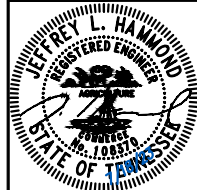
NOTE: ALL LOCATIONS ARE REFERENCED FROM CENTERLINE OF DRIVEWAYS OR OTHER LANDMARKS TO THE CENTER OF SPEED CUSHIONS OR SIGNS.

LEGEND

-  LIMITS OF TRAFFIC CALMING PROJECT
-  SPEED CUSHIONS
-  RADAR FEEDBACK SIGN



AERIAL IMAGERY SOURCE: NEARMAP

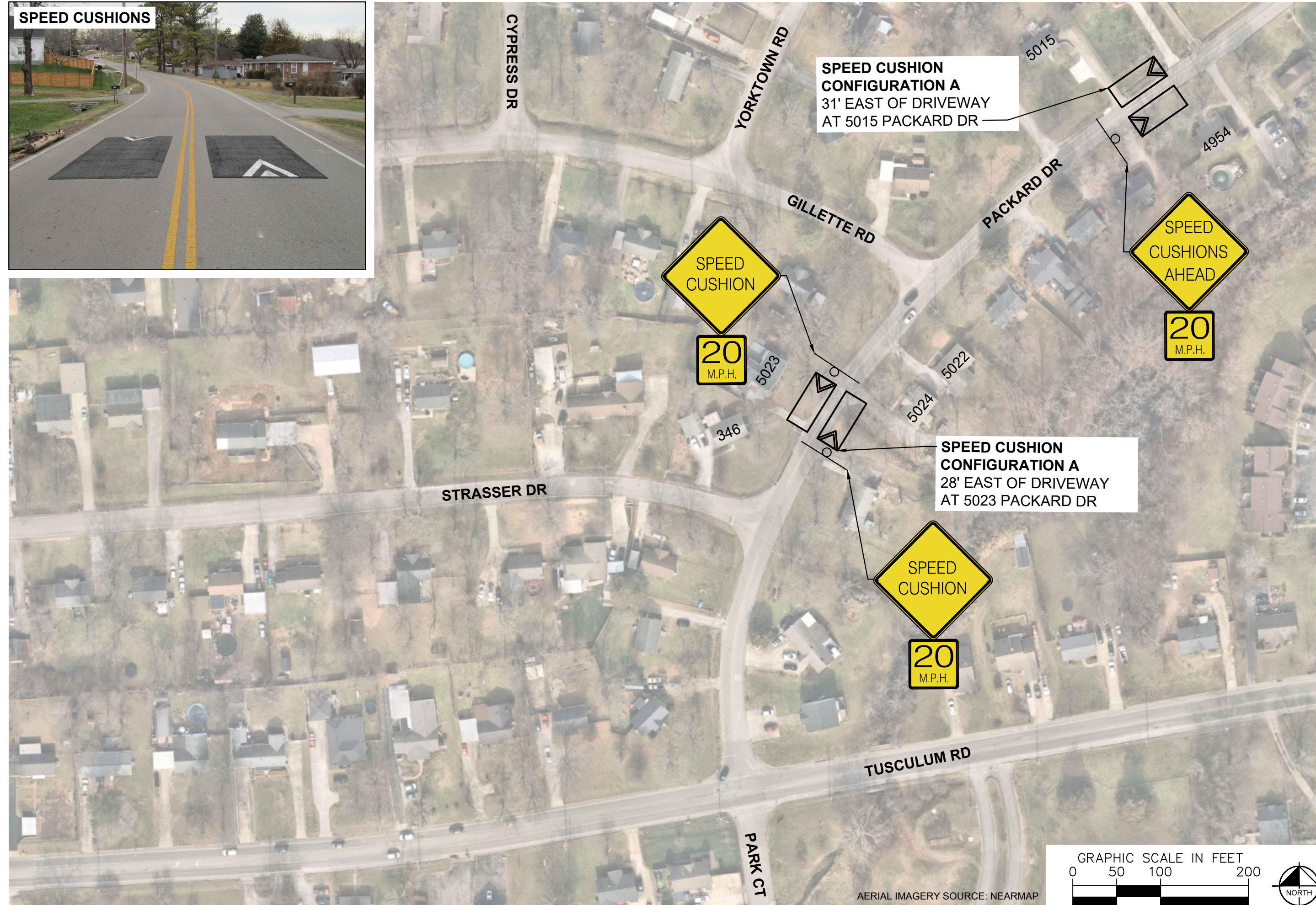


DESIGNED BY:	JLH
DRAWN BY:	JTL
CHECKED BY:	NDOT
DATE:	7/18/2023
KIMLEY-HORN PROJECT NO. 118900036	

KEY
SHEET NUMBER
01

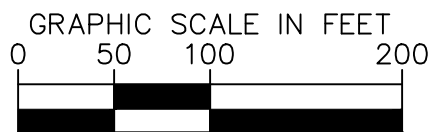
This document, together with the concepts and designs presented herein, is intended only for the specific purpose and client for which it was prepared. Reuse of and improper reliance on this document without written authorization and adaptation by Kimley-Horn and Associates, Inc. shall be without liability to Kimley-Horn and Associates, Inc.

SPEED CUSHIONS



SPEED CUSHION CONFIGURATION A
31' EAST OF DRIVEWAY
AT 5015 PACKARD DR

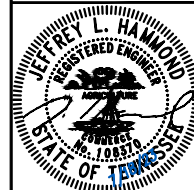
SPEED CUSHION CONFIGURATION A
28' EAST OF DRIVEWAY
AT 5023 PACKARD DR



AERIAL IMAGERY SOURCE: NEARMAP

NDOT

**PACKARD DRIVE
TRAFFIC CALMING**
NASHVILLE, TN

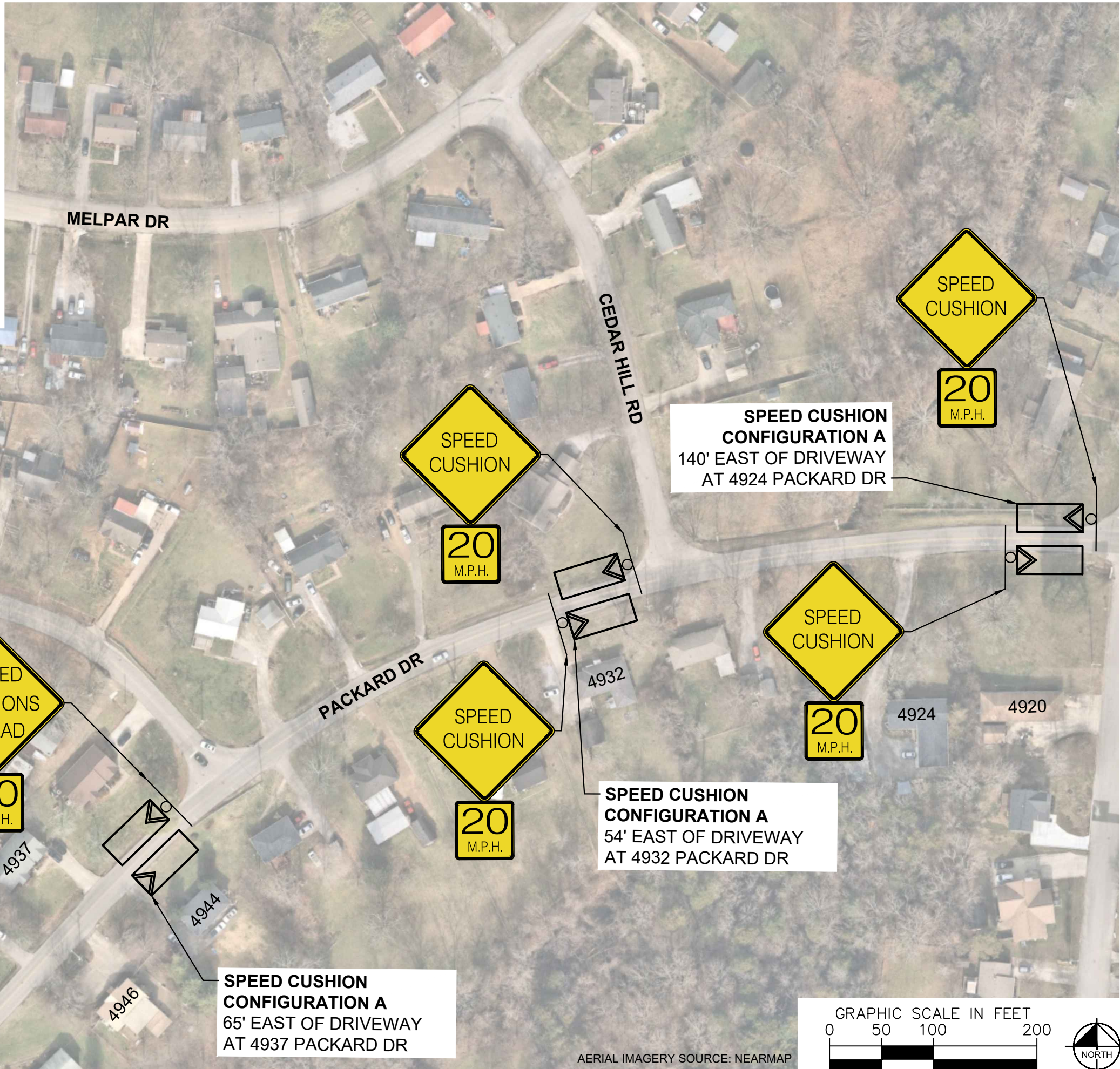
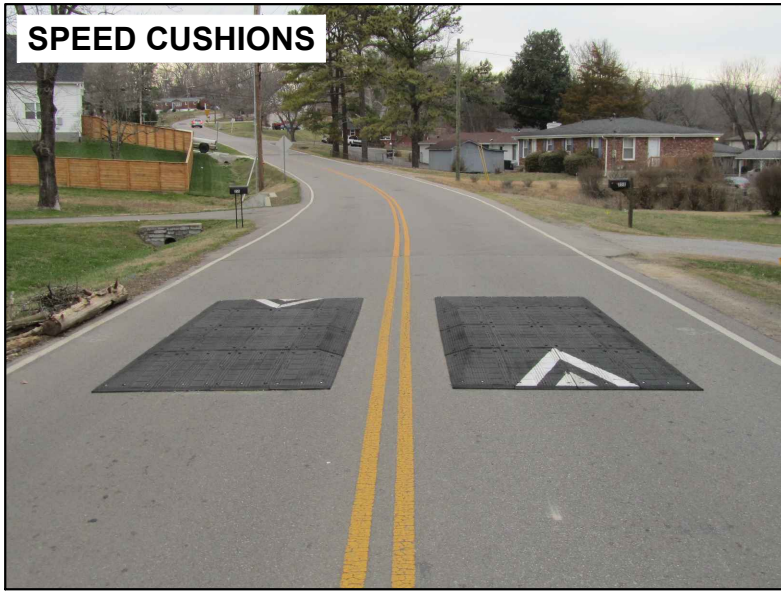


DESIGNED BY:	JLH
DRAWN BY:	JTL
CHECKED BY:	NDOT
DATE:	7/19/2023
KIMLEY-HORN PROJECT NO. 118900036	

CONCEPT
SHEET NUMBER
02

This document, together with the concepts and designs presented herein, is intended only for the specific purpose and client for which it was prepared. Reuse of and improper reliance on this document without written authorization and adaptation by Kimley-Horn and Associates, Inc. shall be without liability to Kimley-Horn and Associates, Inc.

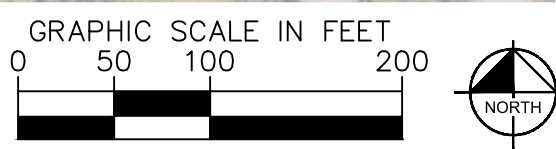
SPEED CUSHIONS



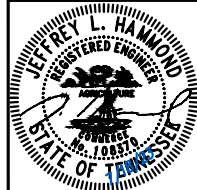
SPEED CUSHION CONFIGURATION A
140' EAST OF DRIVEWAY
AT 4924 PACKARD DR

SPEED CUSHION CONFIGURATION A
54' EAST OF DRIVEWAY
AT 4932 PACKARD DR

SPEED CUSHION CONFIGURATION A
65' EAST OF DRIVEWAY
AT 4937 PACKARD DR



AERIAL IMAGERY SOURCE: NEARMAP



DESIGNED BY:	JLH
DRAWN BY:	JTL
CHECKED BY:	NDOT
DATE:	7/19/2023
KIMLEY-HORN PROJECT NO. 11880036	

SPEED CUSHIONS



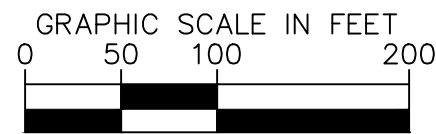
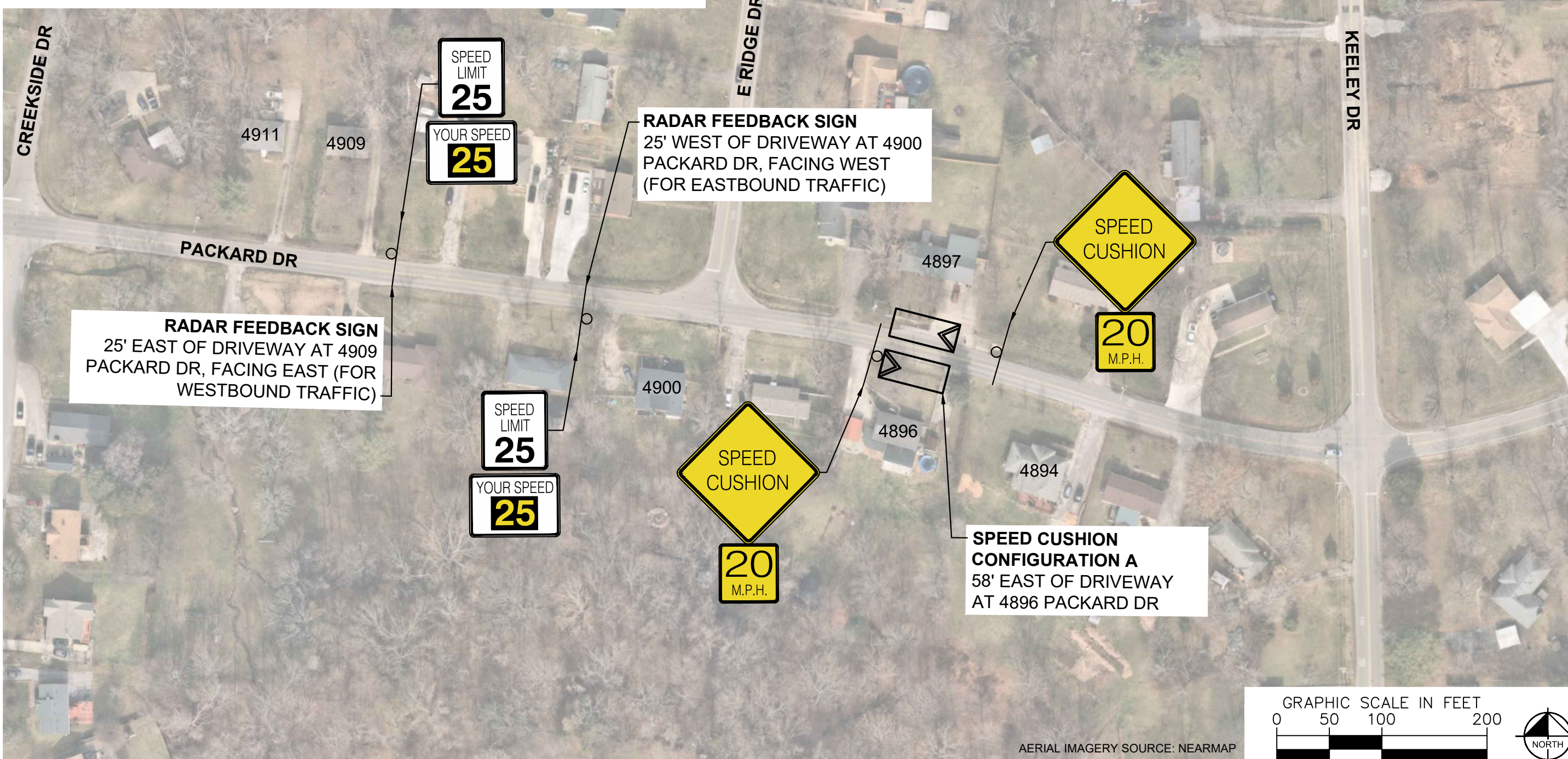
RADAR FEEDBACK SIGN



CREEKSIDE DR

E RIDGE DR

KEELEY DR



AERIAL IMAGERY SOURCE: NEARMAP



PACKARD DRIVE
TRAFFIC CALMING
NASHVILLE, TN



DESIGNED BY:	JLH
DRAWN BY:	JTL
CHECKED BY:	NDOT
DATE:	7/19/2023
KIMLEY-HORN PROJECT NO.	118800036

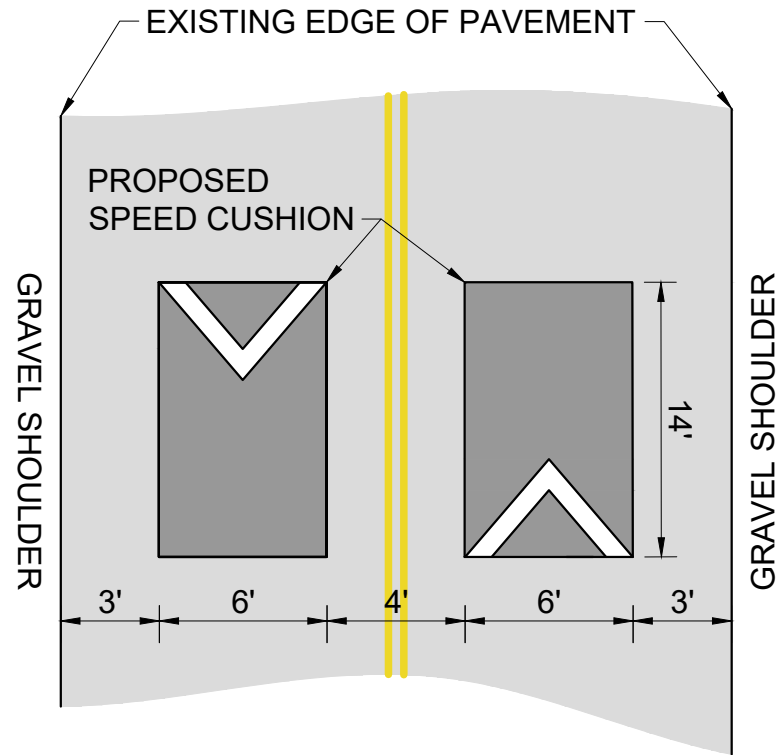
CONCEPT

SHEET NUMBER
04

This document, together with the concepts and designs presented herein, is intended only for the specific purpose and client for which it was prepared. Reuse of and improper reliance on this document without written authorization and adaptation by Kimley-Horn and Associates, Inc. shall be without liability to Kimley-Horn and Associates, Inc.

CONFIGURATION A

22' OF PAVEMENT



This document, together with the concepts and designs presented herein, is intended only for the specific purpose and client for which it was prepared. Reuse of and improper reliance on this document without written authorization and adaptation by Kimley-Horn and Associates, Inc. shall be without liability to Kimley-Horn and Associates, Inc.



PACKARD DRIVE
TRAFFIC CALMING
NASHVILLE, TN



DESIGNED BY: JLH
DRAWN BY: JTL
CHECKED BY: NDOT
DATE: 7/18/2023
KIMLEY-HORN PROJECT NO. 118800036

DETAIL

SHEET NUMBER
05