

ESTIMATED QUANTITIES

SPEED CUSHIONS

6' X 10.5' SPEED CUSHION WITH ONE ARROW	6
---	---

SIGNING

W17-1 (VAR.) "SPEED CUSHION" SIGN (30" X 30")	6
---	---

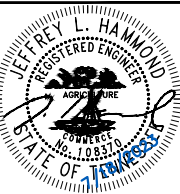
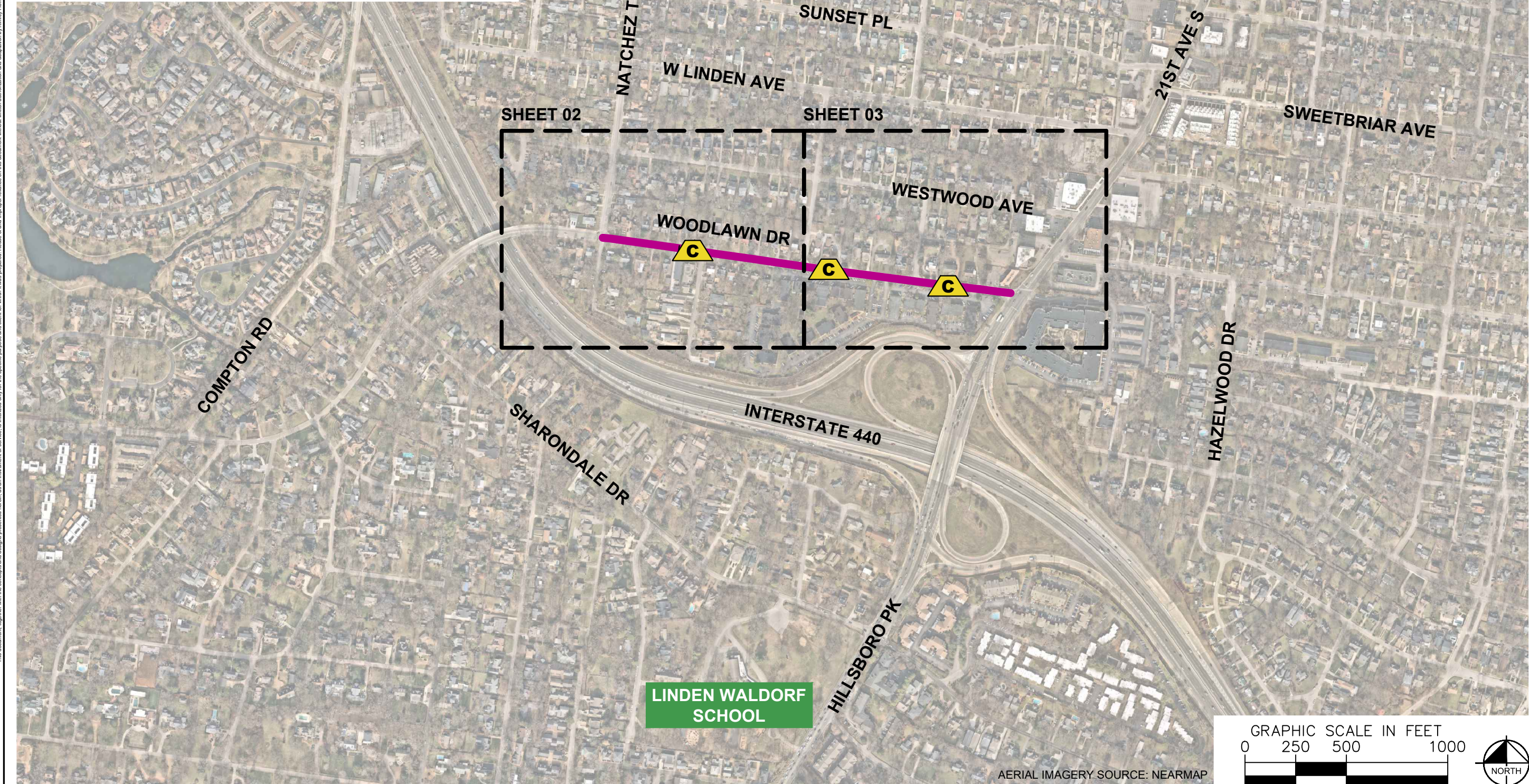
W13-1P "20 M.P.H" SIGN (18" X 18")	6
------------------------------------	---

NOTE: ALL LOCATIONS ARE REFERENCED FROM CENTERLINE OF DRIVEWAYS OR OTHER LANDMARKS TO THE CENTER OF SPEED CUSHIONS OR SIGNS.

LEGEND

 LIMITS OF TRAFFIC CALMING PROJECT

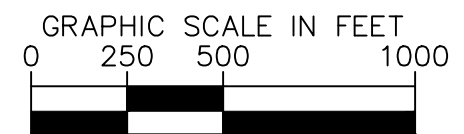
 SPEED CUSHIONS



DESIGNED BY:	JLH
DRAWN BY:	GGG
CHECKED BY:	NDOT
DATE:	7/18/2023
KIMLEY-HORN PROJECT NO. 118800036	

KEY

SHEET NUMBER
01

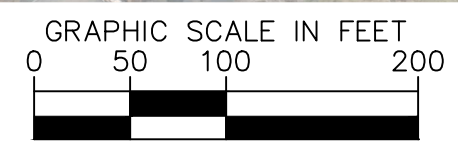
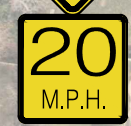


AERIAL IMAGERY SOURCE: NEARMAP

SPEED CUSHIONS



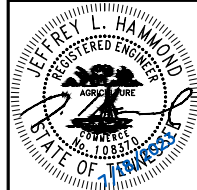
SPEED CUSHION CONFIGURATION A
43'
EAST OF DRIVEWAY AT
2703 WOODLAWN DR



AERIAL IMAGERY SOURCE: NEARMAP



WOODLAWN DRIVE
TRAFFIC CALMING
NASHVILLE, TN



DESIGNED BY:	JLH
DRAWN BY:	GGG
CHECKED BY:	NDOT
DATE:	7/18/2023
KIMLEY-HORN PROJECT NO. 118800036	

CONCEPT
SHEET NUMBER
02

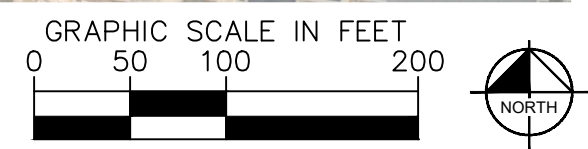
This document, together with the concepts and designs presented herein, is intended only for the specific purpose and client for which it was prepared. Reuse of and improper reliance on this document without written authorization and adaptation by Kimley-Horn and Associates, Inc. shall be without liability to Kimley-Horn and Associates, Inc.

SPEED CUSHIONS

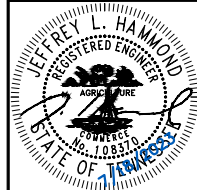


SPEED CUSHION CONFIGURATION A
39' EAST OF DRIVEWAY AT 2510 WOODLAWN DR

SPEED CUSHION CONFIGURATION A
25' EAST OF WOOD POLE AT 2108 WOODLAWN DR



AERIAL IMAGERY SOURCE: NEARMAP



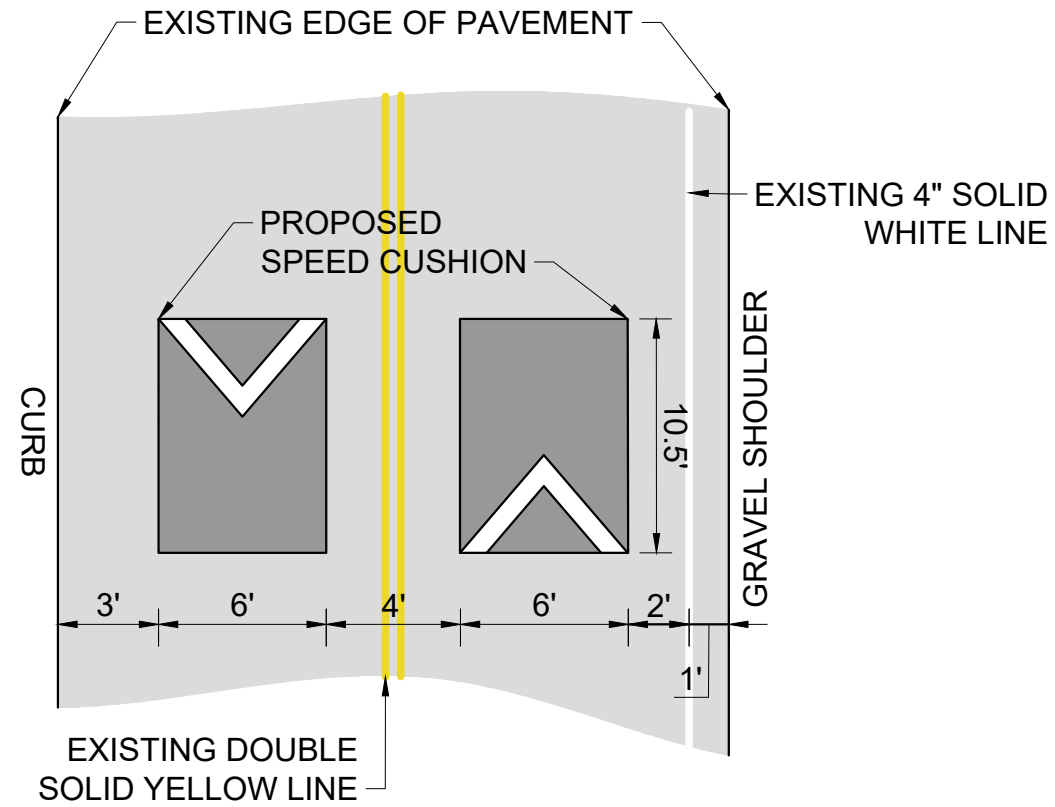
DESIGNED BY:	JLH
DRAWN BY:	GGG
CHECKED BY:	NDOT
DATE:	7/19/2023
KIMLEY-HORN PROJECT NO.	118800036

This document, together with the concepts and designs presented herein, is intended only for the specific purpose and client for which it was prepared. Reuse of and improper reliance on this document without written authorization and adaptation by Kimley-Horn and Associates, Inc. shall be without liability to Kimley-Horn and Associates, Inc.

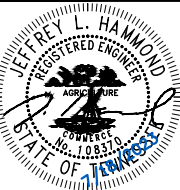
This document, together with the concepts and designs presented herein, as an instrument of service, is intended only for the specific purpose and client for which it was prepared. Reuse of and improper reliance on this document without written authorization and adaptation by Kimley-Horn and Associates, Inc. shall be without liability to Kimley-Horn and Associates, Inc.

CONFIGURATION A

22' OF PAVEMENT



WOODLAWN DRIVE
TRAFFIC CALMING
NASHVILLE, TN



DESIGNED BY:	JLH
DRAWN BY:	GGG
CHECKED BY:	NDOT
DATE:	7/18/2023
KIMLEY-HORN PROJECT NO.:	118800036

DETAIL

SHEET NUMBER
04