

ESTIMATED QUANTITIES

SPEED CUSHIONS

6' X 10.5' SPEED CUSHION WITH ONE ARROW	10
---	----

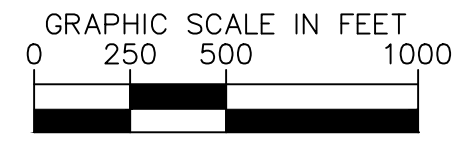
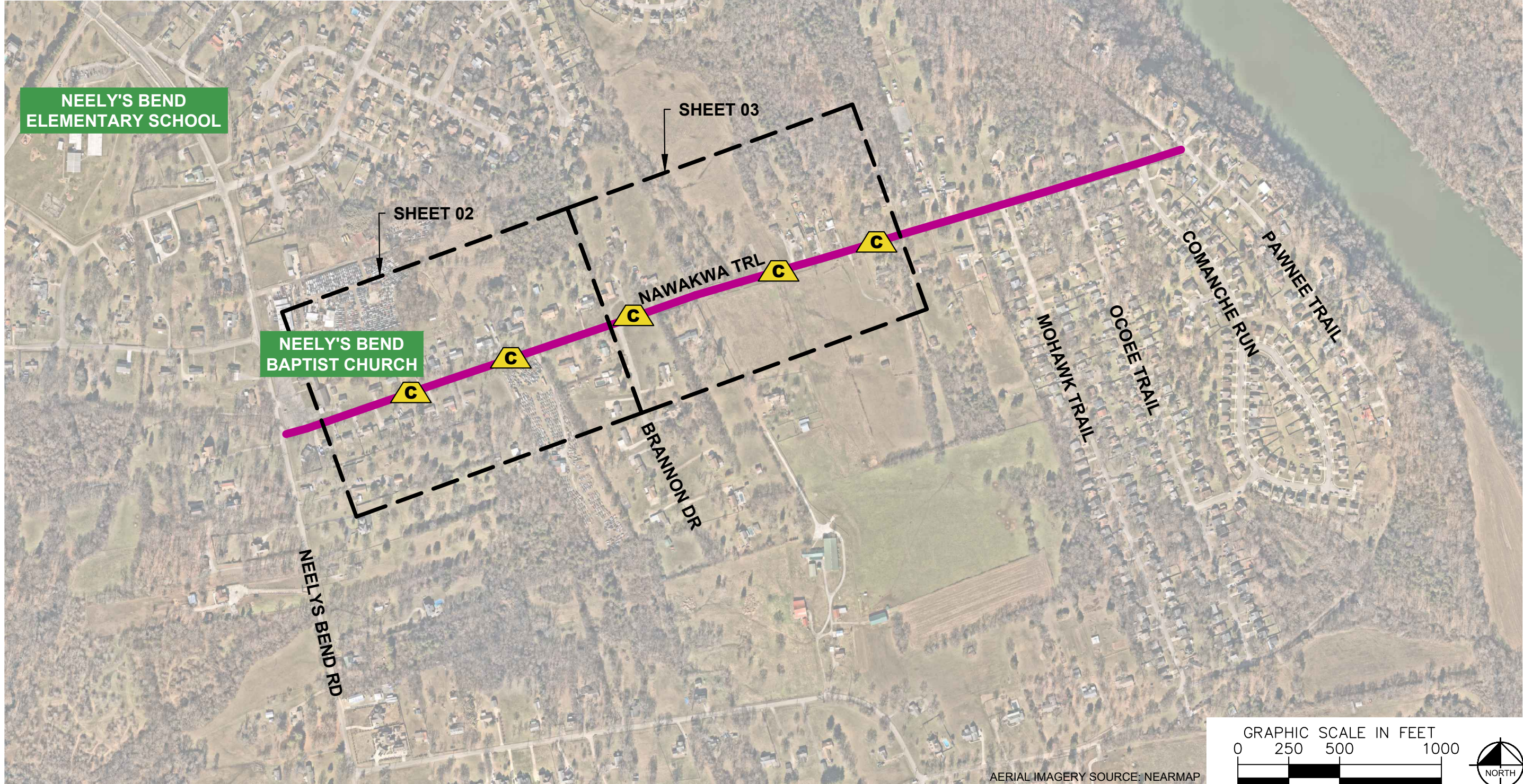
SIGNING

W17-1 (VAR.) "SPEED CUSHION" SIGN (30" X 30")	4
W13-1P "20 M.P.H" SIGN (18" X 18")	4

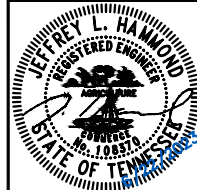
NOTE: ALL LOCATIONS ARE REFERENCED FROM CENTERLINE OF DRIVEWAYS OR OTHER LANDMARKS TO THE CENTER OF SPEED CUSHIONS OR SIGNS.

LEGEND

-  LIMITS OF TRAFFIC CALMING PROJECT
-  SPEED CUSHIONS



AERIAL IMAGERY SOURCE: NEARMAP



DESIGNED BY: ALB
DRAWN BY: DJG
CHECKED BY: NDOT
DATE: 8/29/2023
KIMLEY-HORN PROJECT NO. 118800036

KEY
SHEET NUMBER
01

This document, together with the concepts and designs presented herein, is intended only for the specific purpose and client for which it was prepared. Reuse of and improper reliance on this document without written authorization and adaptation by Kimley-Horn and Associates, Inc. shall be without liability to Kimley-Horn and Associates, Inc.

SPEED CUSHIONS

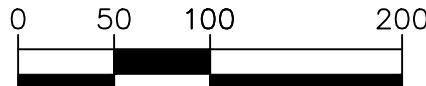


SPEED CUSHION CONFIGURATION A
46' WEST OF DRIVEWAY AT 612 NAWAKWA TRL

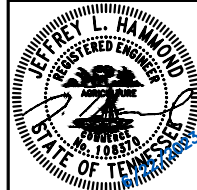
SPEED CUSHION CONFIGURATION A
100' WEST OF DRIVEWAY AT 544 NAWAKWA TRL



GRAPHIC SCALE IN FEET



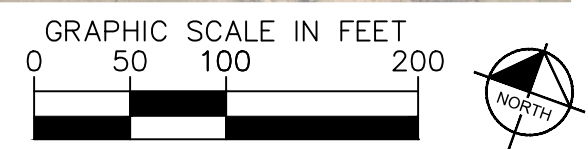
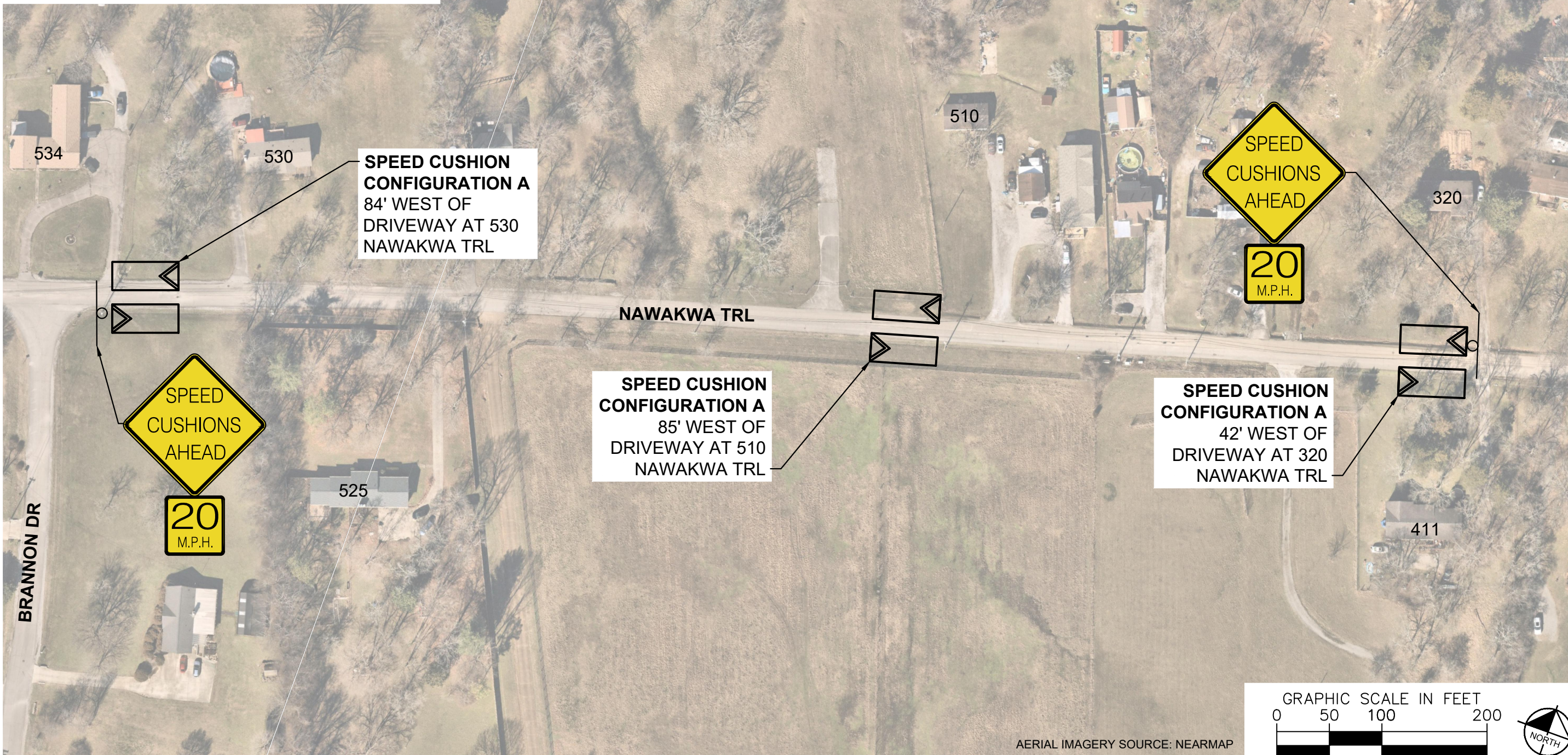
AERIAL IMAGERY SOURCE: NEARMAP



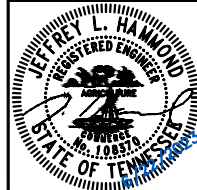
DESIGNED BY:	ALB
DRAWN BY:	DJG
CHECKED BY:	NDOT
DATE:	8/29/2023
KIMLEY-HORN PROJECT NO. 118900036	

This document, together with the concepts and designs presented herein, is intended only for the specific purpose and client for which it was prepared. Reuse of this document without written authorization and adaptation by Kimley-Horn and Associates, Inc. shall be without liability to Kimley-Horn and Associates, Inc.

SPEED CUSHIONS



AERIAL IMAGERY SOURCE: NEARMAP



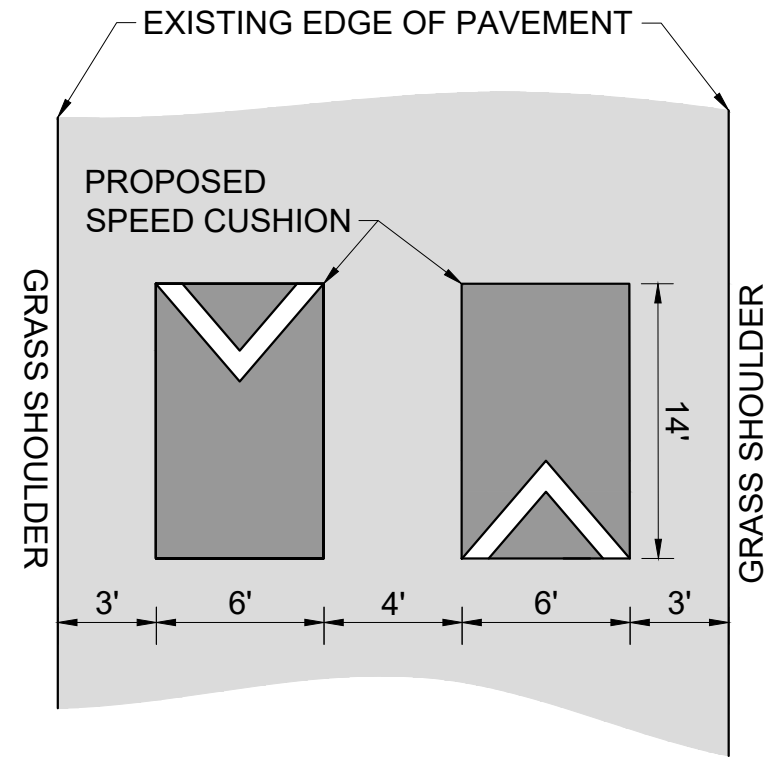
DESIGNED BY:	ALB
DRAWN BY:	DJG
CHECKED BY:	NDOT
DATE:	8/29/2023
KIMLEY-HORN PROJECT NO.:	118900036

This document, together with the concepts and designs presented herein, is intended only for the specific purpose and client for which it was prepared. Reuse of and improper reliance on this document without written authorization and adaptation by Kimley-Horn and Associates, Inc. shall be without liability to Kimley-Horn and Associates, Inc.

This document, together with the concepts and designs presented herein, as an instrument of service, is intended only for the specific purpose and client for which it was prepared. Reuse of and improper reliance on this document without written authorization and adaptation by Kimley-Horn and Associates, Inc. shall be without liability to Kimley-Horn and Associates, Inc.

CONFIGURATION A

22' OF PAVEMENT



NAWAKWA TRAIL
TRAFFIC CALMING
NASHVILLE, TN



DESIGNED BY:	ALB
DRAWN BY:	DJG
CHECKED BY:	NDOT
DATE:	8/29/2023
KIMLEY-HORN PROJECT NO.:	118800036

DETAIL

SHEET NUMBER
04