

ESTIMATED QUANTITIES

SPEED CUSHIONS

6' X 10.5' SPEED CUSHION WITH ONE ARROW	8
6' X 10.5' SPEED CUSHION WITH TWO ARROWS	4

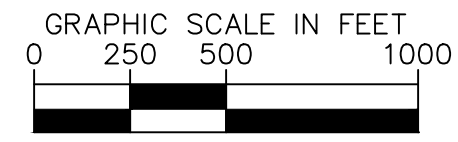
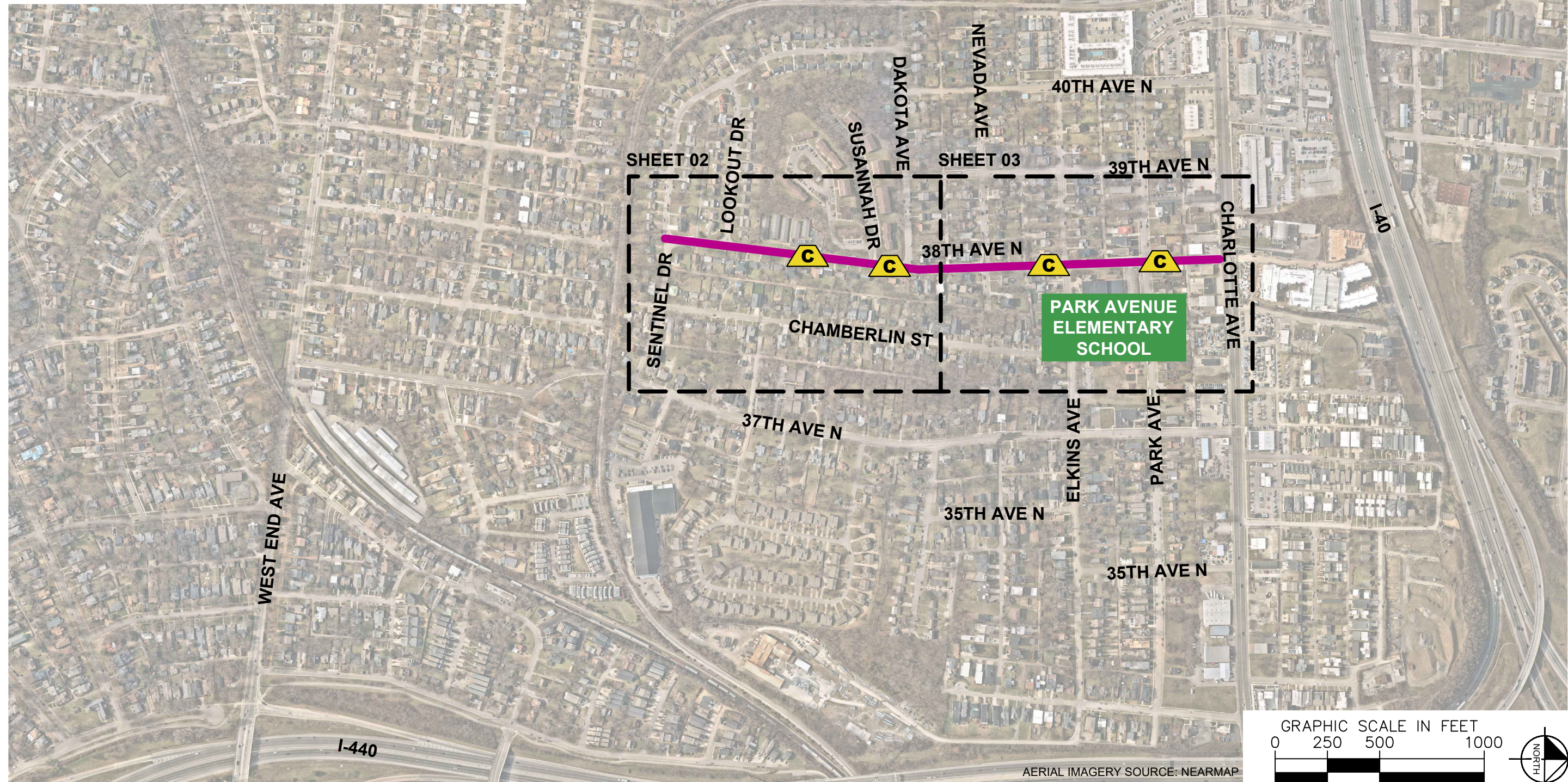
SIGNING

W17-1 (VAR.) "SPEED CUSHION" SIGN (30" X 30")	8
W13-1P "20 M.P.H" SIGN (18" X 18")	8

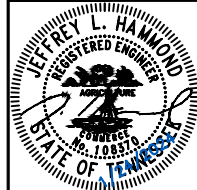
NOTE: ALL LOCATIONS ARE REFERENCED FROM CENTERLINE OF DRIVEWAYS OR OTHER LANDMARKS TO THE CENTER OF SPEED CUSHIONS OR SIGNS.

LEGEND

-  LIMITS OF TRAFFIC CALMING PROJECT
-  SPEED CUSHIONS



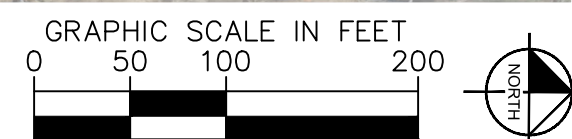
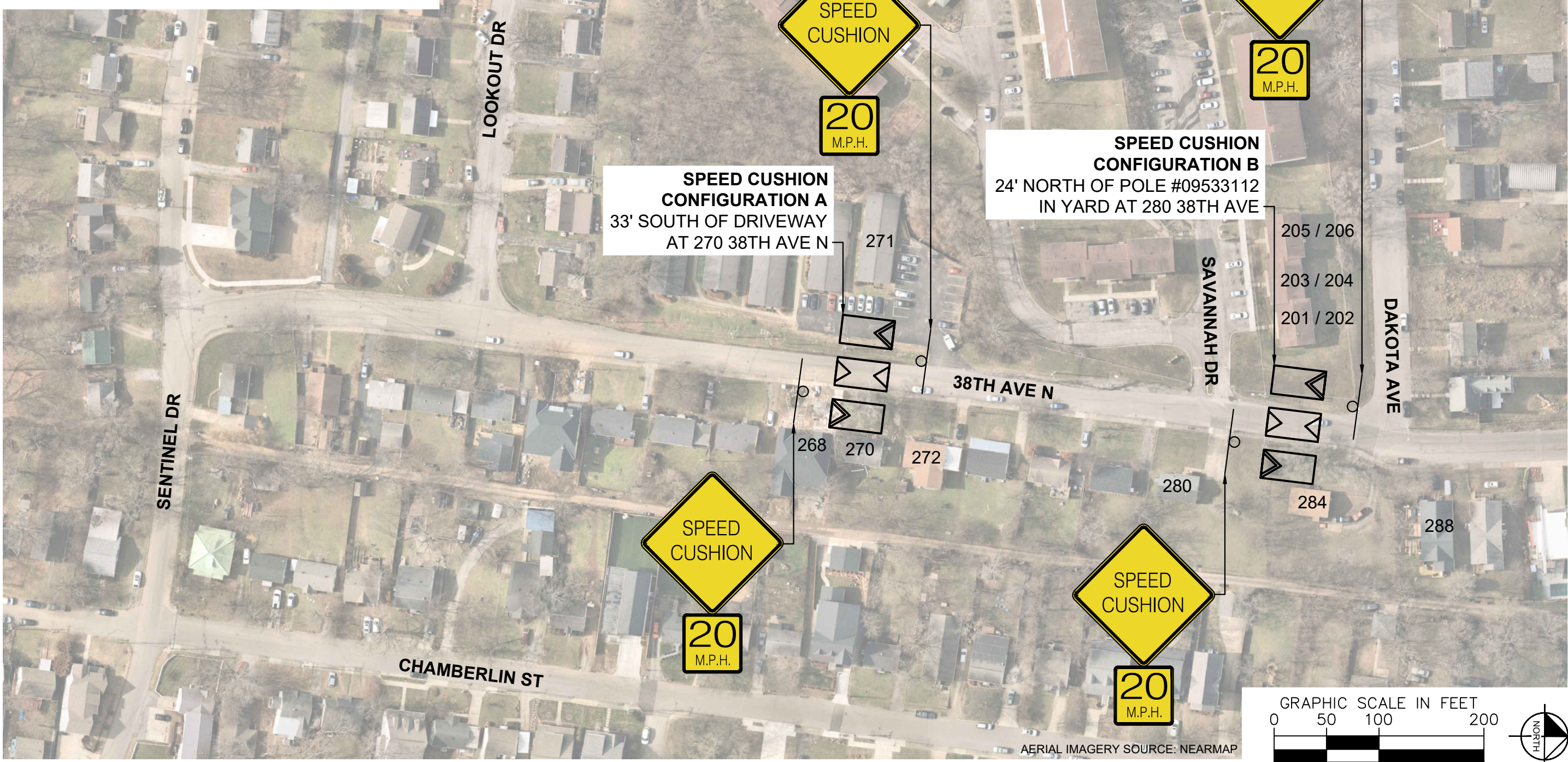
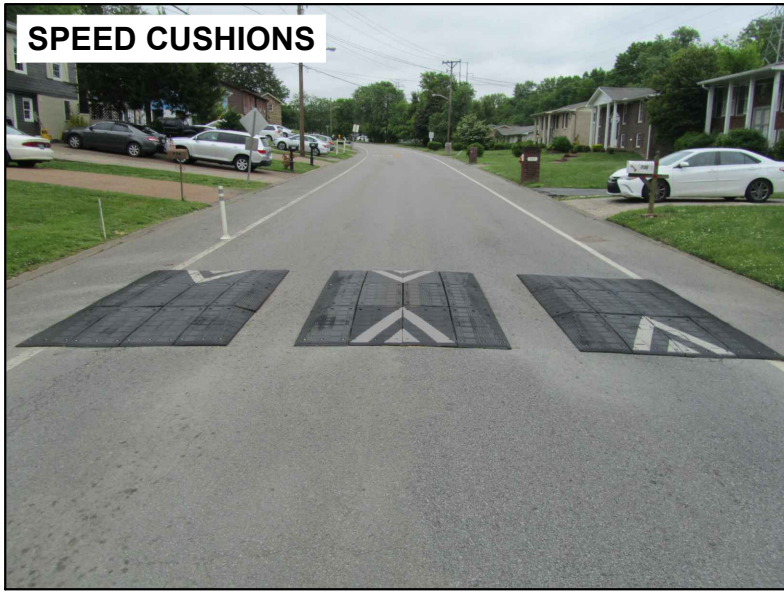
AERIAL IMAGERY SOURCE: NEARMAP



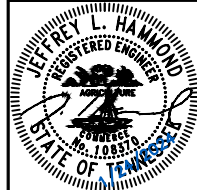
DESIGNED BY:	JLH
DRAWN BY:	DSW
CHECKED BY:	NDOT
DATE:	1/24/2024
KIMLEY-HORN PROJECT NO.:	118800046

KEY
SHEET NUMBER
01

This document, together with the concepts and designs presented herein, is intended only for the specific purpose and client for which it was prepared. Reuse of and improper reliance on this document without written authorization and adaptation by Kimley-Horn and Associates, Inc. shall be without liability to Kimley-Horn and Associates, Inc.

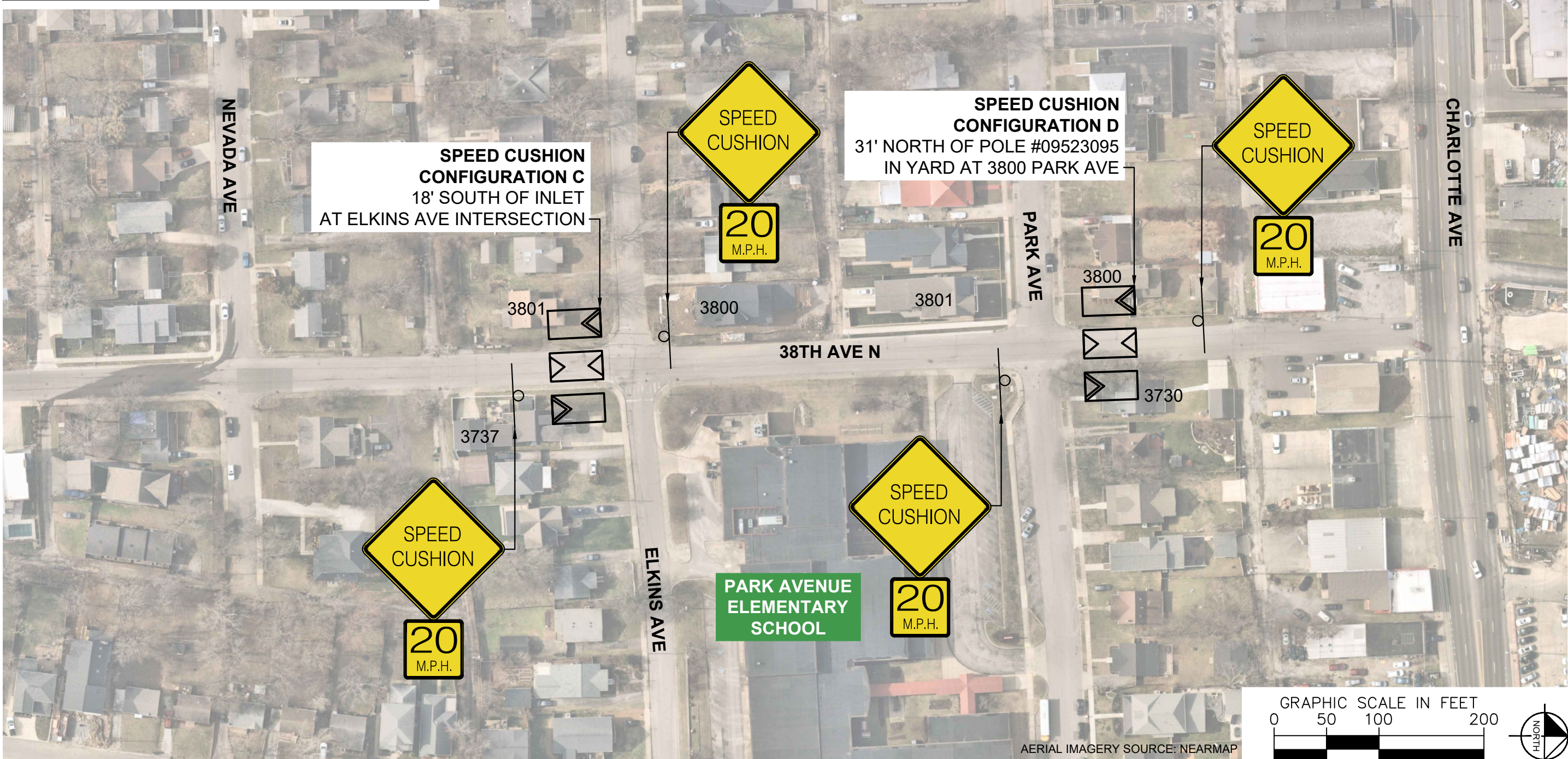


AERIAL IMAGERY SOURCE: NEARMAP



DESIGNED BY:	JLH
DRAWN BY:	DSW
CHECKED BY:	NDOT
DATE:	1/24/2024
KIMLEY-HORN PROJECT NO. 118900046	

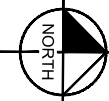
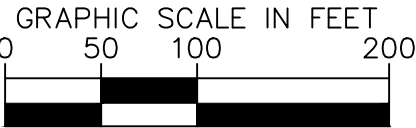
This document, together with the concepts and designs presented herein, is intended only for the specific purpose and client for which it was prepared. Reuse of and improper reliance on this document without written authorization and adaptation by Kimley-Horn and Associates, Inc. shall be without liability to Kimley-Horn and Associates, Inc.



SPEED CUSHION CONFIGURATION C
18' SOUTH OF INLET
AT ELKINS AVE INTERSECTION

SPEED CUSHION CONFIGURATION D
31' NORTH OF POLE #09523095
IN YARD AT 3800 PARK AVE

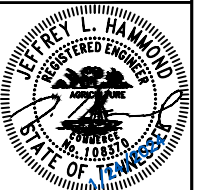
**PARK AVENUE
ELEMENTARY
SCHOOL**



AERIAL IMAGERY SOURCE: NEARMAP

NDOT

**38TH AVE N
TRAFFIC CALMING**
NASHVILLE, TN

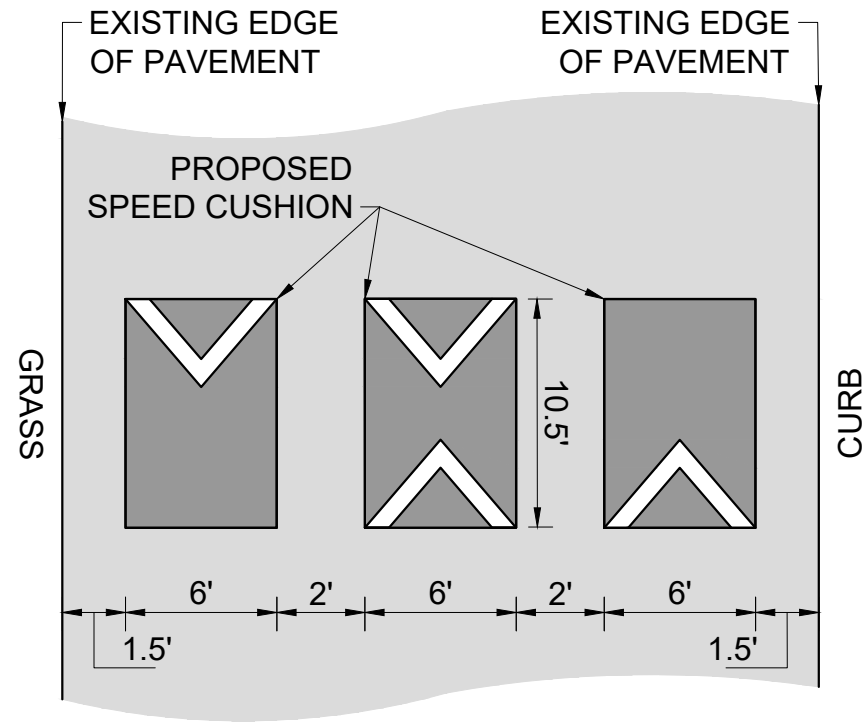


DESIGNED BY:	JLH
DRAWN BY:	DSW
CHECKED BY:	NDOT
DATE:	1/24/2024
KIMLEY-HORN PROJECT NO.:	118900046

CONCEPT
SHEET NUMBER
03

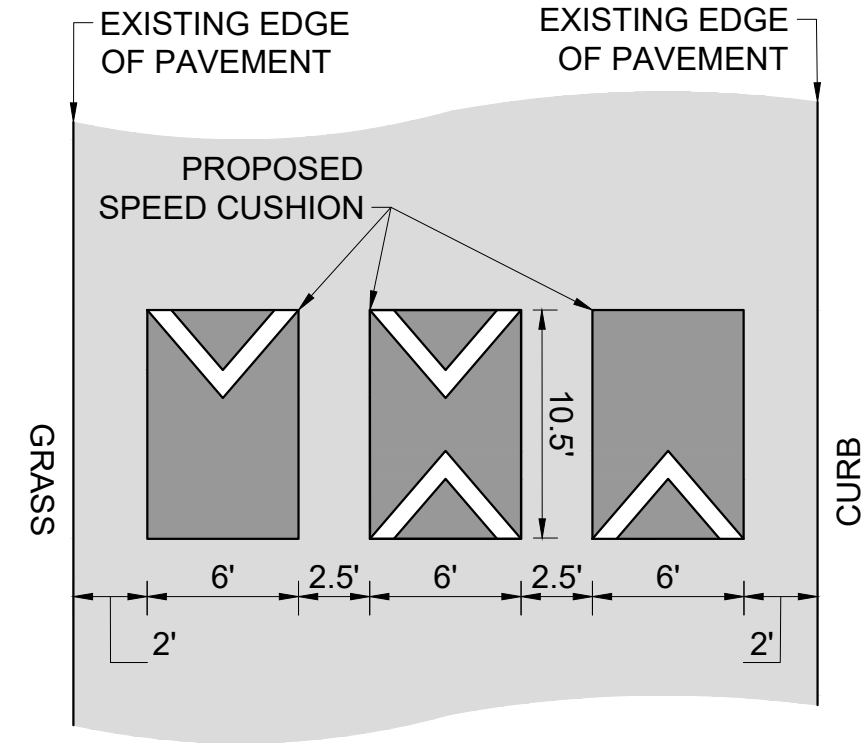
CONFIGURATION A

25' OF PAVEMENT



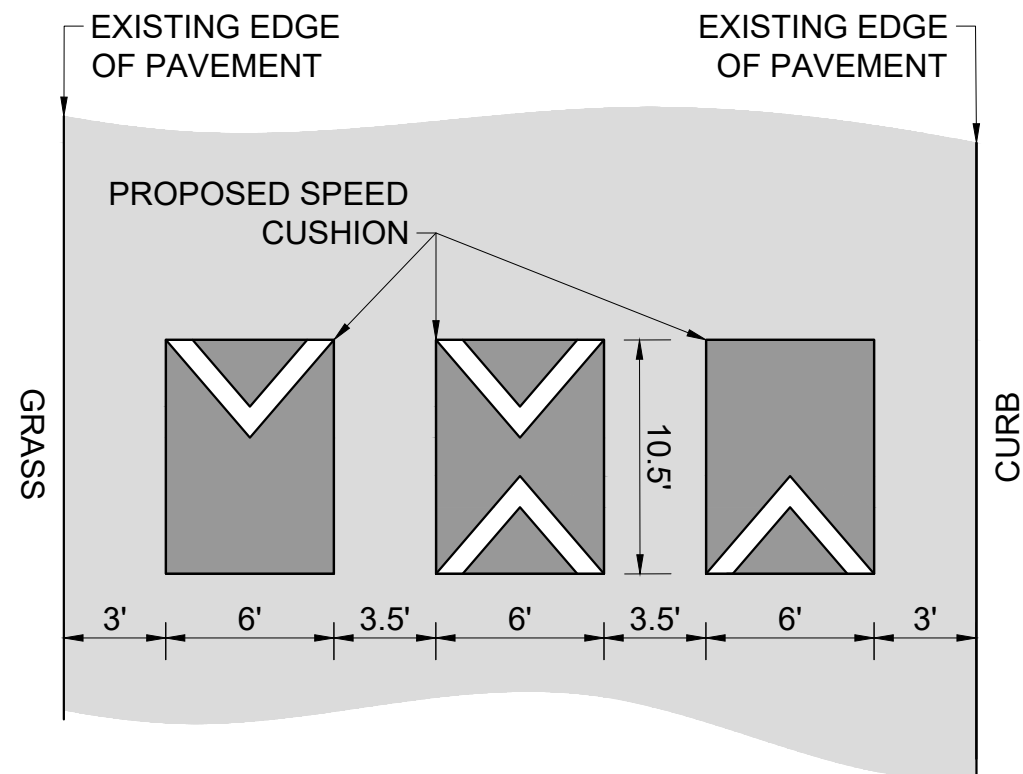
CONFIGURATION B

27' OF PAVEMENT



CONFIGURATION C

31' OF PAVEMENT



CONFIGURATION D

32' OF PAVEMENT

