

### ESTIMATED QUANTITIES

#### SPEED CUSHIONS

6' X 10.5' SPEED CUSHION WITH ONE ARROW	12
---	----

#### SIGNING

W17-1 (VAR.) "SPEED CUSHION" SIGN (30" X 30")	8
W17-1 (VAR.) "SPEED CUSHIONS AHEAD" SIGN (30" X 30")	2
W13-1P "20 M.P.H" SIGN (18" X 18")	10

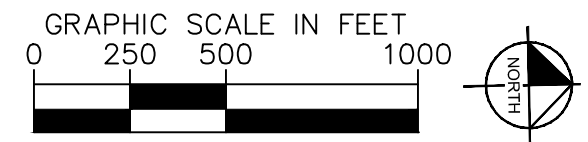
**NOTE:** ALL LOCATIONS ARE REFERENCED FROM CENTERLINE OF DRIVEWAYS OR OTHER LANDMARKS TO THE CENTER OF SPEED CUSHIONS OR SIGNS.

### LEGEND

-  LIMITS OF TRAFFIC CALMING PROJECT
-  SPEED CUSHIONS



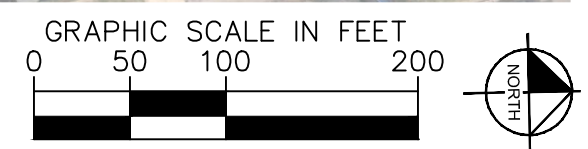
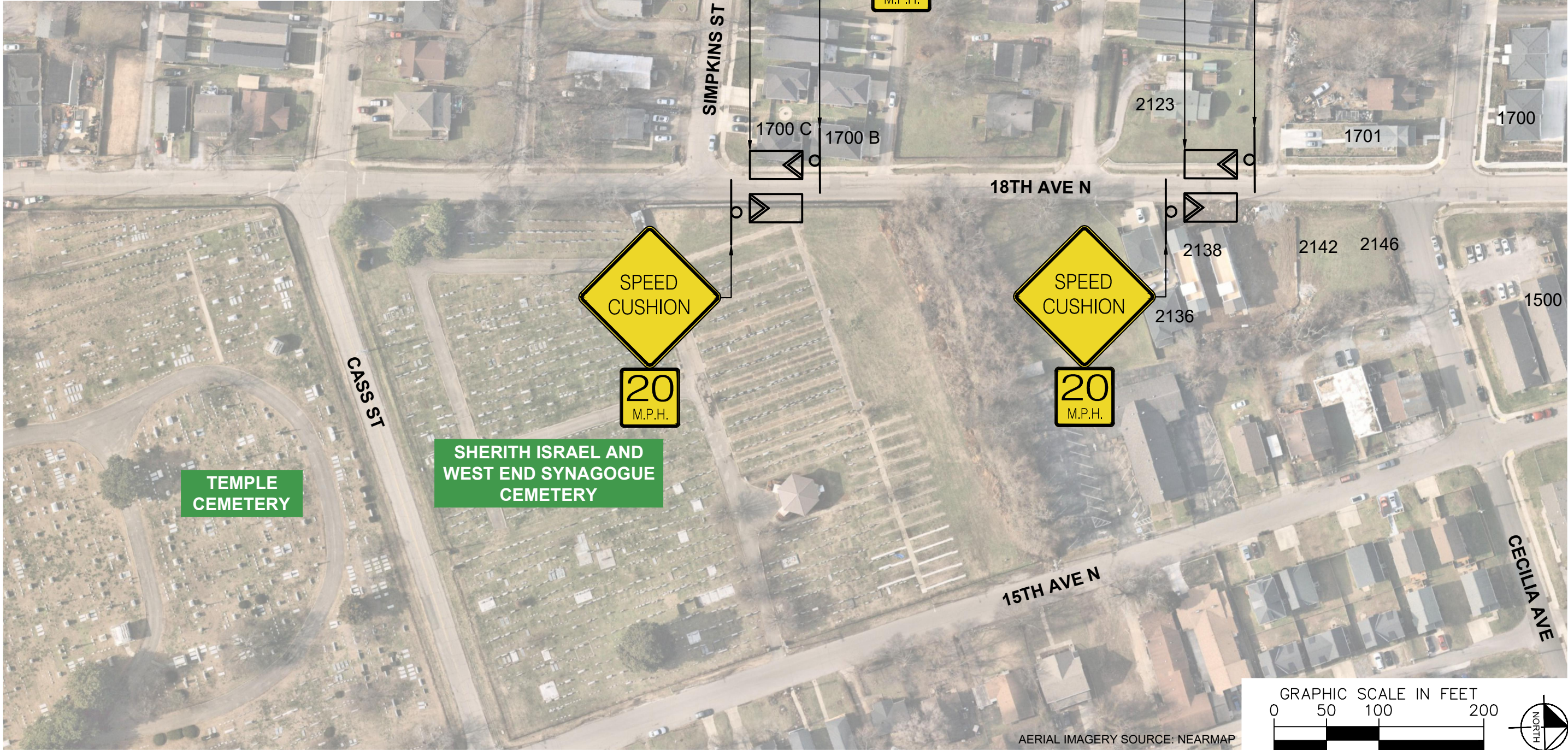
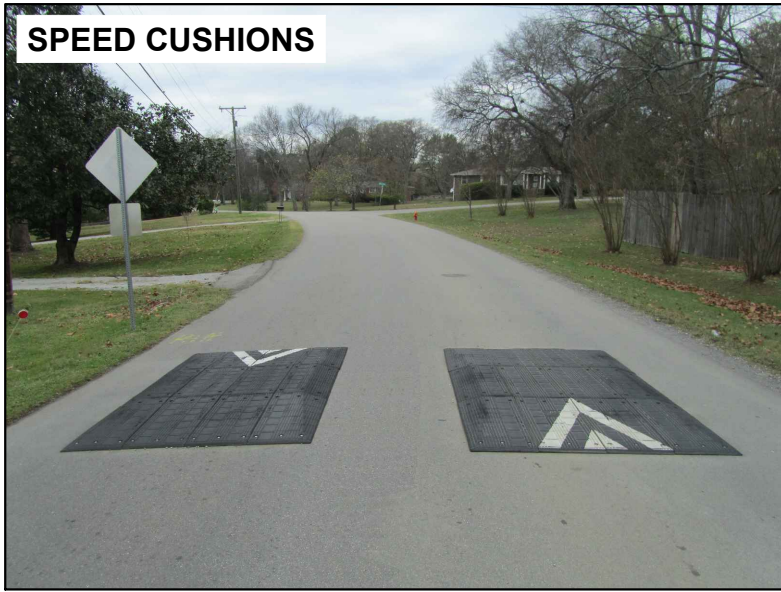
DESIGNED BY:	JLH
DRAWN BY:	DKW
CHECKED BY:	NDOT
DATE:	2/16/2024
KIMLEY-HORN PROJECT NO.	118900046



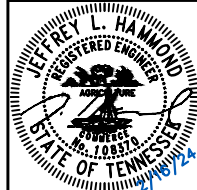
<b>KEY</b>
SHEET NUMBER
<b>01</b>

This document, together with the concepts and designs presented herein, is intended only for the specific purpose and client for which it was prepared. Reuse of and improper reliance on this document without written authorization and adaptation by Kimley-Horn and Associates, Inc. shall be without liability to Kimley-Horn and Associates, Inc.

**SPEED CUSHIONS**



AERIAL IMAGERY SOURCE: NEARMAP



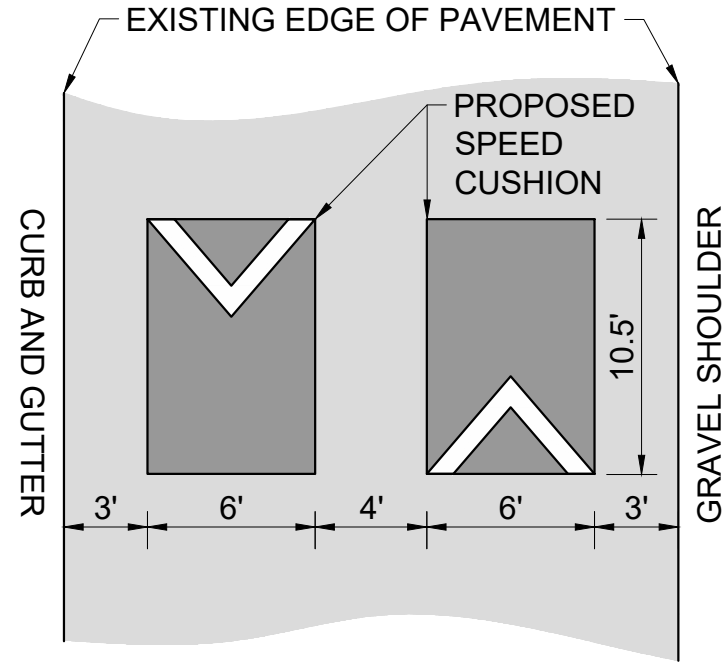
DESIGNED BY: JLH  
DRAWN BY: DKW  
CHECKED BY: NDOT  
DATE: 2/16/2024  
KIMLEY-HORN PROJECT NO. 118900046

**CONCEPT**  
SHEET NUMBER  
**02**



This document, together with the concepts and designs presented herein, as an instrument of service, is intended only for the specific purpose and client for which it was prepared. Reuse of and improper reliance on this document without written authorization and adaptation by Kimley-Horn and Associates, Inc. shall be without liability to Kimley-Horn and Associates, Inc.

### CONFIGURATION A 22' OF PAVEMENT



18TH AVE N  
TRAFFIC CALMING  
NASHVILLE, TN



DESIGNED BY:	JLH
DRAWN BY:	DKW
CHECKED BY:	NDOT
DATE:	2/18/2024
KIMLEY-HORN PROJECT NO.	118800046

**DETAIL**

SHEET NUMBER  
**04**