

ESTIMATED QUANTITIES

SPEED CUSHIONS

6' X 14' SPEED CUSHION WITH ONE ARROW	18
---------------------------------------	----

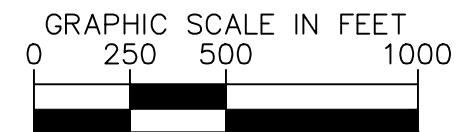
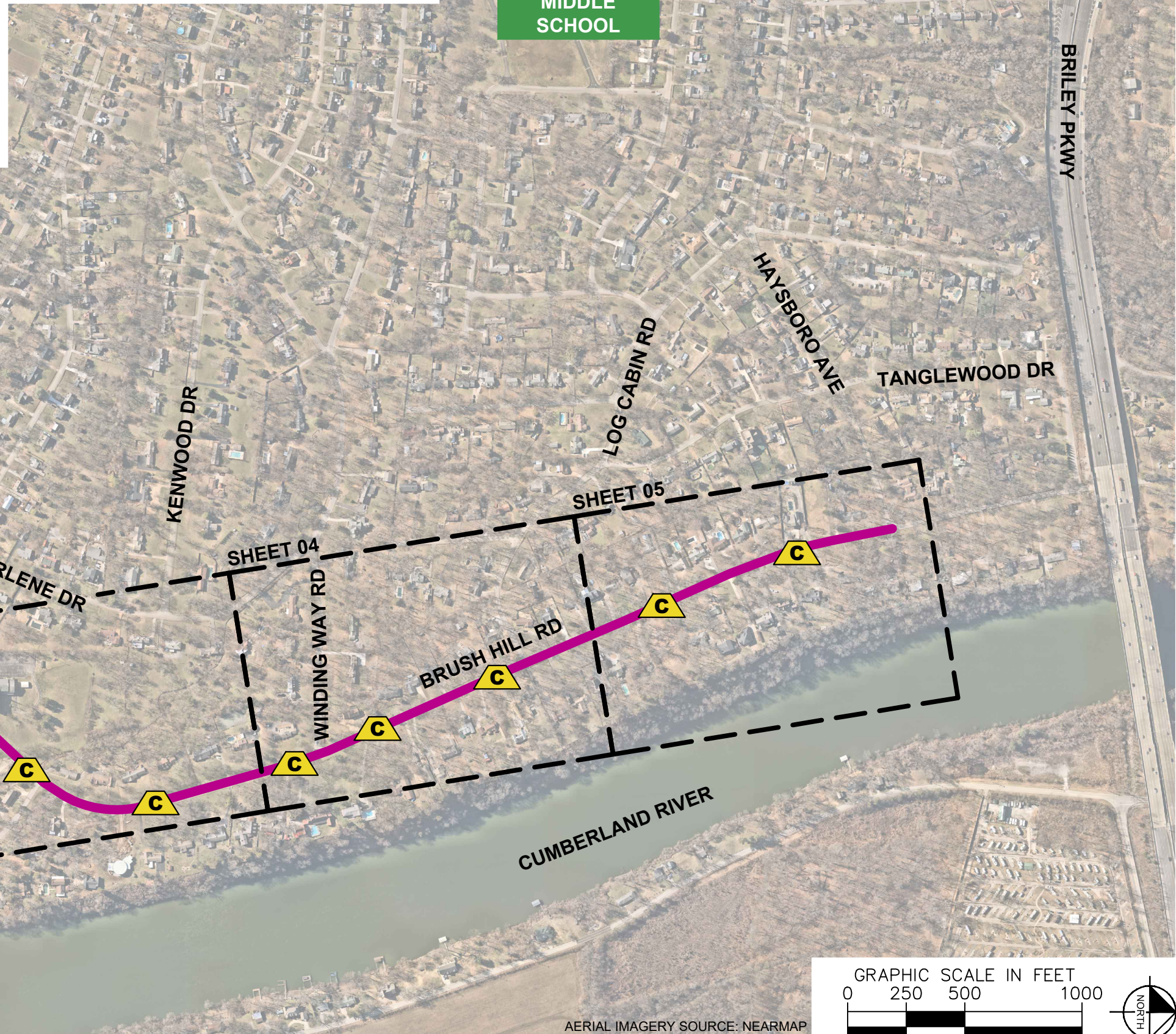
SIGNING

W17-1 (VAR.) "SPEED CUSHION" SIGN (30" X 30")	10
W17-1 (VAR.) "SPEED CUSHIONS AHEAD" SIGN (30" X 30")	4
W13-1P "20 M.P.H" SIGN (18" X 18")	14

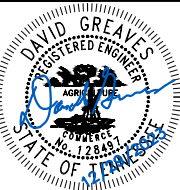
NOTE: ALL LOCATIONS ARE REFERENCED FROM CENTERLINE OF DRIVEWAYS OR OTHER LANDMARKS TO THE CENTER OF SPEED CUSHIONS OR SIGNS.

LEGEND

-  LIMITS OF TRAFFIC CALMING PROJECT
-  SPEED CUSHIONS



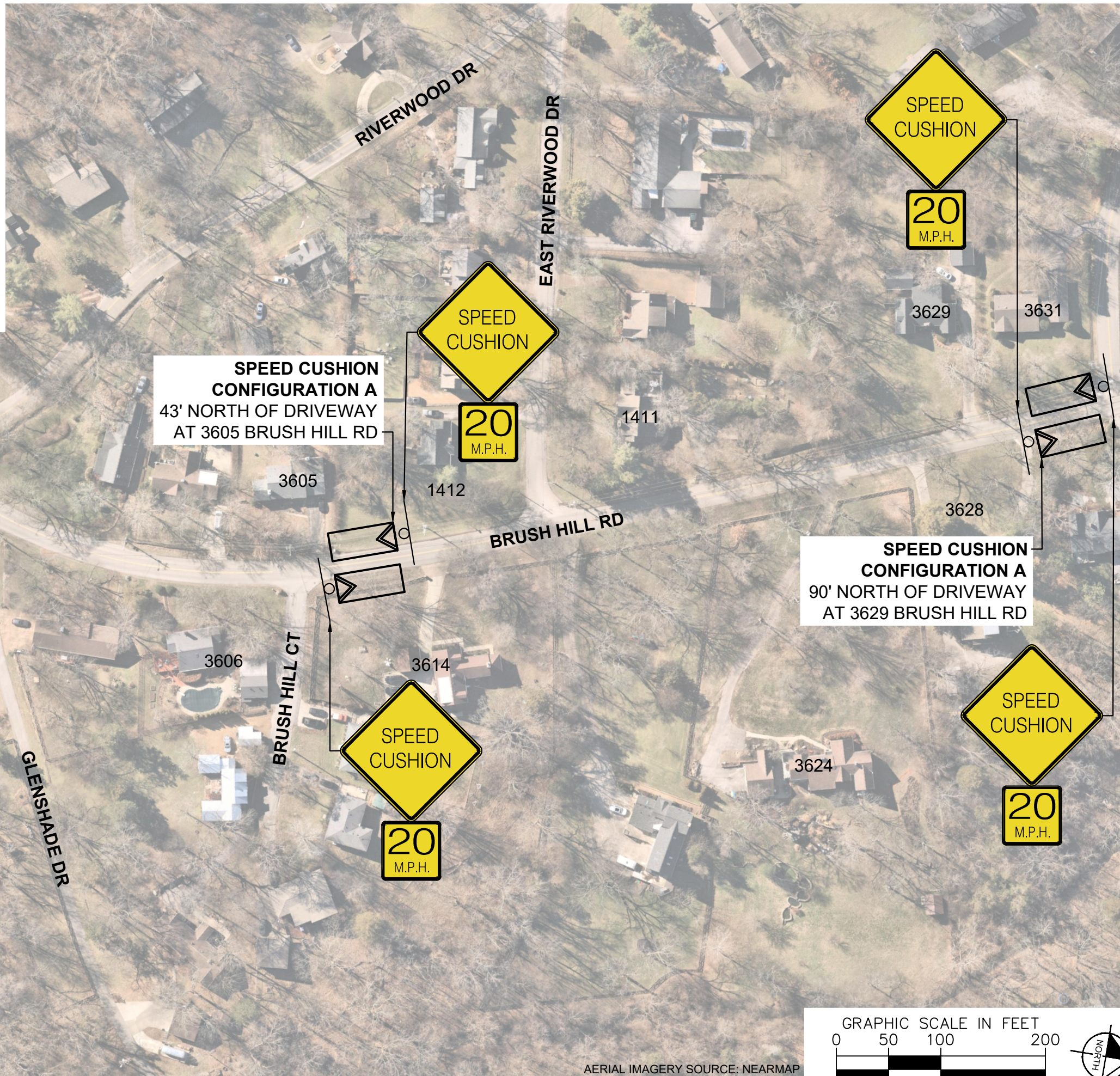
AERIAL IMAGERY SOURCE: NEARMAP



DESIGNED BY:	DJG
DRAWN BY:	TWR
CHECKED BY:	NDOT
DATE:	12/29/2023
KIMLEY-HORN PROJECT NO.	118900046

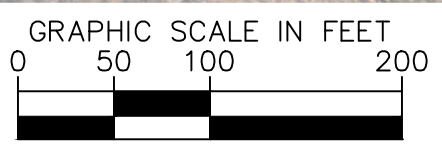
This document, together with the concepts and designs presented herein, is intended only for the specific purpose and client for which it was prepared. Reuse of and improper reliance on this document without written authorization and adaptation by Kimley-Horn and Associates, Inc. shall be without liability to Kimley-Horn and Associates, Inc.

SPEED CUSHIONS



SPEED CUSHION CONFIGURATION A
43' NORTH OF DRIVEWAY
AT 3605 BRUSH HILL RD

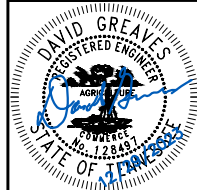
SPEED CUSHION CONFIGURATION A
90' NORTH OF DRIVEWAY
AT 3629 BRUSH HILL RD



AERIAL IMAGERY SOURCE: NEARMAP



BRUSH HILL ROAD
TRAFFIC CALMING
NASHVILLE, TN

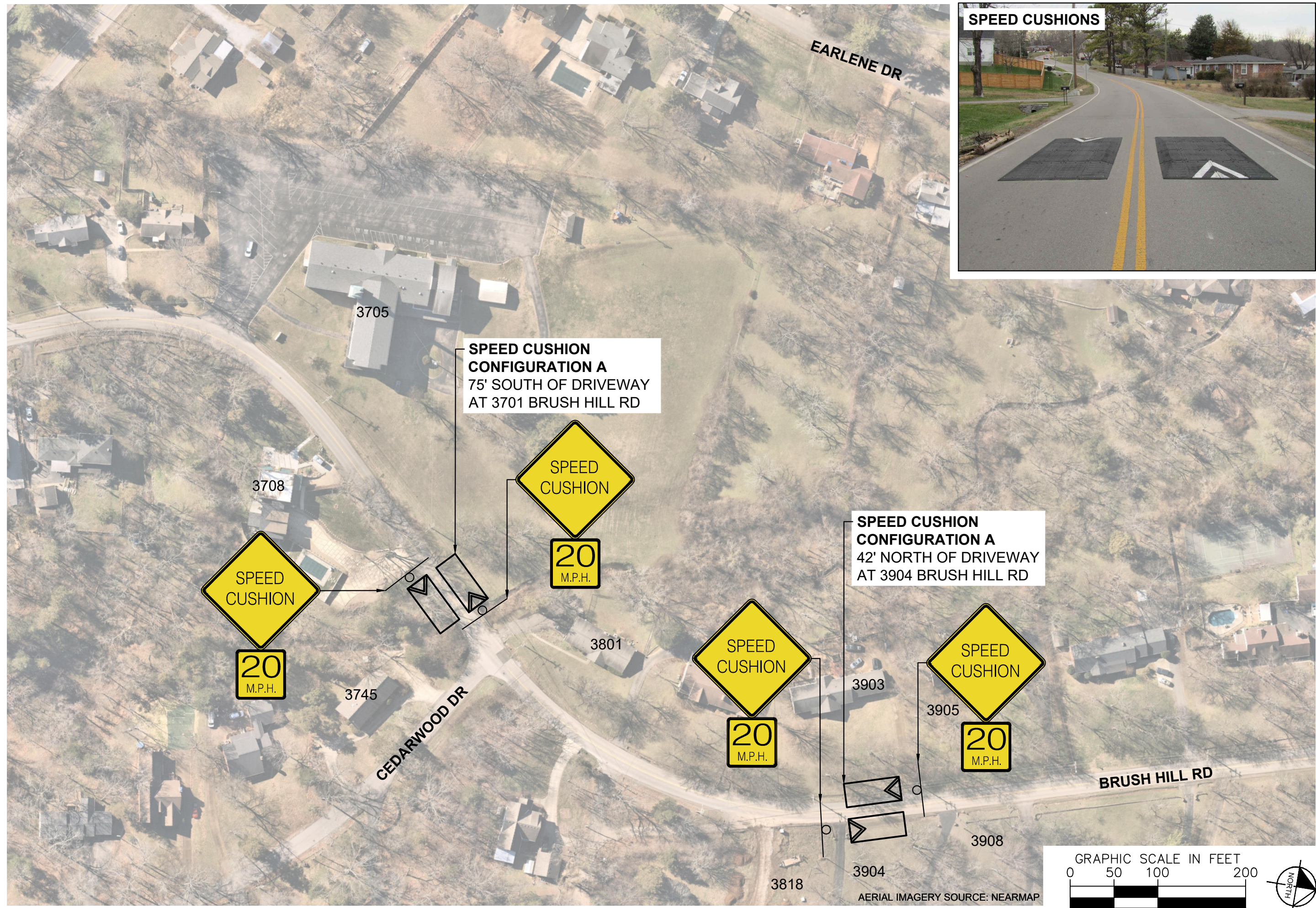


DESIGNED BY:	DJG
DRAWN BY:	TWR
CHECKED BY:	NDOT
DATE:	12/29/2023
KIMLEY-HORN PROJECT NO.:	11890046

CONCEPT
SHEET NUMBER
02

This document, together with the concepts and designs presented herein, is intended only for the specific purpose and client for which it was prepared. Reuse of and improper reliance on this document without written authorization and adaptation by Kimley-Horn and Associates, Inc. shall be without liability to Kimley-Horn and Associates, Inc.

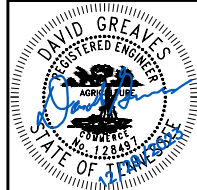
This document, together with the concepts and designs presented herein, is intended only for the specific purpose and client for which it was prepared. Reuse of and improper reliance on this document without written authorization and adaptation by Kimley-Horn and Associates, Inc. shall be without liability to Kimley-Horn and Associates, Inc.



SPEED CUSHIONS

NDOT

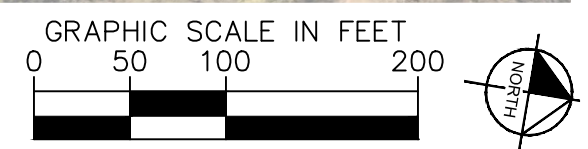
**BRUSH HILL ROAD
TRAFFIC CALMING**
NASHVILLE, TN



Kimley >> Horn

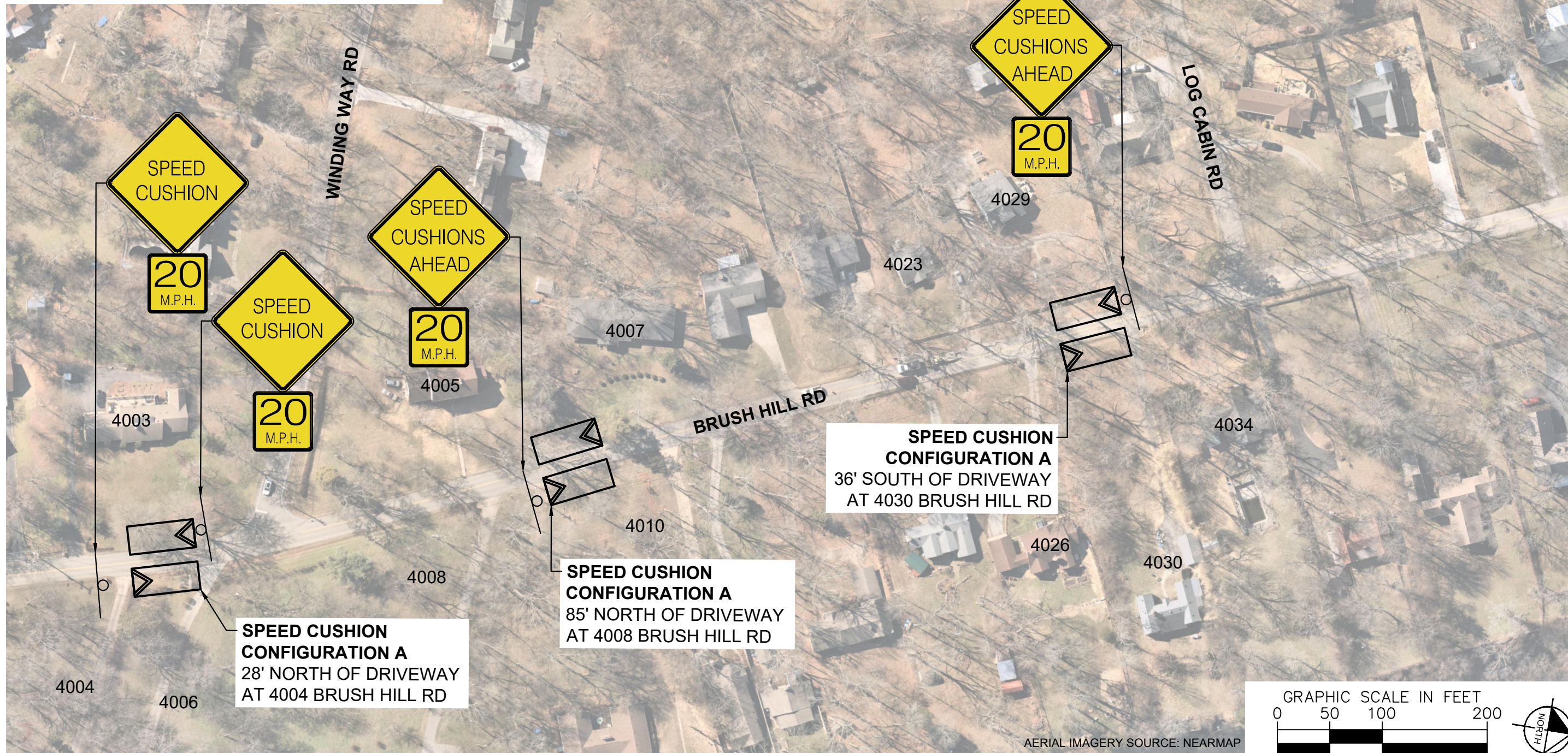
DESIGNED BY:	DJG
DRAWN BY:	TWR
CHECKED BY:	NDOT
DATE:	12/29/2023
KIMLEY-HORN PROJECT NO.:	118900046

CONCEPT
SHEET NUMBER
03

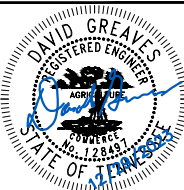
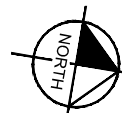
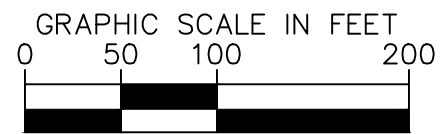


AERIAL IMAGERY SOURCE: NEARMAP

SPEED CUSHIONS



AERIAL IMAGERY SOURCE: NEARMAP



DESIGNED BY:	DJG
DRAWN BY:	TWR
CHECKED BY:	NDOT
DATE:	12/29/2023
KIMLEY-HORN PROJECT NO.	11890046

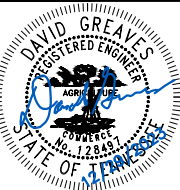
This document, together with the concepts and designs presented herein, is intended only for the specific purpose and client for which it was prepared. Reuse of and improper reliance on this document without written authorization and adaptation by Kimley-Horn and Associates, Inc. shall be without liability to Kimley-Horn and Associates, Inc.

This document, together with the concepts and designs presented herein, is intended only for the specific purpose and client for which it was prepared. Reuse of and improper reliance on this document without written authorization and adaptation by Kimley-Horn and Associates, Inc. shall be without liability to Kimley-Horn and Associates, Inc.



NDOT

**BRUSH HILL ROAD
TRAFFIC CALMING**
NASHVILLE, TN



Kimley >> Horn

DESIGNED BY: DJG
DRAWN BY: TWR
CHECKED BY: NDOT
DATE: 12/29/2023
KIMLEY-HORN PROJECT NO. 118900046

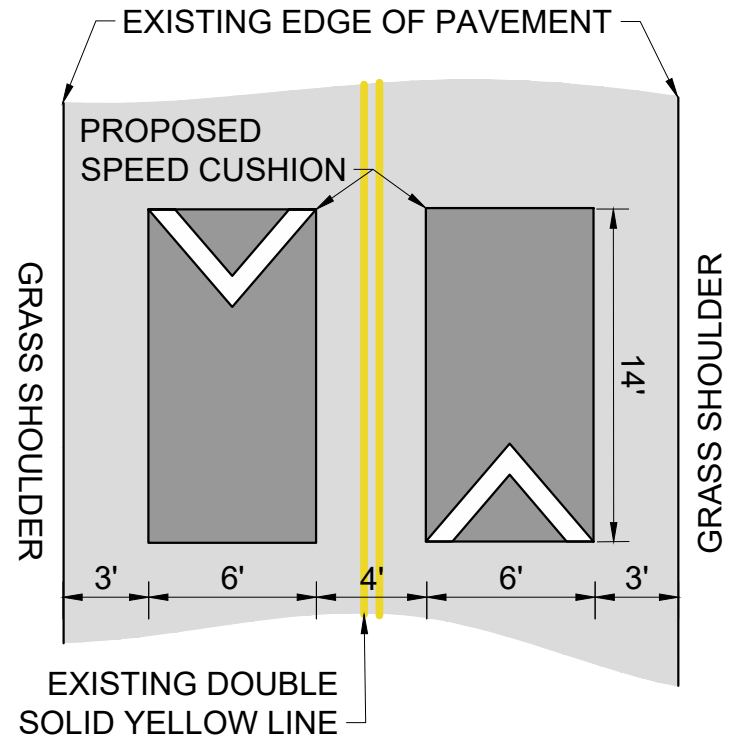
CONCEPT
SHEET NUMBER
05

AERIAL IMAGERY SOURCE: NEARMAP

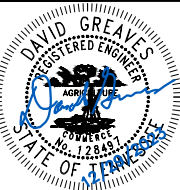
This document, together with the concepts and designs presented herein, as an instrument of service, is intended only for the specific purpose and client for which it was prepared. Reuse of and improper reliance on this document without written authorization and adaptation by Kimley-Horn and Associates, Inc. shall be without liability to Kimley-Horn and Associates, Inc.

CONFIGURATION A

22' OF PAVEMENT



BRUSH HILL ROAD
TRAFFIC CALMING
NASHVILLE, TN



DESIGNED BY:	DJG
DRAWN BY:	TWR
CHECKED BY:	NDOT
DATE:	12/29/2023
KIMLEY-HORN PROJECT NO.	118900046

DETAIL

SHEET NUMBER
06