

### ESTIMATED QUANTITIES

#### SPEED CUSHIONS

6' X 10.5' SPEED CUSHION WITH ONE ARROW	10
---	----

6' X 10.5' SPEED CUSHION WITH SSYL	1
------------------------------------	---

#### SIGNING

W17-1 (VAR.) "SPEED CUSHION" SIGN (30" X 30")	10
---	----

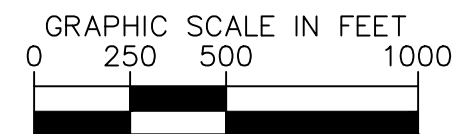
W13-1P "20 M.P.H" SIGN (18" X 18")	10
------------------------------------	----

**NOTE:** ALL LOCATIONS ARE REFERENCED FROM CENTERLINE OF DRIVEWAYS OR OTHER LANDMARKS TO THE CENTER OF SPEED CUSHIONS OR SIGNS.

### LEGEND

 LIMITS OF TRAFFIC CALMING PROJECT

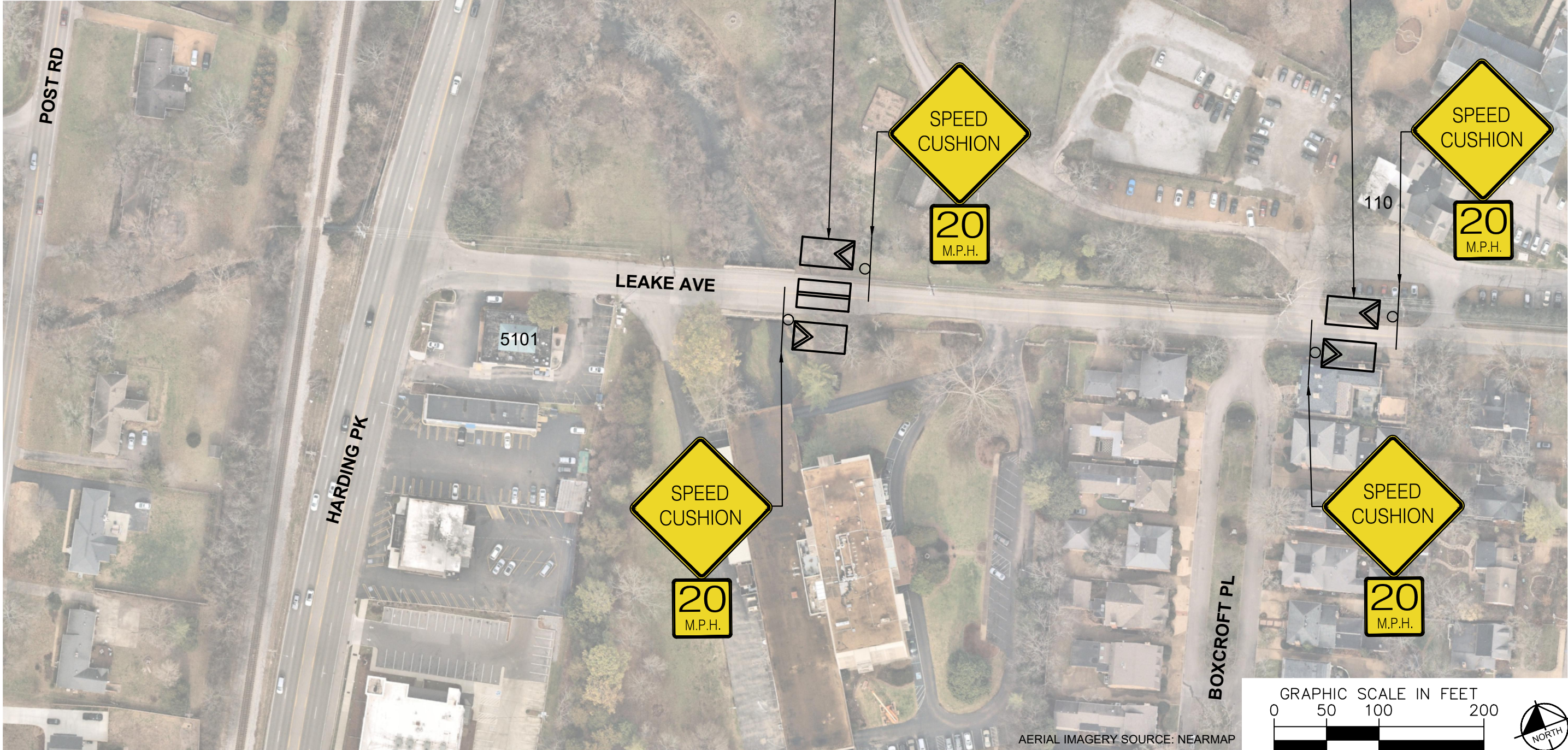
 SPEED CUSHIONS



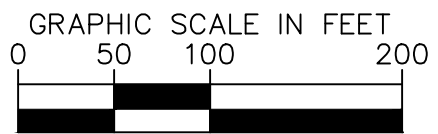
AERIAL IMAGERY SOURCE: NEARMAP

This document, together with the concepts and designs presented herein, is intended only for the specific purpose and client for which it was prepared. Reuse of and improper reliance on this document without written authorization and adaptation by Kimley-Horn and Associates, Inc. shall be without liability to Kimley-Horn and Associates, Inc.

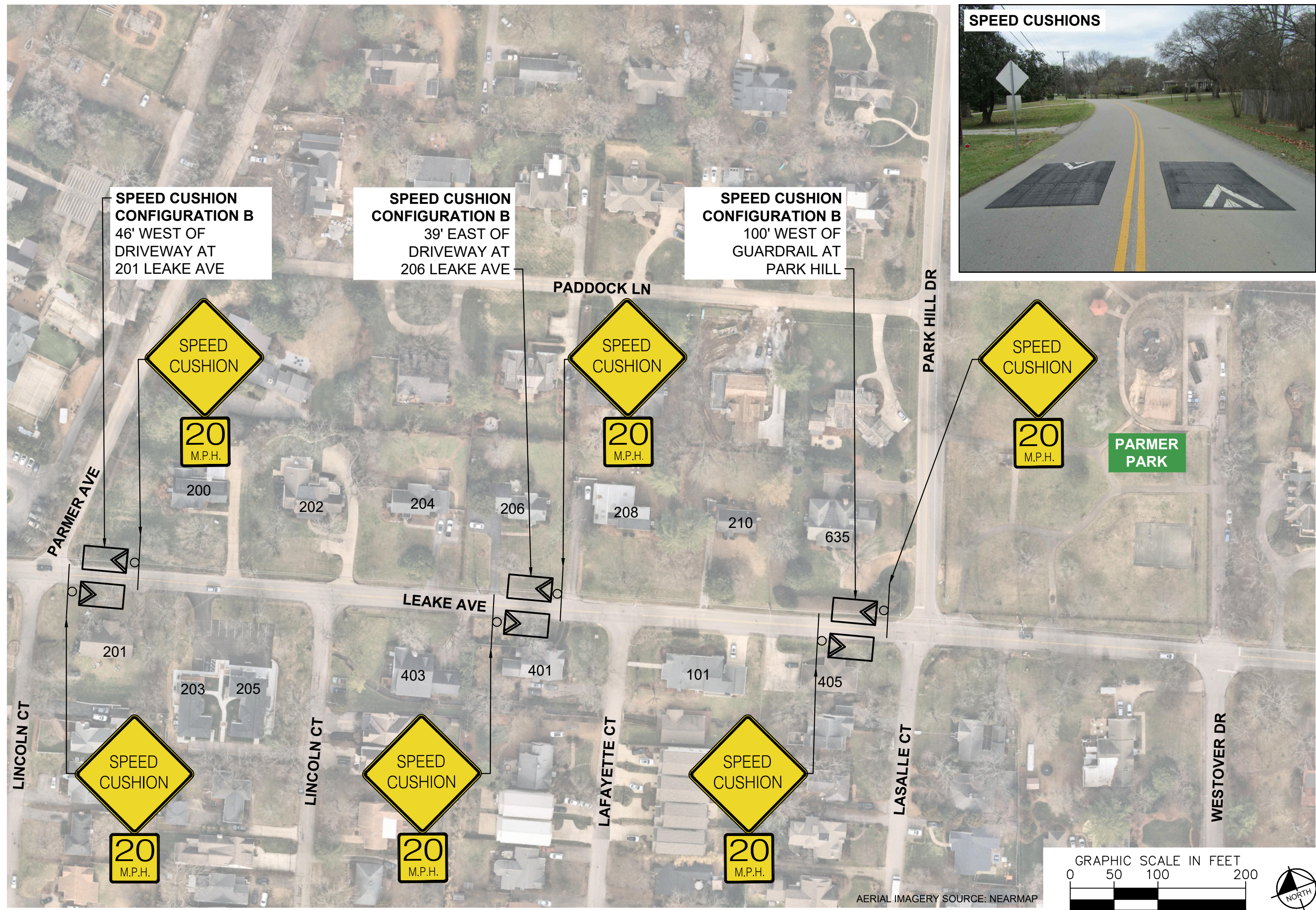
**SPEED CUSHIONS**



AERIAL IMAGERY SOURCE: NEARMAP



This document, together with the concepts and designs presented herein, is intended only for the specific purpose and client for which it was prepared. Reuse of and improper reliance on this document without written authorization and adaptation by KIMLEY-HORN and Associates, Inc. shall be without liability to KIMLEY-HORN and Associates, Inc.



SPEED CUSHIONS

**NDOT**

LEAKE AVENUE  
TRAFFIC CALMING  
NASHVILLE, TN

DRAFT  
PRELIMINARY  
PLANS  
FOR REVIEW ONLY

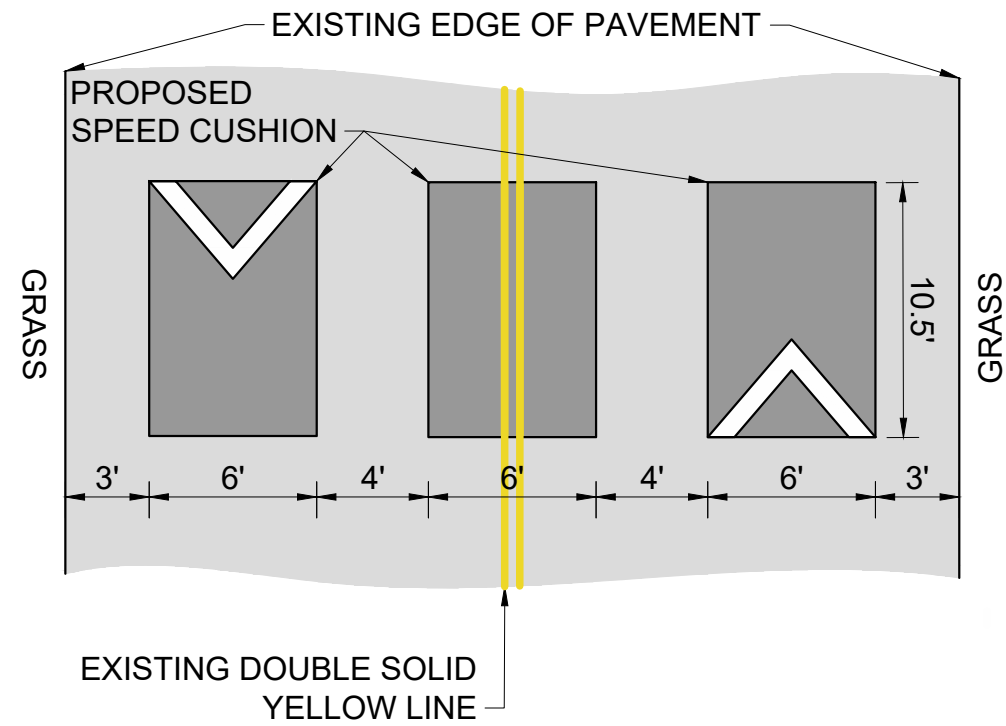


DESIGNED BY: JLH  
DRAWN BY: JCB  
CHECKED BY: NDOT  
DATE: 2/29/2024  
KIMLEY-HORN PROJECT NO. 11880046

CONCEPT

SHEET NUMBER  
**03**

**CONFIGURATION A**  
32' OF PAVEMENT



**CONFIGURATION B**  
20' - 22' OF PAVEMENT

