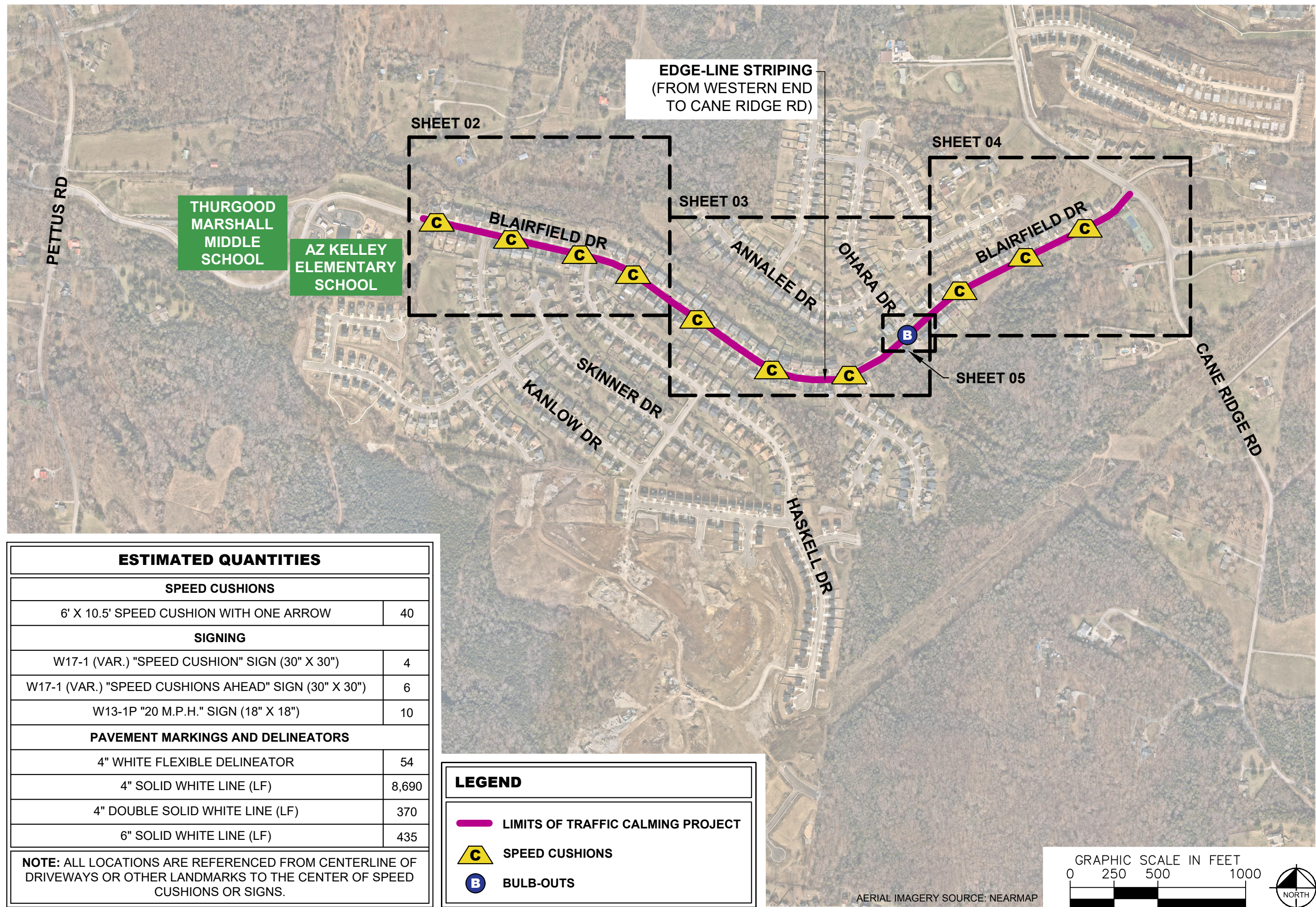


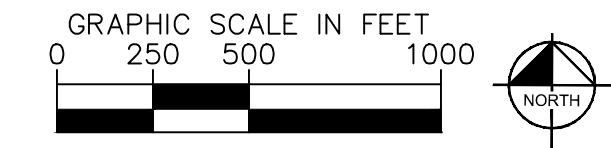
This document, together with the concepts and designs presented herein, is intended only for the specific purpose and client for which it was prepared. Reuse of and improper reliance on this document without written authorization and adaptation by Kimley-Horn and Associates, Inc. shall be without liability to Kimley-Horn and Associates, Inc.



ESTIMATED QUANTITIES	
SPEED CUSHIONS	
6' X 10.5' SPEED CUSHION WITH ONE ARROW	40
SIGNING	
W17-1 (VAR.) "SPEED CUSHION" SIGN (30" X 30")	4
W17-1 (VAR.) "SPEED CUSHIONS AHEAD" SIGN (30" X 30")	6
W13-1P "20 M.P.H." SIGN (18" X 18")	10
PAVEMENT MARKINGS AND DELINEATORS	
4" WHITE FLEXIBLE DELINEATOR	54
4" SOLID WHITE LINE (LF)	8,690
4" DOUBLE SOLID WHITE LINE (LF)	370
6" SOLID WHITE LINE (LF)	435
NOTE: ALL LOCATIONS ARE REFERENCED FROM CENTERLINE OF DRIVEWAYS OR OTHER LANDMARKS TO THE CENTER OF SPEED CUSHIONS OR SIGNS.	

LEGEND

- LIMITS OF TRAFFIC CALMING PROJECT
- C** SPEED CUSHIONS
- B** BULB-OUTS



**BLAIRFIELD DRIVE
TRAFFIC CALMING**
NASHVILLE, TN

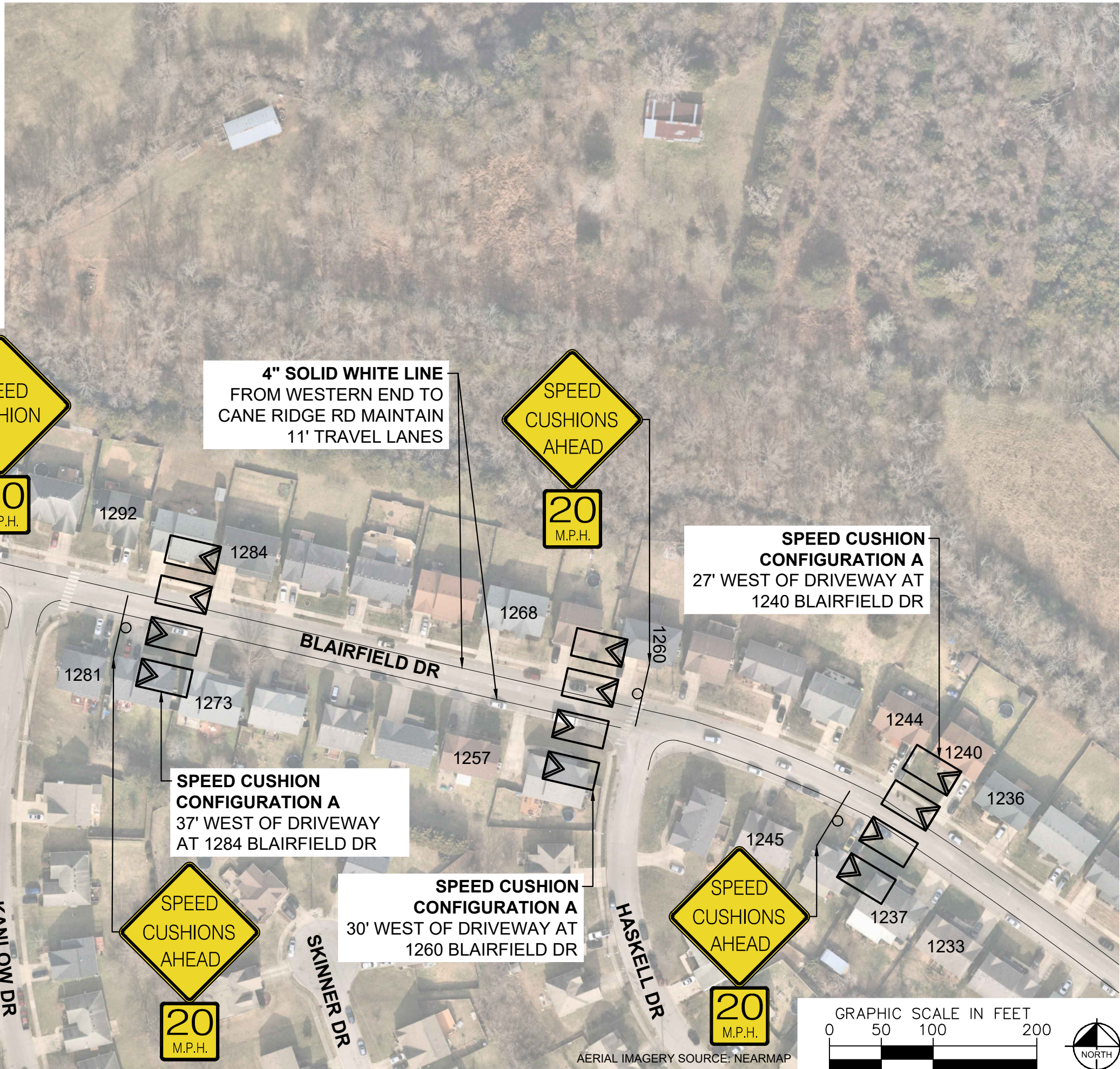


DESIGNED BY: RBW
 DRAWN BY: JTL
 CHECKED BY: NDOT
 DATE: 4/3/2024
 KIMLEY-HORN PROJECT NO. 118900046

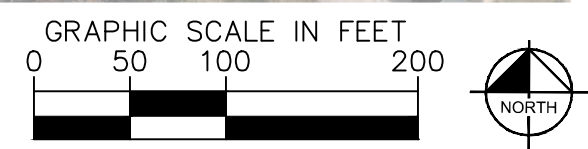
KEY

SHEET NUMBER
01

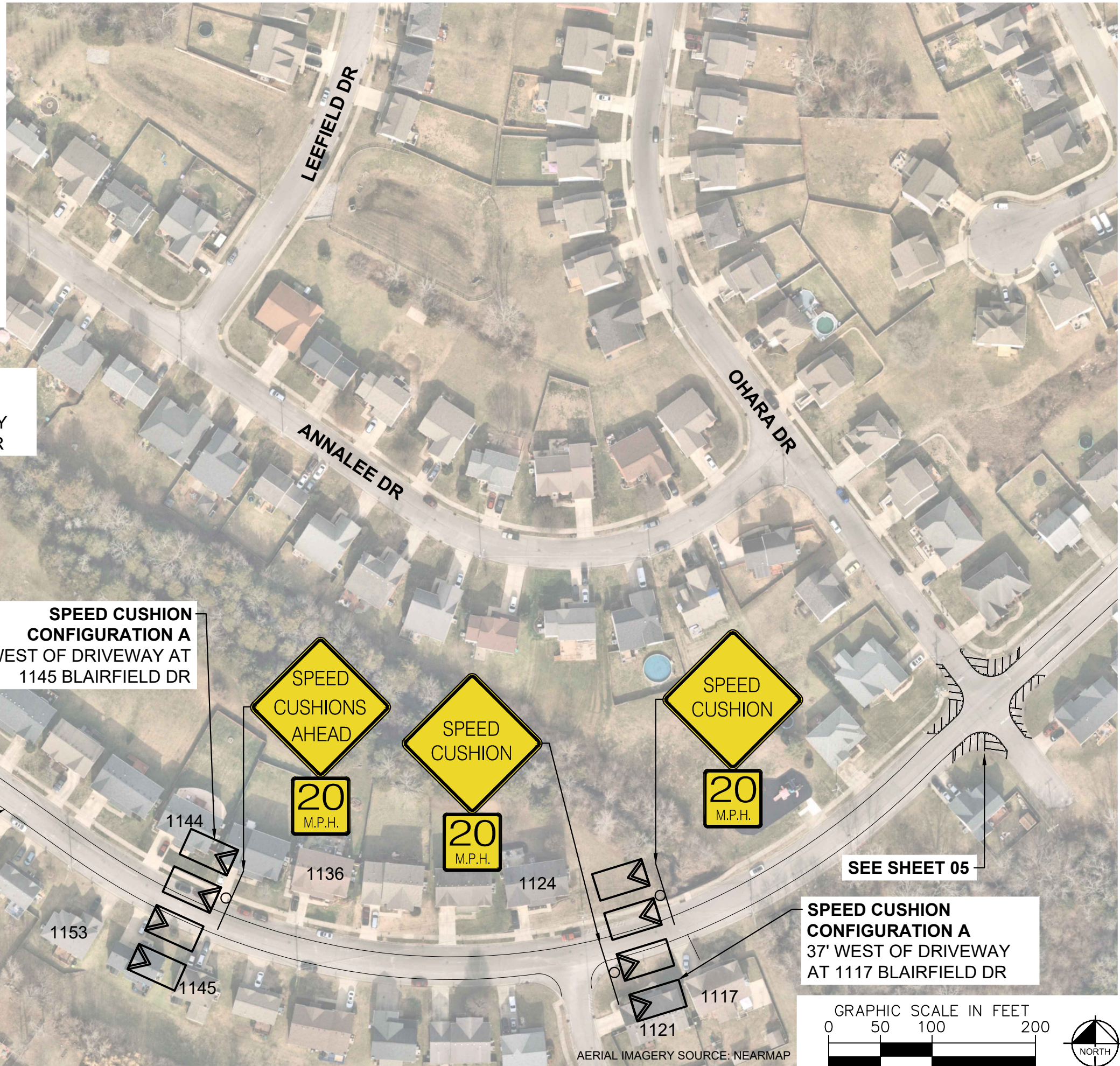
SPEED CUSHIONS



DESIGNED BY:	RBW
DRAWN BY:	JTL
CHECKED BY:	NDOT
DATE:	4/3/2024
KIMLEY-HORN PROJECT NO. 118900046	



SPEED CUSHIONS



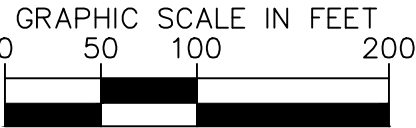
SPEED CUSHION CONFIGURATION A
33' WEST OF DRIVEWAY
AT 1212 BLAIRFIELD DR

SPEED CUSHION CONFIGURATION A
30' WEST OF DRIVEWAY
AT 1145 BLAIRFIELD DR

4" SOLID WHITE LINE
FROM WESTERN END TO CANE RIDGE RD MAINTAIN
11' TRAVEL LANES

SPEED CUSHION CONFIGURATION A
37' WEST OF DRIVEWAY
AT 1117 BLAIRFIELD DR

SEE SHEET 05



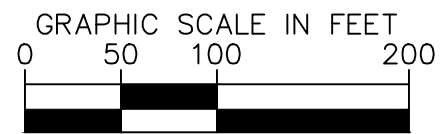
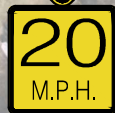
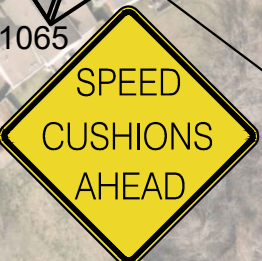
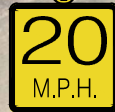
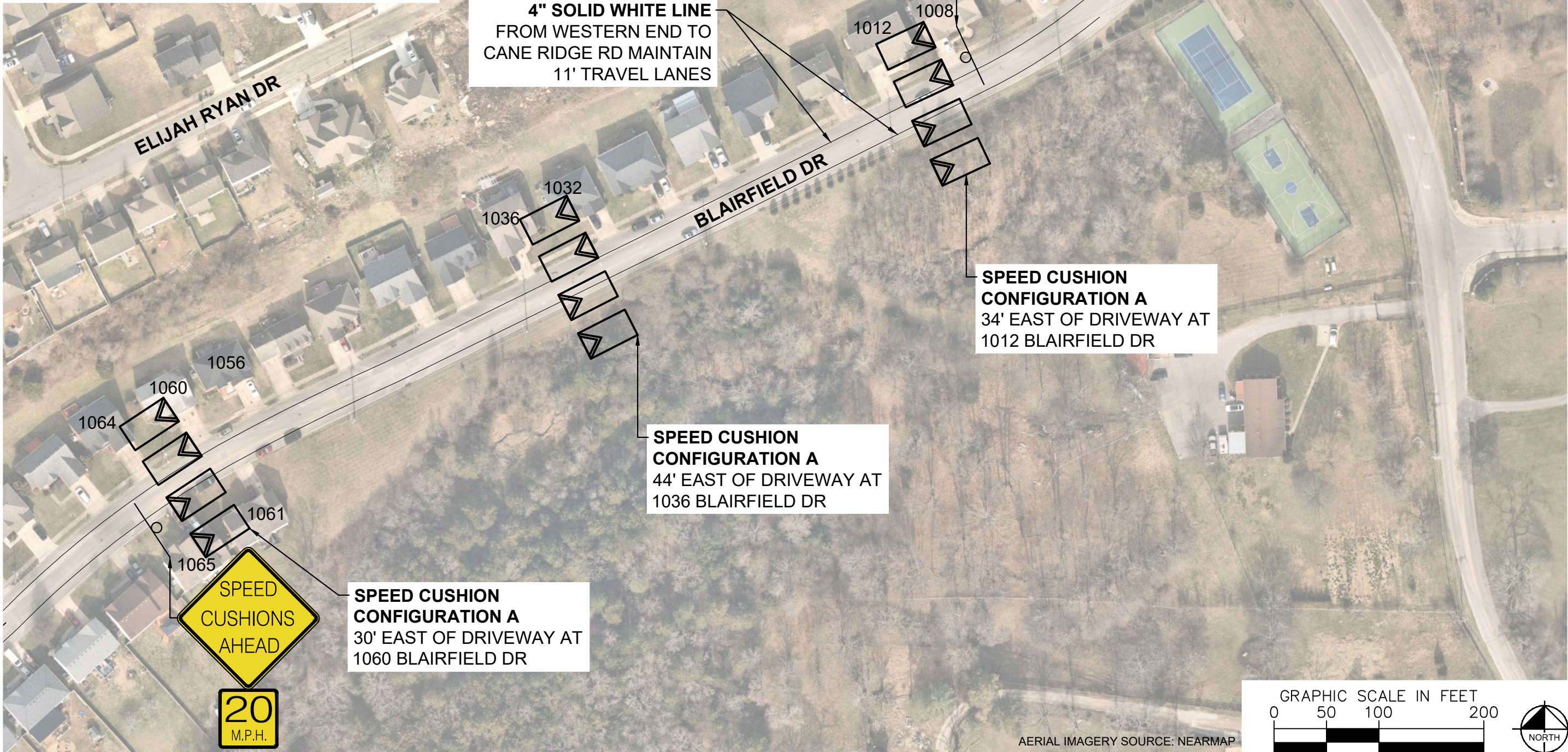
AERIAL IMAGERY SOURCE: NEARMAP



DESIGNED BY:	RBW
DRAWN BY:	JTL
CHECKED BY:	NDOT
DATE:	4/3/2024
KIMLEY-HORN PROJECT NO. 118900046	

Drawing name: K:\NSH_TPTO\118900046 - traffic calming\3 - design\08 - blairfield d\Design\CAD\plansheets\BLAIRFIELDDR-TrafficCalming.dwg 03-CONCEPT May 01, 2024 8:18am by: Jordan Lipsey

SPEED CUSHIONS



AERIAL IMAGERY SOURCE: NEARMAP

NDOT

BLAIRFIELD DRIVE
TRAFFIC CALMING
NASHVILLE, TN



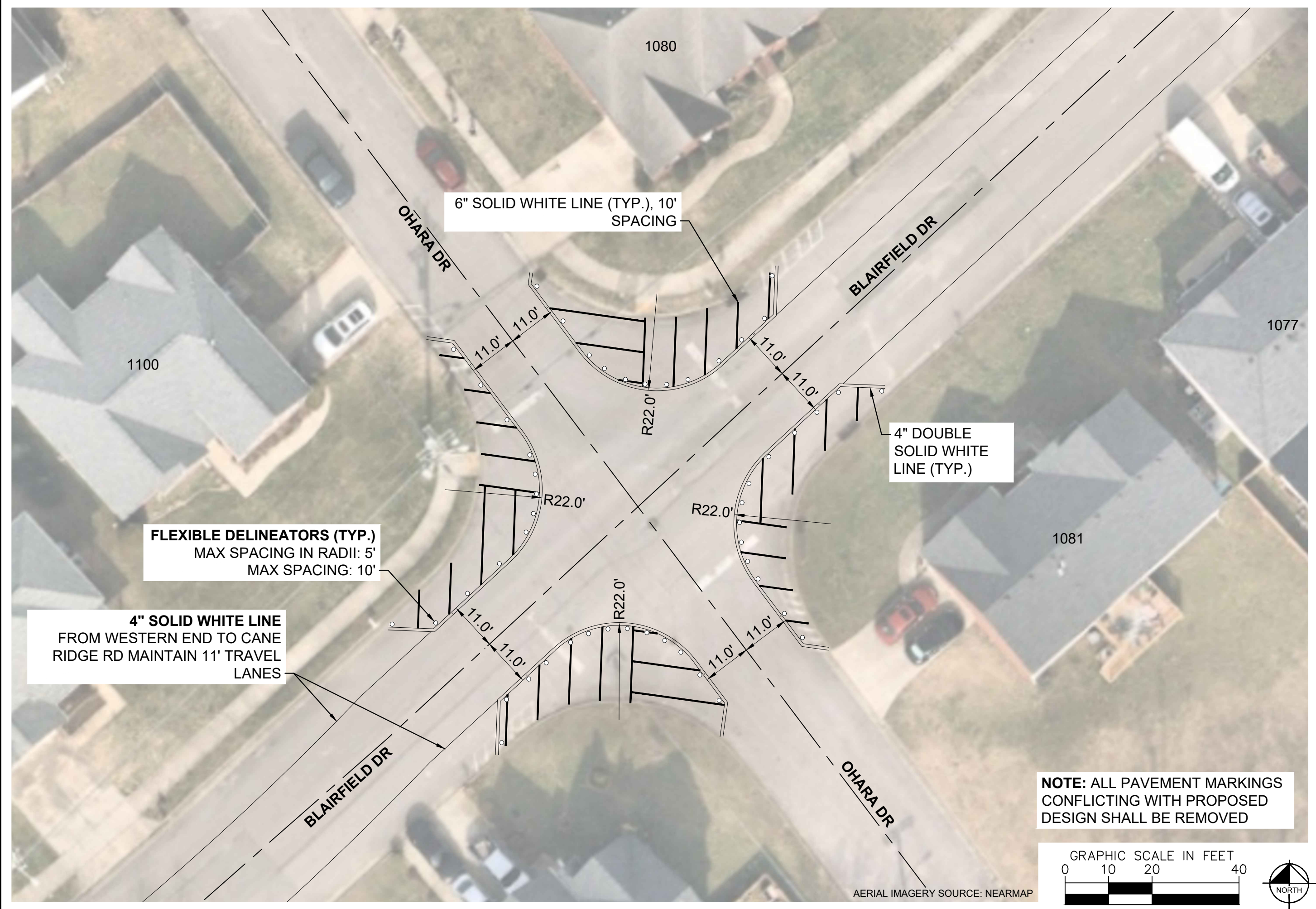
Kimley»Horn

DESIGNED BY:	RBW
DRAWN BY:	JTL
CHECKED BY:	NDOT
DATE:	4/3/2024
KIMLEY-HORN PROJECT NO. 118900046	

CONCEPT

SHEET NUMBER
04

This document, together with the concepts and designs presented herein, is intended only for the specific purpose and client for which it was prepared. Reuse of and improper reliance on this document without written authorization and adaptation by Kimley-Horn and Associates, Inc. shall be without liability to Kimley-Horn and Associates, Inc.



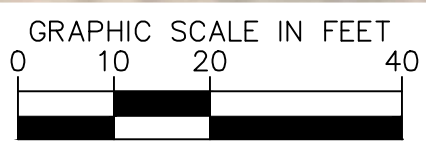
6" SOLID WHITE LINE (TYP.), 10' SPACING

4" DOUBLE SOLID WHITE LINE (TYP.)

FLEXIBLE DELINEATORS (TYP.)
MAX SPACING IN RADII: 5'
MAX SPACING: 10'

4" SOLID WHITE LINE
FROM WESTERN END TO CANE
RIDGE RD MAINTAIN 11' TRAVEL
LANES

NOTE: ALL PAVEMENT MARKINGS
CONFLICTING WITH PROPOSED
DESIGN SHALL BE REMOVED



AERIAL IMAGERY SOURCE: NEARMAP

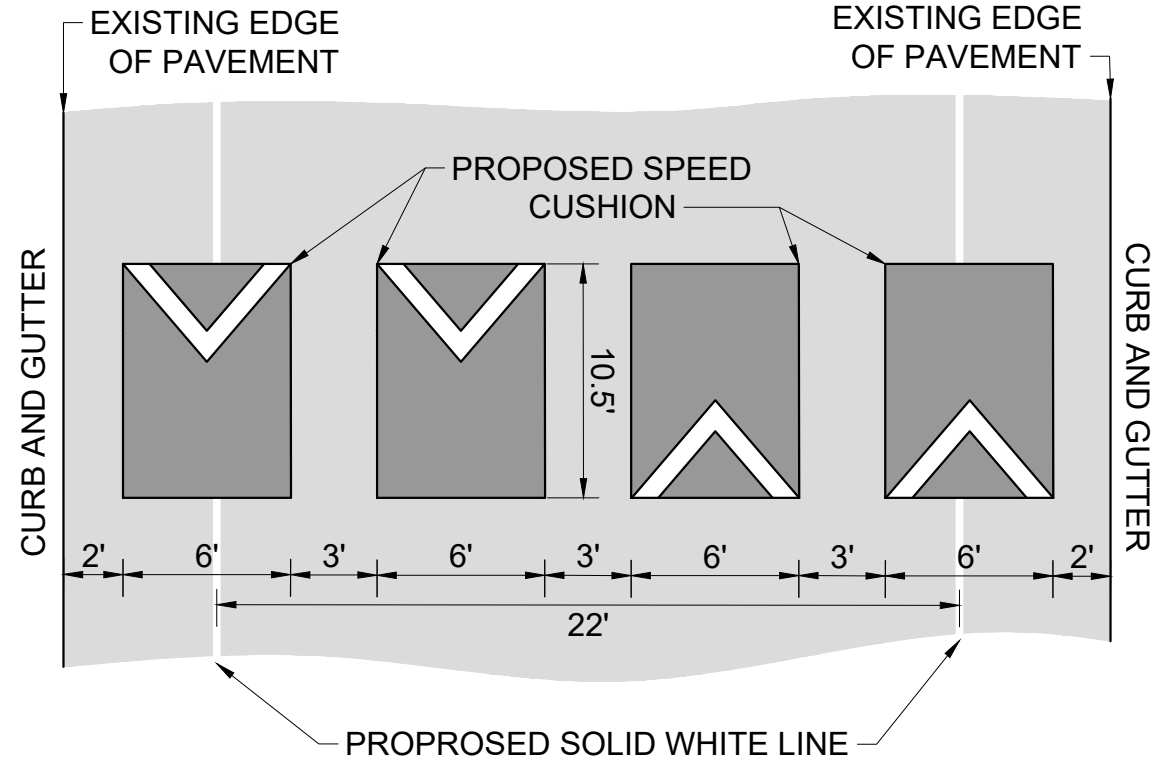


DESIGNED BY:	RBW
DRAWN BY:	JTL
CHECKED BY:	NDOT
DATE:	4/3/2024
KIMLEY-HORN PROJECT NO.:	118900046

This document, together with the concepts and designs presented herein, as an instrument of service, is intended only for the specific purpose and client for which it was prepared. Reuse of and improper reliance on this document without written authorization and adaptation by Kimley-Horn and Associates, Inc. shall be without liability to Kimley-Horn and Associates, Inc.

CONFIGURATION A

37' OF PAVEMENT



BLAIRFIELD DRIVE
TRAFFIC CALMING
NASHVILLE, TN



DESIGNED BY:	RBW
DRAWN BY:	JTL
CHECKED BY:	NDOT
DATE:	4/3/2024
KIMLEY-HORN PROJECT NO.	118800046

DETAIL

SHEET NUMBER
06