

ESTIMATED QUANTITIES

SPEED CUSHIONS

6' X 10.5' SPEED CUSHION WITH ONE ARROW	10
---	----

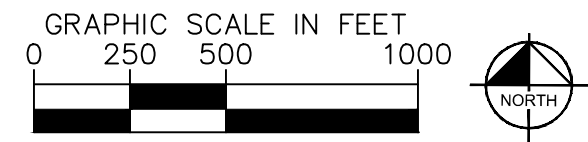
SIGNING

W17-1 (VAR.) "SPEED CUSHIONS AHEAD" SIGN (30" X 30")	2
W17-1 (VAR.) "SPEED CUSHIONS" SIGN (30" X 30")	4
W13-1P "20 M.P.H" SIGN (18" X 18")	6

NOTE: ALL LOCATIONS ARE REFERENCED FROM CENTERLINE OF DRIVEWAYS OR OTHER LANDMARKS TO THE CENTER OF SPEED CUSHIONS OR SIGNS.

LEGEND

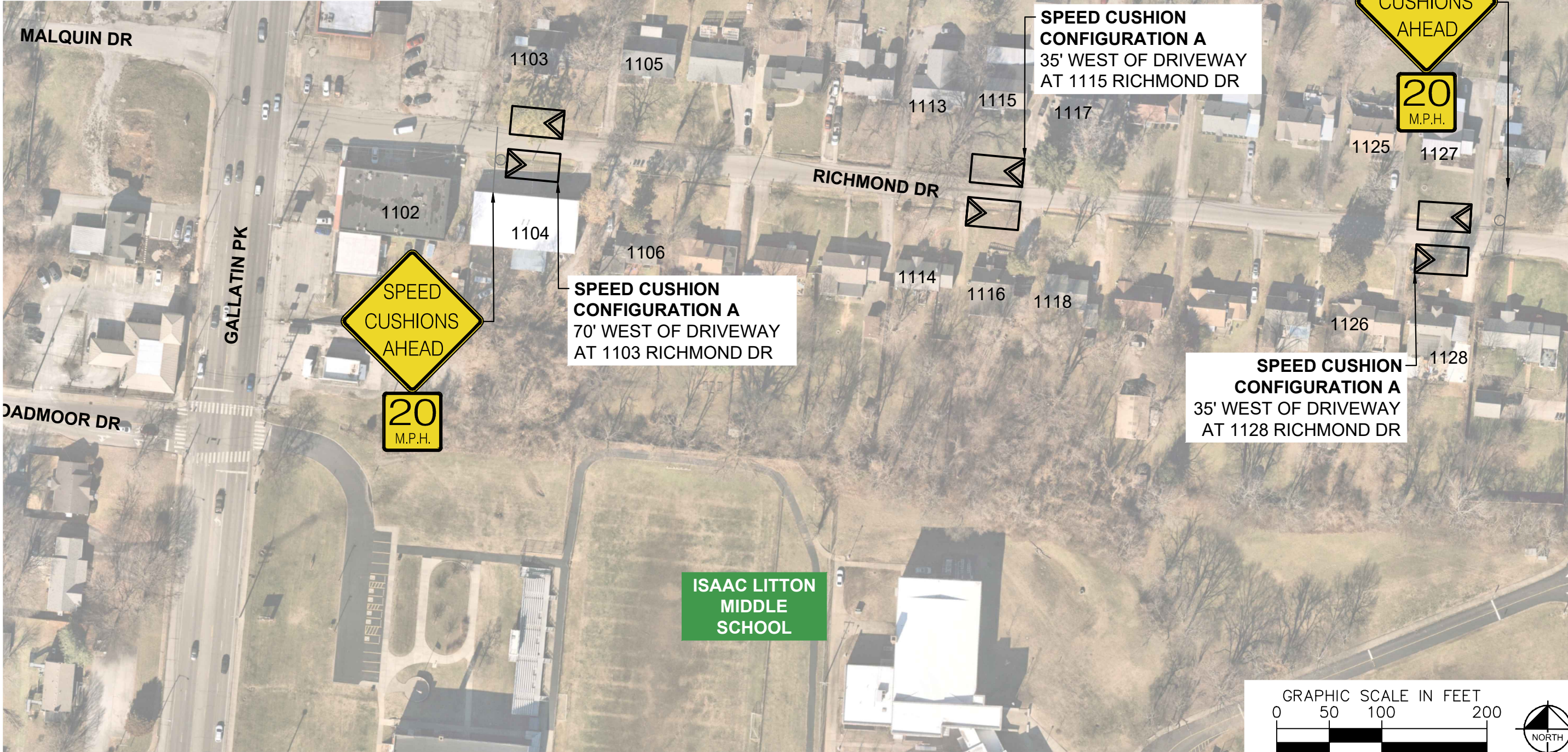
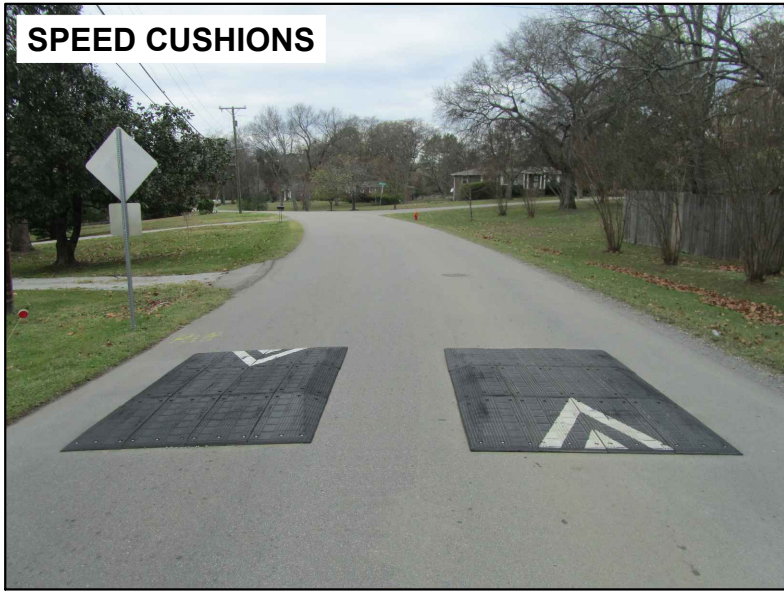
-  LIMITS OF TRAFFIC CALMING PROJECT
-  SPEED CUSHIONS



DESIGNED BY:	DHT
DRAWN BY:	TWR
CHECKED BY:	NDOT
DATE:	1/29/2024
KIMLEY-HORN PROJECT NO. 118900046	

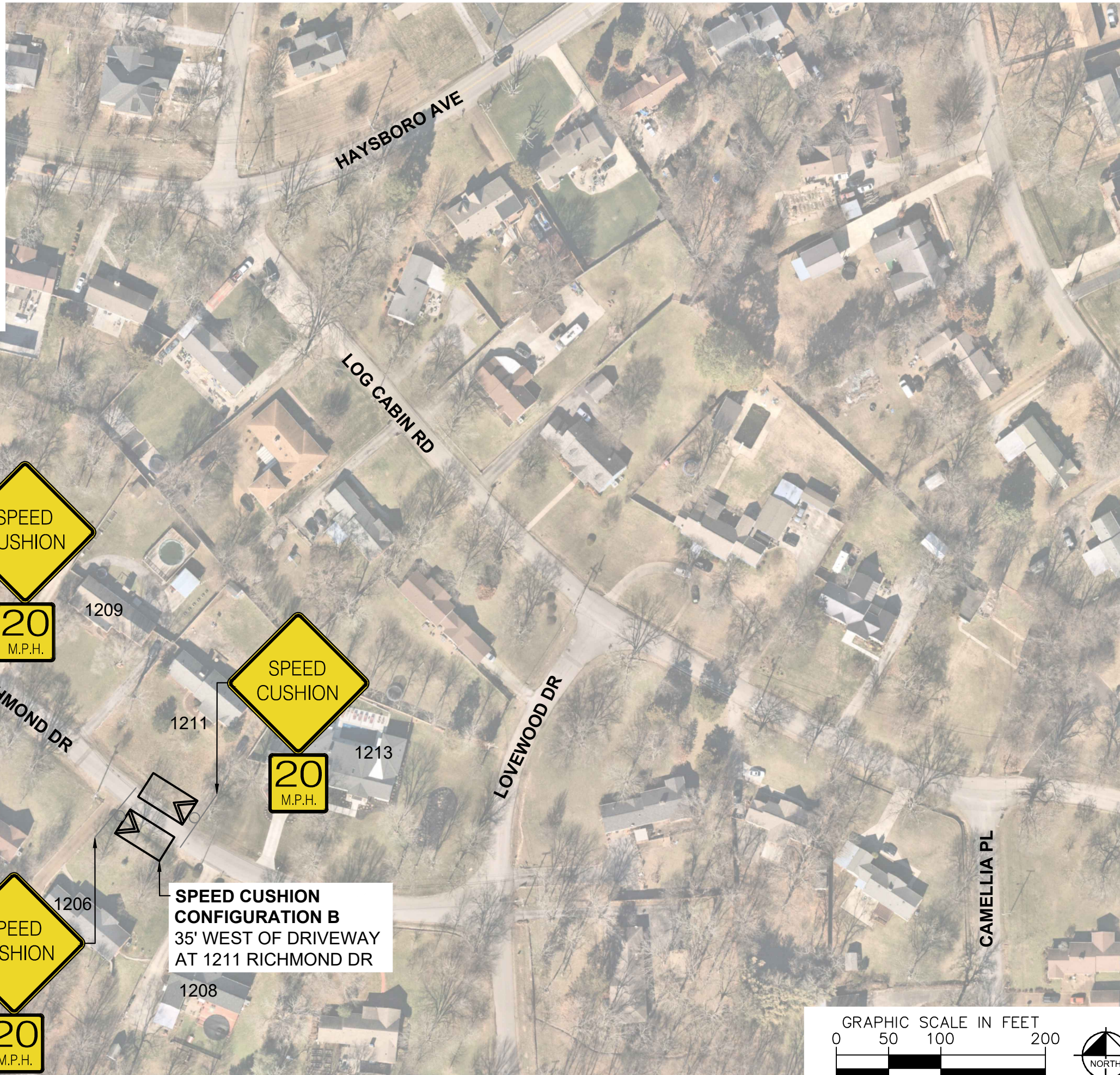
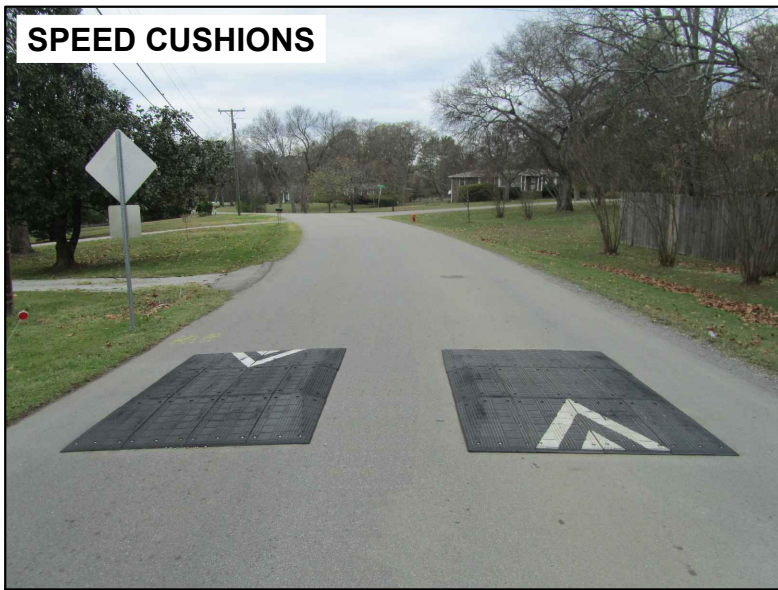
This document, together with the concepts and designs presented herein, is intended only for the specific purpose and client for which it was prepared. Reuse or improper reliance on this document without written authorization and adaptation by Kimley-Horn and Associates, Inc. shall be without liability to Kimley-Horn and Associates, Inc.

SPEED CUSHIONS



DESIGNED BY:	DHT
DRAWN BY:	TWR
CHECKED BY:	NDOT
DATE:	1/29/2024
KIMLEY-HORN PROJECT NO.	118900046

SPEED CUSHIONS



**RICHMOND DRIVE
TRAFFIC CALMING**
NASHVILLE, TN



DESIGNED BY:	DHT
DRAWN BY:	TWR
CHECKED BY:	NDOT
DATE:	1/29/2024
KIMLEY-HORN PROJECT NO. 118900046	

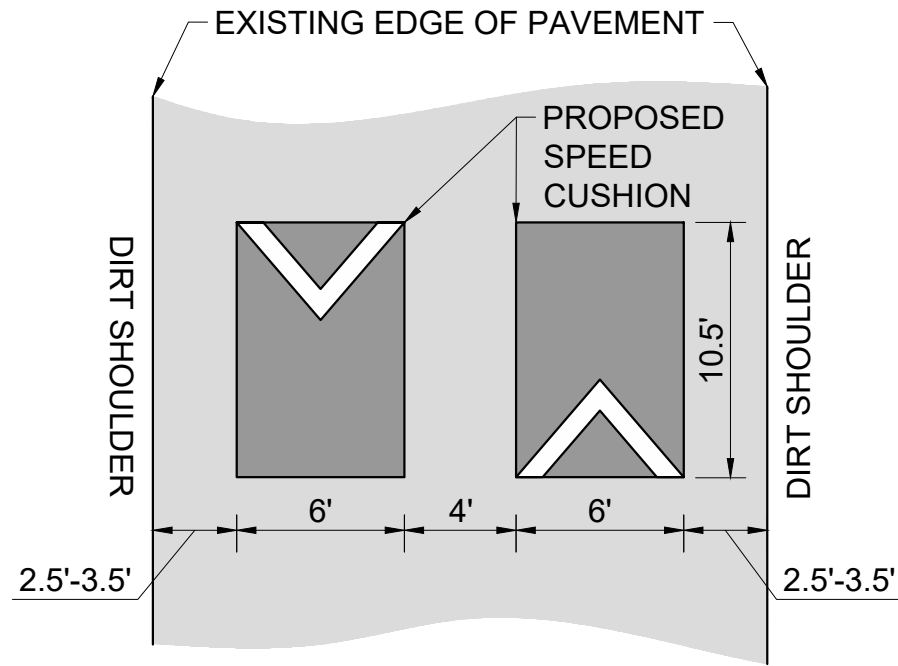
CONCEPT
SHEET NUMBER
03

This document, together with the concepts and designs presented herein, is intended only for the specific purpose and client for which it was prepared. Reuse or improper reliance on this document without written authorization and adaptation by Kimley-Horn and Associates, Inc. shall be without liability to Kimley-Horn and Associates, Inc.

This document, together with the concepts and designs presented herein, as an instrument of service, is intended only for the specific purpose and client for which it was prepared. Reuse of and improper reliance on this document without written authorization and adaptation by Kimley-Horn and Associates, Inc. shall be without liability to Kimley-Horn and Associates, Inc.

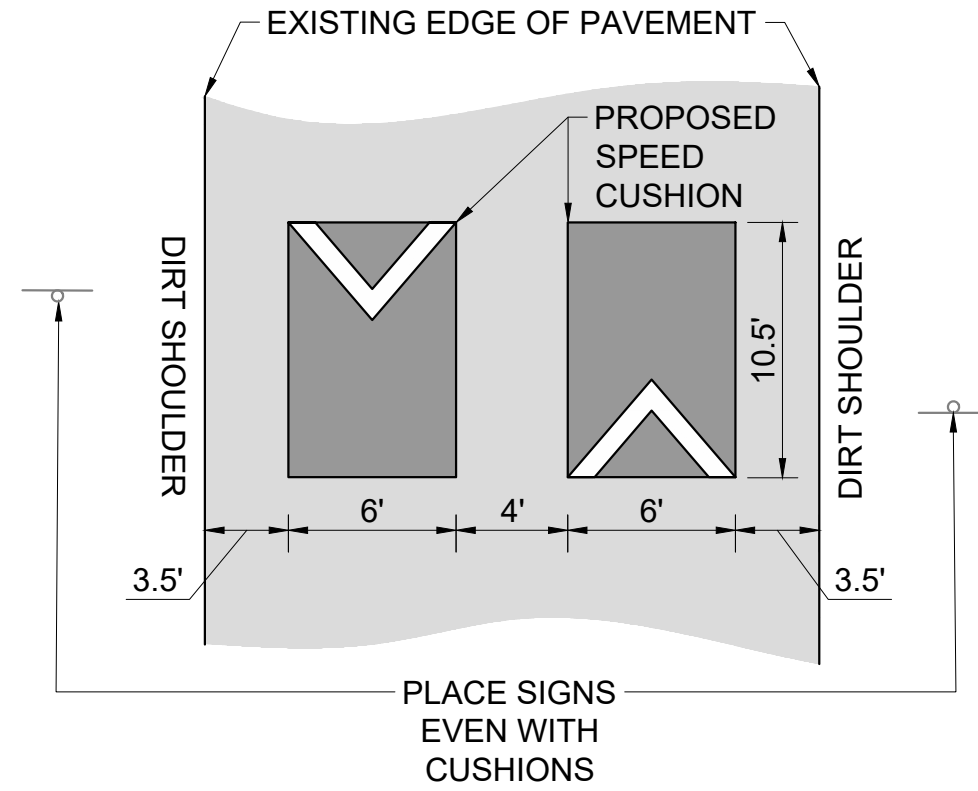
CONFIGURATION A

21-23' OF PAVEMENT



CONFIGURATION A

23' OF PAVEMENT



RICHMOND DRIVE
TRAFFIC CALMING
NASHVILLE, TN



DESIGNED BY:	DHT
DRAWN BY:	TWR
CHECKED BY:	NDOT
DATE:	1/29/2024
KIMLEY-HORN PROJECT NO.:	118800046

DETAIL

SHEET NUMBER
04