



Wharfi Park

Public Meeting #1 Summary

Community Outreach

08.03.2021 - 08.04.2021

Our first round of community engagement was a success!



We hosted two sessions in two local neighborhoods

Community Outreach

08.03.2021 - 08.04.2021



2 ENGAGEMENT
EVENTS

107 TOTAL
ATTENDEES

400+ COMMENTS
RECORDED!

Community Outreach

Key Groups

While we received feedback and ideas from a diverse group of attendees, there are two community groups whose comments are represented the most...



Open Table Nashville

Open Table is a Nashville non-profit focused on homeless outreach, education, and advocacy. They are concerned that Wharf Park's development will add to a pattern of displacement and unhoused community trauma.

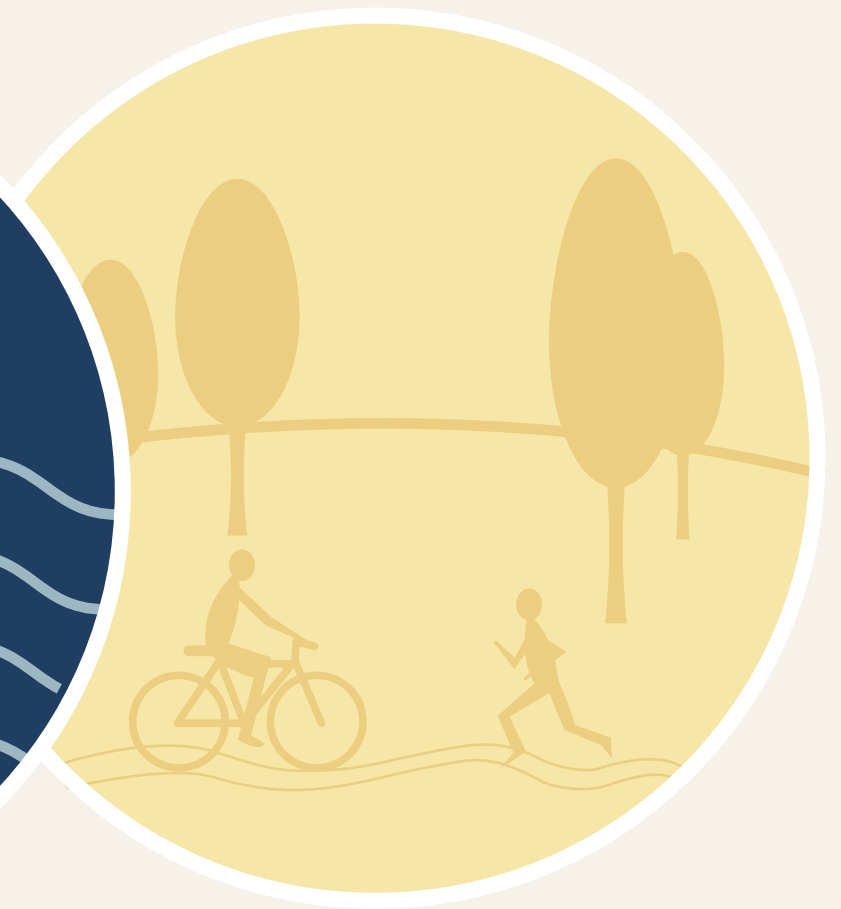
50+ COMMENTS RECORDED

Nashville Rowing Club

Nashville Rowing is a non-profit organization fostering water recreation and competition opportunities for amateur athletes. The club has some concerns about water safety but is generally excited by the prospect of water access and a potential rowing center at Wharf Park.

30+ COMMENTS RECORDED

Feedback Summary themed activities



Identity

After describing Wharf's history, current identity and physical attributes...

make it your own

SITE HISTORY

The use and character of the Wharf Park Property has evolved over the centuries. First as a place of sustenance to indigenous people, then a series of industrial and infrastructure uses, a civil war military fortification, and lastly a place of utility for Nashville.

Each of these past uses capitalized on the site's unique topography - a steep and geologically unique bluff against a low-lying broad floodplain.

LOOKING FORWARD

We look to create a park that honors the site's history and similarly takes advantage of its defining and unique features. Each era has left traces - rail lines, roadways, manipulated topography, utilities, etc - behind. We will need to overcome some barriers and welcome people to become acquainted with a largely hidden but exciting place!

NATIONAL TRENDS

Parks are increasingly so much more than a collection of neighborhood amenities. What are some inspirational trends in Neighborhood Park?

PUBLIC HEALTH

- Fitness programs
- Multigenerational
- Green and healthy
- Life-long youth

GENERATIONAL

- Family-oriented
- Targeted to needs
- Financial sustainability

A BIGGER TENT

- Art & culture
- Design management
- Equity
- Financial sustainability

RESILIENCE

- Conservation
- Service identity
- Place-based identity of age

What are the opportunities?

make it your own

Inspired by the potential of Wharf Park? Imagine yourself in the park in five years... Tell us that story... What are you doing? How do you feel? Who are you with?

...we asked community members to share their stories of the park's future history.

Identity

Community connection to those directly adjacent to the property, could be the best backyard ever!

Green! Healthy canopy, bio-diverse, community garden

In 5 years, I am at the park visiting people who live in the “safe zone” parking lot until they get permanent housing. There are 24/7 bathrooms, gardens, and jobs for people who need them, free wifi, and a small library or indoor areas

Comments largely centered youth recreation, future access, and concerns about the social welfare of the current unhoused residents on site *

Community area with internet access, bathrooms, showers, computer labs and other resources

Greenway with edible trees and shrubs

Working with Nashville rowing club to find scholarship for the Learn to Race Competition for inner city/disadvantaged kids

Safe place for rowing, both from boat traffic on water and general safety on land - will help us expand and be more inclusive

Center for the youth after school and in the summer

I've ridden my bike there along the greenway to get a boat to go canoing

67 STORIES SHARED

**see link on main webpage for a complete list of comments*


River

After describing Wharf's current context in relation to the Cumberland River...

make it your River

The River Today
The Wharf Park site offers exceptional opportunities to engage with the Cumberland River, providing a low-lying place to easily connect with the water. The park's scale and closeness to the water make it a desirable location for many types of river access and engagement. At the same time, its proximity to the river means it needs to be designed for flooding.

Looking Forward
Today, we hope to learn more about your relationship to the Cumberland. What kinds of ways do you want to engage with the river?




Water System

Adjacent Riverside Commercial Use

Adjacent Riverside Recreational Use

NEIGHBORHOOD CONTEXT



Legend:

- Water
- Wharf Park
- Adjacent Commercial Use
- Adjacent Recreational Use
- Adjacent Residential Use
- Adjacent Industrial Use
- Adjacent Office Use
- Adjacent Retail Use
- Adjacent Entertainment Use
- Adjacent Public Use
- Adjacent Private Use
- Adjacent Other Use

Water Access


Fishing

Stormwater

Riverwalk

River overlooks

----- **What are the opportunities?** -----



Need for design and grading to enable access

Design park amenities to reduce flood waters

Potential for flood-tolerant landscapes

Design and grading to enable access to the river

Unrealized potential for boating and water access



make it your river

Inspired by the potential of Wharf Park?
Use the activity stickers to share some of your favorite RIVER activities!

ROWING	RIVER WALK	FISHING	NATURE EDUCATION
KAYAKING	SWIMMING	WILDLIFE	ROWING CENTER
PADDLE BOARDS	OVERLOOKS	RIVER PLANTING	OTHER

...we asked community members to use our activity stickers to envision future water uses

River



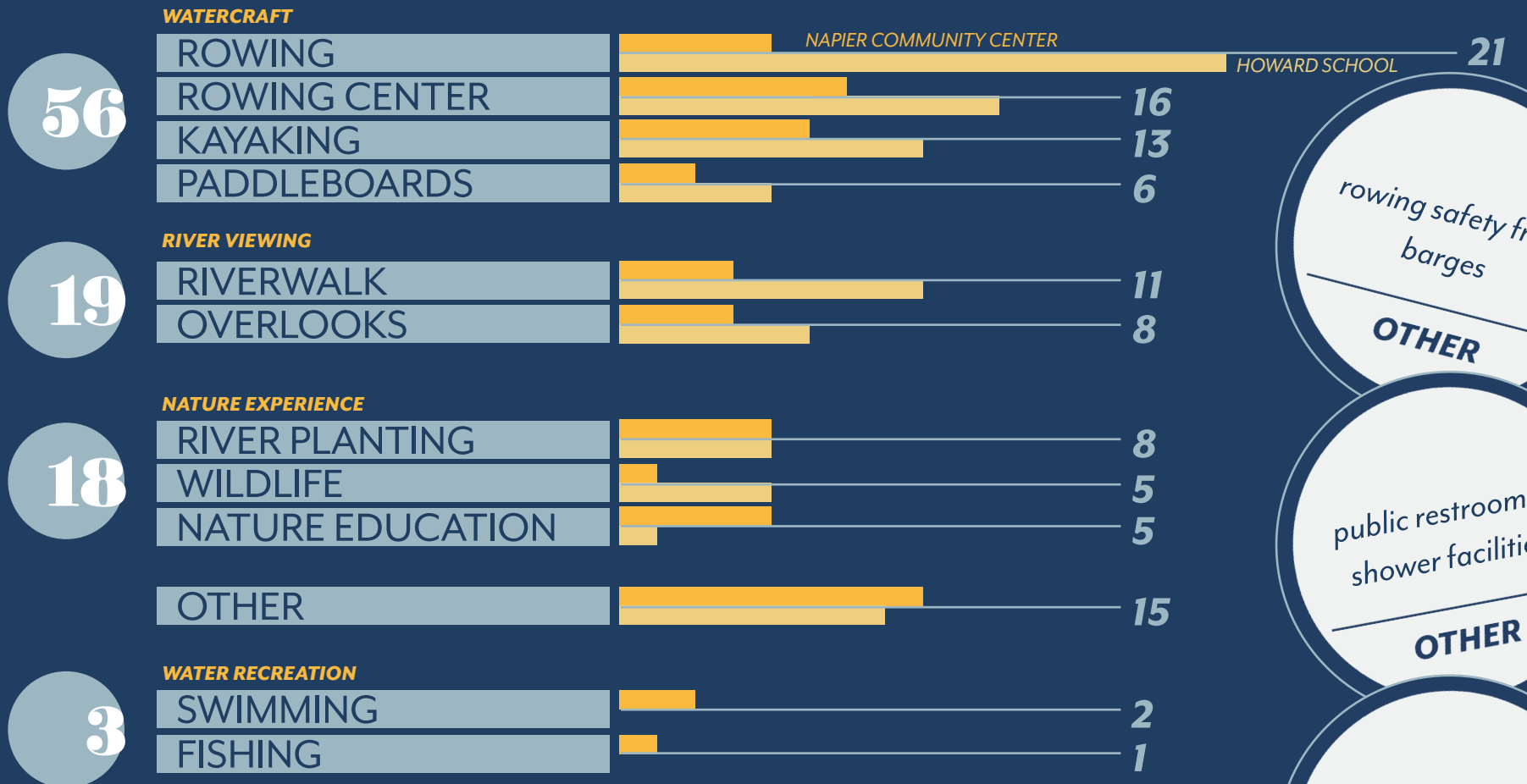
make it your river

Inspired by the potential of Wharf Park?

Use the activity stickers to share some of your favorite RIVER activities!



Dedicated space for paddle watercraft, water safety and passive river viewing were important and recurring themes*



rowing safety from barges

OTHER

public restrooms/
shower facilities

OTHER

multigenerational rowing

OTHER

*see link on main webpage for a complete list of comments

Park

After describing the site's current context in relation to surrounding parks and nearby neighborhood character...

make it your Park

PARK CONTEXT

Building on recent planning efforts like Plan to Play and Envision Napier Sudekum, Wharf Park is imagined to be a neighborhood park. This means an emphasis on meeting the needs of a diverse array of local constituents, creating places for everyday activities and emphasizing walkability and access.

Ultimately, the programming and design for Wharf Park will be determined in close collaboration with its users, like today's forum. We are excited to learn more about the kind of open space experiences, uses and places that are most likely to resonate with your needs!

ENVISION NAPIER SUDEKUM SAYS...

- 23% of children get 30-60 minutes of physical activity daily
- 30% say recreational facilities are good/very good, but lack fitness facilities
- 85% feel unsafe at night

PLAN TO PLAY SAYS...

- soft, exercise, nature and arts/cultural programs are needed
- senior residents participate in sports and fitness more than the national average
- picnic and play spaces rank high on the list of needs

NEIGHBORHOOD CHARACTER



What are the opportunities?



Make It Your Park

Inspired by the potential of Wharf Park?
Use the activity stickers to share some of your favorite PARK activities!



...we asked community members to use our activity stickers to how they would use the future park



Park



Make It Your Park

Inspired by the potential of Wharf Park?

Use the activity stickers to share some of your favorite PARK activities!



In addition to water access, skate parks and nature programming, attendees highlighted needs for facilities, 24 hour access, and water safety*

NAPIER COMMUNITY CENTER 26
HOWARD SCHOOL

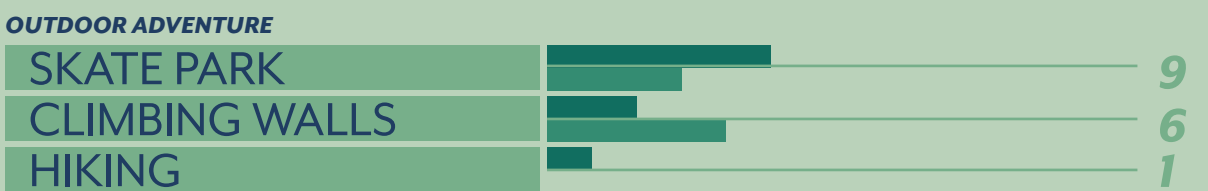
28



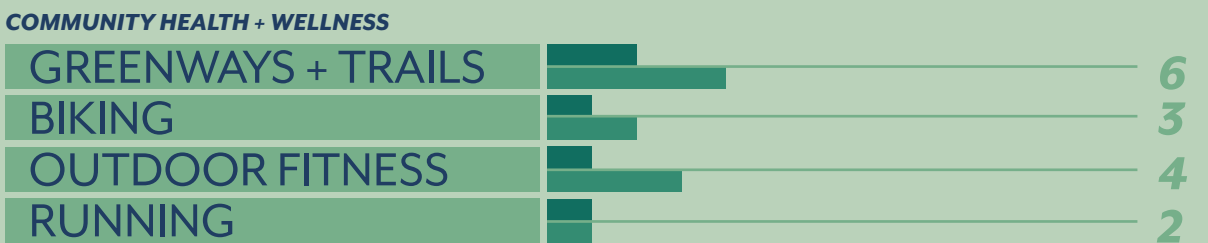
18



16



15



14



meeting with my caseworker
OTHER

public campground
OTHER

ability to safely use at night, lighting/call boxes
OTHER

*see link on main webpage for a complete list of comments

Greenway

At this station we described the site's current accessibility and potential connections via greenway and transit...

make it your Greenway

CONNECTIVITY

Today, the site of Wharf Park is not easily accessible from all directions. Long an industrial site, the property boundaries are defined by interstate and rail line, making the only accessible connection via Arthes Drive via Hermitage Avenue. In the future, the site can be a much more accessible place by connecting to nearby greenways, access by water and improvements to the streets leading into the site.

EXISTING GREENWAYS - TRANSIT

WALKING ACCESS

The site is very close to many potential park users, however, physical barriers impact the actual "walk sheds" - or areas within a 5, 10, 15 and 20 minute walk of the park. Future greenway connections (shown in green) will expand this access. But there is a lot more opportunity to both strengthen and make more enjoyable existing connections!

Hiking
Accessibility
Greenway connections
Trails
Pedestrian crossing

What are the opportunities?

Make It Your Greenway

Tell us a bit about how you'll get there! Draw your desired route to the park above. And check your highest priority mode of travel below!

Walking

Biking

Driving

Ride Sharing

Bus Riding

By Water

Other _____

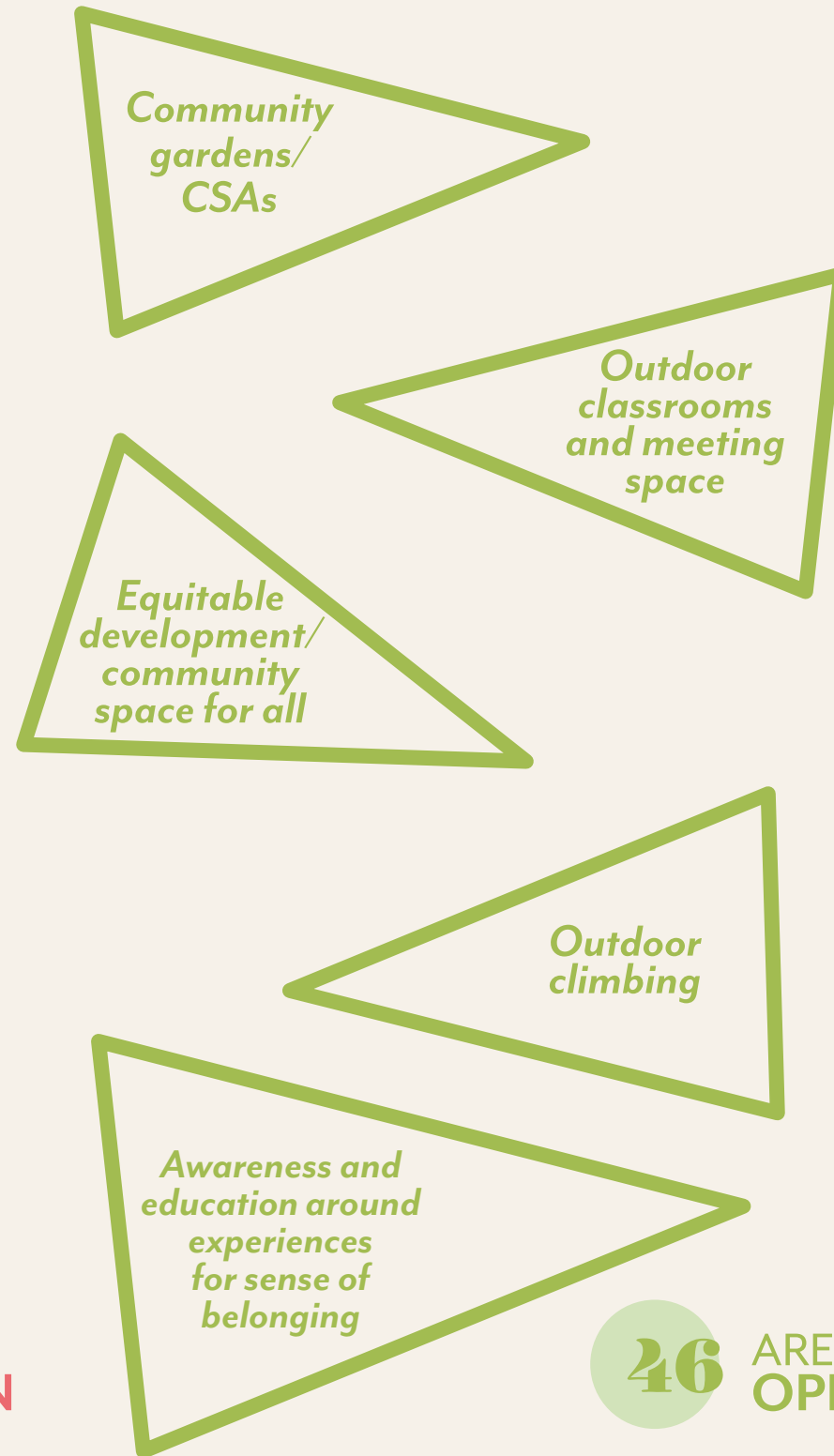
...community members then indicated which potential routes and connections should be made, and which mode of transportation they preferred to use to get there

Model

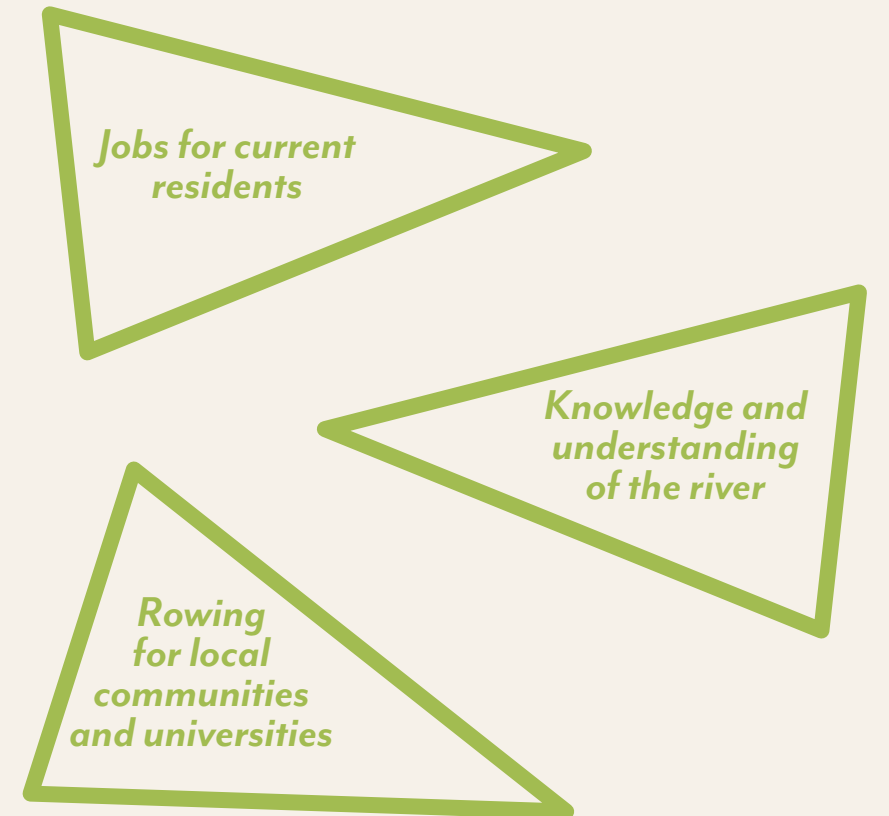
Areas of concern centered largely around issue of accessibility, safety, tourism identity, and displacement of unhoused and low income communities *



22 AREAS OF CONCERN



46 AREAS OF OPPORTUNITY



People saw opportunities in the potential for rowing/water access, nature recreation, connection to the neighborhood, and potential for community organization partnerships *

* see link on main webpage for a complete list of comments

The Process

2020

2021

FEB

MAR

APR

MAY

JUN

JUL

AUG

SEP

OCT

NOV

DEC

JAN

FEB

MAR

Discover

Site Analysis and Data Collection

1

Focused Discussions

Connect with Key Focus Groups

2

Design

Programmatic Planning

3

Deliver

Master Planning

4

COVID-19
PAUSE

COMMUNITY
WORKSHOP #1

COMMUNITY
WORKSHOP #2

COMMUNITY
WORKSHOP #3

WE ARE HERE!