

Second Public Meeting

Site Tour of the Park Property

Concept Plan Summary

Following the first round of public engagement, the design team developed two concept plans. Each concept plan has overlapping features that are based on public input and facilities deficiencies identified by Metro Parks' *Plan to Play*. These features include:

- 1/4-mile paved loop
- Unpaved natural walking paths
- Native planting buffers
- Picnic shelters and areas
- Multipurpose field and sports courts

The unique features of each concept plan scheme are summarized in the following two pages.

Meeting Summary

On Saturday, March 4, 2023, a site tour was held at the park site. This meeting allowed attendees to familiarize themselves with the property in an open, interactive, and fun way. Visitors of the site were also asked to provide feedback on the two concept plans in the form of comments and markups.

Attendants were guided through the following activities:

1. Sign-in and sticking a pin on the location map where they live
2. Review of site analysis, and summaries of the results of the first public meeting with a list of facilities needed county-wide
3. Scavenger hunt guiding attendees to key features of the property
4. Children's craft table and activities
5. Educational tour with a local naturalist
6. A chance to explore the beauty and notable features of the park site

Scavenger Hunt

The scavenger hunt pamphlet guided participants around the site through four stops. Each highlighted native trees and unique features on the site. In order to keep visitors moving in the correct direction and to encourage them to go to every stop, each stop had a sign with some letters displayed on it. At the end of the scavenger hunt loop, the letters spelled out "mariposa."

Tour with Naturalist

Two naturalists with Metro Parks provided attendees with a tour of the site. The tour included an overview of the native plant and bird species typically found in the area. The naturalists also surveyed the site and provided a list of plants and birds identified on the property that day.



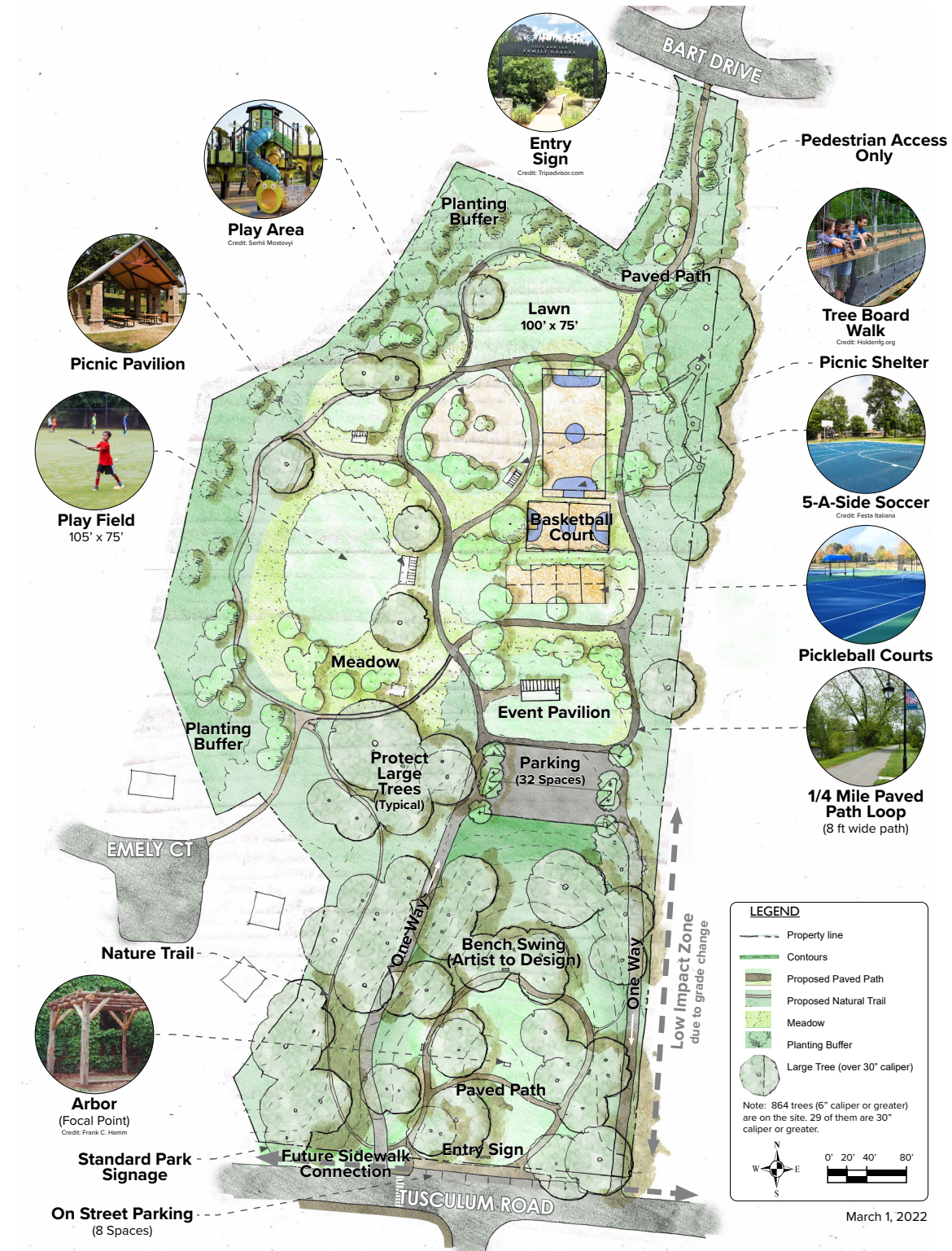
Key Points

- Held on 03.04.23 at park property
- Attendees participated in a scavenger hunt, tour with a naturalist, a children's craft table and provided feedback on the first two schemes
- Translators on stand-by at site tour



Conceptual Site Plan: Scheme A

Mariposa Park



Summary of Features: Scheme A

- Large central playground
- Three separate sports courts (pickleball, basketball, and 5-a-side soccer courts)
- Multipurpose playfield
- Large pavilion in the playground area
- Arbor at the entry along Tusculum Road
- Parking includes parallel spaces on Tusculum Road with a larger parking lot in the middle of the site (±40 spaces total)

Comments on Scheme A

- Please put 2 parking lots. North end and south end
- Love the tree walk / board walk
- I agree with the parking spaces- it allows people to enter the park from different roads. I am a huge advocate for pollinator gardens/ meadows/rain gardens. I would love to see a pollinator meadow around the meadow open area as pictured. Including milkweed, the host plant to the monarch mariposa, would be apropos. The park could have community Monarch tagging events to create interest and awareness. Including native plants provides food and habitat to native species. Some of my ideas:
- Climbing native vines on the arbor- passion vine, corral vine, gessamine, American Constantia
- Pollinator meadow- snowy tickseed, swamp milkweed (monarch's favorite), big blue stem grass
- Save as many keystone trees as possible. Some keystone trees include white oak, black cherry, river birch, black willow.
- Love the tree boardwalk! Overall, I like a mixture of the plans but I like the layout of Plan A
- Please keep the hemlocks and any downed trees
- Maybe ask a naturalist some trees need to be preserved.
- Is it possible to add or plan for additional spaces for parking near Bart and area for community garden?
- Prefer access to Tusculum for parking
- Make sure it has good playground, including swings
- Add art, especially mariposas

Other comments (not necessarily related to scheme A or B)

- Absolutely support
- Concern about parking availability. Have parking on both Bart and Tusculum.
- Safety concerns with parking not being available on both sides.
- *What was your favorite thing you saw today?* I loved seeing everyone out here giving input and sharing their interest in the park.
- *What do you hope to do at this park in the future?* Recreate, enjoy seeing native plants and pollinators.

March 1, 2022

Conceptual Site Plan: Scheme B

Mariposa Park



Summary of Features: Scheme B

- Small play-pods areas for kids
- Tennis court and basketball court
- Larger multipurpose playfield
- Tree Board Walk overlooking large, sloped area towards Tusculum Road
- Parking includes parallel spaces on Tusculum Road with a parking lot tucked into the site off Bart Drive (±40 spaces total)

Comments on Scheme B

- Fantastic Plan! I'm a native in the community. My grandmother Grace Cole lived and taught school for 40 years here. Thank you for not forgetting Antioch.
- It would be great to preserve the barn as a picnic pavilion.
- I live right across the street. Love this plan with graveled drives and parking at the rear.
- The parking needs to be at least 40-50 spaces
- The play field needs to be at least 120 yards x 54-60 yards (l x w)
- You can use the barn location for education and a community garden program
- Where are the bathrooms?
- For this location, an actual indoor facility would be useful for community meetings, park police/ metro police, education.
- Dual parking on both side of the park- on Tusculum and Bart Drive
- Bench on nature trails
- Natural trail that loops around
- Follow the example of the dragon park in which you create a piece of art and a playground area using materials that are nature friendly
- Event pavilion does not make sense based on size of parking and size of park. Will prefer a barn pavilion or a couple picnic pavilions at the most.
- Locate parking spaces outside of the green area.
- Keep parking out of the interiors of the park.
- Parking off Bart Drive preferred.
- I love the community garden plan! I much prefer this one to Plan A. I would want to keep this space more natural, with less fields/ courts/cement. Nature trails!
- I really like Plan B
- We really like Plan B, the area is perfect for my family. Thank you.