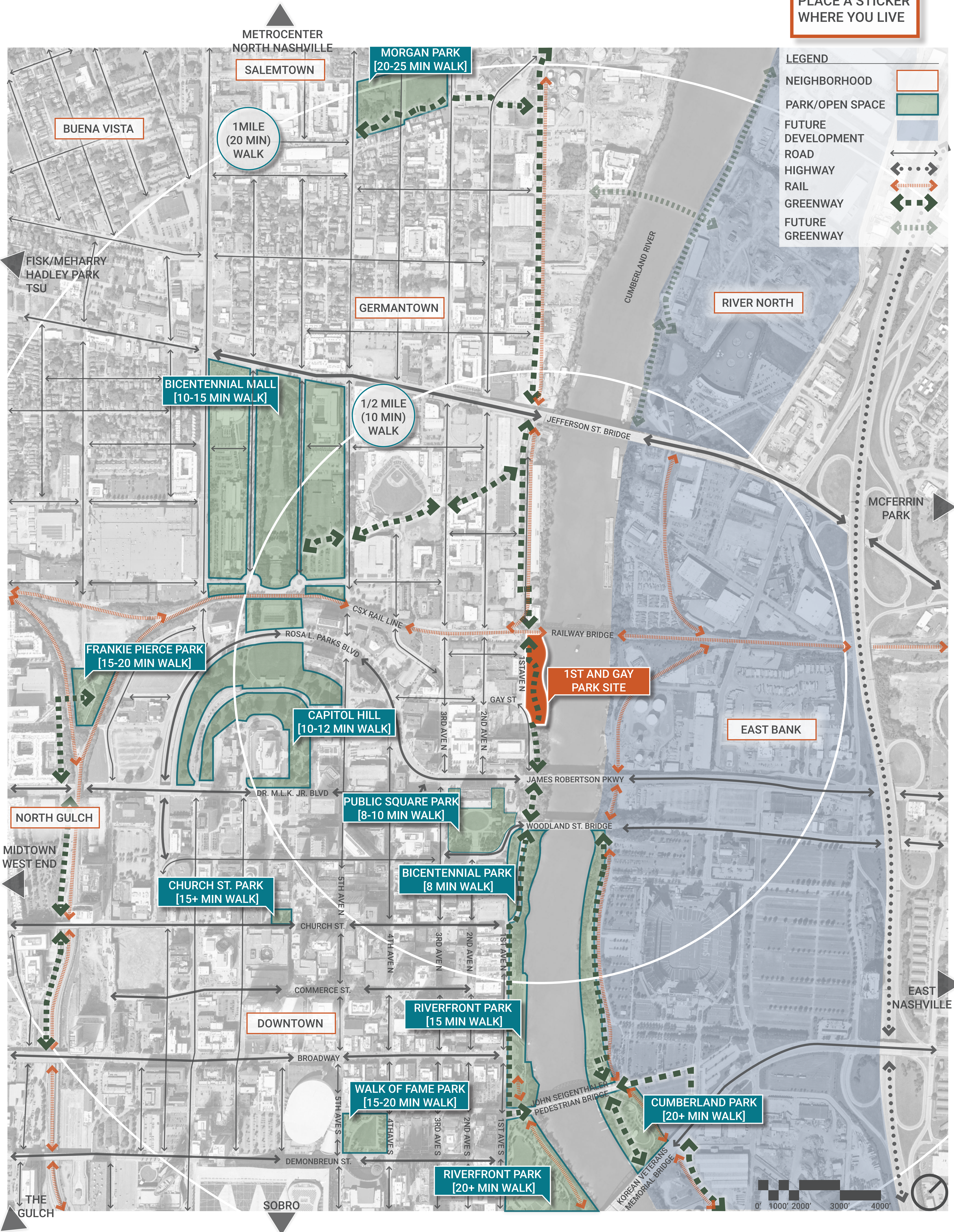


1st + Gay St. Park

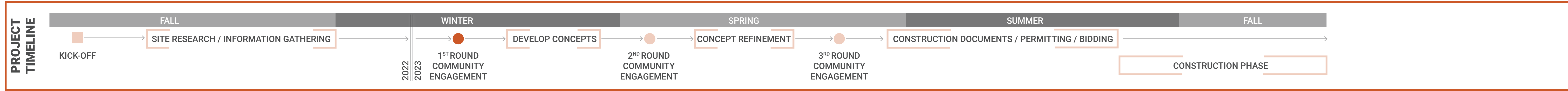
Where do you live?

PLACE A STICKER WHERE YOU LIVE



1st + Gay St. Park

YOUR FUTURE NEIGHBORHOOD PARK



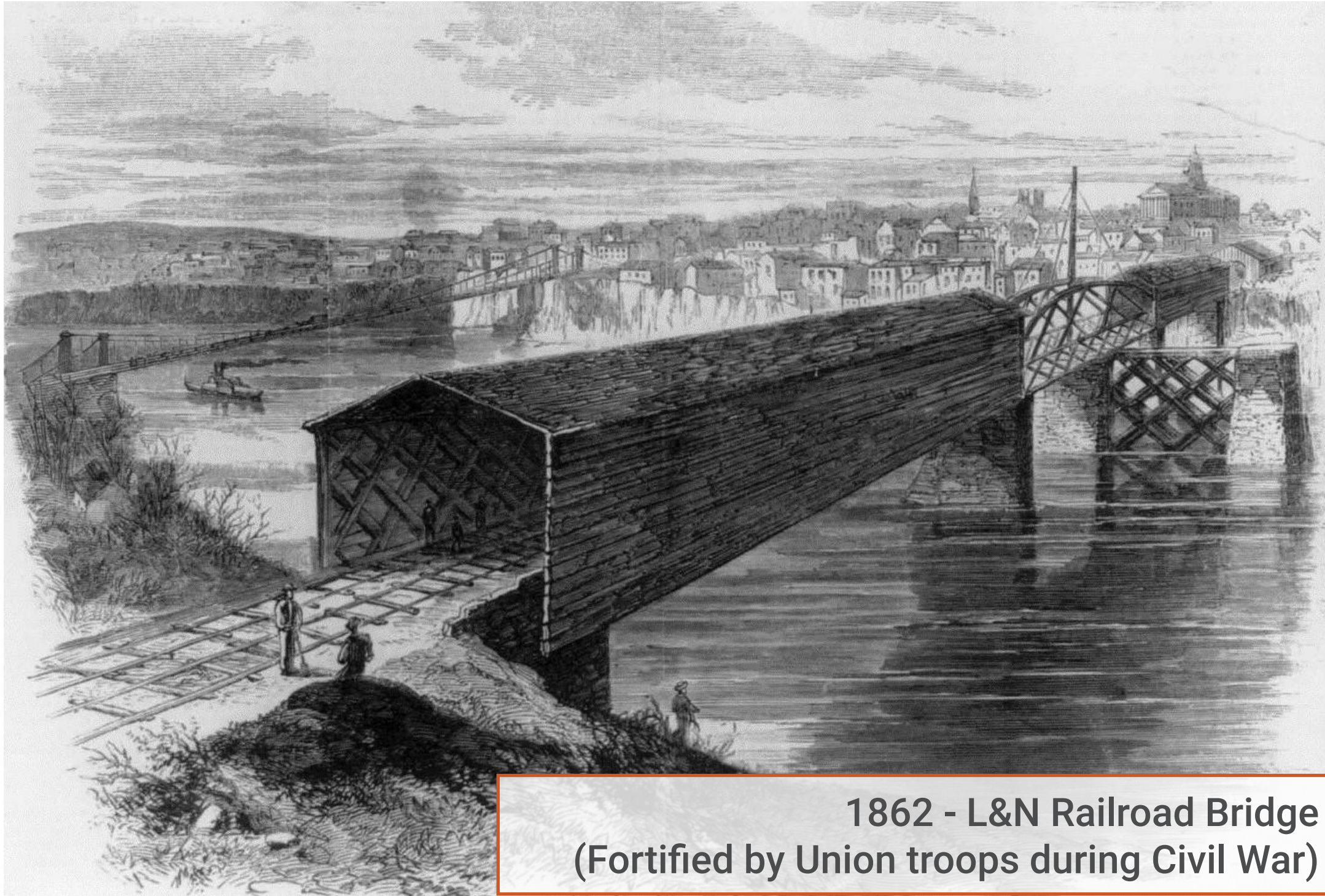
1st + Gay St. Park

Historical Information

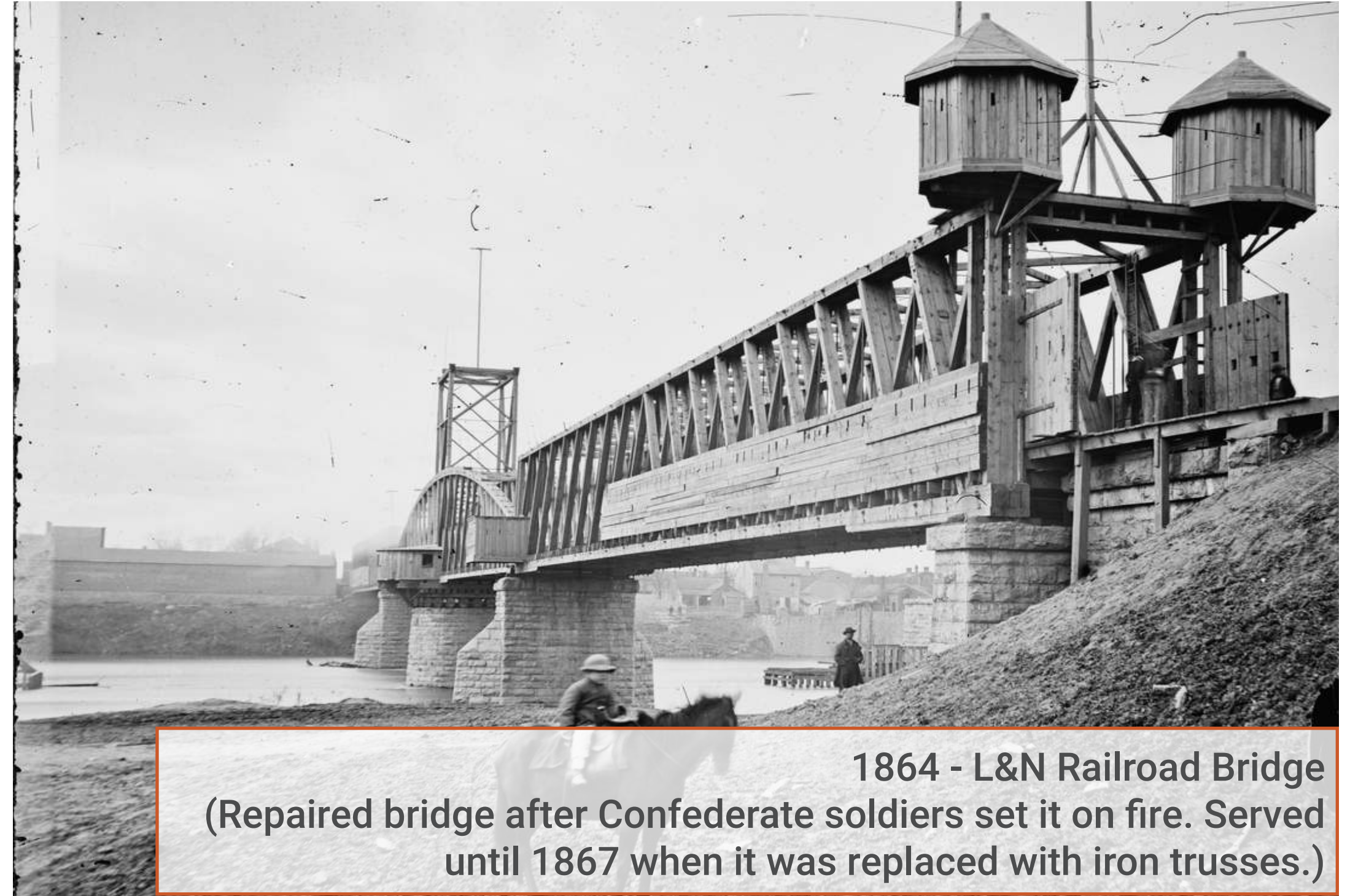
SITE HISTORY:

- **[Native Americans]** The project site sits along the Cumberland River near what once was hunting ground for Native Americans. This area attracted large wild game, such as bison, that were hunted by tribes such as the Shawnees and, eventually, the Cherokees and Chickasaws.
- **[European Settlements]** The French Lick or Big Salt Springs on the Cumberland River, attracted French settlers that set up forts and warehouses for their fur trade in the early 1700s. The British would eventually take over and established neighborhoods near what is today the Bicentennial Mall.
- **[Trail of Tears]** The site is also situated near the remnants of Nashville's first bridge over the Cumberland River, the 1823 Nashville Toll Bridge. Native American tribes were forced to move westward across the Cumberland at this location. Today the Woodland Street bridge spans across the river near this location.

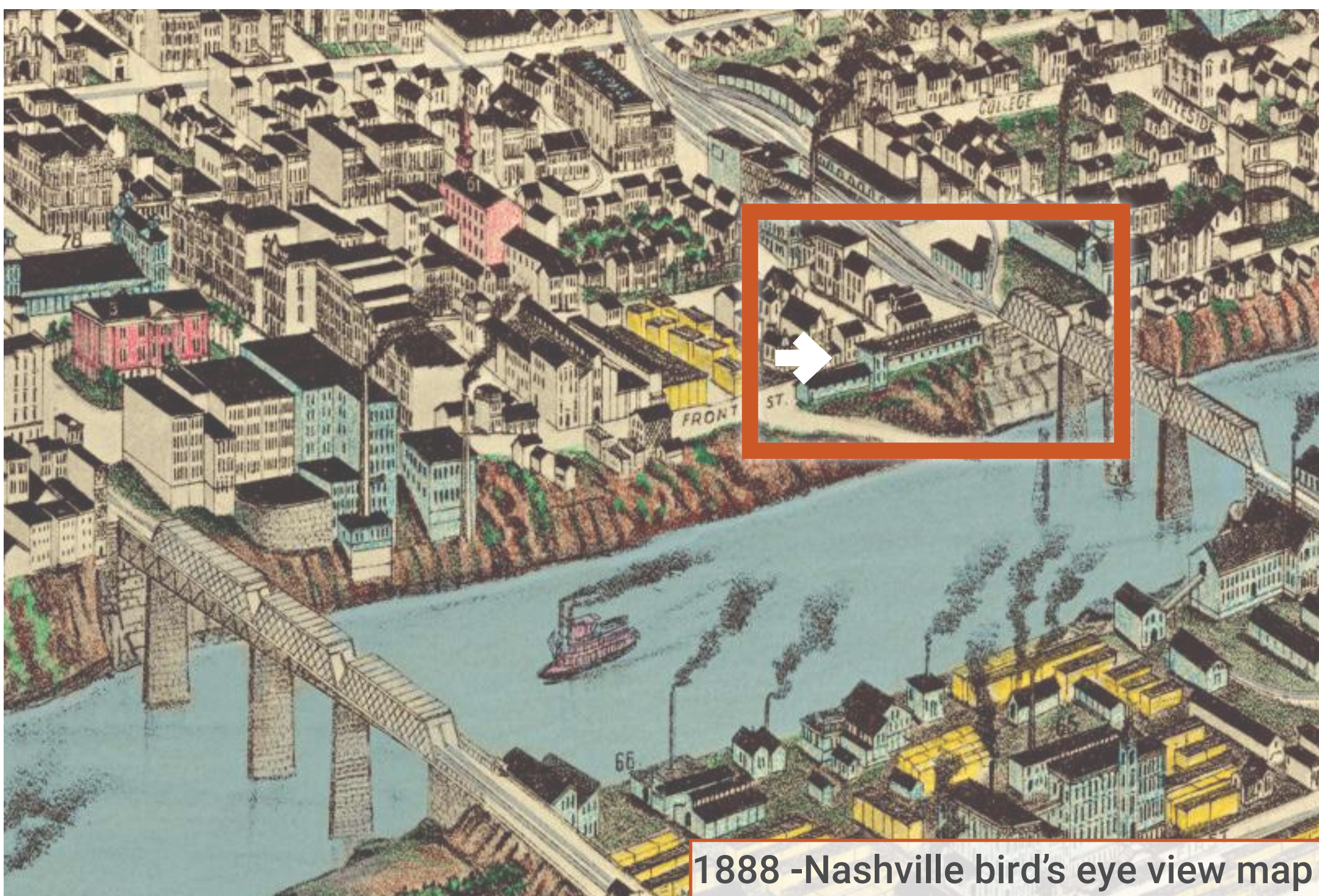
- **[Civil War]** The Louisville & Nashville Railroad (L&N) built the first rail bridge, made out of wooden trusses, in 1857 and finalized in 1859. In 1862 the Union troops took control of Nashville, during the American Civil War. The bridge was set on fire by Confederate soldiers as they retreated. The bridge was replaced in 1867 with iron trusses. In 1931, the bridge would be updated again with stronger trusses to handle the heavier train loads.
 - In 1858, the City Workhouse was built on the southern bank of the Cumberland River, a 400 ft by 70 ft large brick building.
 - Today the site serves as a parking lot for the Nashville-Davidson County Sheriff's office and the Davidson County Criminal Court, located in the Justice A. A. Birch Building.
- **WHAT MIGHT YOU ADD?**



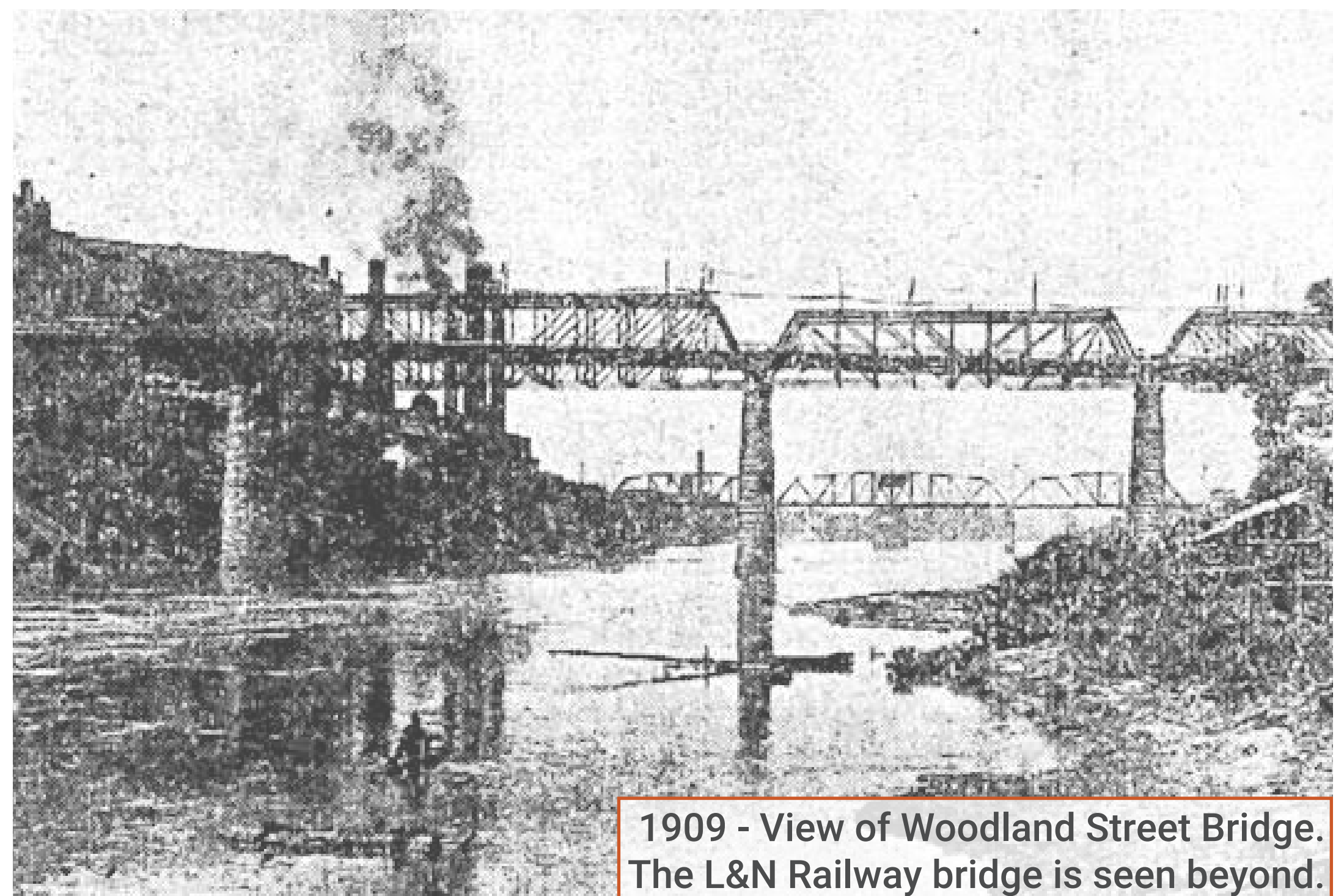
1862 - L&N Railroad Bridge
(Fortified by Union troops during Civil War)



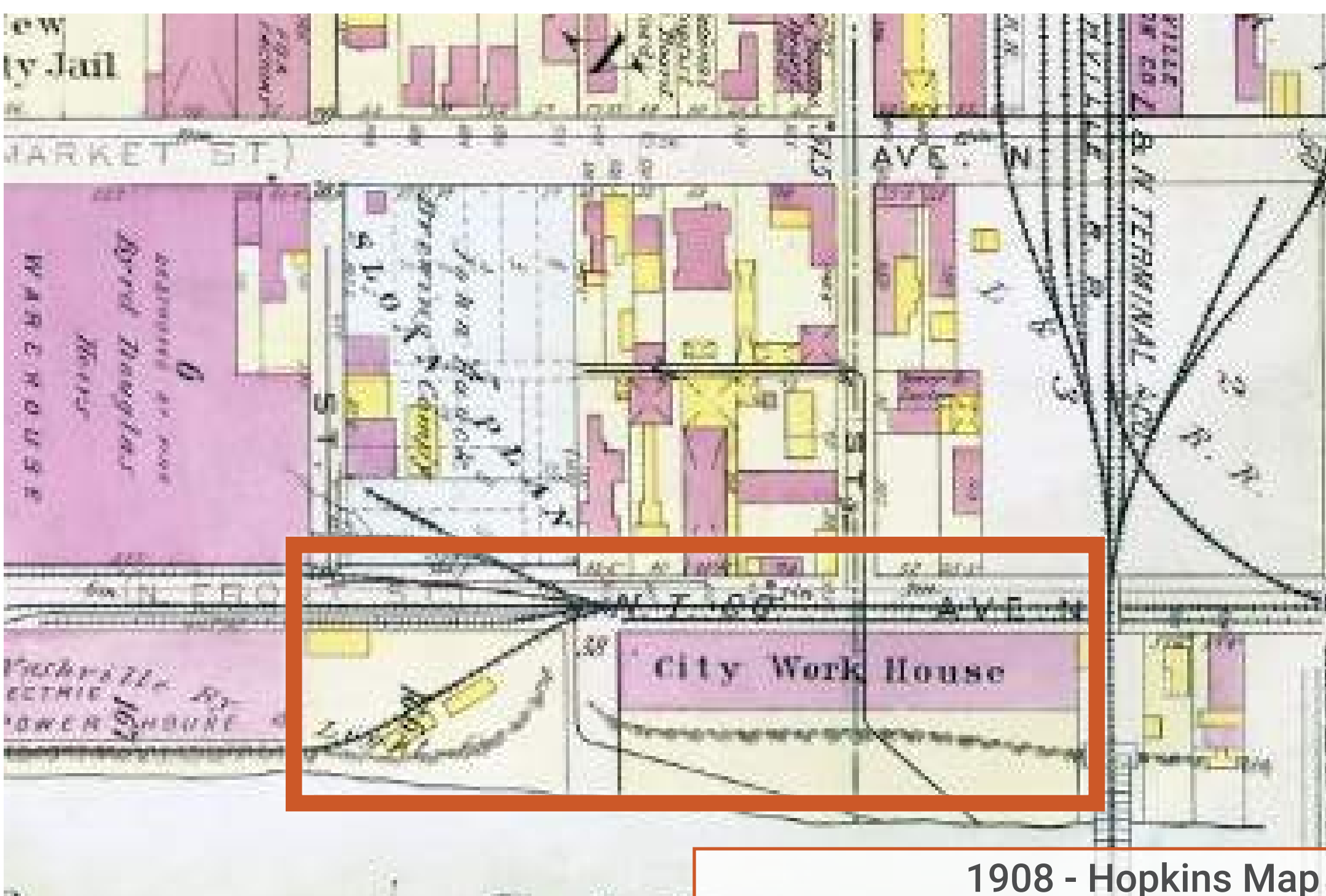
1864 - L&N Railroad Bridge
(Repaired bridge after Confederate soldiers set it on fire. Served until 1867 when it was replaced with iron trusses.)



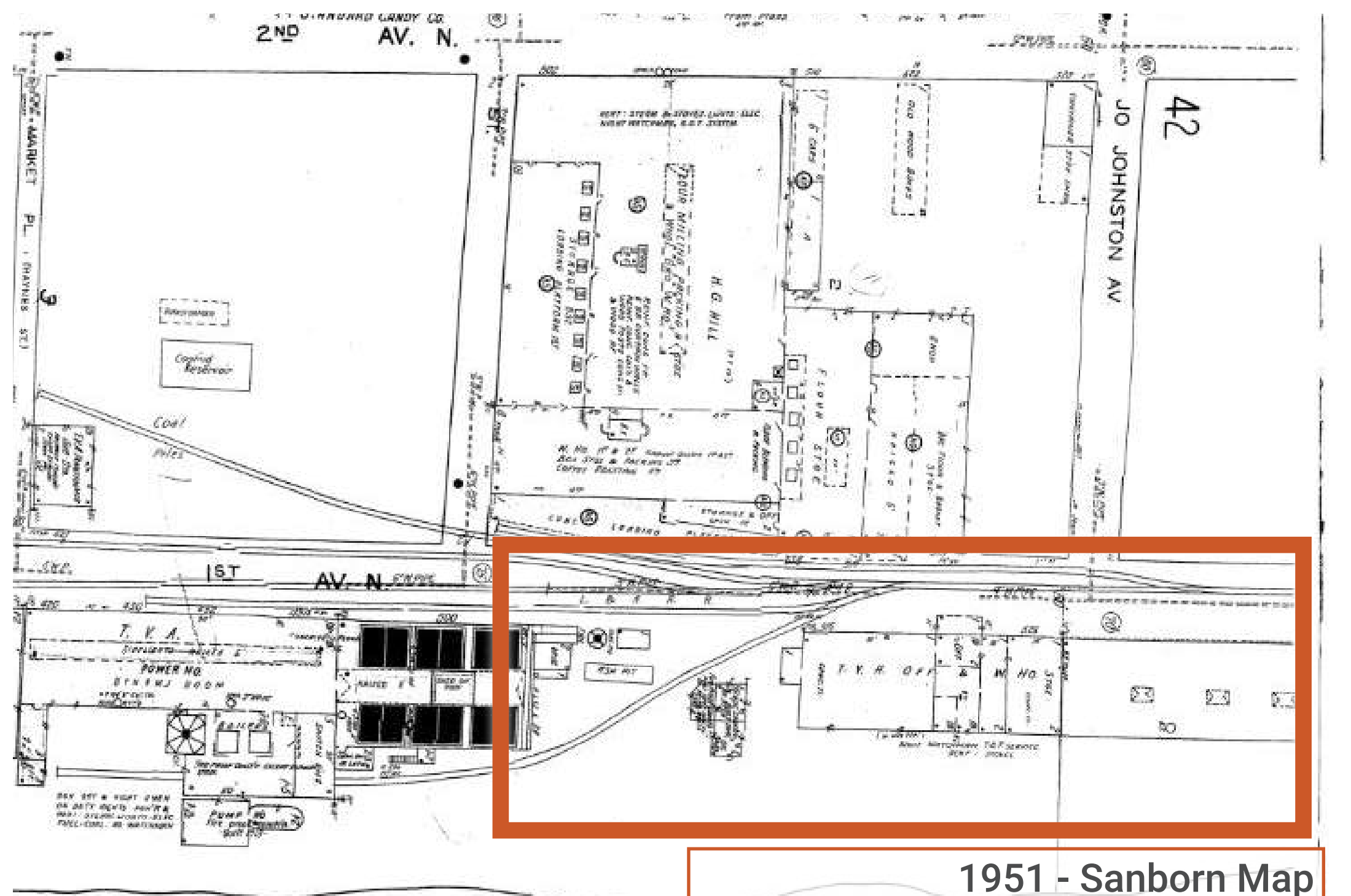
1888 - Nashville bird's eye view map



1909 - View of Woodland Street Bridge.
The L&N Railway bridge is seen beyond.



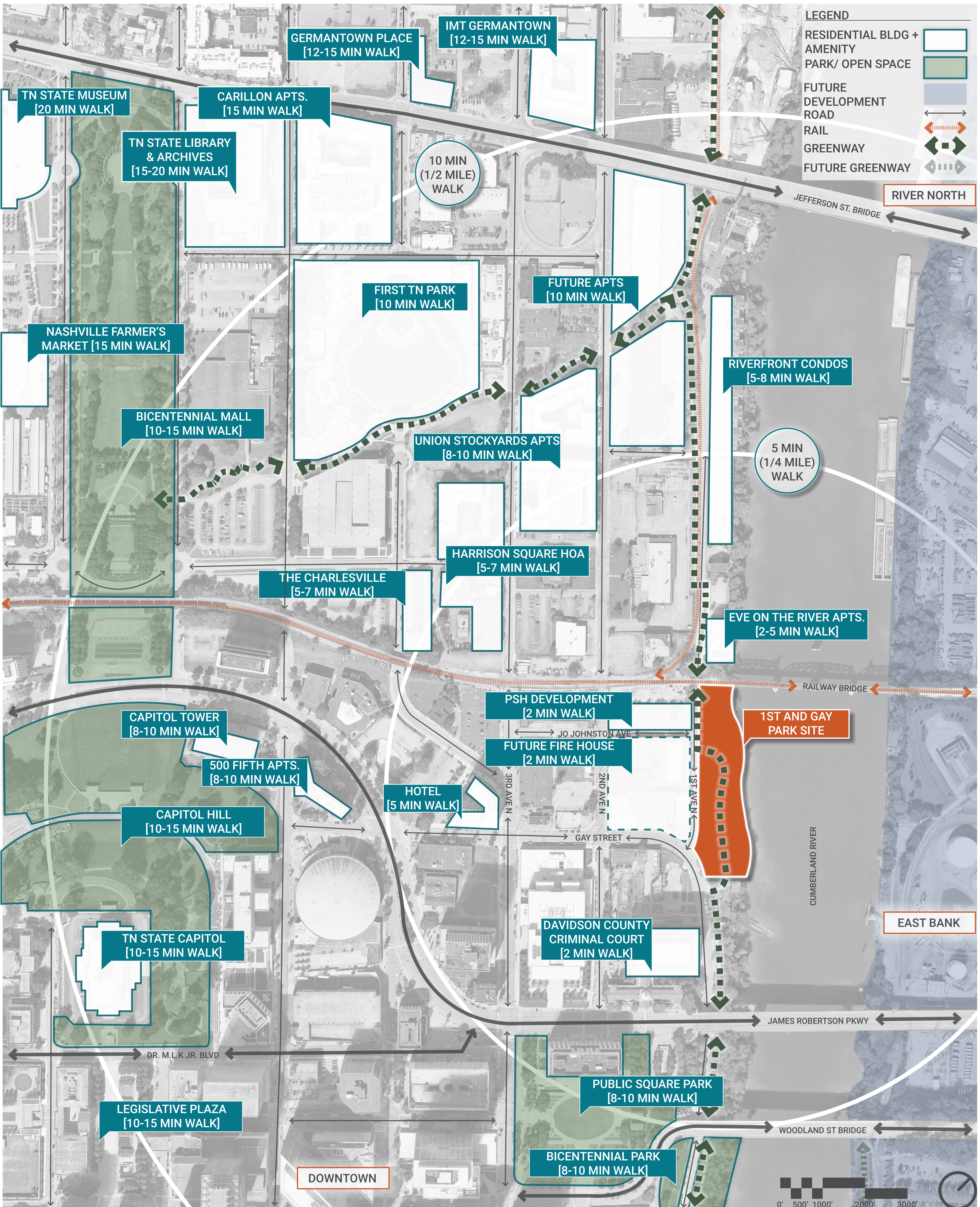
1908 - Hopkins Map



1951 - Sanborn Map

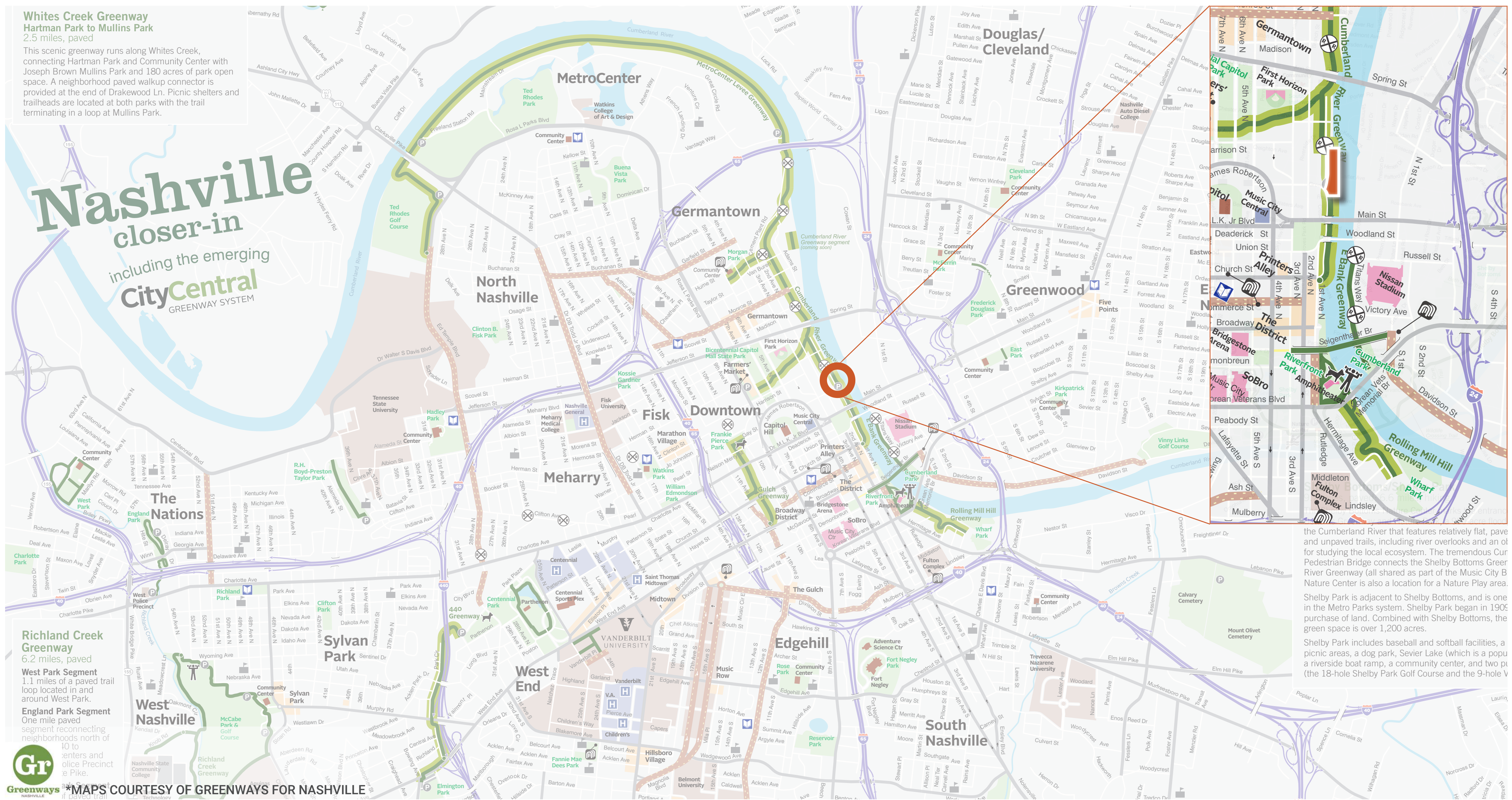
1st + Gay St. Park

CONTEXT [NEIGHBORHOOD]



1st + Gay St. Park

Context [Greenways + Parks]



ARE YOU A REGULAR VISITOR/USER OF THE CUMBERLAND RIVER GREENWAY?

YES

NO

IF YES, HOW OFTEN DO YOU VISIT OR USE THE GREENWAYS?

DAILY WEEKLY MONTHLY SOMETIMES NEVER

WHAT MODE OF TRANSPORTATION DO YOU USE TO ACCESS THE GREENWAY?

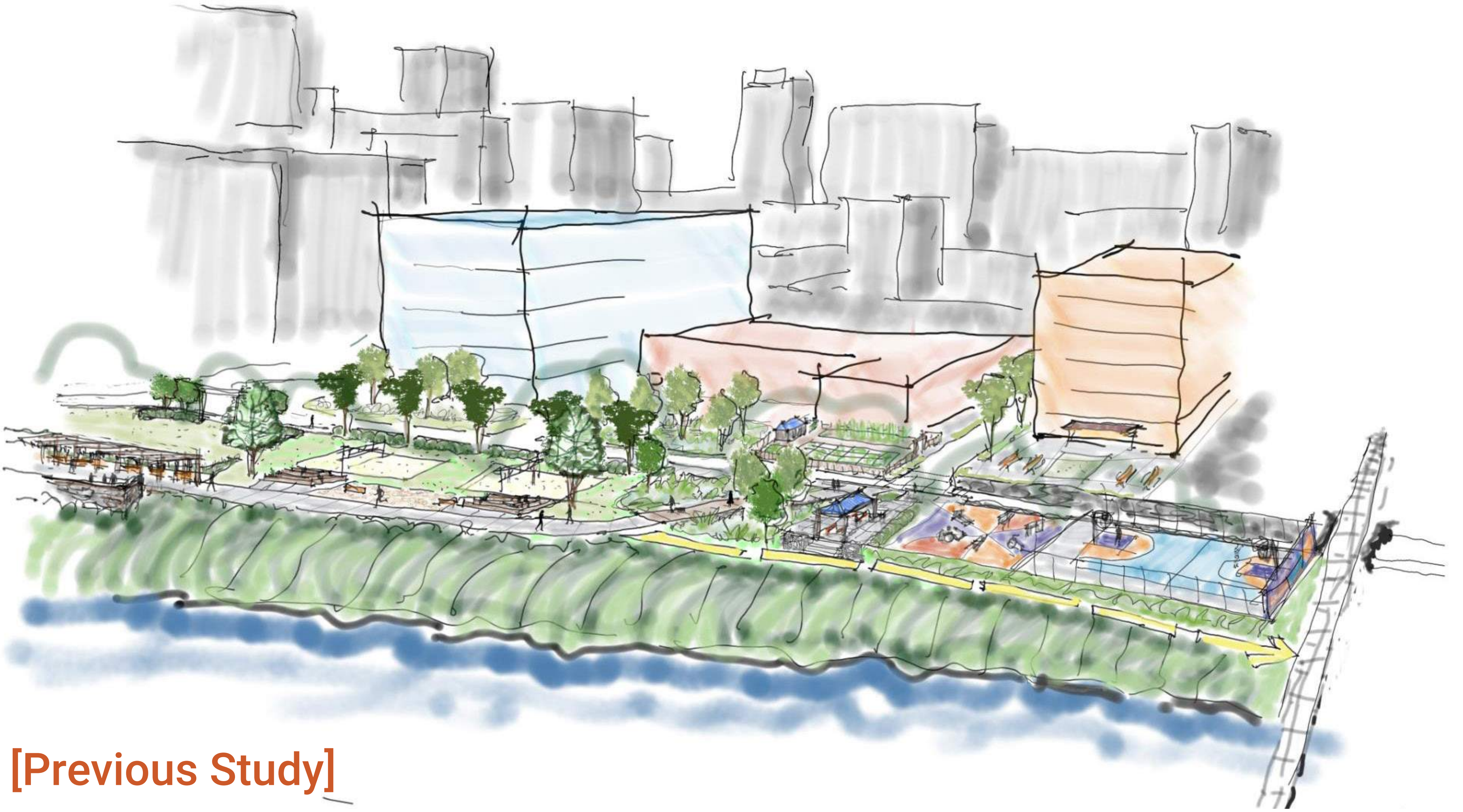
WALK BIKE CAR BUS OTHER

WHAT HAVE YOU NOTICED OR WHY HAVE YOU STOPPED AT THIS EXISTING SITE ALONG THE GREENWAY?

WHAT PARK AMENITIES OR ELEMENTS WOULD YOU LIKE TO SEE ALONG OUR GREENWAYS?

1st + Gay St. Park

Create your new neighborhood park



[Previous Study]

WHAT USES WOULD YOU LIKE TO HAVE IN YOUR NEW 1ST AND GAY NEIGHBORHOOD PARK?

1st + Gay St. Park

Vote for your favorite park activity


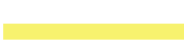





PLACE A STICKER
ON YOUR TOP 3
PARK ACTIVITIES



1st + Gay St. Park

Your New Neighborhood Park

LEGEND

- EDGE OF WATER 
- RETAINING WALL 
- SITE STONE WALL 
- BRIDGE ABUTMENTS 
- RAIL 
- GREENWAY 
- STEEP SLOPES 
- PROPERTY LINE 