

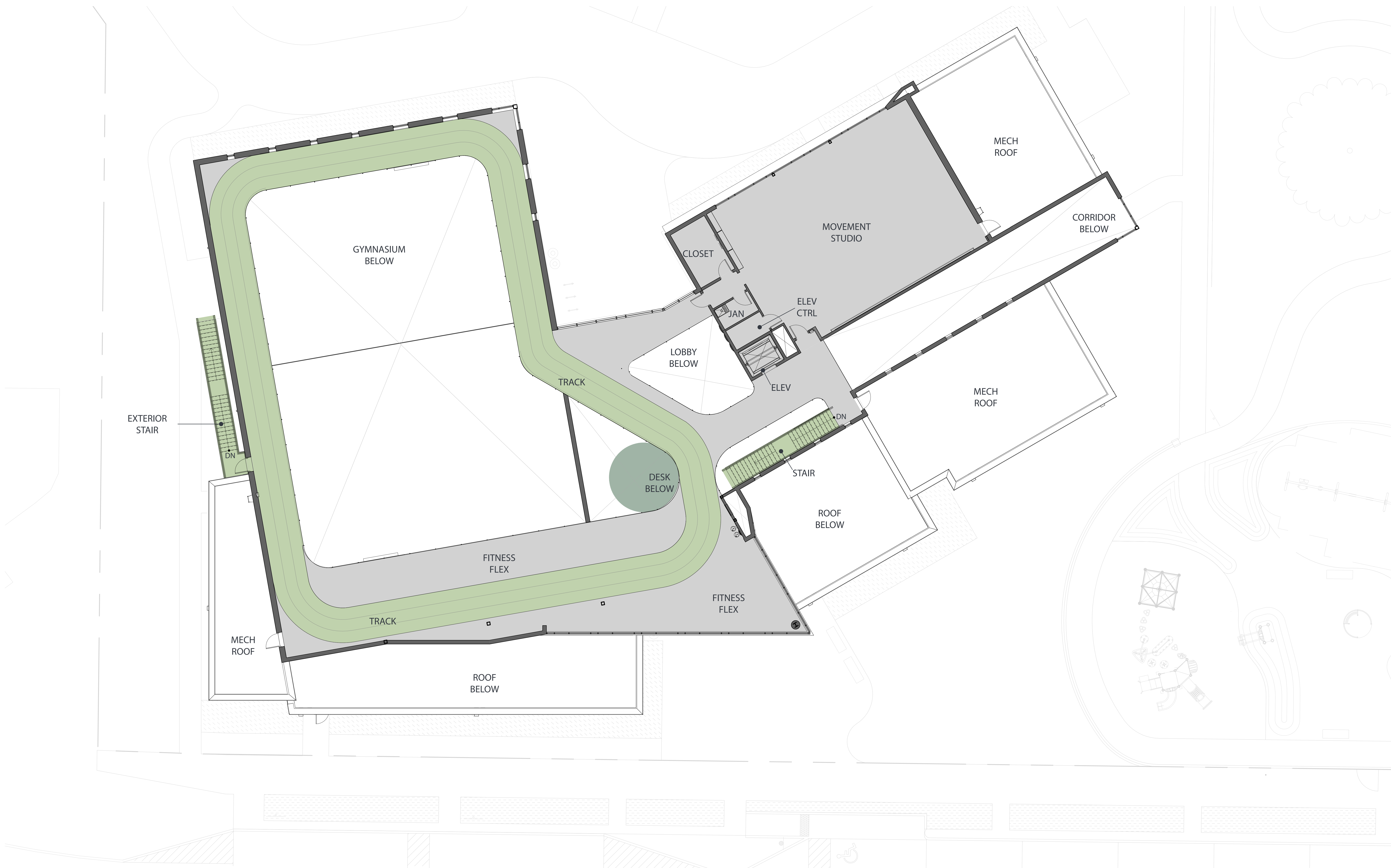


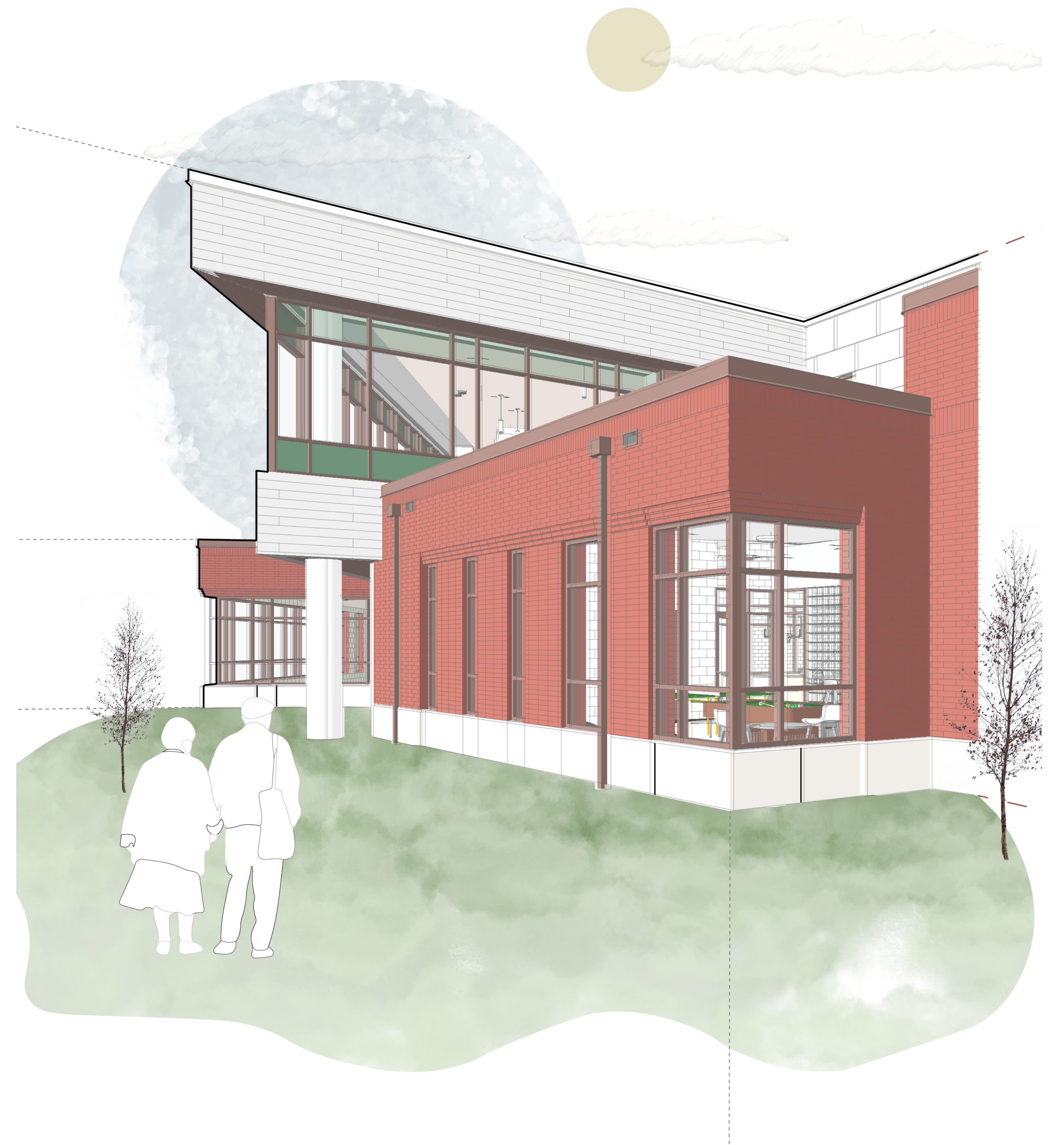
OLD HICKORY COMMUNITY CENTER

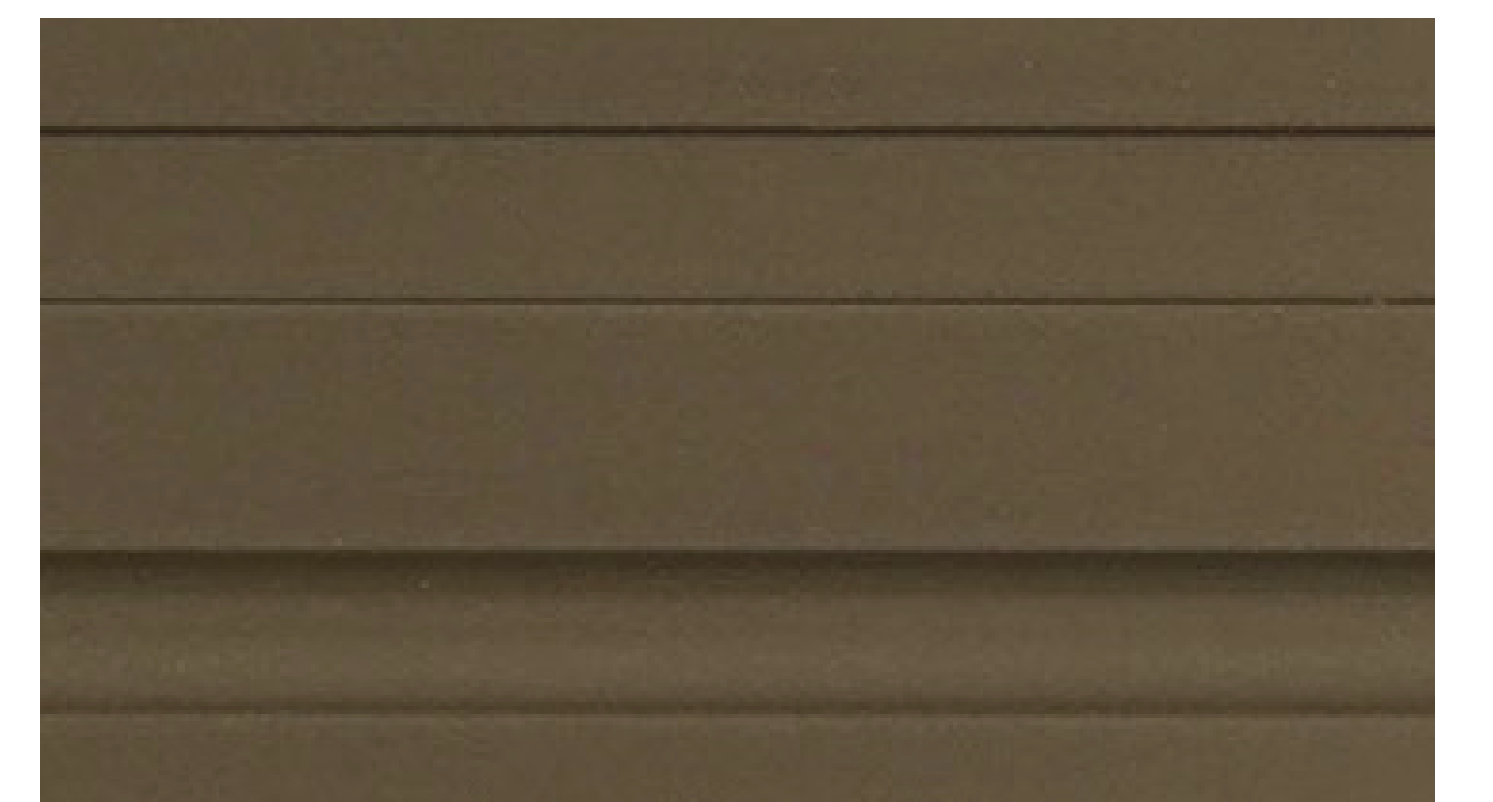
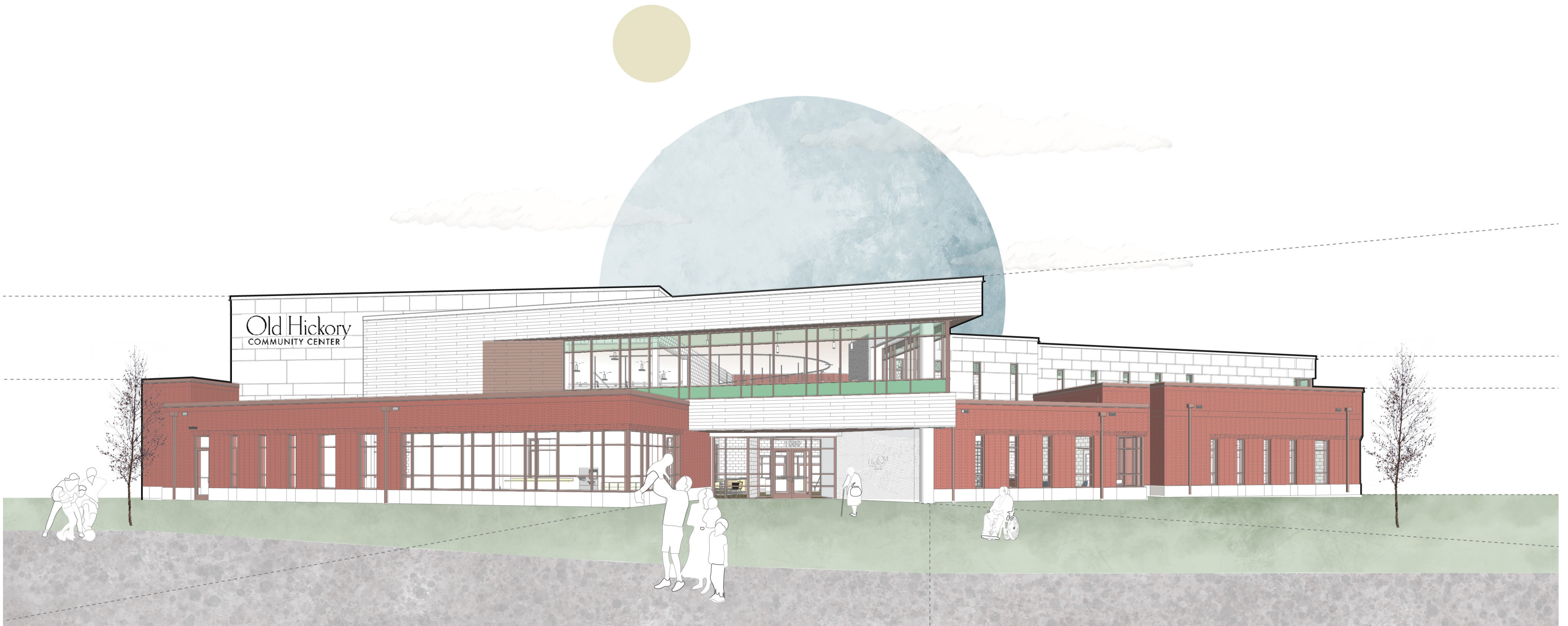
– EXTERIOR RENDERING –

KIMLEY HORN + EOA ARCHITECTS











BICYCLE FACILITIES
 Promote bicycling and transportation efficiency and reduce vehicle distance traveled. Improve public health by encouraging utilitarian and recreational physical activity.



REDUCED PARKING FOOTPRINT
 Minimize the environmental harms associated with parking facilities, including automobile dependence, land consumption, and rainwater runoff.



PROTECT OR RESTORE HABITAT
 Conserve existing natural areas and restore damaged areas to provide habitat and promote biodiversity.



OPEN SPACE
 Create exterior open space that encourages interaction with the environment, social interaction, passive recreation, and physical activities.



HEAT ISLAND REDUCTION
 Minimize inequitable effects on microclimates and human, especially frontline communities, and wildlife habitats by reducing heat islands.



WATER USE REDUCTION
 Reduce indoor and outdoor potable water consumption and preserve no and low-cost potable water resources.



OPTIMIZE ENERGY PERFORMANCE
 Achieve above standard energy performance to reduce environmental and economic harms associated with excessive energy use that disproportionately impact frontline communities.



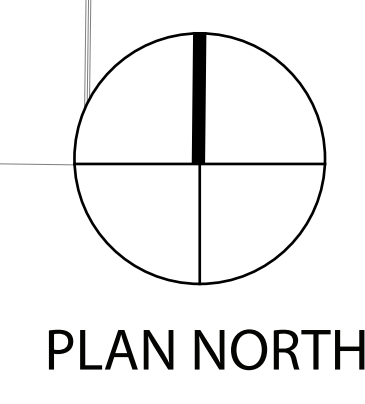
CONSTRUCTION AND DEMOLITION WASTE MANAGEMENT
 Reduce construction and demolition waste disposed of in landfills and incineration facilities through waste prevention and by reusing, recovering, and recycling materials, and resources for future generations.



QUALITY VIEWS
 Give building occupants a connection to the natural outdoor environment by providing quality views.



INNOVATION
 Achieve innovative performance to benefit human and environmental health and equity.







OLD HICKORY COMMUNITY CENTER

- NORTH FACING AERIAL -

KIMLEY HORN + EOA ARCHITECTS



