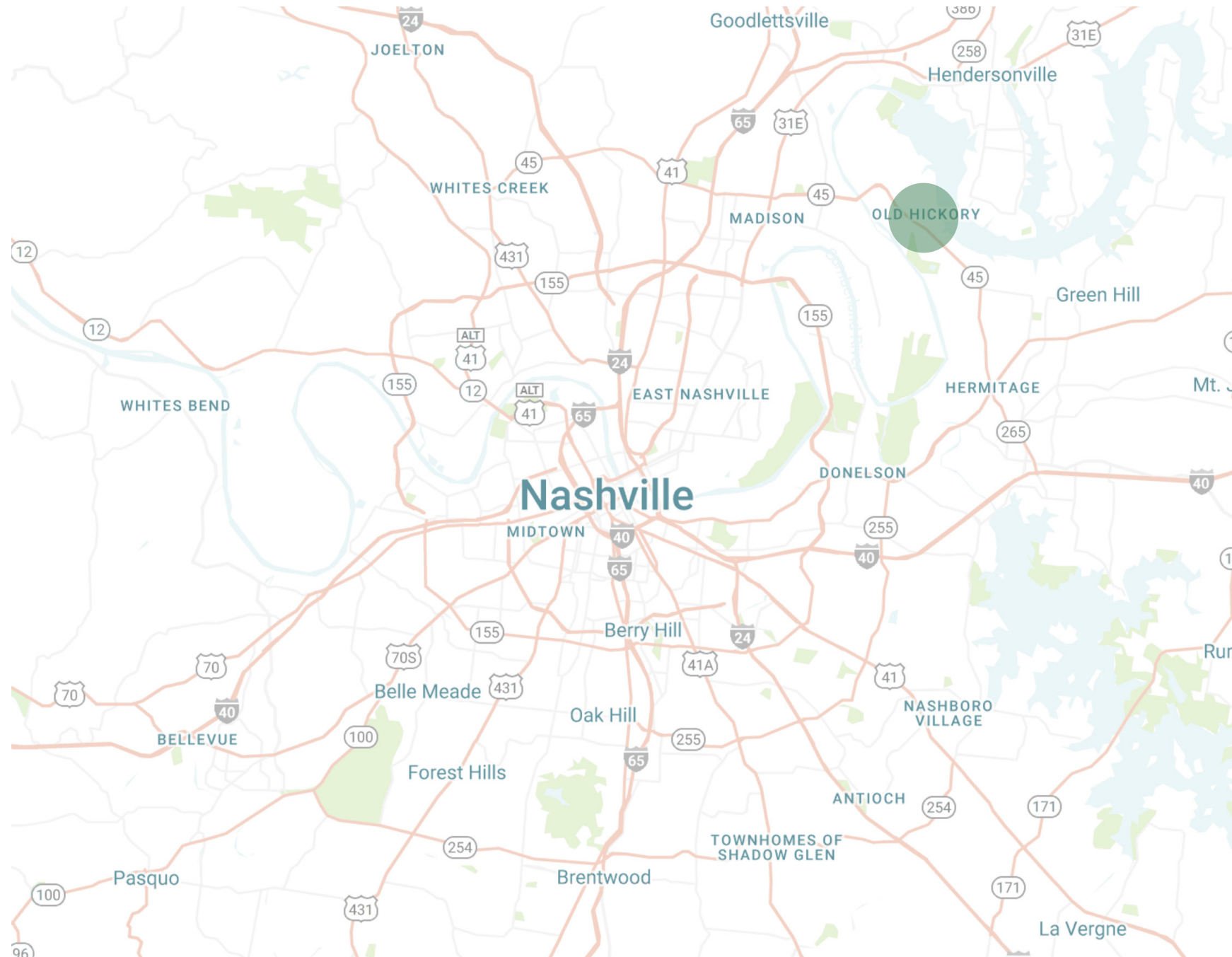
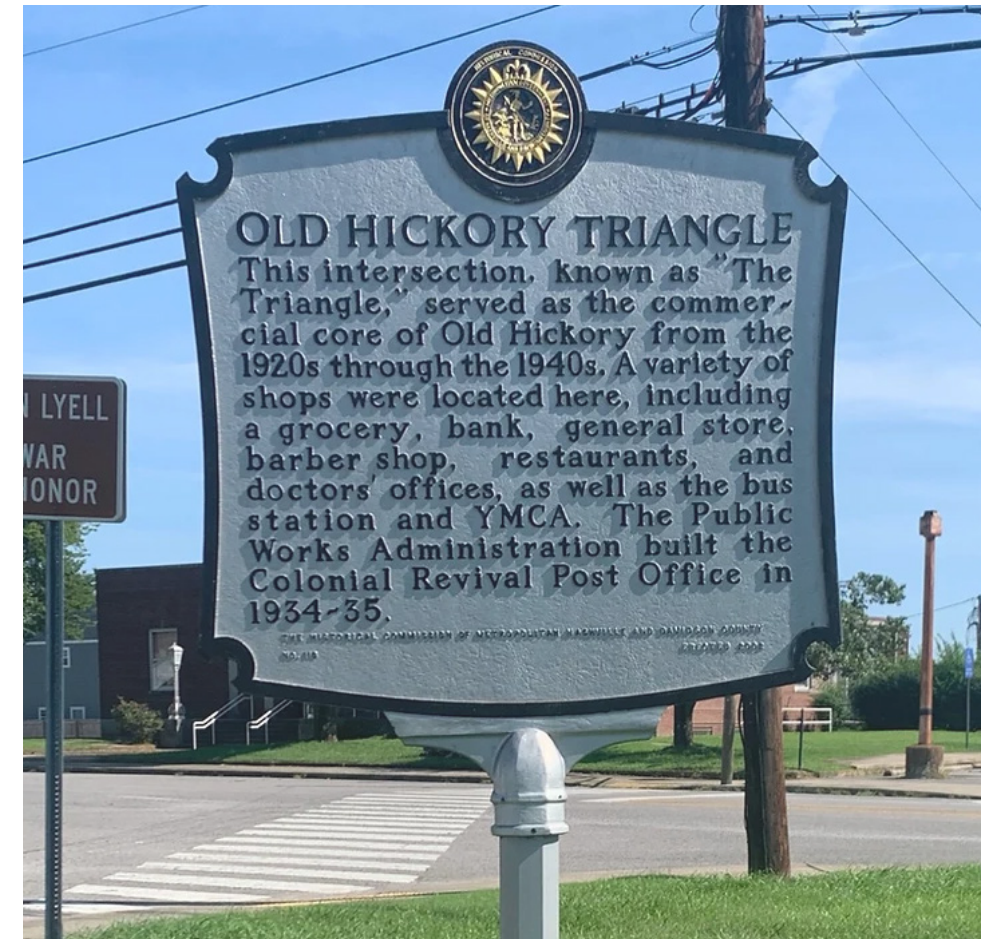




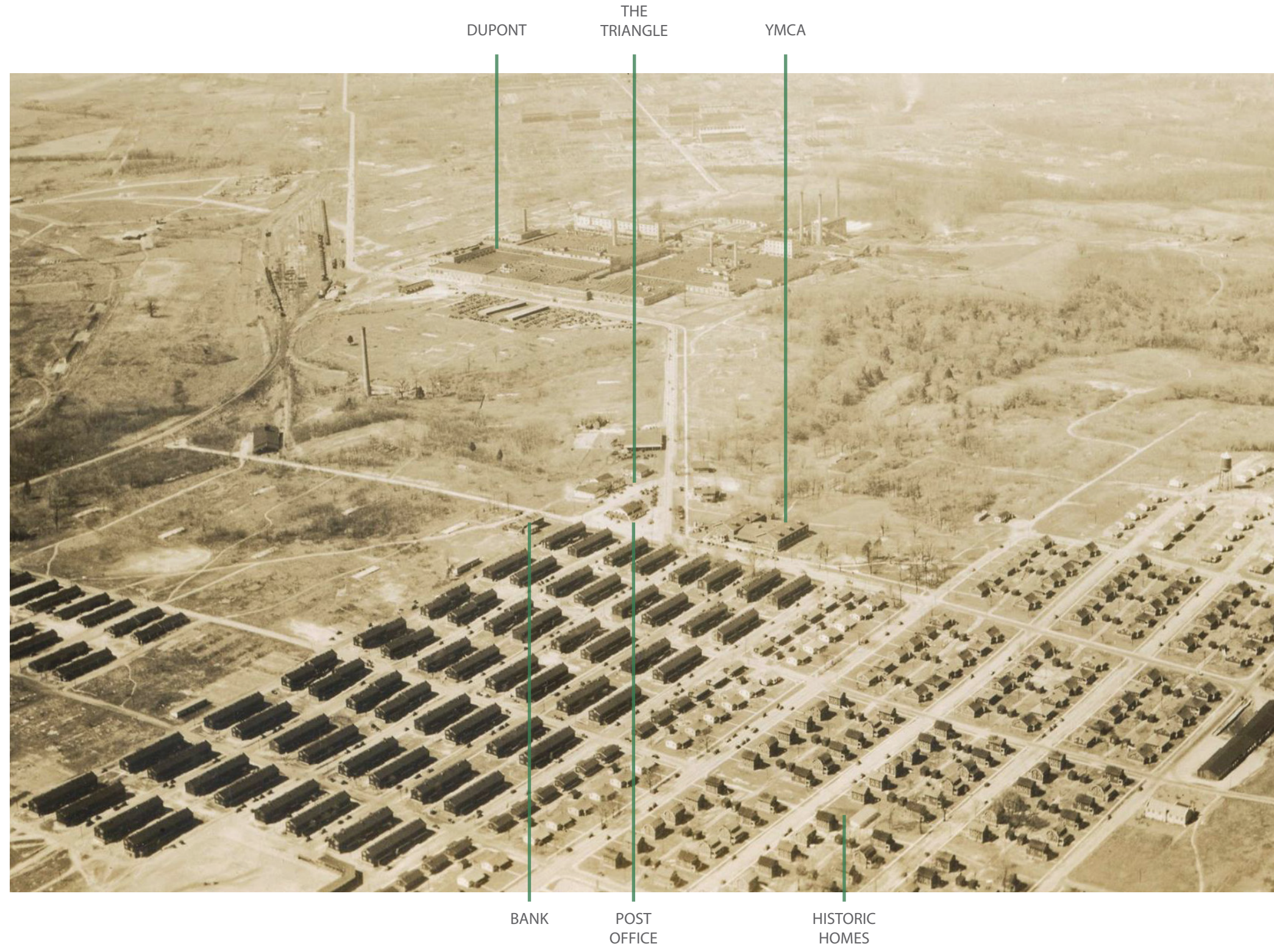
Old  
Hickory  
COMMUNITY  
CENTER





“...the Old Hickory Triangle, a triangle whose history is anchored by a post office, a grocery store, and a memorial park dedicated to veterans”

-Kris Brummett





RAYON **DU PONT** DIVISION  
MADE IN U.S.A.

**DU PONT**®

*Old Hickory History*



#OldHickoryHistory

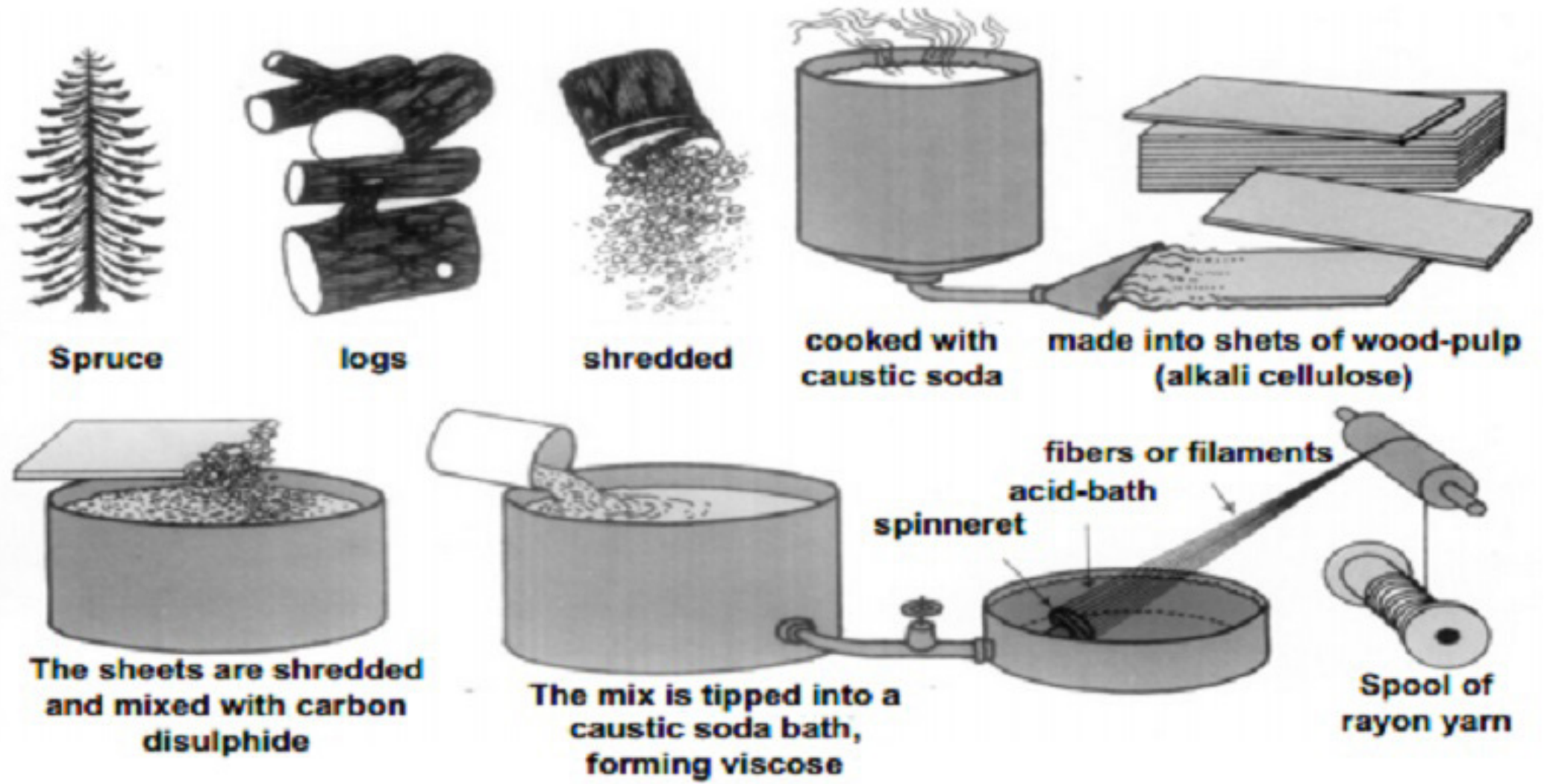
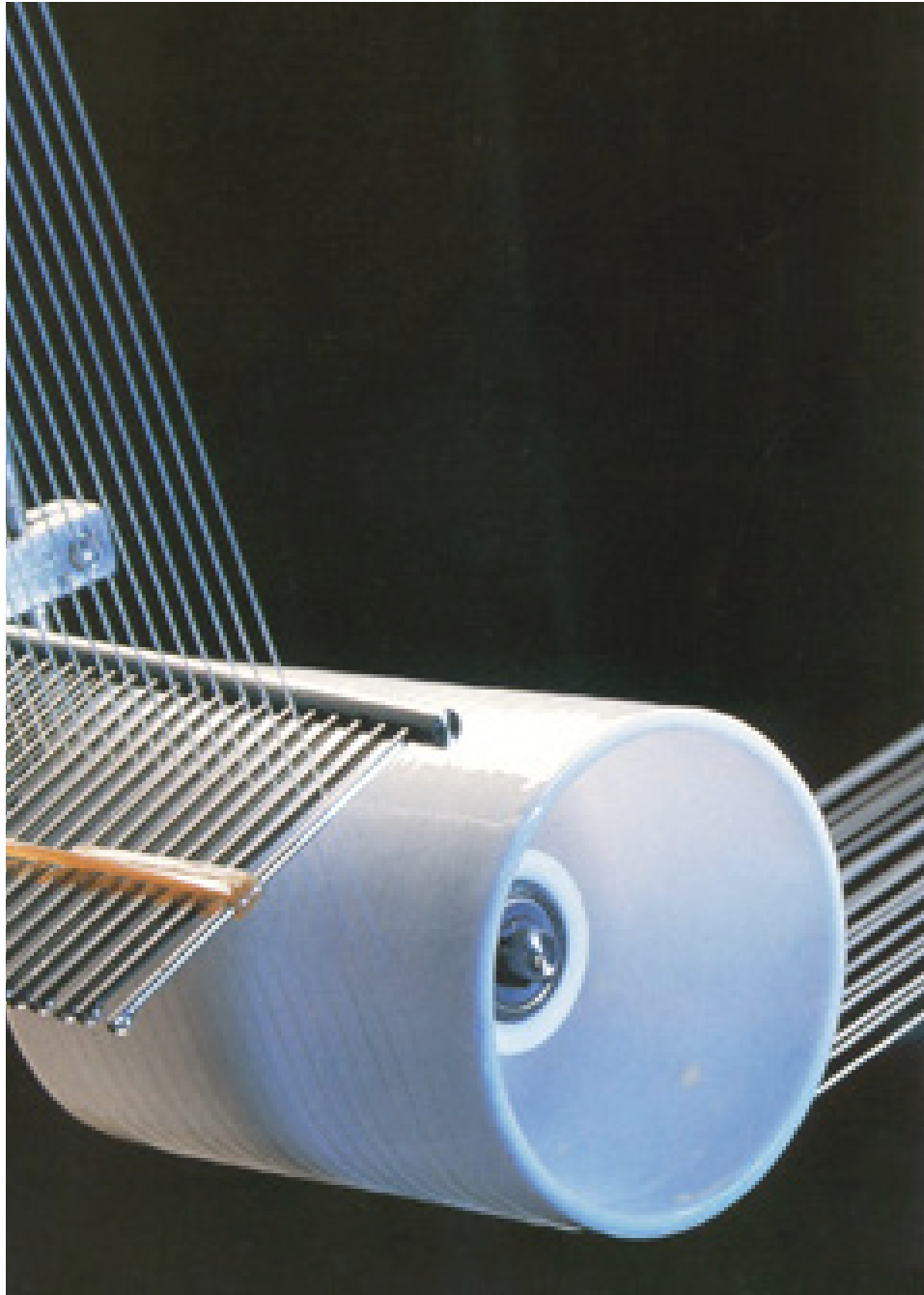
**Dupont Rayon Co.**

Offers employment to young ladies and boys 18 years of age and over. *Smithville Review Smithville Tenn 5-19-26*

Clean, wholesome working conditions are maintained with good hours and good pay.

Excellent living conditions provided for girls on cost basis in new Dormitory with all modern conveniences. Competent matrons on duty at all times.

Apply immediately, Employment Office  
**DUPONT RAYON COMPANY**  
OLD HICKORY, TENNESSEE



**Manufacturing process of rayon**









### The Haskell

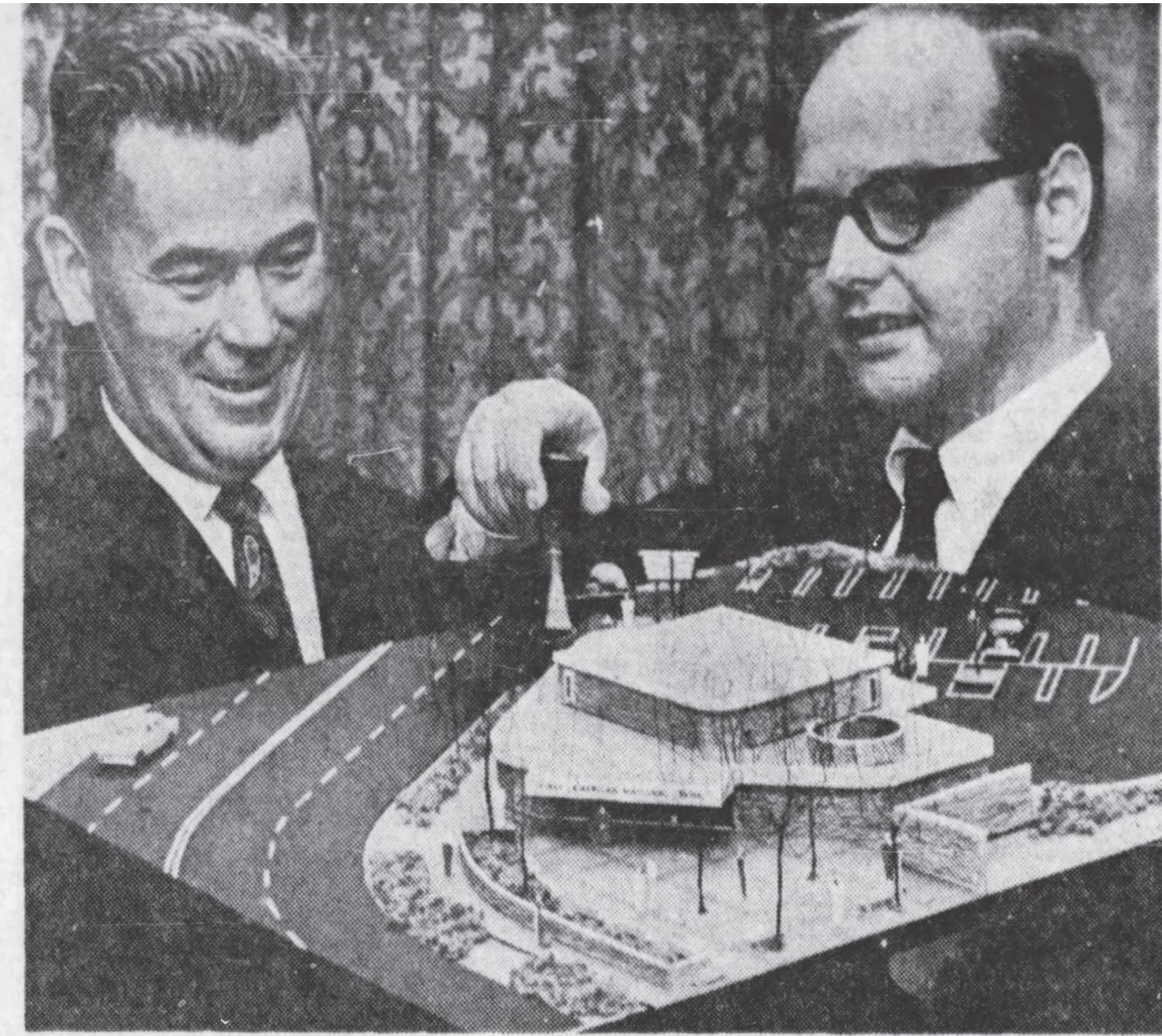
Standard frame construction, roof and sides covered with composition shingles. Interior finished with beaver-board. Lower floor has living-room, dining-room, kitchen and pantry. Second floor has three bedrooms, clothes closets and bath. Ventilated attic above second story. Covered front porch full width of house.

SECOND FLOOR

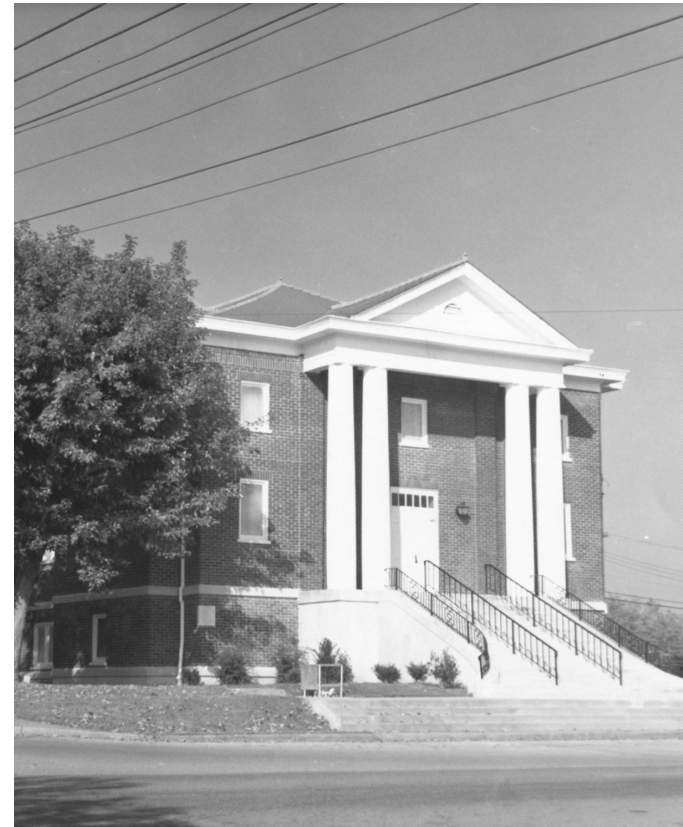
FIRST FLOOR

Page Thirteen





*How Old Hickory Community Center Will Look*



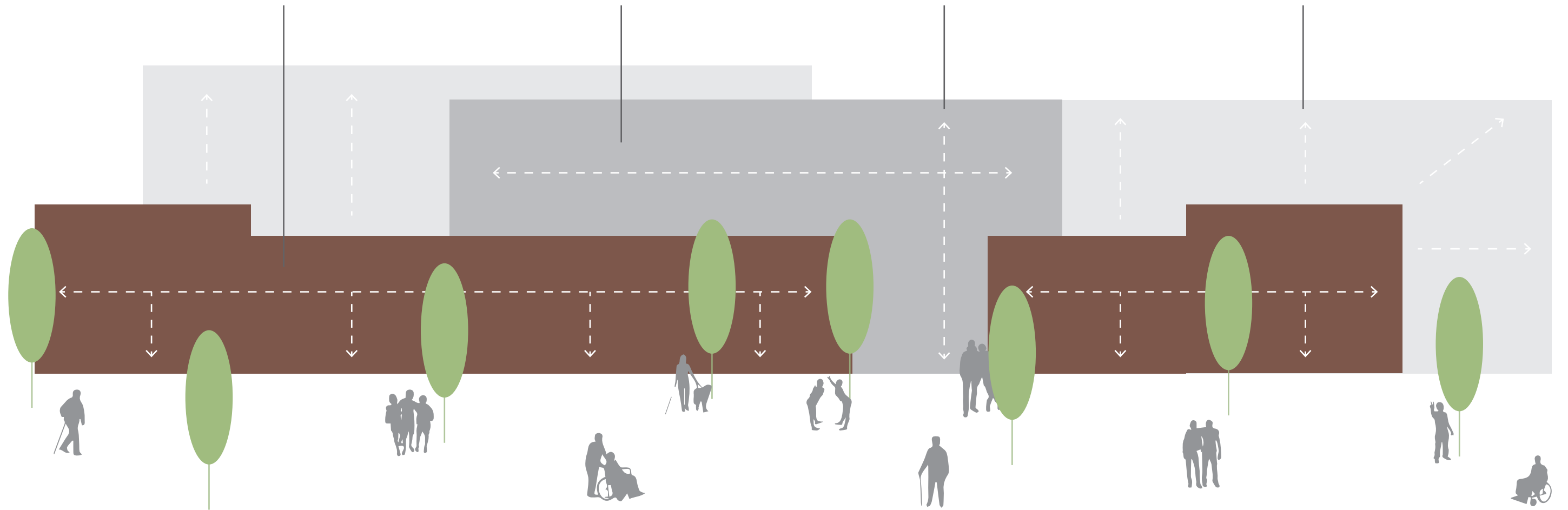


ANCHOR THE BUILDING THROUGH HISTORIC MATERIALS AND DETAILING

CONNECT THE TWO LEVELS OF MASSING AND ILLUSTRATE THE ENERGY OF THE INTERIOR PROGRAM ON THE EXTERIOR

CREATE CONCEPTUAL TENSION INSPIRED BY DUPONT RAYON PRODUCTION

BLEND HISTORIC AND CONTEMPORARY DESIGN THROUGH MONUMENTAL, CIVIC MATERIALS





STONE WATERTABLE/BASE



WINDOW INSETS WITH TEXTURE VARIATION

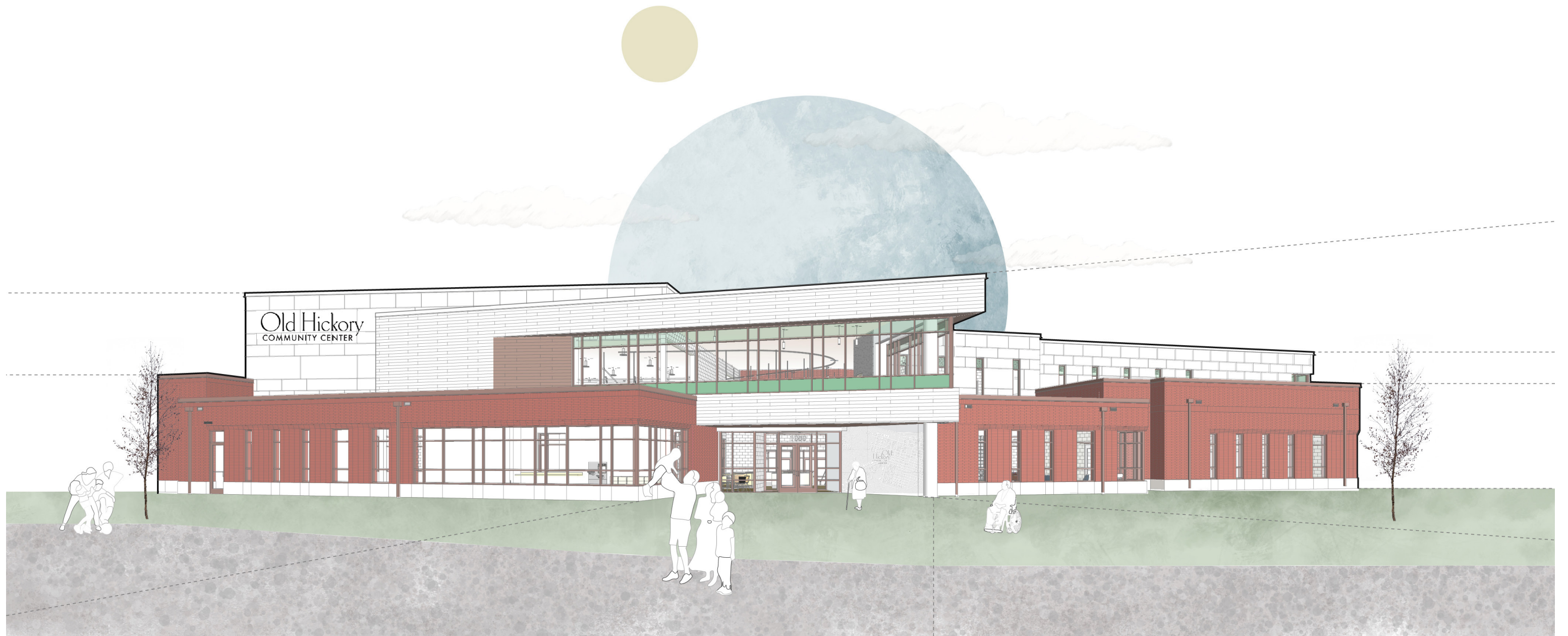


REPETITIVE WINDOW PATTERN



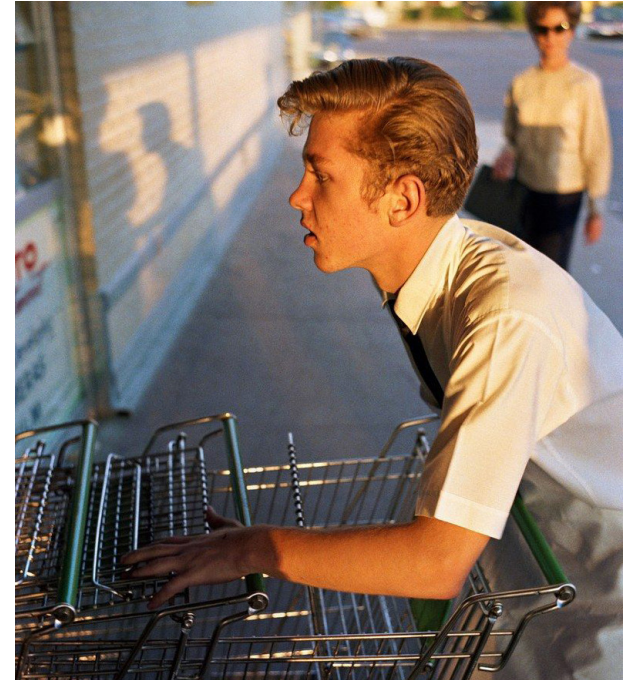


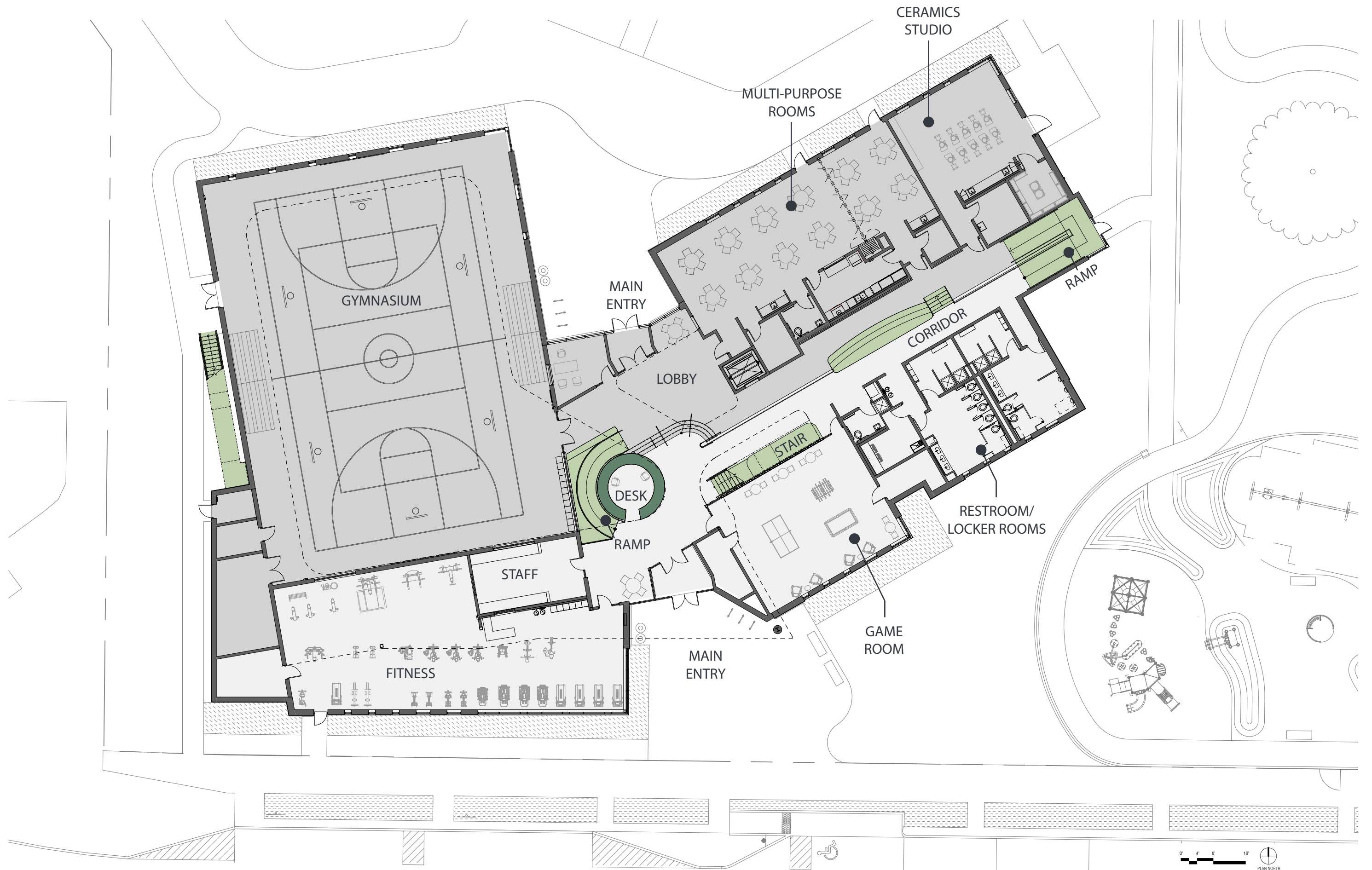




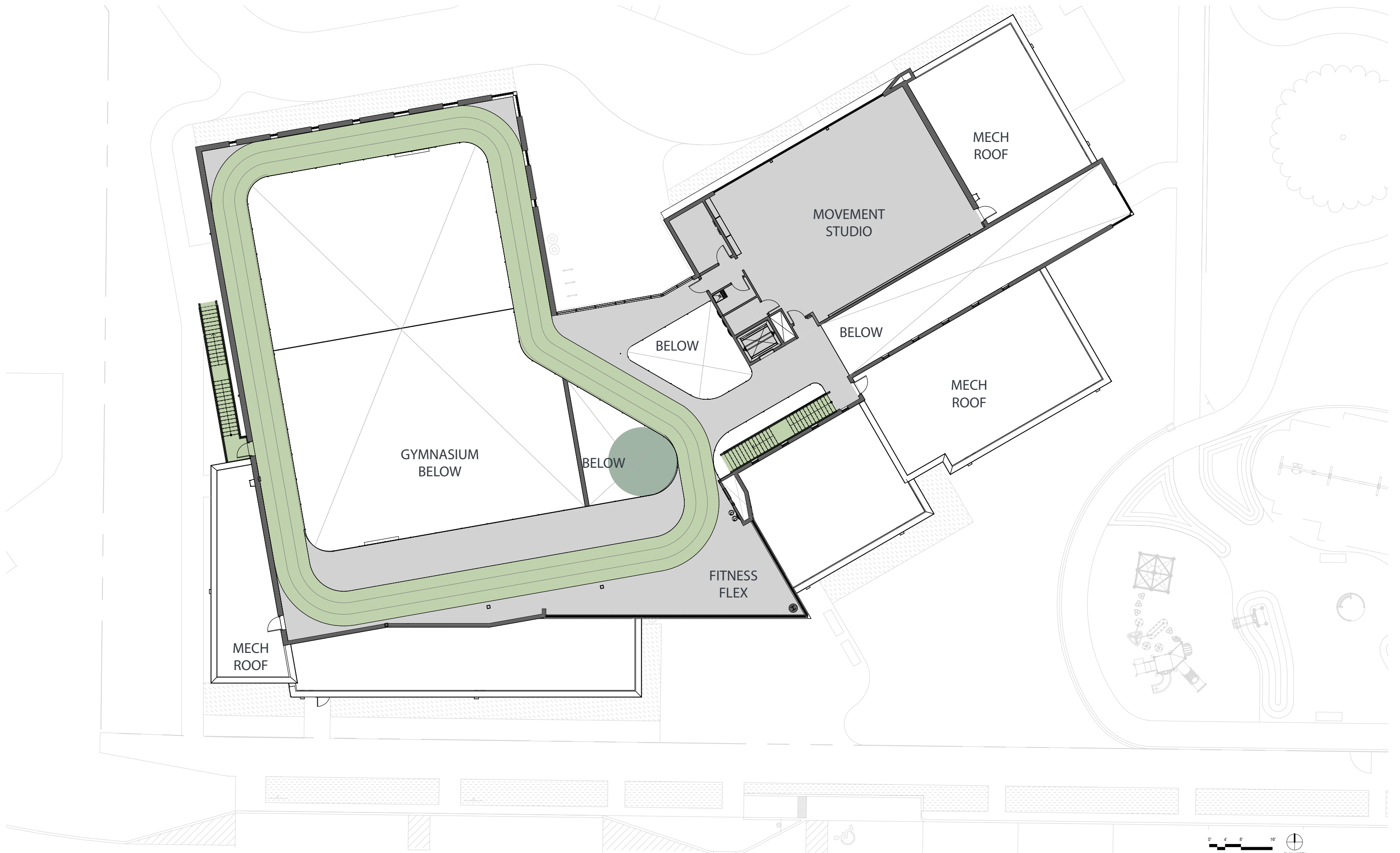




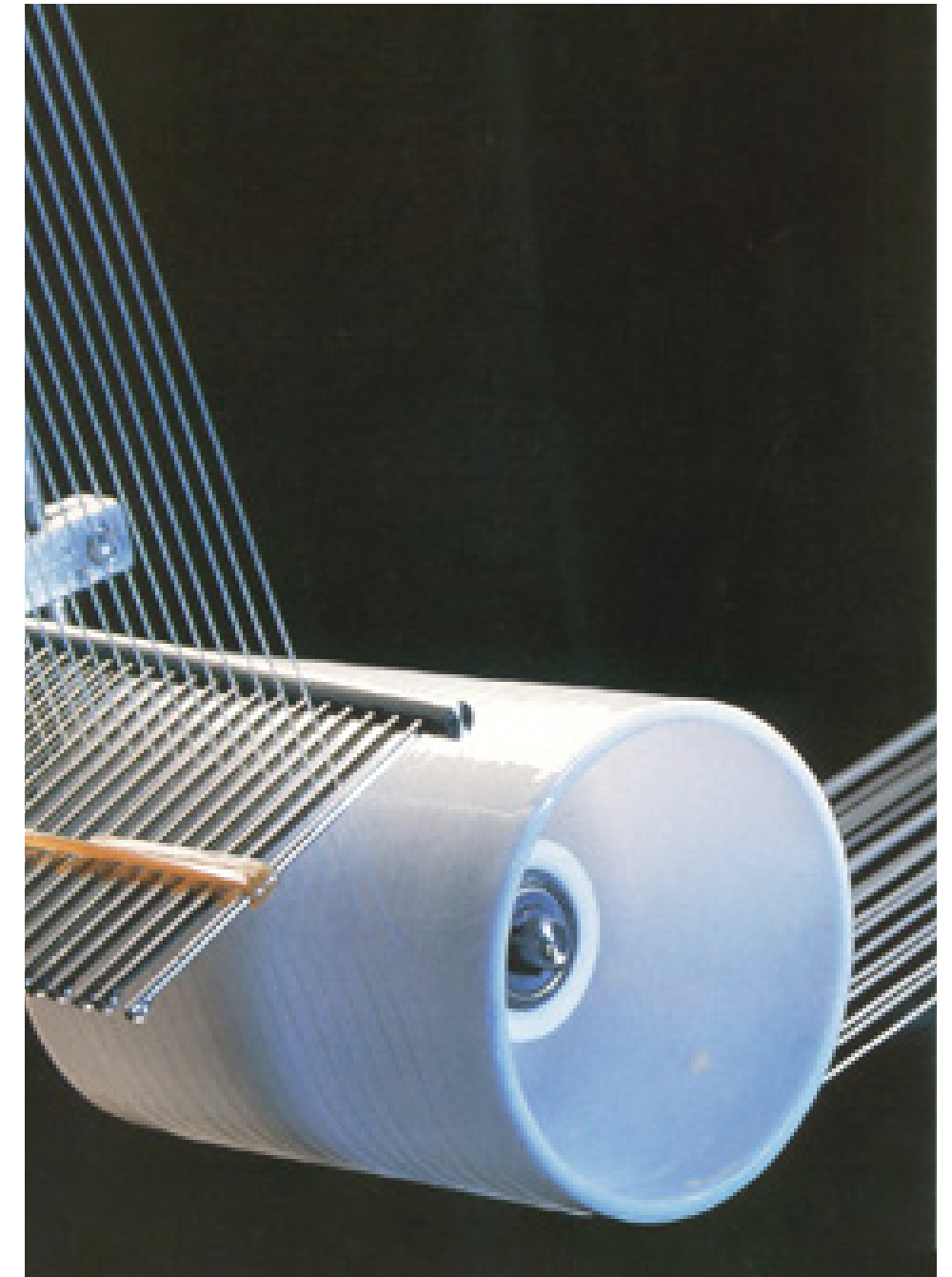
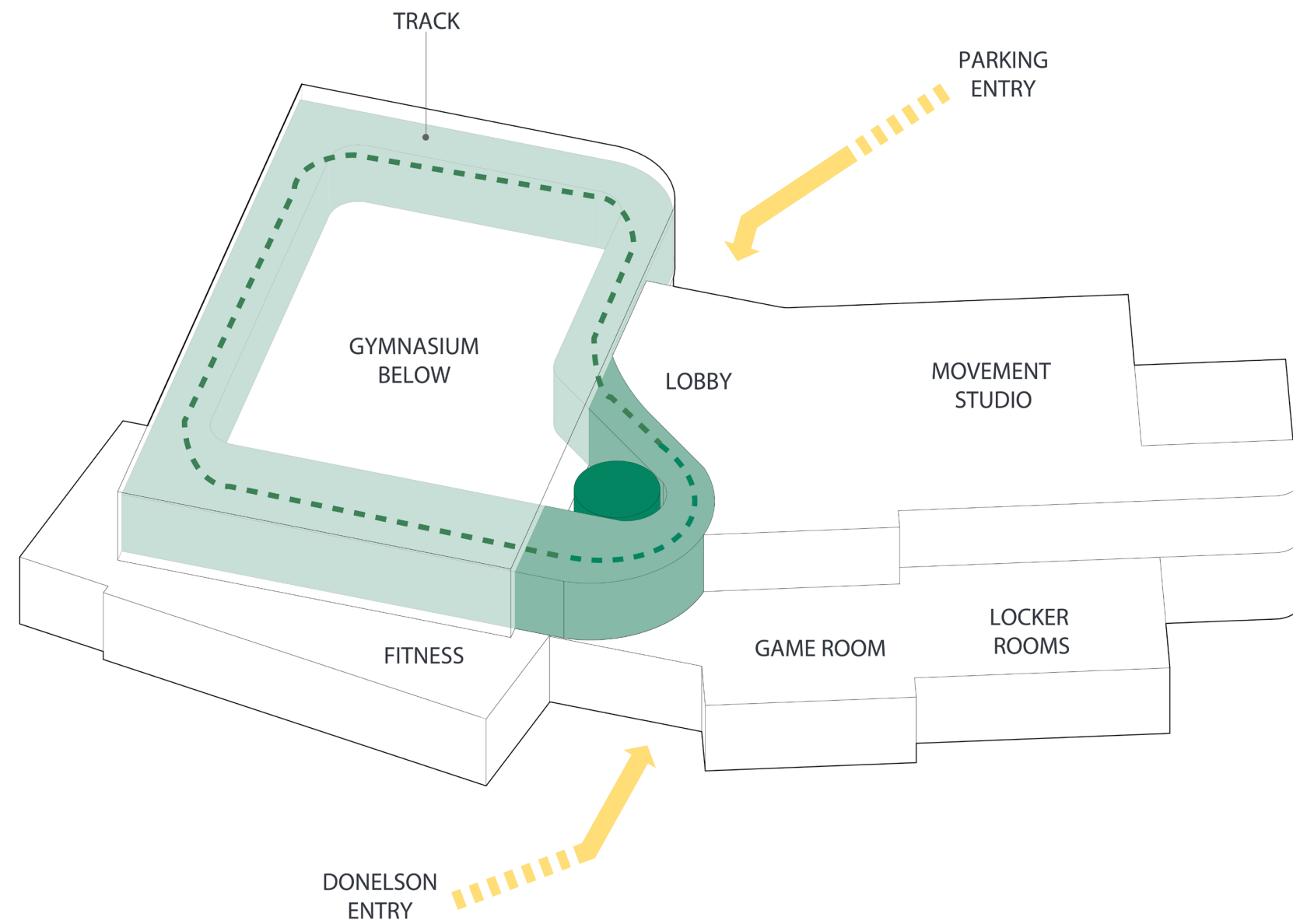




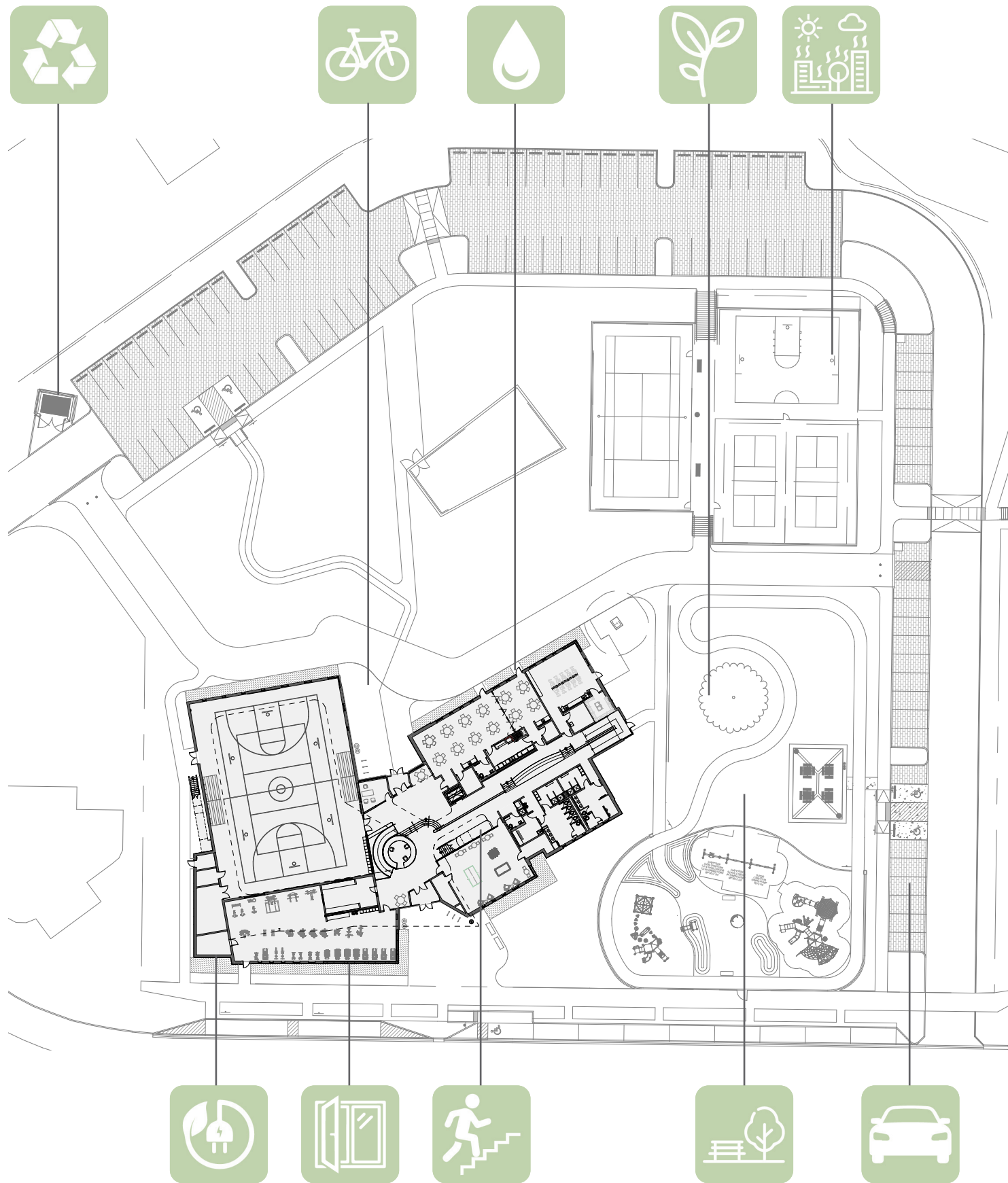
DONELSON











**BICYCLE FACILITIES**

Promote bicycling and transportation efficiency and reduce vehicle distance traveled. Improve public health by encouraging utilitarian and recreational physical activity.



**REDUCED PARKING FOOTPRINT**

Minimize the environmental harms associated with parking facilities, including automobile dependence, land consumption, and rainwater runoff.



**PROTECT OR RESTORE HABITAT**

Conserve existing natural areas and restore damaged areas to provide habitat and promote biodiversity.



**OPEN SPACE**

Create exterior open space that encourages interaction with the environment, social interaction, passive recreation, and physical activities.



**HEAT ISLAND REDUCTION**

Minimize inequitable effects on micro climates and human, especially frontline communities, and wildlife habitats by reducing heat islands.



**WATER USE REDUCTION**

Reduce indoor and outdoor potable water consumption and preserve no and low-cost potable water resources.



**OPTIMIZE ENERGY PERFORMANCE**

Achieve above standard energy performance to reduce environmental and economic harms associated with excessive energy use that disproportionately impact frontline communities.



**CONSTRUCTION AND DEMOLITION WASTE MANAGEMENT**

Reduce construction and demolition waste disposed of in landfills and incineration facilities through waste prevention and by reusing, recovering, and recycling materials, and resources for future generations.



**QUALITY VIEWS**

Give building occupants a connection to the natural outdoor environment by providing quality views.

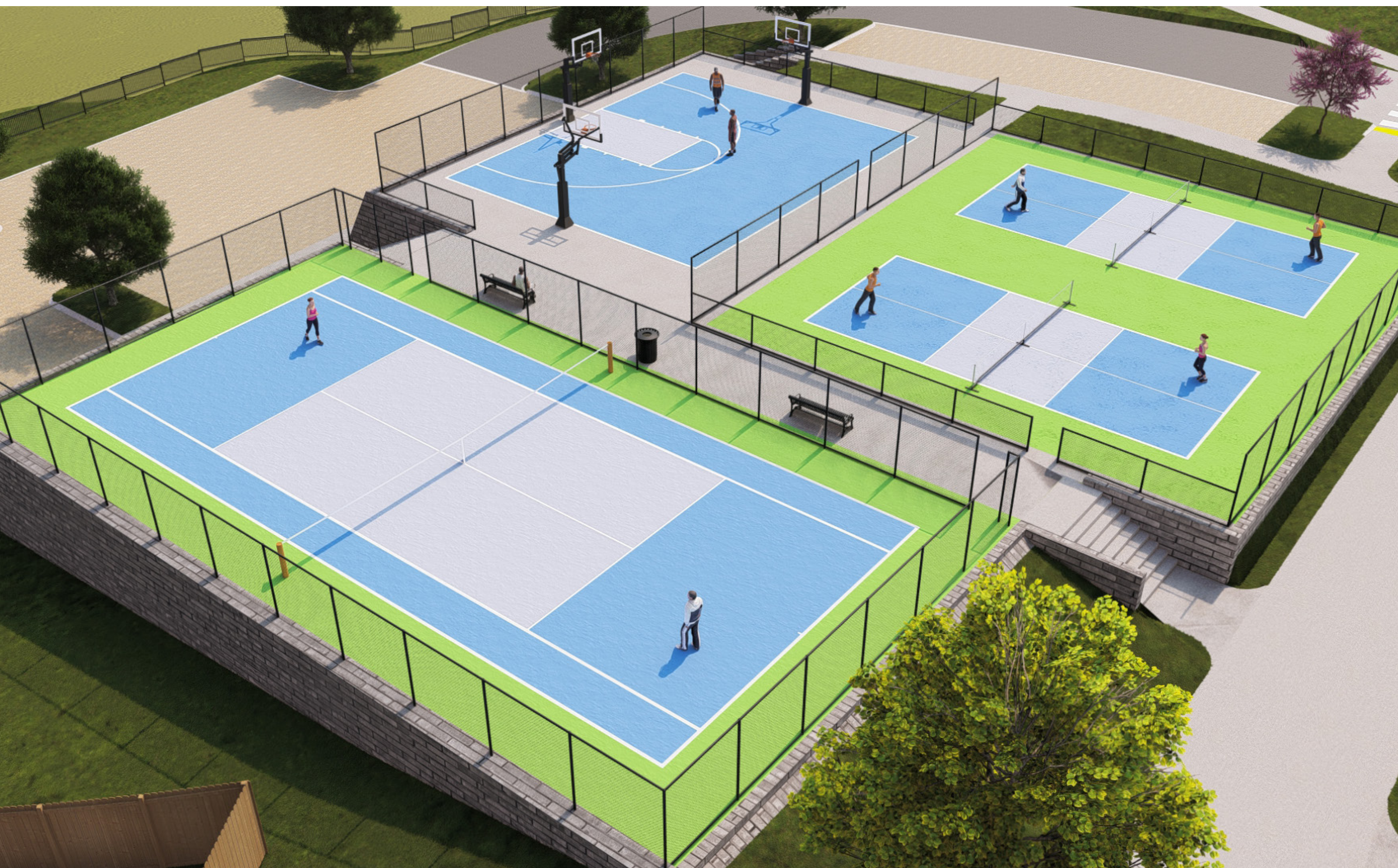


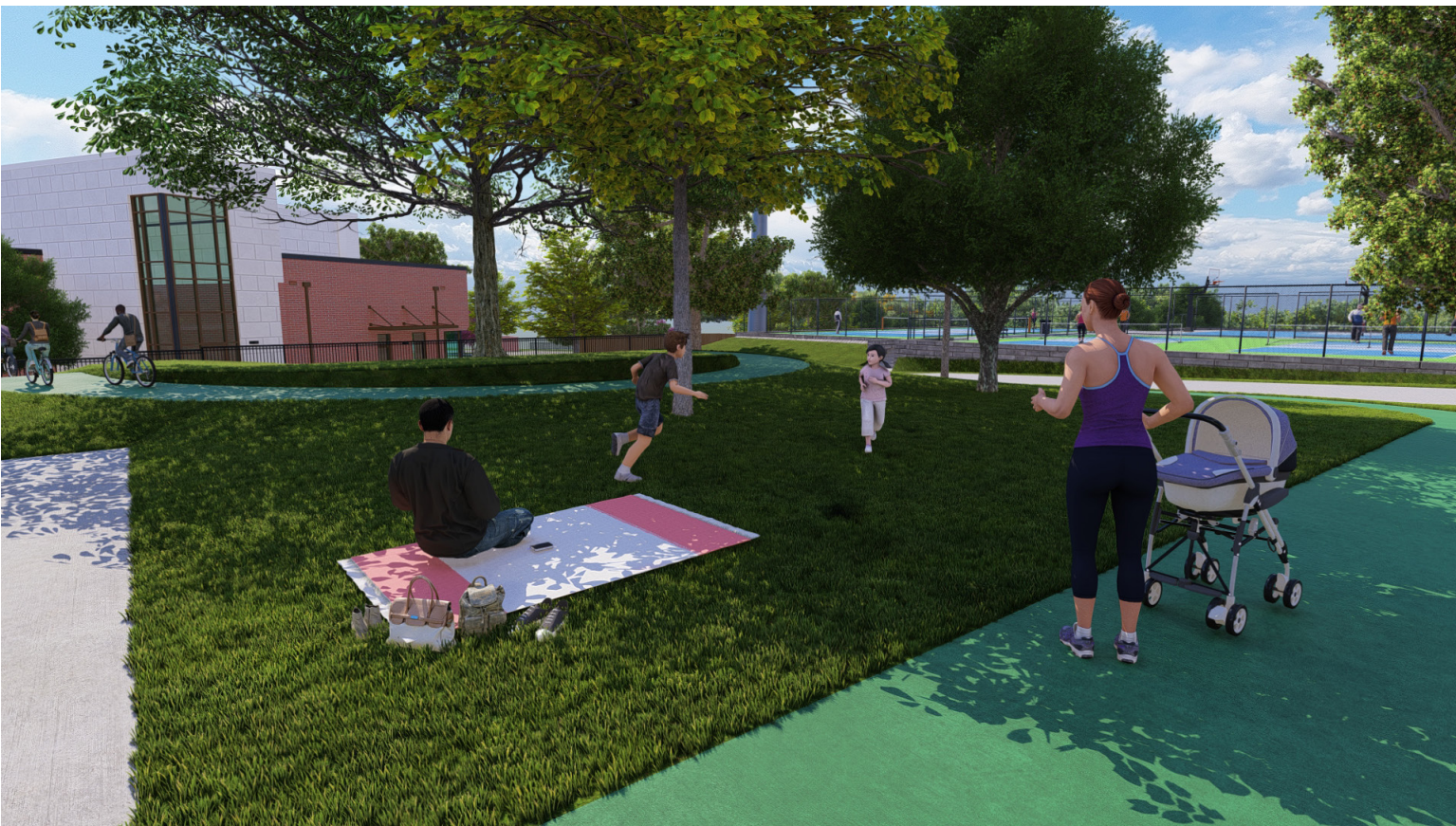
**INNOVATION**

Achieve innovative performance to benefit human and environmental health and equity.











ATILIO MURGA  
PUBLIC ART  
PROJECT MANAGER

**METRO ARTS**

NASHVILLE OFFICE OF ARTS + CULTURE