

Mariposa Park Conceptual Master Plan

April 13, 2023



ESTABLISHED
1901



Agenda

Planning Process and Site Research

Public Input Results

The Conceptual Plan

Next Steps and Breakout Session

2022

2023

FALL

WINTER

SPRING

Project Kickoff

First Round of Community Engagement

Develop Concept Plans

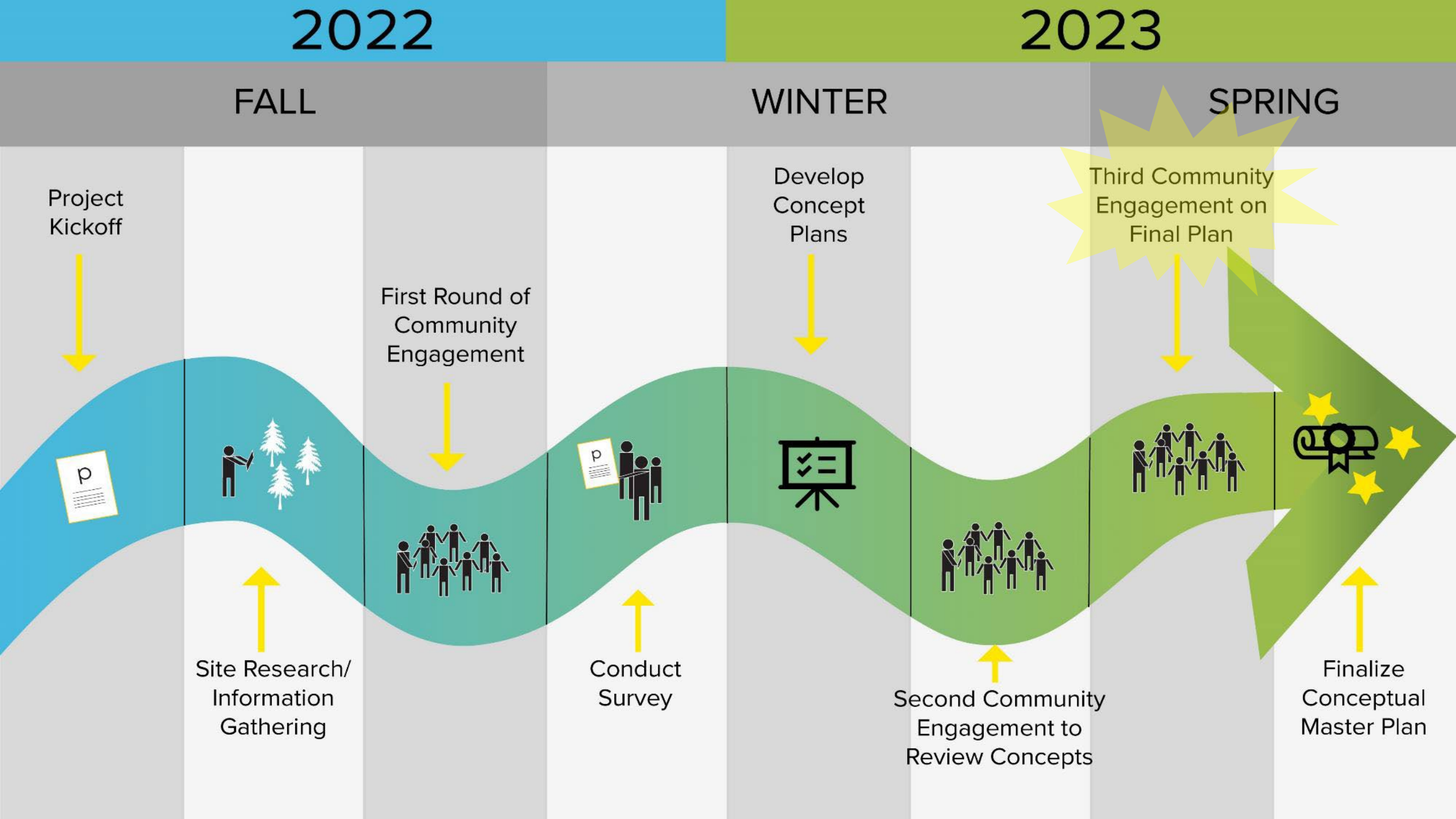
Third Community Engagement on Final Plan

Site Research/
Information
Gathering

Conduct
Survey

Second Community
Engagement to
Review Concepts

Finalize
Conceptual
Master Plan



Planning Process and Site Research



North

Not to scale

- Parks
- Greenways
- Arterial Roads
- NEIGHBORHOOD NAMES

Park Typologies

- Pocket Parks
- Greenway Corridors
- Neighborhood Parks
- Signature Parks
- Community Parks
- Specialty Parks
- Regional Parks

Neighborhood Park

(3-20 acres)

“Neighborhood parks are often the recreational and social focus of a community. Typically, active and passive uses include sport courts, playground, landscaping and seating, picnic shelters, a small field, or a community center. Existing examples of neighborhood parks include Bellevue Park and Richland Park.”

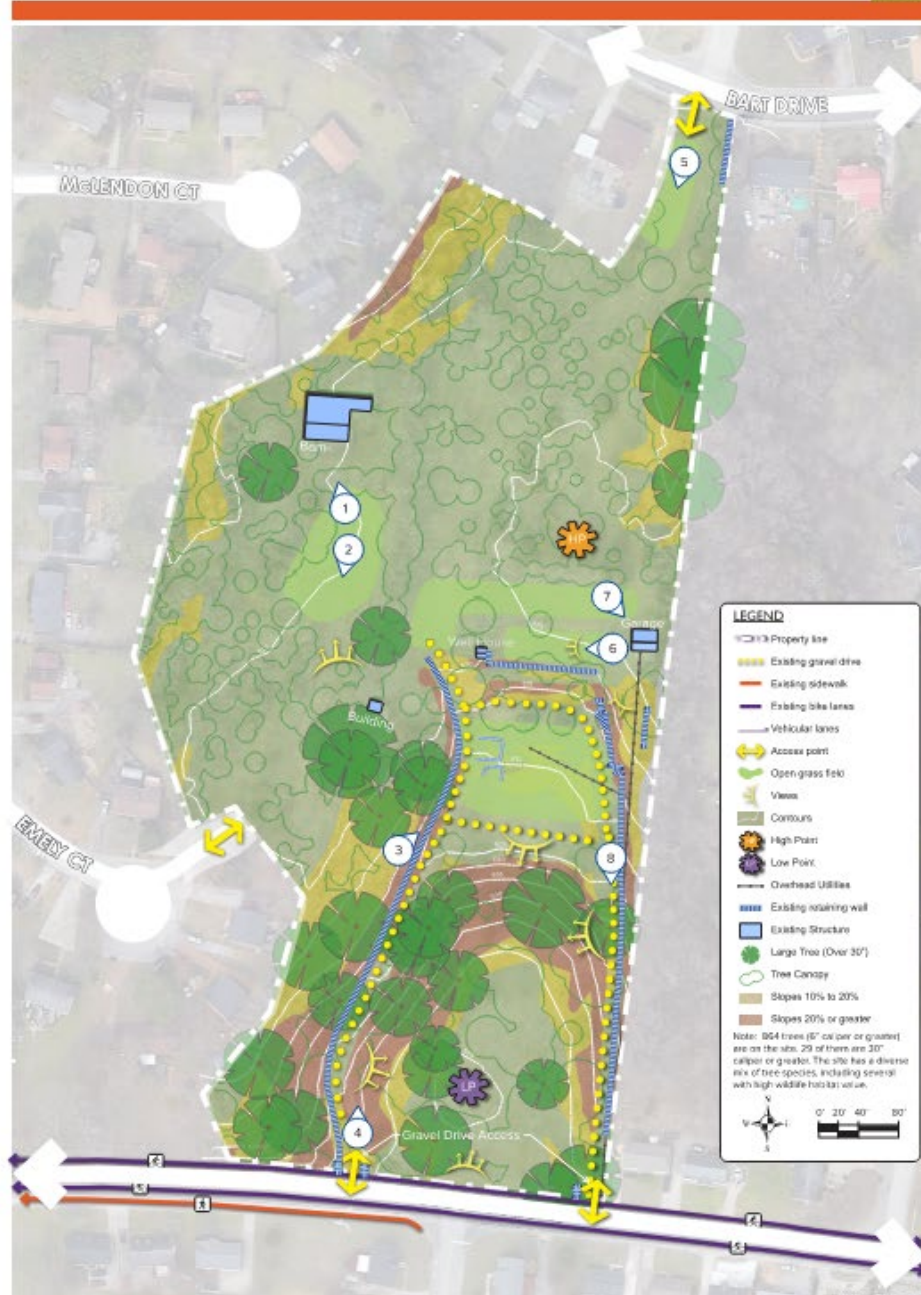
Fannie Mae Dees Park



Bellevue Park (Red Caboose Park)



Site Analysis



Site Conditions

Key Points:

- Lots of Trees: over 864 trees and a variety of species
- Steep slopes: over 50 feet of grade change across the site



Public Input Results

First Public Meeting



¡Ayúdanos a planificar un parque nuevo!

Reunión #1
Martes, 25 de Octubre de 2022
6:00 PM - 7:30 PM (no se requiere cita)
Escuela Primaria Cole
5060 Co errant Dr, Nashville, TN 37013

Tour del sitio y búsqueda del tesoro
Sábado, 5 de noviembre de 2022
10:00 AM - 1:00 PM (no se requiere cita)
Escuela Primaria Cole
(Estacione en la escuela para transporte al sitio)

Escuela Primaria Cole (Estacione Aquí)

METRO PARKS ANTIOCH

Para transportar Metro Parks, los padres y visitantes deben ir a la reunión escolar. El autobús en el estacionamiento de la escuela llevará a los visitantes al sitio del parque.

Welcome!
To the Tusculum Park Meeting!

- Please sign in at desk
- Visit each station to provide input and feedback.

This meeting will be followed by a Site Tour on
Saturday, November 5, 2022
10:00 am to 1:00 pm

Visitors for tour will be shuttled to park site after meet here at Cole Elementary School
5060 Colemont Dr, Antioch, TN 37013

- Held on 10.25.22 at Cole Elementary School
- Promoted through e-newsletters, social media and 60 postcards were mailed to residents near the site
- Flyer translated into Spanish and Arabic
- Translators on stand-by

First Public Meeting



Online Survey

- Administered by web
- Launched on 11.17.22 and closed 12.29.22
- Developed with input from Metro Parks
- Total of 96 surveys completed
- Promoted through direct email, social media, and Metro Parks' e-newsletter



Tuculum Road
Park is now....

Mariposa Park

And we need **YOUR INPUT!** Please
take the online survey today.



Combined Results from Engagement

Top Five Desired Features

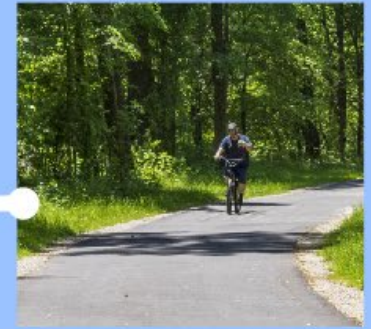
1

Natural hiking trails



2

Paved walking paths



3

Playground



4

Pavilion with picnic tables



5

Open lawn area/gathering space



Top 5 Amenities Needed County-wide



1 Playgrounds
65 Sites Needed



2 Paved Multi-use Trails
53 Miles Needed



3 Unpaved Trails/ Hiking Trails
50 Miles Needed



4 Basketball Courts
50 Courts Needed



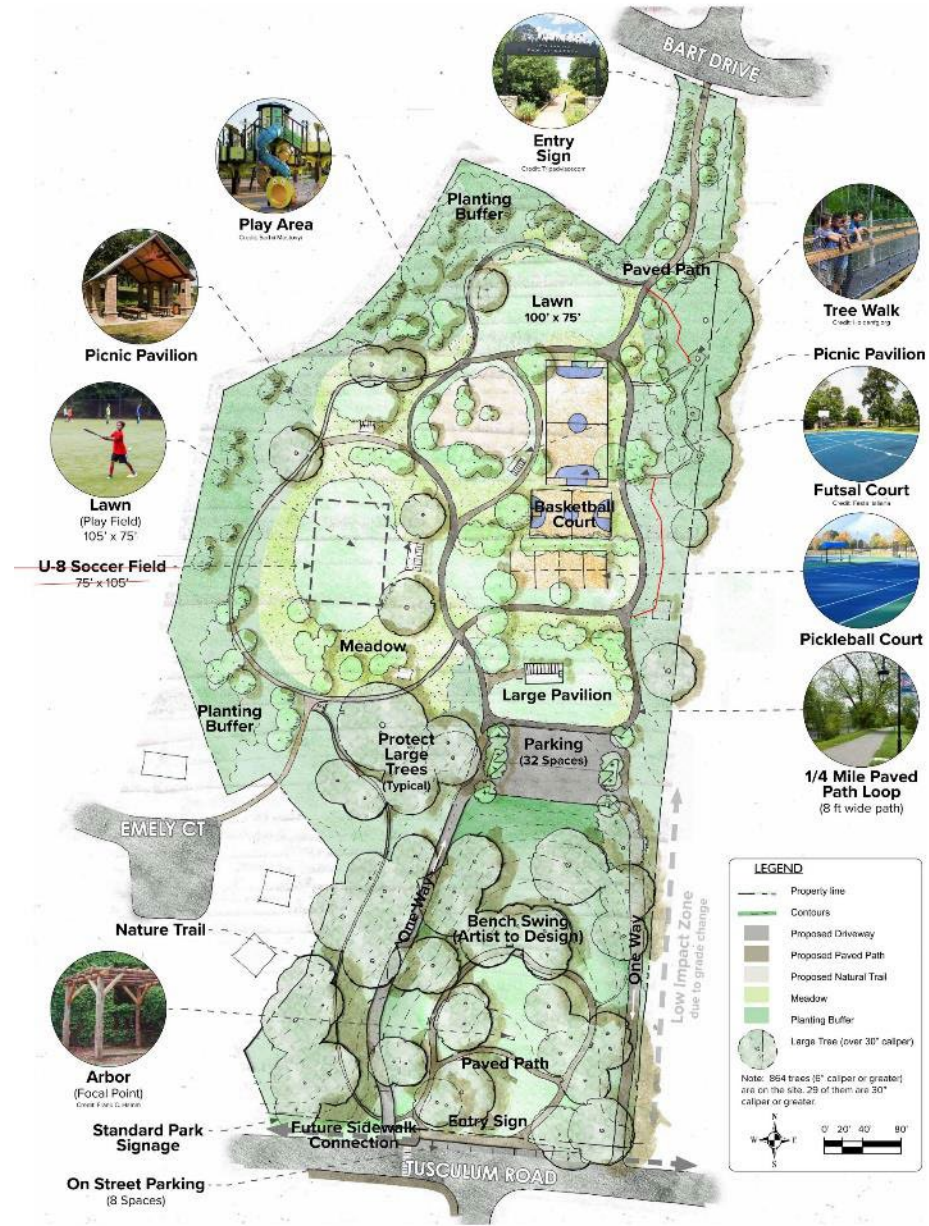
5 Multipurpose Fields
46 Fields Needed



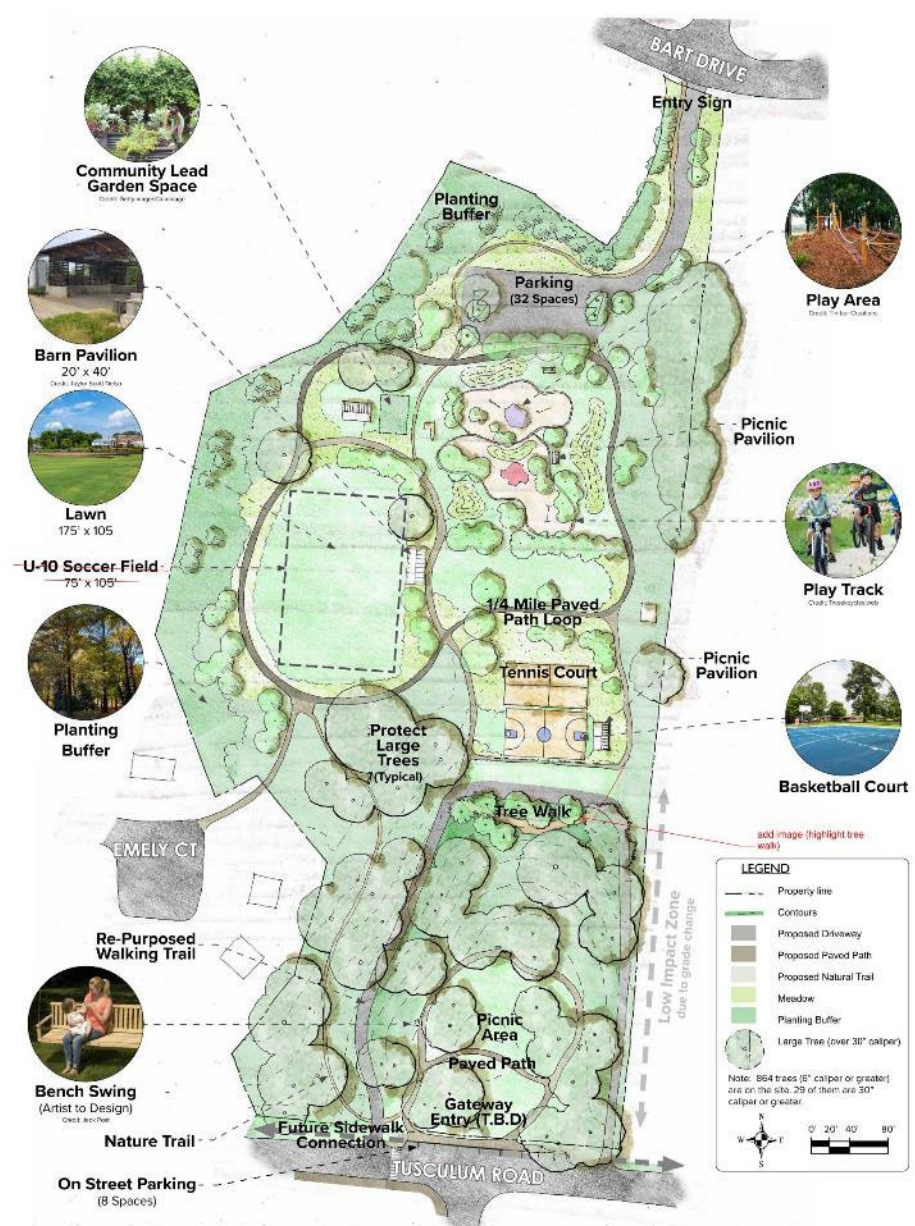
Preliminary

Concepts Plans

Conceptual Site Plan: Scheme A Mariposa Park



Conceptual Site Plan: Scheme B Mariposa Park



Second Public Meeting + Site Tour



Comments

- Walking and hiking trails!
- Strong support for the multipurpose field
- Connect name of Mariposa Park to art and the design
- Suggestions such as provide trail markers, places to sit, and provide soccer goals

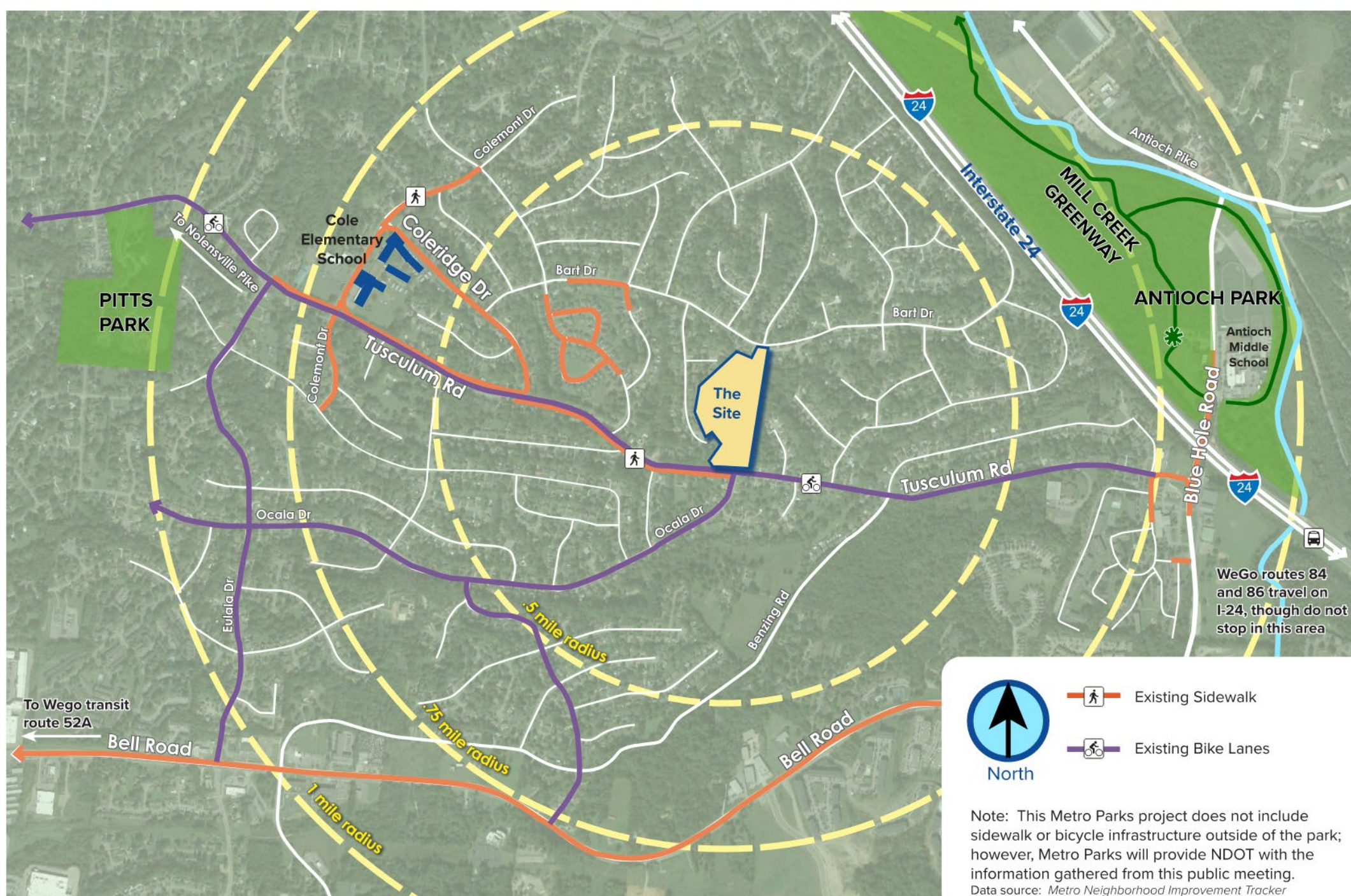
Thank You for providing more recreational spaces!

*Love the tree walk/
boardwalk!*

Would be nice to connect each surrounding section with sidewalks to get there!

Make sure it has a good playground, including swings

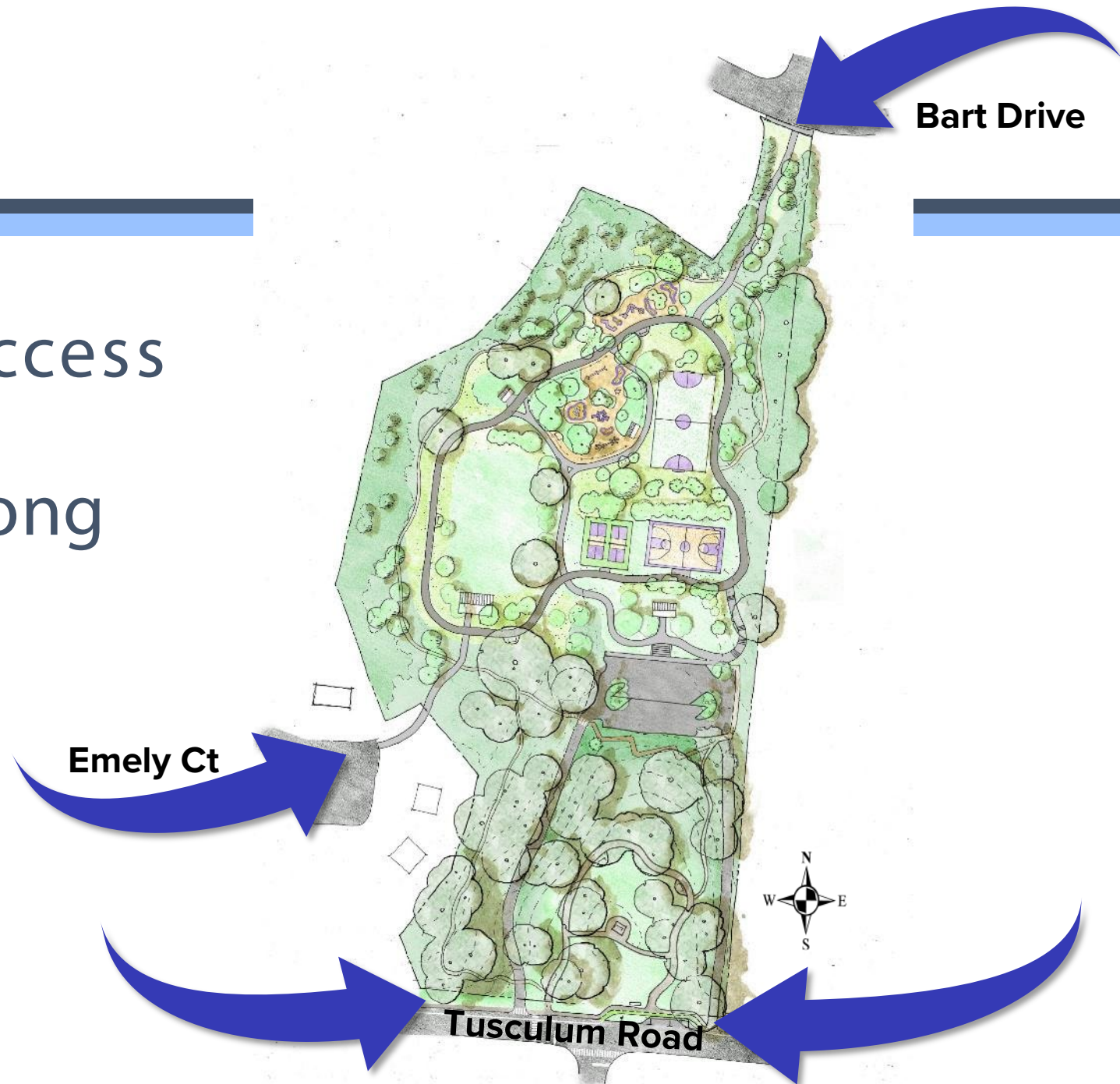
Access



Access

Walking/Biking Access

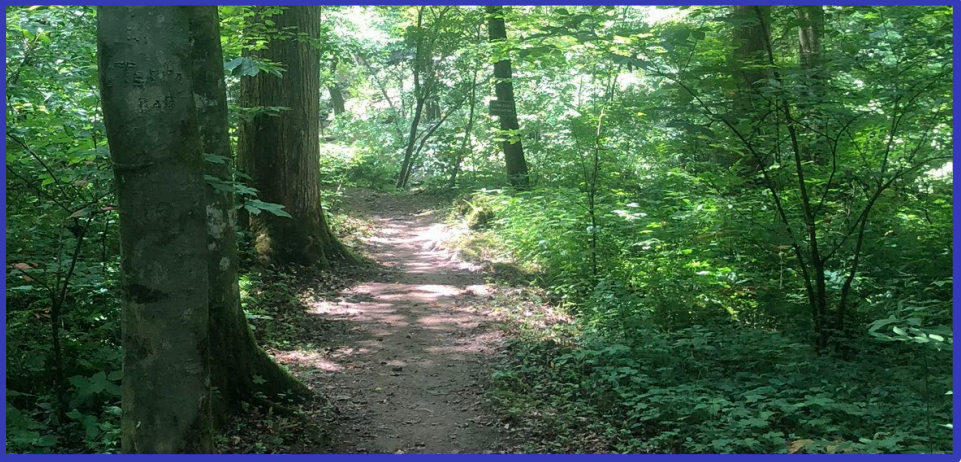
Driving access along
Tusculum Road



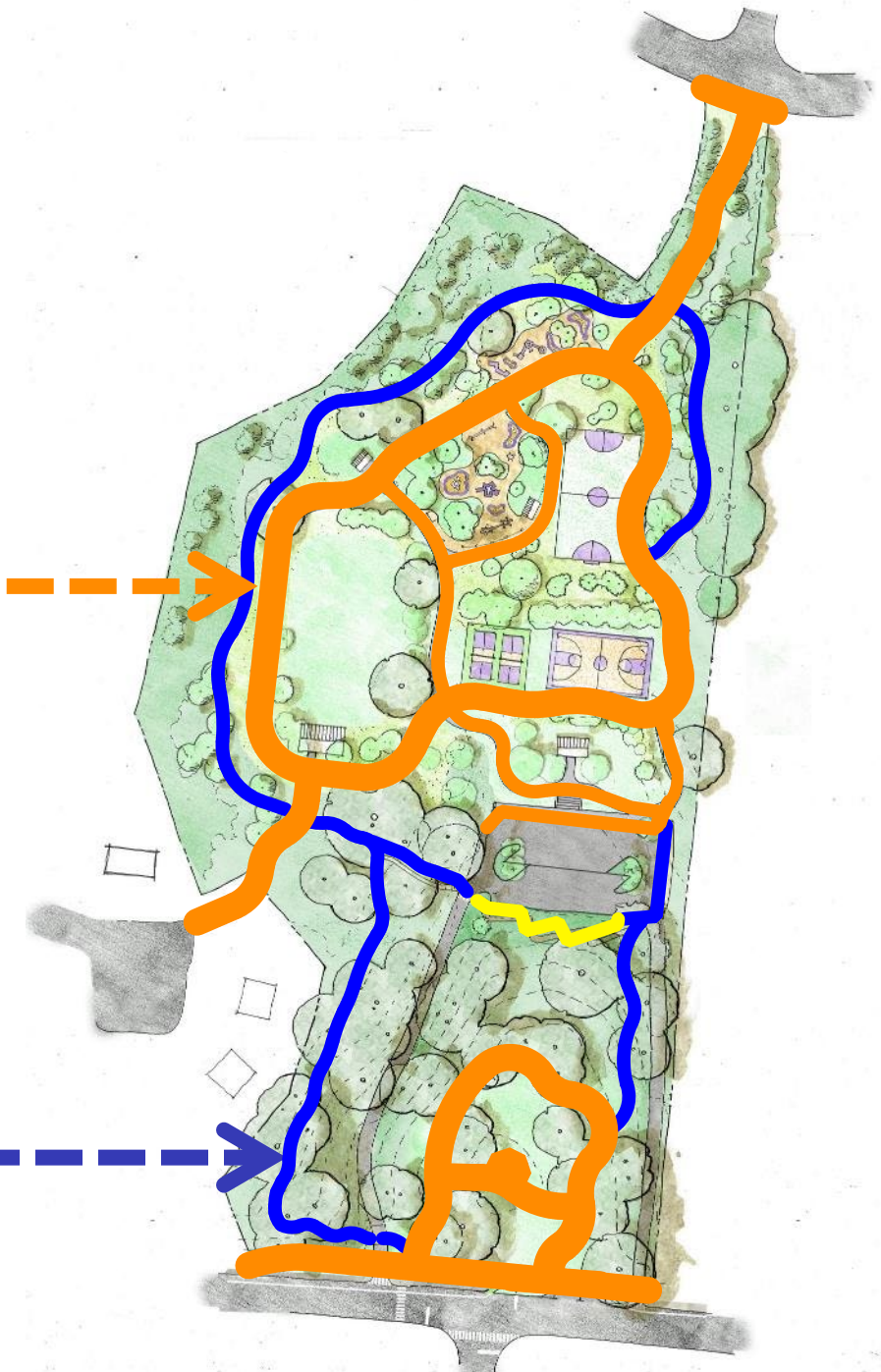
Circulation



Paved Pathway



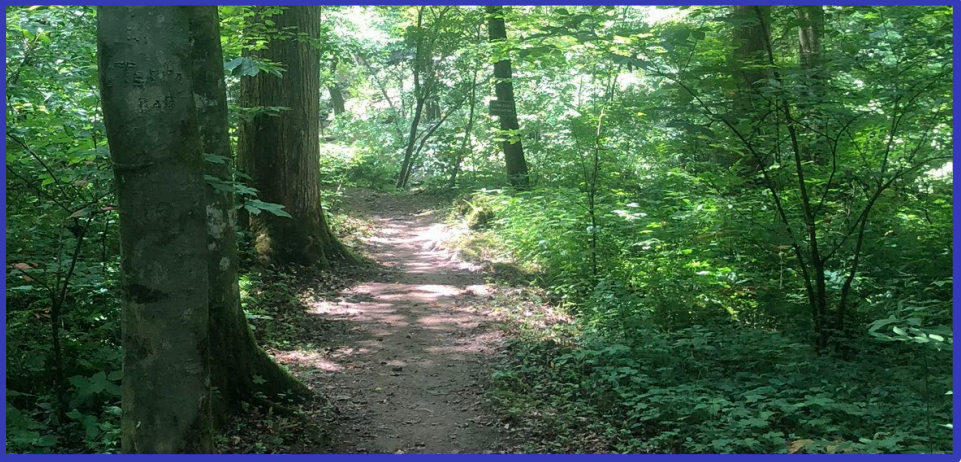
Unpaved Trails



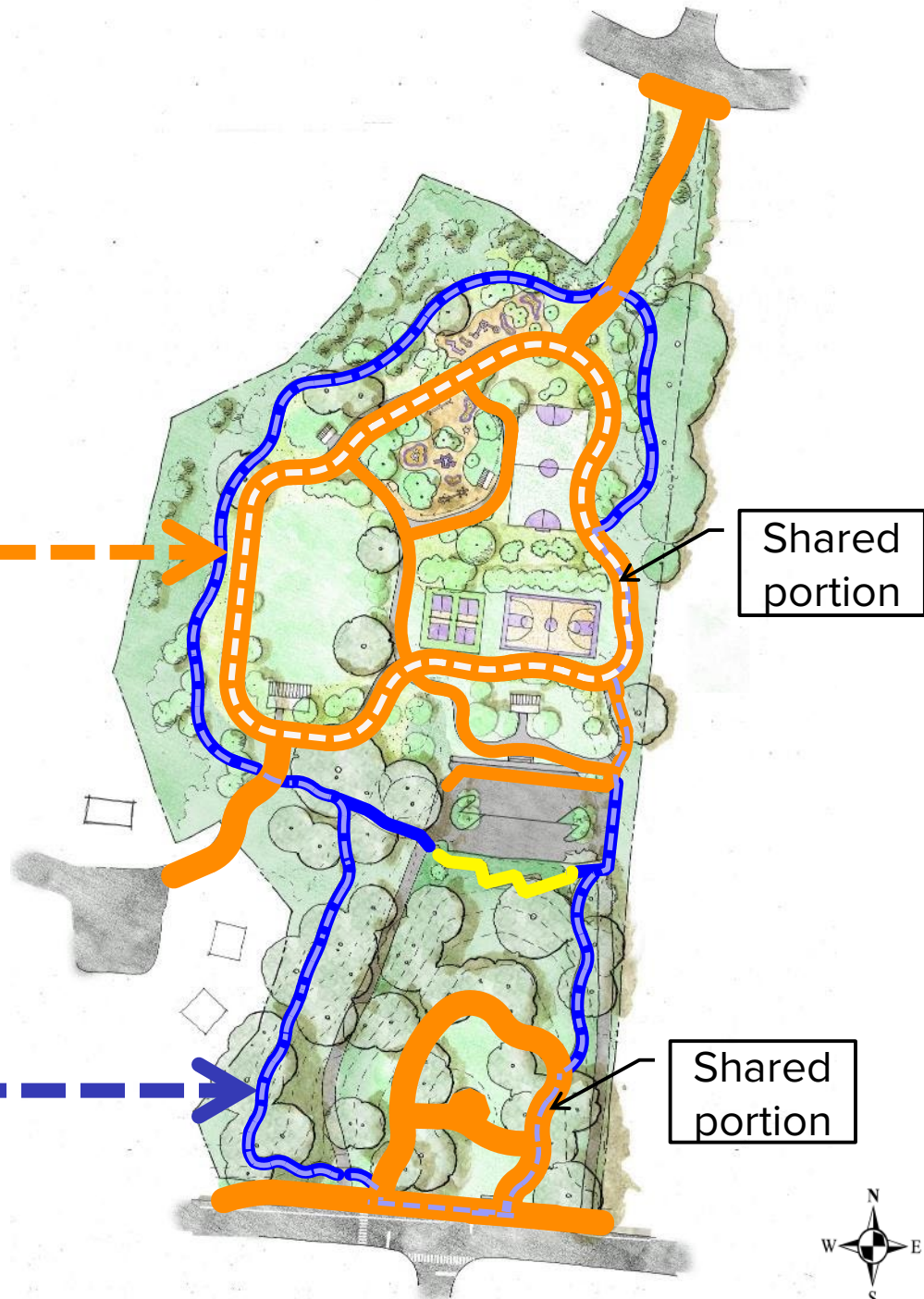
Loop Pathways and Trails



1/4 Mile Paved Loop



1/2 Mile Nature Loop





A Tusculum Road Entry



B Example of a Metro Parks Entry Sign



C Example of a Potential Arts Project



D Tree Board Walk



E Metro Parks Bench Swing



F Rustic Arbor



A Landscape Structures Double Swings
5-12 year-old Playground

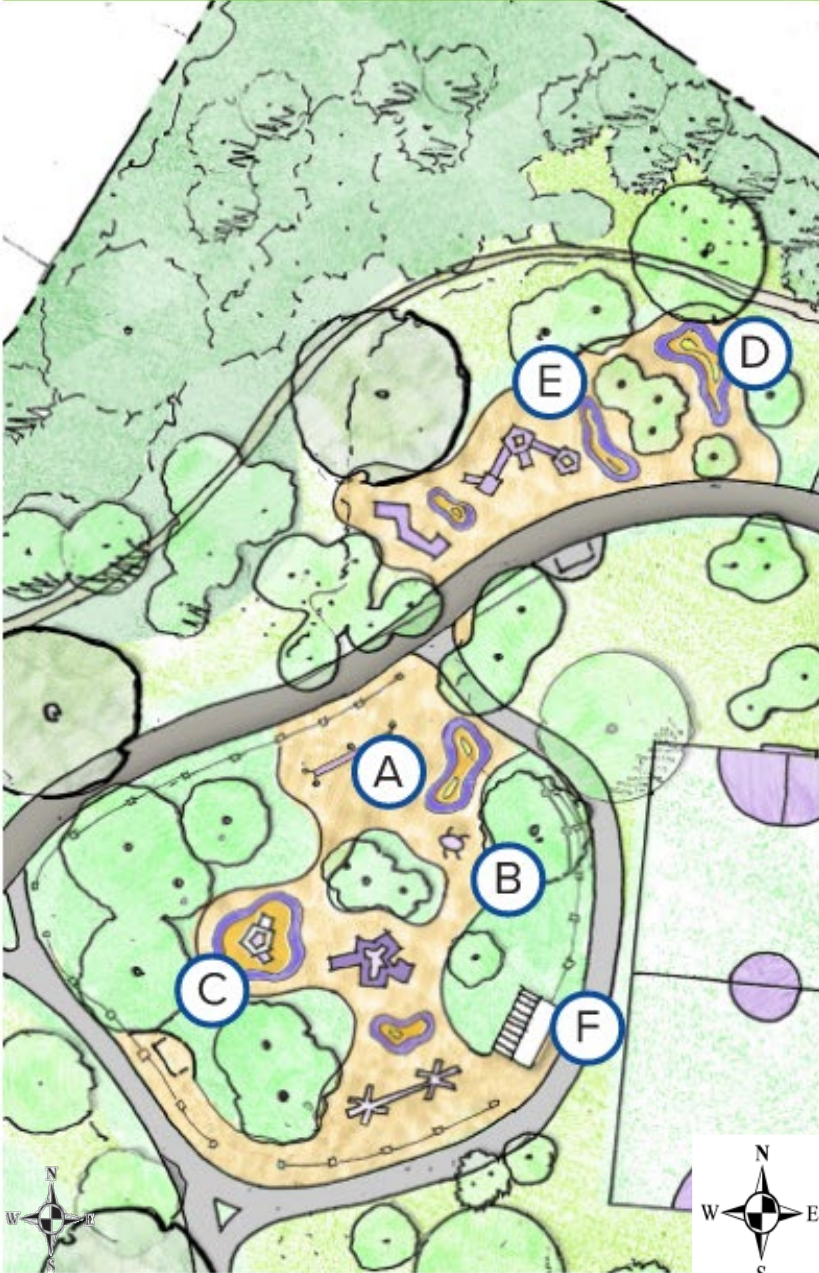


B EarthScape Ladybug Playable Sculpture
2-5 year-old Playground



C Landscape Structures Play Shaper
2-5 and 5-12 year old Playground

Playground Features



D Example of Potential Play Surface Design
By YIYU Design Studio



E Landscape Structures Harry Thomas Sr. Playscape
2-5 and 5-12 year old Playground



F Picnic Pavilion

Plan Highlights:

- Paved Trails
- Natural Trails
- Entry Signage
- Metro Arts Project (separate budget)
- Playground
- Pavilions
- Multipurpose Field and Courts
- Parking Lot with ADA spaces
- Lighting and Security Elements

TOTAL = \$6.2 to 7.4 million





Summary and Next Steps

Next Steps

- Gather input on this Final Conceptual Master Plan
- Update plan and post on the webpage
- Move forward with the design, including coordinating with Metro Arts

A photograph of a dense forest with tall, mature trees and vibrant green foliage. A solid blue horizontal banner is centered across the middle of the image, containing the text "Breakout Session" in white, bold, sans-serif font.

Breakout Session

The logo for BARGE DESIGN SOLUTIONS. The word "BARGE" is in a large, white, bold, sans-serif font with a yellow horizontal bar above the "E". Below it, the words "DESIGN SOLUTIONS" are in a smaller, yellow, sans-serif font.

BARGE
DESIGN SOLUTIONS