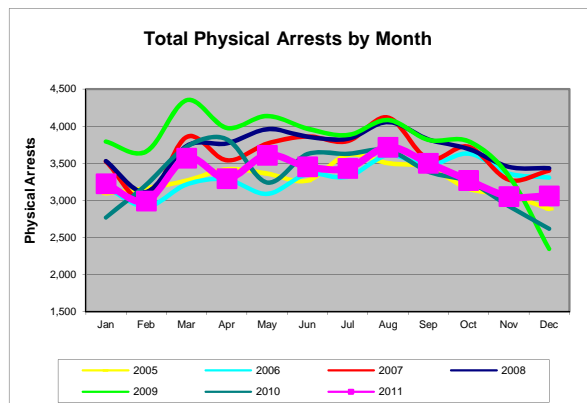
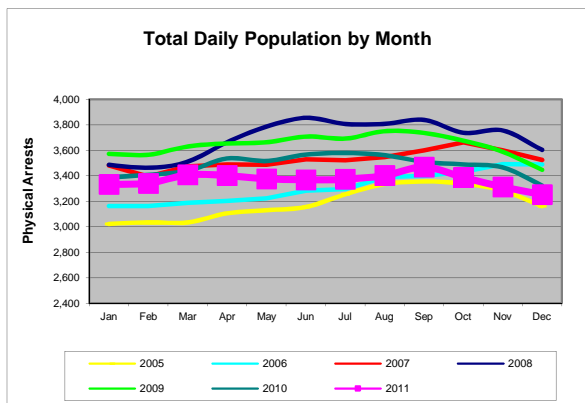


AVERAGE DAILY POPULATION REPORT Davidson County Correctional Facilities

Overview of December 2011	
1.	The ADP for December 2011 decreased 1.8% below November 2011 (from 3,314 to 3,254). The December 2011 ADP is 2.1% lower than December 2010.
2.	In December 2011 the ADP for Locally Sentenced Felons (LSF) decreased 1.0% below November 2011's ADP, and was lower than the ADP in December 2010 (2.3% decrease.)
3.	The ADP for the Department of Homeland Security / Immigration and Customs Enforcement (DHS/ICE) detainees increased 7.1% in December 2011 above November 2011 (From 14 to 15) . The ADP of 15 in December 2011 was lower than the ADP for December 2010, which was 18 (-16.7% change).
4.	Of the average 15 DHS/ICE inmates in the December 2011 ADP, 2 were ICE Detainers and 13 were DHS/ICE Custody Holds. On average, ICE Detainers stayed 1.2 days and DHS/ICE Custody Holds stayed 2.6 days upon release in December 2011. Overall, ICE inmates stayed 3.0 days which was 12% shorter (-0.4 day) than in November 2011.
5.	LSF inmates comprised 34.3% of the ADP, while Pretrial Felons (PTF) made up 30.5% of the total ADP for December 2011.
6.	The ADP for Pretrial Felons increased 0.9% in December 2011 above November 2011, but decreased 2.2% below December 2010.
7.	The ADP for Pretrial Misdemeanants declined 2.7% in December 2011 compared to November 2011, and also declined 12.0% below December 2010.
8.	In December 2011 the ADP for Convicted Misdemeanants & DUIs (CM+DUI) dropped 4.0% below November 2011 levels. Also, it declined 11.1% below December 2010.
9.	The average daily male population decreased to 2,839 (-2.1%) in December 2011, while the female daily population was 415, which was a 0.2% increase above November 2011.
10.	All of the Davidson County correctional facilities were below certified capacity during December 2011. CDCM operated at close to capacity at 93.9% on average during December 2011.
11.	On average, the DCSO facilities (excluding MDF) operated at 71.3% of certified capacity in December 2011.
12.	There were 3,062 physical arrests made in December 2011. This was 0.3% more than in November 2011, and was 17% more than in December 2010.



Disclaimer: All reports and other documents generated by Criminal Justice Planning are based on information drawn from databases owned and maintained by other agencies of state and local government. Therefore, Criminal Justice Planning can not guarantee, or assume responsibility for, the accuracy or completeness of the data or information reflected in any reports or other documents.

Average Daily Population Summary by Classification

Month 2011	Total ADP			Total ADP by Gender					
	Total	Monthly Change	Change Since Jan	Male	Monthly Change	Change Since Jan	Female	Monthly Change	Change Since Jan
Jan	3,334	0.3%		2,937	0.4%		397	0.0%	
Feb	3,342	0.2%	0.2%	2,935	-0.1%	-0.1%	407	2.5%	2.5%
Mar	3,408	2.0%	2.2%	2,962	0.9%	0.9%	446	9.6%	12.3%
Apr	3,403	-0.1%	2.1%	2,948	-0.5%	0.4%	455	2.0%	14.6%
May	3,377	-0.8%	1.3%	2,934	-0.5%	-0.1%	443	-2.6%	11.6%
Jun	3,369	-0.2%	1.0%	2,928	-0.2%	-0.3%	441	-0.5%	11.1%
Jul	3,374	0.1%	1.2%	2,938	0.3%	0.0%	436	-1.1%	9.8%
Aug	3,403	0.9%	2.1%	2,966	1.0%	1.0%	437	0.2%	10.1%
Sep	3,470	2.0%	4.1%	3,016	1.7%	2.7%	454	3.9%	14.4%
Oct	3,388	-2.4%	1.6%	2,956	-2.0%	0.6%	432	-4.8%	8.8%
Nov	3,314	-2.2%	-0.6%	2,900	-1.9%	-1.3%	414	-4.2%	4.3%
Dec	3,254	-1.8%	-2.4%	2,839	-2.1%	-3.3%	415	0.2%	4.5%
AVG	3,370	-0.2%		2,938	-0.2%		431	0.4%	

Month 2011	PTF	Monthly Change	Change Since Jan	PTM	Monthly Change	Change Since Jan	CM+DUI	Monthly Change	Change Since Jan
Jan	1,034	2.1%		150	20.0%		599	-3.5%	
Feb	1,007	-2.6%	-2.6%	137	-8.7%	-8.7%	609	1.7%	1.7%
Mar	1,029	2.2%	-0.5%	127	-7.3%	-15.3%	647	6.2%	8.0%
Apr	1,014	-1.5%	-1.9%	123	-3.1%	-18.0%	667	3.1%	11.4%
May	1,017	0.3%	-1.6%	123	0.0%	-18.0%	625	-6.3%	4.3%
Jun	1,037	2.0%	0.3%	116	-5.7%	-22.7%	627	0.3%	4.7%
Jul	1,041	0.4%	0.7%	131	12.9%	-12.7%	639	1.9%	6.7%
Aug	1,052	1.1%	1.7%	132	0.8%	-12.0%	609	-4.7%	1.7%
Sep	1,059	0.7%	2.4%	132	0.0%	-12.0%	599	-1.6%	0.0%
Oct	1,030	-2.7%	-0.4%	120	-9.1%	-20.0%	583	-2.7%	-2.7%
Nov	982	-4.7%	-5.0%	113	-5.8%	-24.7%	575	-1.4%	-4.0%
Dec	991	0.9%	-4.2%	110	-2.7%	-26.7%	552	-4.0%	-7.8%
AVG	1,024	-0.2%		126	-0.7%		611	-0.9%	

ADP	Average Daily Population
PTF	Pretrial Felons
PTM	Pretrial Misdemeanants
CM+DUI	Convicted Misdemeanants including DUI's

Notes:

*Classification and gender subtotals may not sum to the monthly total due to rounding.

Source: "Average Daily Population of Detention Facilities", Davidson County Sheriff's Office.

Average Daily Population Summary by Classification

Month 2011	LSF	Monthly Change	Change Since Jan	PVF	Monthly Change	Change Since Jan
Jan	1,089	-4.7%		186	31.9%	
Feb	1,095	0.6%	0.6%	201	8.1%	8.1%
Mar	1,092	-0.3%	0.3%	228	13.4%	22.6%
Apr	1,084	-0.7%	-0.5%	214	-6.1%	15.1%
May	1,076	-0.7%	-1.2%	218	1.9%	17.2%
Jun	1,065	-1.0%	-2.2%	240	10.1%	29.0%
Jul	1,040	-2.3%	-4.5%	246	2.5%	32.3%
Aug	1,077	3.6%	-1.1%	261	6.1%	40.3%
Sep	1,118	3.8%	2.7%	259	-0.8%	39.2%
Oct	1,141	2.1%	4.8%	220	-15.1%	18.3%
Nov	1,128	-1.1%	3.6%	230	4.5%	23.7%
Dec	1,117	-1.0%	2.6%	205	-10.9%	10.2%
AVG	1,094	-0.2%		226	3.8%	

Month 2011	PVM	Monthly Change	Change Since Jan	OTHER (a)	Monthly Change	Change Since Jan	DHS/ICE** (b)	Monthly Change	Change Since Jan
Jan	31	34.8%		226	-5.4%		19	5.6%	
Feb	30	-3.2%	-3.2%	242	7.1%	7.1%	21	10.5%	10.5%
Mar	26	-13.3%	-16.1%	240	-0.8%	6.2%	19	-9.5%	0.0%
Apr	30	15.4%	-3.2%	249	3.8%	10.2%	22	15.8%	15.8%
May	27	-10.0%	-12.9%	269	8.0%	19.0%	22	0.0%	15.8%
Jun	23	-14.8%	-25.8%	244	-9.3%	8.0%	17	-22.7%	-10.5%
Jul	24	4.3%	-22.6%	231	-5.3%	2.2%	22	29.4%	15.8%
Aug	28	16.7%	-9.7%	226	-2.2%	0.0%	18	-18.2%	-5.3%
Sep	28	0.0%	-9.7%	257	13.7%	13.7%	19	5.6%	0.0%
Oct	28	0.0%	-9.7%	250	-2.7%	10.6%	18	-5.3%	-5.3%
Nov	32	14.3%	3.2%	240	-4.0%	6.2%	14	-22.2%	-26.3%
Dec	21	-34.4%	-32.3%	243	1.3%	7.5%	15	7.1%	-21.1%
AVG	27	0.8%		243	0.3%		19	-0.3%	

****A MORE DETAILED BREAKDOWN OF DHS/ICE INMATES IS ON PAGE 9 OF THIS REPORT.**

LSF	Locally Sentenced Felons
PVF	Probation Violators, Felony
PVM	Probation Violators, Misdemeanor
OTHER	All other classifications
DHS/ICE	Detained for U.S. Department of Homeland Security/Immigration and Customs Enforcement

Notes:

*Classification and gender subtotals may not sum to the monthly total due to rounding.

(a) Other classifications include the following charge classes: CIVCON, SPARVIO, STATESPL, STATE, FED (with no active immigration charge), GOVERNOR, NONE, NULL (with no active charges, ICE Detainer or Custody Holds).

(b) The Sheriff's office began screening for legal immigration status in mid-April 2007. The number in the table represents: (1) inmates who have no active local charges and are being held on a 48-hour ICE Detainer, (2) inmates who have no active local charges and are being held on a DHS/ICE Custody Hold, and (3) inmates who have only an active immigration charge.

Source: "Average Daily Population of Detention Facilities", Davidson County Sheriff's Office.

**Percent of Population by Classification
Including LSF Inmates**

THESE TABLES INCLUDE LOCALLY SENTENCED FELONS

Month 2011	ADP	PTF	PTM	CM/DUI	LSF	PVF	PVM	OTHER (a)	DHS/ICE (b)
Jan	3,334	31.0%	4.5%	18.0%	32.7%	5.6%	0.9%	6.8%	0.6%
Feb	3,342	30.1%	4.1%	18.2%	32.8%	6.0%	0.9%	7.2%	0.6%
Mar	3,408	30.2%	3.7%	19.0%	32.0%	6.7%	0.8%	7.0%	0.6%
Apr	3,403	29.8%	3.6%	19.6%	31.9%	6.3%	0.9%	7.3%	0.6%
May	3,377	30.1%	3.6%	18.5%	31.9%	6.5%	0.8%	8.0%	0.7%
Jun	3,369	30.8%	3.4%	18.6%	31.6%	7.1%	0.7%	7.2%	0.5%
Jul	3,374	30.9%	3.9%	18.9%	30.8%	7.3%	0.7%	6.8%	0.7%
Aug	3,403	30.9%	3.9%	17.9%	31.6%	7.7%	0.8%	6.6%	0.5%
Sep	3,470	30.5%	3.8%	17.3%	32.2%	7.5%	0.8%	7.4%	0.5%
Oct	3,388	30.4%	3.5%	17.2%	33.7%	6.5%	0.8%	7.4%	0.5%
Nov	3,314	29.6%	3.4%	17.4%	34.0%	6.9%	1.0%	7.2%	0.4%
Dec	3,254	30.5%	3.4%	17.0%	34.3%	6.3%	0.6%	7.5%	0.5%
AVG	3,370	30.4%	3.7%	18.1%	32.5%	6.7%	0.8%	7.2%	0.6%

Month 2011	ADP	Percent Change	
		Monthly	Since Jan
Jan	3,334	0.0%	
Feb	3,342	0.2%	0.2%
Mar	3,408	2.0%	2.2%
Apr	3,403	-0.1%	2.1%
May	3,377	-0.8%	1.3%
Jun	3,369	-0.2%	1.0%
Jul	3,374	0.1%	1.2%
Aug	3,403	0.9%	2.1%
Sep	3,470	2.0%	4.1%
Oct	3,388	-2.4%	1.6%
Nov	3,314	-2.2%	-0.6%
Dec	3,254	-1.8%	-2.4%

Notes:

(a) Other classifications include the following charge classes: CIVCON, SPARVIO, STATESPL, STATE, FED (with no active immigration charge), GOVERNOR, NONE, NULL (with no active charges, ICE Detainer or Custody Holds).

(b) The Sheriff's office began screening for legal immigration status in mid-April 2007. The number in the table represents: (1) inmates who have no active local charges and are being held on a 48-hour ICE Detainer, (2) inmates who have no active local charges and are being held on a DHS/ICE Custody Hold, and (3) inmates who have only an active immigration charge.

Source: "Average Daily Population of Detention Facilities", Davidson County Sheriff's Office.

Percent of Population by Classification
Excluding LSF Inmates

THESE TABLES EXCLUDE LOCALLY SENTENCED FELONS

Month 2011	ADP	PTF	PTM	CM/DUI	PVF	PVM	OTHER (a)	DHS/ICE (b)
Jan	2,245	46.1%	6.7%	26.7%	8.3%	1.4%	10.1%	0.8%
Feb	2,247	44.8%	6.1%	27.1%	8.9%	1.3%	10.8%	0.9%
Mar	2,316	44.4%	5.5%	27.9%	9.8%	1.1%	10.4%	0.8%
Apr	2,319	43.7%	5.3%	28.8%	9.2%	1.3%	10.7%	0.9%
May	2,301	44.2%	5.3%	27.2%	9.5%	1.2%	11.7%	1.0%
Jun	2,304	45.0%	5.0%	27.2%	10.4%	1.0%	10.6%	0.7%
Jul	2,334	44.6%	5.6%	27.4%	10.5%	1.0%	9.9%	0.9%
Aug	2,326	45.2%	5.7%	26.2%	11.2%	1.2%	9.7%	0.8%
Sep	2,352	45.0%	5.6%	25.5%	11.0%	1.2%	10.9%	0.8%
Oct	2,247	45.8%	5.3%	25.9%	9.8%	1.2%	11.1%	0.8%
Nov	2,186	44.9%	5.2%	26.3%	10.5%	1.5%	11.0%	0.6%
Dec	2,137	46.4%	5.1%	25.8%	9.6%	1.0%	11.4%	0.7%
AVG	2,276	45.0%	5.5%	26.8%	9.9%	1.2%	10.7%	0.8%

Month 2011	ADP	Percent Change	
		Monthly	Since Jan
Jan	2,245	3.7%	
Feb	2,247	0.1%	0.1%
Mar	2,316	3.1%	3.2%
Apr	2,319	0.1%	3.3%
May	2,301	-0.8%	2.5%
Jun	2,304	0.1%	2.6%
Jul	2,334	1.3%	4.0%
Aug	2,326	-0.3%	3.6%
Sep	2,352	1.1%	4.8%
Oct	2,247	-4.5%	0.1%
Nov	2,186	-2.7%	-2.6%
Dec	2,137	-2.2%	-4.8%

Notes:

(a) Other classifications include the following charge classes: CIVCON, SPARVIO, STATESPL, STATE, FED (with no active immigration charge), GOVERNOR, NONE, NULL (with no active charges, ICE Detainer or Custody Holds).

(b) The Sheriff's office began screening for legal immigration status in mid-April 2007. The number in the table represents: (1) inmates who have no active local charges and are being held on a 48-hour ICE Detainer, (2) inmates who have no active local charges and are being held on a DHS/ICE Custody Hold, and (3) inmates who have only an active immigration charge.

Source: "Average Daily Population of Detention Facilities", Davidson County Sheriff's Office.

Percent Change in the Average Daily Population from Previous Year to Current Year

Month	ADP			PTF			PTM		
	2010	2011	% Change	2010	2011	% Change	2010	2011	% Change
Jan	3,385	3,334	-1.5%	991	1,034	4.3%	125	150	20.0%
Feb	3,408	3,342	-1.9%	1,001	1,007	0.6%	129	137	6.2%
Mar	3,438	3,408	-0.9%	996	1,029	3.3%	125	127	1.6%
Apr	3,536	3,403	-3.8%	1,039	1,014	-2.4%	143	123	-14.0%
May	3,516	3,377	-4.0%	1,029	1,017	-1.2%	140	123	-12.1%
Jun	3,567	3,369	-5.6%	1,068	1,037	-2.9%	157	116	-26.1%
Jul	3,579	3,374	-5.7%	1,083	1,041	-3.9%	145	131	-9.7%
Aug	3,562	3,403	-4.5%	1,085	1,052	-3.0%	156	132	-15.4%
Sep	3,509	3,470	-1.1%	1,040	1,059	1.8%	154	132	-14.3%
Oct	3,489	3,388	-2.9%	1,055	1,030	-2.4%	141	120	-14.9%
Nov	3,466	3,314	-4.4%	1,050	982	-6.5%	135	113	-16.3%
Dec	3,323	3,254	-2.1%	1,013	991	-2.2%	125	110	-12.0%
Avg	3,482	3,370	-3.2%	1,038	1,024	-1.2%	140	126	-8.9%

Month	CM+DUI			LSF			PVF		
	2010	2011	% Change	2010	2011	% Change	2010	2011	% Change
Jan	691	599	-13.3%	1,091	1,089	-0.2%	204	186	-8.8%
Feb	692	609	-12.0%	1,095	1,095	0.0%	200	201	0.5%
Mar	721	647	-10.3%	1,089	1,092	0.3%	222	228	2.7%
Apr	728	667	-8.4%	1,093	1,084	-0.8%	243	214	-11.9%
May	723	625	-13.6%	1,109	1,076	-3.0%	204	218	6.9%
Jun	743	627	-15.6%	1,051	1,065	1.3%	273	240	-12.1%
Jul	742	639	-13.9%	1,035	1,040	0.5%	317	246	-22.4%
Aug	718	609	-15.2%	1,067	1,077	0.9%	282	261	-7.4%
Sep	702	599	-14.7%	1,107	1,118	1.0%	250	259	3.6%
Oct	683	583	-14.6%	1,118	1,141	2.1%	221	220	-0.5%
Nov	675	575	-14.8%	1,155	1,128	-2.3%	158	230	45.6%
Dec	621	552	-11.1%	1,143	1,117	-2.3%	141	205	45.4%
Avg	703	611	-13.1%	1,096	1,094	-0.2%	226	226	3.5%

Month	PVM			Other (a)			DHS/ICE (b)		
	2010	2011	% Change	2010	2011	% Change	2010	2011	% Change
Jan	29	31	6.9%	238	226	-5.0%	16	19	18.8%
Feb	34	30	-11.8%	237	242	2.1%	20	21	5.0%
Mar	40	26	-35.0%	232	240	3.4%	13	19	46.2%
Apr	34	30	-11.8%	235	249	6.0%	21	22	4.8%
May	41	27	-34.1%	246	269	9.3%	24	22	-8.3%
Jun	36	23	-36.1%	216	244	13.0%	23	17	-26.1%
Jul	32	24	-25.0%	208	231	11.1%	17.3	22	27.2%
Aug	30	28	-6.7%	206	226	9.7%	18	18	0.0%
Sep	23	28	21.7%	214	257	20.1%	20	19	-5.0%
Oct	29	28	-3.4%	224	250	11.6%	18	18	0.0%
Nov	25	32	28.0%	244	240	-1.6%	24	14	-41.7%
Dec	23	21	-8.7%	239	243	1.7%	18	15	-16.7%
Avg	31	27	-9.7%	228	243	6.8%	19	19	0.3%

ADP	Average Daily Population
PTF	Pretrial Felons
PTM	Pretrial Misdemeanants
CM+DUI	Convicted Misdemeanants including DUI's
LSF	Locally Sentenced Felons
PVF	Probation Violators, Felony
PVM	Probation Violators, Misdemeanor
OTHER	All other classifications
DHS/ICE	Detained for U.S. Department of Homeland Security/Immigration and Customs Enforcement

Notes:

- (a) Other classifications include the following charge classes: CIVCON, SPARVIO, STATESPL, STATE, FED (with no active immigration charge), GOVERNOR, NONE, NULL (with no active charges, ICE Detainer or Custody Holds).
- (b) The Sheriff's office began screening for legal immigration status in mid-April 2007. The number in the table represents: (1) inmates who have no active local charges and are being held on a 48-hour ICE Detainer, (2) inmates who have no active local charges and are being held on a DHS/ICE Custody Hold, and (3) inmates who have only an active immigration charge.

Source: "Average Daily Population of Detention Facilities", Davidson County Sheriff's Office.

Average Daily Population Summary by Facility

2011 Month	CJC				
	Capacity - 807 (a)			Temp Housing	
	ADP (Includes the Gym and Excludes Processing*)	Percent Change from Previous Month	Average Percent Capacity	ADP	Percent Change from Previous Month
Jan	716		88.7%	0	0.0%
Feb	721	0.7%	89.3%	0	NC
Mar	735	1.9%	91.1%	0	NC
Apr	731	-0.5%	90.6%	0	NC
May	738	1.0%	91.4%	0	NC
Jun	732	-0.8%	90.7%	0	NC
Jul	694	-5.2%	86.0%	0	NC
Aug	671	-3.3%	83.1%	0	NC
Sep	679	1.2%	84.1%	0	NC
Oct	658	-3.1%	81.5%	0	NC
Nov	613	-6.8%	76.0%	0	NC
Dec	687	12.1%	85.1%	0	NC
YTD AVG	698	-0.3%	86.5%	0	0.0%

*Processing includes all inmates in custody who have not been assigned a bed.

CDCM			CDCF (b)		
Capacity - 768 (f)			Capacity - 508		
ADP	Percent Change from Previous Month	Average Percent Capacity	ADP	Percent Change from Previous Month	Average Percent Capacity
709		92.3%	398		78.3%
793	11.8%	103.3%	407	2.3%	80.1%
806	1.6%	104.9%	445	9.3%	87.6%
807	0.1%	105.1%	455	2.2%	89.6%
790	-2.1%	102.9%	443	-2.6%	87.2%
800	1.3%	104.2%	441	-0.5%	86.8%
778	-2.8%	101.3%	411	-6.8%	80.9%
762	-2.1%	99.2%	340	-17.3%	66.9%
755	-0.9%	98.3%	349	2.6%	68.7%
731	-3.2%	95.2%	327	-6.3%	64.4%
750	2.6%	97.7%	317	-3.1%	62.4%
721	-3.9%	93.9%	314	-0.9%	61.8%
767	0.2%	99.8%	387	-1.9%	76.2%

2011 Month	HDC (e)			ORC			MDF				
	Capacity - 535			Capacity - 300			Capacity - 1,348 (c)				
	ADP	Percent Change from Previous Month	Average Percent Capacity	ADP	Percent Change from Previous Month	Average Percent Capacity	Male ADP	Female ADP	Total ADP	Percent Change from Previous Month	Average Percent Capacity
Jan	349		65.2%	94		31.3%	1,068	0	1,068		97.8%
Feb	349	0.0%	65.2%	0	-100.0%	0.0%	1,072	0	1,072	0.4%	98.2%
Mar	354	1.4%	66.2%	0	0.0%	0.0%	1,068	0	1,068	-0.4%	97.8%
Apr	349	-1.4%	65.2%	0	0.0%	0.0%	1,061	0	1,061	-0.7%	97.2%
May	350	0.3%	65.4%	0	0.0%	0.0%	1,056	0	1,056	-0.5%	96.7%
Jun	353	0.9%	66.0%	0	0.0%	0.0%	1,044	0	1,044	-1.1%	95.6%
Jul	441	24.9%	82.4%	0	0.0%	0.0%	1,025	25	1,050	0.6%	77.9%
Aug	488	10.7%	91.2%	0	0.0%	0.0%	1,045	97	1,142	8.8%	84.7%
Sep	492	0.8%	92.0%	0	0.0%	0.0%	1,090	105	1,195	4.6%	88.6%
Oct	467	-5.1%	87.3%	0	0.0%	0.0%	1,101	104	1,205	0.8%	89.4%
Nov	450	-3.6%	84.1%	0	0.0%	0.0%	1,088	97	1,185	-1.7%	87.9%
Dec	358	-20.4%	66.9%	0	0.0%	0.0%	1,073	101	1,174	-0.9%	87.1%
YTD AVG	400	0.8%	74.8%	8	-9.1%	2.6%	1,066	44	1,110	0.9%	91.6%

2011 Month	Total Facilities		
	Capacity - 4,266 (d)		
ADP	Percent Change from Previous Month	Average Percent Capacity	
Jan	3,334		83.1%
Feb	3,342	0.2%	83.3%
Mar	3,408	2.0%	85.0%
Apr	3,403	-0.1%	84.9%
May	3,377	-0.8%	84.2%
Jun	3,370	-0.2%	84.0%
Jul	3,374	0.1%	84.1%
Aug	3,403	0.9%	84.9%
Sep	3,470	2.0%	86.5%
Oct	3,388	-2.4%	84.5%
Nov	3,315	-2.2%	82.7%
Dec	3,254	-1.8%	81.1%
YTD AVG	3,370	-0.2%	84.0%

2011 Month	Total DCSO Facilities		
	Capacity - 2,918		
ADP	Percent Change from Previous Month	Average Percent Capacity	
Jan	2,266		77.7%
Feb	2,270	0.2%	77.8%
Mar	2,340	3.1%	80.2%
Apr	2,342	0.1%	80.3%
May	2,321	-0.9%	79.5%
Jun	2,326	0.2%	79.7%
Jul	2,324	-0.1%	79.6%
Aug	2,261	-2.7%	77.5%
Sep	2,275	0.6%	78.0%
Oct	2,183	-4.0%	74.8%
Nov	2,130	-2.4%	73.0%
Dec	2,080	-2.3%	71.3%
YTD AVG	2,260	-0.8%	77.4%

Last Date Facility was Below 100% Capacity*		
Facility	Date	Current Consecutive Days in 2011 Over Capacity
CJC	12/31/11	0
CDCM	12/31/11	0
CDCF	12/31/11	0
ORC	12/31/11	0
HDC	12/31/11	0
MDF	12/31/11	0

*Between Jan 1, 2011 and Dec 31, 2011

Notes:

- (a) Capacity increased to 807 from 705 in October 2007 through recertification.
- (b) CDCF opened in the middle of March 2006 when all female inmates were moved from MDF.
- (c) Capacity for MDF increased to 1,092 from 892 on November 1, 2005 through recertification. It increased to 1,348 in June 2011. Locally sentenced felon females were moved there in July 2011.
- (d) Total capacity for all facilities increased from 3,679 to 3,781 in October 2007; from 3,781 to 3,842 in December 2007; from 3,842 to 4,010 in February 2008, and from 4,010 to 4,266 in June 2011.
- (e) Total capacity for HDC increased from 474 to 535 in December 2007.
- (f) Total capacity for CDCM increased from 600 to 768 in February 2008.

*Facility totals may not equal the monthly total due to rounding.

Source: DCSO 11:00 pm daily Facility Count Report

Criminal Justice Planning, 1/13/2012.

Adult Physical Arrests

MONTH	2010	2011	% Change		
			Previous Month to Current Month	2010 Month to 2011 Month	Since January 2011
Jan	2,769	3,225	23.2%	16.5%	
Feb	3,210	2,992	-7.2%	-6.8%	-7.2%
Mar	3,720	3,571	19.4%	-4.0%	10.7%
Apr	3,822	3,296	-7.7%	-13.8%	2.2%
May	3,241	3,610	9.5%	11.4%	11.9%
Jun	3,622	3,455	-4.3%	-4.6%	7.1%
Jul	3,626	3,433	-0.6%	-5.3%	6.4%
Aug	3,675	3,717	8.3%	1.1%	15.3%
Sep	3,387	3,503	-5.8%	3.4%	8.6%
Oct	3,253	3,271	-6.6%	0.6%	1.4%
Nov	2,925	3,053	-6.7%	4.4%	-5.3%
Dec	2,618	3,062	0.3%	17.0%	-5.1%
YTD Total	39,868	40,188	Avg: 1.8%	Avg: 1.7%	-5.2%

MONTH	2010 YTD TOTAL	2011 YTD TOTAL	2010 YTD to 2011 YTD % Change
Jan	2,769	3,225	16.5%
Feb	5,979	6,217	4.0%
Mar	9,699	9,788	0.9%
Apr	13,521	13,084	-3.2%
May	16,762	16,694	-0.4%
Jun	20,384	20,149	-1.2%
Jul	24,010	23,582	-1.8%
Aug	27,685	27,299	-1.4%
Sep	31,072	30,802	-0.9%
Oct	34,325	34,073	-0.7%
Nov	37,250	37,126	-0.3%
Dec	39,868	40,188	0.8%

Source: Metropolitan Police Department of Nashville and Davidson County, data pulled on 1/17/2012.

Note: This report includes the number of physical arrests made in Davidson County during the time period above. A physical arrest is a custodial arrest and represents an individual body and not the number of charges issued to a person. The figures above include adult arrestees only.

AVERAGE DAILY POPULATION AND LENGTH OF STAY FOR DHS/ICE INMATES (a)

Month 2011	AVERAGE DAILY POPULATION			MONTHLY CHANGE			CHANGE SINCE JANUARY		
	DHS/ICE DETAINERS (b)	DHS/ICE CUSTODY (c)	TOTAL ALL ICE INMATES	DHS/ICE DETAINERS (b)	DHS/ICE CUSTODY (c)	TOTAL ALL ICE INMATES	DHS/ICE DETAINERS (b)	DHS/ICE CUSTODY (c)	TOTAL ALL ICE INMATES
Jan	3	17	19	60.4%	0.8%	6.4%			
Feb	3	18	21	12.0%	10.9%	11.1%	12.0%	10.9%	11.1%
Mar	2	17	19	-40.1%	-6.5%	-11.3%	-32.9%	3.7%	-1.5%
Apr	2	20	22	3.3%	15.8%	14.6%	-30.7%	20.1%	12.8%
May	2	20	22	-4.9%	-0.3%	-0.7%	-34.1%	19.7%	12.0%
Jun	2	15	17	-11.4%	-22.4%	-21.5%	-41.6%	-7.1%	-12.0%
Jul	2	20	22	10.9%	32.5%	30.4%	-35.3%	23.0%	14.7%
Aug	1	17	18	-25.5%	-16.6%	-17.3%	-51.8%	2.5%	-5.2%
Sep	2	17	19	46.2%	-0.2%	3.2%	-29.5%	2.3%	-2.2%
Oct	2	16	18	-18.2%	-7.4%	-6.9%	-42.4%	-5.3%	-9.0%
Nov	1	13	14	-19.9%	-17.9%	-19.5%	-53.8%	-22.2%	-26.7%
Dec	2	13	15	19.7%	-0.7%	5.4%	-44.7%	-22.8%	-22.8%
AVG	2	17	19	2.7%	-1.0%	-0.5%	-44.7%	-22.8%	-25.9%

Month 2011	AVERAGE LENGTH OF STAY (DAYS) (d)			MONTHLY CHANGE			CHANGE SINCE JANUARY		
	DHS/ICE DETAINERS (b)	DHS/ICE CUSTODY (c)	TOTAL ALL ICE INMATES	DHS/ICE DETAINERS (b)	DHS/ICE CUSTODY (c)	TOTAL ALL ICE INMATES	DHS/ICE DETAINERS (b)	DHS/ICE CUSTODY (c)	TOTAL ALL ICE INMATES
Jan	1.5	2.5	3.0	3.7%	-26.9%	-16.5%			
Feb	1.5	3.1	3.6	-0.2%	23.9%	16.9%	-0.2%	23.9%	16.9%
Mar	1.1	3.8	4.1	-27.4%	23.6%	14.8%	-27.6%	53.2%	34.2%
Apr	1.3	2.8	3.1	15.4%	-25.2%	-23.8%	-16.4%	14.5%	2.2%
May	1.3	2.9	3.2	-1.4%	3.6%	2.3%	-17.6%	18.7%	4.6%
Jun	1.1	2.6	2.9	-10.9%	-10.4%	-7.7%	-26.6%	6.3%	-3.5%
Jul	1.2	3.3	3.6	9.5%	26.4%	22.3%	-19.6%	34.4%	18.0%
Aug	1.2	3.3	3.6	-5.7%	-1.4%	-1.0%	-24.2%	32.5%	16.8%
Sep	1.1	2.8	3.0	-6.5%	-15.0%	-16.4%	-29.1%	12.7%	-2.4%
Oct	1.2	2.9	3.2	9.9%	5.2%	8.5%	-22.1%	18.6%	5.9%
Nov	1.2	3.2	3.4	2.4%	7.8%	4.4%	-20.3%	27.8%	10.6%
Dec	1.2	2.6	3.0	-2.6%	-16.9%	-12.1%	-22.3%	6.2%	-2.8%
AVG	1.2	3.0	3.3	-1.2%	-0.4%	-0.7%	-22.3%	6.2%	-2.8%

Notes:

*Column totals may not sum to Total due to rounding.

(a) In April 2007 the Davidson County Sheriff's Office began the 287 (g) program in conjunction with U.S. Department of Homeland Security/ Immigration and Customs Enforcement (DHS/ICE). This program grants the Sheriff's Office the authority to check the immigration status of all non-U.S. born arrestees.

(b) DHS/ICE Detainers includes inmates who have no active local charges and are being held on a 48-hour detainer for U.S. Department of Homeland Security/Immigration and Customs Enforcement.

(c) DHS/ICE Custody includes inmates who have no active local charges and are being held on a U.S. Department of Homeland Security/Immigration and Customs Enforcement Custody Hold or inmates who have only an active immigration charge.

(d) Average Length of Stay is calculated as of the date released from the Davidson County correctional system. Some inmates spend time both as a DHS/ICE Detainer and then as a DHS/ICE Custody Hold. In these instances the length of stay is reported separately for the two categories, and the total ICE stay length is reported in the "Total All ICE Inmates" column.

Source: Jail Management System, Davidson County Sheriff's Office.