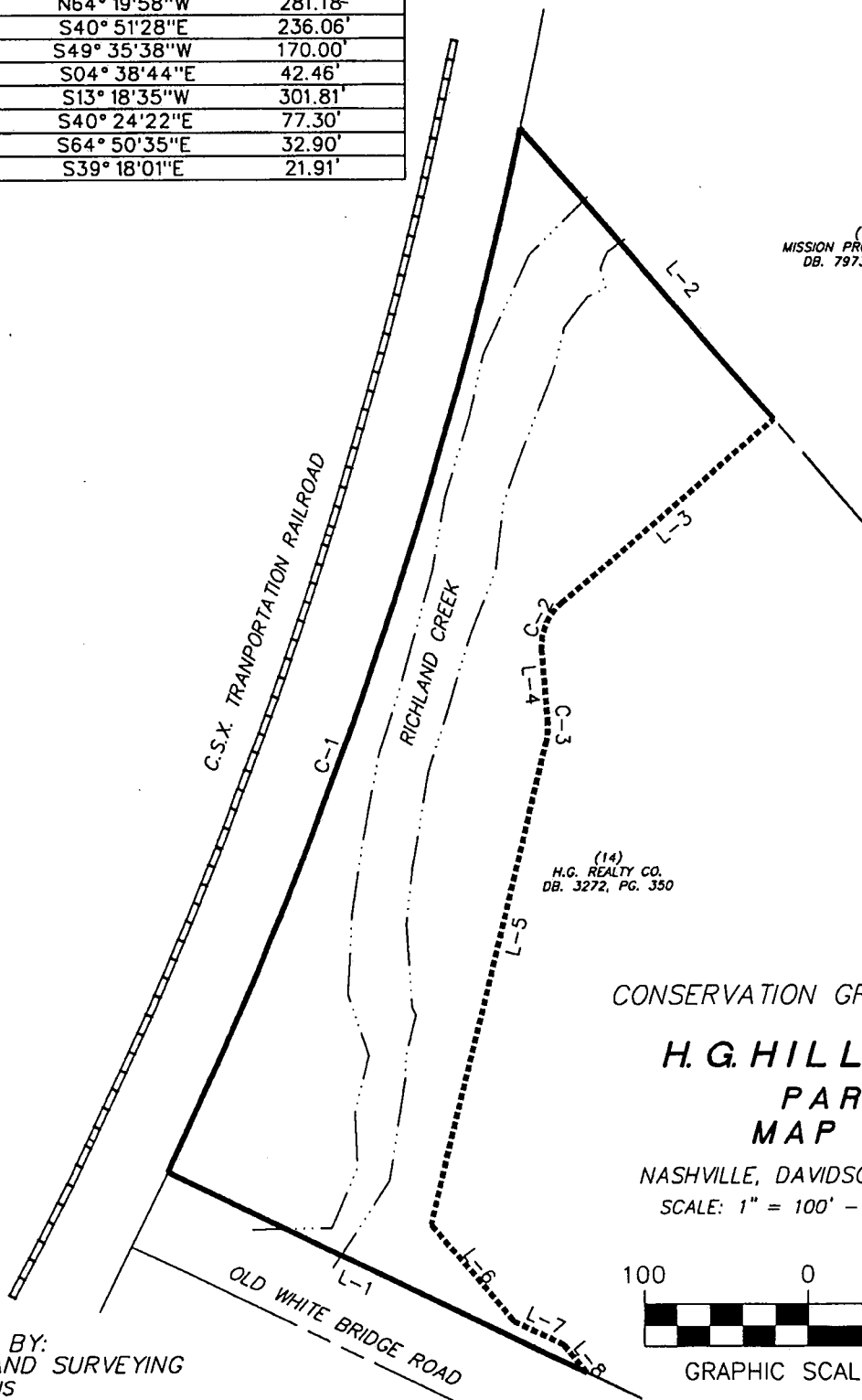


CURVE	RADIUS	LENGTH	TANGENT	CHORD	BEARING	DELTA
C-1	2914.93'	673.39'	338.20'	671.89'	N18° 36'04"E	13° 14'10"
C-2	36.00'	34.08'	18.44'	32.82'	S22° 28'27"W	54° 14'22"
C-3	44.00'	13.79'	6.95'	13.73'	S04° 19'55"W	17° 57'19"

LINE	DIRECTION	DISTANCE
L-1	N64° 19'58"W	281.18'
L-2	S40° 51'28"E	236.06'
L-3	S49° 35'38"W	170.00'
L-4	S04° 38'44"E	42.46'
L-5	S13° 18'35"W	301.81'
L-6	S40° 24'22"E	77.30'
L-7	S64° 50'35"E	32.90'
L-8	S39° 18'01"E	21.91'



(18)
MISSION PROPERTIES INC.
DB. 7973, PG. 527

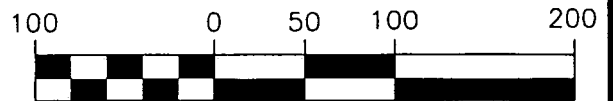
(14)
H.G. REALTY CO.
DB. 3272, PG. 350

CONSERVATION GREENWAY EASEMENT

**H.G. HILL CENTER
PARCEL 14
MAP 103-15**

NASHVILLE, DAVIDSON COUNTY, TENNESSEE

SCALE: 1" = 100' - DATE: MARCH 13, 2007



GRAPHIC SCALE - 1" = 100'

PREPARED BY:
CHERRY LAND SURVEYING
622 WEST IRIS
NASHVILLE, TN. 37204
(615) 269-3972
FAX: (615) 269-9345
EMAIL: cherryls@comcast.net

EXHIBIT "B"

©