

Bordeaux Mulch Facility—862-8640

11400 County Hospital Road
Nashville, TN 37218
Hours: Mon-Sat 7:00 AM - 4 PM

Accepted Items

Untreated & unpainted wood, leaves or grass (in biodegradable bags), brush & tree limbs

Not Accepted

Stumps with roots or any other waste or recyclable material

Drop-off Fees

Brush: \$0.012/lb
Wood Chips: \$16/ton

Mulch Sales

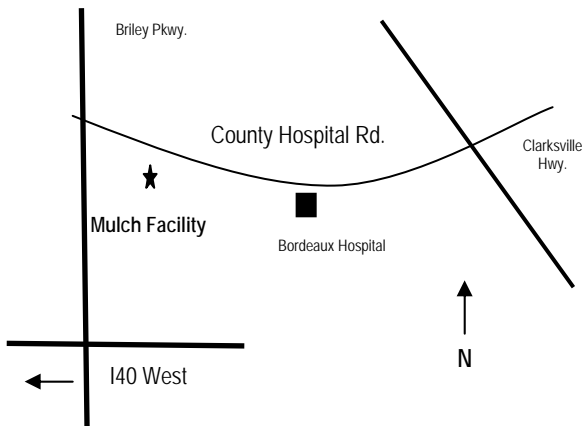
Natural brown hardwood mulch:

- \$25/small compact pickup trucks
- \$40/full size pickup trucks with bed 8 feet long
- \$11/cubic yard for all larger vehicles with over 4 cubic yard capacity

Compost:

- \$30/small compact pickup trucks
- \$45/full size pickup trucks with bed 8 feet long
- \$14/cubic yard for all larger vehicles with over 4 cubic yard capacity

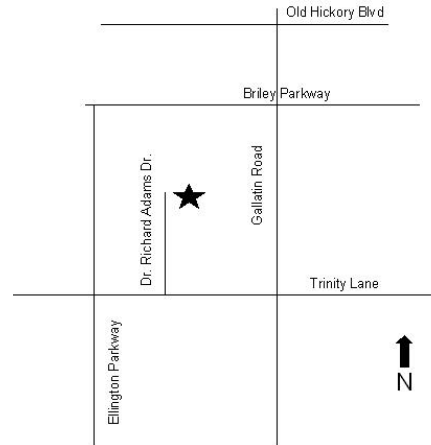
BORDEAUX MULCH FACILITY



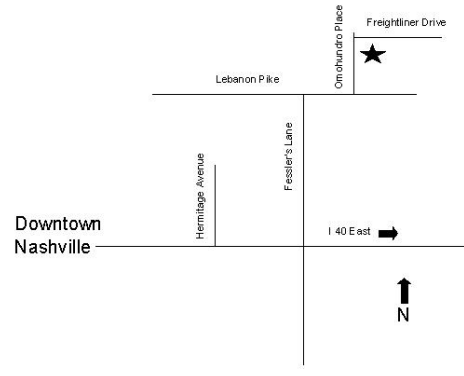
Anderson Lane Center



East Center

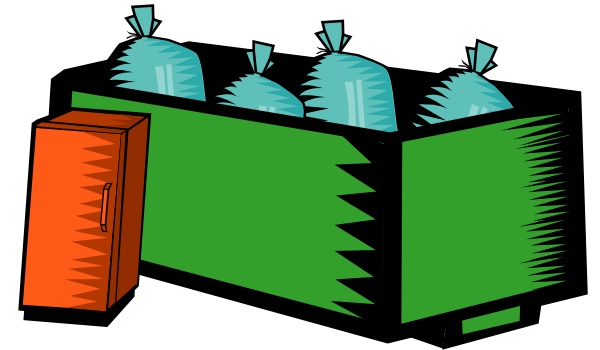


Omohundro Center



Metro Nashville ***PUBLIC WORKS***

Recycling Convenience Centers



Metro Public Works
750 S. 5th Street
Nashville, Tennessee 37206
880-1000
www.nashville.gov/recycle

Waste Disposal Fees — All Centers

Recycling: No Charge

3 Items or Less: No Charge

Household Hazardous Waste (East ONLY): No Charge

Tires with Rims: \$4.00/each up to 4

Small Trailers (less than 4x6x1): \$6.00

Standard Pickups (level loads to top of truck rails): \$6.00

Stacked Pickups (from truck rails to top of cab): \$12.00

All Other Loads: \$12.00 / cubic yard

**NOTE: LOOSE MATERIAL MUST BE BAGGED.
NO WASTE IS TO BE SHOVELED FROM VEHICLES.**

Anderson Lane Center— 860-2588

939A Anderson Lane, Madison, TN 37115

Hours: Tue-Sat 8:30 AM - 5 PM

MUST HAVE DAVIDSON COUNTY ID

LIMIT 2 VISITS/DAY

Accepted Items: Recyclables & Residential Trash

Waste

Residential Trash

Furniture / Appliances

Mattress / Box Spring (any combination 4/month)

Tires (up to 4/month)

Recyclables

Aluminum & Metal Cans

Glass Bottles (clear, green & brown)

Plastic Bottles & Containers (#s 1 - 7)

Cardboard, Newspaper & Mixed Paper

Items Not Accepted

Commercial Waste / Waste in Commercial Vehicles

Vehicles with Commercial Tags

Construction & Demolition Waste

Air Conditioners

Items Containing Freon

Hazardous Waste of Any Type

Computers / Monitors

Gas Tanks

Unpainted & Untreated Wood / Leaves / Brush

Asbestos (shingles, flooring, etc.)

Roofing Shingles

Rock / Brick / Dirt

Medical Waste / Radioactive Material

Ammunition / Flares / Fireworks

East Center — 862-8631

943A Dr. Richard G. Adams Drive, Nashville, TN 37207

Hours: Mon -Sat 7:30 AM - 5 PM, Sun Noon - 4 PM

MUST HAVE DAVIDSON COUNTY ID

LIMIT 2 VISITS/DAY & 1 VISIT ON SUNDAY

Accepted Items: Recyclables, Residential Trash & Household Hazardous Waste

Waste

Residential Trash

Furniture / Appliances

Small Amounts of Construction & Demolition

Waste (LIMIT: 1/2 ton pickup stacked to top of bed)

Mattress / Box Spring (any combination 4/month)

Tires (up to 4/month)

Recyclables

Aluminum & Metal Cans

Glass Bottles (clear, green & brown)

Plastic Bottles & Containers (#s 1 - 7)

Cardboard, Newspaper & Mixed Paper

Household Hazardous Waste

Monthly Limit: 15 Gallons or 100 lbs.

Cleaners / Solvents / Cooking Grease

Paints / Paint Thinners

Used Oil / Antifreeze

Batteries / Fluorescent Tubes & Bulbs

Gas Cylinders

Air Conditioners

Computers / Monitors (limit one per resident/month)



Items Not Accepted

Commercial Waste / Waste in Commercial Vehicles

Vehicles with Commercial Tags

Gas Tanks

Unpainted & Untreated Wood / Leaves / Brush

Asbestos (shingles, flooring, etc.)

Roofing Shingles

Rock / Brick / Dirt

Medical Waste / Radioactive Material

Ammunition / Flares / Fireworks

Omohundro Center—880-1955

1019 Omohundro Place, Nashville, TN 37210

Hours: Tue-Sat 8 AM - 4:30 PM

MUST HAVE DAVIDSON COUNTY ID

LIMIT 2 VISITS/DAY

Accepted Items: Recyclables & Residential Trash

Waste

Residential Trash

Furniture / Appliances

Small Amounts of Construction & Demolition

Waste (LIMIT: 1/2 ton pickup stacked to top of bed)

Mattress / Box Spring (any combination 4/month)

Tires (up to 4/month)

Recyclables

Aluminum & Metal Cans

Glass Bottles (clear, green & brown)

Plastic Bottles & Containers (#s 1 - 7)

Cardboard, Newspaper & Mixed Paper

Unpainted & Untreated Wood / Leaves / Brush

Computers / Monitors (limit one per resident/month)

Items Not Accepted

Commercial Waste / Waste in Commercial Vehicles

Vehicles with Commercial Tags

Air Conditioners

Items Containing Freon

Hazardous Waste of Any Type

Gas Tanks

Asbestos (shingles, flooring, etc.)

Roofing Shingles

Rock / Brick / Dirt

Medical Waste / Radioactive Material

Ammunition / Flares / Fireworks

”This project is funded under agreement with the State of Tennessee”



Requests for ADA accommodation should be addressed to Yvonne Foote at 862-8700