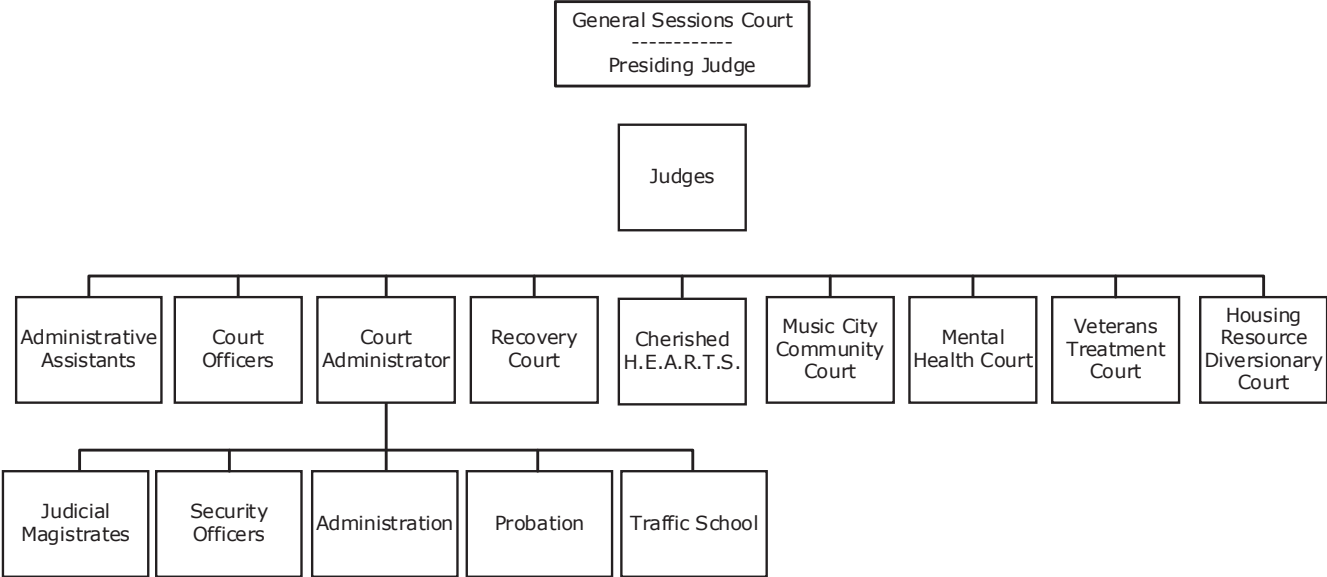


27 General Sessions Court - At a Glance

Mission		Metropolitan General Sessions Court is committed to excellence in administering justice and is a contributing partner working toward a safe and vital community in Nashville-Davidson County.					
Budget Summary		2019-20	2020-21	2021-22			
Expenditures and Transfers:							
GSD General Fund		\$ 12,368,500	\$ 12,502,800	\$ 13,339,100			
Special Purpose Fund		312,200	279,900	216,800			
Total Expenditures and Transfers		\$ 12,680,700	\$ 12,782,700	\$ 13,555,900			
Revenues and Transfers:							
Program Revenue							
Charges, Commissions, and Fees	\$	0	0	0			
Other Governments and Agencies		121,300	122,200	60,000			
Other Program Revenue		85,400	85,400	85,400			
Total Program Revenue	\$	206,700	207,600	145,400			
Non-program Revenue		\$	1,824,900	\$	1,350,000	\$	1,002,400
Transfers From Other Funds and Units		0	0	0			
Total Revenues and Transfers		\$ 2,031,600	\$ 1,557,600	\$ 1,147,800			
Expenditures Per Capita		\$ 18.27	\$ 18.12	\$ 19.06			
Positions	Total Budgeted Positions	147	146	147			
Contacts	Presiding Judge: Sam E Coleman	email: samecoleman@jnsnashville.gov					
	Court Administrator: Kyle Sowell	email: kylesowell@jnsnashville.gov					
	Finance Officer: Tadayoshi Kawawa	email: tadayoshikawawa@jnsnashville.gov					
	Justice A.A. Birch Building						
	408 2nd Avenue North 37201	Phone: 615-862-8317					

27 General Sessions Court - At a Glance

Organizational Structure



Programs

Administration

Administration
Non-allocated Financial Transactions

General Probation

General Probation

Judges

Judges

Specialty Courts and Treatment Programs

Recovery Court
Recovery Court – TN WITS
Mental Health Court
Veteran’s Treatment Court
Music City Community Court Division VIII

Traffic School

Traffic School

27 General Sessions Court - At a Glance

Budget Changes and Impact Highlights

Recommendation			Impact
Probation Office			
Social Worker	GSD	\$67,800 1.00 FTE	Licensed Social Worker position in the Probation Division to conduct assessments and connect clients with services and other resources
Mental Health & Recovery Courts			
Operational Costs	GSD	100,000	To provide drug testing supplies and care of persons funding for clients in Mental Health Court and Recovery Court
Teleconferencing			
Annual Repair & Maintenance	GSD	52,300	To provide operational and well-maintained courtroom teleconferencing equipment
General Sessions Judges			
Salary Increase	GSD	24,300	Increase in salary for General Sessions Judges as set by Metro Charter and state law
Continuing Education			
Travel Expenses	GSD	16,600	To provide for the continuing education needs of 11 judges
General Sessions Grant and Special Fund			
Operating Expenses	SPF	(63,100)	To adjust budget to match projected revenues for Drug Court, Veteran's Treatment Court and Grant Fund, with limited impact on performance
Non-allocated Financial Transactions			
Internal Service Charges*	GSD	34,200	Delivery of centrally provided services including information systems, fleet management, radio, and surplus property
Longevity	GSD	58,000	Reinstatement of longevity pay to support the retention of employees with a significant level of institutional knowledge and commitment
Pay Plan Allocation	GSD	483,100	Supports the hiring and retention of a qualified workforce
General Services District Total		\$836,300 1.00 FTE	
Special Purpose Funds Total		\$(63,100)	
TOTAL		\$773,200 1.00 FTE	

* See Internal Service Charges section for details
 GSD - General Services District
 SPF - Special Purpose Funds