

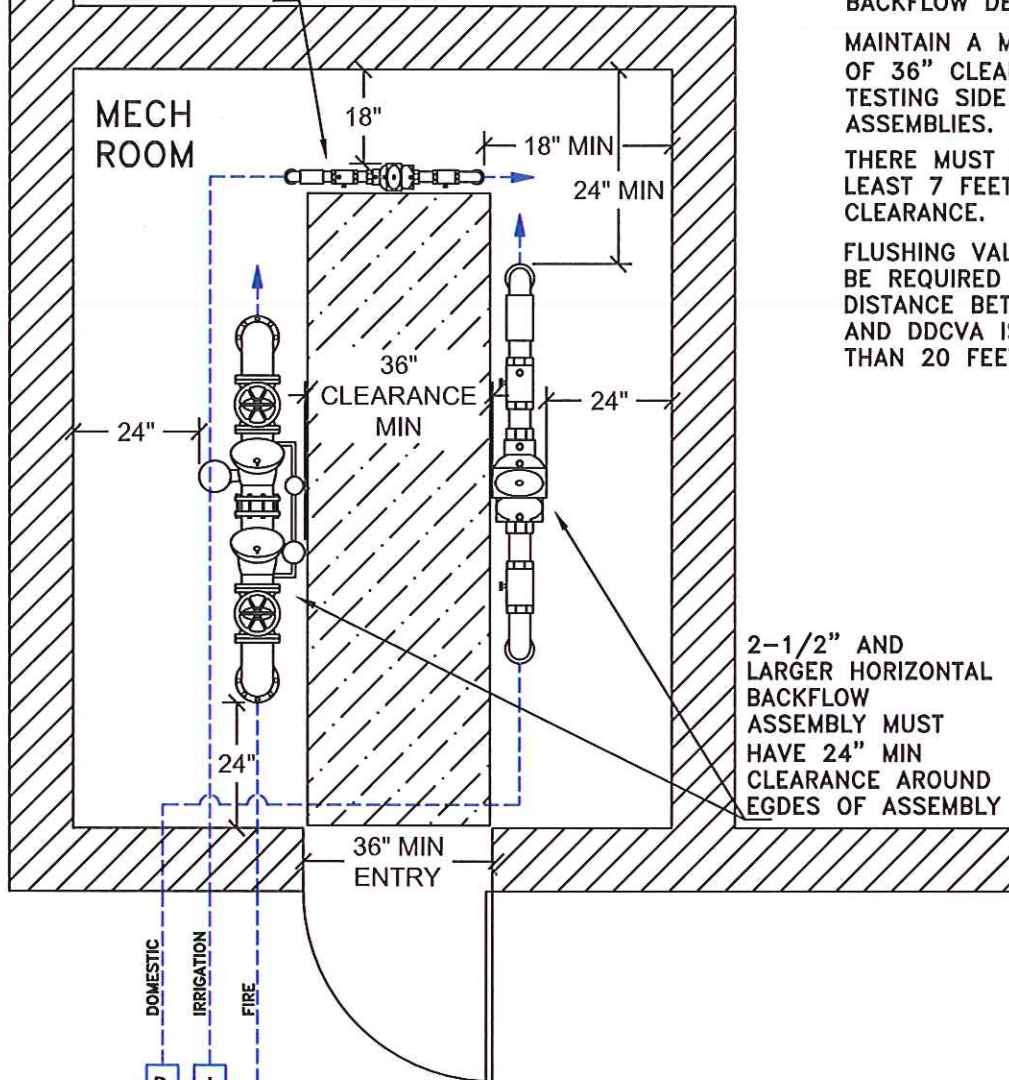
3/4" THROUGH 2"
BACKFLOW ASSEMBLY MUST
HAVE 18" MIN CLEARANCE
AROUND EDGES OF ASSEMBLY

NOTES: THIS DRAWING SHOWS
AN EXAMPLE FOR THE
INSIDE PLACEMENT OF
BACKFLOW DEVICES.

MAINTAIN A MINIMUM
OF 36" CLEARANCE ON
TESTING SIDE OF ALL
ASSEMBLIES.

THERE MUST BE AT
LEAST 7 FEET OF HEAD
CLEARANCE.

FLUSHING VALVE WILL
BE REQUIRED WHEN
DISTANCE BETWEEN TEE
AND DDCVA IS GREATER
THAN 20 FEET.



2-1/2" AND
LARGER HORIZONTAL
BACKFLOW
ASSEMBLY MUST
HAVE 24" MIN
CLEARANCE AROUND
EDGES OF ASSEMBLY

SIDEWALK

WATER MAIN

METRO WATER SERVICES

BACKFLOW PREVENTER INSIDE BUILDING
HORIZONTAL DDCVA SET-UP EXAMPLE

NOT TO SCALE DATE: 11/02/18

DWG. NO. CDETBF12

METRO
WATER SERVICES

Glenn B. Scott

LICENSED DISTRIBUTION OPERATOR

St

DIRECTOR OF WATER AND SEWERAGE SERVICES