

**TRAFFIC CONTROL NOTES:**

1. NOTIFY ALL MUNICIPALITIES PRIOR TO PETTUS ROAD AND BLUE HOLE ROAD CLOSURE. INSTALL DETOUR SIGNING AND CHANGEABLE FLASHING MESSAGE BOARD.
2. BARRICADES SHALL BE PLACED AS NECESSARY.
3. WORK SHALL BE EXPEDITED TO MINIMIZE IMPACTS TO BUSINESSES, RESIDENTS AND SCHOOLS CAUSED BY THE ROAD WORK.
4. ACCESSIBILITY TO PRIVATE RESIDENCES SHALL BE MAINTAINED AT ALL TIMES FOR THE DURATION OF THIS PROJECT.
5. ALL EXISTING TRAFFIC CONTROL ITEMS ARE TO BE REMOVED OR COVERED WITHIN THE PROJECT LIMITS PRIOR TO THE INSTALLATION OF TEMPORARY PAVEMENT MARKINGS AND TRAFFIC CONTROL DEVICES.
6. A UNIFORMED OFFICER IS TO BE PRESENT FOR ALL LANE CLOSURES ON THIS PROJECT.
7. INSTALL CHANGEABLE MESSAGE SIGN UNITS.

**SEQUENCE OF CONSTRUCTION**

**PHASE I:**

THE INSTALLATION OF PHASE I EPSC ITEMS.  
 THE REMOVAL OF EXISTING PAVEMENT WITHIN THE PROJECT LIMITS AND THE INSTALLATION OF TEMPORARY SIGNING AND PETTUS ROAD & BLUE HOLE ROAD CLOSURE SIGNAGE.  
 UTILITY RELOCATION.

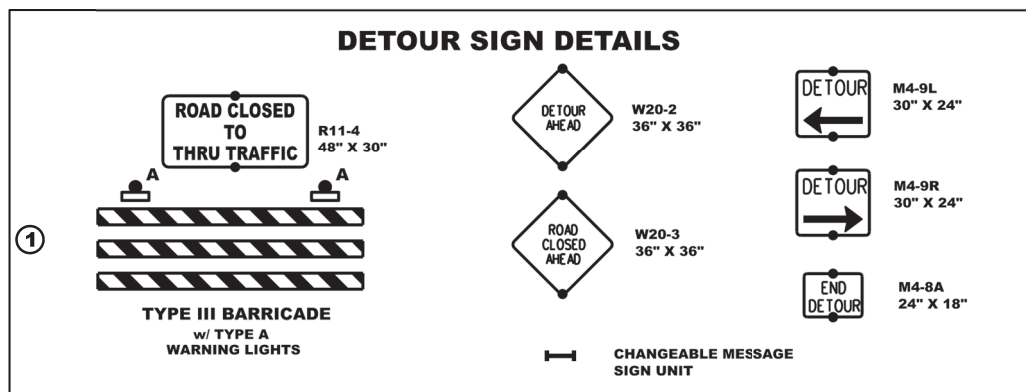
**PHASE II:**

THE INSTALLATION OF PHASE II EPSC ITEMS.  
 COMPLETE SITE GRADING.  
 INSTALLATION CURB & GUTTER AND ASPHALT BASE.  
 INSTALLATION OF STORM SYSTEM.

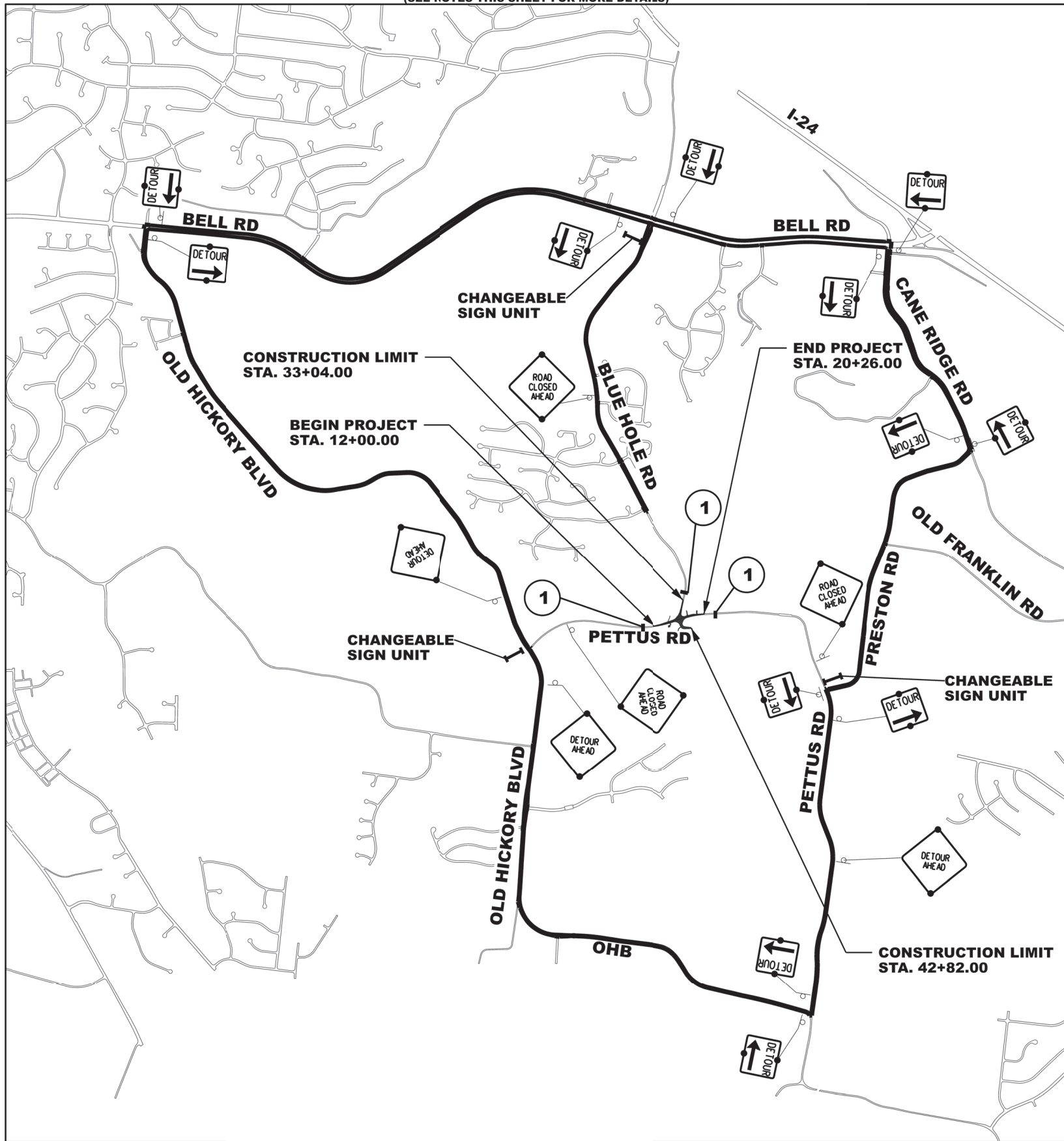
**PHASE III:**

COMPLETE ROADWAY SURFACING.  
 THE COMPLETE INSTALLATION OF ALL PERMANENT PAVEMENT MARKINGS AND SIGNAGE.  
 THE COMPLETE REMOVAL OF ALL TRAFFIC CONTROL DEVICES, TEMPORARY SIGNAGE AND EPSC ITEMS.

**NOTE:** A SUFFICIENT STAND OF PERMANENT VEGETATION MUST BE ESTABLISHED ON ALL DISTURBED AREAS PRIOR TO THE REMOVAL OF EPSC ITEMS.



**PROJECT MAP - BLUE HOLE ROAD**  
 (SEE NOTES THIS SHEET FOR MORE DETAILS)



| NO | DATE | BY | DESCRIPTION |
|----|------|----|-------------|
|    |      |    |             |
|    |      |    |             |
|    |      |    |             |
|    |      |    |             |

**COLLIER ENGINEERING CO., INC.**  
 CONSULTING • DESIGN • CONSTRUCTION

2949 NOLENSVILLE PIKE, NASHVILLE, TN 37211  
 PHONE: (615) 331-1441 FAX: (615) 331-1050

**TRAFFIC CONTROL NOTES**  
 PETTUS ROAD AND BLUE HOLE ROAD  
 PROPOSED ROUNDABOUT  
 METRO PUBLIC WORKS  
 DAVIDSON COUNTY, TENNESSEE



DATE: 05/27/21  
 DESIGNED BY: TJB  
 DRAWN BY: SRN  
 SUPERVISED BY: TJB  
 CHECKED BY: TJB