

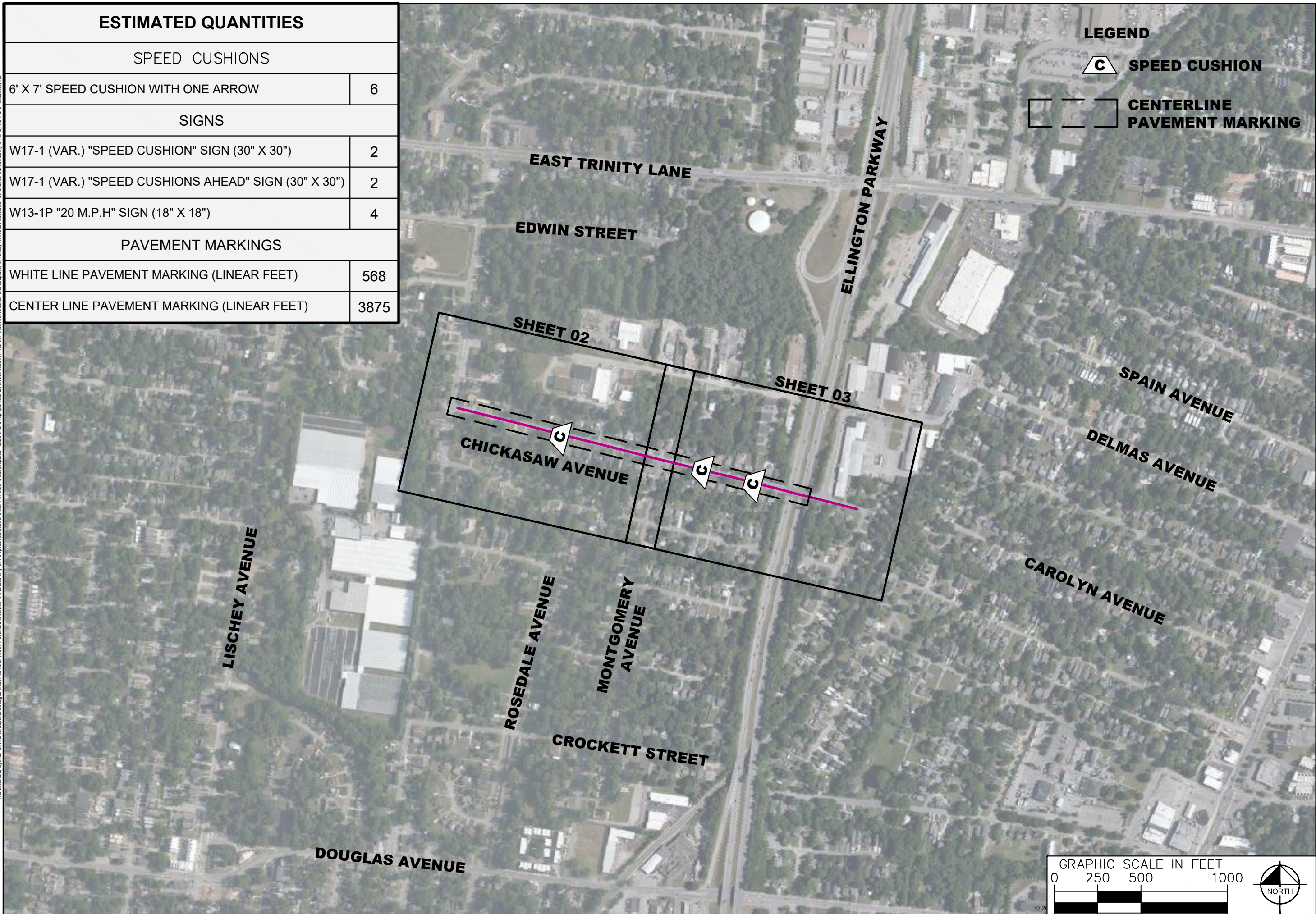
This document, together with the concepts and designs presented herein, is intended only for the specific purpose and client for which it was prepared. Reuse of and improper reliance on this document without written authorization and adaptation by Kimley-Horn and Associates, Inc. shall be without liability to Kimley-Horn and Associates, Inc.

ESTIMATED QUANTITIES	
SPEED CUSHIONS	
6' X 7' SPEED CUSHION WITH ONE ARROW	6
SIGNS	
W17-1 (VAR.) "SPEED CUSHION" SIGN (30" X 30")	2
W17-1 (VAR.) "SPEED CUSHIONS AHEAD" SIGN (30" X 30")	2
W13-1P "20 M.P.H" SIGN (18" X 18")	4
PAVEMENT MARKINGS	
WHITE LINE PAVEMENT MARKING (LINEAR FEET)	568
CENTER LINE PAVEMENT MARKING (LINEAR FEET)	3875

LEGEND

 **SPEED CUSHION**

 **CENTERLINE PAVEMENT MARKING**

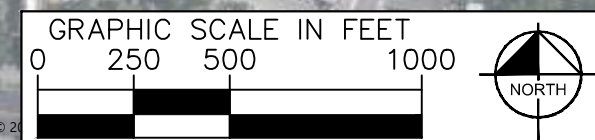


**CHICKASAW AVENUE
TRAFFIC CALMING**
NASHVILLE, TN

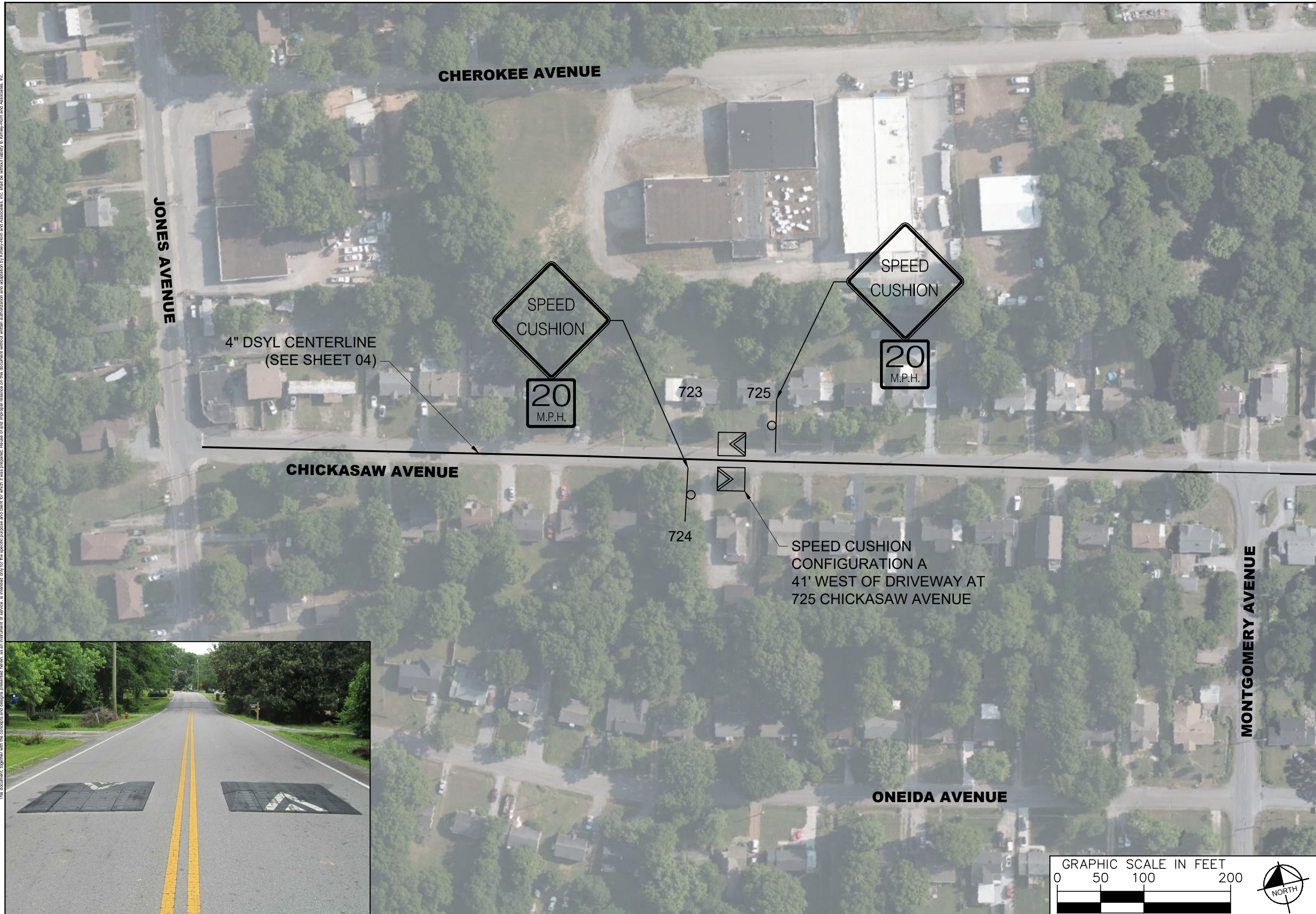


DESIGNED BY:	ALB
DRAWN BY:	SJC
CHECKED BY:	NDOT
DATE:	11/7/2022
KIMLEY-HORN PROJECT NO.	118800030

KEY
SHEET NUMBER
01



This document, together with the concepts and designs presented herein, is intended only for the specific purpose and client for which it was prepared. Reuse and improper reliance on this document without written authorization and adaptation by Kimley-Horn and Associates, Inc. shall be without liability to Kimley-Horn and Associates, Inc.



**CHICKASAW AVENUE
TRAFFIC CALMING**
NASHVILLE, TN

**DRAFT
PRELIMINARY
PLANS**
FOR REVIEW ONLY

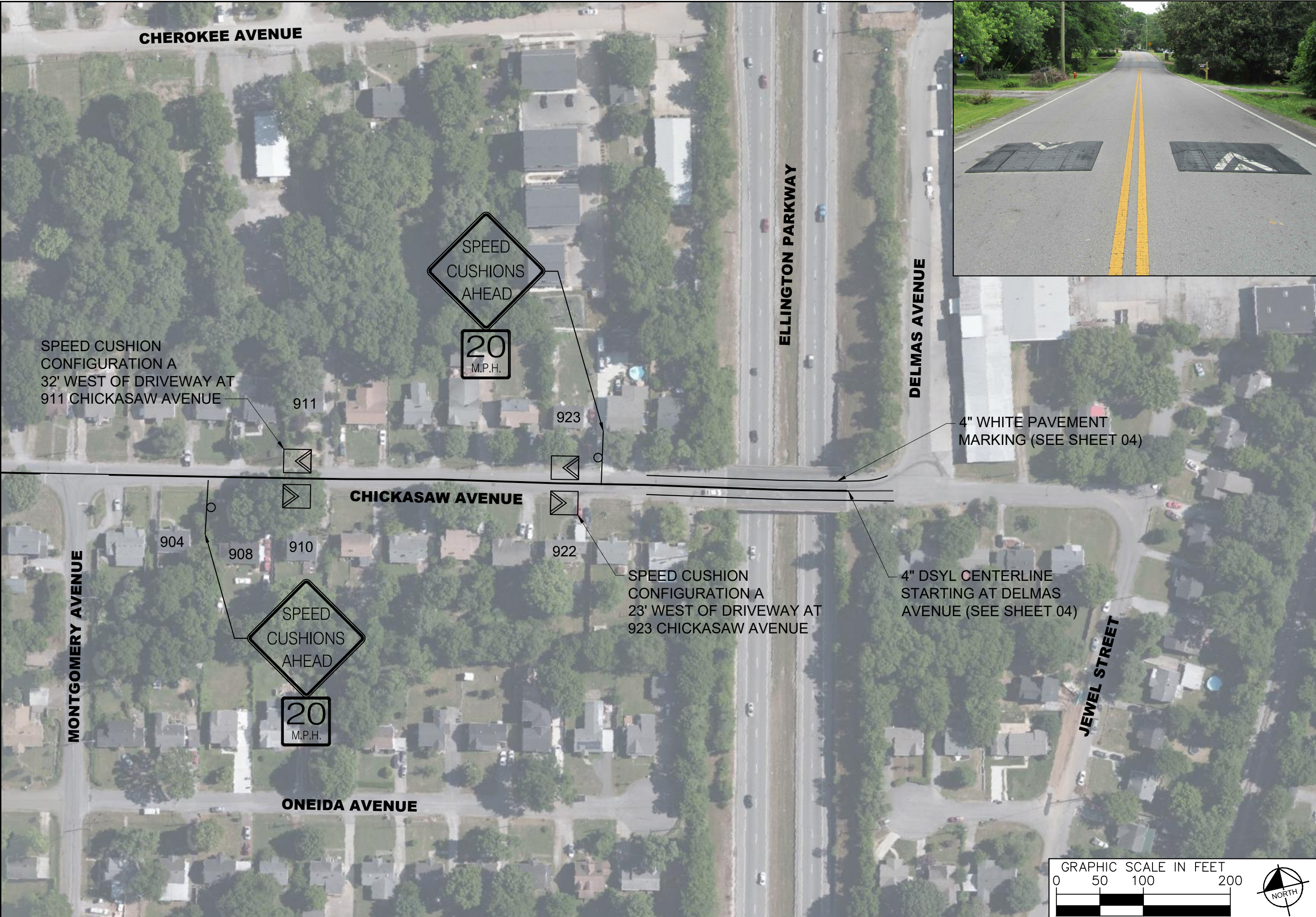
NO.	REVISIONS	DATE	BY
1			
2			
3			
4			
5			
6			
7			
8			
9			
10			

DESIGNED BY: ALB
DRAWN BY: SJC
CHECKED BY: NDOT
DATE: 11/7/2022
KIMLEY-HORN PROJECT NO. 118800030

CONCEPT PLAN
SHEET NUMBER
02



This document, together with the concepts and designs presented herein, is intended only for the specific purpose and client for which it was prepared. Reuse or improper reliance on this document without written authorization and adaptation by Kimley-Horn and Associates, Inc. shall be without liability to Kimley-Horn and Associates, Inc.



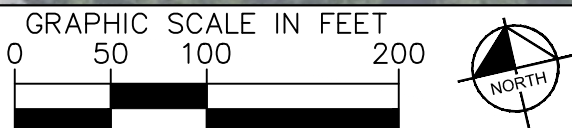
**CHICKASAW AVENUE
TRAFFIC CALMING**
NASHVILLE, TN

**DRAFT
PRELIMINARY
PLANS**
FOR REVIEW ONLY

NO.	DATE	BY
1		
2		
3		
4		
5		
6		
7		
8		
9		
10		

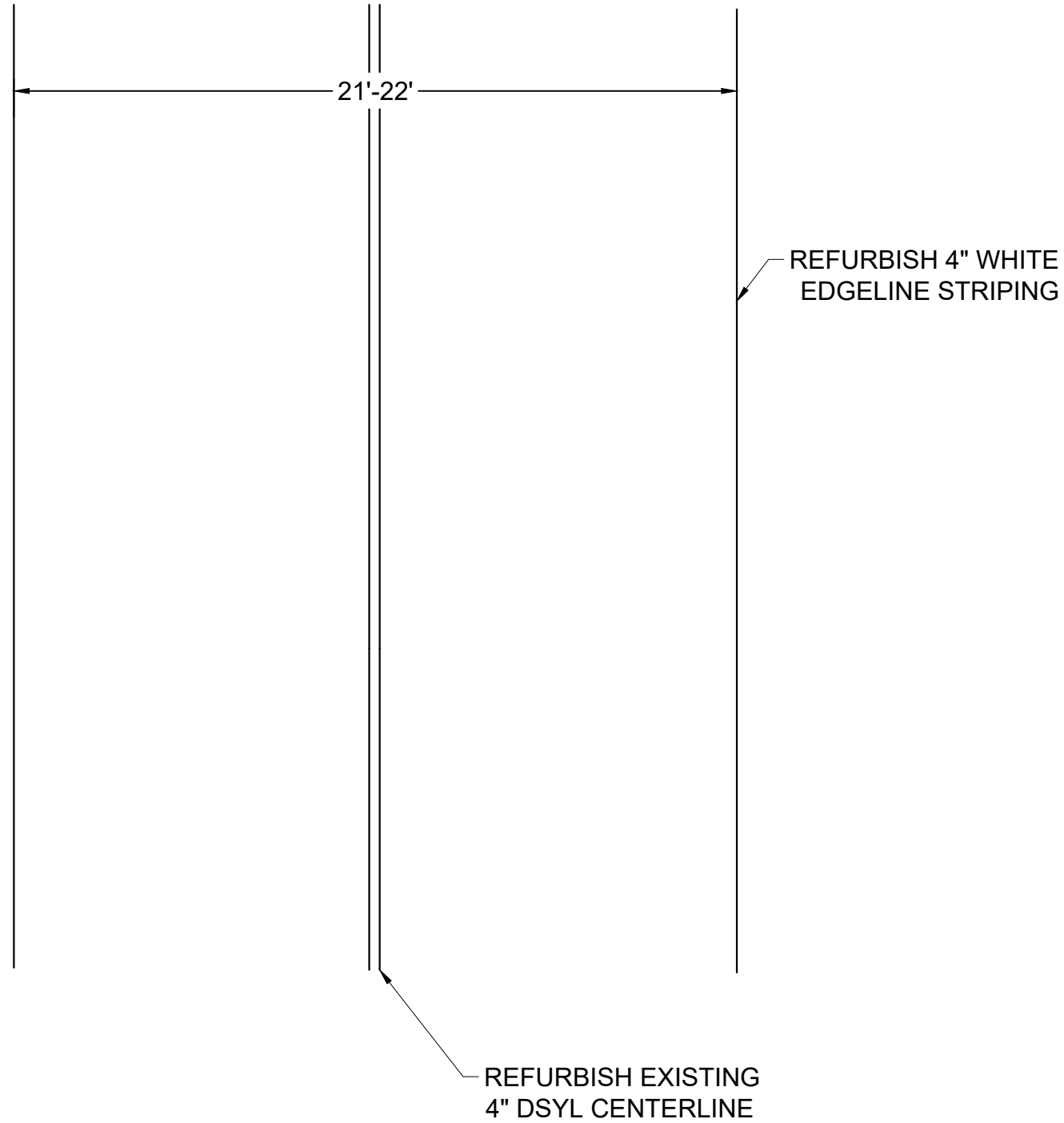
DESIGNED BY: ALB
 DRAWN BY: SJC
 CHECKED BY: NDOT
 DATE: 11/7/2022
 KIMLEY-HORN PROJECT NO. 11880030

CONCEPT PLAN
 SHEET NUMBER
03

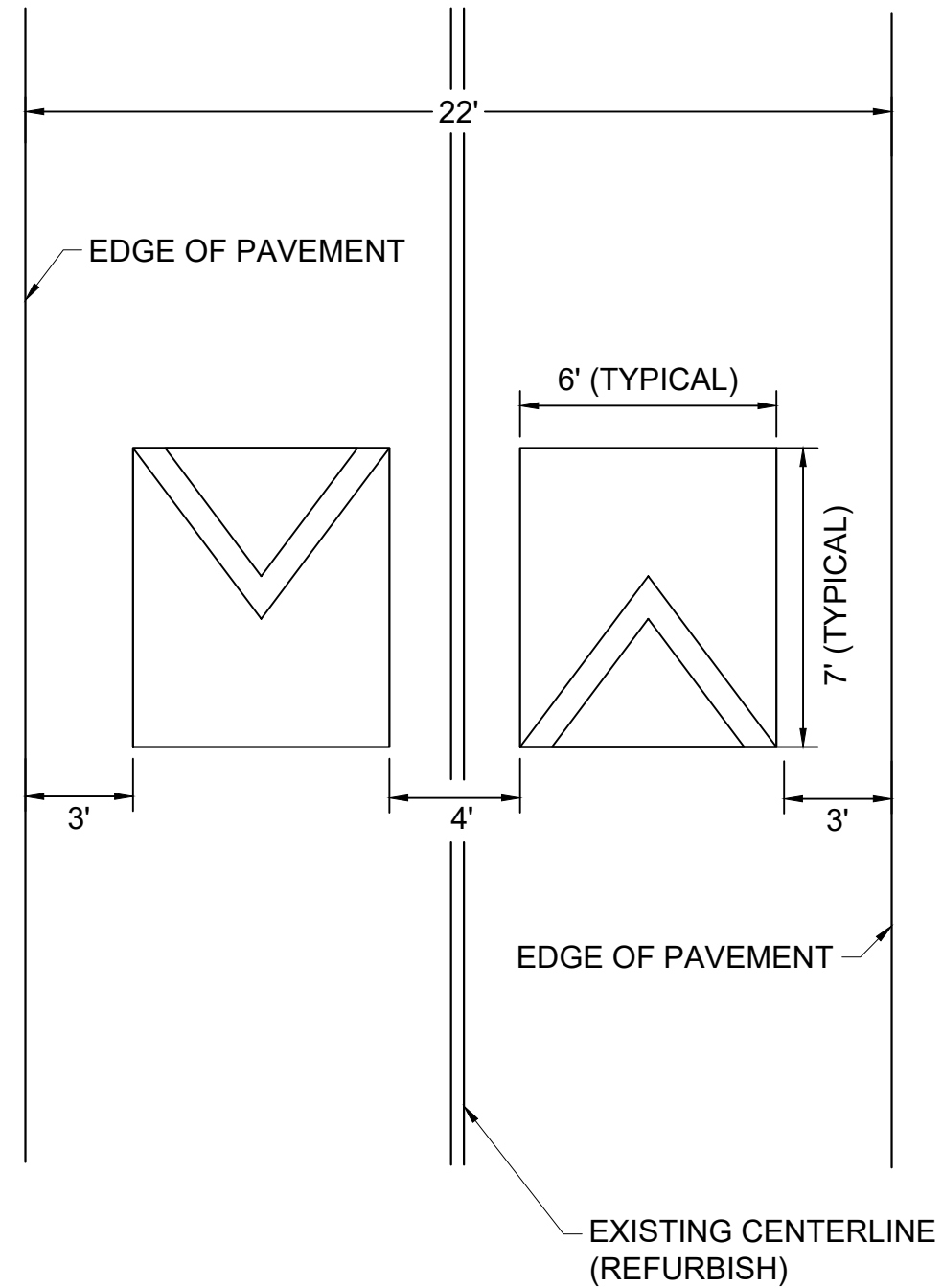


This document, together with the concepts and designs presented herein, is intended only for the specific purpose and client for which it was prepared. Reuse of and improper reliance on this document without written authorization and adaptation by Kimley-Horn and Associates, Inc. shall be without liability to Kimley-Horn and Associates, Inc.

LANE STRIPING DETAIL OVER ELLINGTON PARKWAY BRIDGE



SPEED CUSHION CONFIGURATION A



**CHICKASAW AVENUE
TRAFFIC CALMING**
NASHVILLE, TN

**DRAFT
PRELIMINARY
PLANS**
FOR REVIEW ONLY

NO.	DATE	BY
1		
2		
3		
4		
5		
6		
7		
8		
9		
10		

DESIGNED BY: ALB
 DRAWN BY: SJC
 CHECKED BY: NDOT
 DATE: 11/7/2022
 KIMLEY-HORN PROJECT NO. 118800030

DETAIL
 SHEET NUMBER
04