

This document, together with the concepts and designs presented herein, is intended only for the specific purpose and client for which it was prepared. Reuse of and improper reliance on the document without written authorization and adaptation by Kimley-Horn and Associates, Inc. shall be without liability to Kimley-Horn and Associates, Inc.

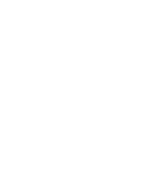
**LEGEND**

 **SPEED CUSHION**

ESTIMATED QUANTITIES	
SPEED CUSHIONS	
6' X 7' SPEED CUSHION WITH ONE ARROW	18
SIGNS	
W17-1 (VAR.) "SPEED CUSHIONS" SIGN (30" X 30")	12
W17-1 (VAR.) "SPEED CUSHIONS AHEAD" SIGN (30" X 30")	2
W13-1P "20 M.P.H" SIGN (18" X 18")	16
DELINEATORS	
4" WHITE FLEXIBLE DELINEATOR	55

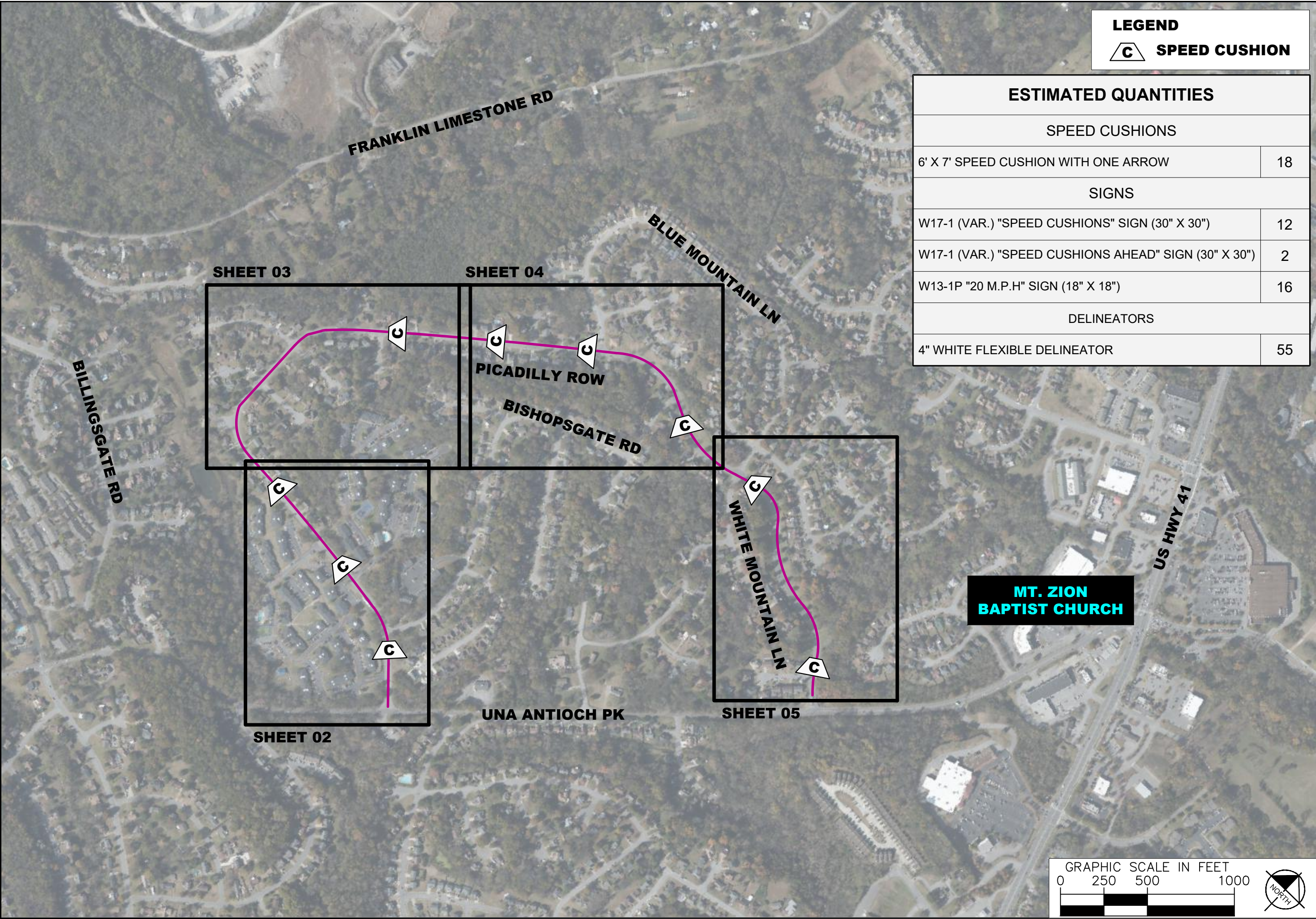


PICCADILLY ROW  
TRAFFIC CALMING  
NASHVILLE, TN

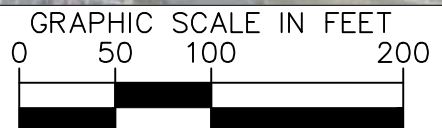


DESIGNED BY:	ALB
DRAWN BY:	EMT
CHECKED BY:	NDOT
DATE:	2/21/2023
KIMLEY-HORN PROJECT NO.:	11890005

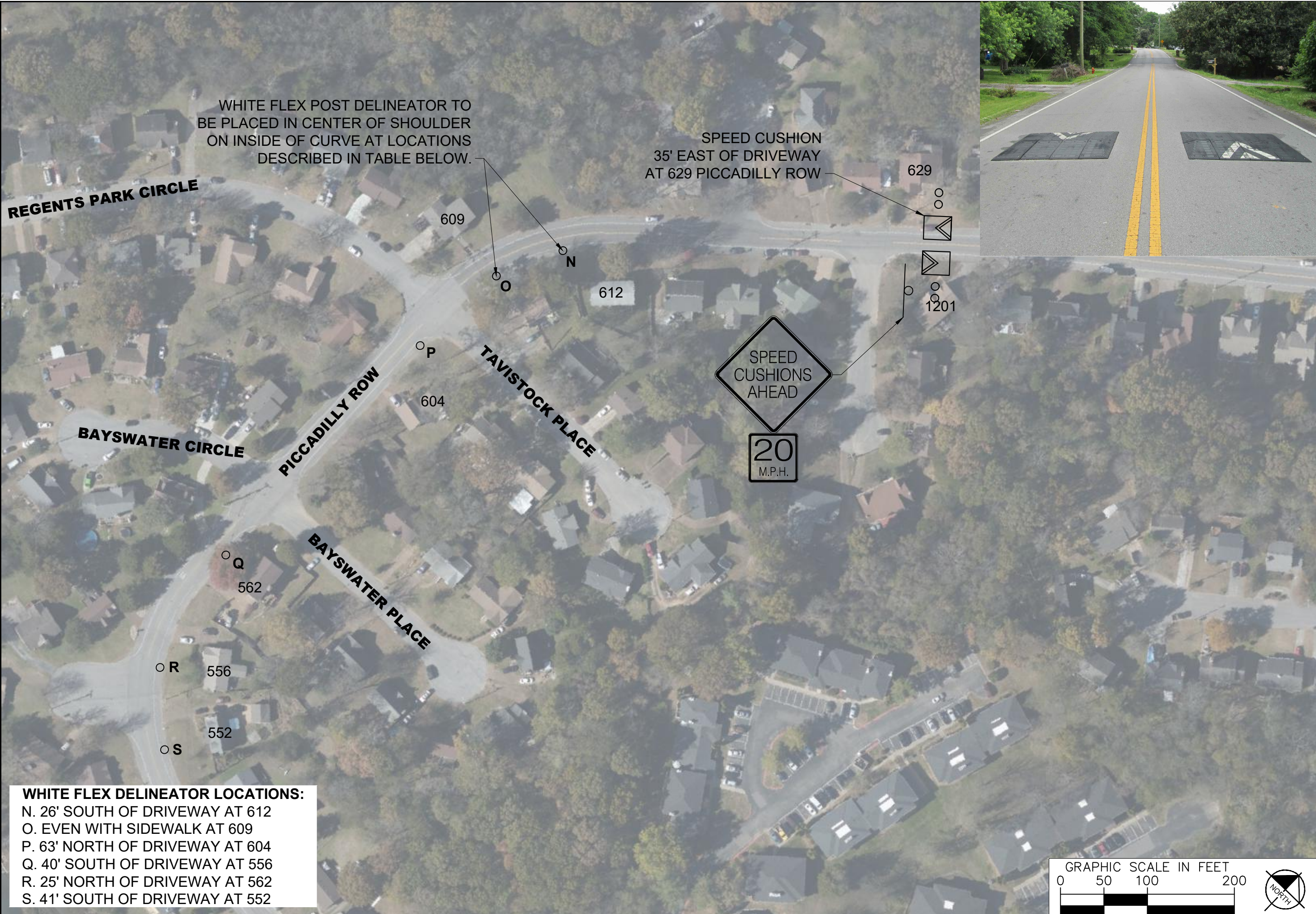
KEY
SHEET NUMBER
<b>01</b>



This document, together with the concepts and designs presented herein, is intended only for the specific purpose and client for which it was prepared. Reuse of and improper reliance on this document without written authorization and adaptation by Kimley-Horn and Associates, Inc. shall be without liability to Kimley-Horn and Associates, Inc.

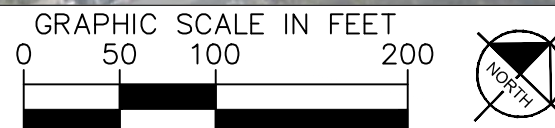


This document, together with the concepts and designs presented herein, is intended only for the specific purpose and client for which it was prepared. Reuse of and improper reliance on the documents without written authorization and adaptation by Kimley-Horn and Associates, Inc. shall be without liability to Kimley-Horn and Associates, Inc.



**WHITE FLEX DELINEATOR LOCATIONS:**

N.	26' SOUTH OF DRIVEWAY AT 612
O.	EVEN WITH SIDEWALK AT 609
P.	63' NORTH OF DRIVEWAY AT 604
Q.	40' SOUTH OF DRIVEWAY AT 556
R.	25' NORTH OF DRIVEWAY AT 562
S.	41' SOUTH OF DRIVEWAY AT 552



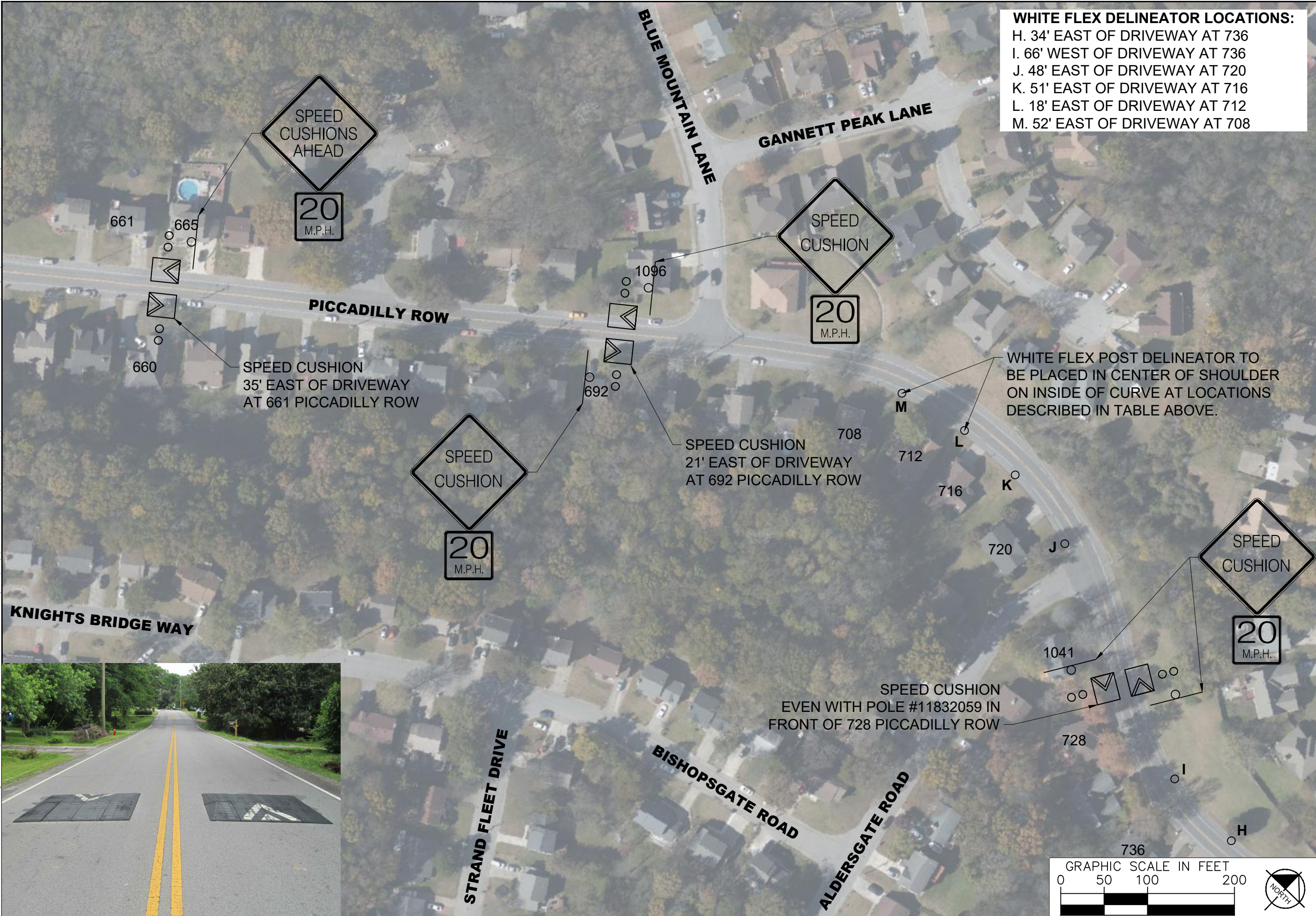
PICCADILLY ROW  
TRAFFIC CALMING  
NASHVILLE, TN



DESIGNED BY:	ALB
DRAWN BY:	EMT
CHECKED BY:	NDOT
DATE:	2/21/2023
KIMLEY-HORN PROJECT NO.:	11890005

CONCEPT  
SHEET NUMBER  
**03**

This document, together with the concepts and designs presented herein, is intended only for the specific purpose and client for which it was prepared. Reuse of and improper reliance on the documents without written authorization and adaptation by Kimley-Horn and Associates, Inc. shall be without liability to Kimley-Horn and Associates, Inc.



**WHITE FLEX DELINEATOR LOCATIONS:**

H.	34' EAST OF DRIVEWAY AT 736
I.	66' WEST OF DRIVEWAY AT 736
J.	48' EAST OF DRIVEWAY AT 720
K.	51' EAST OF DRIVEWAY AT 716
L.	18' EAST OF DRIVEWAY AT 712
M.	52' EAST OF DRIVEWAY AT 708



PICCADILLY ROW  
TRAFFIC CALMING  
NASHVILLE, TN



DESIGNED BY:	ALB
DRAWN BY:	EMT
CHECKED BY:	NDOT
DATE:	2/21/2023
KIMLEY-HORN PROJECT NO.:	11890005
CONCEPT	
SHEET NUMBER	04

This document, together with the concepts and designs presented herein, is intended only for the specific purpose and client for which it was prepared. Reuse of and improper reliance on the documents without written authorization and adaptation by Kimley-Horn and Associates, Inc. shall be without liability to Kimley-Horn and Associates, Inc.



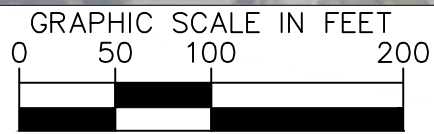
SPEED CUSHION LOCATION 1  
46' NORTH OF POLE #11832049  
AT ORCHARD MOUNTAIN COURT

SPEED CUSHION LOCATION 2  
65' SOUTH OF AREA DRAIN IN  
INTERSECTION OF WHITE  
MOUNTAIN LANE

WHITE FLEX POST DELINEATOR TO  
BE PLACED IN CENTER OF SHOULDER  
ON INSIDE OF CURVE AT LOCATIONS  
DESCRIBED IN TABLE BELOW.

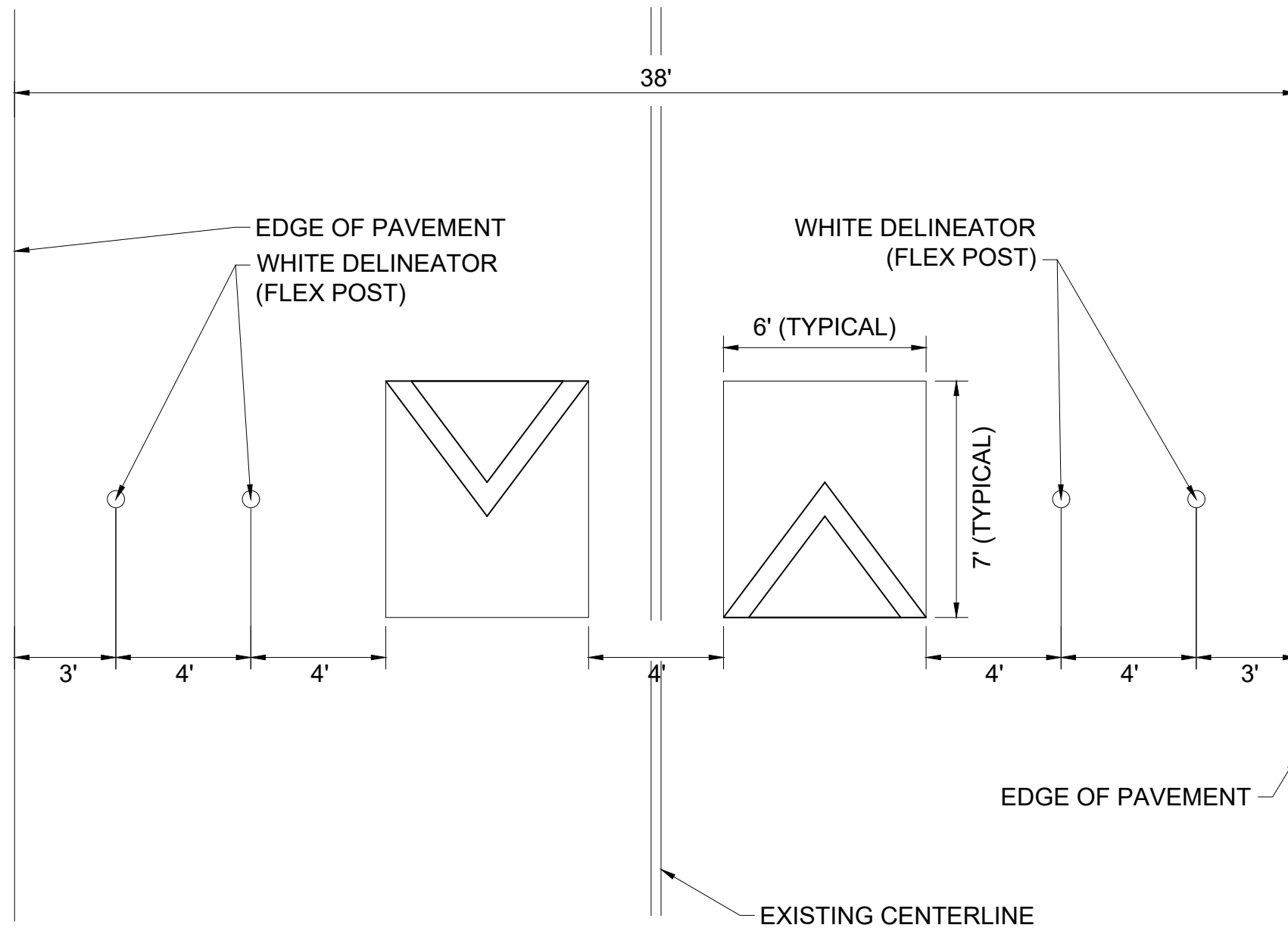
**WHITE FLEX DELINEATOR LOCATIONS:**

A.	100' NORTH OF CUSHION LOCATION 1
B.	200' NORTH OF CUSHION LOCATION 1
C.	300' NORTH OF CUSHION LOCATION 1
D.	600' SOUTH OF CUSHION LOCATION 2
E.	500' SOUTH OF CUSHION LOCATION 2
F.	200' SOUTH OF CUSHION LOCATION 2
G.	100' SOUTH OF CUSHION LOCATION 2



This document, together with the concepts and designs presented herein, is intended only for the specific purpose and client for which it was prepared. Reuse of and improper reliance on the documents without written authorization and adaptation by Kimley-Horn and Associates, Inc. shall be without liability to Kimley-Horn and Associates, Inc.

### SPEED CUSHION CONFIGURATION A



PICCADILLY ROW  
TRAFFIC CALMING  
NASHVILLE, TN



DESIGNED BY:	ALB
DRAWN BY:	EMT
CHECKED BY:	NDOT
DATE:	2/21/2023
KIMLEY-HORN PROJECT NO.:	11890005

DETAIL

SHEET NUMBER

06