

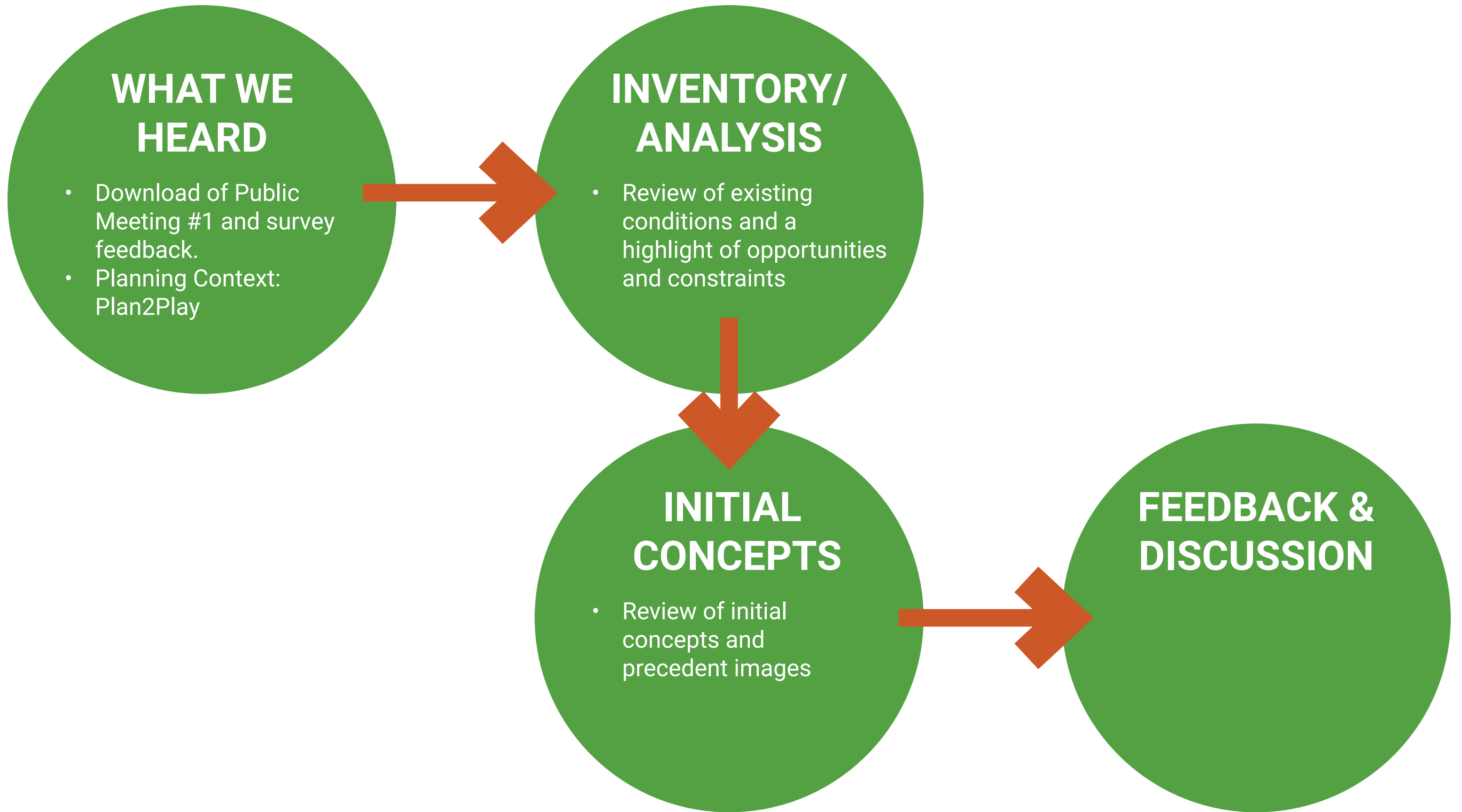


1st + Gay St. Park

Public Meeting #2

MARCH 02, 2023





PUBLIC ENGAGEMENT

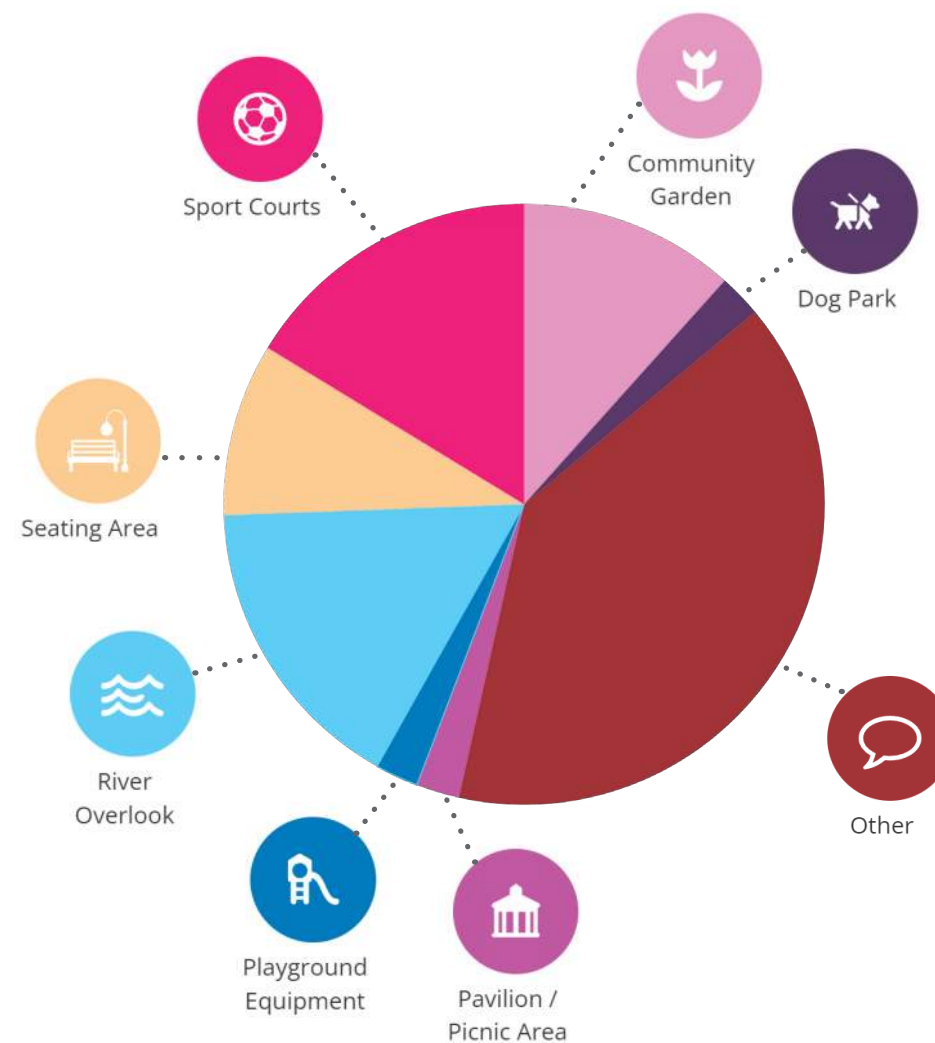
- Interactive map and online survey were available between Jan 1 - March 2, 2023
- Engagement site received 324 visitors
- 43 comments on interactive map
- 24 survey responses
- 8 attendees provided feedback at first public meeting (1/12/2023)

KEY THEMES

- Support for **increased visibility** of and **easy access to the Cumberland River**
- Desire for thoughtful **connection to existing sidewalks and greenway**
- Need for the park to accommodate multiple uses, including **community gatherings, garden spaces, native plantings, sports, and playgrounds**
- Desire for **shade trees, drinking water**
- Concerns regarding ongoing **maintenance and cleanliness**

MAP COMMENTS

- “Other” comments included support for: removing parking, river access, public art, a pump track/skatepark, open space, WIFI, and a splashpad



LOWER RIVER EDGE AND EXISTING STONE RETAINING WALL



VIEW OF RAIL BRIDGE FROM TOP OF EMBANKMENT



EXISTING LAWN BOUNDED BY CUMBERLAND RIVER GREENWAY



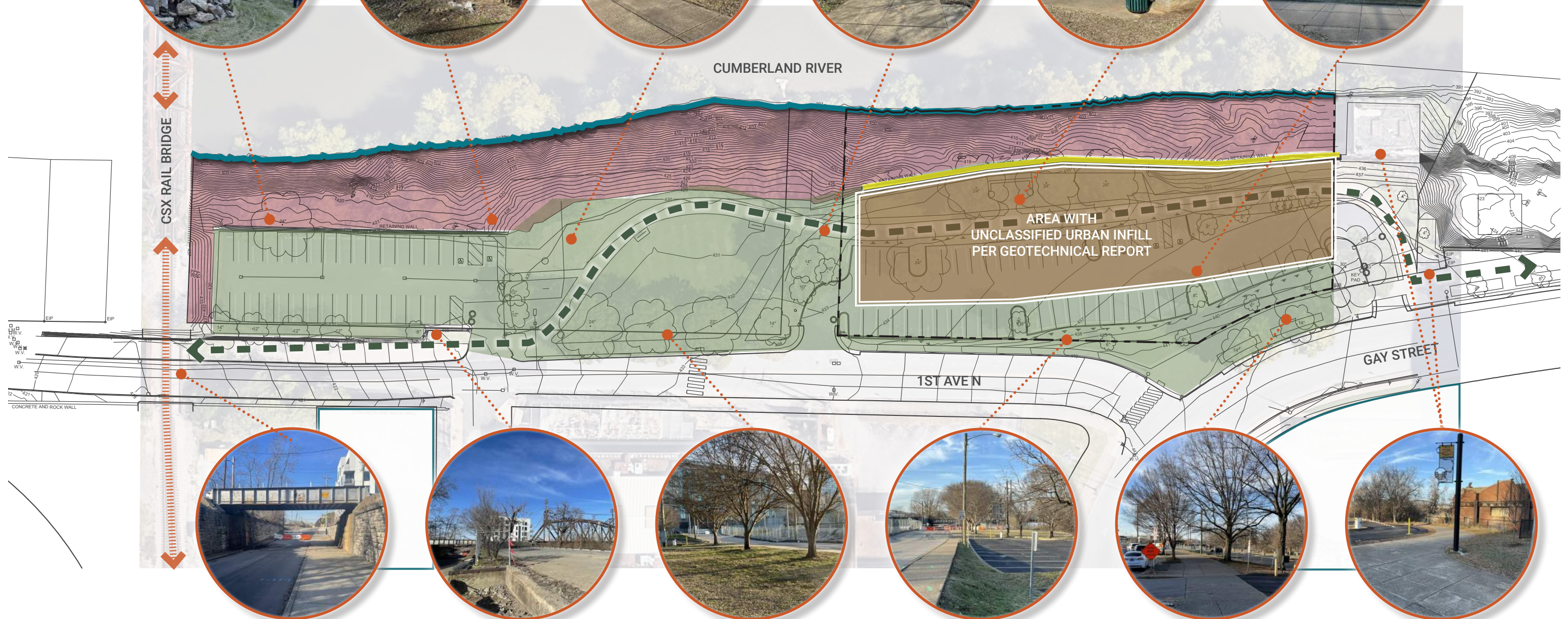
EXISTING CUMBERLAND RIVER GREENWAY



EXISTING STONE WALL AND RIVER OUTLOOK



VIEW OF CAPITOL BUILDING AND NEARBY BUILDINGS



RAILROAD OVERPASS



EXISTING CONCRETE WALL



EXISTING ELM TREES



EXISTING GRADE CHANGE ALONG 1ST AVE. SIDEWALK



STREET TREES ALONG GAY STREET



GREENWAY ENTRANCE AND OLD PUMP HOUSE BEYOND





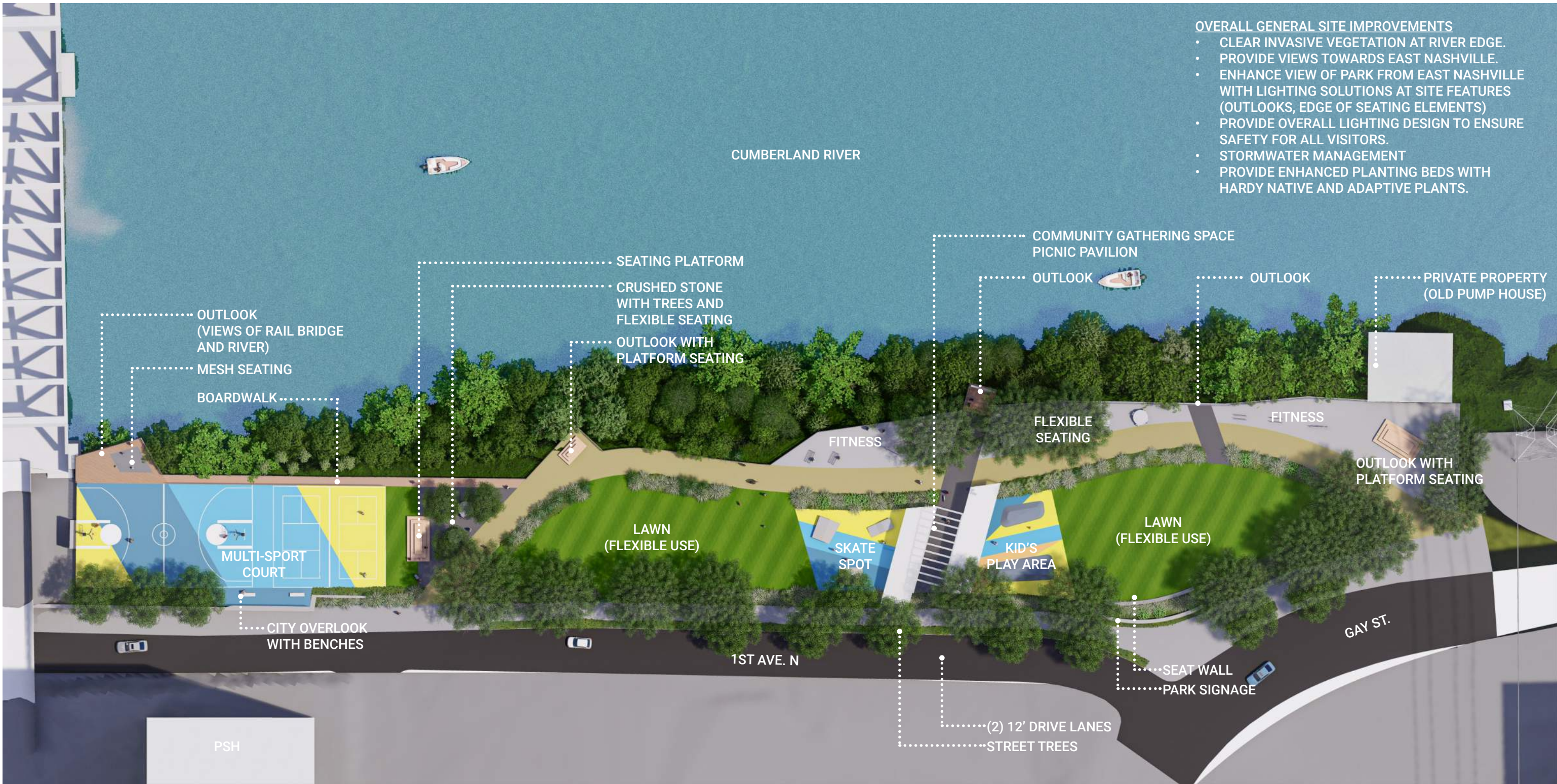
1st + Gay St. Park

Initial Concepts

RAIL BRIDGE



RAIL BRIDGE



- OVERALL GENERAL SITE IMPROVEMENTS**
- CLEAR INVASIVE VEGETATION AT RIVER EDGE.
 - PROVIDE VIEWS TOWARDS EAST NASHVILLE.
 - ENHANCE VIEW OF PARK FROM EAST NASHVILLE WITH LIGHTING SOLUTIONS AT SITE FEATURES (OUTLOOKS, EDGE OF SEATING ELEMENTS)
 - PROVIDE OVERALL LIGHTING DESIGN TO ENSURE SAFETY FOR ALL VISITORS.
 - STORMWATER MANAGEMENT
 - PROVIDE ENHANCED PLANTING BEDS WITH HARDY NATIVE AND ADAPTIVE PLANTS.

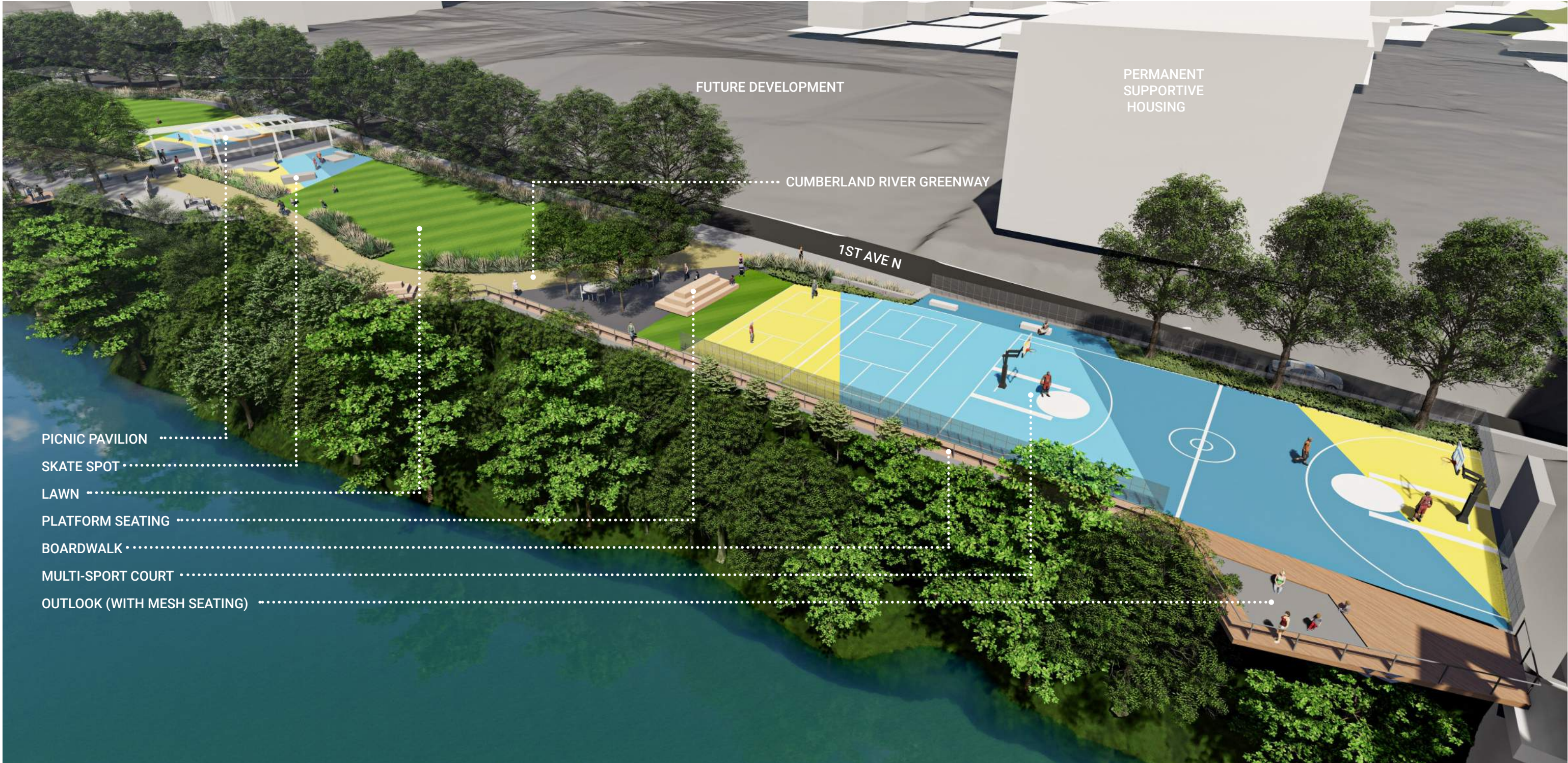
RAIL BRIDGE



RAIL BRIDGE



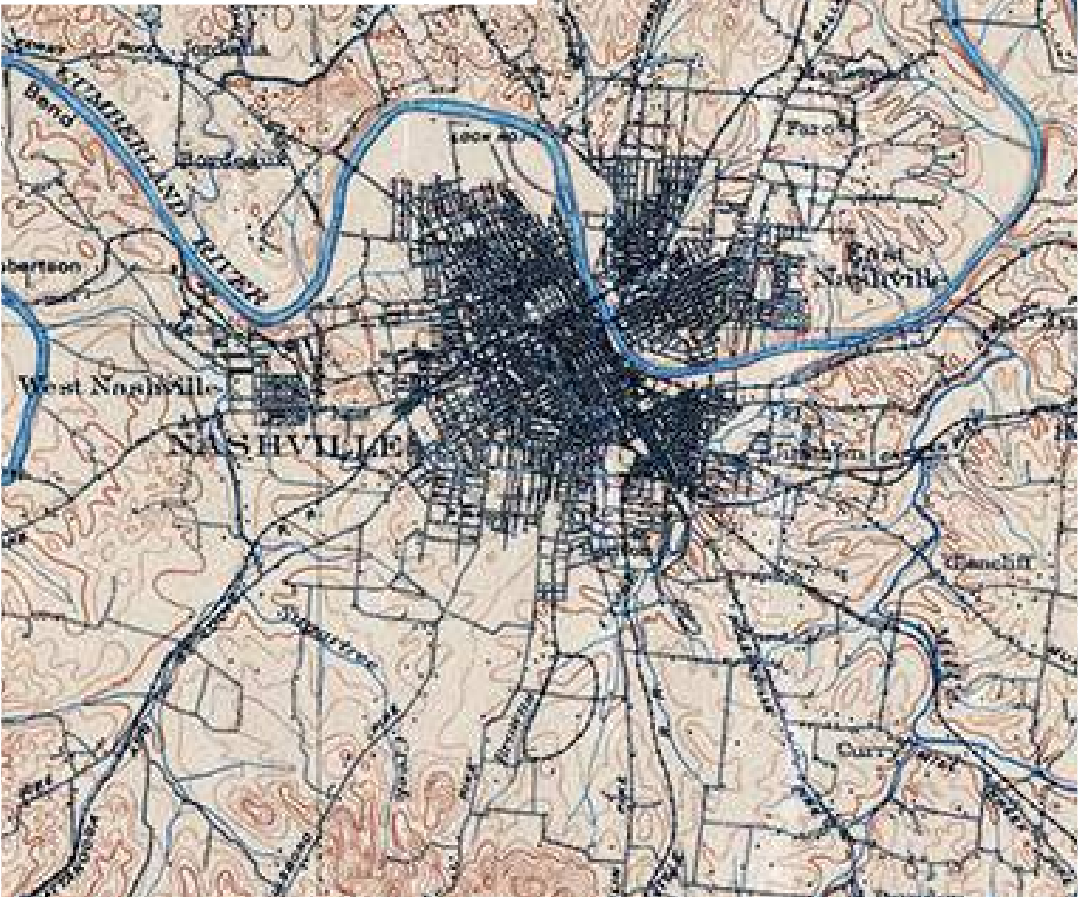
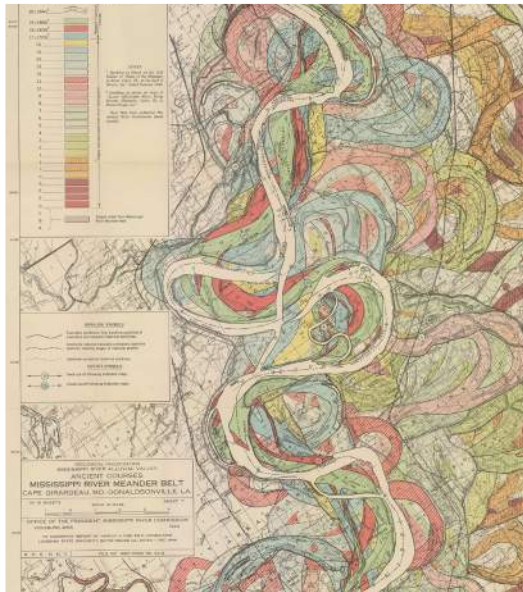
RAIL BRIDGE



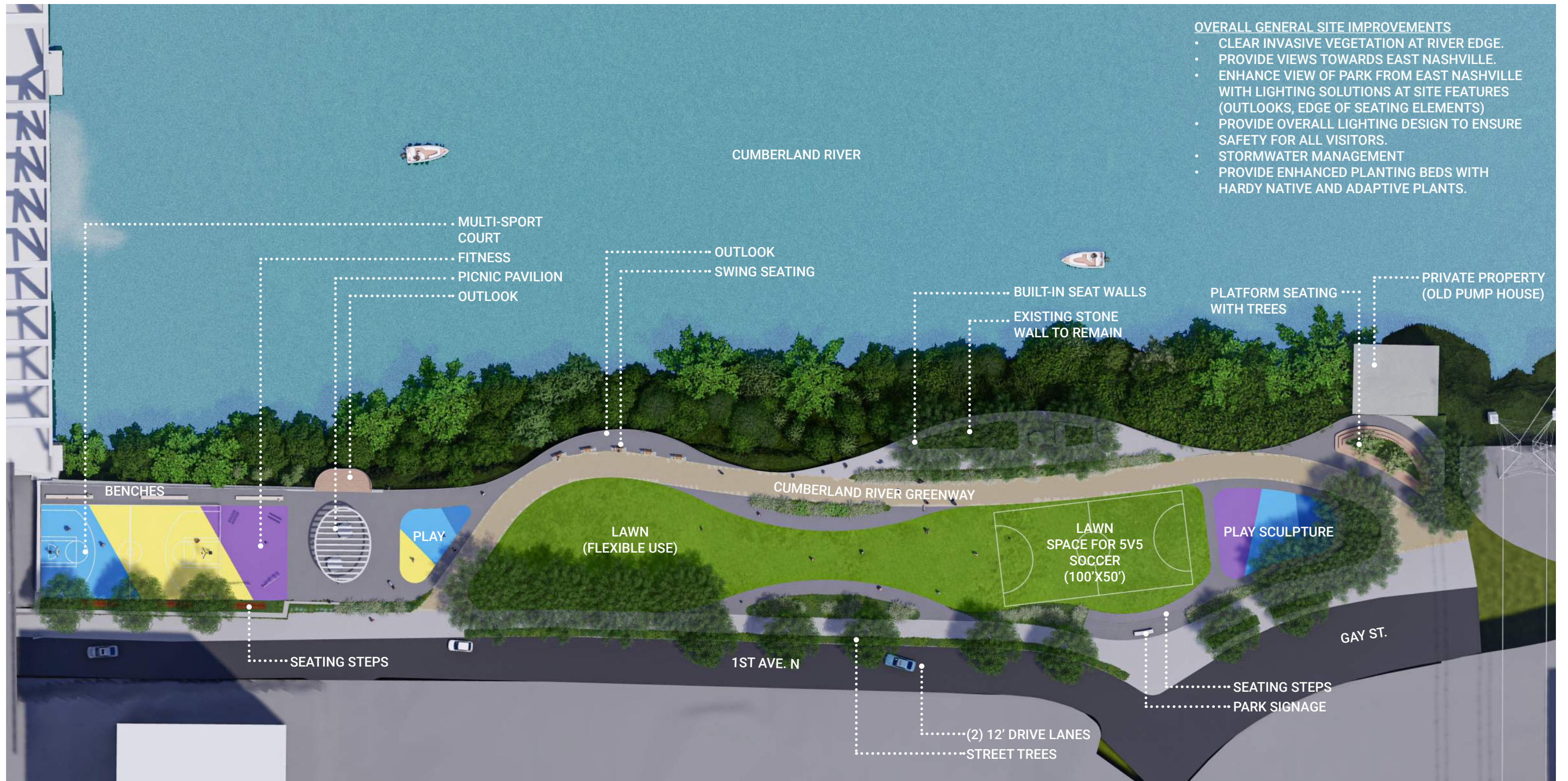
RAIL BRIDGE



MEANDER



MEANDER



- OVERALL GENERAL SITE IMPROVEMENTS**
- CLEAR INVASIVE VEGETATION AT RIVER EDGE.
 - PROVIDE VIEWS TOWARDS EAST NASHVILLE.
 - ENHANCE VIEW OF PARK FROM EAST NASHVILLE WITH LIGHTING SOLUTIONS AT SITE FEATURES (OUTLOOKS, EDGE OF SEATING ELEMENTS)
 - PROVIDE OVERALL LIGHTING DESIGN TO ENSURE SAFETY FOR ALL VISITORS.
 - STORMWATER MANAGEMENT
 - PROVIDE ENHANCED PLANTING BEDS WITH HARDY NATIVE AND ADAPTIVE PLANTS.

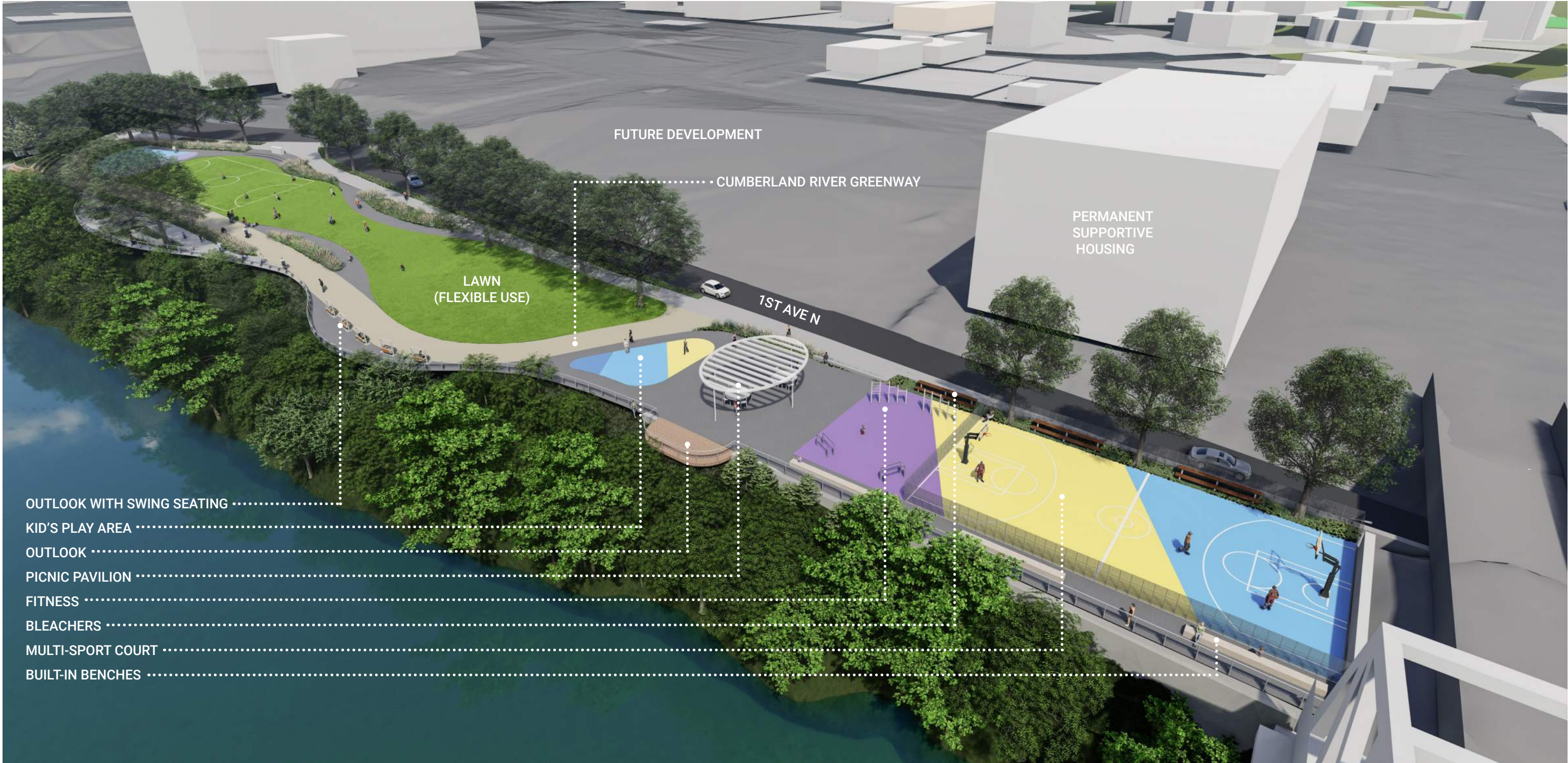
MEANDER



MEANDER



MEANDER



MEANDER





1st + Gay St. Park

Thank you!

MARCH 02, 2023

