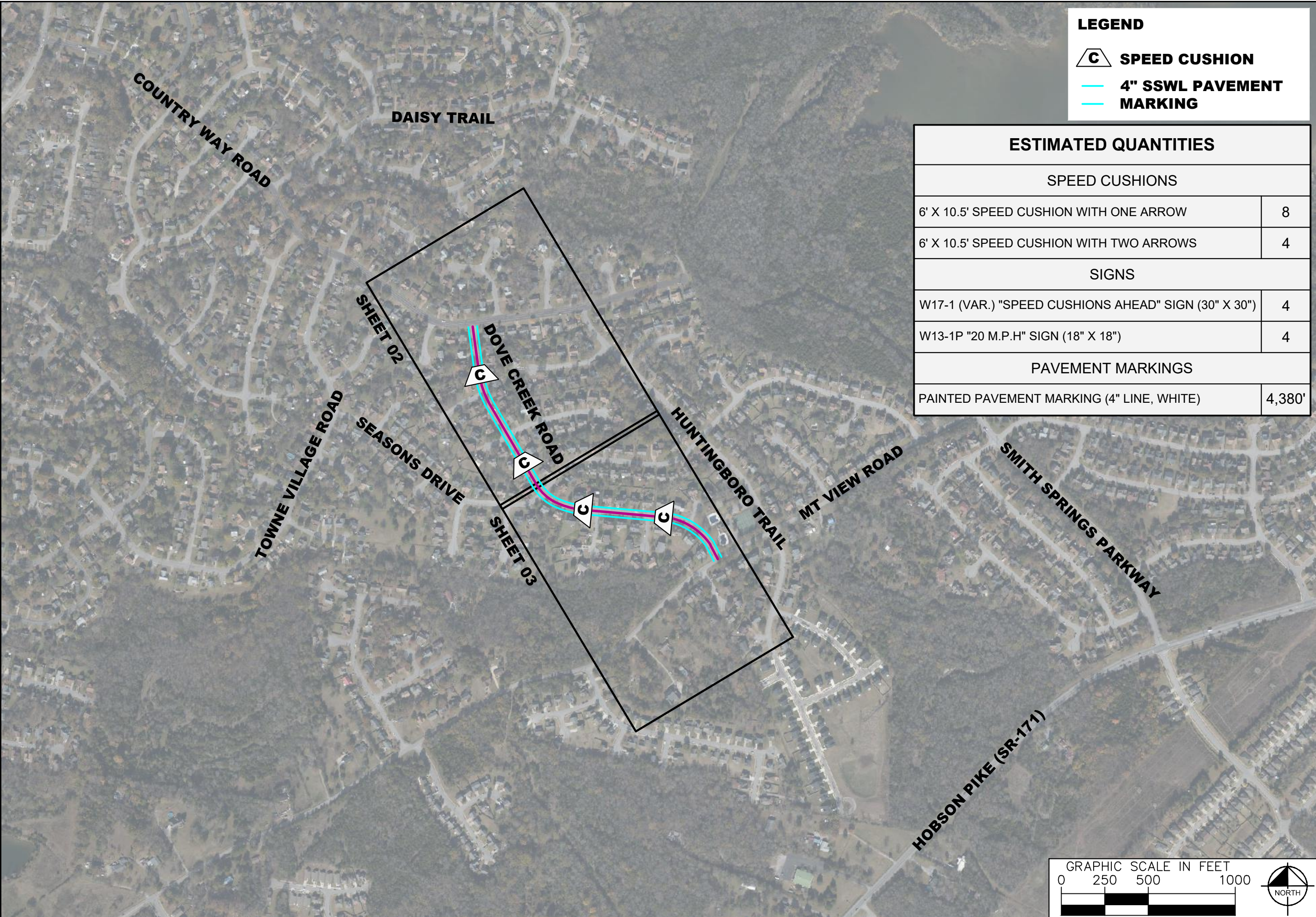


This document, together with the concepts and designs presented herein, is intended only for the specific purpose and client for which it was prepared. Reuse of and improper reliance on this document without written authorization and adaptation by Kimley-Horn and Associates, Inc. shall be without liability to Kimley-Horn and Associates, Inc.



LEGEND

- SPEED CUSHION**
- 4" SSWL PAVEMENT MARKING**

ESTIMATED QUANTITIES	
SPEED CUSHIONS	
6' X 10.5' SPEED CUSHION WITH ONE ARROW	8
6' X 10.5' SPEED CUSHION WITH TWO ARROWS	4
SIGNS	
W17-1 (VAR.) "SPEED CUSHIONS AHEAD" SIGN (30" X 30")	4
W13-1P "20 M.P.H" SIGN (18" X 18")	4
PAVEMENT MARKINGS	
PAINTED PAVEMENT MARKING (4" LINE, WHITE)	4,380'

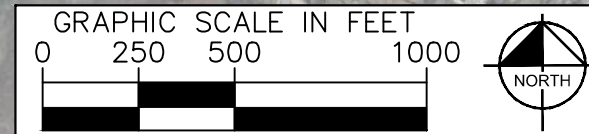


DOVE CREEK ROAD
TRAFFIC CALMING
NASHVILLE, TN



DESIGNED BY:	RBW
DRAWN BY:	EMT
CHECKED BY:	NDOT
DATE:	2/9/2023
KIMLEY-HORN PROJECT NO.	11890005

KEY
SHEET NUMBER
01



This document, together with the concepts and designs presented herein, is intended only for the specific purpose and client for which it was prepared. Reuse of and improper reliance on this document without written authorization and adaptation by Kimley-Horn and Associates, Inc. shall be without liability to Kimley-Horn and Associates, Inc.



SPEED CUSHION CONFIGURATION A
35' WEST OF DRIVEWAY AT
3517 DOVE CREEK ROAD

SPEED CUSHION CONFIGURATION A
45' WEST OF DRIVEWAY AT
3541 DOVE CREEK ROAD

NDOT

DOVE CREEK ROAD
TRAFFIC CALMING
NASHVILLE, TN



Kimley >> Horn

DESIGNED BY:	RBW
DRAWN BY:	EMT
CHECKED BY:	NDOT
DATE:	2/9/2023
KIMLEY-HORN PROJECT NO.:	11890005

CONCEPT PLAN

SHEET NUMBER
02

This document, together with the concepts and designs presented herein, is intended only for the specific purpose and client for which it was prepared. Reuse of and improper reliance on this document without written authorization and adaptation by Kimley-Horn and Associates, Inc. shall be without liability to Kimley-Horn and Associates, Inc.



DOVE CREEK ROAD
TRAFFIC CALMING
NASHVILLE, TN

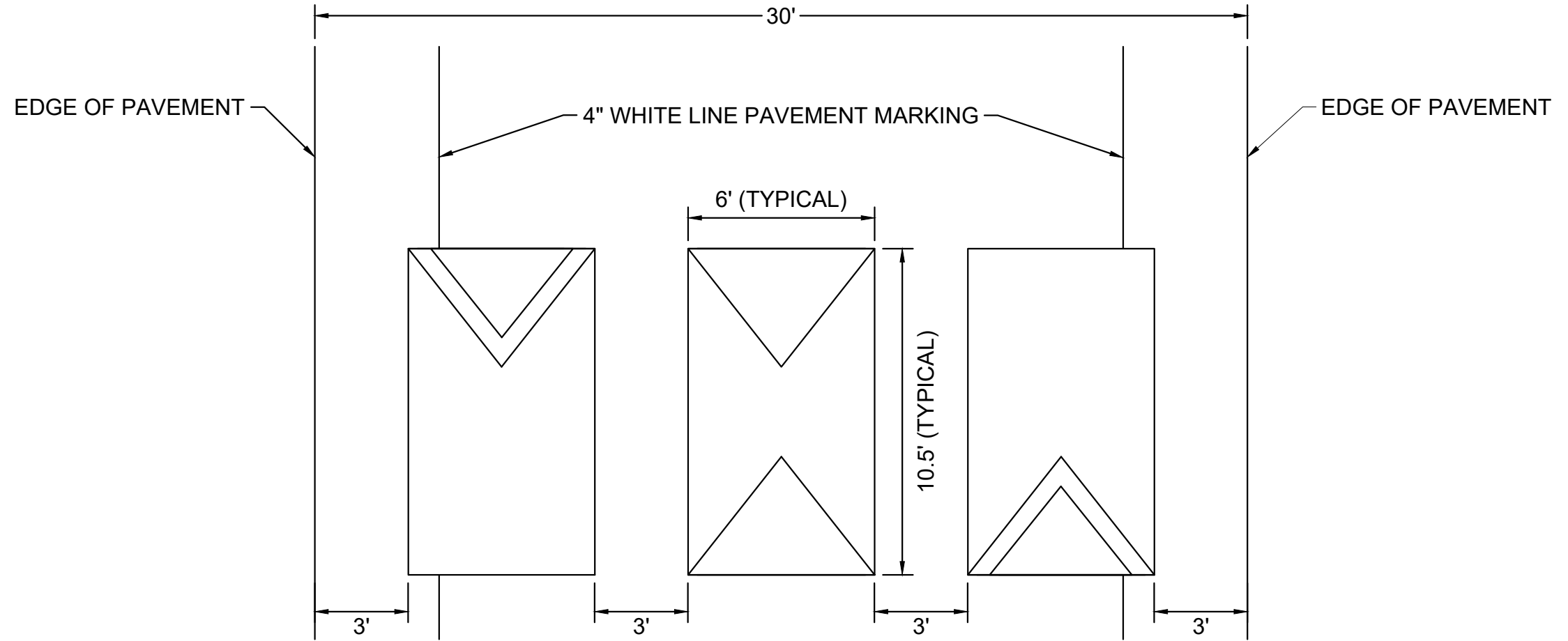


DESIGNED BY:	RBW
DRAWN BY:	EMT
CHECKED BY:	NDOT
DATE:	2/9/2023
KIMLEY-HORN PROJECT NO.:	11890005

CONCEPT PLAN
SHEET NUMBER
03

This document, together with the concepts and designs presented herein, is intended only for the specific purpose and client for which it was prepared. Reuse of and improper reliance on this document without written authorization and adaptation by Kimley-Horn and Associates, Inc. shall be without liability to Kimley-Horn and Associates, Inc.

CONFIGURATION A



DOVE CREEK ROAD
TRAFFIC CALMING
NASHVILLE, TN



DESIGNED BY:	RBW
DRAWN BY:	EMT
CHECKED BY:	NDOT
DATE:	2/9/2023
KIMLEY-HORN PROJECT NO.	11880005

DETAIL

SHEET NUMBER
04