

ESTIMATED QUANTITIES

SPEED CUSHIONS

6' X 10.5' SPEED CUSHION WITH ONE ARROW	18
6' X 10.5' SPEED CUSHION WITH DSYL	1

SIGNING




W17-1 (VAR.) "SPEED CUSHION" SIGN (30" X 30")	10
W13-1P "20 M.P.H" SIGN (18" X 18")	10

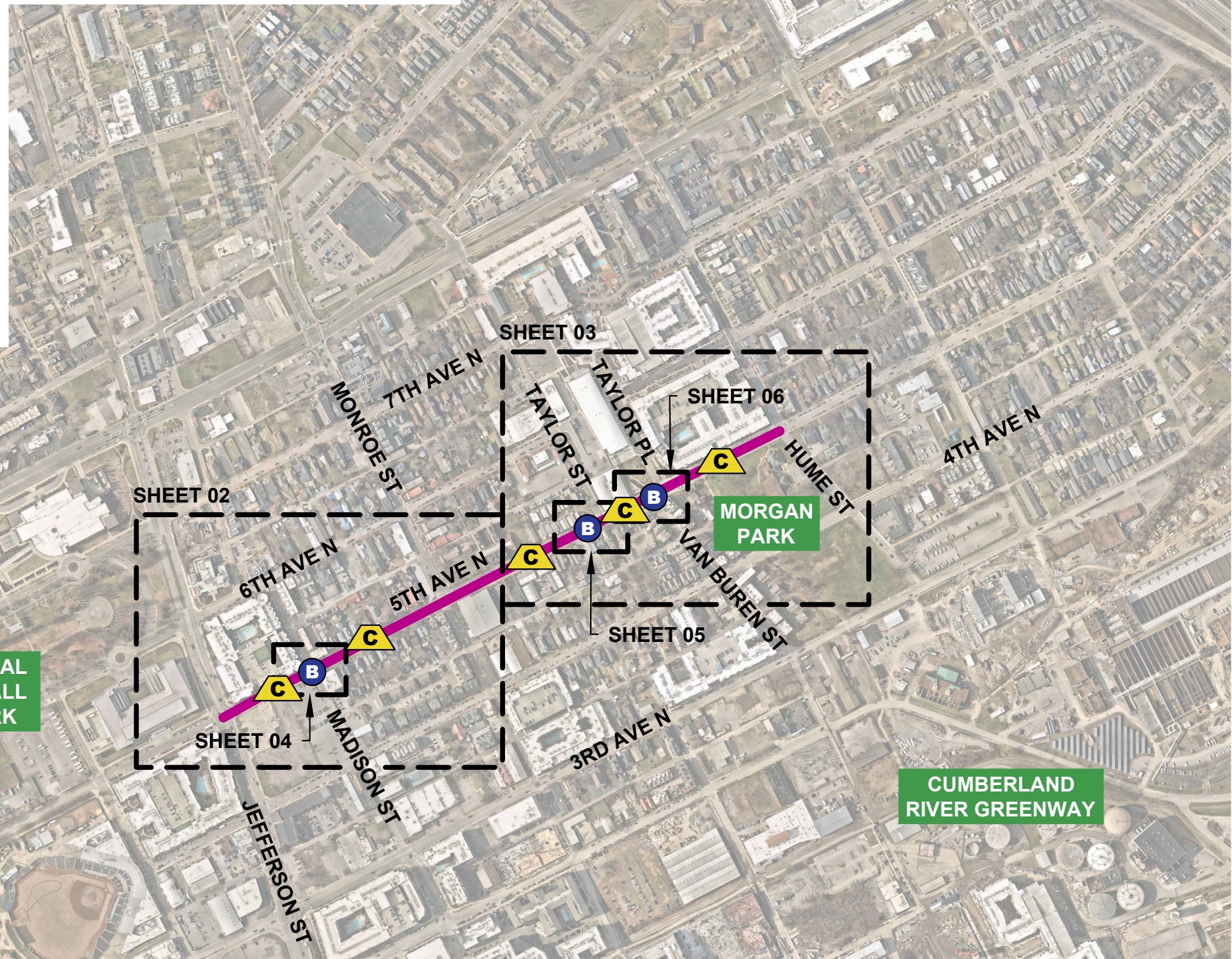
PAVEMENT MARKINGS AND DELINEATORS

4" WHITE FLEXIBLE DELINEATOR	47
4" SOLID WHITE LINE (LF)	60
4" DOUBLE SOLID WHITE LINE (LF)	320
6" SOLID WHITE LINE (LF)	215
24" WHITE STOP BAR (LF)	15

NOTE: ALL LOCATIONS ARE REFERENCED FROM CENTERLINE OF DRIVEWAYS OR OTHER LANDMARKS TO THE CENTER OF SPEED CUSHIONS OR SIGNS.

LEGEND

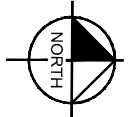
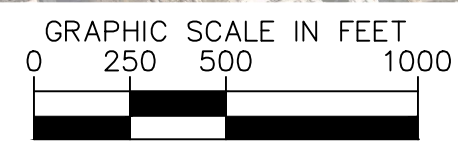
-  LIMITS OF TRAFFIC CALMING PROJECT
-  SPEED CUSHIONS
-  BULB-OUTS



BICENTENNIAL CAPITAL MALL STATE PARK

MORGAN PARK

CUMBERLAND RIVER GREENWAY



AERIAL IMAGERY SOURCE: NEARMAP

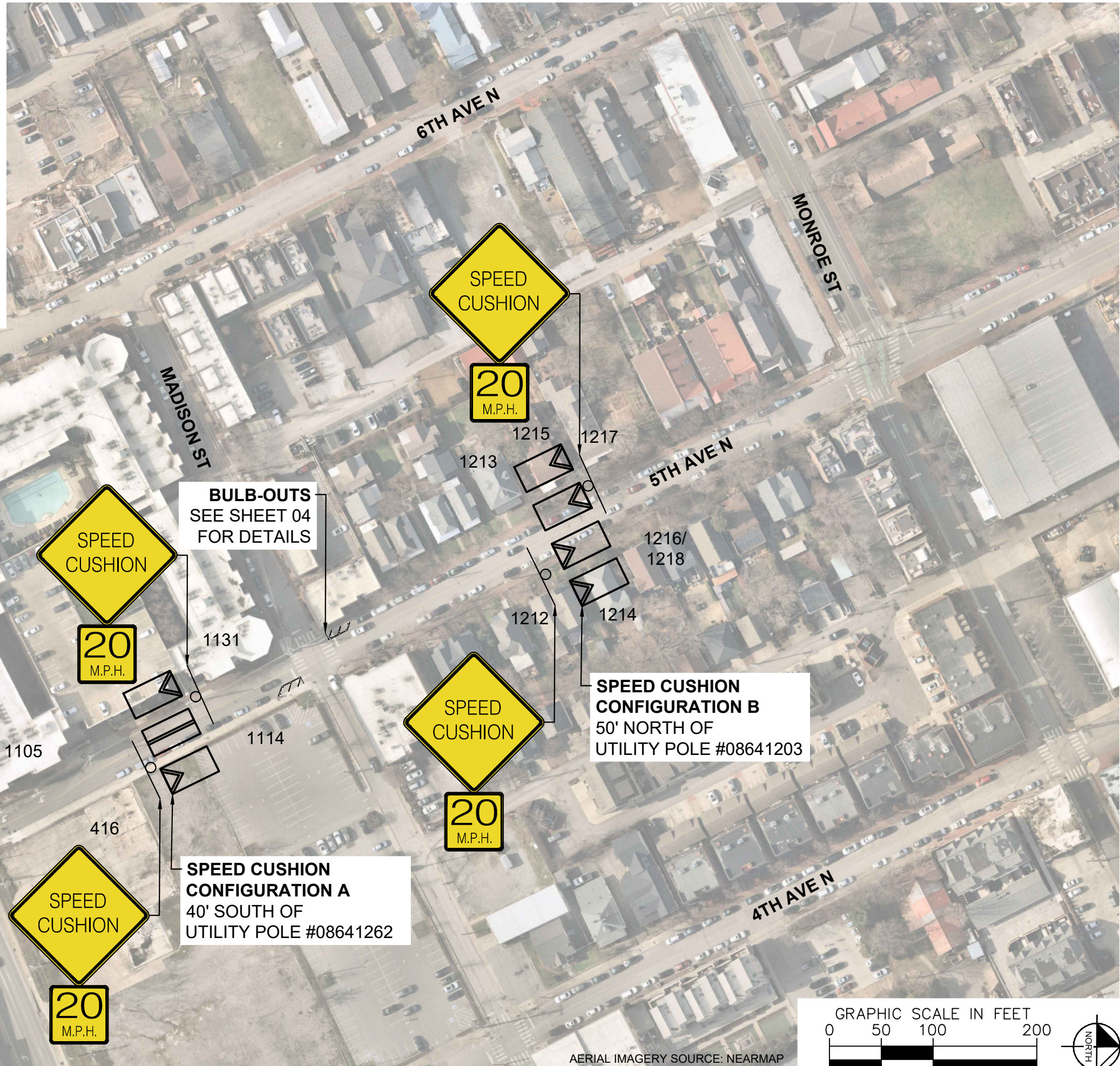


DESIGNED BY:	ALB
DRAWN BY:	TWR
CHECKED BY:	NDOT
DATE:	1/31/2024
KIMLEY-HORN PROJECT NO.:	118900046

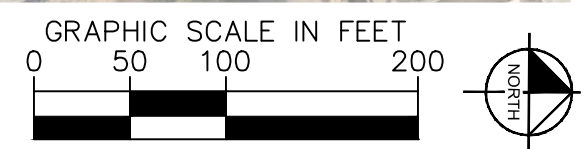
KEY
SHEET NUMBER
01

This document, together with the concepts and designs presented herein, is intended only for the specific purpose and client for which it was prepared. Reuse of and improper reliance on this document without written authorization and adaptation by Kimley-Horn and Associates, Inc. shall be without liability to Kimley-Horn and Associates, Inc.

SPEED CUSHIONS



AERIAL IMAGERY SOURCE: NEARMAP



DESIGNED BY:	ALB
DRAWN BY:	TWR
CHECKED BY:	NDOT
DATE:	1/31/2024
KIMLEY-HORN PROJECT NO.:	118900046

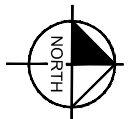
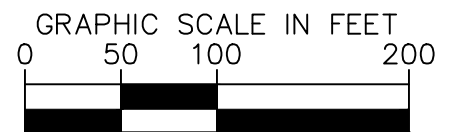
SPEED CUSHIONS



DESIGNED BY: ALB
 DRAWN BY: TWR
 CHECKED BY: NDOT
 DATE: 1/31/2024
 KIMLEY-HORN PROJECT NO. 118900046

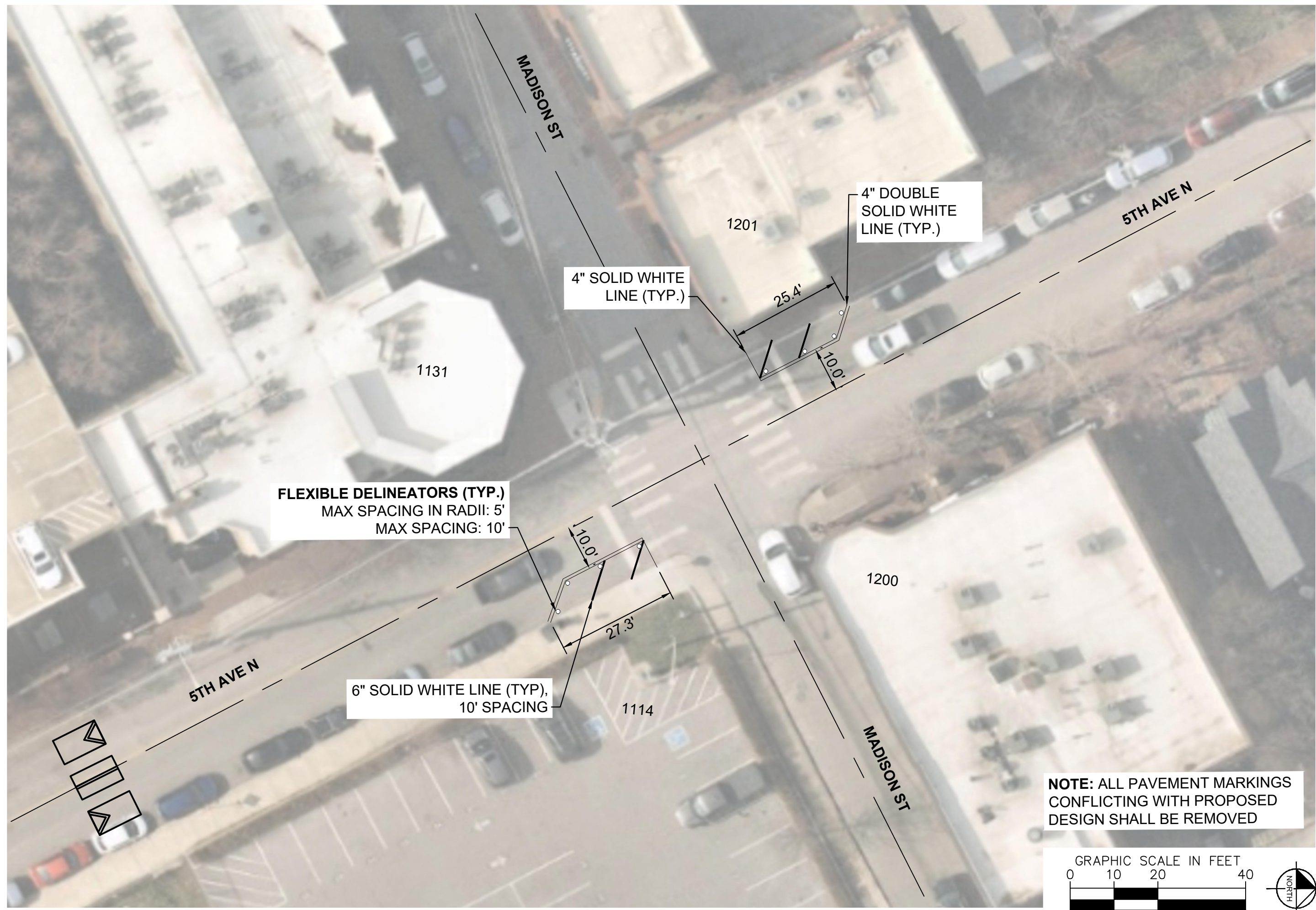
CONCEPT

SHEET NUMBER
03



AERIAL IMAGERY SOURCE: NEARMAP

This document, together with the concepts and designs presented herein, is intended only for the specific purpose and client for which it was prepared. Reuse of and improper reliance on this document without written authorization and adaptation by Kimley-Horn and Associates, Inc. shall be without liability to Kimley-Horn and Associates, Inc.



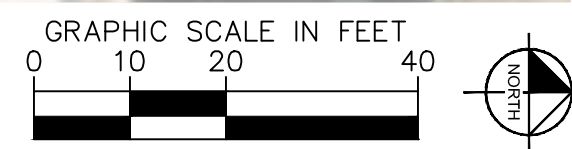
FLEXIBLE DELINEATORS (TYP.)
MAX SPACING IN RADII: 5'
MAX SPACING: 10'

4" SOLID WHITE LINE (TYP.)

4" DOUBLE SOLID WHITE LINE (TYP.)

6" SOLID WHITE LINE (TYP.),
10' SPACING

**NOTE: ALL PAVEMENT MARKINGS
CONFLICTING WITH PROPOSED
DESIGN SHALL BE REMOVED**



NDOT

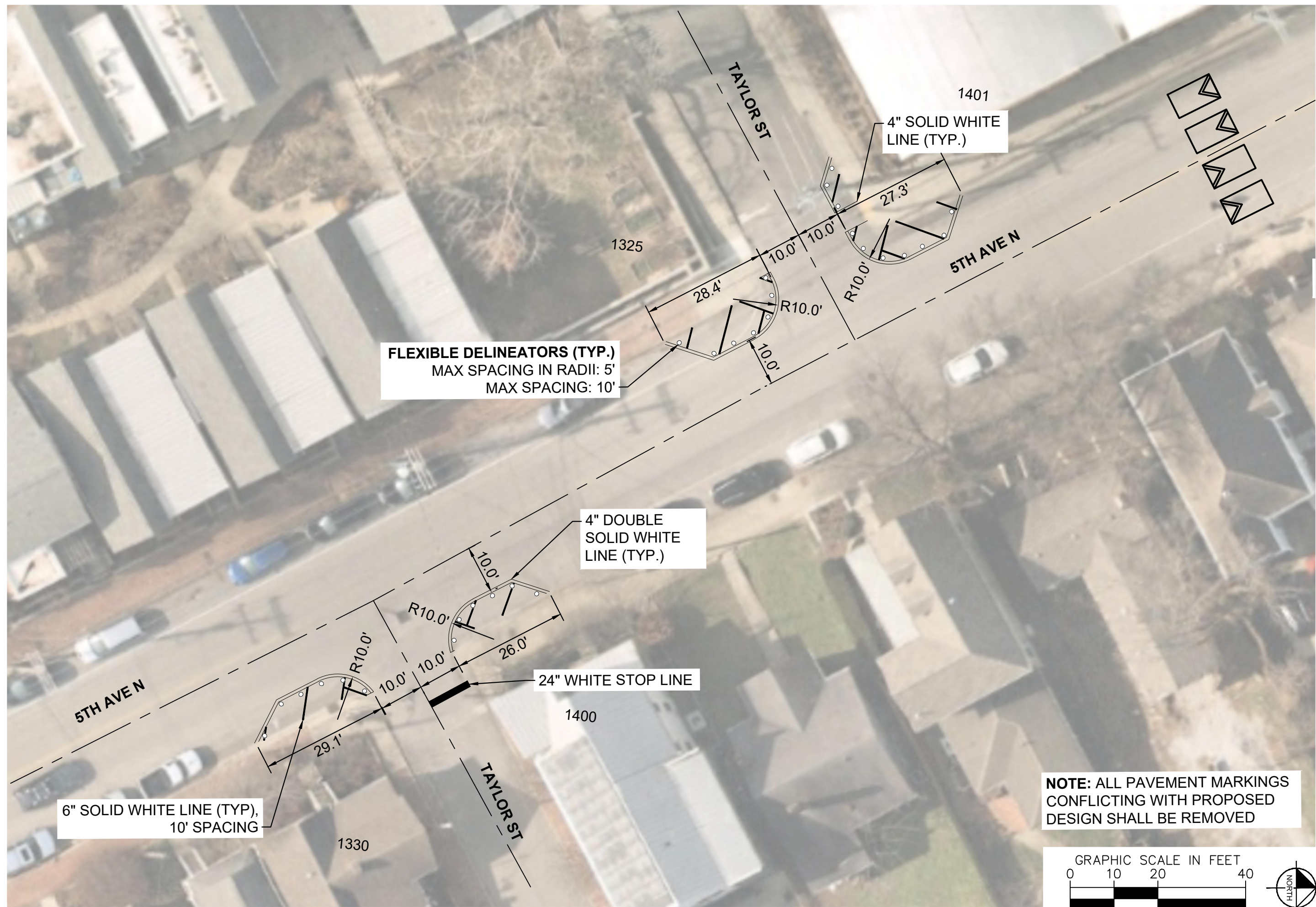
**5TH AVENUE N
TRAFFIC CALMING**
NASHVILLE, TN



DESIGNED BY: ALB
DRAWN BY: TWR
CHECKED BY: NDOT
DATE: 1/31/2024
KIMLEY-HORN PROJECT NO. 118900046

CONCEPT
SHEET NUMBER
04

This document, together with the concepts and designs presented herein, is intended only for the specific purpose and client for which it was prepared. Reuse of and improper reliance on this document without written authorization and adaptation by Kimley-Horn and Associates, Inc. shall be without liability to Kimley-Horn and Associates, Inc.



FLEXIBLE DELINEATORS (TYP.)
MAX SPACING IN RADII: 5'
MAX SPACING: 10'

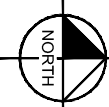
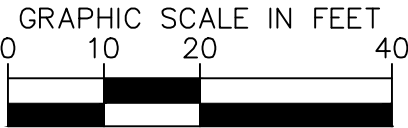
4" DOUBLE SOLID WHITE LINE (TYP.)

24" WHITE STOP LINE

6" SOLID WHITE LINE (TYP.), 10' SPACING

4" SOLID WHITE LINE (TYP.)

NOTE: ALL PAVEMENT MARKINGS CONFLICTING WITH PROPOSED DESIGN SHALL BE REMOVED



NDOT

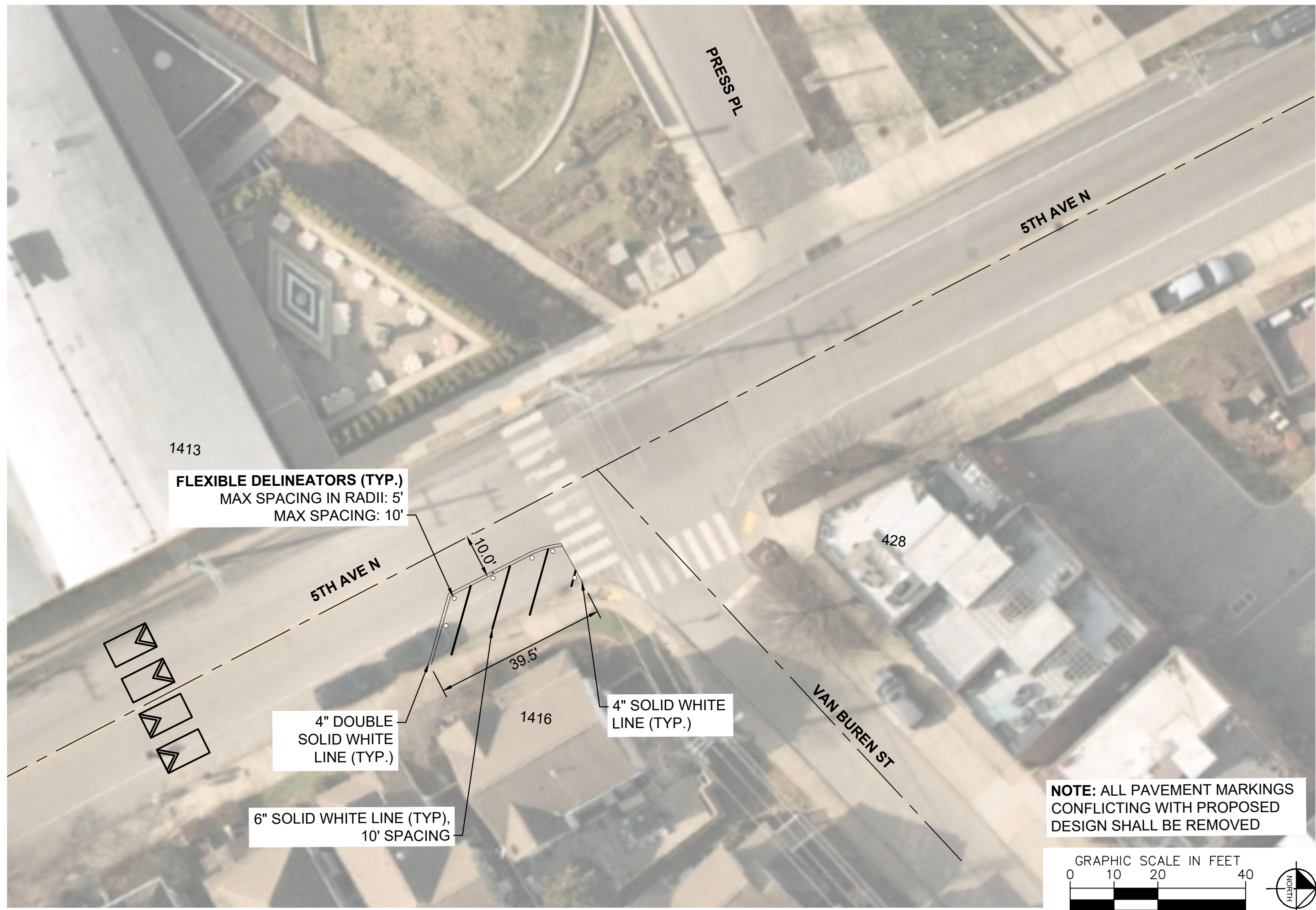
**5TH AVENUE N
TRAFFIC CALMING**
NASHVILLE, TN



DESIGNED BY: ALB
DRAWN BY: TWR
CHECKED BY: NDOT
DATE: 1/31/2024
KIMLEY-HORN PROJECT NO. 118900046

CONCEPT
SHEET NUMBER
05

This document, together with the concepts and designs presented herein, is intended only for the specific purpose and client for which it was prepared. Reuse of and improper reliance on this document without written authorization and adaptation by Kimley-Horn and Associates, Inc. shall be without liability to Kimley-Horn and Associates, Inc.



1413

FLEXIBLE DELINEATORS (TYP.)
MAX SPACING IN RADII: 5'
MAX SPACING: 10'

5TH AVE N

100.0'

39.5'

4" DOUBLE SOLID WHITE LINE (TYP.)

1416

4" SOLID WHITE LINE (TYP.)

6" SOLID WHITE LINE (TYP.), 10' SPACING

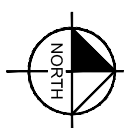
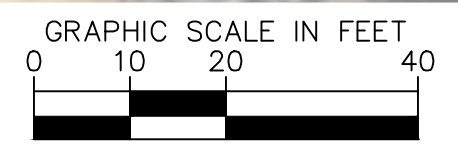
PRESS PL

5TH AVE N

428

VAN BUREN ST

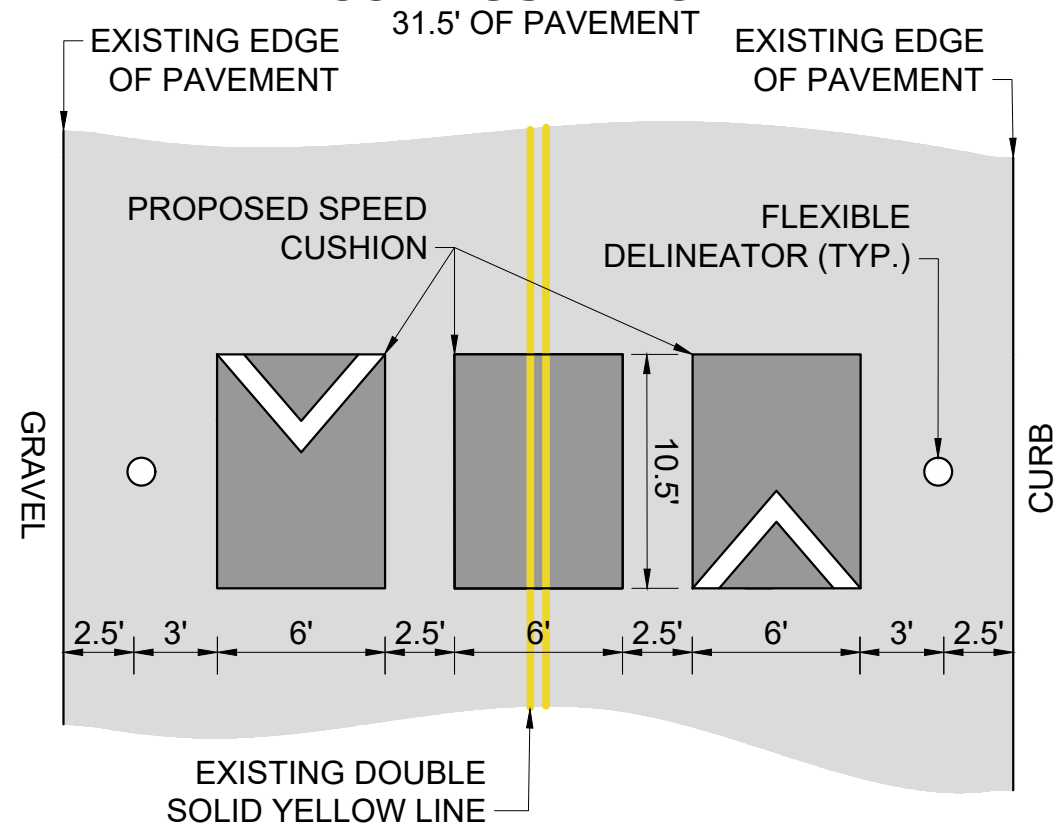
NOTE: ALL PAVEMENT MARKINGS CONFLICTING WITH PROPOSED DESIGN SHALL BE REMOVED



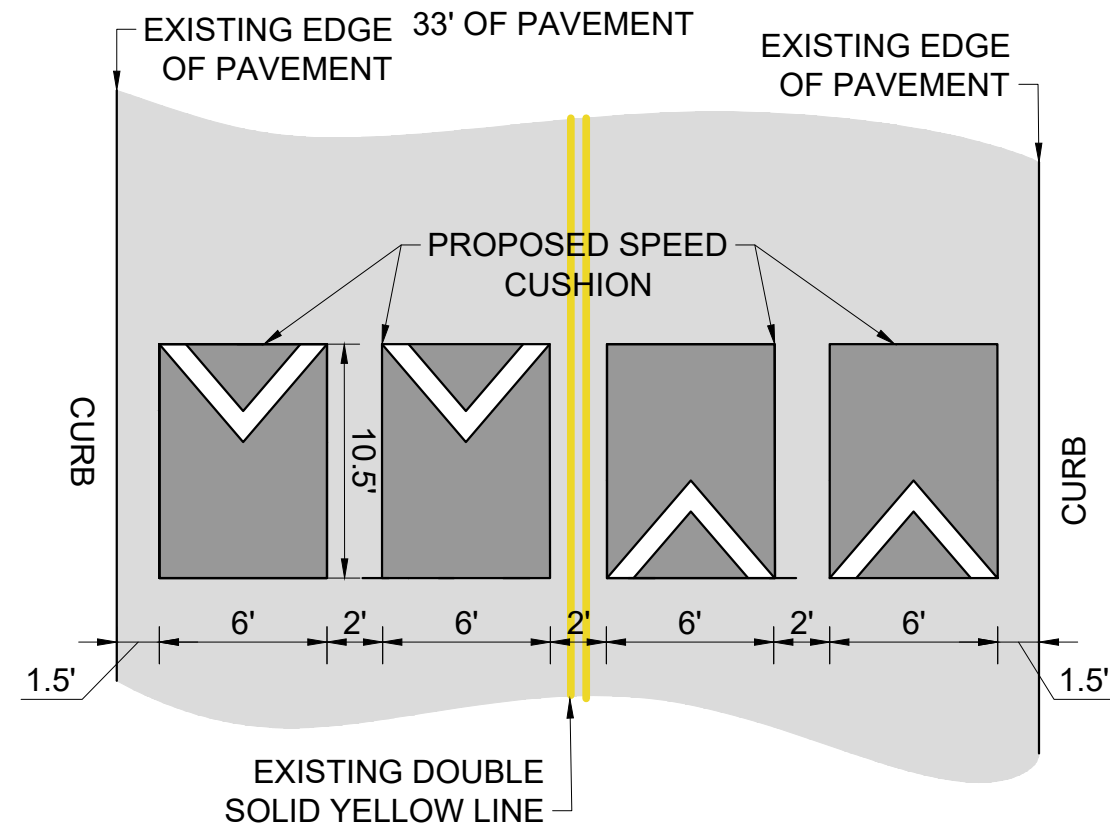
DESIGNED BY:	ALB
DRAWN BY:	TWR
CHECKED BY:	NDOT
DATE:	1/31/2024
KIMLEY-HORN PROJECT NO.:	118900046

This document, together with the concepts and designs presented herein, is intended only for the specific purpose and client for which it was prepared. Reuse of and improper reliance on this document without written authorization and adaptation by Kimley-Horn and Associates, Inc. shall be without liability to Kimley-Horn and Associates, Inc.

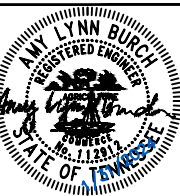
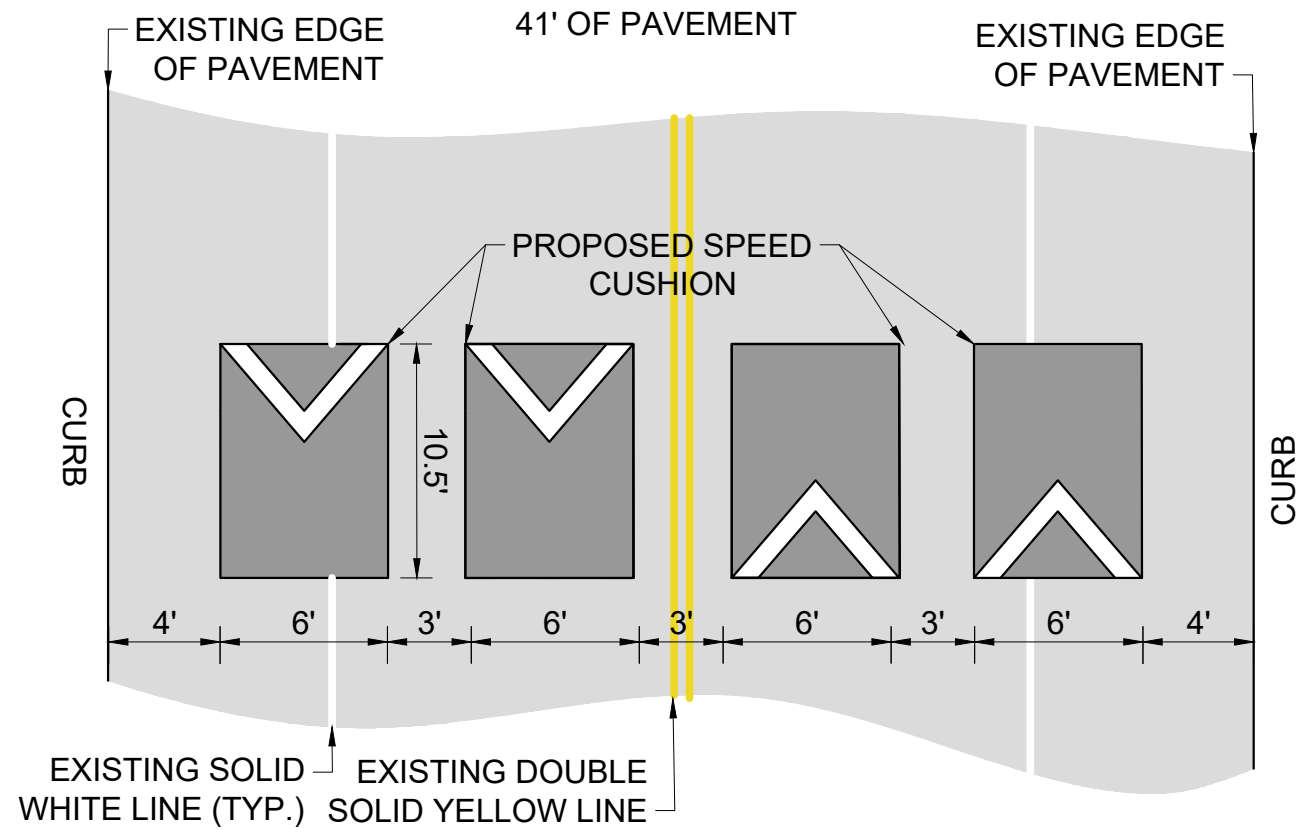
CONFIGURATION A



CONFIGURATION B



CONFIGURATION C



DESIGNED BY:	ALB
DRAWN BY:	TWR
CHECKED BY:	NDOT
DATE:	1/31/2024
KIMLEY-HORN PROJECT NO.:	118900046

DETAIL

SHEET NUMBER
07