

ESTIMATED QUANTITIES

SPEED CUSHIONS

6' X 10.5' SPEED CUSHION WITH ONE ARROW	14
6' X 10.5' SPEED CUSHION WITH DSYL	1

SIGNING




W17-1 (VAR.) "SPEED CUSHION" SIGN (30" X 30")	10
W17-1 (VAR.) "SPEED CUSHIONS AHEAD" SIGN (30" X 30")	2
W13-1P "20 M.P.H" SIGN (18" X 18")	12

PAVEMENT MARKINGS AND DELINEATORS

4" WHITE FLEXIBLE DELINEATOR	1
6" SINGLE SOLID YELLOW LINE (LF)	90
REFLECTIVE RUBBERIZED CURB PRODUCT (LF)	35

NOTE: ALL LOCATIONS ARE REFERENCED FROM CENTERLINE OF DRIVEWAYS OR OTHER LANDMARKS TO THE CENTER OF SPEED CUSHIONS OR SIGNS.

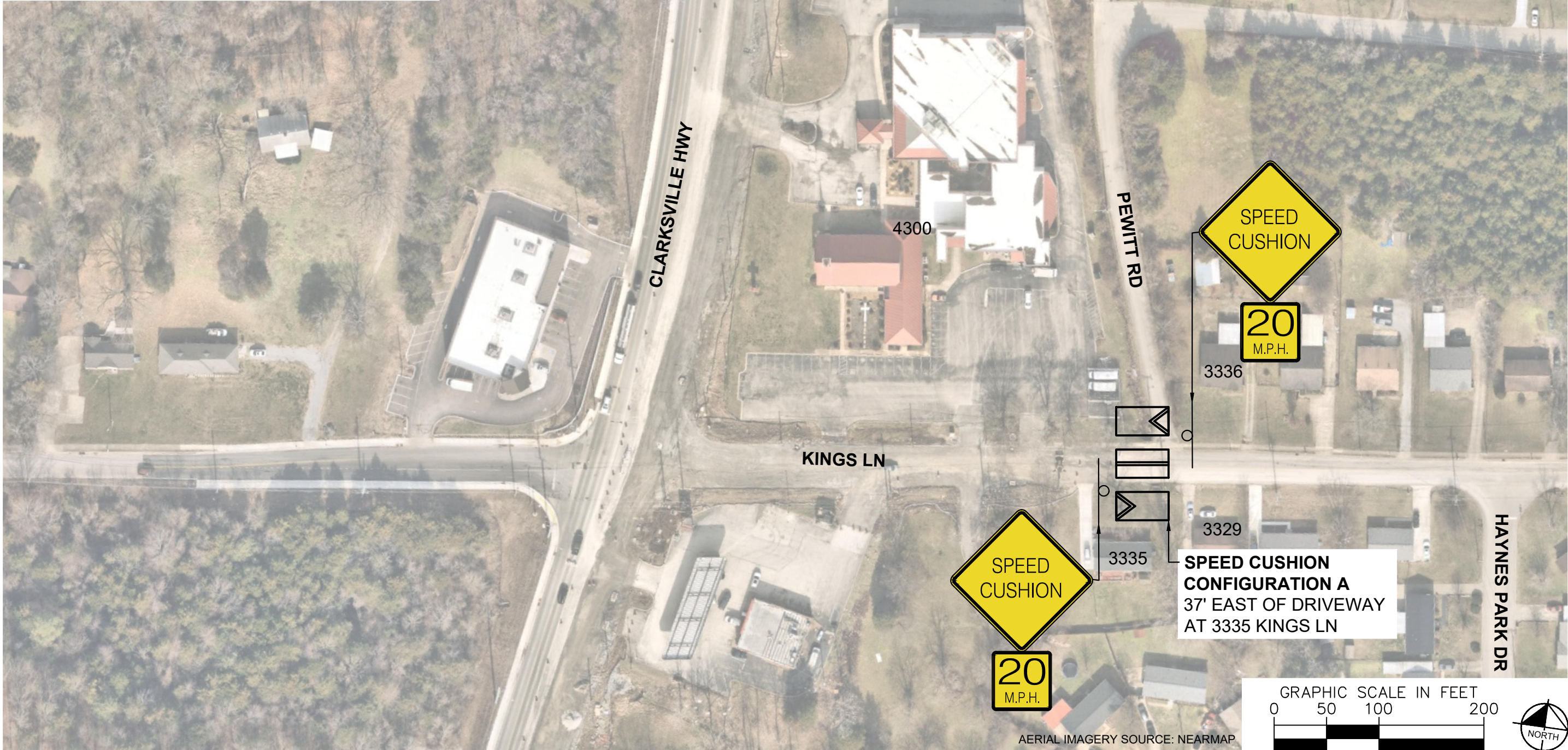
LEGEND

-  LIMITS OF TRAFFIC CALMING PROJECT
-  SPEED CUSHIONS
-  BULB-OUTS

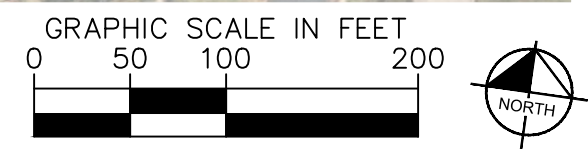


This document, together with the concepts and designs presented herein, is intended only for the specific purpose and client for which it was prepared. Reuse of and improper reliance on this document without written authorization and adaptation by Kimley-Horn and Associates, Inc. shall be without liability to Kimley-Horn and Associates, Inc.

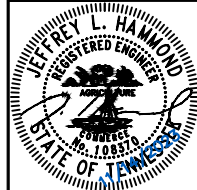
SPEED CUSHIONS



AERIAL IMAGERY SOURCE: NEARMAP



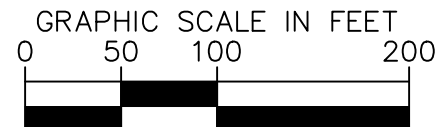
**KINGS LANE
TRAFFIC CALMING**
NASHVILLE, TN



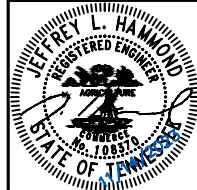
DESIGNED BY:	JLH
DRAWN BY:	TWR
CHECKED BY:	NDOT
DATE:	11/14/2023
KIMLEY-HORN PROJECT NO.	118900036

CONCEPT
SHEET NUMBER
02

SPEED CUSHIONS

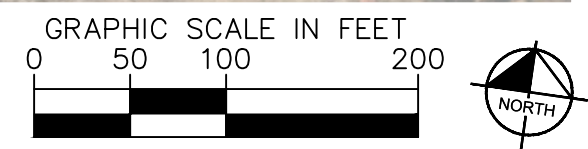
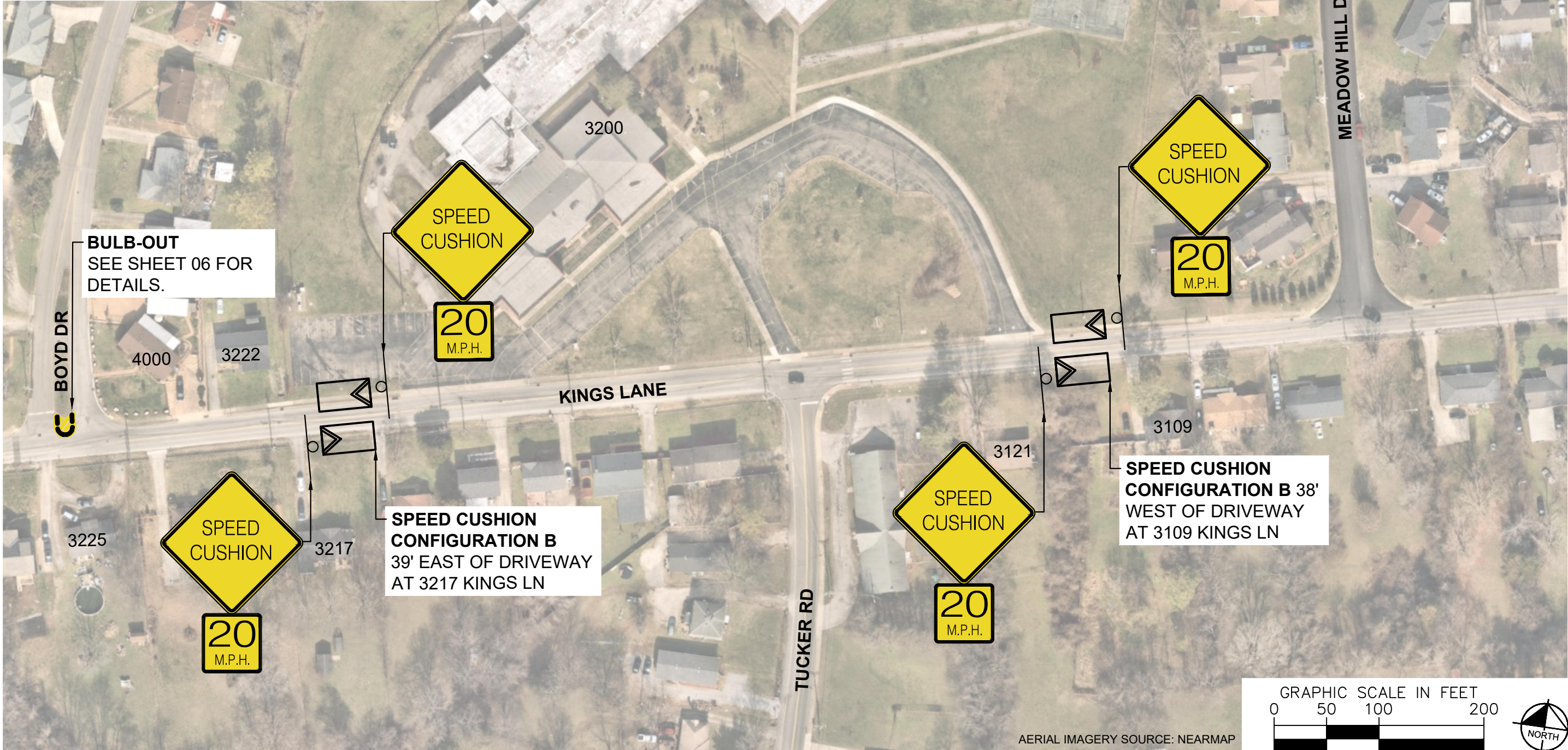
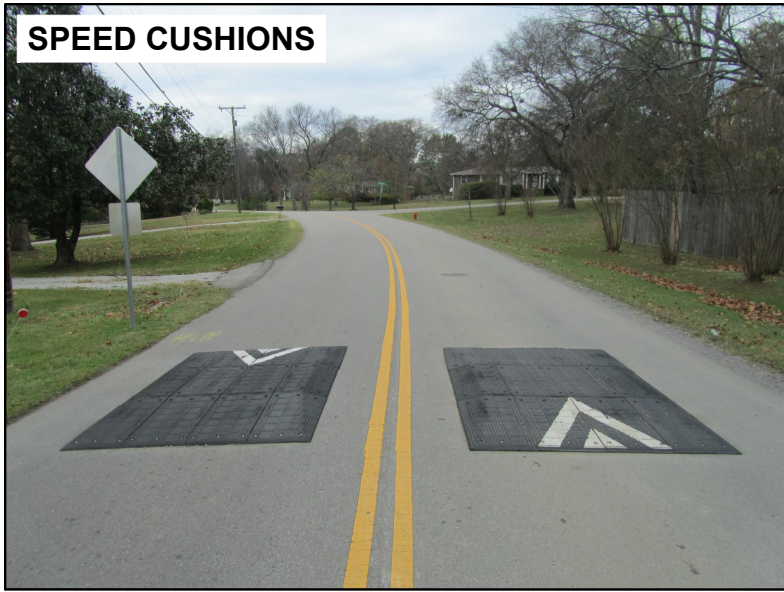


AERIAL IMAGERY SOURCE: NEARMAP

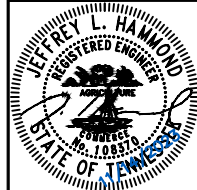


DESIGNED BY:	JLH
DRAWN BY:	TWR
CHECKED BY:	NDOT
DATE:	11/14/2023
KIMLEY-HORN PROJECT NO. 11880036	

SPEED CUSHIONS



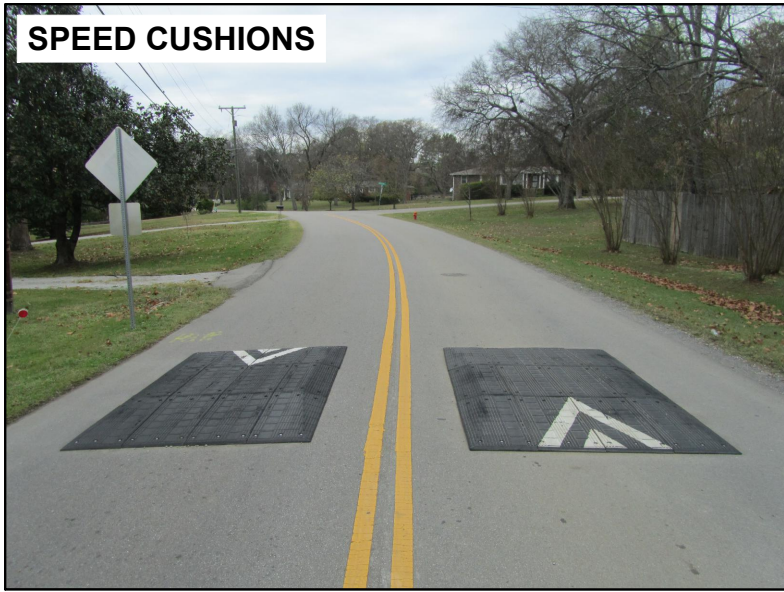
AERIAL IMAGERY SOURCE: NEARMAP



DESIGNED BY:	JLH
DRAWN BY:	TWR
CHECKED BY:	NDOT
DATE:	11/14/2023
KIMLEY-HORN PROJECT NO.	11890036

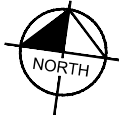
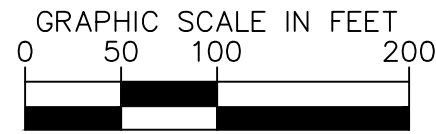
Drawing name: K:\NSH_TPTO\11890036 - traffic calming\3 - design - december 2022 cycle\15 - kings lane\Design\CAD\plansheets\Kings Lane-TrafficCalming.dwg 04-CONCEPT Nov 14, 2023 5:06pm by: Tyler Rowland

SPEED CUSHIONS



SPEED CUSHION CONFIGURATION B
39' EAST OF DRIVEWAY
AT 3033 KINGS LN

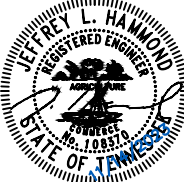
SPEED CUSHION CONFIGURATION B
67' EAST OF DRIVEWAY
AT 3009 KINGS LN



AERIAL IMAGERY SOURCE: NEARMAP



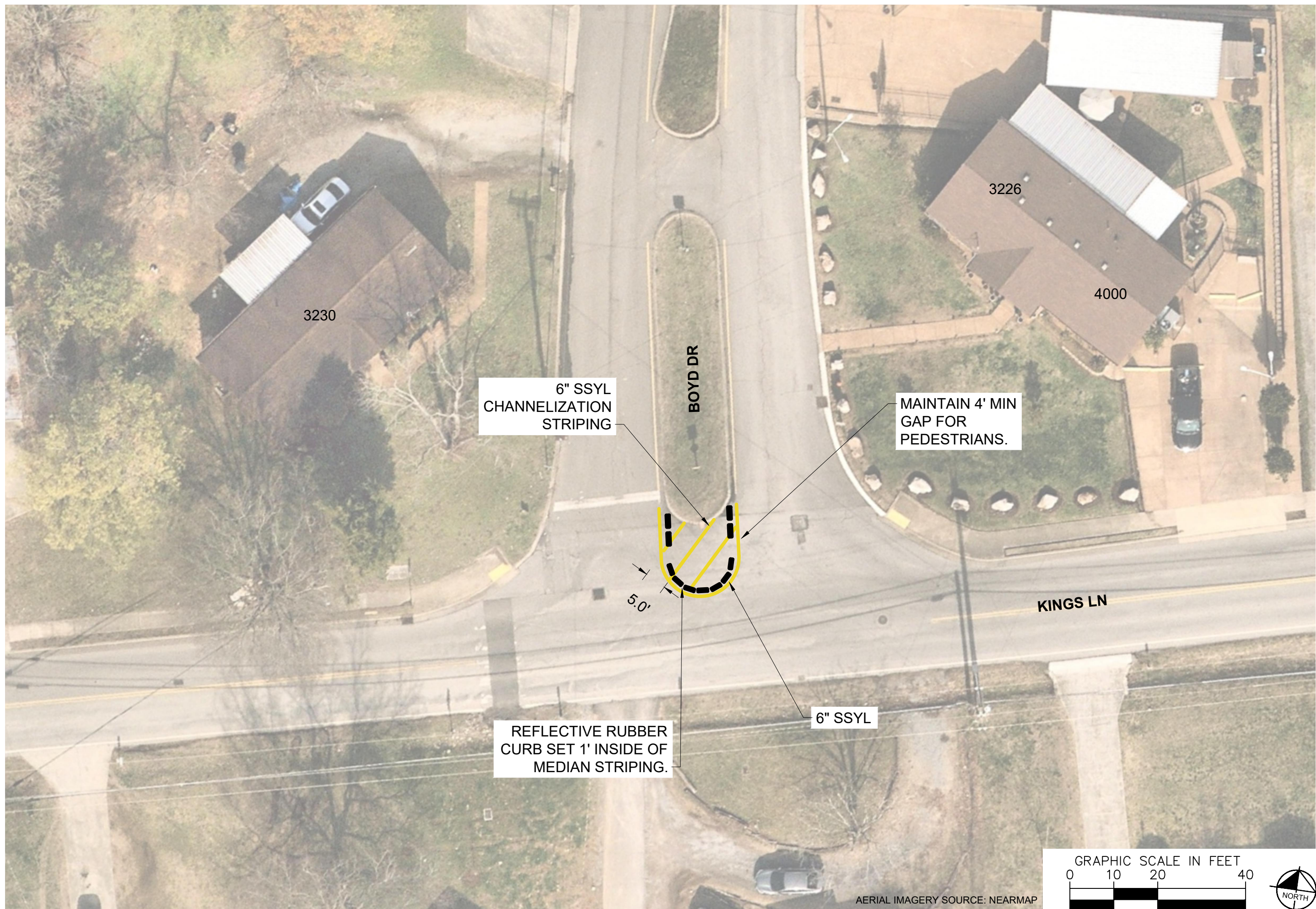
**KINGS LANE
TRAFFIC CALMING**
NASHVILLE, TN



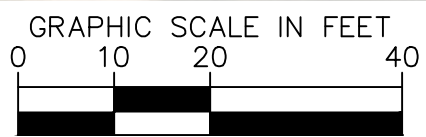
DESIGNED BY:	JLH
DRAWN BY:	TWR
CHECKED BY:	NDOT
DATE:	11/14/2023
KIMLEY-HORN PROJECT NO. 118900036	

CONCEPT
SHEET NUMBER
05

This document, together with the concepts and designs presented herein, is intended only for the specific purpose and client for which it was prepared. Reuse of and improper reliance on this document without written authorization and adaptation by Kimley-Horn and Associates, Inc. shall be without liability to Kimley-Horn and Associates, Inc.



DESIGNED BY:	JLH
DRAWN BY:	TWR
CHECKED BY:	NDOT
DATE:	11/14/2023
KIMLEY-HORN PROJECT NO.:	11890036

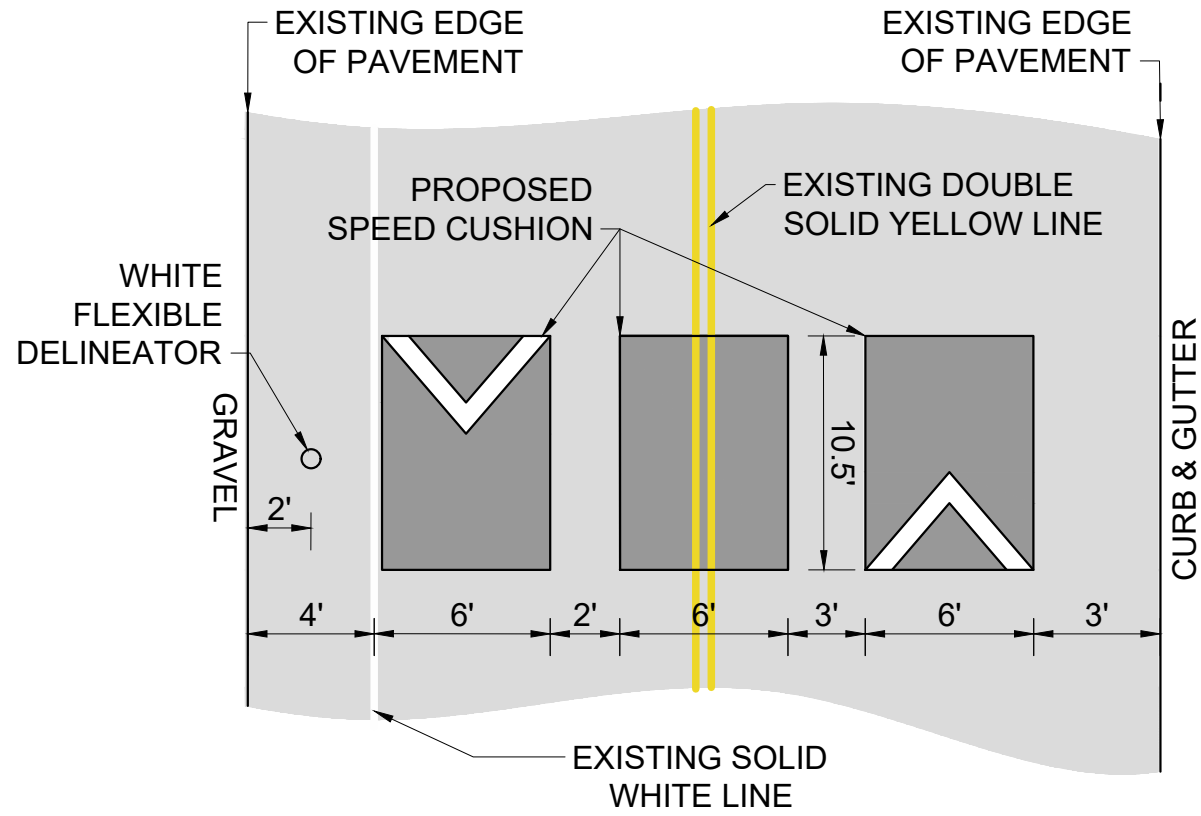


AERIAL IMAGERY SOURCE: NEARMAP

This document, together with the concepts and designs presented herein, as an instrument of service, is intended only for the specific purpose and client for which it was prepared. Reuse of and improper reliance on this document without written authorization and adaptation by Kimley-Horn and Associates, Inc. shall be without liability to Kimley-Horn and Associates, Inc.

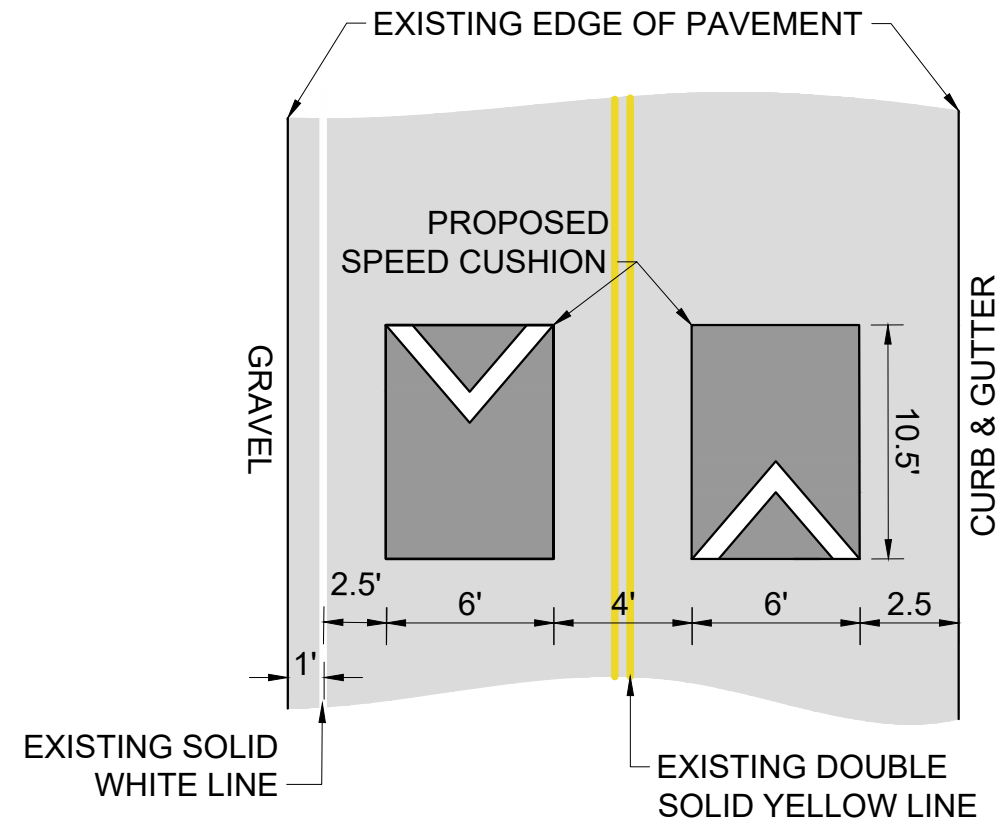
CONFIGURATION A

30' OF PAVEMENT

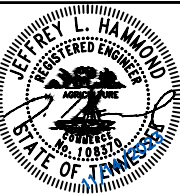


CONFIGURATION B

22' OF PAVEMENT



KINGS LANE
TRAFFIC CALMING
NASHVILLE, TN



DESIGNED BY: JLH
DRAWN BY: TWR
CHECKED BY: NDOT
DATE: 11/14/2023
KIMLEY-HORN PROJECT NO. 118800036

DETAIL

SHEET NUMBER
07