

ESTIMATED QUANTITIES

SPEED CUSHIONS




6' X 14' SPEED CUSHION WITH ONE ARROW	16
6' X 14' SPEED CUSHION WITH DSYL	4

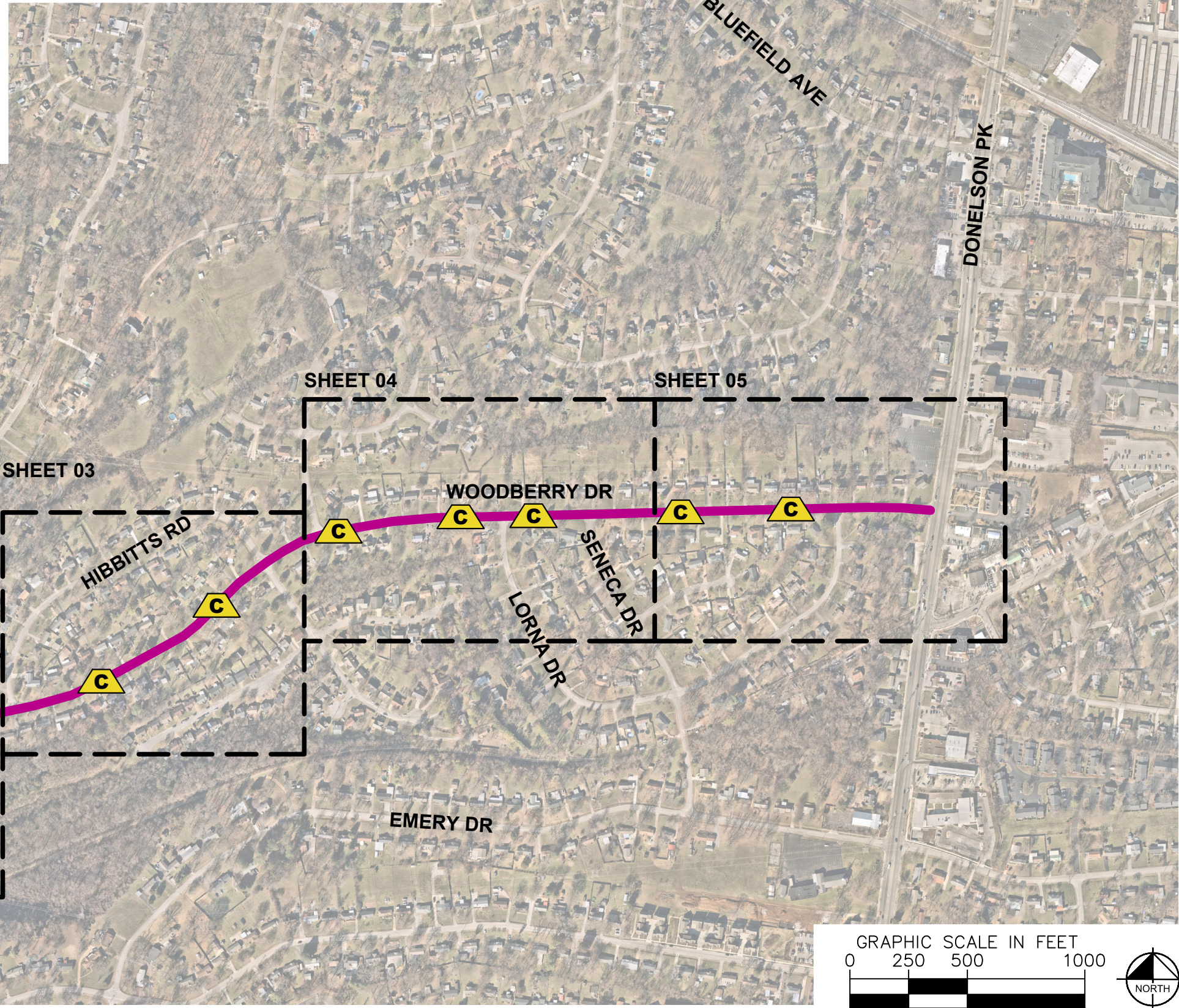
SIGNING

W17-1 (VAR.) "SPEED CUSHION" SIGN (30" X 30")	16
W13-1P "20 M.P.H" SIGN (18" X 18")	16
RADAR FEEDBACK SIGN	1

NOTE: ALL LOCATIONS ARE REFERENCED FROM CENTERLINE OF DRIVEWAYS OR OTHER LANDMARKS TO THE CENTER OF SPEED CUSHIONS OR SIGNS.

LEGEND

-  LIMITS OF TRAFFIC CALMING PROJECT
-  SPEED CUSHIONS
-  RADAR FEEDBACK SIGN



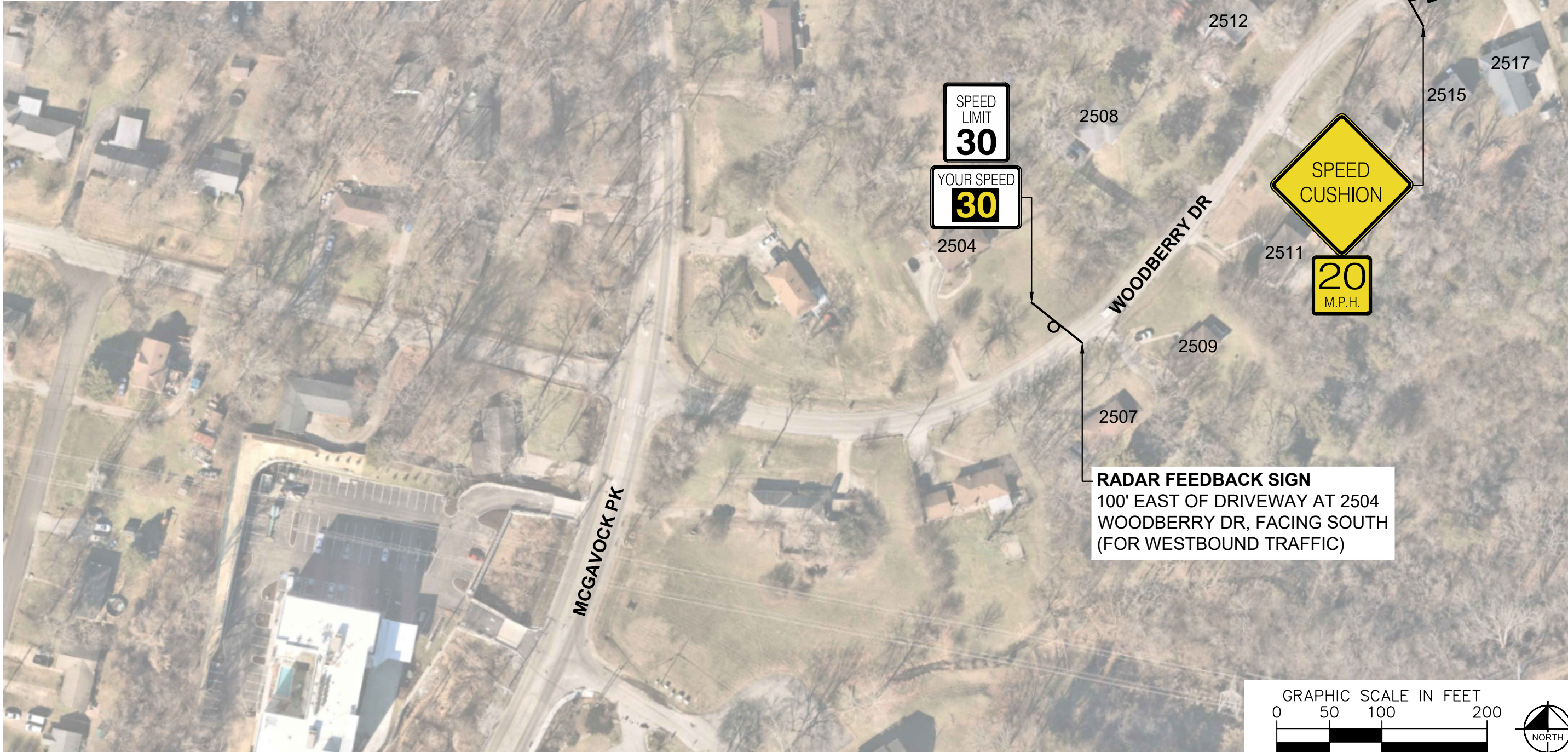
DESIGNED BY:	DHT
DRAWN BY:	DKW
CHECKED BY:	NDOT
DATE:	1/31/2024
KIMLEY-HORN PROJECT NO.	118900046

KEY

SHEET NUMBER
01

This document, together with the concepts and designs presented herein, is intended only for the specific purpose and client for which it was prepared. Reuse of and improper reliance on this document without written authorization and adaptation by Kimley-Horn and Associates, Inc. shall be without liability to Kimley-Horn and Associates, Inc.

SPEED CUSHIONS



NDOT

**WOODBERRY DRIVE
TRAFFIC CALMING**
NASHVILLE, TN

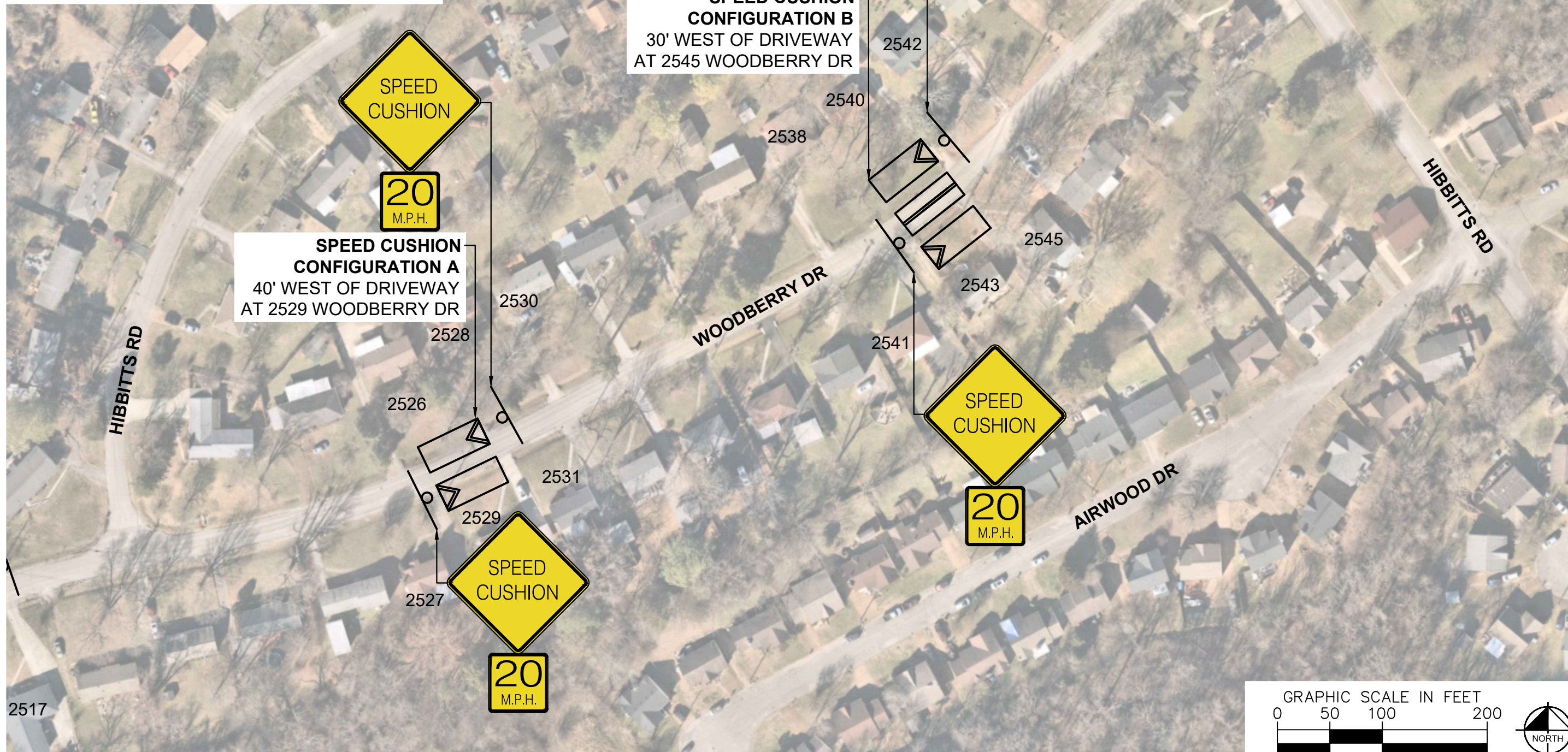


Kimley»Horn

DESIGNED BY:	DHT
DRAWN BY:	DKW
CHECKED BY:	NDOT
DATE:	1/31/2024
KIMLEY-HORN PROJECT NO. 11890046	

CONCEPT
SHEET NUMBER
02

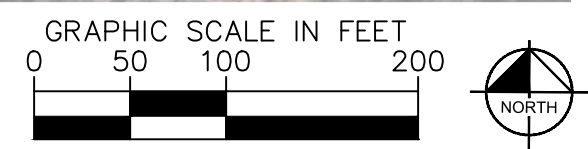
SPEED CUSHIONS



**WOODBERRY DRIVE
TRAFFIC CALMING**
NASHVILLE, TN

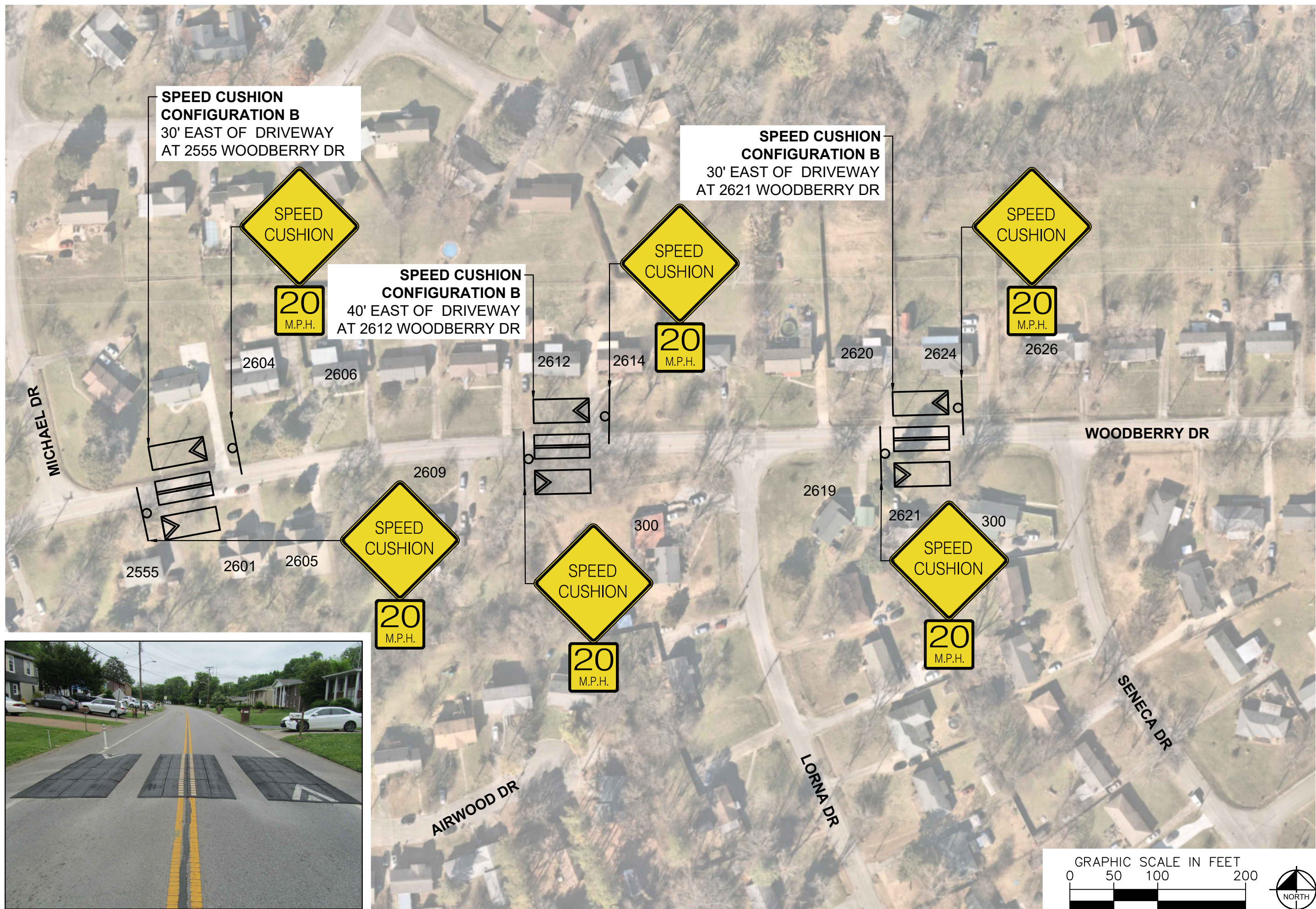


DESIGNED BY:	DHT
DRAWN BY:	DKW
CHECKED BY:	NDOT
DATE:	1/31/2024
KIMLEY-HORN PROJECT NO. 118900046	



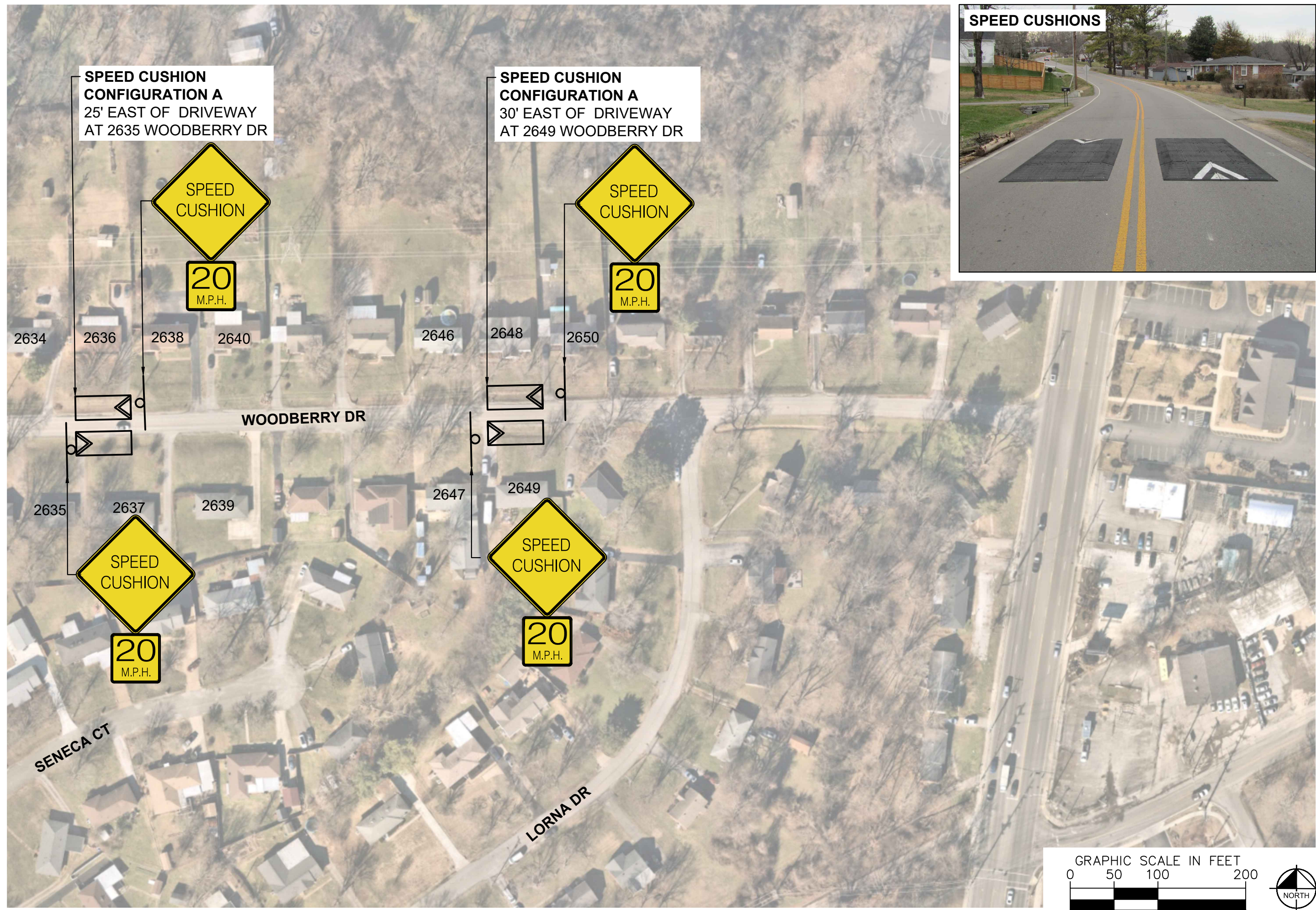
CONCEPT
SHEET NUMBER
03

This document, together with the concepts and designs presented herein, is intended only for the specific purpose and client for which it was prepared. Reuse of and improper reliance on this document without written authorization and adaptation by Kimley-Horn and Associates, Inc. shall be without liability to Kimley-Horn and Associates, Inc.



DESIGNED BY:	DHT
DRAWN BY:	DKW
CHECKED BY:	NDOT
DATE:	1/31/2024
KIMLEY-HORN PROJECT NO. 118900046	

This document, together with the concepts and designs presented herein, is intended only for the specific purpose and client for which it was prepared. Reuse of and improper reliance on this document without written authorization and adaptation by Kimley-Horn and Associates, Inc. shall be without liability to Kimley-Horn and Associates, Inc.



NDOT

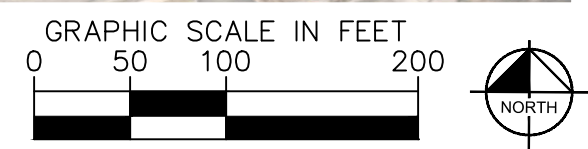
**WOODBERRY DRIVE
TRAFFIC CALMING**
NASHVILLE, TN



Kimley»Horn

DESIGNED BY: DHT
DRAWN BY: DKW
CHECKED BY: NDOT
DATE: 1/31/2024
KIMLEY-HORN PROJECT NO. 118900046

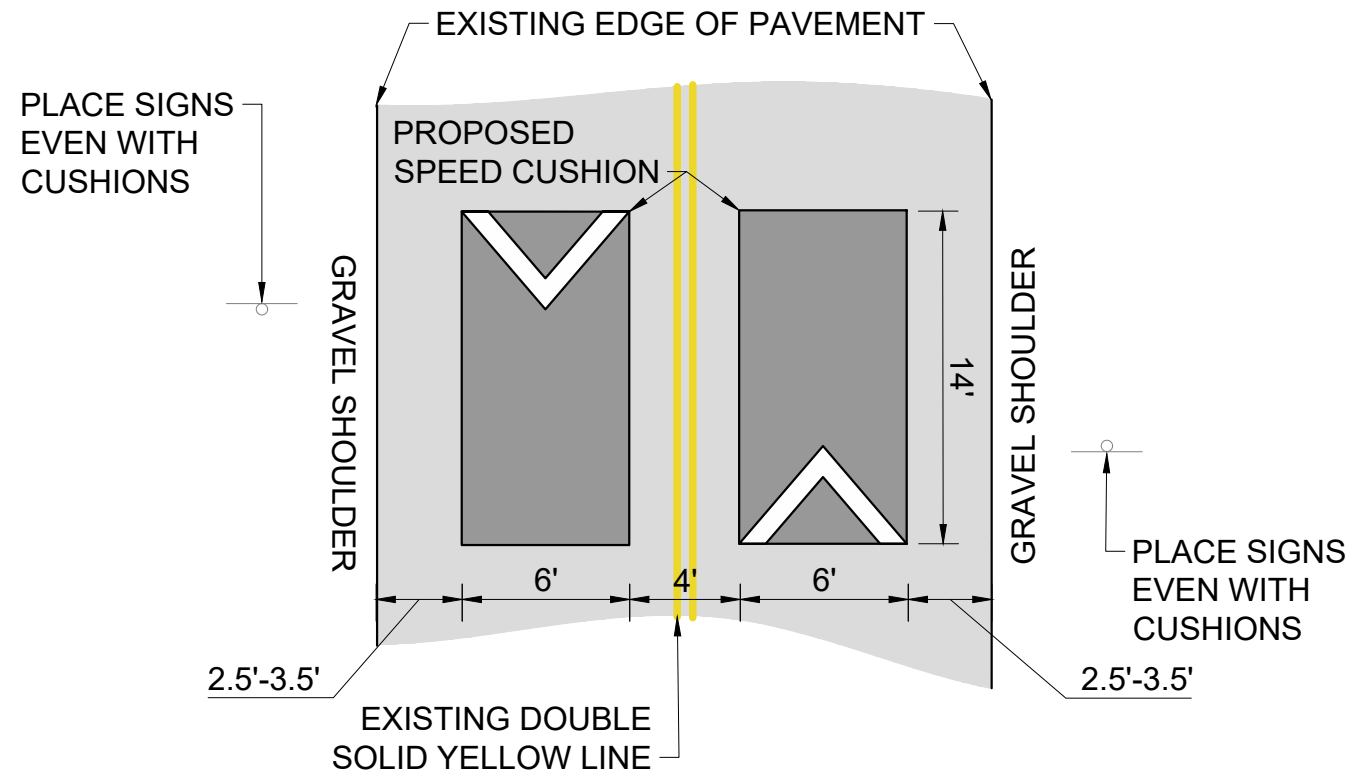
CONCEPT
SHEET NUMBER
05



This document, together with the concepts and designs presented herein, as an instrument of service, is intended only for the specific purpose and client for which it was prepared. Reuse of and improper reliance on this document without written authorization and adaptation by Kimley-Horn and Associates, Inc. shall be without liability to Kimley-Horn and Associates, Inc.

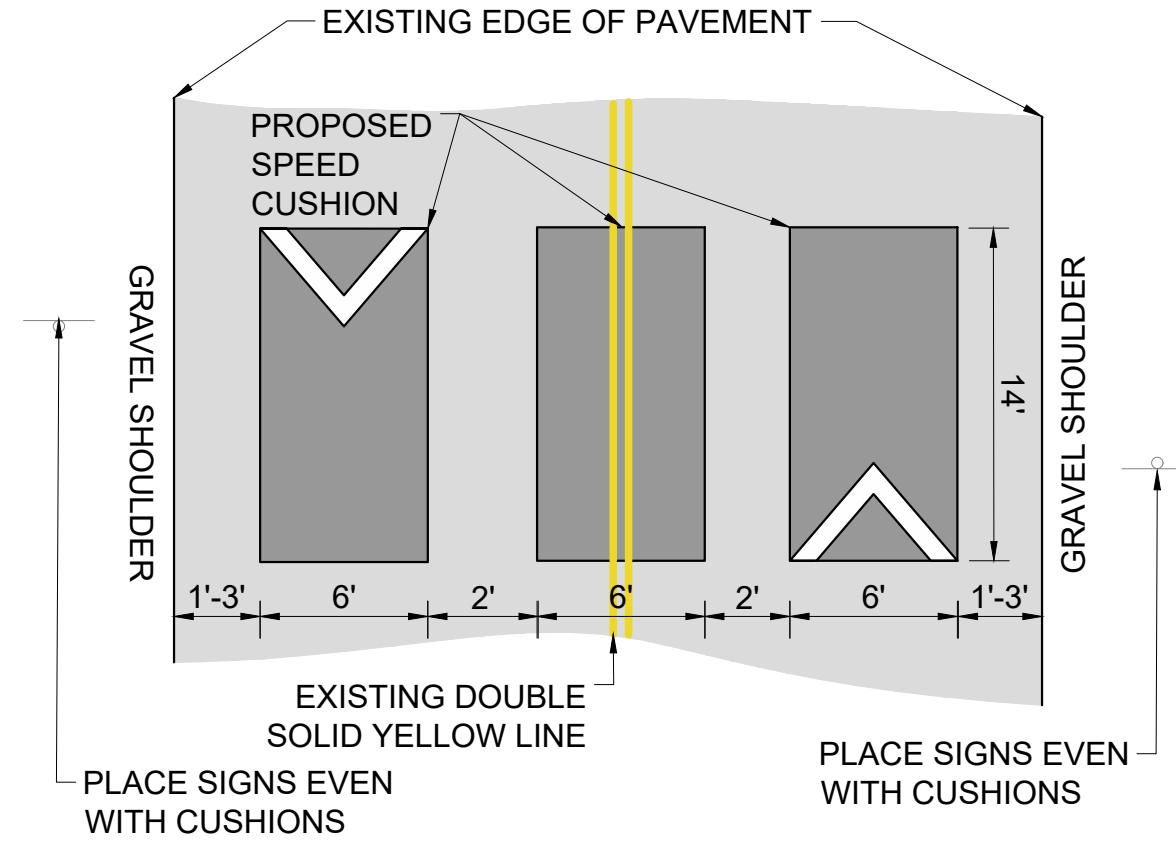
CONFIGURATION A

21'-23' OF PAVEMENT



CONFIGURATION B

24' - 28' OF PAVEMENT



WOODBERRY DRIVE
TRAFFIC CALMING
NASHVILLE, TN



DESIGNED BY:	DHT
DRAWN BY:	DKW
CHECKED BY:	NDOT
DATE:	1/31/2024
KIMLEY-HORN PROJECT NO.:	118800046

DETAIL

SHEET NUMBER
06