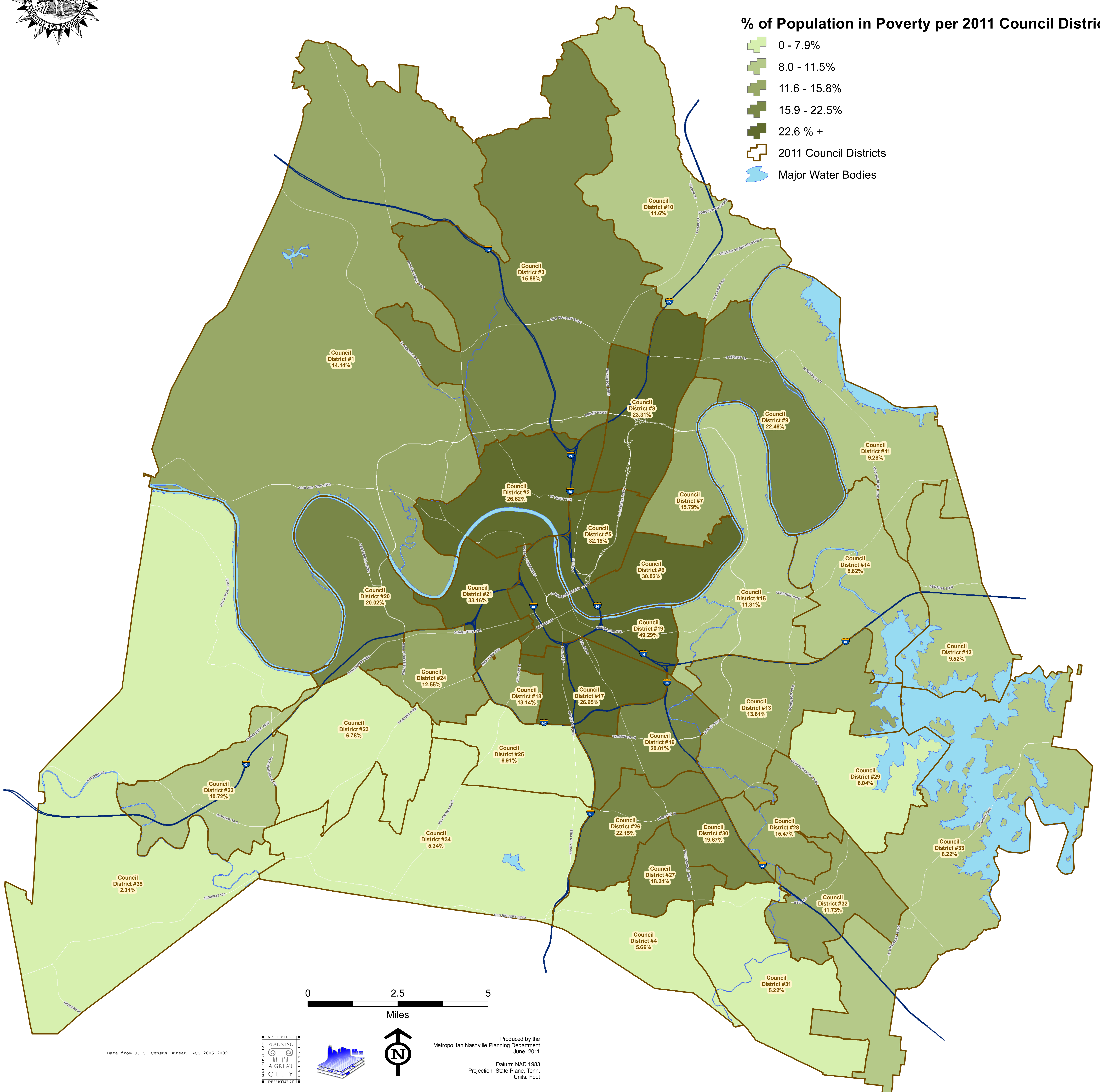




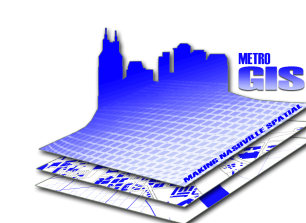
Metropolitan Nashville & Davidson County

% of Population in Poverty per 2011 Council Districts

- 0 - 7.9%
- 8.0 - 11.5%
- 11.6 - 15.8%
- 15.9 - 22.5%
- 22.6% +
- 2011 Council Districts
- Major Water Bodies



Data from U. S. Census Bureau, ACS 2005-2009



0 2.5 5
Miles

Produced by the
Metropolitan Nashville Planning Department
June, 2011
Datum: NAD 1983
Projection: State Plane, Tenn.
Units: Feet