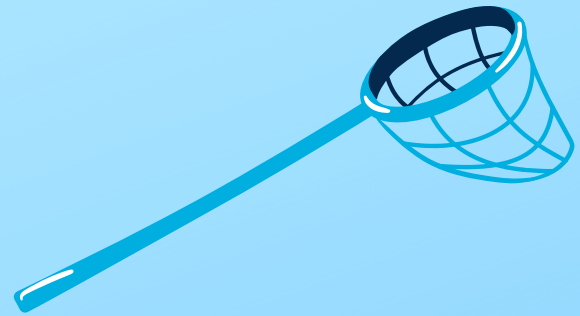


POND RULES

You can:

- Search for insects and animals
- Gently catch living things you find
- Ask a naturalist to help you identify what you discover



But Please:

- Do not go past the fence, stay on the path
- Do not use the net in the wetland area (shallow water at the back of the pond). Nets can harm the tadpoles and small frogs.
- Return everything (even pond mud, algae, dead leaves) back to the pond
- Clean nets completely – remove all dirt and debris

