

This document, together with the concepts and designs presented herein, is intended only for the specific purpose and client for which it was prepared. Reuse of and improper reliance on this document without written authorization and adaptation by Kimley-Horn and Associates, Inc. shall be without liability to Kimley-Horn and Associates, Inc.

LEGEND
 **SPEED CUSHION**



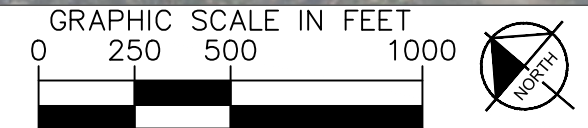
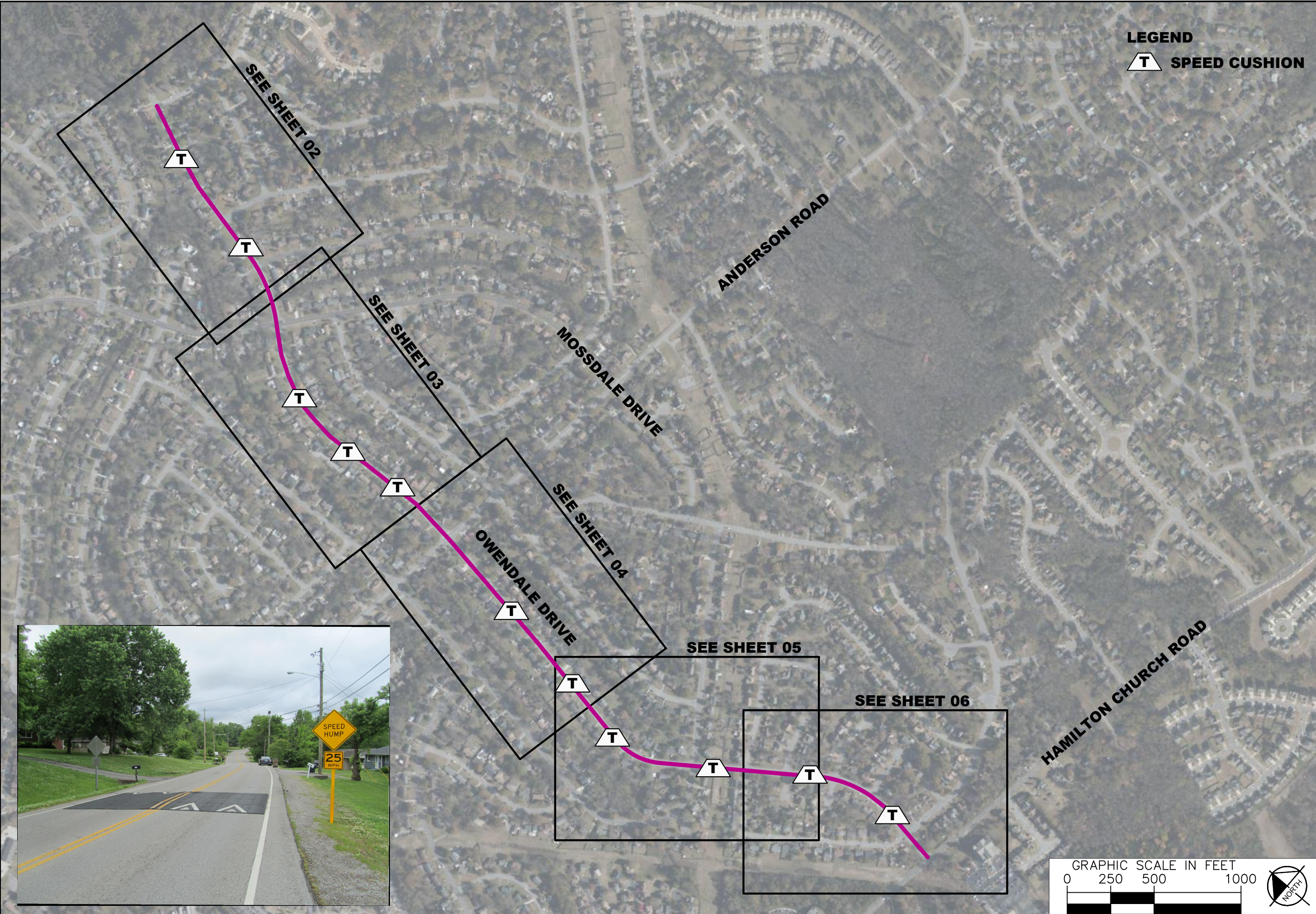
**OWENDALE
TRAFFIC CALMING
NASHVILLE, TN**

**DRAFT
PRELIMINARY
PLANS
FOR REVIEW ONLY**

| NO. | DATE | BY |
|-----|------|----|
| | | |
| | | |
| | | |
| | | |
| | | |
| | | |
| | | |
| | | |
| | | |
| | | |

| | |
|-------------------------|-----------|
| DESIGNED BY: | ALP |
| DRAWN BY: | EJW |
| CHECKED BY: | NDQT |
| DATE: | 6/21/2022 |
| KIMLEY-HORN PROJECT NO. | 11800005 |

CONCEPT PLAN
SHEET NUMBER
01



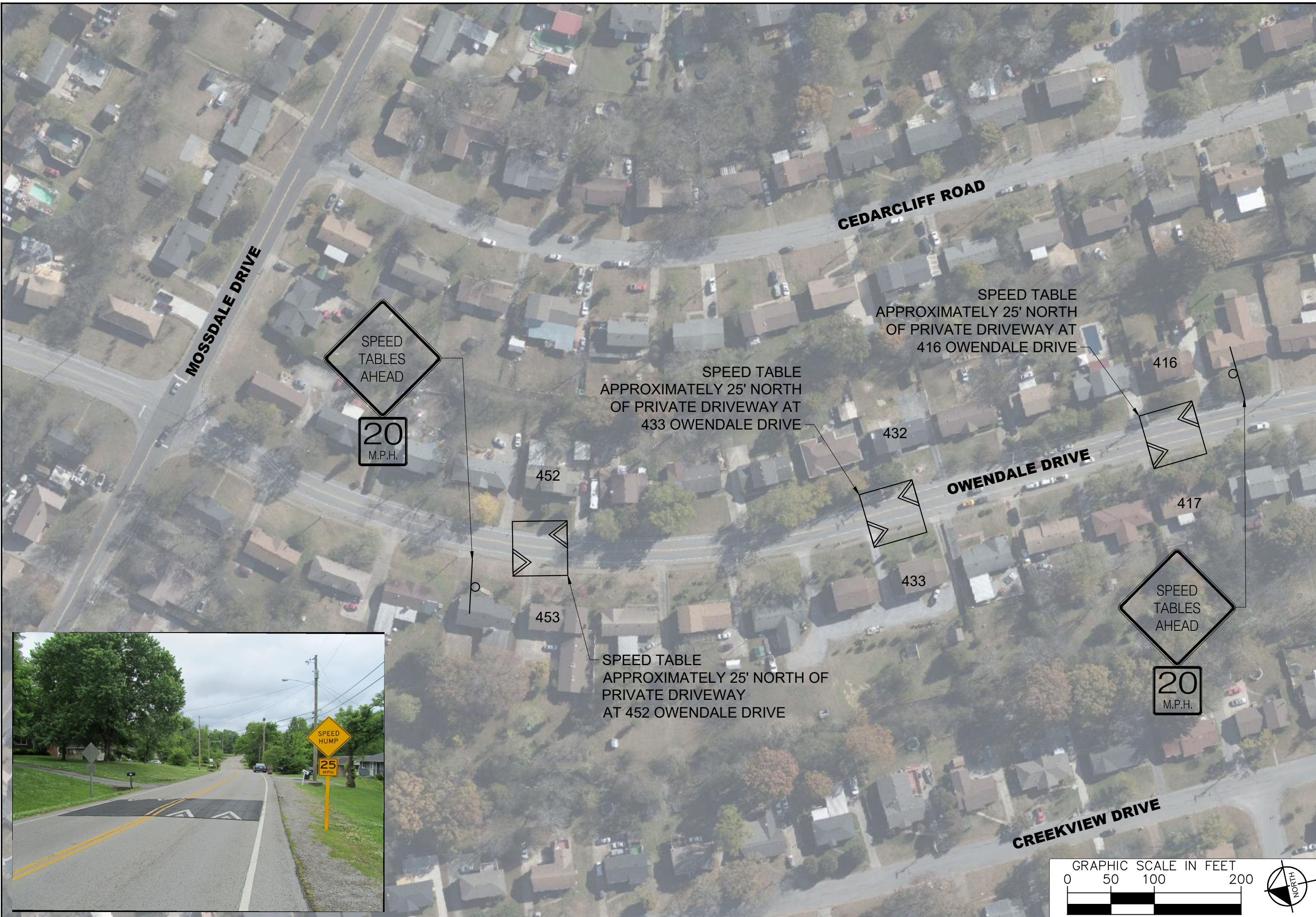
This document, together with the concepts and designs presented herein, is intended only for the specific purpose and client for which it was prepared. Reuse of and improper reliance on this document without written authorization and adaptation by Kimley-Horn and Associates, Inc. shall be without liability to Kimley-Horn and Associates, Inc.

| NO. | DATE | BY | REVISIONS |
|-----|------|----|-----------|
| 1 | | | |
| 2 | | | |
| 3 | | | |
| 4 | | | |
| 5 | | | |
| 6 | | | |
| 7 | | | |
| 8 | | | |
| 9 | | | |
| 10 | | | |

| | |
|----------------------------------|-----------|
| DESIGNED BY: | ALP |
| DRAWN BY: | EJW |
| CHECKED BY: | NDQT |
| DATE: | 8/21/2022 |
| KIMLEY-HORN PROJECT NO. 11800005 | |
| CONCEPT PLAN | |
| SHEET NUMBER | |
| 02 | |



This document, together with the concepts and designs presented herein, is intended only for the specific purpose and client for which it was prepared. Reuse of and improper reliance on this document without written authorization and adaptation by Kimley-Horn and Associates, Inc. shall be without liability to Kimley-Horn and Associates, Inc.



| NO. | BY | | DATE | REVISIONS |
|-----|----|---|------|-----------|
| | 1 | 2 | | |
| 1 | | | | |
| 2 | | | | |
| 3 | | | | |
| 4 | | | | |
| 5 | | | | |
| 6 | | | | |
| 7 | | | | |
| 8 | | | | |
| 9 | | | | |
| 10 | | | | |

DESIGNED BY: ALB
DRAWN BY: EJJ
CHECKED BY: NDOT
DATE: 6/21/2022
KIMLEY-HORN PROJECT NO. 11800005

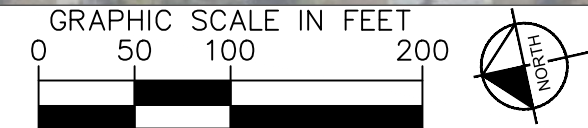
This document, together with the concepts and designs presented herein, is intended only for the specific purpose and client for which it was prepared. Reuse of and improper reliance on this document without written authorization and adaptation by Kimley-Horn and Associates, Inc. shall be without liability to Kimley-Horn and Associates, Inc.



| NO. | DATE | BY |
|-----|------|----|
| 1 | | |
| 2 | | |
| 3 | | |
| 4 | | |
| 5 | | |
| 6 | | |
| 7 | | |
| 8 | | |
| 9 | | |
| 10 | | |

| | |
|----------------------------------|-----------|
| DESIGNED BY: | ALB |
| DRAWN BY: | ELW |
| CHECKED BY: | NDQT |
| DATE: | 6/21/2022 |
| KIMLEY-HORN PROJECT NO. 11800005 | |

| |
|--------------|
| CONCEPT PLAN |
| SHEET NUMBER |
| 04 |



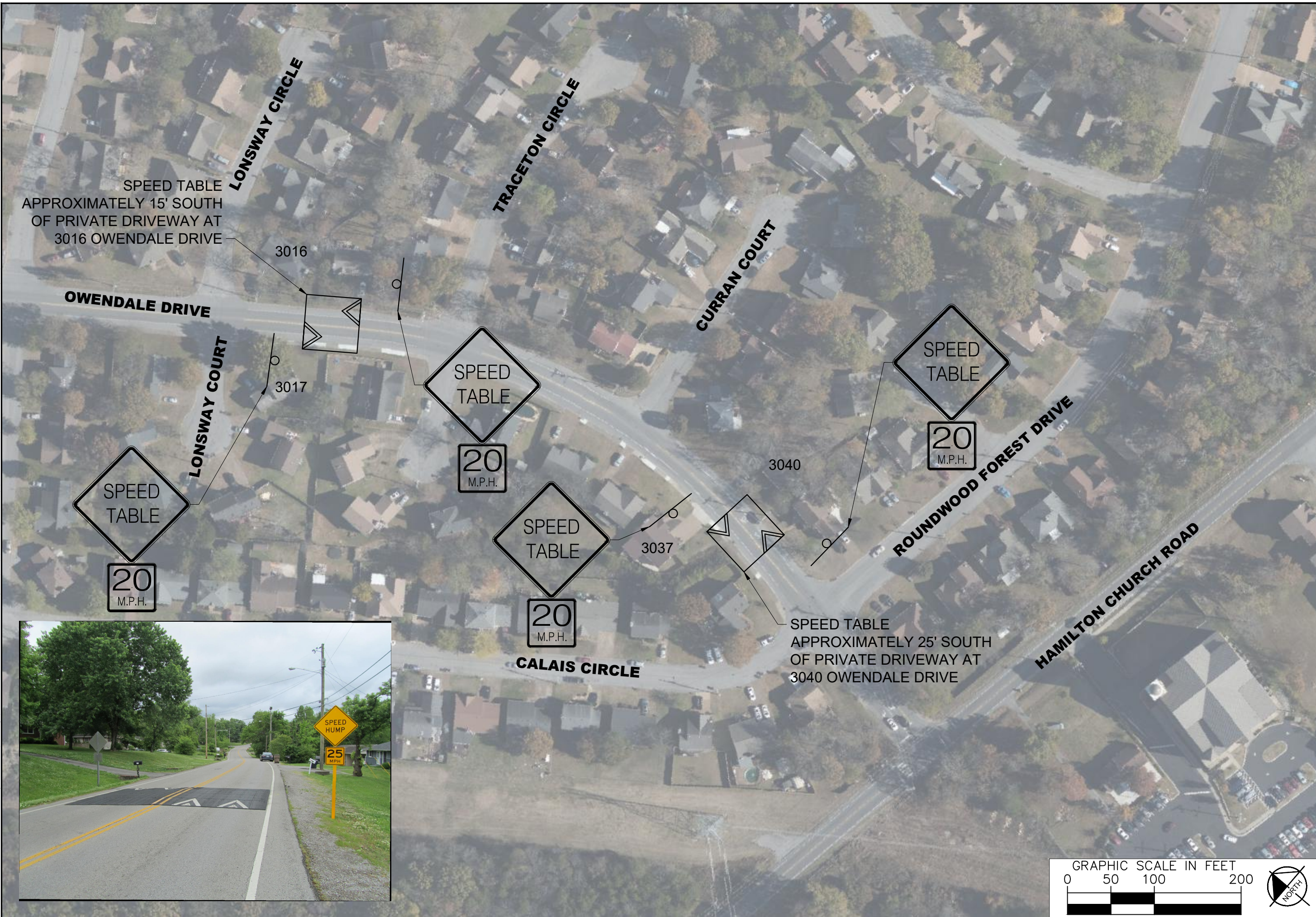
This document, together with the concepts and designs presented herein, is intended only for the specific purpose and client for which it was prepared. Reuse of and improper reliance on this document without written authorization and adaptation by Kimley-Horn and Associates, Inc. shall be without liability to Kimley-Horn and Associates, Inc.



| No. | BY | | DATE | REVISIONS |
|-----|----|---|------|-----------|
| | 1 | 2 | | |
| 1 | | | | |
| 2 | | | | |
| 3 | | | | |
| 4 | | | | |
| 5 | | | | |
| 6 | | | | |
| 7 | | | | |
| 8 | | | | |
| 9 | | | | |
| 10 | | | | |

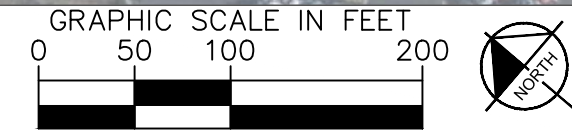
DESIGNED BY: ALB
 DRAWN BY: EJJW
 CHECKED BY: NDOT
 DATE: 6/21/2022
 KIMLEY-HORN PROJECT NO. 11800005

This document, together with the concepts and designs presented herein, is intended only for the specific purpose and client for which it was prepared. Reuse of and improper reliance on this document without written authorization and adaptation by Kimley-Horn and Associates, Inc. shall be without liability to Kimley-Horn and Associates, Inc.

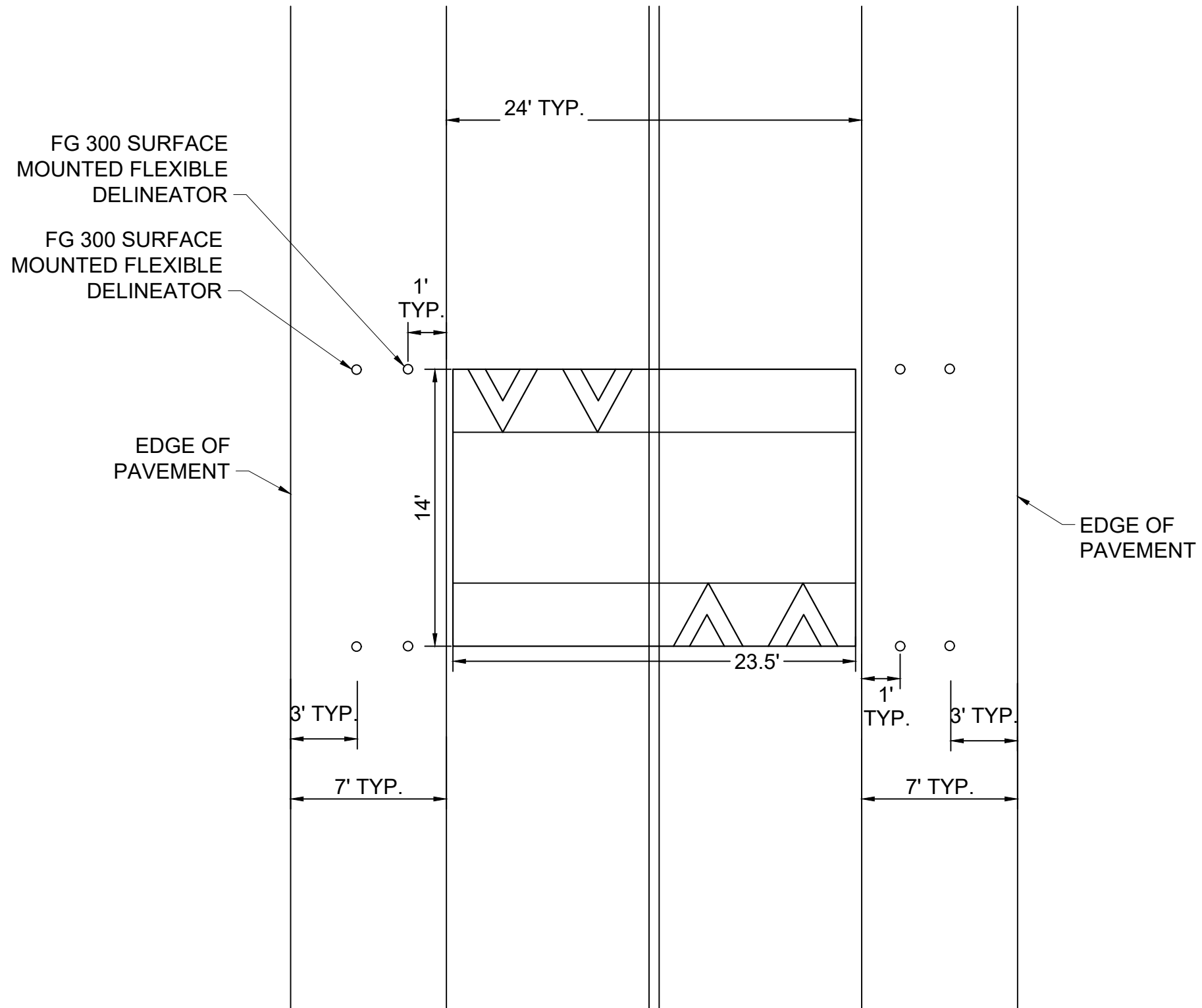


| NO. | DATE | BY | REVISIONS |
|-----|------|----|-----------|
| 1 | | | |
| 2 | | | |
| 3 | | | |
| 4 | | | |
| 5 | | | |
| 6 | | | |
| 7 | | | |
| 8 | | | |
| 9 | | | |
| 10 | | | |

| | |
|----------------------------------|-----------|
| DESIGNED BY: | ALB |
| DRAWN BY: | EJW |
| CHECKED BY: | NDQT |
| DATE: | 6/21/2022 |
| KIMLEY-HORN PROJECT NO. 11800005 | |
| CONCEPT PLAN | |
| SHEET NUMBER | |
| 06 | |



OWENDALE DRIVE: SPEED TABLES WITH FLEXIBLE DELINEATORS



| NO. | REVISIONS | DATE | BY |
|-----|-----------|------|----|
| 1 | | | |
| 2 | | | |
| 3 | | | |
| 4 | | | |
| 5 | | | |
| 6 | | | |
| 7 | | | |
| 8 | | | |
| 9 | | | |
| 10 | | | |

DESIGNED BY: ALB
 DRAWN BY: EJJW
 CHECKED BY: NDOT
 DATE: 6/21/2022
 KIMLEY-HORN PROJECT NO. 11800005

CONCEPT PLAN

SHEET NUMBER
07

This document, together with the concepts and designs presented herein, is intended only for the specific purpose and client for which it was prepared. Review of and proper reliance on this document without written authorization and adaptation by Kimley-Horn and Associates, Inc. shall be without liability to Kimley-Horn and Associates, Inc.