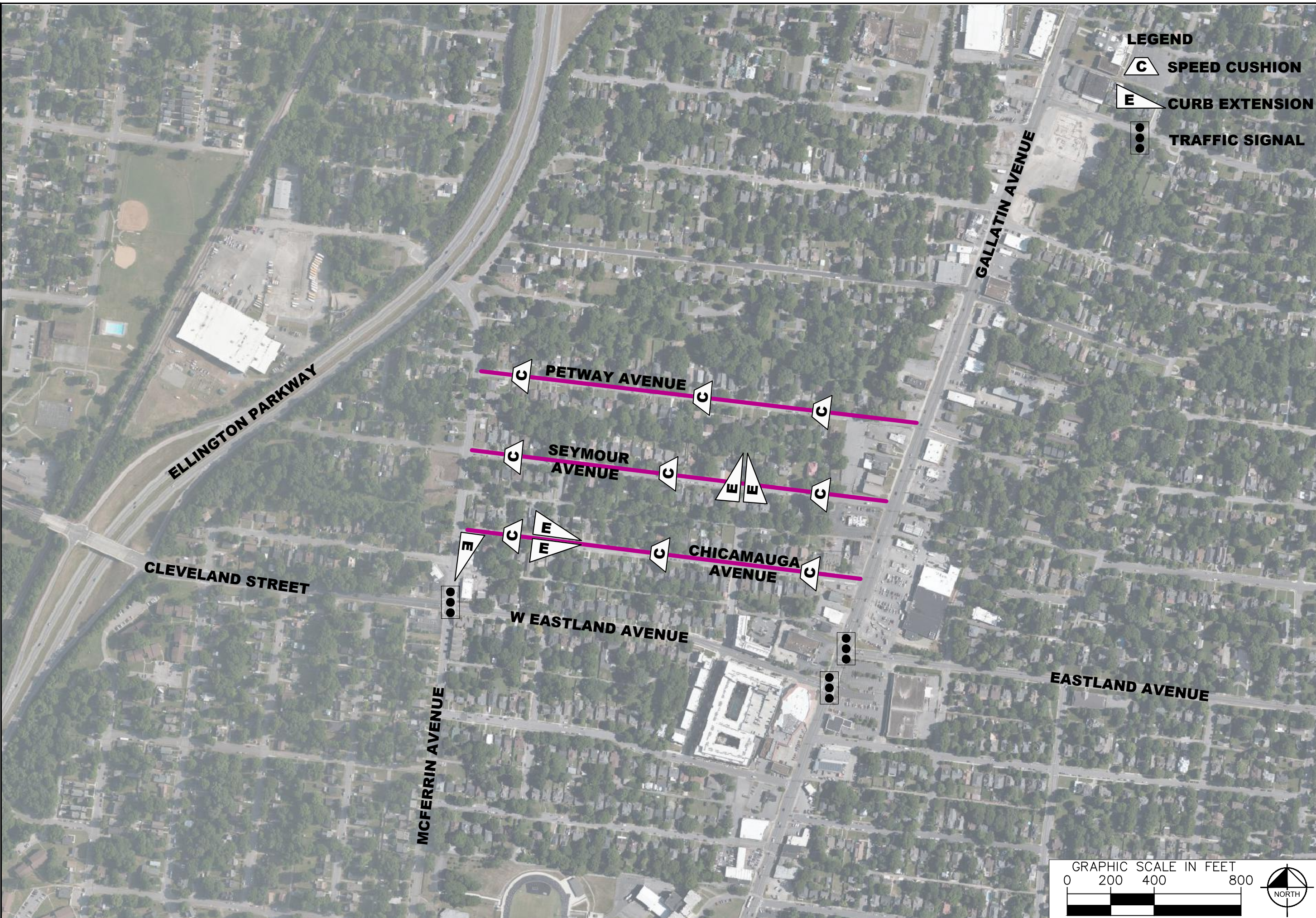


This document, together with the concepts and designs presented herein, is intended only for the specific purpose and client for which it was prepared. Release of and improper reliance on this document without written authorization and adaptation by Kimley-Horn and Associates, Inc. shall be without liability to Kimley-Horn and Associates, Inc.



**LEGEND**

- C** SPEED CUSHION
- E** CURB EXTENSION
- TRAFFIC SIGNAL



**GREENWOOD  
TRAFFIC CALMING  
NASHVILLE, TN**

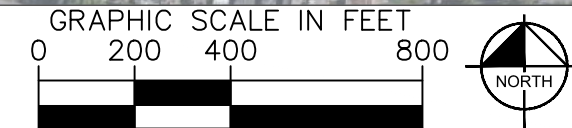
**DRAFT  
PRELIMINARY  
PLANS  
FOR REVIEW ONLY**

NO.	DATE	BY
1		
2		
3		
4		
5		
6		
7		
8		
9		
10		

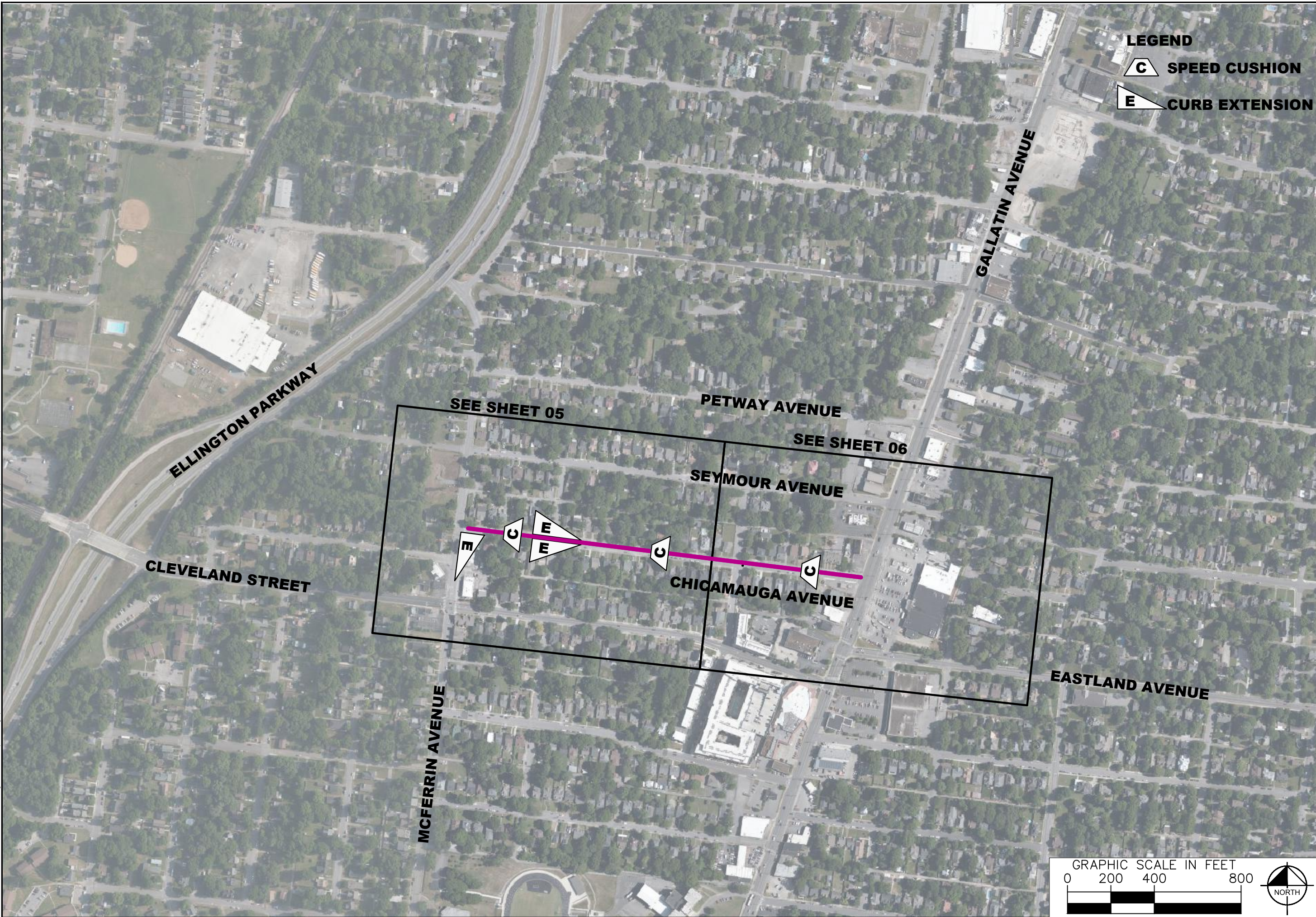
REVISIONS	DATE	BY

DESIGNED BY: ALE  
 DRAWN BY: LRK  
 CHECKED BY: NDOT  
 DATE: 9/12/2022  
 KIMLEY-HORN PROJECT NO. 11890005  
 CONCEPT PLAN  
 SHEET NUMBER  
**01**





This document, together with the concepts and designs presented herein, is intended only for the specific purpose and client for which it was prepared. Reuse of and improper reliance on this document without written authorization and adaptation by Kimley-Horn and Associates, Inc. shall be without liability to Kimley-Horn and Associates, Inc.



**LEGEND**

- C** SPEED CUSHION
- E** CURB EXTENSION

**NDOT**

**GREENWOOD**  
**TRAFFIC CALMING**  
NASHVILLE, TN

**DRAFT**  
**PRELIMINARY**  
**PLANS**  
FOR REVIEW ONLY

NO.	DATE	BY	REVISIONS
1			
2			
3			
4			
5			
6			
7			
8			
9			
10			

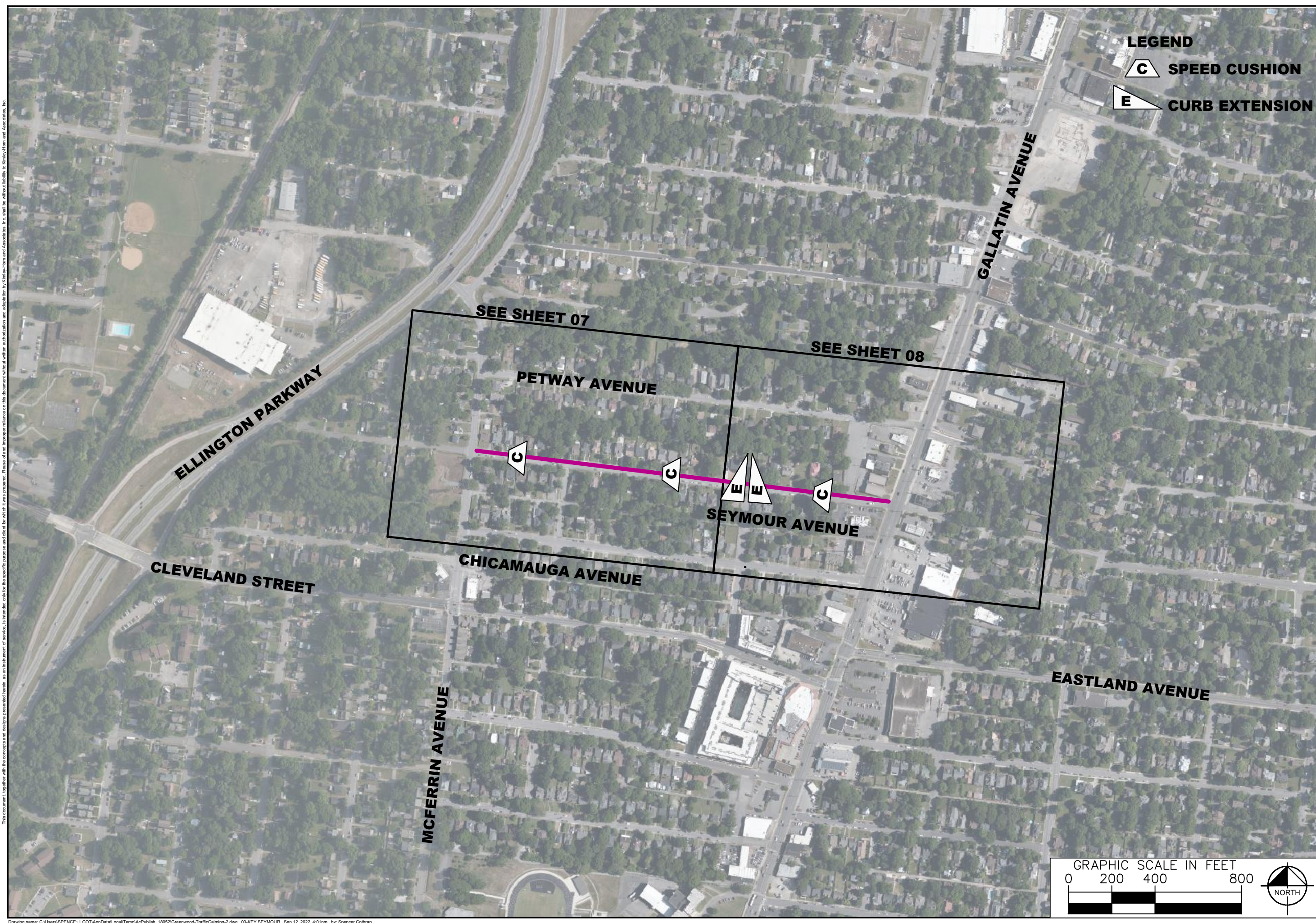
DESIGNED BY: ALB  
 DRAWN BY: LRK  
 CHECKED BY: NDOT  
 DATE: 9/12/2022  
 KIMLEY-HORN PROJECT NO. 11890005

CONCEPT PLAN  
SHEET NUMBER  
**02**





This document, together with the concepts and designs presented herein, is intended only for the specific purpose and client for which it was prepared. Reuse of and improper reliance on the documents without written authorization and adaptation by Kimley-Horn and Associates, Inc. shall be without liability to Kimley-Horn and Associates, Inc.



**LEGEND**

**C** SPEED CUSHION

**E** CURB EXTENSION



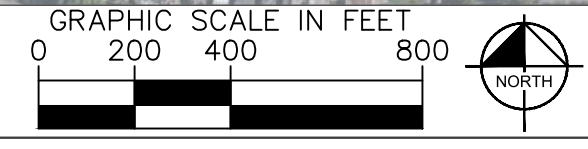
**GREENWOOD**  
**TRAFFIC CALMING**  
 NASHVILLE, TN

**DRAFT**  
**PRELIMINARY**  
**PLANS**  
 FOR REVIEW ONLY

NO.	DATE	BY	REVISIONS
1			
2			
3			
4			
5			
6			
7			
8			
9			
10			

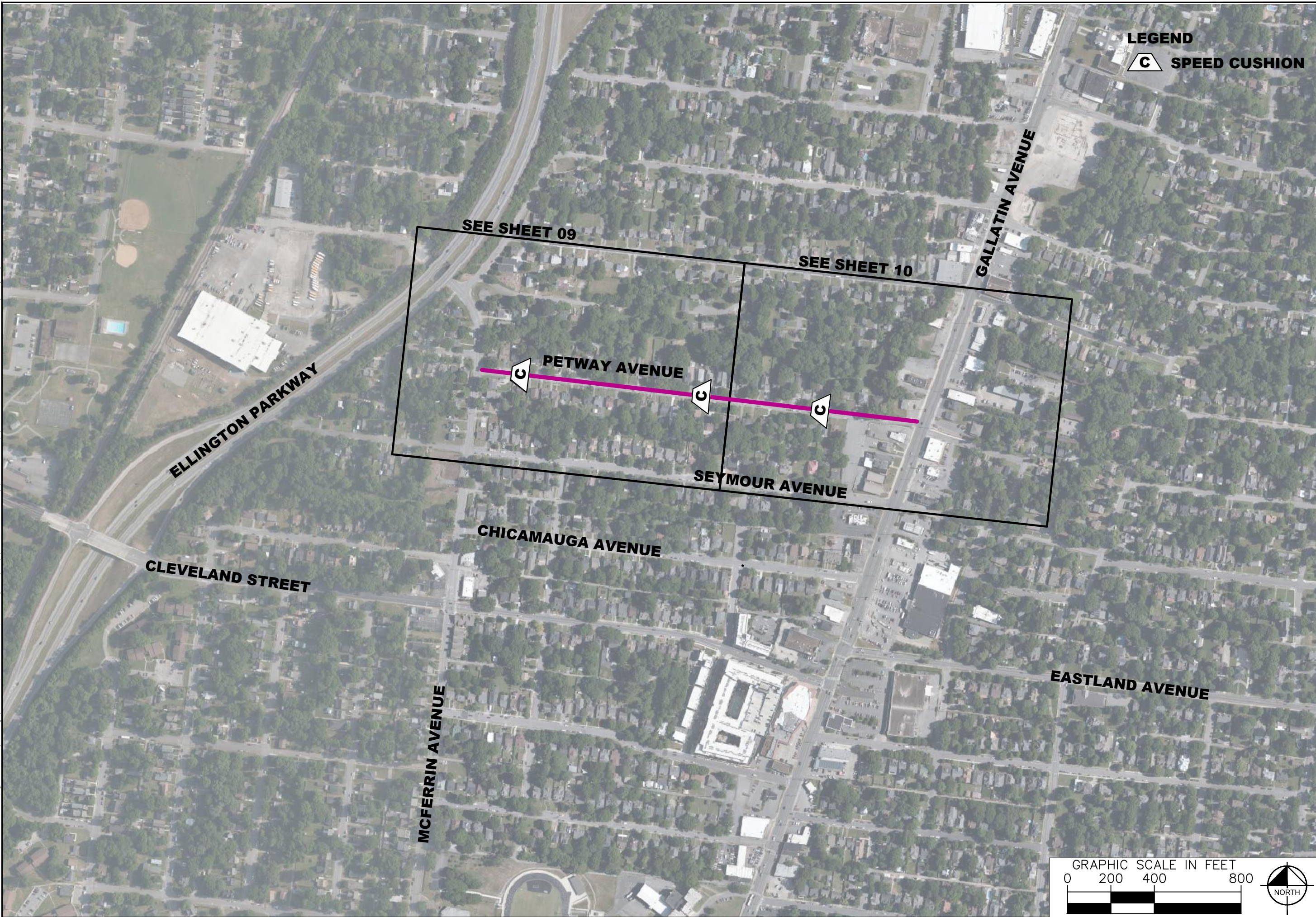
DESIGNED BY: LRK  
 DRAWN BY: NDOT  
 CHECKED BY: NDOT  
 DATE: 9/12/2022  
 KIMLEY-HORN PROJECT NO. 11890005

CONCEPT PLAN  
 SHEET NUMBER  
**03**





This document, together with the concepts and designs presented herein, is intended only for the specific purpose and client for which it was prepared. Release of and improper reliance on this document without written authorization and adaptation by Kimley-Horn and Associates, Inc. shall be without liability to Kimley-Horn and Associates, Inc.



**LEGEND**  
**C** SPEED CUSHION



**GREENWOOD**  
**TRAFFIC CALMING**  
NASHVILLE, TN

**DRAFT**  
**PRELIMINARY**  
**PLANS**  
FOR REVIEW ONLY

NO.	DATE	BY	REVISIONS
1			
2			
3			
4			
5			
6			
7			
8			
9			
10			

DESIGNED BY: ALB  
 DRAWN BY: LRK  
 CHECKED BY: NDOT  
 DATE: 9/12/2022  
 KIMLEY-HORN PROJECT NO. 11890005

CONCEPT PLAN  
 SHEET NUMBER  
**04**



This document, together with the concepts and designs presented herein, is intended only for the specific purpose and client for which it was prepared. Release of and improper reliance on this document without written authorization and adaptation by Kimley-Horn and Associates, Inc. shall be without liability to Kimley-Horn and Associates, Inc.



NO.	DATE	BY
1		
2		
3		
4		
5		
6		
7		
8		
9		
10		

DESIGNED BY:	ALB
DRAWN BY:	LRK
CHECKED BY:	NDOT
DATE:	9/12/2022
KIMLEY-HORN PROJECT NO.	11890005



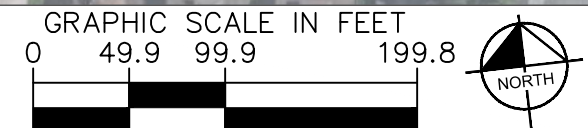


This document, together with the concepts and designs presented herein, is intended only for the specific purpose and client for which it was prepared. Release of and improper reliance on this document without written authorization and adaptation by Kimley-Horn and Associates, Inc. shall be without liability to Kimley-Horn and Associates, Inc.



NO.	REVISIONS	DATE	BY
1			
2			
3			
4			
5			
6			
7			
8			
9			
10			

DESIGNED BY: ALB  
 DRAWN BY: LRK  
 CHECKED BY: NDOT  
 DATE: 9/12/2022  
 KIMLEY-HORN PROJECT NO. 11890005

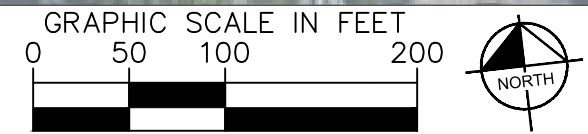






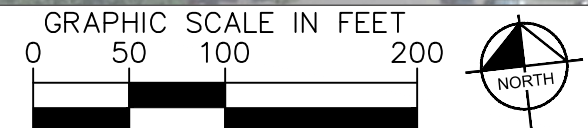
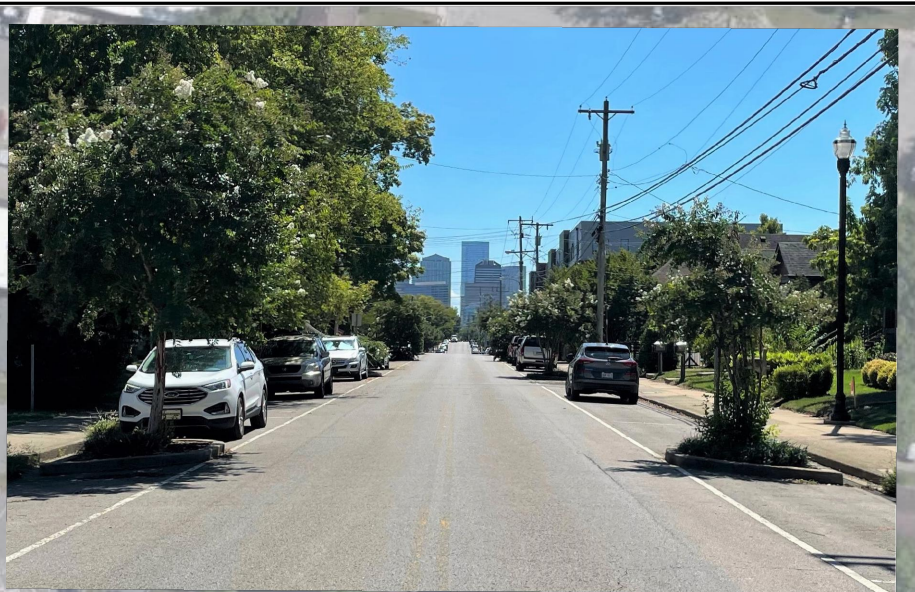
NO.	DATE	BY	REVISIONS
1			
2			
3			
4			
5			
6			
7			
8			
9			
10			

DESIGNED BY:	ALB
DRAWN BY:	LRK
CHECKED BY:	NDOT
DATE:	9/12/2022
KIMLEY-HORN PROJECT NO.	11890005



This document, together with the concepts and designs presented herein, is intended only for the specific purpose and client for which it was prepared. Reuse of and improper reliance on the document without written authorization and adaptation by Kimley-Horn and Associates, Inc. shall be without liability to Kimley-Horn and Associates, Inc.





NO.	DATE	BY	REVISIONS
1			
2			
3			
4			
5			
6			
7			
8			
9			
10			

DESIGNED BY: \_\_\_\_\_  
 DRAWN BY: \_\_\_\_\_  
 CHECKED BY: \_\_\_\_\_  
 DATE: 9/12/2022  
 KIMLEY-HORN PROJECT NO. 11890005



This document, together with the concepts and designs presented herein, is intended only for the specific purpose and client for which it was prepared. Release of and improper reliance on the document without written authorization and adaptation by Kimley-Horn and Associates, Inc. shall be without liability to Kimley-Horn and Associates, Inc.



**NDOT**

**GREENWOOD  
TRAFFIC CALMING  
NASHVILLE, TN**

**DRAFT  
PRELIMINARY  
PLANS  
FOR REVIEW ONLY**

NO.	REVISIONS	BY	
		DATE	
1			
2			
3			
4			
5			
6			
7			
8			
9			
10			

DESIGNED BY: ALB  
DRAWN BY: LRK  
CHECKED BY: NDOT  
DATE: 9/12/2022  
KIMLEY-HORN PROJECT NO. 11890005

CONCEPT PLAN  
SHEET NUMBER  
**09**





This document, together with the concepts and designs presented herein, is intended only for the specific purpose and client for which it was prepared. Reuse of and improper reliance on the document without written authorization and adaptation by Kimley-Horn and Associates, Inc. shall be without liability to Kimley-Horn and Associates, Inc.



**NDOT**

**GREENWOOD  
TRAFFIC CALMING  
NASHVILLE, TN**

**DRAFT  
PRELIMINARY  
PLANS  
FOR REVIEW ONLY**

NO.	DATE	BY	REVISIONS
1			
2			
3			
4			
5			
6			
7			
8			
9			
10			

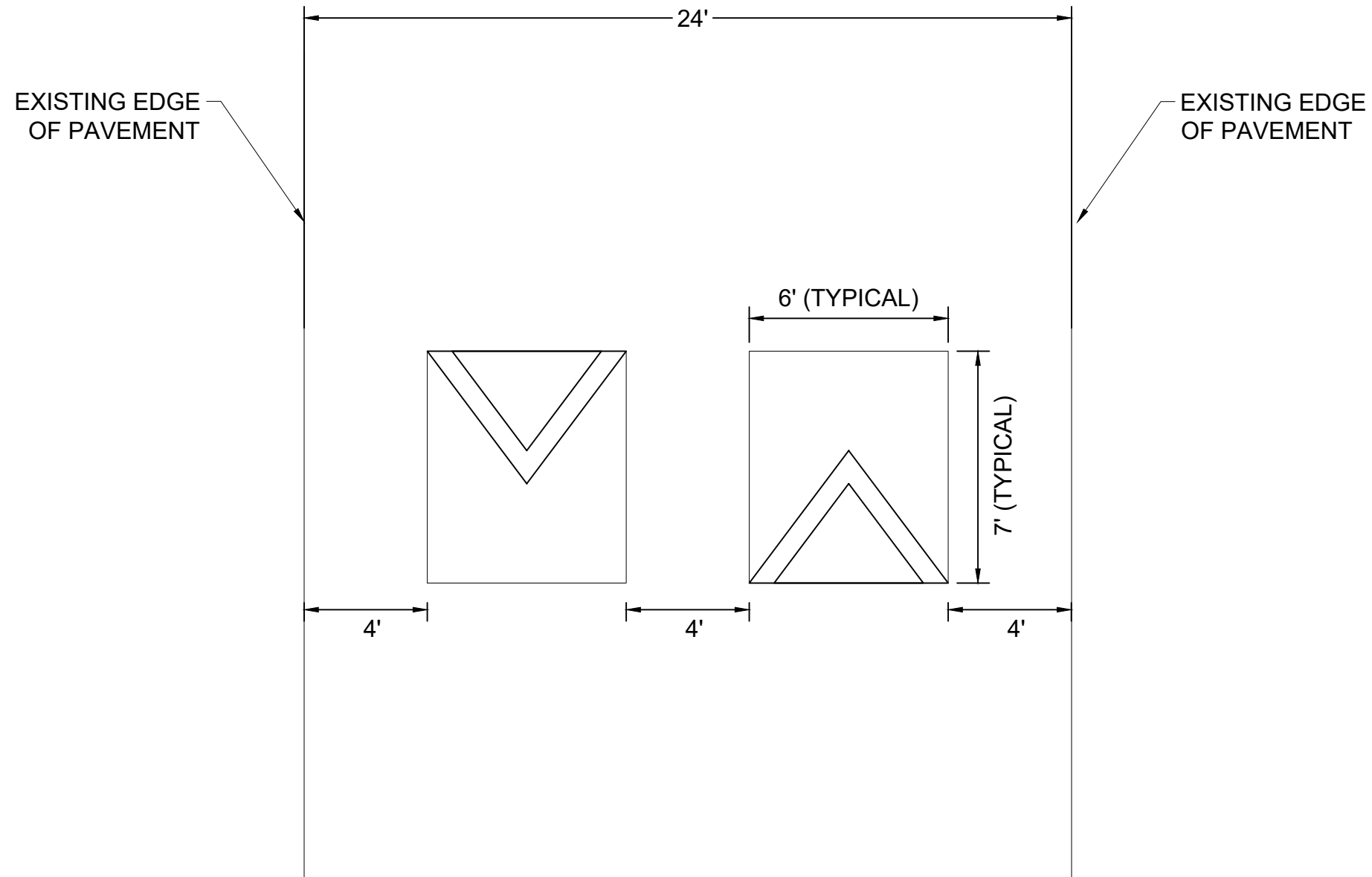
DESIGNED BY: ALB  
 DRAWN BY: LRK  
 CHECKED BY: NDOT  
 DATE: 9/12/2022  
 KIMLEY-HORN PROJECT NO. 11890005

CONCEPT PLAN  
 SHEET NUMBER  
**10**



This document, together with the concepts and designs presented herein, is intended only for the specific purpose and client for which it was prepared. Release of and improper reliance on the documents without written authorization and adaptation by KIMLEY-HORN and Associates, Inc. shall be without liability to KIMLEY-HORN and Associates, Inc.

### SPEED CUSHION CONFIGURATION A



**GREENWOOD  
TRAFFIC CALMING  
NASHVILLE, TN**

**DRAFT  
PRELIMINARY  
PLANS  
FOR REVIEW ONLY**

No.	1	2	3	4	5	6	7	8	9	10
REVISIONS										
DATE										
BY										

DESIGNED BY: ALB  
 DRAWN BY: LRK  
 CHECKED BY: NDOT  
 DATE: 9/12/2022  
 KIMLEY-HORN PROJECT NO. 11890005

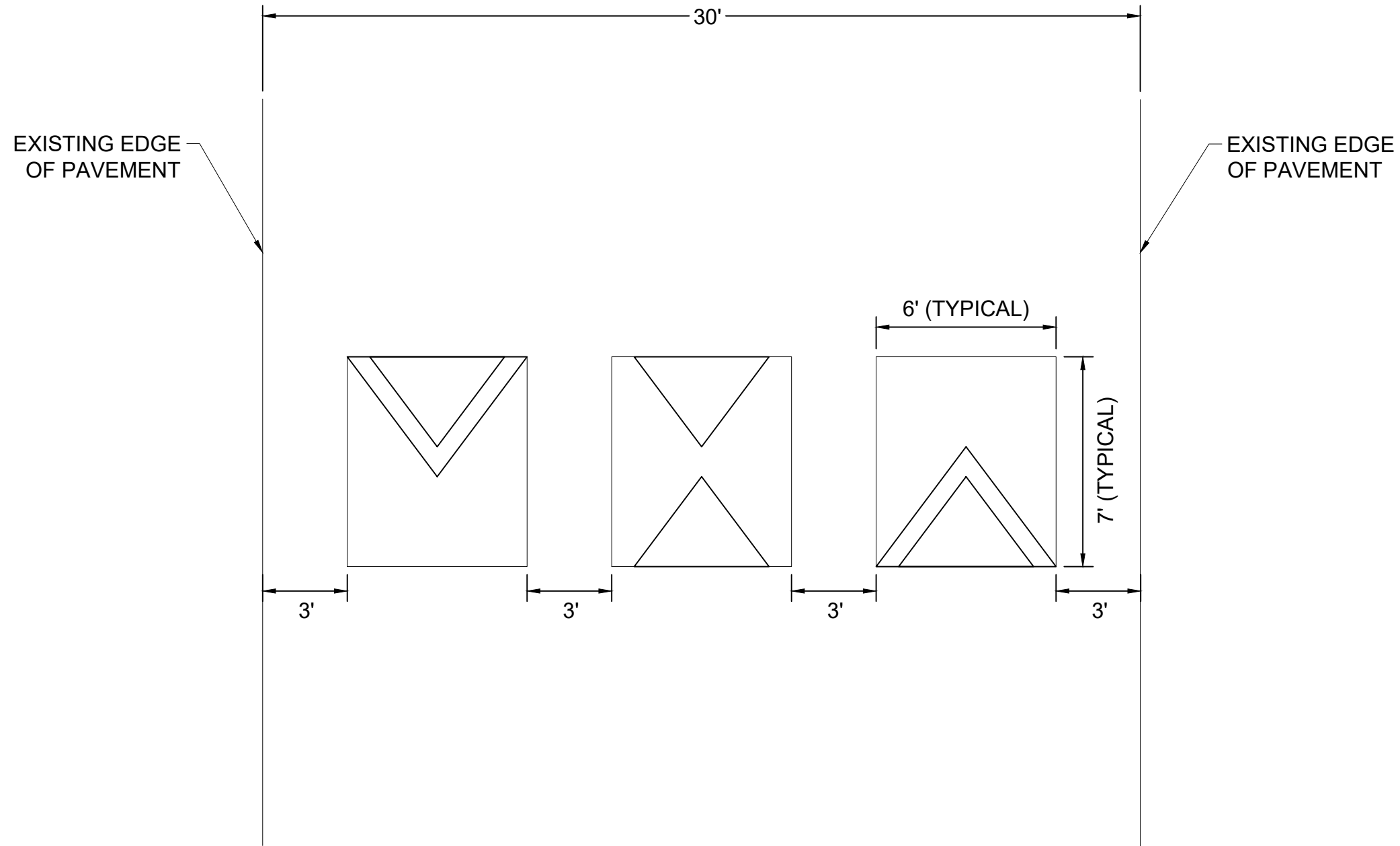
DETAIL

SHEET NUMBER  
**11**



This document, together with the concepts and designs presented herein, is intended only for the specific purpose and client for which it was prepared. Release of and improper reliance on the documents without written authorization and adaptation by Kimley-Horn and Associates, Inc. shall be without liability to Kimley-Horn and Associates, Inc.

### SPEED CUSHION CONFIGURATION B



No.	1	2	3	4	5	6	7	8	9	10
REVISIONS										
DATE										
BY										

DESIGNED BY: ALB  
 DRAWN BY: LRK  
 CHECKED BY: NDOT  
 DATE: 9/12/2022  
 KIMLEY-HORN PROJECT NO. 11890005

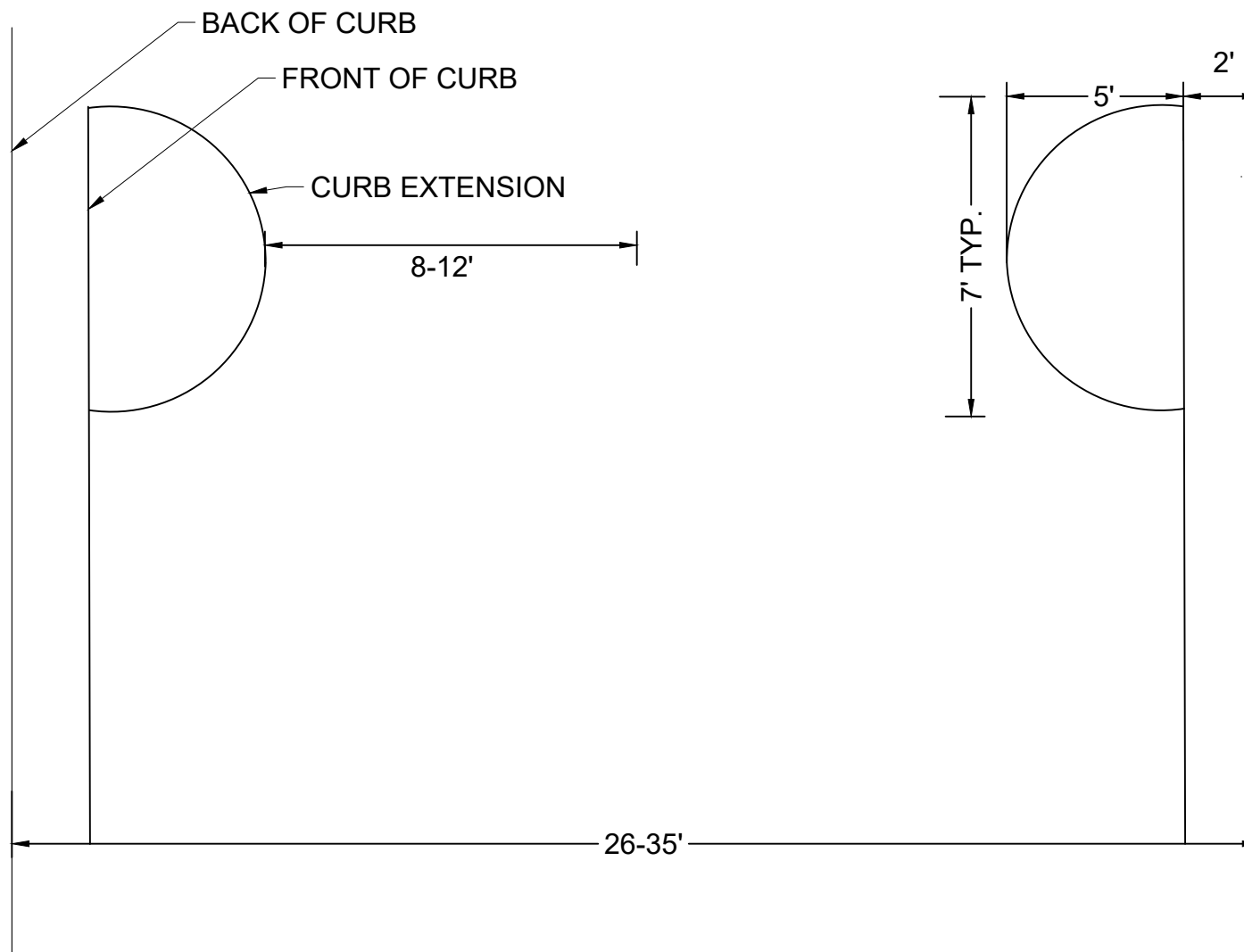
DETAIL

SHEET NUMBER  
**12**



This document, together with the concepts and designs presented herein, is intended only for the specific purpose and client for which it was prepared. Release of and improper reliance on the documents without written authorization and adaptation by Kimley-Horn and Associates, Inc. shall be without liability to Kimley-Horn and Associates, Inc.

### CURB EXTENSION CONFIGURATION



**GREENWOOD  
TRAFFIC CALMING  
NASHVILLE, TN**

**DRAFT  
PRELIMINARY  
PLANS  
FOR REVIEW ONLY**

No.	1	2	3	4	5	6	7	8	9	10
REVISIONS										
DATE										
BY										

DESIGNED BY: ALB  
 DRAWN BY: LRK  
 CHECKED BY: NDOT  
 DATE: 9/12/2022  
 KIMLEY-HORN PROJECT NO. 11890005

DETAIL

SHEET NUMBER  
**13**