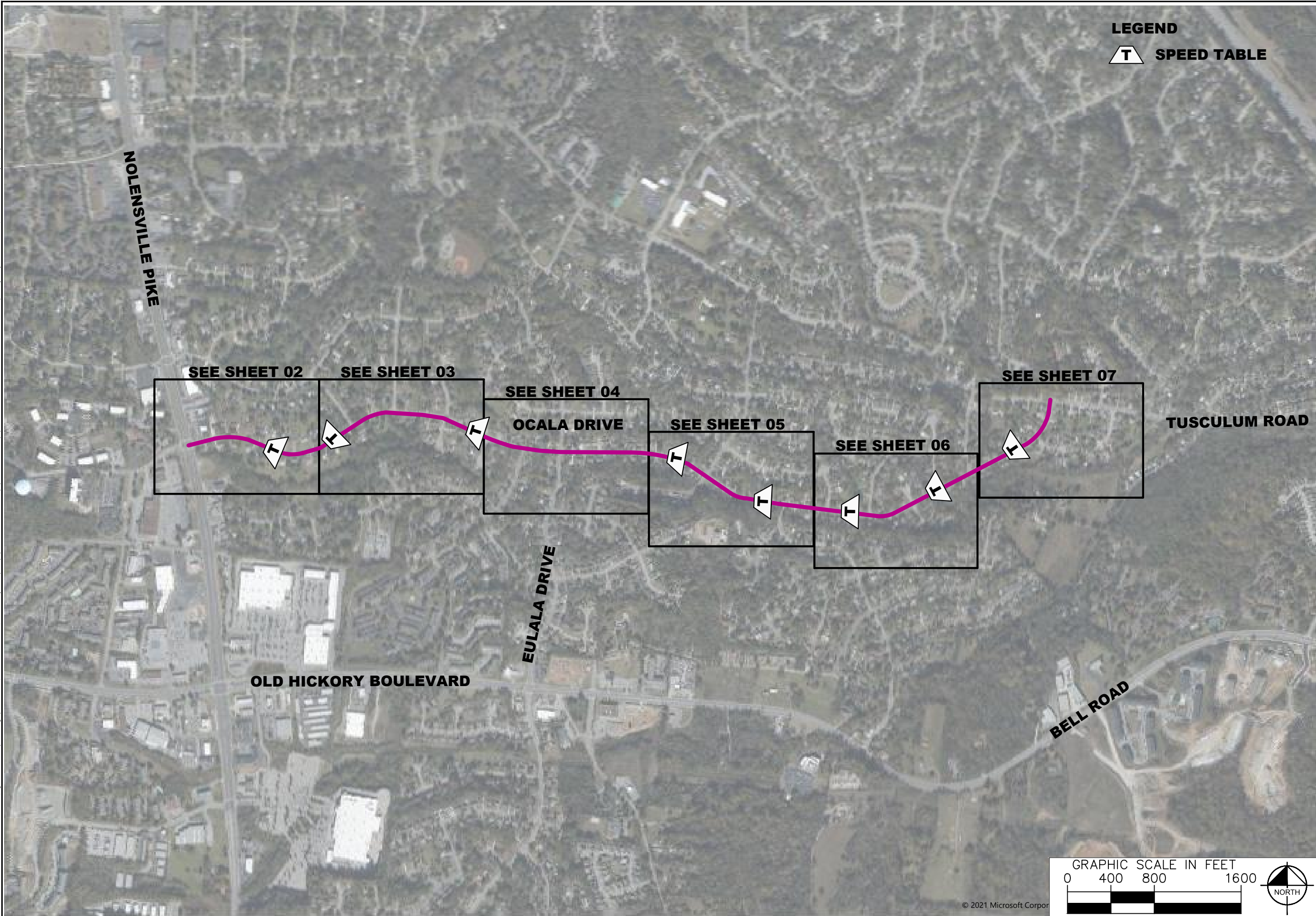


This document, together with the concepts and designs presented herein, is intended only for the specific purpose and client for which it was prepared. Reuse of and improper reliance on this document without written authorization and adaptation by Kimley-Horn and Associates, Inc. shall be without liability to Kimley-Horn and Associates, Inc.



LEGEND

 **SPEED TABLE**



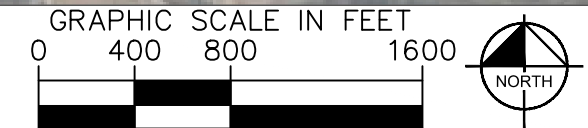
**OCALA DRIVE
TRAFFIC CALMING
NASHVILLE, TN**

**DRAFT
PRELIMINARY
PLANS
FOR REVIEW ONLY**

NO.	DATE	BY
1		
2		
3		
4		
5		
6		
7		
8		
9		
10		

REVISIONS

DESIGNED BY:	ALB
DRAWN BY:	EJW
CHECKED BY:	NDOT
DATE:	10/10/2022
KIMLEY-HORN PROJECT NO.:	118000005



© 2021 Microsoft Corporation

This document, together with the concepts and designs presented herein, is intended only for the specific purpose and client for which it was prepared. Release of and improper reliance on this document without written authorization and adaptation by Kimley-Horn and Associates, Inc. shall be without liability to Kimley-Horn and Associates, Inc.

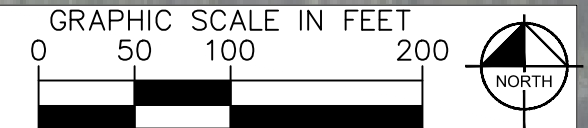


NO.	REVISIONS	DATE	BY
1			
2			
3			
4			
5			
6			
7			
8			
9			
10			

DESIGNED BY: ALB
 DRAWN BY: E.J.W.
 CHECKED BY: NDOT
 DATE: 10/19/2022
 KIMLEY-HORN PROJECT NO. 11800005



SPEED TABLE
CONFIGURATION A
33' WEST OF DRIVEWAY AT
376 OCALA DRIVE



This document, together with the concepts and designs presented herein, is intended only for the specific purpose and client for which it was prepared. Release of and improper reliance on this document without written authorization and adaptation by Kimley-Horn and Associates, Inc. shall be without liability to Kimley-Horn and Associates, Inc.



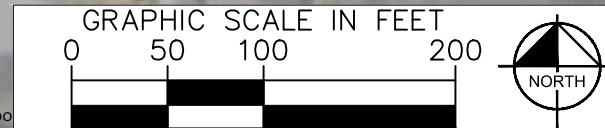
**OCALA DRIVE
TRAFFIC CALMING
NASHVILLE, TN**

**DRAFT
PRELIMINARY
PLANS
FOR REVIEW ONLY**

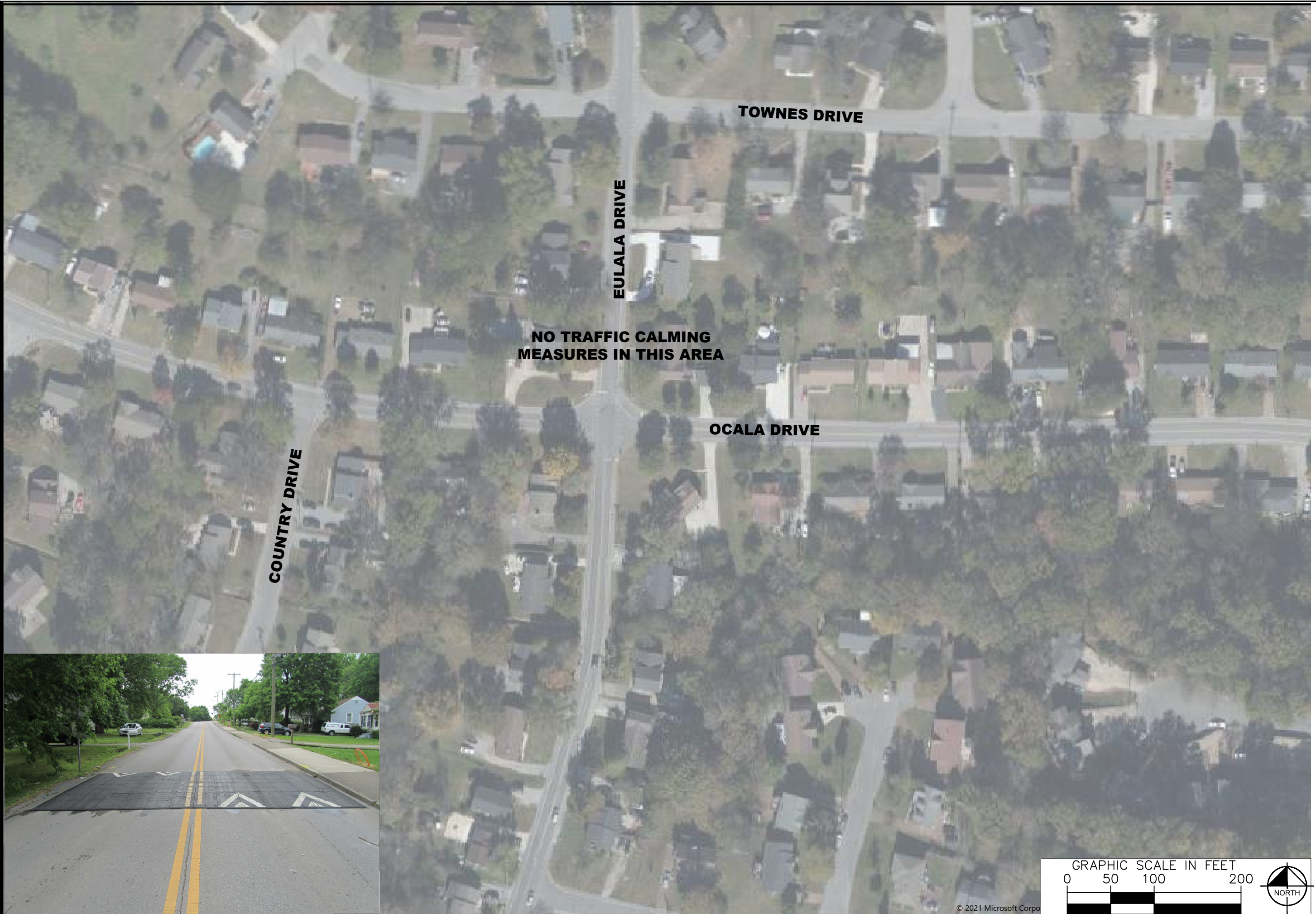
NO.	DATE	BY
1		
2		
3		
4		
5		
6		
7		
8		
9		
10		

DESIGNED BY: ALB
 DRAWN BY: EJJ
 CHECKED BY: NDOT
 DATE: 10/19/2022
 KIMLEY-HORN PROJECT NO. 11800005

CONCEPT PLAN
 SHEET NUMBER
03



This document, together with its concepts and designs presented herein, is intended only for the specific purpose and client for which it was prepared. Review of and improper reliance on this document without written authorization and adaptation by Kimley-Horn and Associates, Inc. shall be without liability to Kimley-Horn and Associates, Inc.



NDOT

**OCALA DRIVE
TRAFFIC CALMING
NASHVILLE, TN**

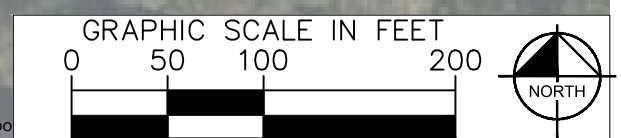
**DRAFT
PRELIMINARY
PLANS
FOR REVIEW ONLY**

NO.	DATE	BY
1		
2		
3		
4		
5		
6		
7		
8		
9		
10		

DESIGNED BY: ALB
 DRAWN BY: EJJ
 CHECKED BY: NDOT
 DATE: 10/19/2022
 KIMLEY-HORN PROJECT NO. 118000005

CONCEPT PLAN

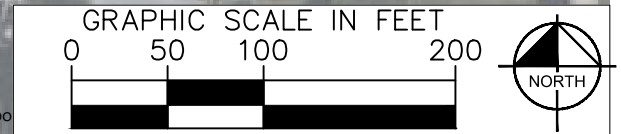
SHEET NUMBER
04



This document, together with the concepts and designs presented herein, is intended only for the specific purpose and client for which it was prepared. Release of and improper reliance on the document without written authorization and adaptation by Kimley-Horn and Associates, Inc. shall be without liability to Kimley-Horn and Associates, Inc.



NO.	DATE	BY
1		
2		
3		
4		
5		
6		
7		
8		
9		
10		



This document, together with the concepts and designs presented herein, is intended only for the specific purpose and client for which it was prepared. Reuse of and improper reliance on this document without written authorization and adaptation by Kimley-Horn and Associates, Inc. shall be without liability to Kimley-Horn and Associates, Inc.



NO.	DATE	BY
1		
2		
3		
4		
5		
6		
7		
8		
9		
10		

DESIGNED BY:	ALB
DRAWN BY:	EJW
CHECKED BY:	NDOT
DATE:	10/10/2022
KIMLEY-HORN PROJECT NO. 118000005	

This document, together with the concepts and designs presented herein, is intended only for the specific purpose and client for which it was prepared. Release of and improper reliance on the documents without written authorization and adaptation by Kimley-Horn and Associates, Inc. shall be without liability to Kimley-Horn and Associates, Inc.



SPEED TABLE
CONFIGURATION B
37' EAST OF DRIVEWAY AT
86 OCALA DRIVE



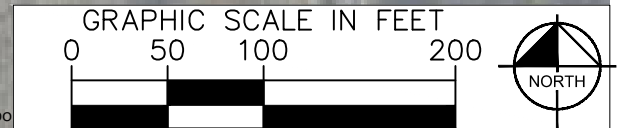
OCALA DRIVE
TRAFFIC CALMING
NASHVILLE, TN

DRAFT
PRELIMINARY
PLANS
FOR REVIEW ONLY

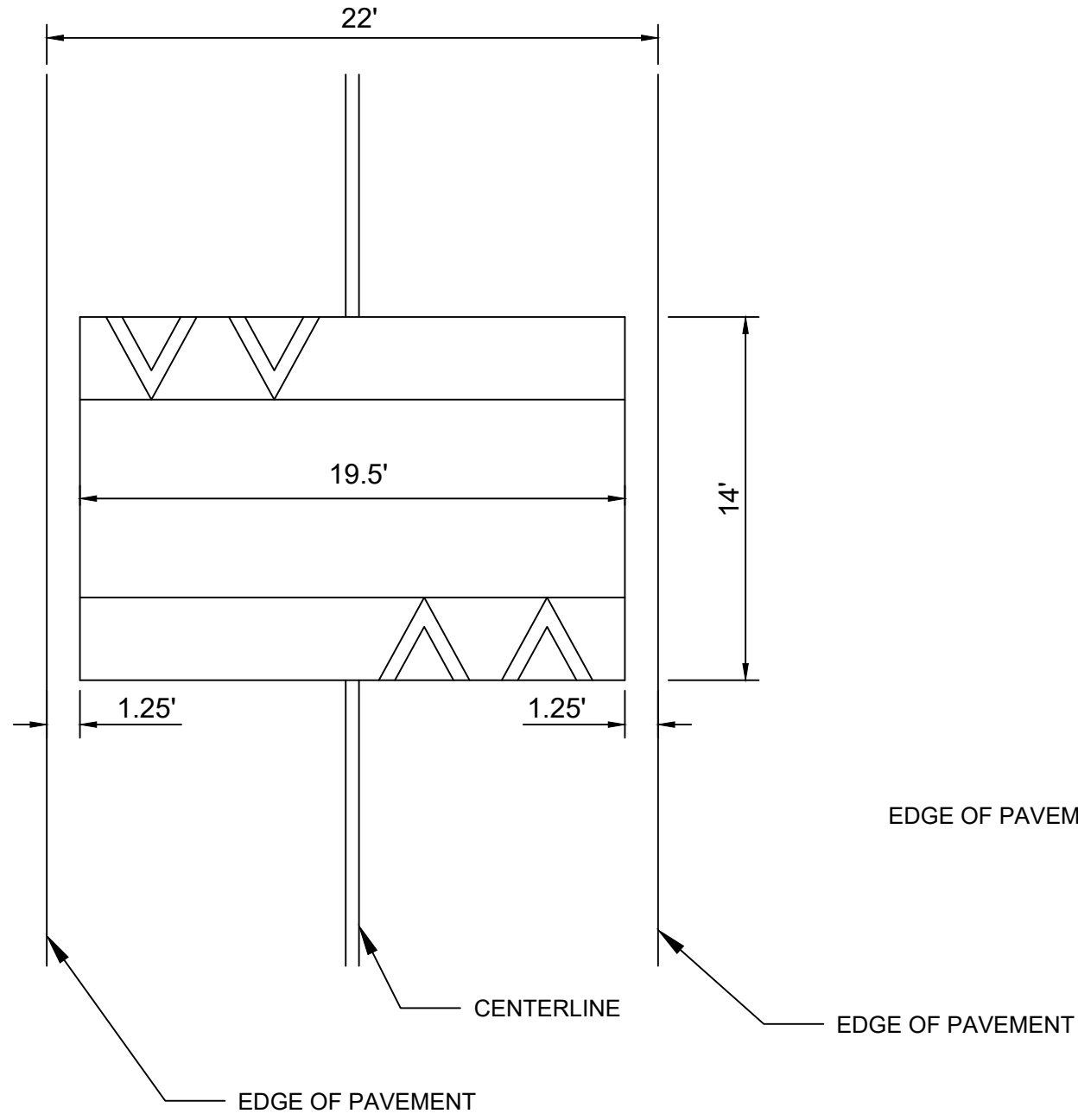
NO.	REVISIONS	DATE	BY
1			
2			
3			
4			
5			
6			
7			
8			
9			
10			

DESIGNED BY: ALB
 DRAWN BY: E.J.W.
 CHECKED BY: NDOT
 DATE: 10/19/2022
 KIMLEY-HORN PROJECT NO. 118000005

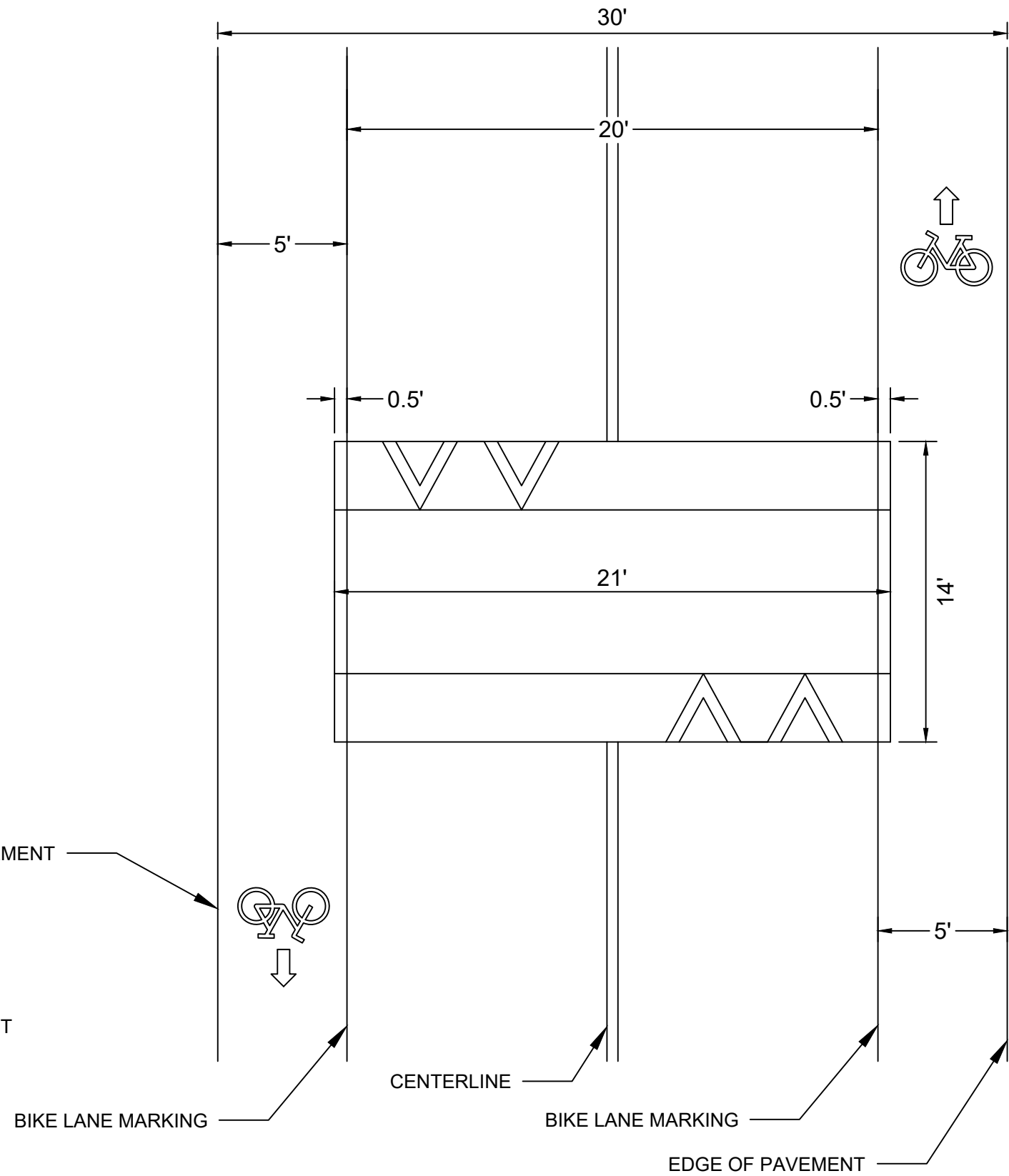
CONCEPT PLAN
 SHEET NUMBER
07



SPEED TABLE: CONFIGURATION A



SPEED TABLE: CONFIGURATION B



This document, together with the concepts and designs presented herein, is intended only for the specific purpose and client for which it was prepared. Release of and improper reliance on this document without written authorization and adaptation by Kimley-Horn and Associates, Inc. shall be without liability to Kimley-Horn and Associates, Inc.

NO.	DATE	BY
1		
2		
3		
4		
5		
6		
7		
8		
9		
10		

DESIGNED BY:	ALB
DRAWN BY:	EJW
CHECKED BY:	NDOT
DATE:	10/19/2022
KIMLEY-HORN PROJECT NO. 11800005	

CONCEPT PLAN

SHEET NUMBER
08