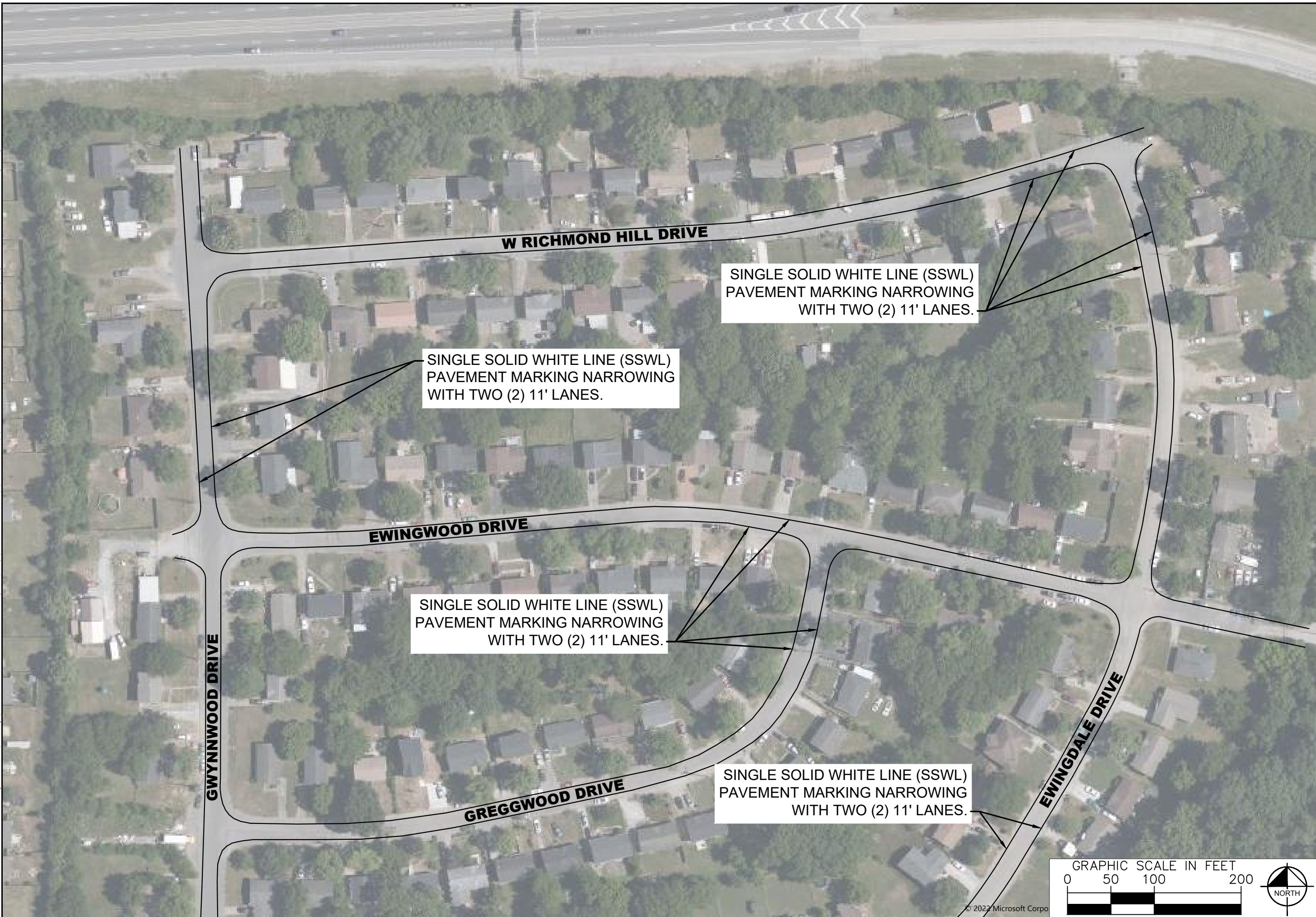
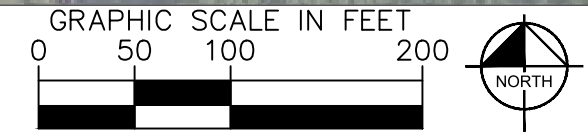


This document, together with the concepts and designs presented herein, is intended only for the specific purpose and client for which it was prepared. Release of and improper reliance on the document without written authorization and adaptation by Kimley-Horn and Associates, Inc. shall be without liability to Kimley-Horn and Associates, Inc.



NO.	REVISIONS	DATE	BY
1			
2			
3			
4			
5			
6			
7			
8			
9			
10			

DESIGNED BY:	REW
DRAWN BY:	EJW
CHECKED BY:	NDOT
DATE:	8/31/2022
KIMLEY-HORN PROJECT NO. 11890005	
CONCEPT PLAN	
SHEET NUMBER 04	



This document, together with the concepts and designs presented herein, is intended only for the specific purpose and client for which it was prepared. Reuse of and improper reliance on the documents without written authorization and adaptation by Kimley-Horn and Associates, Inc. shall be without liability to Kimley-Horn and Associates, Inc.

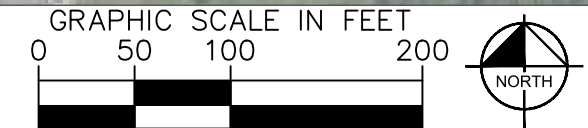


**GOLDEN VALLEY
TRAFFIC CALMING
NASHVILLE, TN**

**DRAFT
PRELIMINARY
PLANS
FOR REVIEW ONLY**

NO.	REVISIONS	DATE	BY
1			
2			
3			
4			
5			
6			
7			
8			
9			
10			

DESIGNED BY: EW
 DRAWN BY: EW
 CHECKED BY: NDOT
 DATE: 8/31/2022
 KIMLEY-HORN PROJECT NO. 118900005



CONCEPT PLAN
SHEET NUMBER
07

This document, together with the concepts and designs presented herein, is intended only for the specific purpose and client for which it was prepared. Release of and improper reliance on the document without written authorization and adaptation by Kimley-Horn and Associates, Inc. shall be without liability to Kimley-Horn and Associates, Inc.

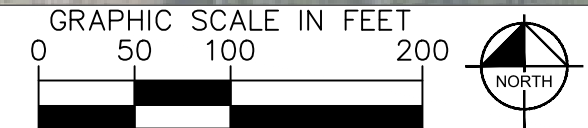


**GOLDEN VALLEY
TRAFFIC CALMING
NASHVILLE, TN**

**DRAFT
PRELIMINARY
PLANS
FOR REVIEW ONLY**

NO.	REVISIONS	DATE	BY
1			
2			
3			
4			
5			
6			
7			
8			
9			
10			

DESIGNED BY: _____
DRAWN BY: _____
CHECKED BY: _____
DATE: 8/31/2022
KIMLEY-HORN PROJECT NO. 11890005



CONCEPT PLAN
SHEET NUMBER
08

This document, together with the concepts and designs presented herein, is intended only for the specific purpose and client for which it was prepared. Release of and improper reliance on this document without written authorization and adaptation by Kimley-Horn and Associates, Inc. shall be without liability to Kimley-Horn and Associates, Inc.



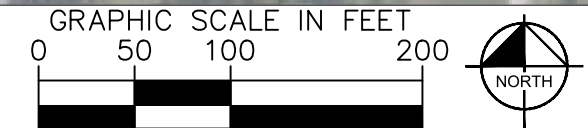
**GOLDEN VALLEY
TRAFFIC CALMING
NASHVILLE, TN**

**DRAFT
PRELIMINARY
PLANS
FOR REVIEW ONLY**

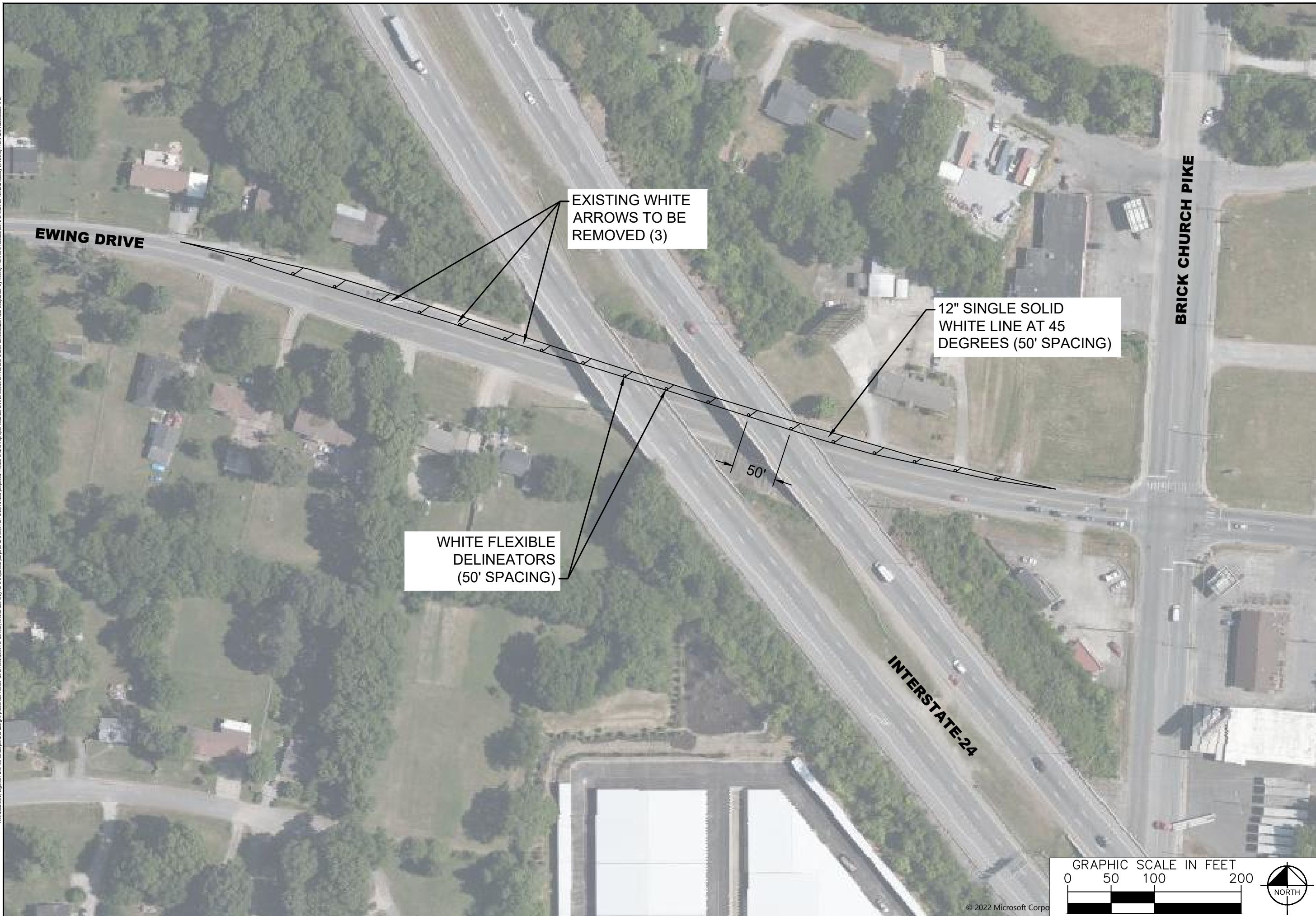
NO.	REVISIONS	DATE	BY
1			
2			
3			
4			
5			
6			
7			
8			
9			
10			

DESIGNED BY: EJV
 DRAWN BY: EJV
 CHECKED BY: NDOT
 DATE: 8/31/2022
 KIMLEY-HORN PROJECT NO. 11890005

CONCEPT PLAN
 SHEET NUMBER
09

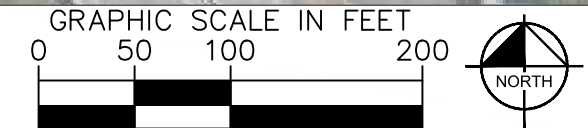


This document, together with the concepts and designs presented herein, is intended only for the specific purpose and client for which it was prepared. Release of and improper reliance on this document without written authorization and adaptation by Kimley-Horn and Associates, Inc. shall be without liability to Kimley-Horn and Associates, Inc.



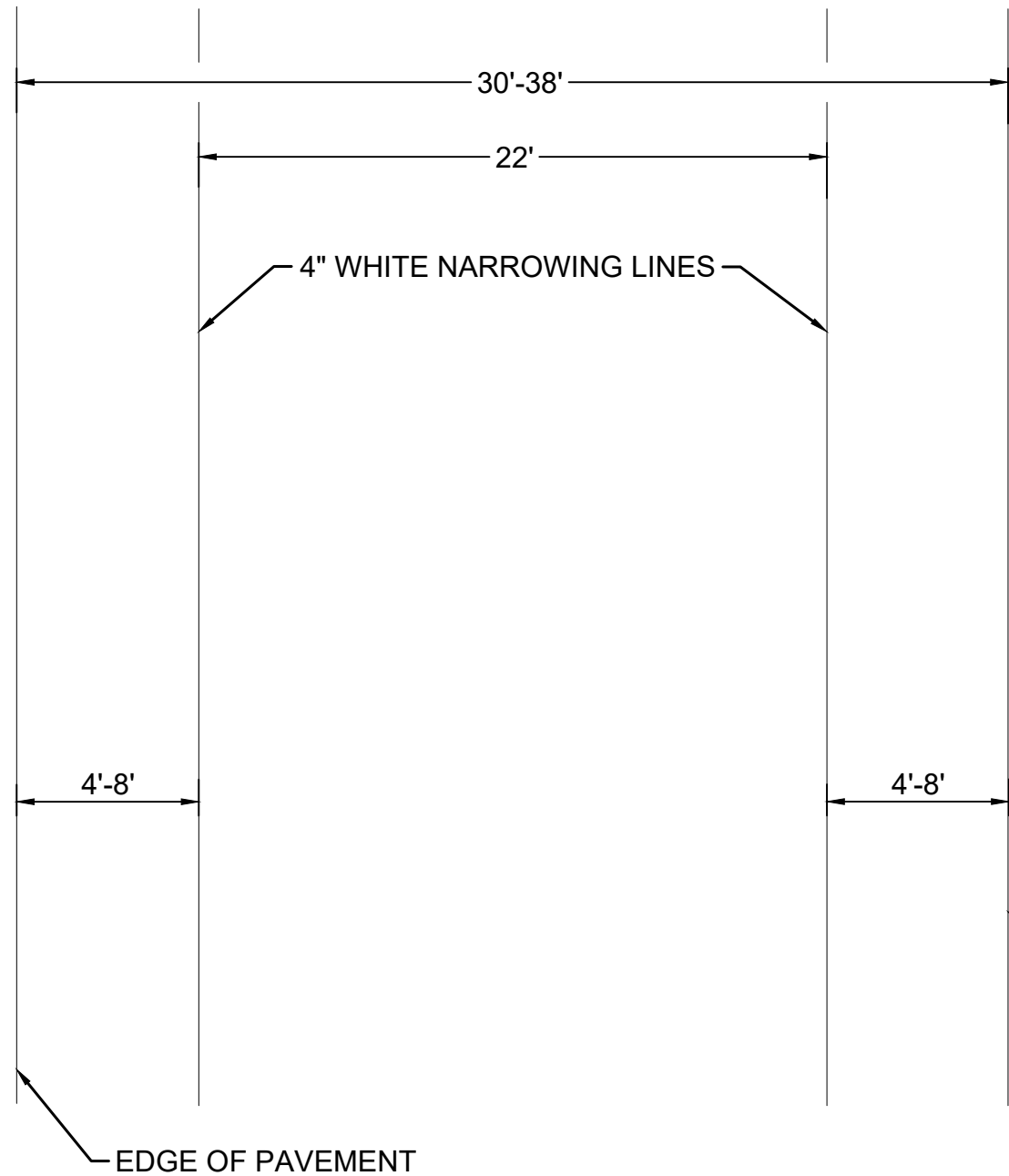
NO.	REVISIONS	DATE	BY
1			
2			
3			
4			
5			
6			
7			
8			
9			
10			

DESIGNED BY: _____
DRAWN BY: EJV
CHECKED BY: NDOT
DATE: 8/31/2022
KIMLEY-HORN PROJECT NO. 11890005

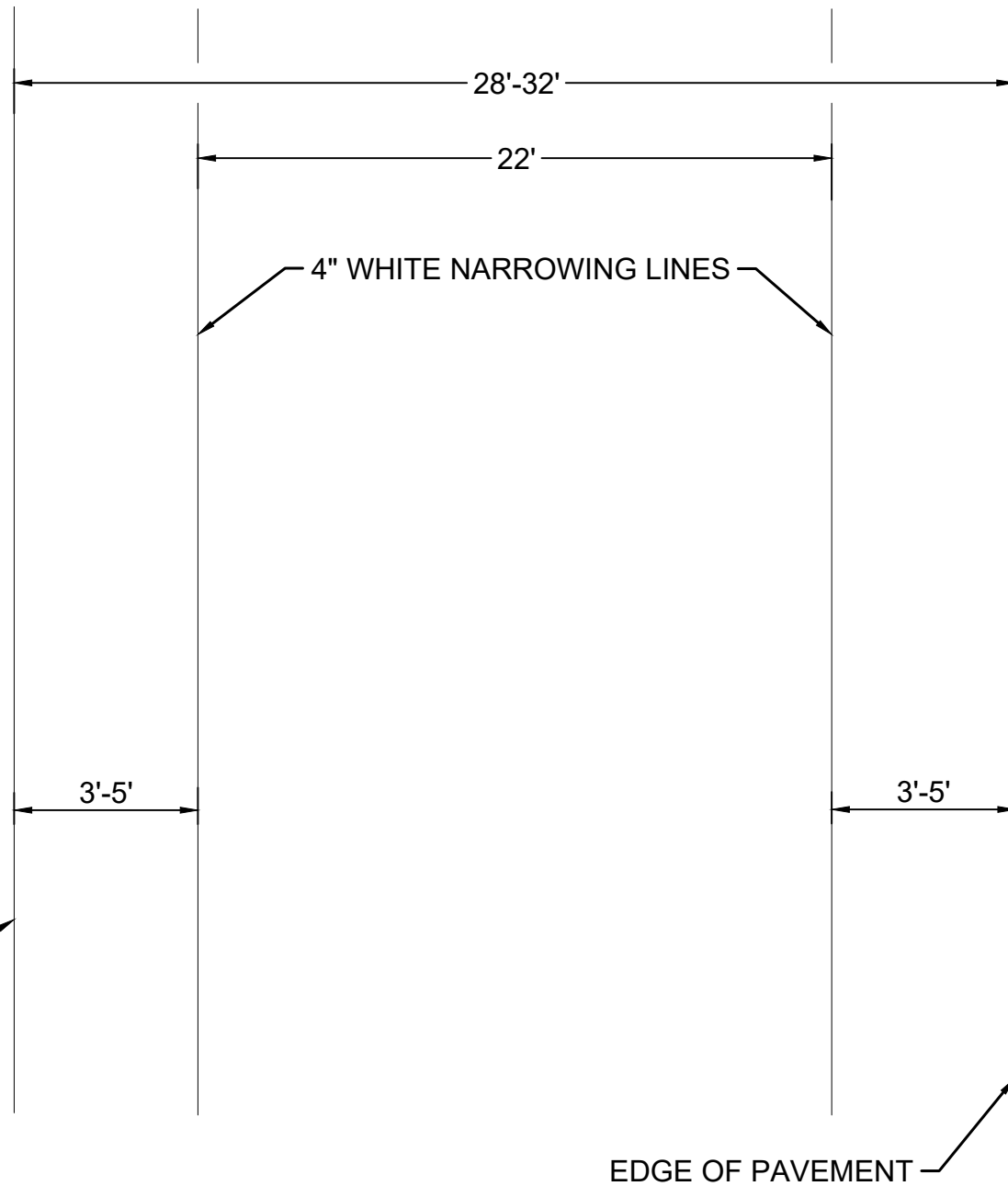


This document, together with the concepts and designs presented herein, is intended only for the specific purpose and client for which it was prepared. Release of and improper reliance on the documents without written authorization and adaptation by Kimley-Horn and Associates, Inc. shall be without liability to Kimley-Horn and Associates, Inc.

**GWYNNWOOD DRIVE:
PAVEMENT MARKING NARROWING**



**W RICHMOND HILL DRIVE, EWINGWOOD DRIVE,
GREGGWOOD DRIVE, EWINGDALE DRIVE:
PAVEMENT MARKING NARROWING**



**GOLDEN VALLEY
TRAFFIC CALMING
NASHVILLE, TN**

**DRAFT
PRELIMINARY
PLANS
FOR REVIEW ONLY**

NO.	REVISIONS	DATE	BY
1			
2			
3			
4			
5			
6			
7			
8			
9			
10			

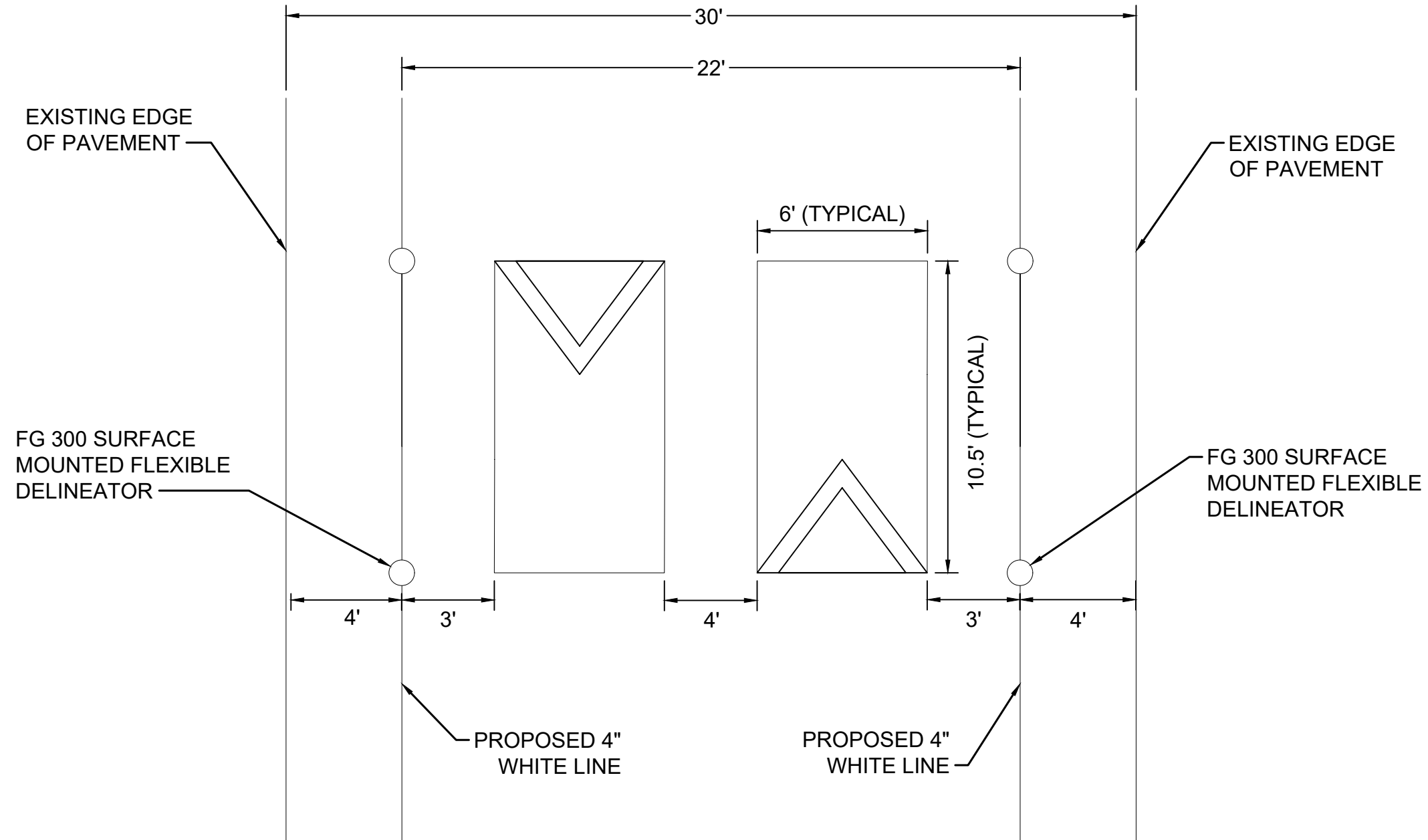
DESIGNED BY: RBW
 DRAWN BY: EJW
 CHECKED BY: NDOT
 DATE: 8/31/2022
 KIMLEY-HORN PROJECT NO. 11890005

CONCEPT PLAN

SHEET NUMBER
11

This document, together with the concepts and designs presented herein, is intended only for the specific purpose and client for which it was prepared. Release of and improper reliance on the documents without written authorization and adaptation by Kimley-Horn and Associates, Inc. shall be without liability to Kimley-Horn and Associates, Inc.

SPEED CUSHION CONFIGURATION A



NO.	REVISIONS	DATE	BY
1			
2			
3			
4			
5			
6			
7			
8			
9			
10			

DESIGNED BY: RBW
 DRAWN BY: EJV
 CHECKED BY: NDOT
 DATE: 8/31/2022
 KIMLEY-HORN PROJECT NO. 11890005

CONCEPT PLAN

SHEET NUMBER
12