

This document, together with the concepts and designs presented herein, is intended only for the specific purpose and client for which it was prepared. Reuse of and improper reliance on this document without written authorization and adaptation by Kimley-Horn and Associates, Inc. shall be without liability to Kimley-Horn and Associates, Inc.

LEGEND

 **SPEED CUSHION**

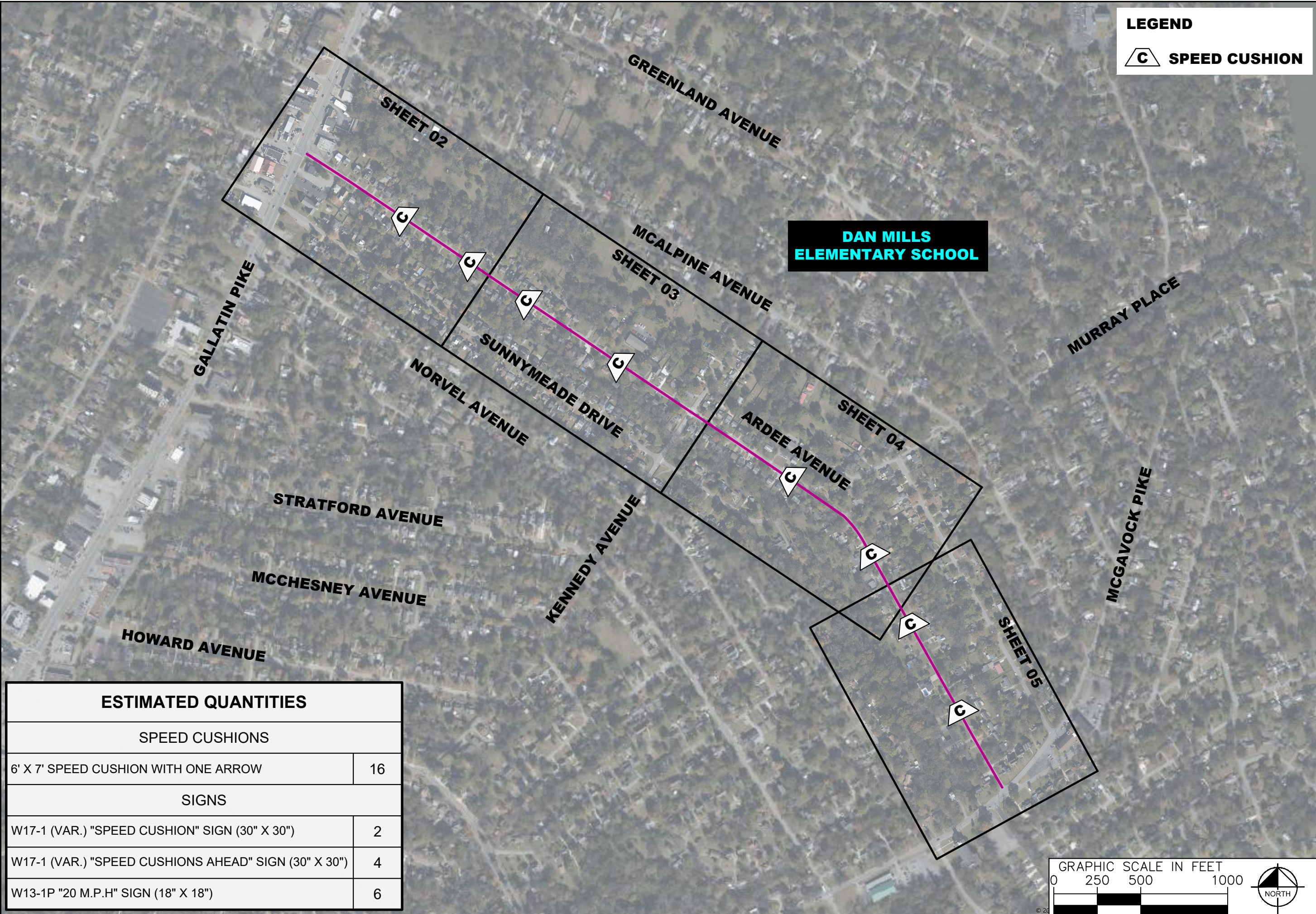


ARDEE AVENUE
TRAFFIC CALMING
NASHVILLE, TN

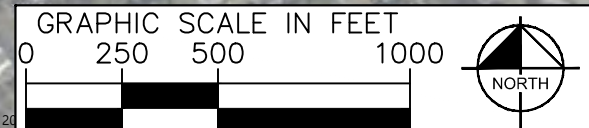


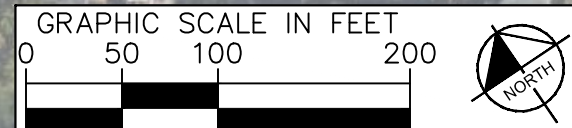
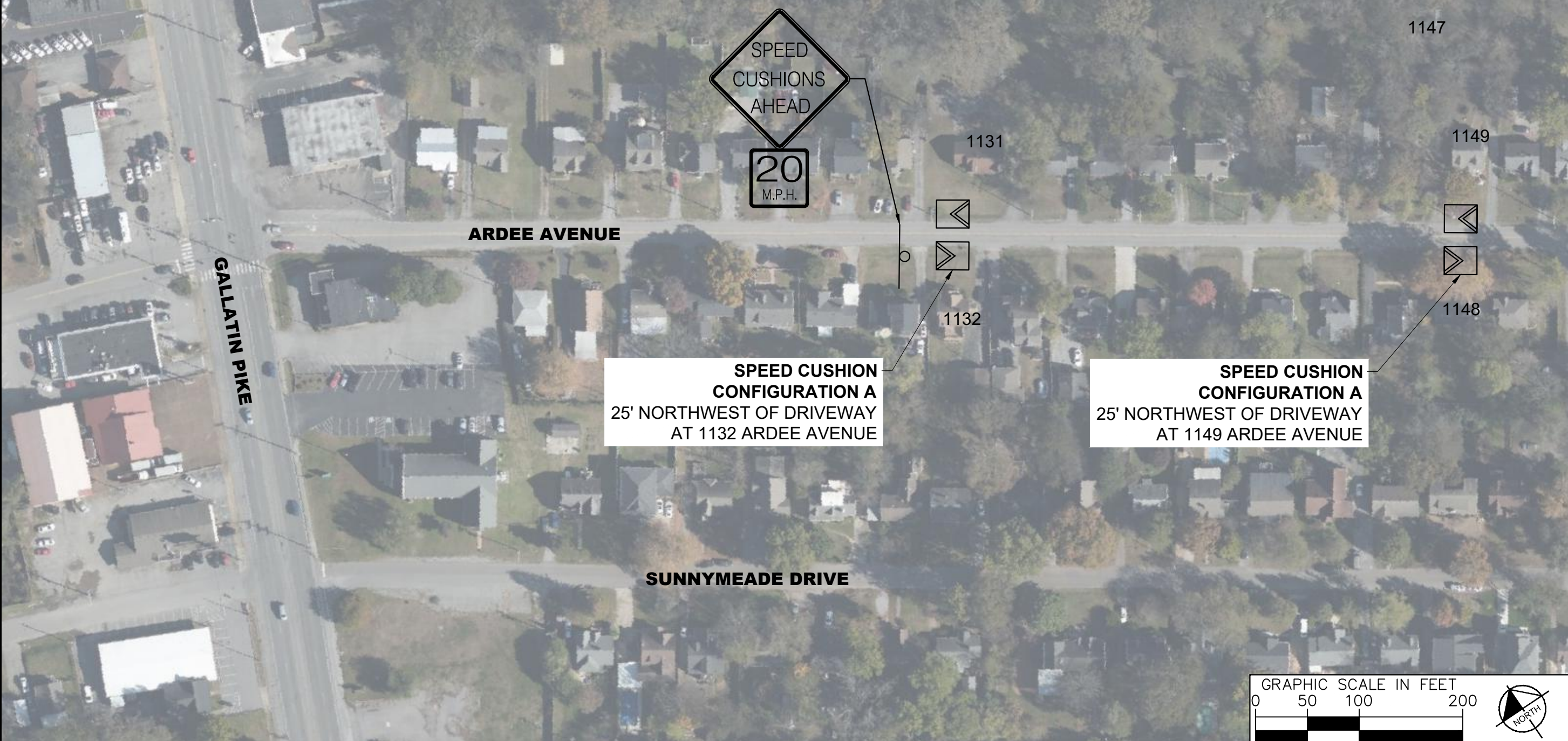
DESIGNED BY:	RBW
DRAWN BY:	SJC
CHECKED BY:	NDOT
DATE:	11/10/2022
KIMLEY-HORN PROJECT NO.	11890030

KEY
SHEET NUMBER
01



ESTIMATED QUANTITIES	
SPEED CUSHIONS	
6' X 7' SPEED CUSHION WITH ONE ARROW	16
SIGNS	
W17-1 (VAR.) "SPEED CUSHION" SIGN (30" X 30")	2
W17-1 (VAR.) "SPEED CUSHIONS AHEAD" SIGN (30" X 30")	4
W13-1P "20 M.P.H" SIGN (18" X 18")	6





DESIGNED BY:	RBW
DRAWN BY:	SJC
CHECKED BY:	NDOT
DATE:	11/10/2022
KIMLEY-HORN PROJECT NO. 11800030	

This document, together with the concepts and designs presented herein, is intended only for the specific purpose and client for which it was prepared. Reuse of and improper reliance on this document without written authorization and adaptation by Kimley-Horn and Associates, Inc. shall be without liability to Kimley-Horn and Associates, Inc.

This document, together with the concepts and designs presented herein, is intended only for the specific purpose and client for which it was prepared. Reuse or improper reliance on this document without written authorization and adaptation by Kimley-Horn and Associates, Inc. shall be without liability to Kimley-Horn and Associates, Inc.



NDOT

**ARDEE AVENUE
TRAFFIC CALMING**
NASHVILLE, TN

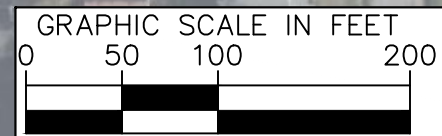


Kimley >> Horn

DESIGNED BY: RBW
DRAWN BY: SJC
CHECKED BY: NDOT
DATE: 11/10/2022
KIMLEY-HORN PROJECT NO. 11800030

CONCEPT PLAN

SHEET NUMBER
03

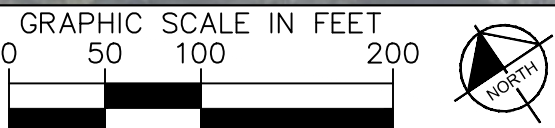


This document, together with the concepts and designs presented herein, is intended only for the specific purpose and client for which it was prepared. Reuse of and improper reliance on this document without written authorization and adaptation by Kimley-Horn and Associates, Inc. shall be without liability to Kimley-Horn and Associates, Inc.

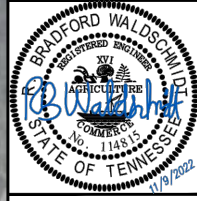


SPEED CUSHION CONFIGURATION A
40' NORTHWEST OF DRIVEWAY
AT 1329 ARDEE AVENUE

SPEED CUSHION CONFIGURATION A
30' SOUTHEAST OF DRIVEWAY
AT 1408 ARDEE AVENUE



ARDEE AVENUE
TRAFFIC CALMING
NASHVILLE, TN



Kimley >> Horn

DESIGNED BY:	RBW
DRAWN BY:	SJC
CHECKED BY:	NDOT
DATE:	11/10/2022
KIMLEY-HORN PROJECT NO.	11860030

CONCEPT PLAN
SHEET NUMBER
04

This document, together with the concepts and designs presented herein, is intended only for the specific purpose and client for which it was prepared. Reuse of and improper reliance on this document without written authorization and adaptation by Kimley-Horn and Associates, Inc. shall be without liability to Kimley-Horn and Associates, Inc.

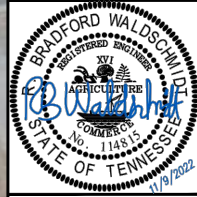


SPEED CUSHION CONFIGURATION A
30' SOUTHEAST OF DRIVEWAY AT 1428 ARDEE AVENUE

SPEED CUSHION CONFIGURATION A
25' NORTHWEST OF DRIVEWAY AT 1445 ARDEE AVENUE



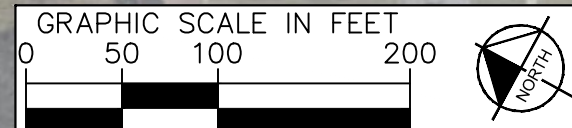
ARDEE AVENUE
TRAFFIC CALMING
NASHVILLE, TN



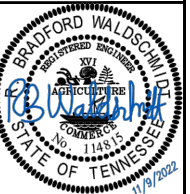
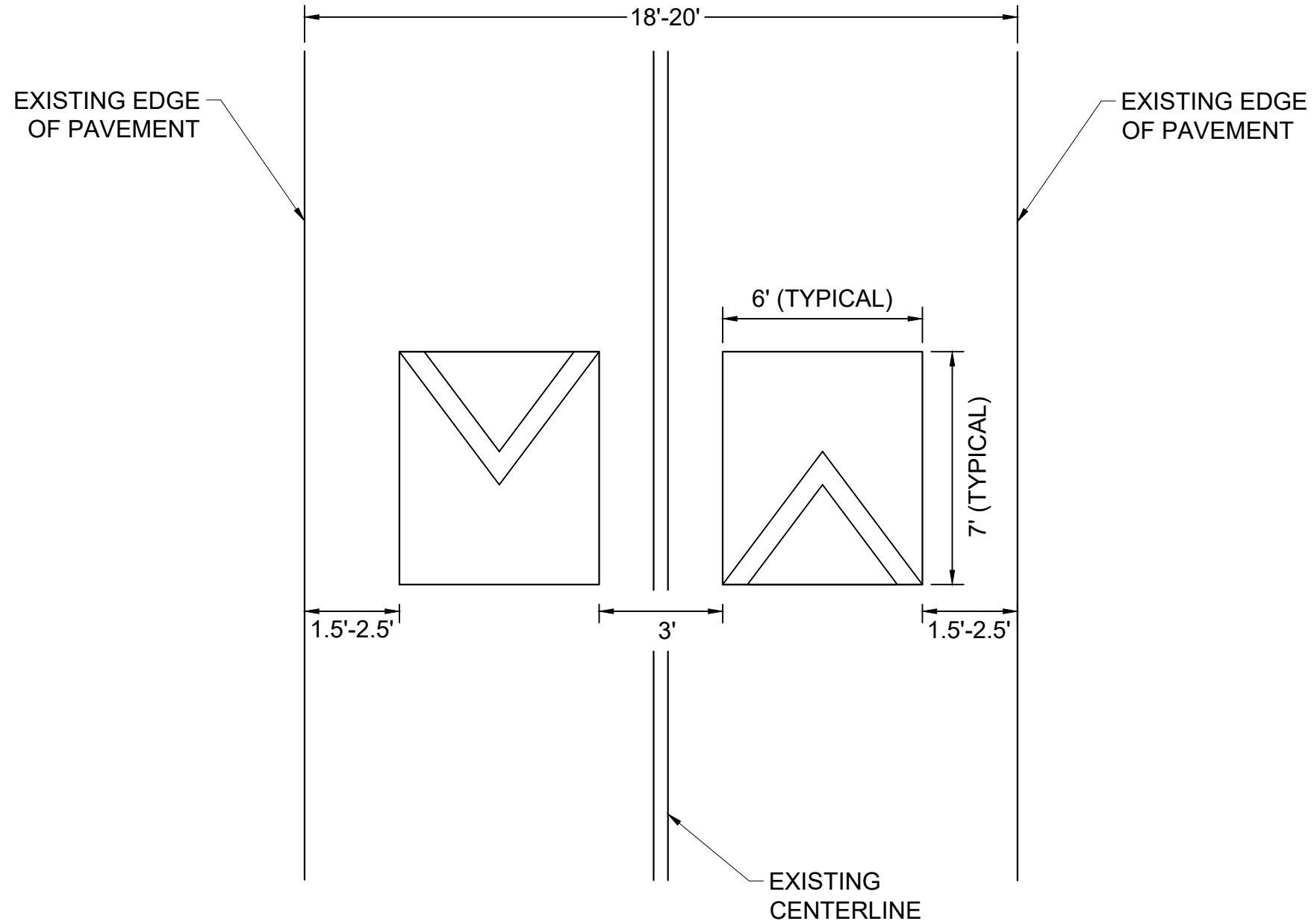
Kimley & Horn

DESIGNED BY:	RBW
DRAWN BY:	SJC
CHECKED BY:	NDOT
DATE:	11/10/2022
KIMLEY-HORN PROJECT NO.	118900030

CONCEPT PLAN
SHEET NUMBER
05



SPEED CUSHION CONFIGURATION A



DESIGNED BY:	RBW
DRAWN BY:	SJC
CHECKED BY:	NDOT
DATE:	11/10/2022
KIMLEY-HORN PROJECT NO. 11880030	

DETAIL

SHEET NUMBER
06

This document, together with the concepts and designs presented herein, is intended only for the specific purpose and client for which it was prepared. Reuse of and improper reliance on this document without written authorization and adaptation by Kimley-Horn and Associates, Inc. shall be without liability to Kimley-Horn and Associates, Inc.