



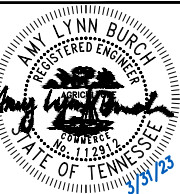
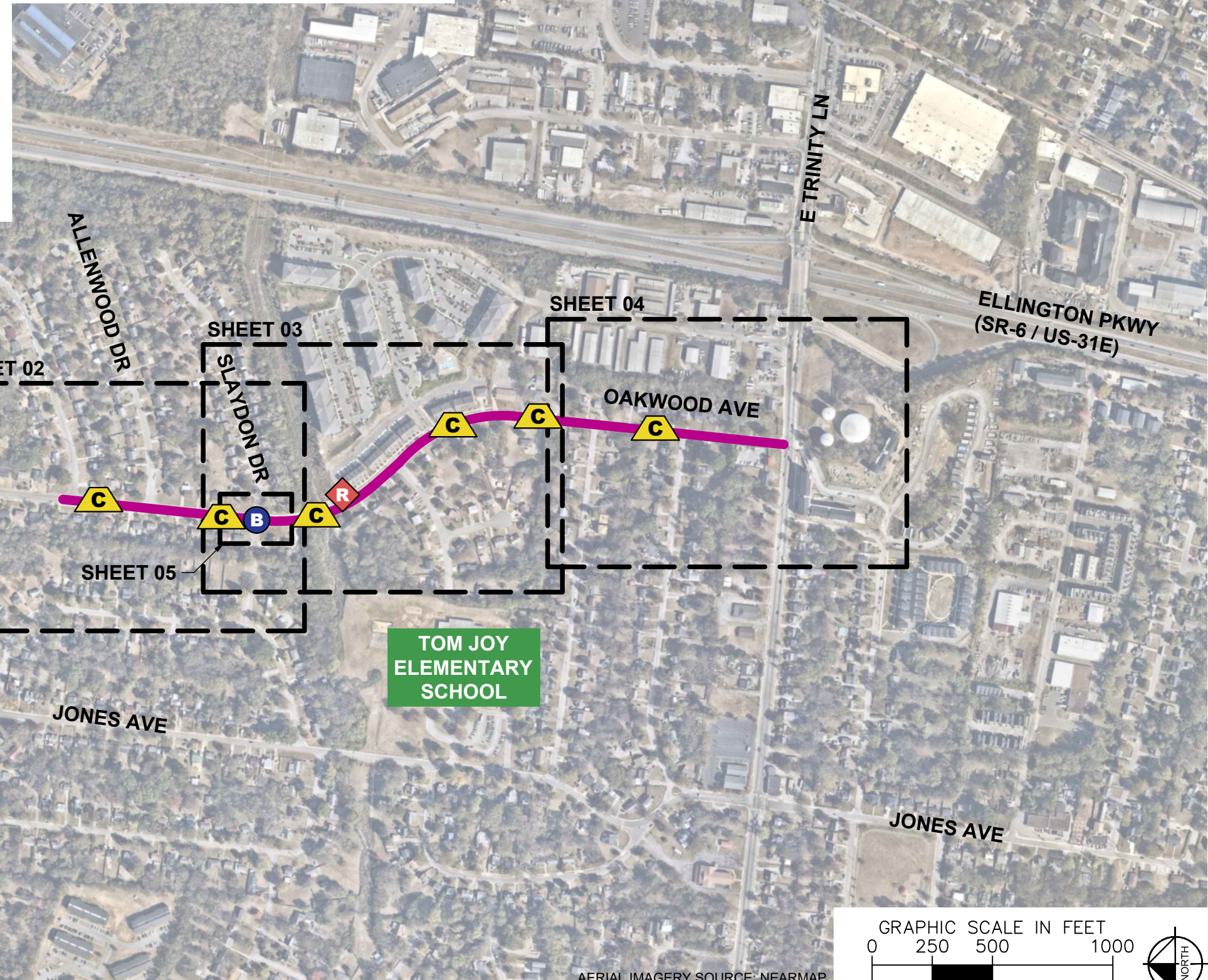


ESTIMATED QUANTITIES

SPEED CUSHIONS	
6' X 10.5' SPEED CUSHION WITH ONE ARROW	12
6' X 10.5' SPEED CUSHION WITH DSYL	4
SIGNING	
W17-1 (VAR.) "SPEED CUSHION" SIGN (30" X 30")	8
W17-1 (VAR.) "SPEED CUSHIONS AHEAD" SIGN (30" X 30")	2
W13-1P "20 M.P.H" SIGN (18" X 18")	10
RADAR FEEDBACK SIGN	1
PAVEMENT MARKINGS AND DELINEATORS	
4" WHITE FLEXIBLE DELINEATOR	62
4" SOLID WHITE LINE (LF)	325
6" SOLID WHITE LINE (LF)	270

LEGEND

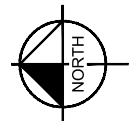
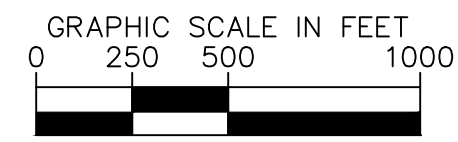
-  LIMITS OF TRAFFIC CALMING PROJECT
-  SPEED CUSHIONS
-  RADAR FEEDBACK SIGN
-  BULB-OUTS



DESIGNED BY:	ALB
DRAWN BY:	DJG
CHECKED BY:	NDOT
DATE:	3/31/2023
KIMLEY-HORN PROJECT NO.	11880005

KEY

SHEET NUMBER
01



AERIAL IMAGERY SOURCE: NEARMAP

This document, together with the concepts and designs presented herein, is intended only for the specific purpose and client for which it was prepared. Reuse of and improper reliance on this document without written authorization and adaptation by Kimley-Horn and Associates, Inc. shall be without liability to Kimley-Horn and Associates, Inc.

This document, together with the concepts and designs presented herein, as an instrument of service, is intended only for the specific purpose and client for which it was prepared. Reuse of and improper reliance on this document without written authorization and adaptation by Kimley-Horn and Associates, Inc. shall be without liability to Kimley-Horn and Associates, Inc.



OAKWOOD PARK

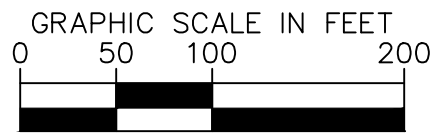
SPEED CUSHION CONFIGURATION D
27' SOUTH OF DRIVEWAY
AT 2507 OAKWOOD AVE

BULB-OUTS
SEE SHEET 05
FOR DETAIL

SPEED CUSHION CONFIGURATION D
20' SOUTH OF DRIVEWAY
AT 2402 OAKWOOD AVE



SPEED CUSHIONS



AERIAL IMAGERY SOURCE: NEARMAP

NDOT

OAKWOOD AVENUE
TRAFFIC CALMING
NASHVILLE, TN



DESIGNED BY:	ALB
DRAWN BY:	DJG
CHECKED BY:	NDOT
DATE:	3/31/2023
KIMLEY-HORN PROJECT NO.:	11890005

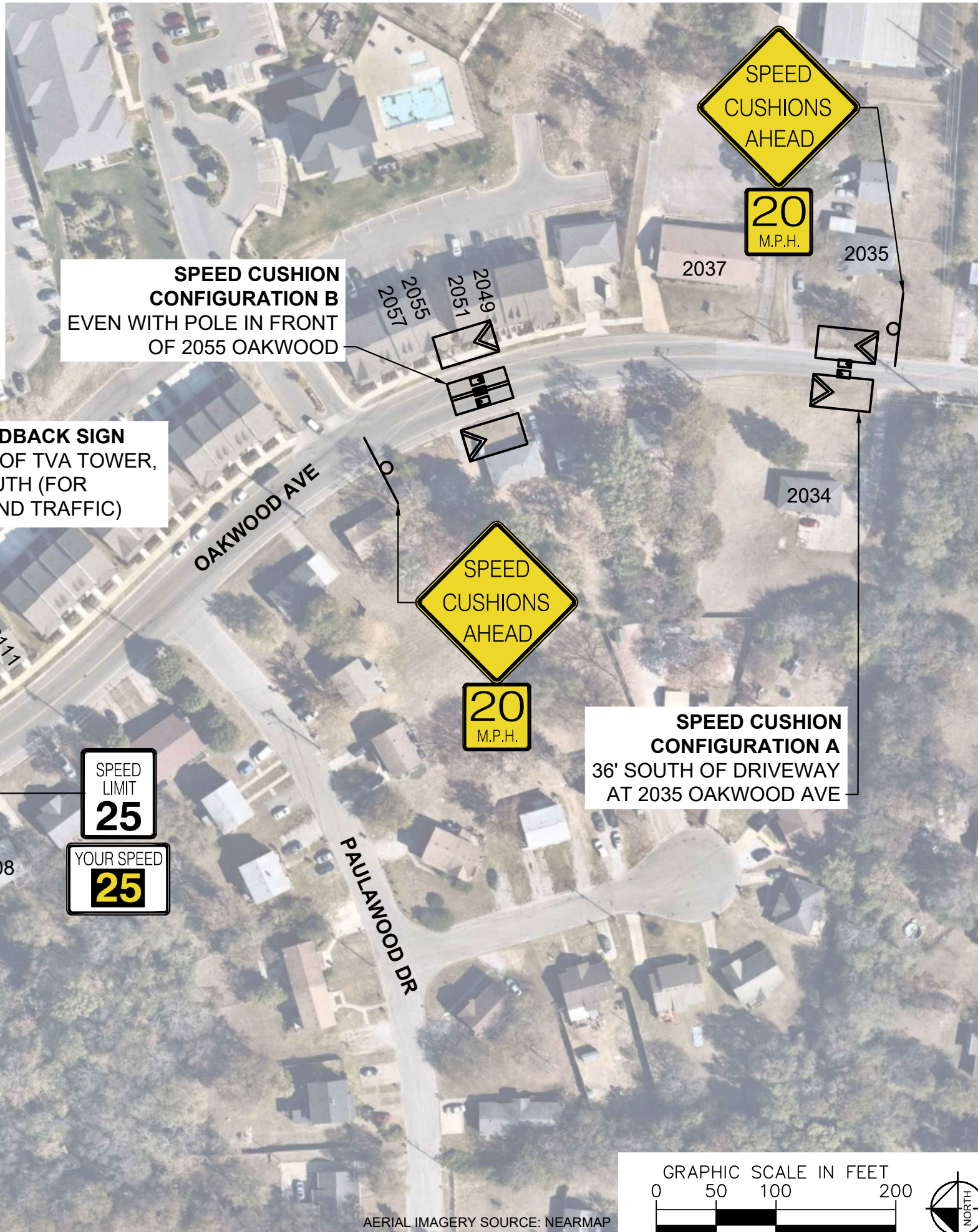
CONCEPT

SHEET NUMBER
02

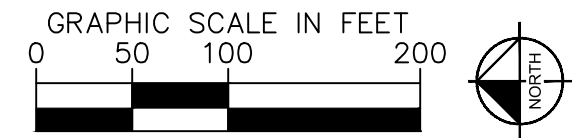
SPEED CUSHIONS



RADAR FEEDBACK SIGN



DESIGNED BY:	ALB
DRAWN BY:	DJG
CHECKED BY:	NDOT
DATE:	3/31/2023
KIMLEY-HORN PROJECT NO. 11880005	



AERIAL IMAGERY SOURCE: NEARMAP

This document, together with the concepts and designs presented herein, is intended only for the specific purpose and client for which it was prepared. Reuse of and improper reliance on this document without written authorization and adaptation by Kimley-Horn and Associates, Inc. shall be without liability to Kimley-Horn and Associates, Inc.



SPEED CUSHIONS

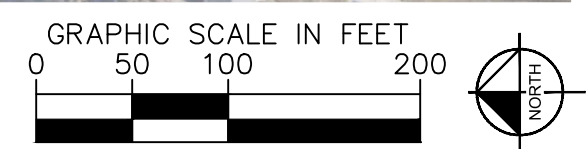
NDOT

OAKWOOD AVENUE
TRAFFIC CALMING
NASHVILLE, TN



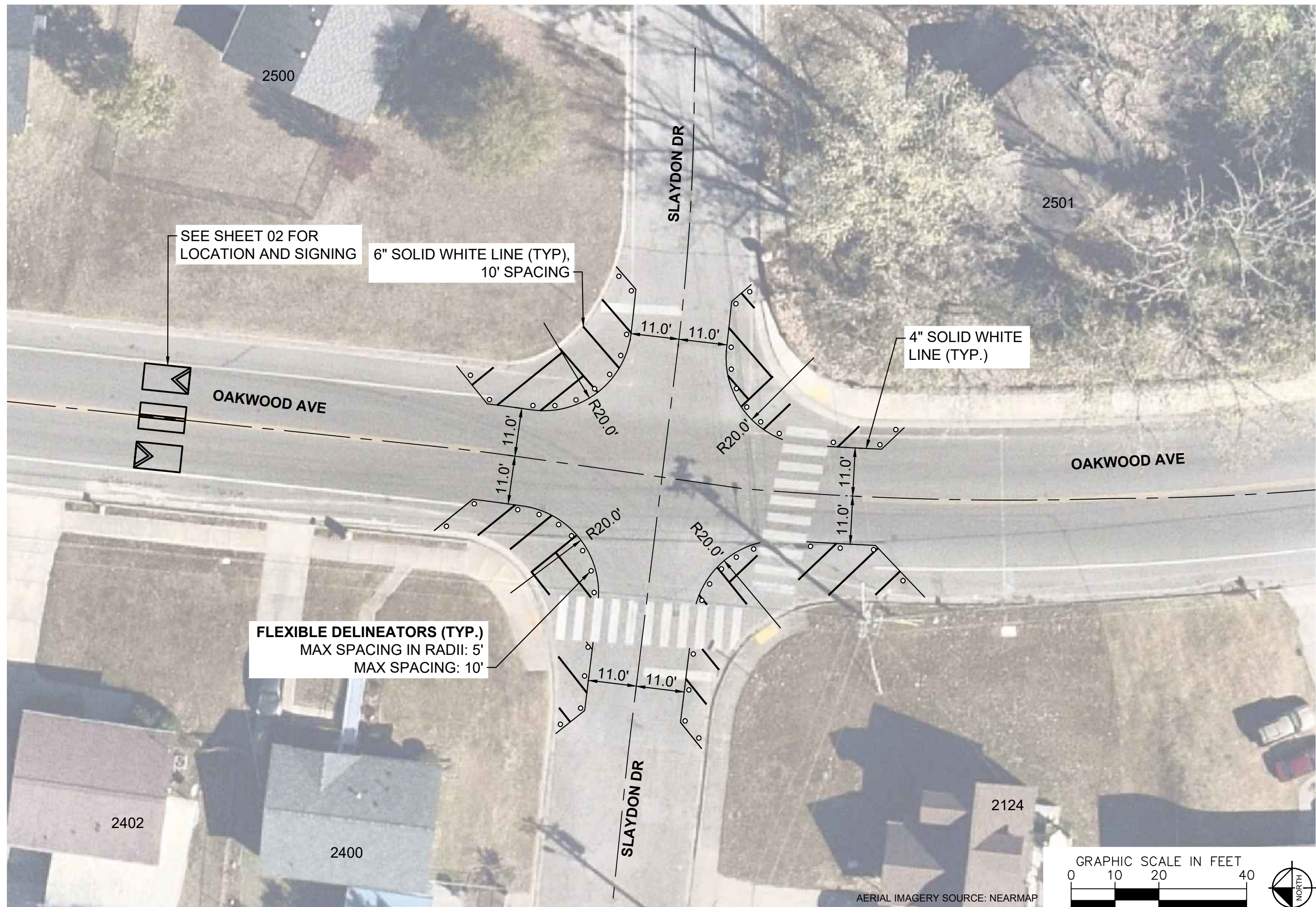
DESIGNED BY:	ALB
DRAWN BY:	DJG
CHECKED BY:	NDOT
DATE:	3/31/2023
KIMLEY-HORN PROJECT NO. 11880005	

CONCEPT
SHEET NUMBER
04



AERIAL IMAGERY SOURCE: NEARMAP

This document, together with the concepts and designs presented herein, is intended only for the specific purpose and client for which it was prepared. Reuse of and improper reliance on this document without written authorization and adaptation by Kimley-Horn and Associates, Inc. shall be without liability to Kimley-Horn and Associates, Inc.

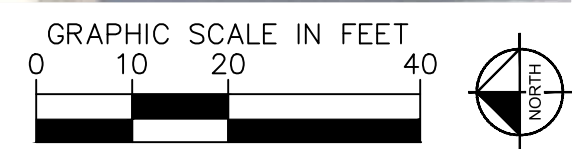


OAKWOOD AVENUE
TRAFFIC CALMING
NASHVILLE, TN



DESIGNED BY:	ALB
DRAWN BY:	DJG
CHECKED BY:	NDOT
DATE:	3/31/2023
KIMLEY-HORN PROJECT NO. 11890005	

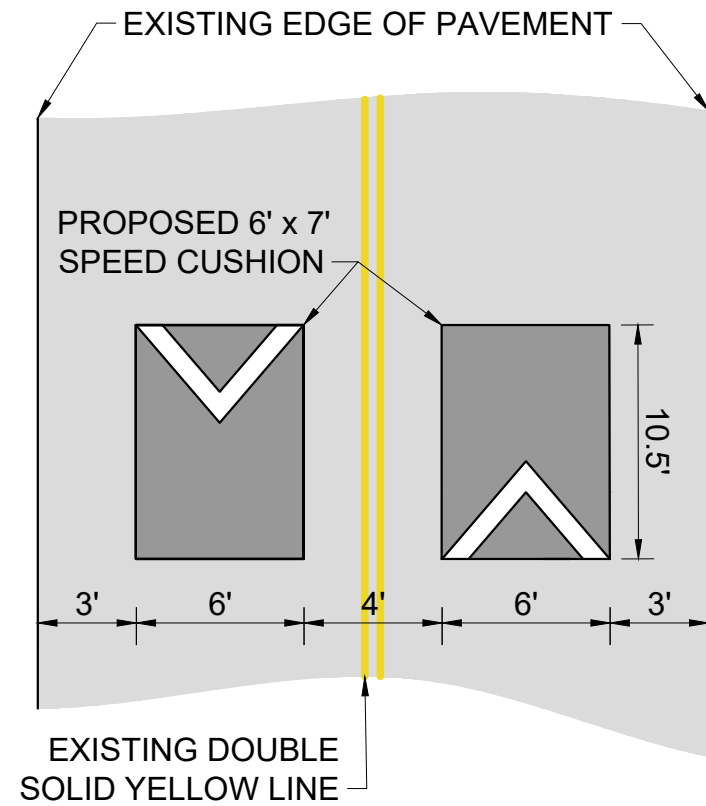
CONCEPT
SHEET NUMBER
05



AERIAL IMAGERY SOURCE: NEARMAP

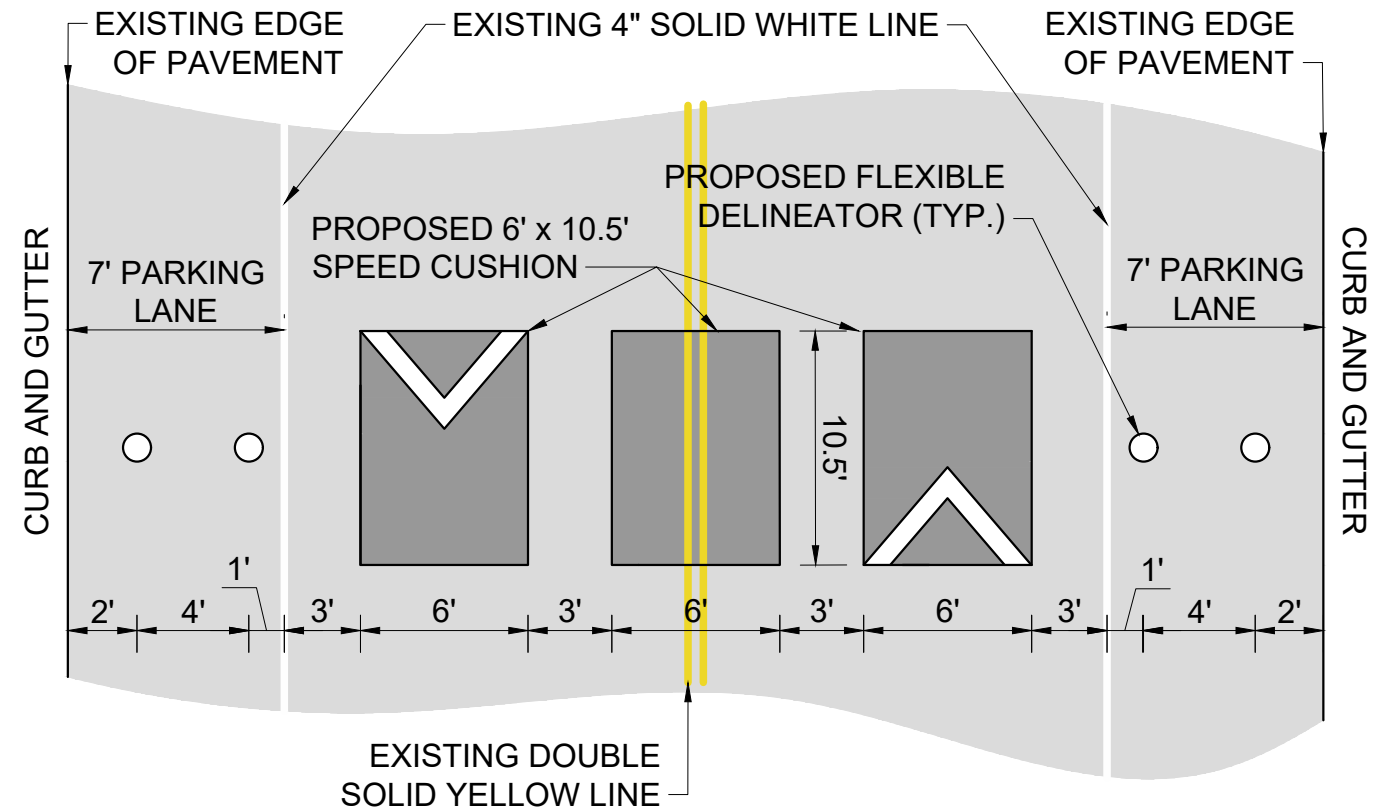
CONFIGURATION A

22' OF PAVEMENT



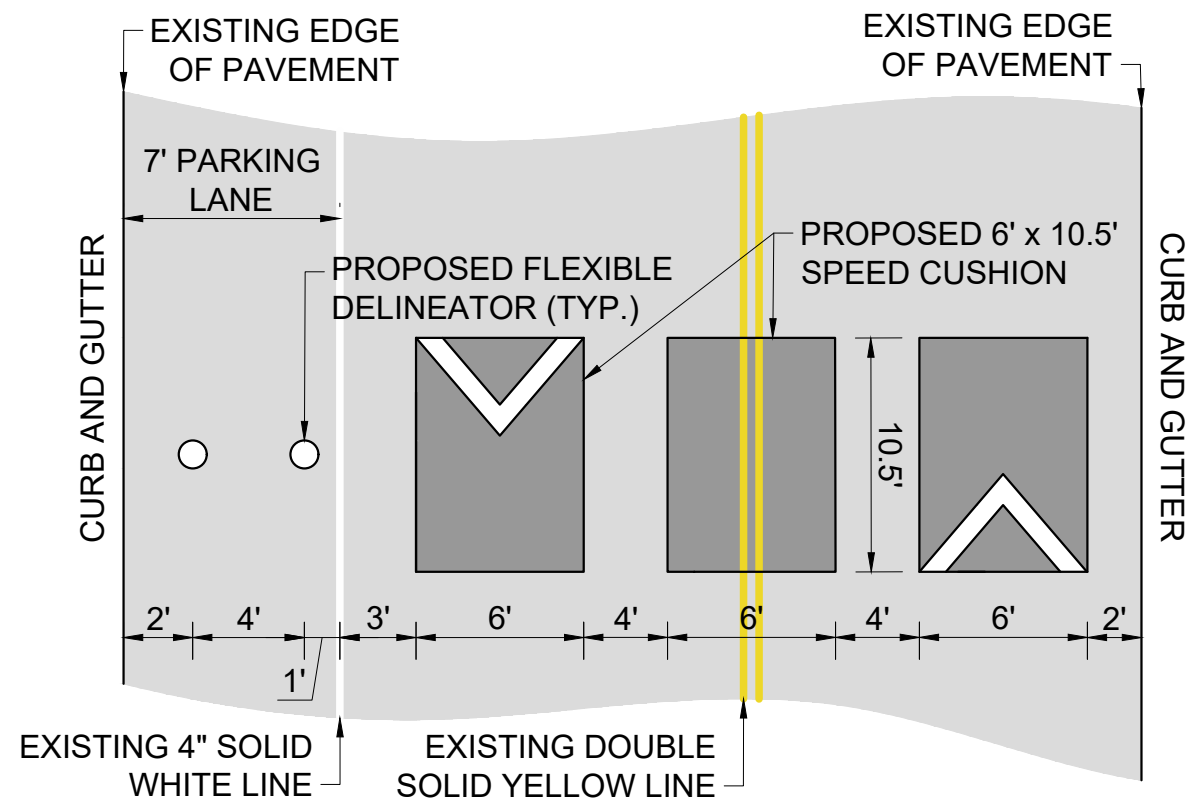
CONFIGURATION B

44' OF PAVEMENT



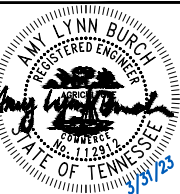
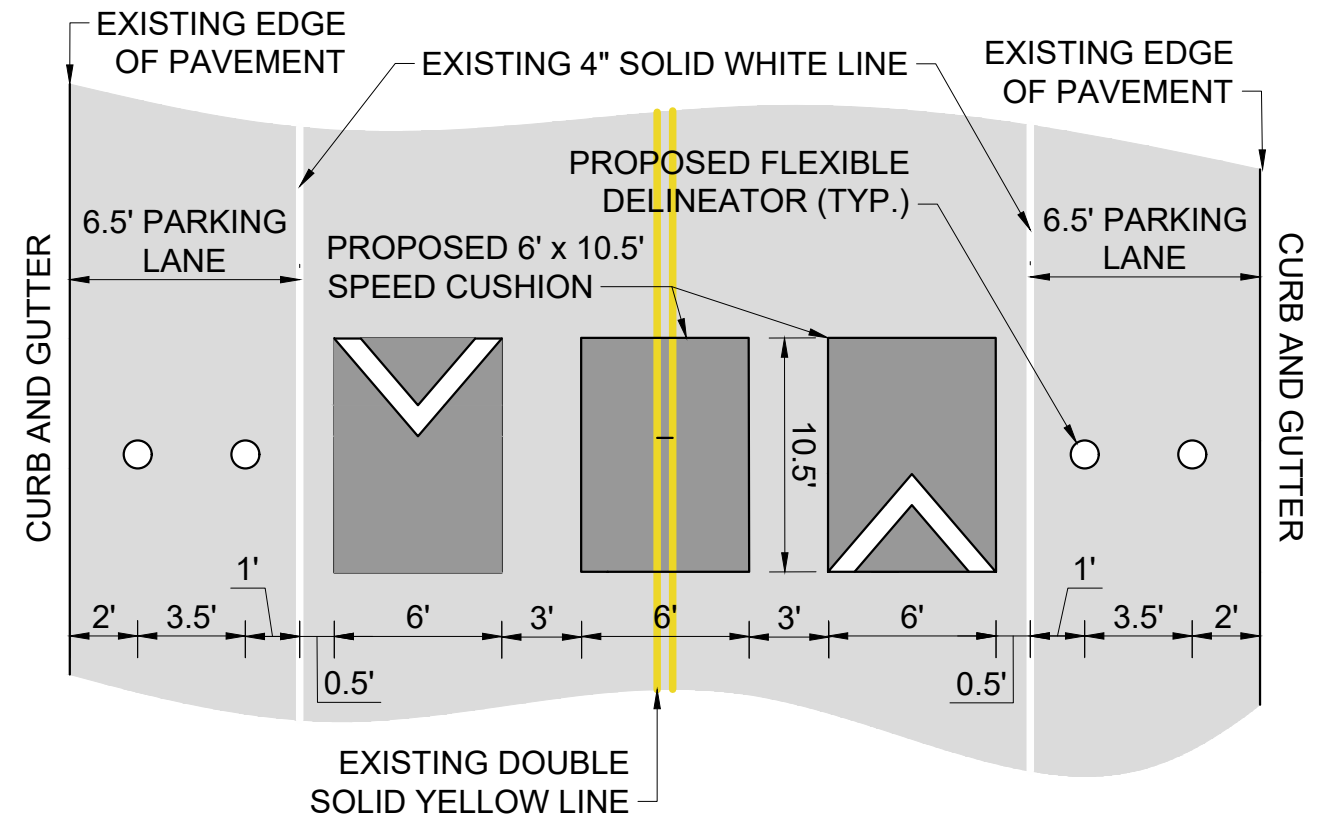
CONFIGURATION C

38' OF PAVEMENT



CONFIGURATION D

38' OF PAVEMENT



DESIGNED BY:	ALB
DRAWN BY:	DJG
CHECKED BY:	NDOT
DATE:	3/31/2023
KIMLEY-HORN PROJECT NO. 11880005	

DETAIL

SHEET NUMBER
06