

### ESTIMATED QUANTITIES

#### SPEED CUSHIONS

6' X 10.5' SPEED CUSHION WITH ONE ARROW	10
6' X 10.5' SPEED CUSHION WITH DSYL	5

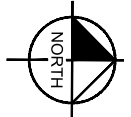
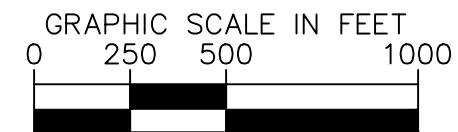
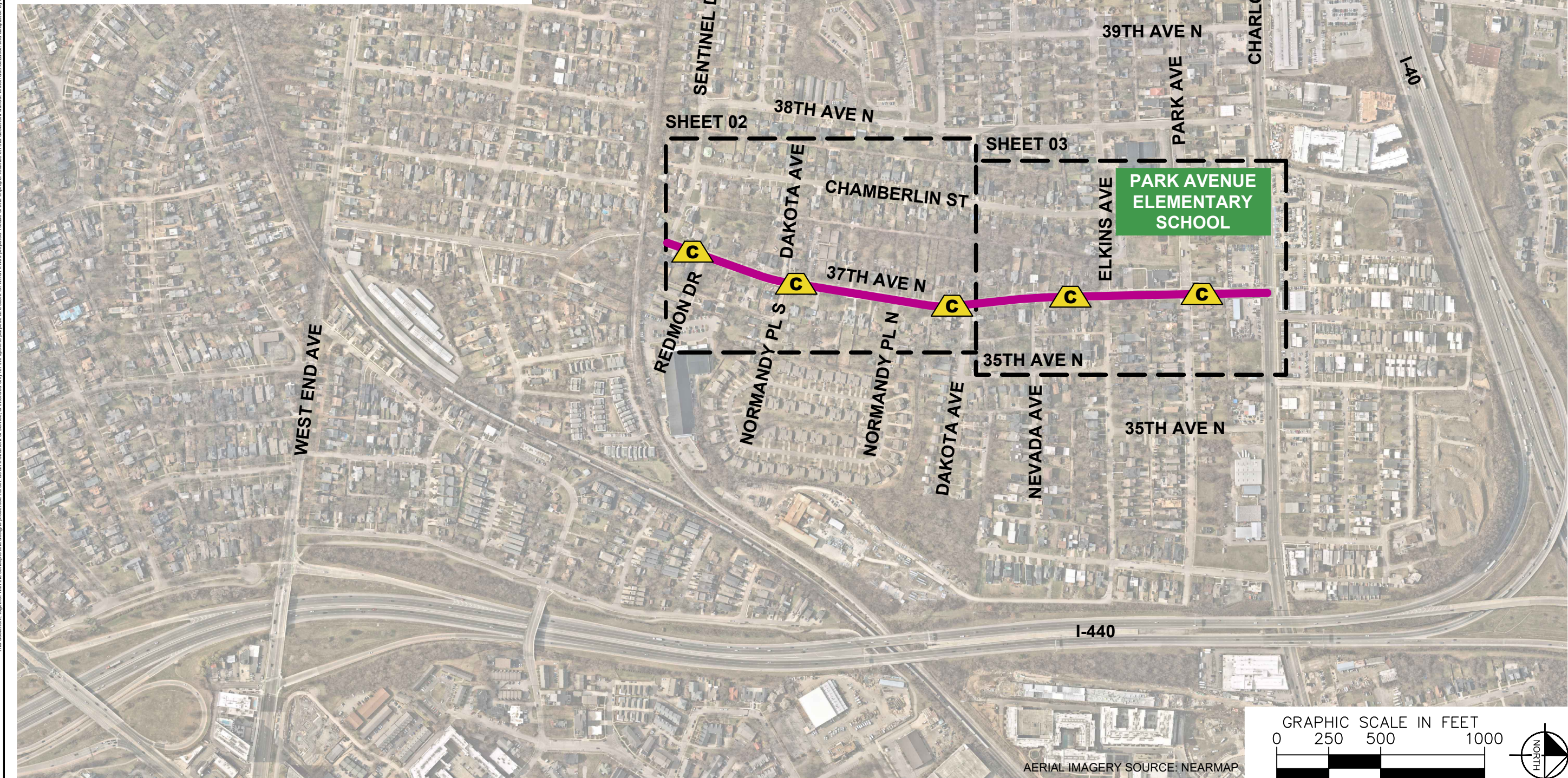
#### SIGNING

W17-1 (VAR.) "SPEED CUSHION" SIGN (30" X 30")	10
W13-1P "20 M.P.H" SIGN (18" X 18")	10

**NOTE:** ALL LOCATIONS ARE REFERENCED FROM CENTERLINE OF DRIVEWAYS OR OTHER LANDMARKS TO THE CENTER OF SPEED CUSHIONS OR SIGNS.

### LEGEND

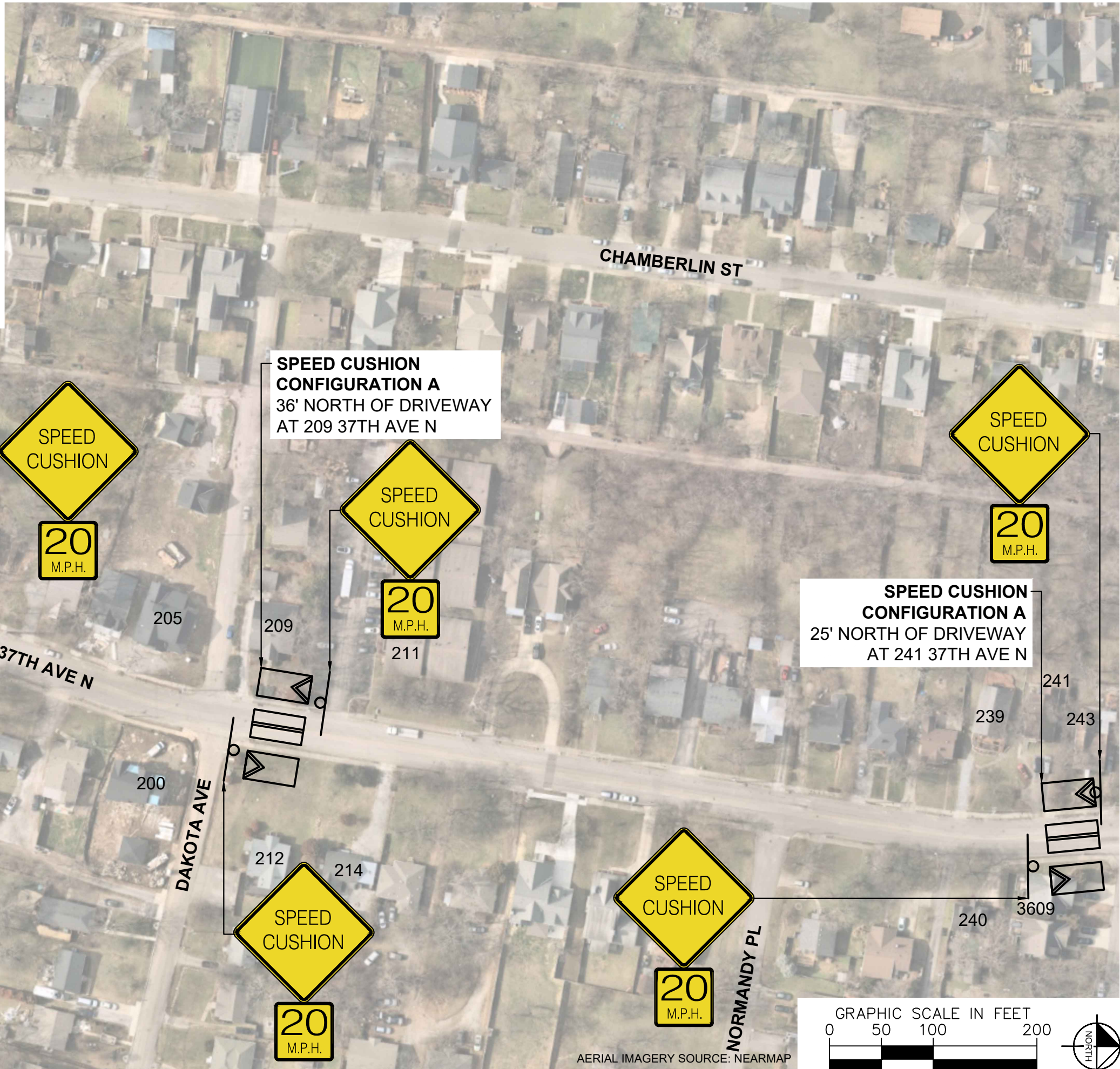
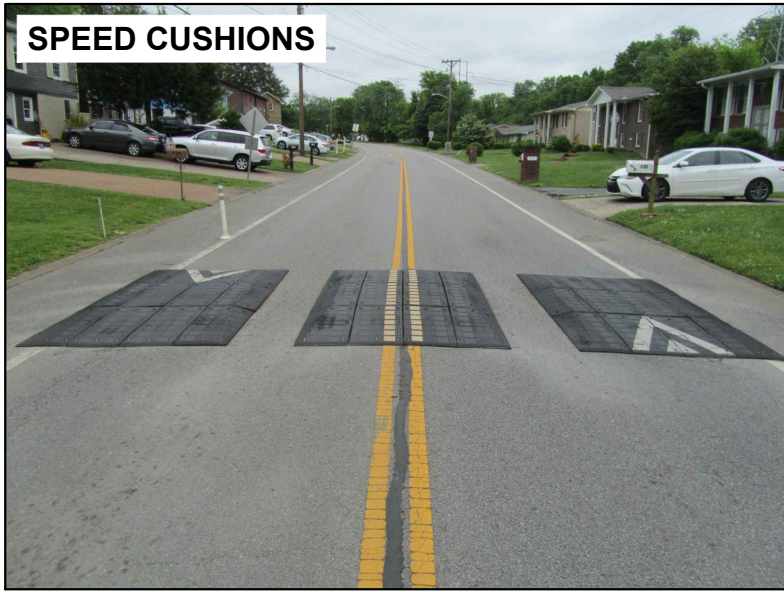
-  LIMITS OF TRAFFIC CALMING PROJECT
-  SPEED CUSHIONS



AERIAL IMAGERY SOURCE: NEARMAP

This document, together with the concepts and designs presented herein, is intended only for the specific purpose and client for which it was prepared. Reuse of and improper reliance on this document without written authorization and adaptation by Kimley-Horn and Associates, Inc. shall be without liability to Kimley-Horn and Associates, Inc.

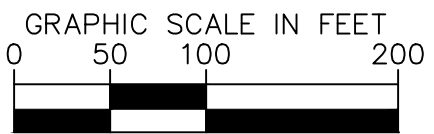
**SPEED CUSHIONS**



**SPEED CUSHION CONFIGURATION A**  
22' SOUTH OF DRIVEWAY  
AT 163 37TH AVE N

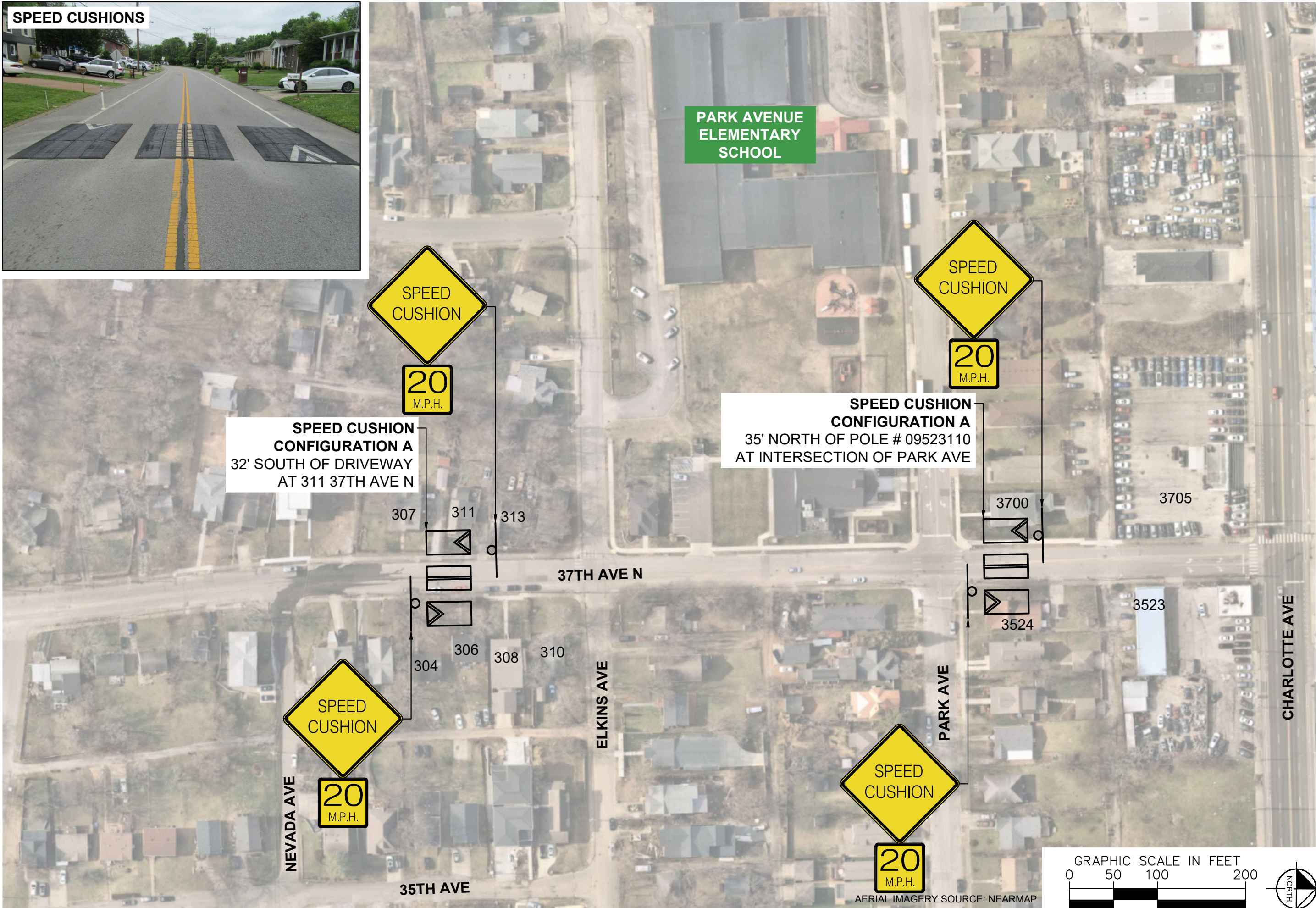
**SPEED CUSHION CONFIGURATION A**  
36' NORTH OF DRIVEWAY  
AT 209 37TH AVE N

**SPEED CUSHION CONFIGURATION A**  
25' NORTH OF DRIVEWAY  
AT 241 37TH AVE N



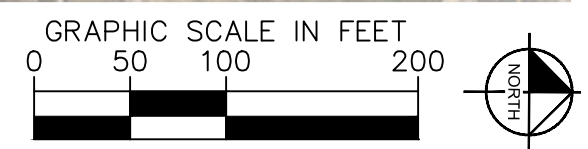
AERIAL IMAGERY SOURCE: NEARMAP

**SPEED CUSHIONS**



**SPEED CUSHION CONFIGURATION A**  
32' SOUTH OF DRIVEWAY  
AT 311 37TH AVE N

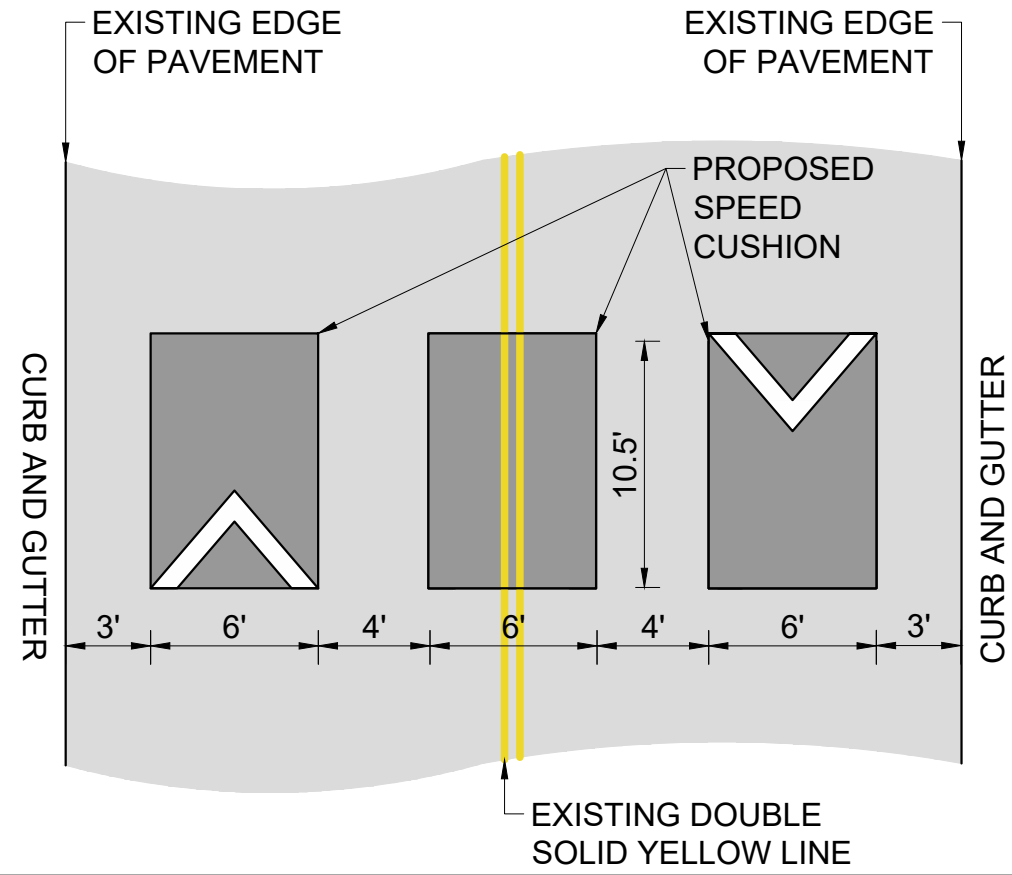
**SPEED CUSHION CONFIGURATION A**  
35' NORTH OF POLE # 09523110  
AT INTERSECTION OF PARK AVE



AERIAL IMAGERY SOURCE: NEARMAP

# CONFIGURATION A

32' OF PAVEMENT



This document, together with the concepts and designs presented herein, is intended only for the specific purpose and client for which it was prepared. Reuse of and improper reliance on this document without written authorization and adaptation by Kimley-Horn and Associates, Inc. shall be without liability to Kimley-Horn and Associates, Inc.