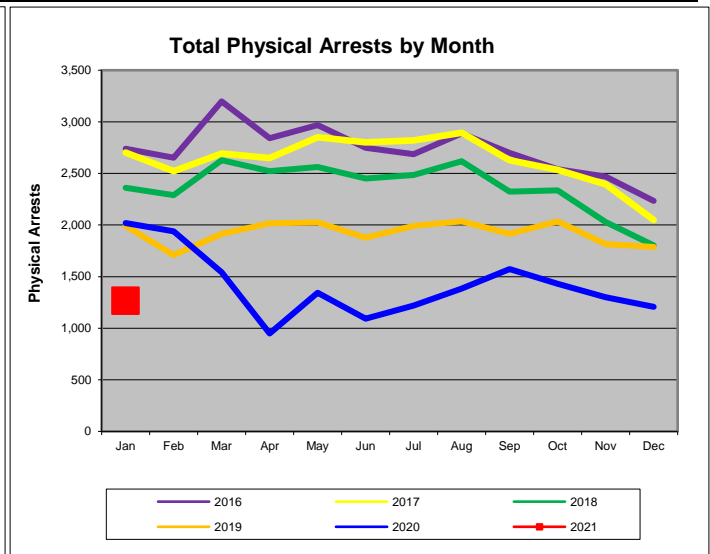
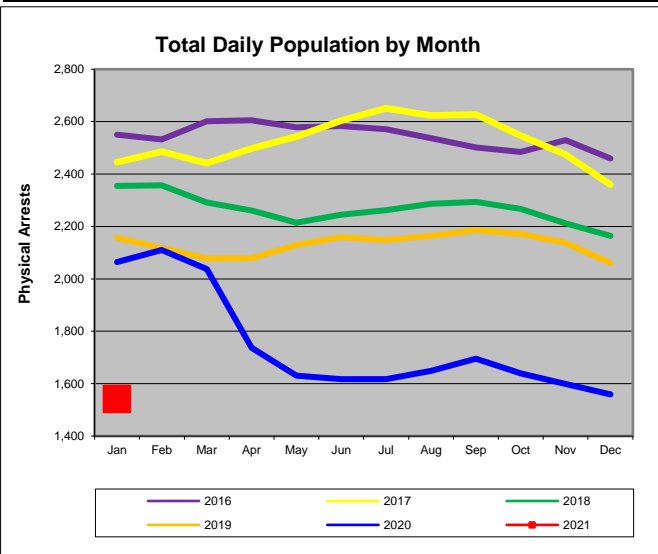


## AVERAGE DAILY POPULATION REPORT Davidson County Correctional Facilities

### Overview of January 2021

1. The ADP in January 2021 was 1,541 which was 1.1% lower than the previous month, and was 25.3% lower than January 2020, when it was 2,064.
2. The ADP for Locally Sentenced Felons (LSF) was 311 in January 2021. That was lower than the previous month (-7.9%), and was 40.0% lower than January 2020 when it was 518.
3. The ADP for the Department of Homeland Security / Immigration and Customs Enforcement (DHS/ICE) detainees was 0.4 in January 2021. That was higher than the previous month ADP of 0.3, and was higher than the ADP of 0.6 (rounded) in January 2020.
4. LSF inmates comprised 20.2% of the ADP, while Pretrial Felons (PTF) made up 53.0% of the ADP in January 2021.
5. The ADP for Pretrial Felons was 817, which was 2.6% higher than the previous month, but was 4.4% lower than the ADP of 855 in January 2020.
6. The ADP for Pretrial Misdemeanants was 45, which was 15.7% lower than the previous month, and was 50.2% lower than the ADP of 90 in January 2020.
7. In January 2021 the ADP for Convicted Misdemeanants & DUIs (CM+DUI) was 98. That was 4.0% higher than the previous month, but was 58.6% lower than the ADP of 237 in January 2020.
8. The average daily male population declined to 1,398 (-0.5%) in January 2021, while the female daily population was 143, down 7.3% below the previous month.
9. All of the Davidson County correctional facilities were below certified capacity during January 2021. The ADP of 1,541 for all facilities was 65.6% of the total system capacity of 2,350 beds.
10. MDF was closed on 12/7/2020, so the capacity for DCSO facilities (excluding MDF) was 65.6% in January 2021 (same as above).
11. There were 1,267 physical arrests made in January 2021. That was 5.0% more than the previous month, but was 37.2% fewer than the arrests made in January 2020.



Disclaimer: All reports and other documents generated by Criminal Justice Planning are based on information drawn from databases owned and maintained by other agencies of state and local government. Therefore, Criminal Justice Planning can not guarantee, or assume responsibility for, the accuracy or completeness of the data or information reflected in any reports or other documents.

## Average Daily Population Summary by Classification

Month 2021	Total ADP			Total ADP by Gender					
	Total	Monthly Change	Change Since Jan	Male	Monthly Change	Change Since Jan	Female	Monthly Change	Change Since Jan
Jan	1,541	-1.1%		1,398	-0.5%		143	-7.3%	
Feb									
Mar									
Apr									
May									
Jun									
Jul									
Aug									
Sep									
Oct									
Nov									
Dec									
<b>AVG</b>	<b>1,541</b>	<b>-1.1%</b>		<b>1,398</b>	<b>-0.5%</b>		<b>143</b>	<b>-7.3%</b>	

Month 2021	PTF	Monthly Change	Change Since Jan	PTM	Monthly Change	Change Since Jan	CM+DUI	Monthly Change	Change Since Jan
Jan	817	2.6%		45	-15.7%		98	4.0%	
Feb									
Mar									
Apr									
May									
Jun									
Jul									
Aug									
Sep									
Oct									
Nov									
Dec									
<b>AVG</b>	<b>817</b>	<b>2.6%</b>		<b>45</b>	<b>-15.7%</b>		<b>98</b>	<b>4.0%</b>	

<b>ADP</b>	Average Daily Population
<b>PTF</b>	Pretrial Felons
<b>PTM</b>	Pretrial Misdemeanants
<b>CM+DUI</b>	Convicted Misdemeanants including DUI's

Notes:

\*Classification and gender subtotals may not sum to the monthly total due to rounding.

Source: "Average Daily Population of Detention Facilities", Davidson County Sheriff's Office.

## Average Daily Population Summary by Classification

Month 2021	LSF	Monthly Change	Change Since Jan	PVF	Monthly Change	Change Since Jan
Jan	311	-7.9%		108	-2.2%	
Feb						
Mar						
Apr						
May						
Jun						
Jul						
Aug						
Sep						
Oct						
Nov						
Dec						
<b>AVG</b>	<b>311</b>	<b>-7.9%</b>		<b>108</b>	<b>-2.2%</b>	

Month 2021	PVM	Monthly Change	Change Since Jan	OTHER (a)	Monthly Change	Change Since Jan	DHS/ICE (b)	Monthly Change	Change Since Jan
Jan	18	-11.4%		143	-2.1%		0.4	10.0%	
Feb									
Mar									
Apr									
May									
Jun									
Jul									
Aug									
Sep									
Oct									
Nov									
Dec									
<b>AVG</b>	<b>18</b>	<b>-11.4%</b>		<b>143</b>	<b>-2.1%</b>		<b>0.4</b>	<b>10.0%</b>	

<b>LSF</b>	Locally Sentenced Felons
<b>PVF</b>	Probation Violators, Felony
<b>PVM</b>	Probation Violators, Misdemeanor
<b>OTHER</b>	All other classifications
<b>DHS/ICE</b>	Detained for U.S. Department of Homeland Security/Immigration and Customs Enforcement

Notes:

\*Classification and gender subtotals may not sum to the monthly total due to rounding.

(a) Other classifications include the following charge classes: CIVCON, SPARVIO, STATESPL, STATE, FED (with no active immigration charge), GOVERNOR, NONE, NULL (with no active charges, ICE Detainer or Custody Holds).

(b) The Sheriff's office began screening for legal immigration status in mid-April 2007. The number in the table represents: (1) inmates who have no active local charges and are being held on a 48-hour ICE Detainer, (2) inmates who have no active local charges and are being held on a DHS/ICE Custody Hold, and (3) inmates who have only an active immigration charge. \*Effective 10/8/2012, DCSO announced the end of the 287(g) program. Effective 12/1/2019, DCSO announced it will no longer contract to house Immigration and Customs Enforcement (ICE) detainees.

Source: "Average Daily Population of Detention Facilities", Davidson County Sheriff's Office.

**Percent of Population by Classification  
Including LSF Inmates**

**THESE TABLES INCLUDE LOCALLY SENTENCED FELONS**

Month 2021	ADP	PTF	PTM	CM/DUI	LSF	PVF	PVM	OTHER (a)	DHS/ICE (b)
Jan	1,541	53.0%	2.9%	6.4%	20.2%	7.0%	1.2%	9.3%	0.0%
Feb									
Mar									
Apr									
May									
Jun									
Jul									
Aug									
Sep									
Oct									
Nov									
Dec									
<b>AVG</b>	<b>1,541</b>	<b>53.0%</b>	<b>2.9%</b>	<b>6.4%</b>	<b>20.2%</b>	<b>7.0%</b>	<b>1.2%</b>	<b>9.3%</b>	<b>0.0%</b>

Month 2021	ADP	Percent Change	
		Monthly	Since Jan
Jan	1,541	0.0%	
Feb			
Mar			
Apr			
May			
Jun			
Jul			
Aug			
Sep			
Oct			
Nov			
Dec			

Notes:

(a) Other classifications include the following charge classes: CIVCON, SPARVIO, STATESPL, STATE, FED (with no active immigration charge), GOVERNOR, NONE, NULL (with no active charges, ICE Detainer or Custody Holds).

(b) The Sheriff's office began screening for legal immigration status in mid-April 2007. The number in the table represents: (1) inmates who have no active local charges and are being held on a 48-hour ICE Detainer, (2) inmates who have no active local charges and are being held on a DHS/ICE Custody Hold, and (3) inmates who have only an active immigration charge. \*Effective 10/8/2012, DCSO announced the end of the 287(g) program. Effective 12/1/2019, DCSO announced it will no longer contract to house Immigration and Customs Enforcement (ICE) detainees.

Source: "Average Daily Population of Detention Facilities", Davidson County Sheriff's Office.

## Percent of Population by Classification Excluding LSF Inmates

THESE TABLES **EXCLUDE** LOCALLY SENTENCED FELONS

Month 2021	ADP	PTF	PTM	CM/DUI	PVF	PVM	OTHER (a)	DHS/ICE (b)
Jan	1,230	66.4%	3.6%	8.0%	8.8%	1.5%	11.6%	0.0%
Feb								
Mar								
Apr								
May								
Jun								
Jul								
Aug								
Sep								
Oct								
Nov								
Dec								
<b>AVG</b>	<b>1,230</b>	<b>66.4%</b>	<b>3.6%</b>	<b>8.0%</b>	<b>8.8%</b>	<b>1.5%</b>	<b>11.6%</b>	<b>0.0%</b>

Month 2021	ADP	Percent Change	
		Monthly	Since Jan
Jan	1,230	3.7%	
Feb			
Mar			
Apr			
May			
Jun			
Jul			
Aug			
Sep			
Oct			
Nov			
Dec			

Notes:

(a) Other classifications include the following charge classes: CIVCON, SPARVIO, STATESPL, STATE, FED (with no active immigration charge), GOVERNOR, NONE, NULL (with no active charges, ICE Detainer or Custody Holds).

(b) The Sheriff's office began screening for legal immigration status in mid-April 2007. The number in the table represents: (1) inmates who have no active local charges and are being held on a 48-hour ICE Detainer, (2) inmates who have no active local charges and are being held on a DHS/ICE Custody Hold, and (3) inmates who have only an active immigration charge. \*Effective 10/8/2012, DCSO announced the end of the 287(g) program. Effective 12/1/2019, DCSO announced it will no longer contract to house Immigration and Customs Enforcement (ICE) detainees.

Source: "Average Daily Population of Detention Facilities", Davidson County Sheriff's Office.

**Percent Change in the Average Daily Population from Current Year to Previous Year**

Month	ADP			PTF			PTM		
	2020	2021	% Change	2020	2021	% Change	2020	2021	% Change
Jan	2,064	1,541	-25.3%	855	817	-4.4%	90	45	-50.2%
Feb	2,110			856			92		
Mar	2,038			836			81		
Apr	1,737			781			49		
May	1,630			746			48		
Jun	1,617			713			45		
Jul	1,618			720			48		
Aug	1,649			752			42		
Sep	1,695			784			48		
Oct	1,639			792			51		
Nov	1,598			795			54		
Dec	1,559			796			53		
<b>Avg</b>	<b>1,746</b>	<b>1,541</b>	<b>-25.3%</b>	<b>785</b>	<b>817</b>	<b>-4.4%</b>	<b>58</b>	<b>45</b>	<b>-50.2%</b>
<b>% Change Curr Yr to Prev Yr</b>			<b>-11.7%</b>			<b>4.0%</b>			<b>-23.4%</b>

Month	CM+DUI			LSF			PVF		
	2020	2021	% Change	2020	2021	% Change	2020	2021	% Change
Jan	237	98	-58.6%	518	311	-40.0%	167	108	-35.0%
Feb	252			527			156		
Mar	221			513			139		
Apr	118			461			110		
May	101			427			92		
Jun	114			398			113		
Jul	104			372			129		
Aug	113			359			128		
Sep	101			368			131		
Oct	102			361			110		
Nov	106			353			120		
Dec	95			338			111		
<b>Avg</b>	<b>139</b>	<b>98</b>	<b>-58.6%</b>	<b>416</b>	<b>311</b>	<b>-40.0%</b>	<b>125</b>	<b>108</b>	<b>-35.0%</b>
<b>% Change Curr Yr to Prev Yr</b>			<b>-29.1%</b>			<b>-25.3%</b>			<b>-13.7%</b>

Month	PVM			Other (a)			DHS/ICE (b)		
	2020	2021	% Change	2020	2021	% Change	2020	2021	% Change
Jan	42	18	-55.9%	155	143	-7.8%	0.6	0.4	-42.1%
Feb	35			193			0.4		
Mar	38			209			0.6		
Apr	22			195			0.4		
May	19			197			0.5		
Jun	21			212			0.4		
Jul	19			224			0.4		
Aug	28			226			0.6		
Sep	36			229			0.3		
Oct	26			196			0.7		
Nov	19			152			0.5		
Dec	21			146			0.3		
<b>Avg</b>	<b>27</b>	<b>18</b>	<b>-55.9%</b>	<b>195</b>	<b>143</b>	<b>-7.8%</b>	<b>0.5</b>	<b>0.4</b>	<b>-42.1%</b>
<b>% Change Curr Yr to Prev Yr</b>			<b>-32.2%</b>			<b>-26.4%</b>			<b>-26.8%</b>

ADP	Average Daily Population		
PTF	Pretrial Felons	PTM	Pretrial Misdemeanants
CM+DUI	Convicted Misdemeanants including DUI's	LSF	Locally Sentenced Felons
PVF	Probation Violators, Felony	PVM	Probation Violators, Misdemeanor
OTHER	All other classifications		
DHS/ICE	Detained for U.S. Department of Homeland Security/Immigration and Customs Enforcement		

**Notes:**

(a) Other classifications include the following charge classes: CIVCON, SPARVIO, STATESPL, STATE, FED (with no active immigration charge), GOVERNOR, NONE, NULL (with no active charges, ICE Detainer or Custody Holds).

(b) The Sheriff's office began screening for legal immigration status in mid-April 2007. The number in the table represents: (1) inmates who have no active local charges and are being held on a 48-hour ICE Detainer, (2) inmates who have no active local charges and are being held on a DHS/ICE Custody Hold, and (3) inmates who have only an active immigration charge. \*Effective 10/8/2012, DCSSO announced the end of the 287(g) program. Effective 12/1/2019, DCSSO announced it will no longer contract to house Immigration and Customs Enforcement (ICE) detainees.

Source: "Average Daily Population of Detention Facilities", Davidson County Sheriff's Office.

**Average Daily Population By Facility - Detail**

2021 Month	DDC - Downtown Detention Center (formerly CJC)			CDM - Correctional Development Center Male			CDF - Correctional Development Center Female			
	Capacity - 762 (a)			Capacity - 768 (f)			Capacity - 252 (as of 12/7/2020) (b)			
	ADP (Includes the Gym and Excludes Processing*)	Percent Change from Previous Month	Average Percent Capacity	ADP	Percent Change from Previous Month	Average Percent Capacity	ADP	Percent Change from Previous Month	Average Percent Capacity	Temporary Covid 19 Males ADP**
Jan	522	-0.3%	68.5%	541	1.9%	70.4%	141	7.9%	56.1%	
Feb										
Mar										
Apr										
May										
Jun										
Jul										
Aug										
Sep										
Oct										
Nov										
Dec										
<b>YTD AVG</b>	<b>522</b>	<b>-0.3%</b>	<b>68.5%</b>	<b>541</b>	<b>1.9%</b>	<b>70.4%</b>	<b>141</b>	<b>7.9%</b>	<b>56.1%</b>	

\*Processing includes all inmates in custody who have not been assigned a bed.

\*\*Males who tested positive for COVID19 temporarily housed in CDCF.

2021 Month	HDC - Hill Detention Center			ORC - Offender Re-Entry Center			BCC - Behavioral Care Center				
	Capacity - 0 (as of 5/6/20) (e)			Capacity - 0 (g)			Capacity - 60 (h)				
	ADP	Percent Change from Previous Month	Average Percent Capacity	ADP	Percent Change from Previous Month	Average Percent Capacity	Male ADP	Female ADP	Total ADP	Percent Change from Previous Month	Average Percent Capacity
Jan							4	2	5	-26.0%	9.0%
Feb											
Mar											
Apr											
May											
Jun											
Jul											
Aug											
Sep											
Oct											
Nov											
Dec											
<b>YTD AVG</b>							<b>4</b>	<b>2</b>	<b>5</b>	<b>-26.0%</b>	<b>9.0%</b>

2021 Month	MCC - Maximum Correctional Center					MDF - Metro Davidson County Detention Facility				
	Capacity - 508 (as of 12/7/2020) (b)					Capacity - 0 (as of 12/7/2020) (c)				
	Male ADP	Female ADP	Total ADP	Percent Change from Previous Month	Average Percent Capacity	Male ADP	Female ADP	Total ADP	Percent Change from Previous Month	Average Percent Capacity
Jan	332		332	4.9%	65.3%	0	0	0	-100.0%	0.0%
Feb										
Mar										
Apr										
May										
Jun										
Jul										
Aug										
Sep										
Oct										
Nov										
Dec										
<b>YTD AVG</b>	<b>332</b>		<b>332</b>	<b>4.9%</b>	<b>65.3%</b>	<b>0</b>	<b>0</b>	<b>0</b>	<b>-100.0%</b>	<b>0.0%</b>

\*Facility notes are found on page 8.

## Average Daily Population By Facility - Summary

Total All Facilities				
Capacity - 2,350 (as of 12/7/20) (d)				
2021 Month	ADP	Percent Change from Previous Month	Average Percent Capacity	System Capacity
Jan	1,541	-1.1%	65.6%	2,350
Feb				2,350
Mar				2,350
Apr				2,350
May				2,350
Jun				2,350
Jul				2,350
Aug				2,350
Sep				2,350
Oct				2,350
Nov				2,350
Dec				2,350
<b>YTD AVG</b>	<b>1,541</b>	<b>-1.1%</b>	<b>65.6%</b>	

Total DCSO Facilities				
Capacity - 2,350 (as of 12/7/20)				
2021 Month	ADP	Percent Change from Previous Month	Average Percent Capacity	System Capacity
Jan	1,541	2.1%	65.6%	2,350
Feb				2,350
Mar				2,350
Apr				2,350
May				2,350
Jun				2,350
Jul				2,350
Aug				2,350
Sep				2,350
Oct				2,350
Nov				2,350
Dec				2,350
<b>YTD AVG</b>	<b>1,541</b>	<b>2.1%</b>	<b>65.6%</b>	

Last Date Facility was Below 100% Capacity*		
Facility	Date	Current Consecutive Days in 2020 Over Capacity
DDC	1/31/21	0
CDM	1/31/21	0
CDF	1/31/21	0
HDC	1/31/21	0
ORC	1/31/21	0
BCC	1/31/21	0
MCC	1/31/21	0
MDF	1/31/21	0

\*Between Jan 1 and Dec 31, 2021.

### Notes:

(a) Capacity at CJC increased to 807 from 705 in October 2007 through recertification. Capacity decreased to 800 in November 2012 and again to 788 in August 2013. CJC closed for renovation 8/13/16. On 4/16/2020 it began housing inmates and was renamed DDC; new capacity is 762.

(b) CDF opened in March 2006 when all female inmates were moved there from MDF. In May 2016 all females were moved out of CDF and into MDF; then in August 2016 CDF reopened as MCC (Maximum Correctional Center) and began housing male inmates as a result of renovations at CJC. The capacity at MCC remained at 508. In May 2020, MCC was renamed back to CDF and females were moved from MDF to CDF. Starting 6/25/2020, males testing positive for COVID19 were temporarily housed at CDF. Starting December 2020 due to the temporary closing of MDF, females were housed at CDF (capacity 252), males were housed at MCC (capacity 508).

(c) Capacity for MDF increased to 1,092 from 892 on 11/1/2005 through recertification. It increased to 1,348 in June 2011. Locally sentenced felon females were moved there in July 2011. In May 2016 all female inmates were moved to MDF because of renovations at CJC. In May 2020, females were moved out of MDF back to CDF. In December 2020, inmates were moved out of MDF into MCC and the facility was temporarily closed by 12/7/2020.

(d) Total capacity for all facilities increased from 3,679 to 3,781 in October 2007; from 3,781 to 3,842 in December 2007; from 3,842 to 4,010 in February 2008, from 4,010 to 4,266 in June 2011. It decreased to 4,259 in November 2012, and again to 4,247 in August 2013. With the temporary closing of CJC in August 2016 due to renovations, the capacity became 3,459. In April 2019, ORC closed so the capacity decreased to 3,159. CJC reopened as DDC in April 2020, resulting in a new capacity of 3,921. In May 2020 the HDC closed, resulting in a capacity of 3,386. The capacity increased to 3,446 on 9/14/2020 with the opening of BCC. On 12/7/2020, system capacity decreased to 2,350 with the temporary closing of MDF and resulting changes to MCC and CDF.

(e) Total capacity for HDC increased from 474 to 535 in December 2007. Booking functions were moved to HDC in August 2016 due to renovations at CJC, but the capacity remained at 535. HDC was closed on 5/6/2020 and all inmates were moved to DDC.

(f) Total capacity for CDM increased from 600 to 768 in February 2008.

(g) ORC temporarily closed in January 2011. It reopened in May 2016 to house inmates due to renovations at CJC; capacity was 300. ORC was closed on 4/7/2019.

(h) BCC opened on 9/14/2020 with a capacity of 60, comprised of 30 males and 30 females.



## Adult Physical Arrests

MONTH	2020	2021	% Change		
			Previous Month to Current Month	2020 Month to 2021 Month	Since January 2021
Jan	2,019	1,267	5.0%	-37.2%	
Feb	1,938				
Mar	1,541				
Apr	949				
May	1,345				
Jun	1,092				
Jul	1,221				
Aug	1,384				
Sep	1,574				
Oct	1,429				
Nov	1,300				
Dec	1,207				
<b>YTD Total</b>	<b>16,999</b>	<b>1,267</b>	<b>Avg: 5%</b>	<b>Avg: -37.2%</b>	<b>-40.6%</b>

MONTH	2020 YTD TOTAL	2021 YTD TOTAL	2020 YTD to 2021 YTD % Change
Jan	2,019	1,267	-37.2%
Feb	3,957		
Mar	5,498		
Apr	6,447		
May	7,792		
Jun	8,884		
Jul	10,105		
Aug	11,489		
Sep	13,063		
Oct	14,492		
Nov	15,792		
Dec	16,999		

Source: Metropolitan Nashville Police Department, data pulled on 2/16/2021. Expungements are removed.

Note: This report includes the number of adult physical arrests made in Davidson County during the time period. A physical arrest is a custodial arrest and represents an individual body and not the number of charges issued to a person. Expungements have been removed.