

THE METROPOLITAN GOVERNMENT OF NASHVILLE AND DAVIDSON COUNTY

# FY 2019-2020 Operating Budget

(July 1, 2019 - June 30, 2020)



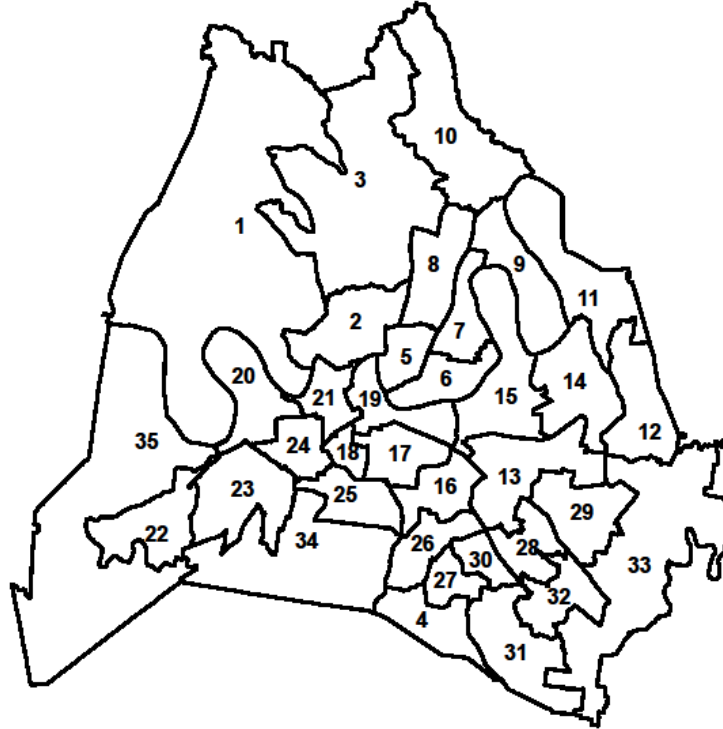
**David Briley, Mayor**

Jim Shulman, Vice Mayor

Members of the Metropolitan Council:

At Large	John Cooper	District #16	Mike Freeman
At Large	Erica Gilmore	District #17	Colby Sledge
At Large	Bob Mendes	District #18	Burkley Allen
At Large	Sharon Hurt	District #19	Freddie O'Connell
At Large	Vacant	District #20	Mary Carolyn Roberts
District # 1	Jonathan Hall	District #21	Ed Kindall
District # 2	DeCosta Hastings	District #22	Sheri Weiner
District # 3	Brenda Haywood	District #23	Mina Johnson
District # 4	Robert Swope	District #24	Kathleen Murphy
District # 5	Scott Davis	District #25	Russ Pulley
District # 6	Brett Withers	District #26	Jeremy Elrod
District # 7	Anthony Davis	District #27	Davette Blalock
District # 8	Nancy VanReece	District #28	Tanaka Vercher
District # 9	Bill Pridemore	District #29	Delishia Porterfield
District #10	Doug Pardue	District #30	Jason Potts
District #11	Larry Hagar	District #31	Fabian Bedne
District #12	Steve Glover	District #32	Jacobia Dowell
District #13	Holly Huezo	District #33	Antoinette Lee
District #14	Kevin Rhoten	District #34	Angie Henderson
District #15	Jeff Syracuse	District #35	Dave Rosenberg

Council Districts



Director of Finance: Talia Lomax-O'dneal  
Deputy Finance Director: Kim McDoniel  
Assistant Director/Budget Officer: Chris Harmon

Finance Manager:  
Finance Manager:  
Finance Manager:

Kenneth Hartlage  
Kathy King  
Greg McClarin

Finance Administrator:  
Finance Administrator:  
Finance Administrator:

David Edwards  
Brandon Hess  
Alicia Viravouth

Office of Management and Budget Staff:

Starla Friedmann  
Kati Guenther

Rose Hirschy  
Loan Huynh

Tadayoshi Kawawa  
Dustin Owens

Richie Swiger

Fiscal Year 2019-2020 Operating Budget Book

The Metropolitan Government of Nashville and Davidson County  
Department of Finance – Office of Management and Budget  
700 Second Avenue South, Suite 201 Nashville, Tennessee 37210  
Telephone: (615) 862-6120 Fax: (615) 880-2800 www.nashville.gov



Published in May 2019  
First printing (also available at [www.nashville.gov](http://www.nashville.gov) in Adobe Acrobat® PDF format)

This book supersedes all similar information previously disseminated by the Office of Management and Budget.

Cover Image Credit: Beverly Stucker Precious, *Great Beginnings*, 2015, Metro Arts: Nashville office of Arts + Culture.



For an ADA accommodation, please contact Kimberly Northern at 615-880-1710  
or by email at [kimberly.northern@nashville.gov](mailto:kimberly.northern@nashville.gov)

# Distinguished Budget Presentation Award



GOVERNMENT FINANCE OFFICERS ASSOCIATION

*Distinguished  
Budget Presentation  
Award*

PRESENTED TO

**Nashville/Davidson County Metropolitan Government**

**Tennessee**

For the Fiscal Year Beginning

**July 1, 2018**

*Christopher P. Morill*

Executive Director

The Government Finance Officers Association of the United States and Canada (GFOA) presented a Distinguished Budget Presentation Award to the Metropolitan Government of Nashville and Davidson County, Tennessee for its annual budget for the fiscal year July 1, 2018 to June 30, 2019 (FY 2018-19).

In order to receive this award, a governmental unit must publish a budget document that meets program criteria as a policy document, as an operations guide, as a financial plan, and as a communications device.

The award is valid for a period of one year only. We believe our current budget continues to conform to program requirements, and we are submitting it to GFOA to determine its eligibility for another award.

The GFOA is the leading association for government finance professionals in North America. We first received the award for the fiscal year 1991-1992 book, and we have received it every year since. This year's was given for our *FY2019 Operating Budget* book. GFOA's Distinguished Budget Presentation Awards Program is the only national awards program in governmental budgeting. The government also holds GFOA's Certificate of Achievement for Excellence in Financial Reporting for our Comprehensive Annual Financial Report.

# Contents

---

	<u>Department Number</u>	<u>Page</u>
Members of the Metropolitan Council		i
Council Districts		ii
GFOA Distinguished Budget Presentation Award		iv
How to Use this Book		vii
Format and Organization		vii
How to Read Budget Book Financial Schedules		viii
<b>Section A - Executive Summary</b>		
Mayor's Letter of Transmittal		A-1
Introduction		A-2
FTE Adjustments		A-4
<b>Metro Nashville and its Budget</b>		
Metro Government		A-10
At a Glance (Pie Charts, Summary of the Budget)		A-11
Organizational Structure		A-13
Financial Organization		A-14
The Budget Process		A-16
Long Term Financial Planning		A-18
Financial Policies		A-18
How the Property Tax Works		A-21
Local Option Sales Tax		A-27
Capital Improvements		A-29
Operating Budget Effects		A-35
<b>Section B – Budget and Tax Levy Ordinance</b>		B-1
<b>Section C - Internal Services</b>		C-1
<b>Section D - General Government &amp; Fiscal Administration</b>		
Metro Council	02	D-02-1
Metro Clerk	03	D-03-1
Mayor's Office	04	D-04-1
Election Commission	05	D-05-1
Law	06	D-06-1
Planning Commission	07	D-07-1
Human Resources	08	D-08-1
Register of Deeds	09	D-09-1
General Services	10	D-10-1
Historical Commission	11	D-11-1
Information Technology Services	14	D-14-1
Finance	15	D-15-1
Assessor of Property	16	D-16-1
Trustee	17	D-17-1
County Clerk	18	D-18-1
Office of Internal Audit	48	D-48-1
Office of Emergency Management	49	D-49-1
Emergency Communications	91	D-91-1
<b>Section E - Justice Administration &amp; Law Enforcement</b>		
District Attorney	19	E-19-1
Public Defender	21	E-21-1
Juvenile Court Clerk	22	E-22-1
Circuit Court Clerk	23	E-23-1
Criminal Court Clerk	24	E-24-1
Clerk and Master of the Chancery Court	25	E-25-1

# Contents

	<u>Department Number</u>	<u>Page</u>
Juvenile Court	26	E-26-1
General Sessions Court	27	E-27-1
State Trial Courts	28	E-28-1
Justice Integration Services	29	E-29-1
Sheriff	30	E-30-1
Police	31	E-31-1
Criminal Justice Planning	47	E-47-1
Office of Family Safety	51	E-51-1
Community Oversight Board	52	E-52-1
 <b>Section F - Fire &amp; Public Works</b>		
Fire Department	32	F-32-1
Public Works	42	F-42-1
 <b>Section G - Regulation, Inspection &amp; Conservation</b>		
Codes Administration	33	G-33-1
Beer Permit Board	34	G-34-1
Agricultural Extension Service	35	G-35-1
 <b>Section H - Social &amp; Health Services</b>		
Social Services	37	H-37-1
Health Department	38	H-38-1
Human Relations Commission	44	H-44-1
 <b>Section I - Libraries, Recreation &amp; Cultural</b>		
Library	39	I-39-1
Parks & Recreation	40	I-40-1
Metro Arts Commission	41	I-41-1
Municipal Auditorium	61	I-61-1
Metro Sports Authority	64	I-64-1
 <b>Section J - Education, Other Funds &amp; Administrative</b>		
Farmers' Market	60	J-60-1
Board of Fair Commissioners	62	J-62-1
Convention Center Authority	60271	J-60271-1
Water and Sewer Services Fund	65	J-65-1
Hospital Authority	66/67/69	J-66/67/69-1
Metro Action Commission	75	J-75-1
Metropolitan Transit Authority (MTA)	78	J-78-1
Metropolitan Nashville Public Schools	80	J-80-1
Community Education Commission	70	J-70-1
District Energy System	68	J-68-1
Administrative	01	J-01-1
Debt Service Funds	90	J-90-1
4% Reserve Fund	30003	J-30003-1
Central Business Improvement District (CBID)	30005	J-30005-1
Gulch Central Business Improvement District (GCBID)	38005	J-38005-1
Hotel Tax Funds	30031-30047	J-30031-30047-1
 <b>Section K - Program Budgets – electronic version only</b>		
<b>Appendices - electronic version only</b>		
Appendix 1: Financial Schedules		
Appendix 2: Glossary		
Appendix 3: The Law and the Budget		
Appendix 4: About Nashville		
Appendix 5: Comparative Analytical Statistics		
Appendix 6: Pay Grades and Rates		
Appendix 7: Financial Trend Monitoring System		

# How to Use this Book

## Format and Organization of this Book

As the previous Table of Contents demonstrates, this book divides budget information into different sections, each with its own series of page numbers.

**Section A** is the Executive Summary of the budget, followed by supplemental information about Metro, its organization, finances, and budget.

**Section B** is the Budget Ordinance and Tax Levy filed as required by Metro Code.

**Section C** is the Internal Services section which details the individual internal service charges by type for each department. It also contains the methodology for calculating each internal service charge.

**Sections D-J** present more descriptive operational and budget information about each department (board, commission, or elected office). These departments are grouped by function into each section.

**Section K** (electronic) presents the program budgets for each department in the same order as Sections D-J.

All departments included in this book have a uniform format. Each department's budget is presented in a program-based format that provides the reader with a wealth of information, not only about the department's budget, but also about its mission, goals and performance toward providing the very best results possible for citizens.

The following pages provide an example and explanation of each part of the agency budget book pages.

## Format and Organization of the Department Pages

Sections D-J of this book contains information at the department level about the:

**Mission** – Every department's budget pages include a mission statement. A mission statement is a clear, concise statement of purpose for the entire department that focuses on broad, yet distinct results that will be achieved. This statement answers the question, "*Why does this department exist?*"

**Budget summary** – Following the mission statement is a table that summarizes the department's financial information for all of its annually budgeted funds. It also includes the location of the department as well as the top managers who can explain the budget. This table also contains *per capita* expenditure information at the department level.

**Organizational structure** – The organization chart shows major department units (divisions/bureaus, etc.) and how they report to the department's director, elected official or board.

**Listing of the programs and lines of business** – In addition to the organization chart, these pages also include a listing of the lines of business (**in bold**) and programs.

**Budget highlights** – Budget highlights summarize changes between the FY17 and FY18 budgets. Changes in

funding and FTEs are noted, along with the impact of that funding change on performance.

**Financial** – This table includes a difference column and a % change column for each expenditure listed. At the bottom of the financial page is the *per capita* expenditure information for the department.

**FTE information** – The FTE information found at the end of each department's information presents the budgeted headcount and full-time equivalent (FTE) position information by fund and classification, along with the class number and pay grade.

**Budget and performance information by program** – Each program listed includes a statement of purpose – a "mini-mission" as well as a table that presents the budget; full-time equivalent (FTE) positions by fund type (GSD General, USD General, and other Special Purpose Funds). This presentation is designed to consistently present budgetary and performance information in a format that is easy to read.

The table for each program also includes a difference column and % change column. These two columns show the difference in the budget and performance from FY18 – FY19.

# How to Use this Book

## How to Read Budget Book Financial Schedules (Revenue and Expenditure Object Groups)

### The Chart of Accounts

The budget is organized according to Metro's chart of accounts – the financial accounting and coding structure used in both the budget ordinance and this book. The chart of accounts is composed of funds, business units (BUs), and object accounts.

**Funds** are accounting entities with their own assets, liabilities, equity, revenues, and expenditures, for certain specific activities or to accomplish definite objectives. Funds may involve many agencies. Legal requirements or financial policies usually restrict our ability to move money between funds, so we cannot necessarily replace or fund operations in one fund with money from another fund. Likewise, in special purpose funds, we often cannot move money from one department to another.

Each fund is made up of one or more **business units** (BUs). BUs are the lowest levels at which we manage and/or report separate financial data; they represent an organizational unit, program, or activity within an agency and fund. A fund may have several BUs, but each BU is associated with only one fund. BUs can also be grouped by **agency**. In departments with strategic business plans, related BUs also form **programs** and **lines of business** that may cross funds.

**Object accounts** represent individual types and sources of revenues or uses of expenditures.

The Finance Department maintains detailed financial information by fund, business unit, and object account. However, this book presents the budget at a more understandable level by agency, fund (or groups of minor funds), and object group.

### Changes in Presentation

Changes in reporting requirements have caused many Transfers to Component Units (certain Metro agencies) to be classified as Other Expenses. In FY 2005, the Finance Department split the General Government Grants Fund into individual departmental grants funds; these were and are classified as special purpose (specifically, special revenue) funds.

### How to Read the Financial Pages

Each agency's financial page presents a summary of revenues and expenditures for the department's operations in one of three fund types:

- The GSD General Fund,
- The USD General Fund, and
- Special Purpose funds (the combined total of annually budgeted enterprise, internal service, special revenue, and similar funds, although that money may not be interchangeable).

The top half of the page presents uses of money – expenses, expenditures, and transfers to other funds and component units of the government. The bottom half presents sources of money – revenues and transfers from other funds.

The difference between total expenditures and program revenues indicates how much the agency's programs depend on public money.

The remainder of this page and the next page describe, in order, what is represented by the rows of the expenditure and revenue financial tables.

### OPERATING EXPENSE

**PERSONAL SERVICES** – Salaries and wages (regular, holiday, injured on duty, leave, longevity, shift differential, out of class pay, open range increases, overtime, and perfect attendance); fringe benefits (auto allowance, dental, group health, group life, social security, pension, and FSA pre-tax savings); and per diem and other fees (instructors, court reporter, game official, jury pay, legislative delegate, other per diem fees, poll workers, and witness fees)

### OTHER SERVICES:

Utilities – Electricity, gas, water, cable television

Professional and Purchased Services – Accounting, appraisals, architectural, auditing, demolition, dialysis, engineering, facilities management, investigators, laboratory, landscaping, legal, management and software consultants, project administration and management, subcontractors, administrative services, archiving, billing, bottled water, care of persons and animals, chipper service, collections, disposal, recycling, flight service, food preparation, grounds maintenance, hazardous waste disposal, health services, internet services, interpreters, janitorial, laundry, meter reading, other purchased services, personal contract service, pest control, property protection, recycling, sweeping, and towing

Travel, Tuition, and Dues – Local and out-of-town travel, parking, memberships, registration, and tuition

Communications – Pagers, postage and delivery, telephones, and subscriptions

Repairs & Maintenance Services – Repairs to and maintenance of vehicles, buildings, computers, office equipment, roads & streets; electrical, mechanical & plumbing systems; and other items

Internal Service Fees – Payments to Metro internal service funds for facilities management, information systems, fleet management, postal service, and radio shop

### OTHER EXPENSE –

Supplies and materials (various parts and supplies, fuel, books, clothing, computer hardware and software, food and ice, furniture, paint, repair & maintenance parts and supplies, signs, uniforms); miscellaneous other expenses and payments (bad debt, council reimbursements, court costs, damages and small claims, parking violation fees, refund errors); fixed charges (bank fees, deferred compensation payments, finance charges, fixed charges, insurance, interest expense, investment fees, rent, surety bonds); licenses, permits, and fees (alarm permits, auto emission tests, beer permits, driver's license, drug tests, elevator permits, food service permits, hazardous waste permits, notary, pharmacy license, software licenses, state water quality permits, underground tank fees, vehicle registrations, water pollution fees); taxes paid by Metro agencies (business,



# How to Use this Book

demolition, nursing home, personalty, professional privilege, and sales taxes); and grant contributions and awards made by Metro agencies to others (contract performance bonus, contributions and grants, employee awards, training stipend); printing, advertising, promotion, amortization expense, arbitrage rebate, bond sale expense, compensation for damages, debt service, dental claims, depreciation, discount on bonds, educational programs, health claims, interest expense, pension, principal retirement, buildings, building improvements, capital outlay, computer equipment, furniture and fixtures, infrastructure, land, machinery, motor vehicles, budget allotment offset, budget intra-fund transfer, NCAC charges

**TRANSFERS TO OTHER FUNDS & UNITS** – Transfers and subsidies to other agencies, funds, debt service, environmental remediation, local grant match, and operational transfers

**PROGRAM REVENUE** – Fees, charges, grants, and contributions specifically generated by or for services that the department provides. They are intended to fully or partially fund the specific program, and so reduce the net cost of the program to be financed from the government's general revenues. They may be generated either from the program's customers (like user fees) or from outside parties (like grants).

**Charges, Commissions, and Fees** – Charges and fees to customers made by Metro agencies for the services they provide, including enterprise fund charges, internal service fund charges, admissions, advertising, ambulance fees, appeals, concessions, data processing fee, day care service, disposal fee, drug testing, dumping, engineering fee, entry fees, external source recovery, fire hydrant inspection, golf cart rental, green fees, immunization fees, legal services, lobbyist registration, maps, Medical Examiner fees, medical services, membership fees, client reimbursements, parking, Police secondary employment, publications, radio repair, vehicle emission test fees, workshop fees, and court, court clerk, and elected officials' commissions and fees

**Federal: Direct and Pass Through** – Grants, revenues, and reimbursements that Metro receives directly from the Federal government such as Department of Justice revenue sharing, Medicare, SSI reimbursements, and other federal grants; Federal grants, revenues, and reimbursements that Metro receives through the state, such as most Medicaid/TennCare; Federal grants, revenues, and reimbursements that Metro receives other than federal direct or federal through state, including some Medicaid/TennCare and Medicare

**State Direct** – Revenues from grants, revenues, reimbursements, and state-shared revenues that Metro receives from the state, such as alcoholic beverage tax

apportionment, drug enforcement, education appropriation, excise tax allocation, felony forfeitures, gas and fuel tax, gas inspection fees, post-mortem reimbursements, and Metro's share of the state sales tax levy

**Other Government Agencies** – Revenues from agencies of other governmental units

**Other Program Revenue** – Cash contributions from groups or individuals, sale of donated property, cost reimbursement, litigation settlement, premium for property loss, premium for self-insured liability, recycling rebate, sales of miscellaneous items, unapplied deposit, unclaimed property, vending revenue, bond proceeds, contributions of capital, easement rights, finance charges, Metro Investment Pool interest, notes proceeds, premium on bonds

**NON-PROGRAM REVENUE** – Revenues that are recorded by the EBS accounting system in the department's business units, but are not intended to support the department's programs. This includes:

**Property Taxes** – Real, personal, and public utility *ad valorem* taxes and payments in lieu of them.

**Local Option Sales Tax** – Local option sales taxes, Tennessee telecommunication sales tax

**Other Taxes, Licenses, and Permits** – Alarm permits, alcoholic beverage tax, beer permits, building and excavation permits, business tax, taxicab and wrecker license, franchises, hotel occupancy tax, marriage license, motor vehicle license, obstruction and street closure permits, sidewalk and right-of-way permits, solicitation permits, wholesale liquor tax

**Fines, Forfeits, and Penalties** – Civil fines, confiscated cash, court-ordered restitutions, recovered judgments, litigation tax, Metro court fines and costs, offender program income, traffic violation and DUI fines, vehicle tow-in fees, warrant fees

**Compensation From Property** – Abandoned vehicle auction, gain (loss) on sale of property, insurance and external source recovery, rent, subrogation recovery

**TRANSFERS FROM OTHER FUNDS AND UNITS** – Capital improvement plan, Council appropriations, debt service, environmental remediation, equity transfers between funds, Farmers' Market subsidy, hospital subsidies, legal services, local match for grants, Police service, school program.

**Please see the example pages on the following pages for additional information**

# Department Name-At a Glance

Each department's budget pages include the department's **mission statement**.

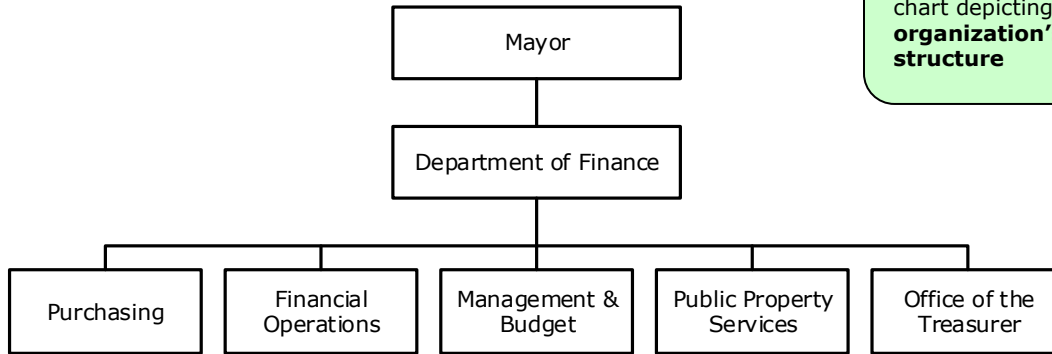
<b>Mission</b>	The mission of the Department of Finance is to provide financial management, information, and business services to policy makers, departments, agencies, investors, and the Nashville community so they can have confidence in Metro Government, make informed decisions, and achieve their results.			
<b>Budget Summary</b>		<u>2017-18</u>	<u>2018-19</u>	<u>2019-20</u>
	<b>Expenditures and Transfers:</b>			
		\$ 7,682,800	\$ 8,185,200	\$ 9,233,000
		818,700	850,300	911,400
	<b>Expenditures and Transfers</b>	<u>\$ 8,501,500</u>	<u>\$ 9,035,500</u>	<u>\$ 10,144,400</u>
	<b>Revenues:</b>			
	Contributions, and Fees	\$ 818,700	\$ 846,400	\$ 911,400
	Grants and Agencies	0	0	0
	License Revenue	0	0	0
	<b>Total Revenue</b>	<u>\$ 818,700</u>	<u>\$ 846,400</u>	<u>\$ 911,400</u>
	Transfers From Other Funds and Units	0	3,900	0
	<b>Total Revenues</b>	<u>\$ 818,700</u>	<u>\$ 850,300</u>	<u>\$ 911,400</u>
	<b>Expenditures Per Capita</b>	\$ 12.89	\$ 13.50	\$ 14.94
<b>Positions</b>	Total Budgeted Positions			105
<b>Contacts</b>	Director: Talia Lomax-O'dneal Finance Manager: Donna Foster			nashville.gov finance.gov
	106 Metro Courthouse 37201			

The mission statement is followed by a **summary table** that summarizes the agency's financial budget for all of its annually budgeted funds as well as information about the number of positions within the department.

The table includes **expenditures per capita** information. The *per capita* number is taken from population obtained from the Census Bureau. Due to delays in reporting data, we use Census information that is two years prior to the fiscal year. Census data from 2018 was used for FY20, 2017 was used for FY19, and Census Data from 2016 was used for FY18.

# Department Name-At a Glance

## Organizational Structure



Every department section includes a chart depicting the **organization's structure**

**Programs** are listed for every department.

## Programs

### Business Integrity and Accountability

Compliance Monitoring and Accountability

### Business Support and Solutions

Accounts Payable  
 Business Assistance Office  
 Cash Operations  
 Financial Accounting and Reporting  
 Payroll Operations  
 Purchasing  
 Real Estate Management  
 Tourism Tax

### Executive Leadership

Executive Leadership  
 Non-allocated Financial Transactions

### Strategic Resource Allocation and Management

Budget Planning and Management  
 Cost Planning and Management  
 Grants Assessment and Resource  
 Investment Committee Support  
 Investor Relations

# Department Name - At a Glance

## Budget Changes and Impact Highlights

Recommendation			Impact
<b>Purchasing Reduction</b>			
Salary and Fringe	GSD	\$(54,500) (1.00 FTE)	No
<b>Non-allocated Financial Transactions</b>			
Fringe Benefit Savings	GSD ISF***	(109,400) (10,200)	Savings realized through reduced cost for fringe benefits
Insurance Billings	ISF	(600)	No impact on performance. Represents direct charges to department for insurance costs
Internal Service Charges*	GSD ISF	51,400 2,400	Delivery of centrally provided services including information systems, fleet management, radio, and surplus property
LOCAP Adjustments	ISF	1,100	No impact on performance
<b>General Services District Total</b>		\$(112,500) (1.00 FTE)	
<b>Internal Service Funds Total</b>		\$(7,300)	
<b>TOTAL</b>		\$(119,800) (1.00 FTE)	

The department's **highlights** present changes in funding and FTEs along with the impact on performance.

\* See Internal Service Charges section for details  
 \*\*\* ISF – Internal Service Funds

# Department Name-Financial

<b>GSD General Fund</b>						
	FY 2018 Budget	FY 2018 Actuals	FY 2019 Budget	FY 2020 Budget	FY19-FY20 Difference	FY19-FY20 % Change
<b>OPERATING EXPENSES:</b>						
PERSONAL SERVICES	6,930,4				(163,900)	-2.30%
<b>OTHER SERVICES:</b>						
Utilities	0	(429)	0	0	0	0.00%
Professional & Purchased Services	76,400	13,045	76,400	76,400	0	0.00%
Travel, Tuition, and Dues	8,400	19,086	5,400	5,400	0	0.00%
Communications	92,500	46,892	87,500	87,500	0	0.00%
Repairs & Maintenance Services	11,000	2,740	8,300	8,300	0	0.00%
Internal Service Fees	728,600	727,934	184,600	236,000	51,400	27.84%
Other Expenses	200,600	162,182	192,300	192,300	0	0.00%
<b>TOTAL OTHER SERVICES</b>	<b>1,117,500</b>	<b>971,450</b>	<b>554,500</b>	<b>605,900</b>	<b>51,400</b>	<b>9.27%</b>
<b>TOTAL OPERATING EXPENSES</b>	<b>8,047,900</b>	<b>7,473,187</b>	<b>7,682,800</b>	<b>7,570,300</b>	<b>(112,500)</b>	<b>-1.46%</b>
<b>TRANSFERS TO OTHER FUNDS/UNITS</b>	<b>17,400</b>	<b>0</b>	<b>0</b>	<b>0</b>	<b>0</b>	<b>0.00%</b>
<b>TOTAL EXPENSES &amp; TRANSFERS</b>	<b>8,065,300</b>	<b>7,473,187</b>	<b>7,682,800</b>	<b>7,570,300</b>	<b>(112,500)</b>	<b>-1.46%</b>
<b>PROGRAM REVENUE:</b>						
Charges, Commissions, & Fees	0	0	0	0	0	0.00%
Federal (Direct & Pass Through)	0	0	0	0	0	0.00%
State Direct	0	0	0	0	0	0.00%
Other Government Agencies	0	0	0	0	0	0.00%
Other Program Revenue	0	0	0	0	0	0.00%
<b>TOTAL PROGRAM REVENUE</b>	<b>0</b>	<b>0</b>	<b>0</b>	<b>0</b>	<b>0</b>	<b>0.00%</b>
<b>NON-PROGRAM REVENUE:</b>						
Property Taxes			0	0	0	0.00%
L			0	0	0	0.00%
C			0	0	0	0.00%
F			0	0	0	0.00%
C			0	0	0	0.00%
<b>TOTAL NON-PROGRAM REVENUE</b>			<b>0</b>	<b>0</b>	<b>0</b>	<b>0.00%</b>
<b>TOTAL REVENUE &amp; TRANSFERS</b>	<b>0</b>	<b>0</b>	<b>0</b>	<b>0</b>	<b>0</b>	<b>0.00%</b>
<b>TOTAL REVENUE &amp; TRANSFERS</b>	<b>0</b>	<b>0</b>	<b>0</b>	<b>0</b>	<b>0</b>	<b>0.00%</b>
<b>Expenditures Per Capita</b>	<b>\$12.44</b>	<b>\$11.53</b>	<b>\$11.67</b>	<b>\$11.33</b>	<b>-\$0.34</b>	<b>-2.91%</b>

This table includes a difference column and a % change column for each expenditure listed.

The end of this financial table includes information about the **Expenditures Per Capita** for the department. The *per capita* number is taken from population obtained from the Census Bureau. Due to delays in reporting data, we use Census information that is two years prior to the fiscal year. Census data from 2018 was used for FY20, 2017 was used for FY19, and Census Data from 2016 was used for FY18.

# Department Name-Financial

Title	Grade	Job Class	FY 2018 Budgeted		FY 2019 Budgeted		FY 2020 Budgeted		FY19-FY20 Variance	
			Pos.	FTE	Pos.	FTE	Pos.	FTE	Pos.	FTE
<div style="border: 1px solid black; padding: 5px; display: inline-block;">                     The end of the financial information presents the budgeted headcount and full-time-equivalent (FTE) position information by fund and classification, along with the class number and pay grade.                 </div>										
<b>GSD General</b>										
Accountant				0.00	4	4.00	4	4.00	0	0.00
Accountant				0.00	5	5.00	5	5.00	0	0.00
Admin Asst				2.00	1	1.00	1	1.00	0	0.00
Admin Svcs				1.00	0	0.00	0	0.00	0	0.00
Admin Svcs				1.00	1	1.00	1	1.00	0	0.00
Admin Svcs Officer 2	OR01	07243	1	1.00	0	0.00	0	0.00	0	0.00
Admin Svcs Officer 3	OR03	07244	7	7.00	10	10.00	10	10.00	0	0.00
Admin Svcs Officer 4	OR05	07245	2	2.00	3	3.00	3	3.00	0	0.00
Application Tech 2	ST08	10102	8	8.00	5	5.00	5	5.00	0	0.00
Application Tech 3	ST09	10103	8	8.00	9	9.00	9	9.00	0	0.00
Business Development Officer	OR05	06699	1	1.00	1	1.00	1	1.00	0	0.00
Finance Admin	OR07	10108	8	8.00	10	10.00	10	10.00	0	0.00
Finance Asst Dir	OR11	06108	3	3.00	3	3.00	3	3.00	0	0.00
Finance Deputy Dir	OR13	07704	1	1.00	2	2.00	2	2.00	0	0.00
Finance Dir	DP03	01570	1	1.00	1	1.00	1	1.00	0	0.00
Finance Mgr	OR09	06232	11	11.00	8	8.00	8	8.00	0	0.00
Finance Officer 1	OR01	10150	1	1.00	0	0.00	0	0.00	0	0.00
Finance Officer 2	OR03	10151	18	18.00	2	2.00	2	2.00	0	0.00
Finance Officer 3	OR05	10152	19	19.00	8	8.00	8	8.00	0	0.00
Mgmt & Budget Analy 2	OR03	10874	0	0.00	2	2.00	2	2.00	0	0.00
Mgmt & Budget Analy 3	OR06	10875	0	0.00	4	4.00	4	4.00	0	0.00
Office Support Rep 3	ST06	10122	0	0.00	1	1.00	1	1.00	0	0.00
Procurement Officer 1	OR01	10876	0	0.00	1	1.00	1	1.00	0	0.00
Procurement Officer 2	OR03	10877	0	0.00	6	6.00	6	6.00	0	0.00
Procurement Officer 3	OR05	10878	0	0.00	6	6.00	6	6.00	0	0.00
Special Projects Mgr	OR11	07762	3	3.00	4	4.00	4	4.00	0	0.00
Technical Specialist 1	OR04	07756	1	1.00	1	1.00	1	1.00	0	0.00
<b>Total Positions &amp; FTE</b>			<b>97</b>	<b>97.00</b>	<b>98</b>	<b>98.00</b>	<b>98</b>	<b>98.00</b>	<b>0</b>	<b>0.00</b>
<b>Treasury Management 51180</b>										
Finance Admin	OR07	10108	1	1.00	1	1.00	1	1.00	0	0.00
Finance Mgr	OR09	06232	2	2.00	2	2.00	2	2.00	0	0.00
Finance Officer 2	OR03	10151	2	2.00	2	2.00	2	2.00	0	0.00
Finance Officer 3	OR05	10152	1	1.00	1	1.00	1	1.00	0	0.00
Metropolitan Treasurer	OR11	03160	1	1.00	1	1.00	1	1.00	0	0.00
<b>Total Positions &amp; FTEs</b>			<b>7</b>	<b>7.00</b>	<b>7</b>	<b>7.00</b>	<b>7</b>	<b>7.00</b>	<b>0</b>	<b>0.00</b>
<b>Department Totals</b>			<b>104</b>	<b>104.00</b>	<b>105</b>	<b>105.00</b>	<b>105</b>	<b>105.00</b>	<b>0</b>	<b>0.00</b>

# Department Name

**\*\* Program Budgets are only included in online documents \*\***

## Strategic Resource Allocation and Management Line of Business

The purpose of the Strategic Resource Allocation and Management Line of Business is to provide knowledge, planning, advisory and consultation products to Metro departments and agencies, policymakers and the Nashville community and investors so they can make better informed decisions and have confidence that Metro is using public resources in the most effective and efficient way possible.

## Budget Planning and Management Program

The purpose of the Budget Planning and Management Program is to provide budgetary assistance and information to the Mayor, Council, and Metro departments so they can make well-informed budgetary decisions and to assist departments in effectively managing their resources to achieve performance results.

Each program includes a purpose statement that describes what the program provides to its customers.

budgetary assistance and information to the Mayor, Council, and Metro departments so they can make well-informed budgetary decisions and to assist departments in effectively managing their resources to achieve performance results.

<b>Budget &amp; Performance</b>		<b>2018 Budget</b>	<b>2018 Actuals</b>	<b>2019 Budget</b>	<b>2020 Budget</b>	<b>FY19-FY20 Difference</b>	<b>FY19-FY20 % Change</b>
<b>Budget:</b>	GSD General Fund	1,528,100	1,460,935	1,456,400	1,456,400	0	0.0%
	Total	\$1,528,100	\$1,460,935	\$1,456,400	\$1,456,400	\$0	0.0%
<b>FTEs:</b>	GSD General Fund	16.00	16.00	16.00	16.00	0.00	0.0%
	Total	16.00	16.00	16.00	16.00	0.00	0.0%

The table includes information about the program's budget and FTEs.

## Cost Planning and Management Program

The purpose of the Cost Planning and Management Program is to provide planning, implementation and support products to Metro departments and agencies so they can manage key product costs within predetermined performance targets and use the cost information to make resource and operational improvement decisions.

<b>Budget &amp; Performance</b>		<b>2018 Budget</b>	<b>2018 Actuals</b>	<b>2019 Budget</b>	<b>2020 Budget</b>	<b>FY19-FY20 Difference</b>	<b>FY19-FY20 % Change</b>
<b>Budget:</b>	GSD General Fund	119,800	123,260	125,200	125,200	0	0.0%
	Total	\$119,800	\$123,260	\$125,200	\$125,200	\$0	0.0%
<b>FTEs:</b>	GSD General Fund	1.00	1.00	1.00	1.00	0.00	0.0%
	Total	1.00	1.00	1.00	1.00	0.00	0.0%

