

18 County Clerk - At a Glance

Mission Collect state and local revenues, fees, commissions, and taxes as required by law while providing exceptional customer service to taxpayers in our Motor Vehicle, Business, Marriage, Notary, and Passport divisions.

Budget Summary

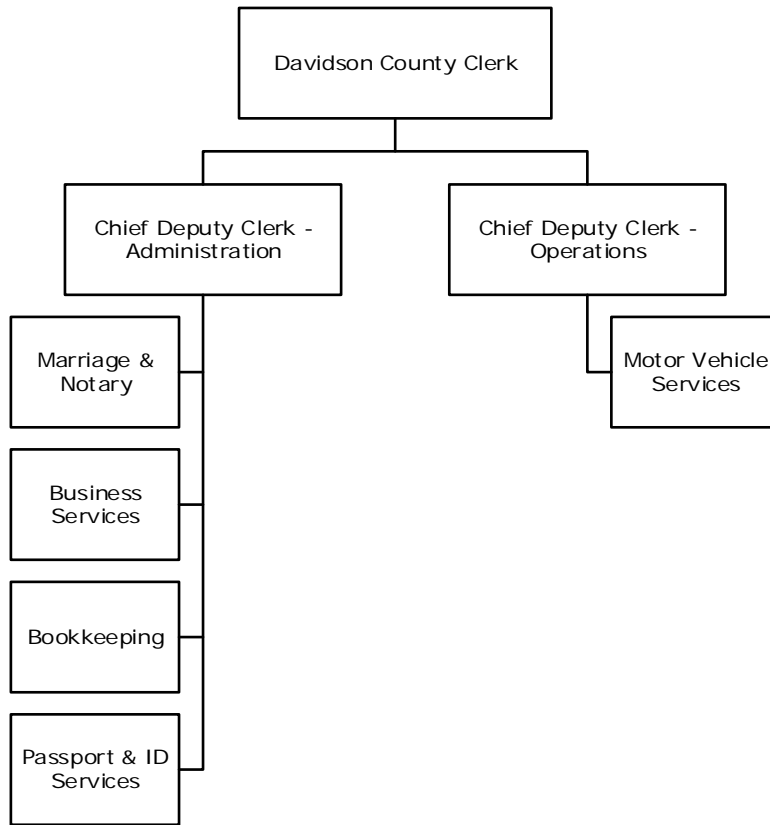
	<u>2018-19</u>	<u>2019-20</u>	<u>2020-21</u>
Expenditures and Transfers:			
GSD General Fund	\$ 4,677,800	\$ 4,877,200	\$ 4,847,300
Special Purpose Fund	135,000	135,000	145,000
Total Expenditures and Transfers	<u>\$ 4,812,800</u>	<u>\$ 5,012,200</u>	<u>\$ 4,992,300</u>
Revenues and Transfers:			
Program Revenue			
Charges, Commissions, and Fees	\$ 8,585,000	\$ 9,285,000	\$ 6,232,400
Other Governments and Agencies	47,500	47,500	57,500
Other Program Revenue	0	0	0
Total Program Revenue	<u>\$ 8,632,500</u>	<u>\$ 9,332,500</u>	<u>\$ 6,289,900</u>
Non-program Revenue			
Transfers From Other Funds and Units	\$ 2,600	\$ 2,600	\$ 2,600
	0	0	0
Total Revenues and Transfers	<u>\$ 8,635,100</u>	<u>\$ 9,335,100</u>	<u>\$ 6,292,500</u>
Expenditures Per Capita	\$ 6.96	\$ 7.24	\$ 7.19

Positions Total Budgeted Positions 89 87 87

Contacts County Clerk: Brenda Wynn email: brenda.wynn@nashville.gov
 Financial Manager: Tami Drake email: tami.drake@nashville.gov
 700 2nd Avenue South, Suite 101 37210 Phone: 615-862-6050

18 County Clerk - At a Glance

Organizational Structure



Programs

Administration

Administration
Computer
Non-allocated Financial Transactions

18 County Clerk - At a Glance

Budget Changes and Impact Highlights

Recommendation			Impact
Elected Official Salary Adjustment			
Salaries and Fringes	GSD	\$5,700	Increase in salary in accordance to T.C.A § 8-24-102 which establishes minimum compensation for constitutional officers
County Clerk Title Fees Fund			
Office Supplies and Equipment	SPF**	10,000	Supports the work in administration of the titling division
Non-allocated Financial Transactions			
Longevity	GSD	(33,600)	Elimination of longevity pay, with minimal impact on performance
Out of Town Travel	GSD	(2,000)	Elimination of out of town travel, with limited impact on performance
General Services District Total		\$(29,900)	
Special Purpose Funds Total		\$10,000	
TOTAL		\$(19,900)	

** SPF – Special Purpose Funds