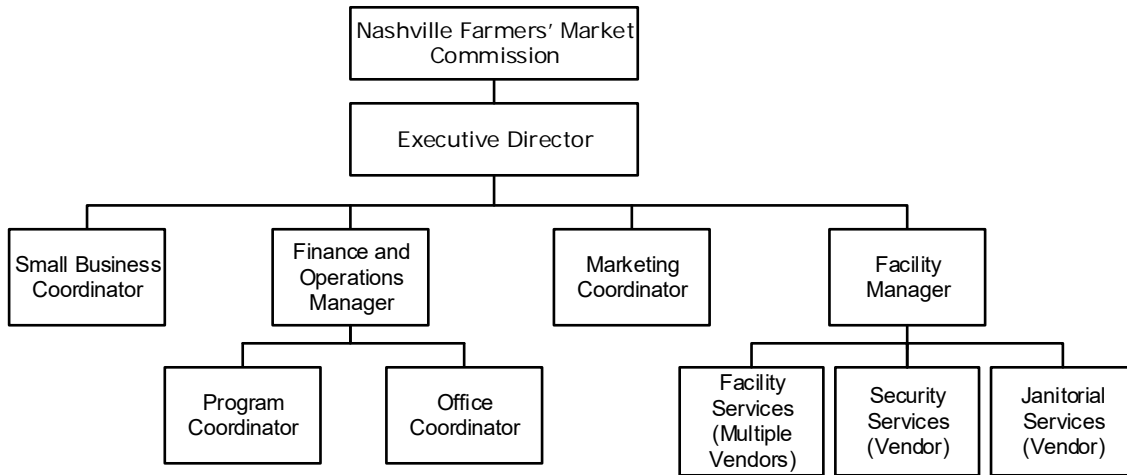


60 Farmers' Market - At a Glance

Mission	The Farmers Market provides retail space to farmers, artisans, non profits and small businesses.			
Budget Summary		<u>2018-19</u>	<u>2019-20</u>	<u>2020-21</u>
	Expenditures and Transfers:			
	Special Purpose Fund	\$ 1,952,700	\$ 2,052,300	\$ 2,052,300
	Total Expenditures and Transfers	<u>\$ 1,952,700</u>	<u>\$ 2,052,300</u>	<u>\$ 2,052,300</u>
	Revenues and Transfers:			
	Program Revenue			
	Charges, Commissions, and Fees	\$ 1,310,500	\$ 1,462,500	\$ 1,665,000
	Other Governments and Agencies	1,000	1,000	0
	Other Program Revenue	15,000	45,000	35,000
	Total Program Revenue	<u>\$ 1,326,500</u>	<u>\$ 1,508,500</u>	<u>\$ 1,700,000</u>
	Non-program Revenue	\$ 0	\$ 0	\$ 0
	Transfers From Other Funds and Units	0	543,800	352,300
	Total Revenues and Transfers	<u>\$ 1,326,500</u>	<u>\$ 2,052,300</u>	<u>\$ 2,052,300</u>
	Expenditures Per Capita	\$ 2.82	\$ 2.96	\$ 2.96
Positions	Total Budgeted Positions	8	8	8
Contacts	Executive Director: Tasha Kennard	email: tasha.kennard@nashville.gov		
	900 Rosa L. Parks Blvd. 37208	Phone: 615-880-2001		

60 Farmers' Market - At a Glance

Organizational Structure



Programs

Administrative

Non-allocated Financial Transactions

Facility Management

Facility Management

Marketing Service

Marketing Service

60 Farmers' Market - At a Glance

Budget Changes and Impact Highlights

Recommendation			Impact
Administrative Operations			
Various Expenses	SPF**	\$(22,400)	Expense adjustment based on anticipated Revenue with no impact on performance
Non-allocated Financial Transactions			
Insurance Billings	SPF	600	No impact on performance. Represents direct charges to department for insurance costs
Internal Service Charges*	SPF	16,100	Delivery of centrally provided services including information systems, fleet management, radio, and surplus property
LOCAP Adjustment	SPF	6,900	No impact on performance
Longevity	SPF	(1,200)	Elimination of longevity pay, with minimal impact on performance
Special Purpose Funds Total		\$0	
TOTAL		\$0	

*See Internal Service Charges section for details

**SPF – Special Purpose Funds