

Sexually Transmitted Diseases Monthly Report for Nashville/Davidson County



Metro Public Health Dept
Nashville/Davidson County

STD/HIV Intervention and Prevention Program of Metro Public Health Department

Summary of Reported Cases June 2012

Note: Data are provisional as of September 17, 2012. Percentages are rounded to the nearest whole number.

There were 459 cases of chlamydia, gonorrhea and syphilis* reported; a 12.8% increase from May 2012.

65% of chlamydia cases and

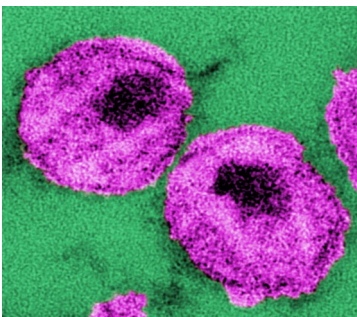
47% of gonorrhea cases were among persons ages 15-24 years. The median age of reported syphilis* cases was 34 years.

75% of chlamydia and primary and secondary syphilis cases were diagnosed by Private MD/HMO; 28% of gonorrhea cases were diagnosed in STD clinics.

For the Year to Date (June 2012), 4% of persons reported with an STD were co-infected with HIV. 73% were diagnosed with HIV/AIDS at least 1 year prior to current STD exposure, and 10% were concurrently diagnosed.

MPHD STD/HIV Program Data : June 2012

Picture: Thin-section Transmission Electron Microscopy of HIV viruses. From CDC/ A. Harrison; Dr. P. Feorino



1,644 patients made 1,827 visits, receiving an average of 3.7 (median of 2.0) services per visit in the STD Clinic. There were 6,683 procedures for these clients. We diagnosed 77 chlamydia cases, 29 gonorrhea cases, and 11 syphilis* cases (6 primary & secondary, 1 early latent, 4 latent & late latent).

91 patients received services through STD Outreach. There were 399 procedures for these clients. We diagnosed 2 chlamydia, 1 gonorrhea, and 0 syphilis cases.

823 people received 1,646 services at the jail.

We conducted 624 RPRs (syphilis tests), 1,256 HIV tests, and 650 GenProbes (tests for chlamydia and gonorrhea).

* Not including congenital and neurosyphilis cases.

MPHD HIV Testing Summary

Inside this issue:

Monthly STD Morbidity, June 2012 **1**

Syphilis cases by year, 1998-2010 **2**

STD data for 1998-2010 **3**

	Number Tested	Number Newly Reported Positives		Number Tested	Number Newly Reported Positives
TOTAL	1,256	12	Hispanic	85	0
Male	877	11	NH Black	644	8
Female	379	1	NH White	506	4
Transgender	0	0	Other	0	0
Native American	0	0	Unknown	15	0
NH Asian/Pacific Islander	15	0	Local sero-positive rate	1.0%	

Reported STD Morbidity, 2012 Davidson County, TN June1-June 30

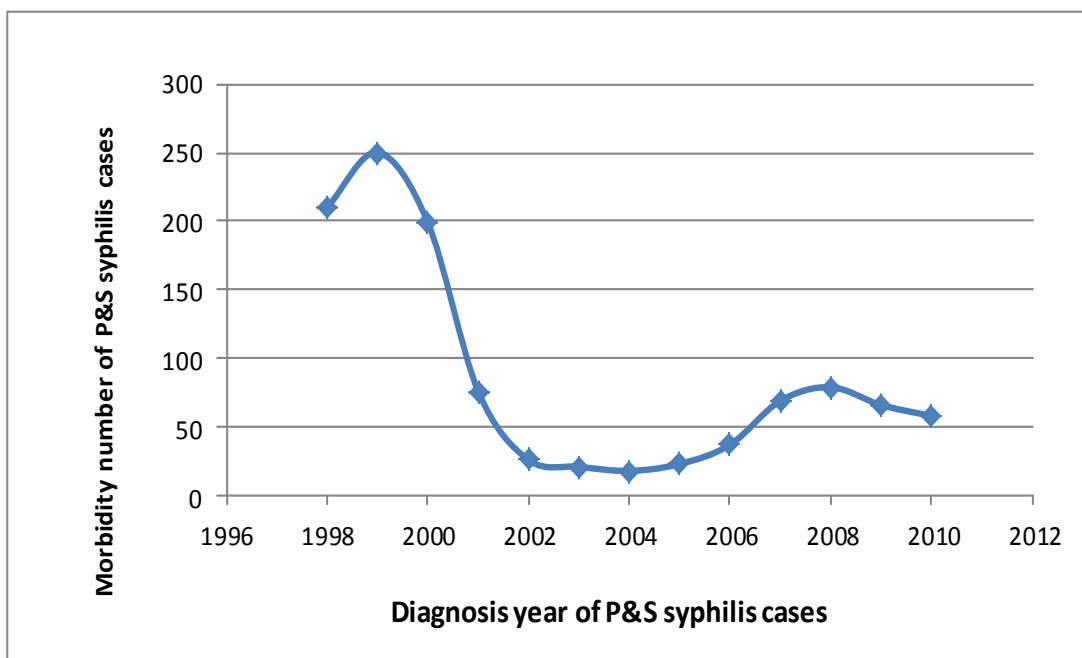
Disease	June 2012	June 2011	Percent change	Year to Date 2012	Year to Date 2011	Percent change
Chlamydia	330	313	5.4%	1838	2,000	-18.1%
Gonorrhea	104	115	-9.6%	634	593	6.9%
Syphilis, Total	25	10	150.0%	120	87	37.9%
Early Syphilis	10	6	66.7%	61	50	22.0%
Syphilis, P&S	6	3	100.0%	41	32	28.1%
Syphilis, Early Latent	4	3	33.3%	20	18	11.1%
Latent & LL ¹	15	3	400.0%	57	36	58.3%
Congenital & Neurosyphilis ²	0	1	-100.0%	2	1	100.0%
Total Reported	459	438	4.8%	2,592	2,680	-3.3%

Note: Data are subject to change due to updates and upon validation by the Tennessee Department of Health.

Source: PRISM (Patient Reporting Investigation Surveillance Manager) as of September 17, 2012.

1. Including Latent syphilis (of unknown duration), Late Latent syphilis, and late syphilis with symptomatic manifestations.
2. Including congenital syphilis and neurosyphilis.

Yearly Case Count of Primary & Secondary Syphilis Cases, Davidson County, TN:1998-2010



Reported Sexually Transmitted Diseases, Davidson County, TN 1998-2010

Year	Chlamydia		Gonorrhea		Syphilis									
	No.	Rate	No.	Rate	All Stages		P&S		Early Latent		Congenital		Latent & Late Latent	
					No.	Rate	No.	Rate	No.	Rate	No.	Rate	No.	Rate
1998	1,981	349.9	1,777	313.9	416	73.5	210	28.3	148	26.1	0	0	58	10.2
1999	2,202	388.2	1,785	314.7	506	89.2	250	28.9	202	35.6	0	0	54	9.5
2000	2,403	421.7	2,404	421.8	522	91.6	200	35.1	173	30.4	4	145	25.4
2001	2,086	365.2	1,625	284.5	380	66.5	76	13.3	137	24.0	5	162	28.4
2002	2,157	379.1	1,409	247.6	294	51.7	26	4.6	109	19.2	5	154	27.1
2003	2,653	466.2	1,492	262.2	195	34.3	21	3.7	25	4.4	0	0	149	26.2
2004	2,664	466.4	1,221	213.8	164	28.7	15	2.6	22	3.9	3	...	124	21.7
2005	2,819	490.8	1,116	194.3	144	25.1	24	4.2	21	3.7	0	0	99	17.2
2006	2,978	514.6	1,311	226.5	166	28.7	34	5.9	36	6.2	0	0	96	16.6
2007	3,038	521.5	1,290	221.5	206	35.4	71	12.2	41	7.0	0	0	94	16.1
2008	3,526	561.3	1,124	178.9	240	38.2	79	12.6	46	7.3	0	0	115	18.5
2009	3,569	561.4	847	133.2	246	38.6	66	10.4	58	9.1	1	0.2	121	19.0
2010	3,471	559.3	960	154.7	198	31.9	58	9.3	53	8.5	0	0	87	14.0

Data Source: 1998-2005 case counts from NETSS (National Electronic Telecommunications System for Surveillance), Tennessee Department of Health, HIV/AIDS/STD Surveillance and Data Management; 2006-2010 case counts from PRISM (Patient Reporting Investigation Surveillance Manager), Metro Public Health Department.

Rates per 100,000 population.

*Metro Nashville Public Health
Department*

311 23rd Avenue North
Nashville, TN 37203

We're on the web!

[http://health.nashville.gov/
HealthData](http://health.nashville.gov/HealthData)

The STD/HIV clinic at Metro Public Health
Department is located at:

Room 116
Lentz Public Health Center
311 23rd Avenue North
Nashville, TN 37203
(615) 340-5647

Clinic Hours

Monday-Friday

8:00 AM – 4:30 PM, patient cut-off: 3:30 PM,

Walk-in service is provided.

The cost for:

STD examination and treatment is \$10;

HIV and syphilis tests are free;

All services for Youth aged 13-17 years are free.

All services are confidential.

Do You Know – STDs, HIV/AIDS, and TB are interconnected?

Having an STD does not necessarily mean that the infected person also has HIV infection. However, continuing the risky behavior that led to STD infection may increase the likelihood of eventually becoming infected with HIV.

HIV weakens the immune system; TB thrives in a weakened immune system. Thus, each disease speeds the other's progress. TB is a leading cause of death among people who are HIV-positive.

(Centers for Disease Control and Prevention)
